

“

The ADI Smart House
Housing for the World !

ADI Smart House
by; Asian Dragon International Corp



“Because Every Person needs a Roof over their heads”

ADI SMART HOUSE



ADI SMART HOUSE



ADI SMART HOUSE



ADI SMART HOUSE



ADI SMART HOUSE



ADI SMART HOUSE



ADI SMART HOUSE



ADI SMART HOUSE

Ideal for Africa,
south America, South-
East Asia, Middle East....



ADI Smart House Specifications

LT Model 2013

Smart House Range

By Asian Dragon International



ADI SMART HOUSE

LT Model

General

There are many different design ideas for prefab houses but most of them do not necessarily meet the customer's requirements and needs.

We, at Asian Dragon International Corp have made it our mission to develop and manufacture through OEM the prefab house of the future by taking our many customers various requirements and needs into consideration:

In close co-operation with our selected prefab house manufacturer we developed:

- Ø **Cost effective and affordable**
- Ø **Spacious and easy to assemble**
- Ø **Multifunctional usage**
- Ø **Green (Environmental Friendly)**
- Ø **Easy to transport and cost saving in logistic**
- Ø **Mobile with long service life time**

We are proud to present our newly designed prefab house called "ADI Smart"range which fulfills all above mentioned criteria's.

ADI Smart House LT Model

Our Newest “ADI Smart” houses provide a real home to affordable prices and is a total built in solution. It is “Not only foldable but flexible” and can be used for multi purposes.

- ∅ It requires no foundation and is easy and very quick to assemble (30min) by unskilled labors. (2-3).
- ∅ As a total built in solution all Doors, Windows, electrics etc. are already included.
- ∅ Elaborate packing allows to load 5x30m² Lotus house into one 40'HQ container which is a cost saving point for our customers.
- ∅ In our vision we think green, and therefore carefully choose the materials built in our houses and make sure that they are recyclable, environment friendly and do not contain any chemical harming materials.

ADI Smart House is a modular, multipurpose housing solution that will serve your needs and requirements in the best possible manner.

ADI Smart House LT Model





ADI Smart House LT Specifications

Dimensions and Weight

- External Dimension (L*W*H):
5800*5180*2620(2510)
Length can reach up to 11,900
- Internal Dimension(L*W*H):
5500*5080*2475(2400)
- Weight:2500kg per unit

Steel Framework

- Material: Main frames are made from channel steel and RHS cube. All the frames are well welded in the factory.
- Surface working: All frames are painted and treated with Anti-rust paint.



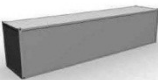
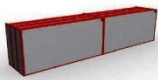

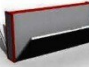












ADI Smart House LTD Model





Specifications ADI Smart House LT Model

 Houses arrive in 40' HQ container	Floor Composition: v Floor Composition:
 Unload the houses from the container	v External wainscot: 0.3mm steel sheet.
 Start to erect the house	v Insulation filling: EPS in a thickness of 30mm among steel transverse supports
 Unfold the floor	v Steam blockade: PE foil in a thickness of 80µm
 Fix the floor	v Waterproof ply wood panel in a thickness of 15mm for dry area v PVC floor covering in a thickness of 1.5mm. v Permitted loading: 3.50 KN/m ²
 Swing up the roof	v Coefficient of thermal conductivity: $K=0,032 \text{ W/mk}$
 Swing up the roof	 Lock off the Roof
 Swing down the front and back walls	 Fix the front and back walls
 Swing up the remaining side walls	 Lock off the side walls
 A new home is ready	 A new home is ready

ADI Smart House LT Model

Façade Wall

Wall panels are made of 50mm with 10kg density EPS foam sandwich panel. All panels are fixed in factory and hinged with roofing panel. The thickness of steel for panel is 0.35mm outside and 0.35mm for inside.

Permitted loading: 0.60 KN/m²

Coefficient of thermal conductivity: $K=0,028 \text{ W/m.K}$

Door(1)

External door: steel, single fold, filled door with opening dimensions of 850X2000mm, furnished with a cylinder lock with 3 keys. Doorframe is made of galvanized steel, with overall dimensions of 900X2025mm, 50mm thick, made of painted sheet metal as the framework



Specifications LT ADI Smart House



Windows

- ∅ Windows are made of: PVC, white color, with dimensions 900X1100mm, single glass in a thickness of 4mm, sliding style.

Electricals Installation

- ∅ Standard: according to VDE 100 regulations or CCC standard, UL standard.
- ∅ Voltage: 220/380 V, 50 Hz Network connections: CEE-connection plus/socket, 3-pole 32 A, 220V[~], mounted on the top frame in upper corners of shorter side wall
- ∅ Inner distribution system: NyM-J cables of suitable dimensions, flush-mounted Protection: protective current switch (40/4E-0,03A), automatic fuses (B-characteristics) of suitable power (10A, 16A)



- ∅ Earthing: galvanized connector with a steel plate of dimensions 30x80mm welded



ADI Smart House Specifications LT Model

Fittings:

- Ø Electric distribution box – 1x40/4E-0,03A (protective current switch), 1x10A & 2x16A (automatic fuses)
- Ø Single fluorescent lights 1x40W – 4 each
- Ø Flush-mounted sockets 220 V – 6each
- Ø Flush-mounted switches 220 V – 2each



Warranty

- Ø Complete –lotus house, equipment and installations have 1 (one) year warranty; paint have 1 (one) year warranty.

Remark: Rights to technical changes are withheld.



ADI Smart House



ADI Smart House





ADI SMART HOUSE PRICE LIST

Valid till 30, July.2014

Presented by Asian Dragon International (ADI)

Each 40hq can load 5 units LT model, or 10 units LTH

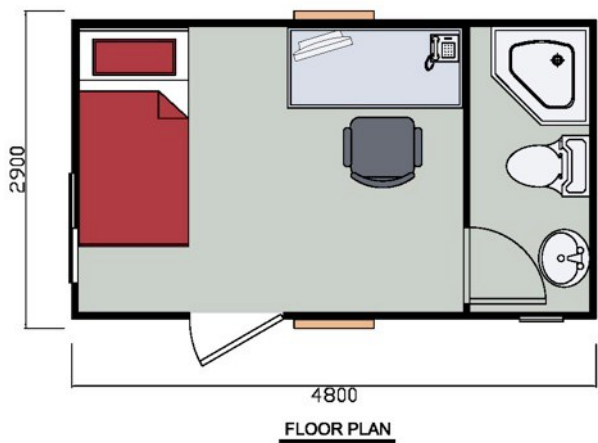
Delivery time: 35 days for 200 units/month;

The dimension for all TH models are all same, it's 2900mmx 5050m;
The Dimension for LT models are allsame" It is 5050 mm x 5900 mm

The dimension of other models are listed below of each floor plan

All have C.E certification

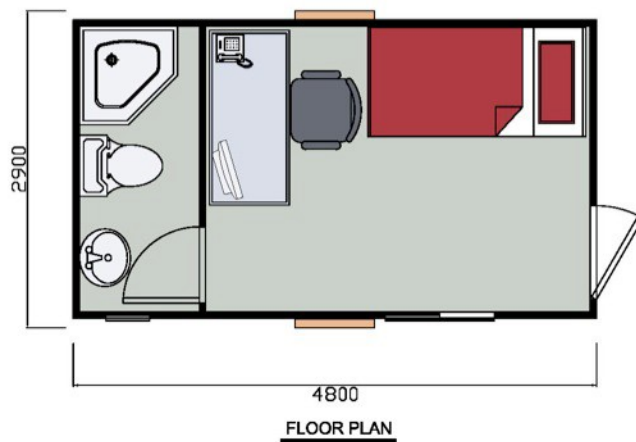
LTH-01



LTH-01

NO.	ITEM	QUANTITY
1	DOOR	2
2	WINDOW	2
3	SOCKET	4
4	SWITCH	1
5	LIGHT	2
6	TOILET	1
7	WASHBASIN	1
8	SHOWER	1
9	PARTITION WALL	2.7m
PRICE: 4,750USD		

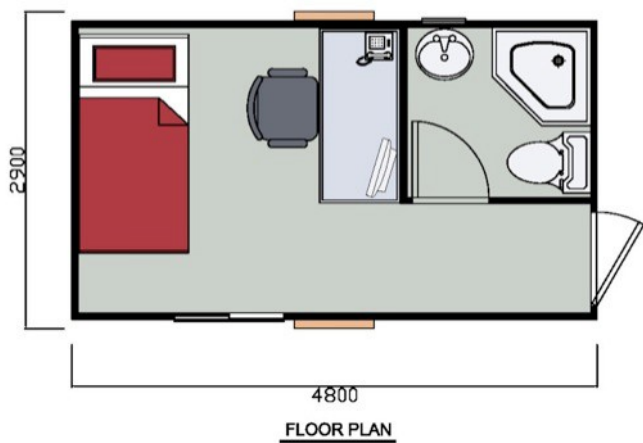
LTH-02



LTH-02

NO.	ITEM	QUANTITY
1	DOOR	2
2	WINDOW	2
3	SOCKET	4
4	SWITCH	1
5	LIGHT	2
6	TOILET	1
7	WASHBASIN	1
8	SHOWER	1
9	PARTITION WALL	2.7m
PRICE: 4,750USD		

LTH03



LTH-03

NO.	ITEM	QUANTITY
1	DOOR	2
2	WINDOW	2
3	SOCKET	4
4	SWITCH	2
5	LIGHT	2
6	TOILET	1
7	WASHBASIN	1
8	SHOWER	1
9	PARTITION WALL	2.7m
PRICE: 4,490USD		

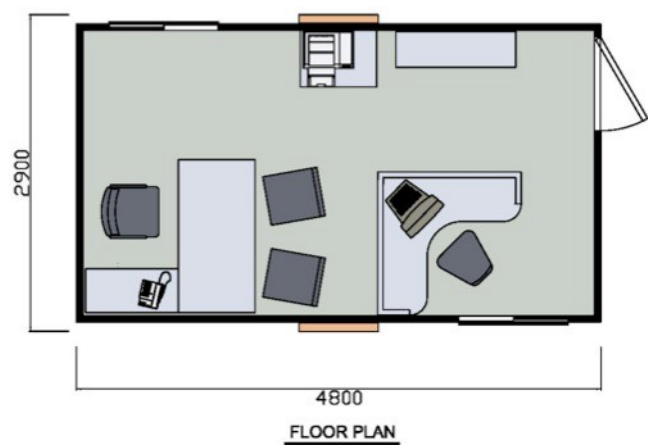
LTH04



LTH-04

NO.	ITEM	QUANTITY
1	DOOR	1
2	WINDOW	1
3	SOCKET	4
4	SWITCH	2
5	LIGHT	2
6	TOILET	/
7	WASHBASIN	/
8	SHOWER	/
9	PARTITION WALL	/
PRICE: 3,900USD		

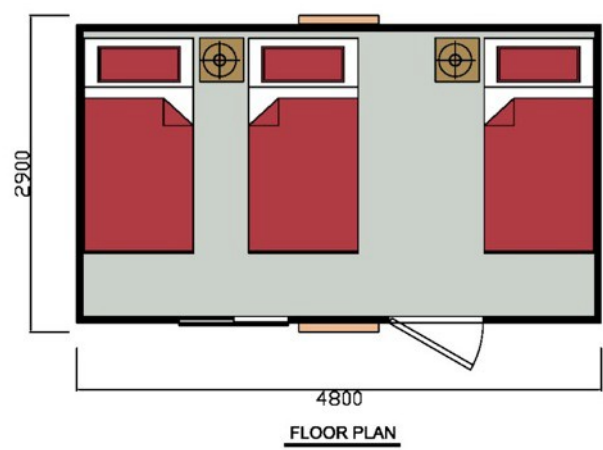
LTH05



LTH-05

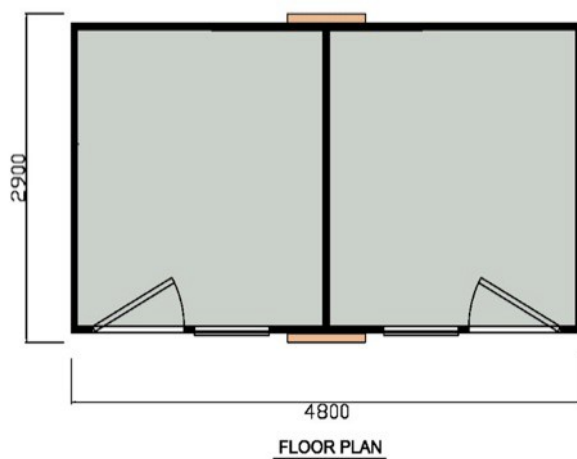
NO.	ITEM	QUANTITY
1	DOOR	1
2	WINDOW	2
3	SOCKET	4
4	SWITCH	2
5	LIGHT	2
6	TOILET	/
7	WASHBASIN	/
8	SHOWER	/
9	PARTITION WALL	/
PRICE: 4,000USD		

LTH06



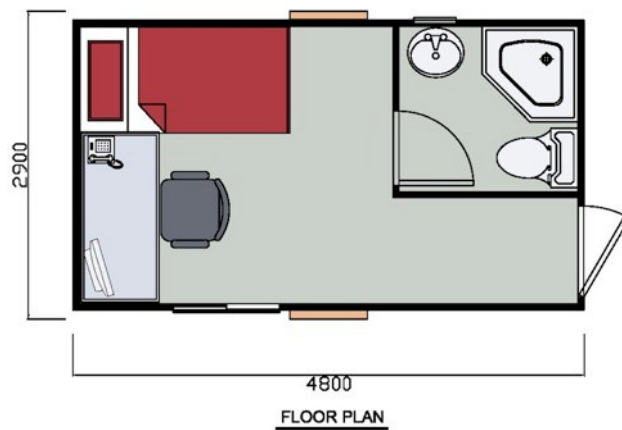
LTH-06

NO.	ITEM	QUANTITY
1	DOOR	1
2	WINDOW	1
3	SOCKET	4
4	SWITCH	2
5	LIGHT	2
6	TOILET	/
7	WASHBASIN	/
8	SHOWER	/
9	PARTITION WALL	/
PRICE: 3,900USD		



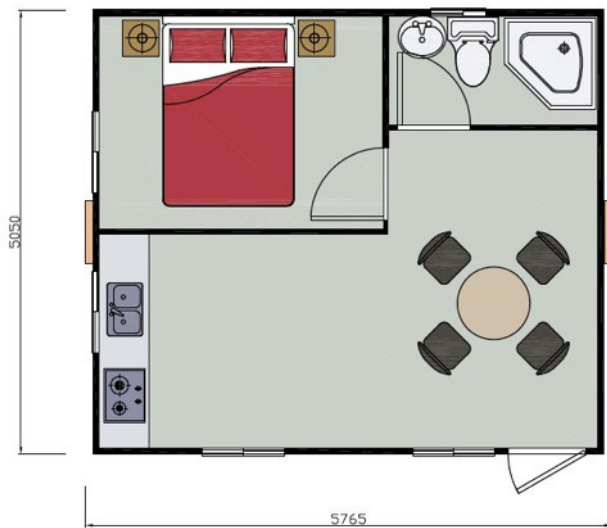
LTH-07

NO.	ITEM	QUANTITY
1	DOOR	2
2	WINDOW	2
3	SOCKET	4
4	SWITCH	2
5	LIGHT	2
6	TOILET	/
7	WASHBASIN	/
8	SHOWER	/
9	PARTITION WALL	/
PRICE: 4,320USD		



LTH-08

NO.	ITEM	QUANTITY
1	DOOR	2
2	WINDOW	2
3	SOCKET	4
4	SWITCH	2
5	LIGHT	2
6	TOILET	/
7	WASHBASIN	/
8	SHOWER	/
9	PARTITION WALL	/
PRICE: 4,490USD		

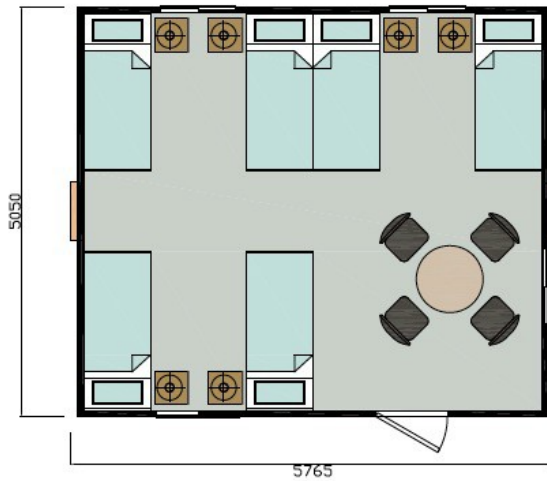


FLOOR PLAN



LT-01

NO.	ITEM	QUANTITY
1	DOOR	3
2	WINDOW	5
3	SOCKET	6
4	SWITCH	4
5	LIGHT	4
6	TOILET	1
7	WASHBASIN	1
8	SHOWER	1
9	PARTITION WALL	8.1m
PRICE: 7,800USD		

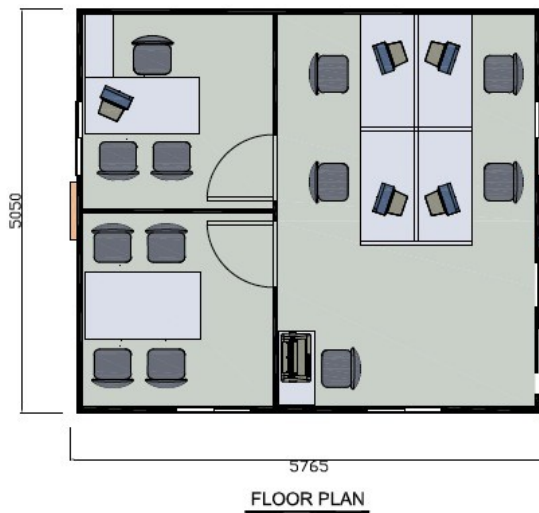


FLOOR PLAN



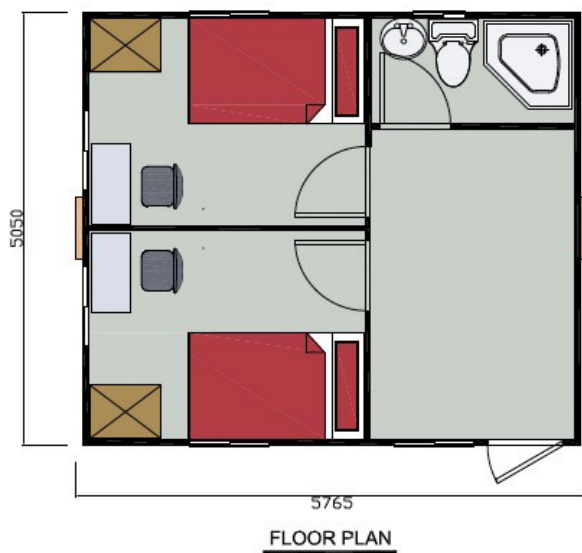
LT-02

NO.	ITEM	QUANTITY
1	DOOR	1
2	WINDOW	4
3	SOCKET	4
4	SWITCH	2
5	LIGHT	3
6	TOILET	/
7	WASHBASIN	/
8	SHOWER	/
9	PARTITION WALL	/
10	URIINAL	/
PRICE: 6,700USD		



LT-03

NO.	ITEM	QUANTITY
1	DOOR	3
2	WINDOW	4
3	SOCKET	4
4	SWITCH	2
5	LIGHT	3
6	TOILET	/
7	WASHBASIN	/
8	SHOWER	/
9	PARTITION WALL	7.5M
PRICE: 7,100USD		



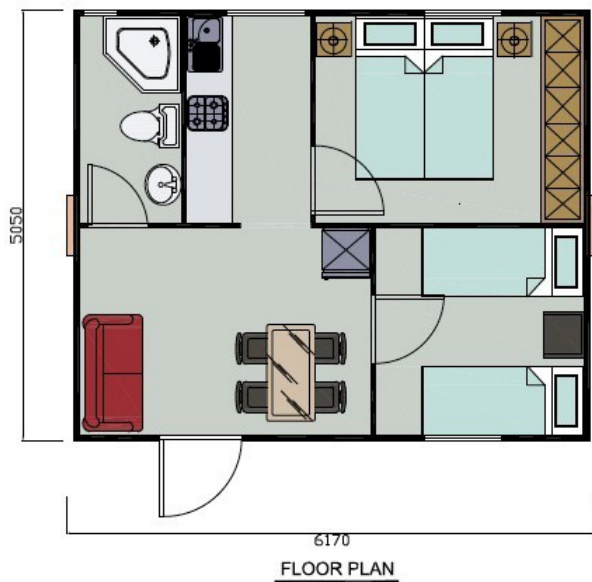
LT-04

NO.	ITEM	QUANTITY
1	DOOR	4
2	WINDOW	6
3	SOCKET	6
4	SWITCH	4
5	LIGHT	4
6	TOILET	1
7	WASHBASIN	1
8	SHOWER	1
9	PARTITION WALL	11m
PRICE: 7,400USD		



LT-05

NO.	ITEM	QUANTITY
1	DOOR	3
2	WINDOW	5
3	SOCKET	5
4	SWITCH	3
5	LIGHT	4
6	TOILET	1
7	WASHBASIN	1
8	SHOWER	1
9	PARTITION WALL	8M
PRICE: 7,350USD		



LT30

Dimension: 5050mm x 6000mm

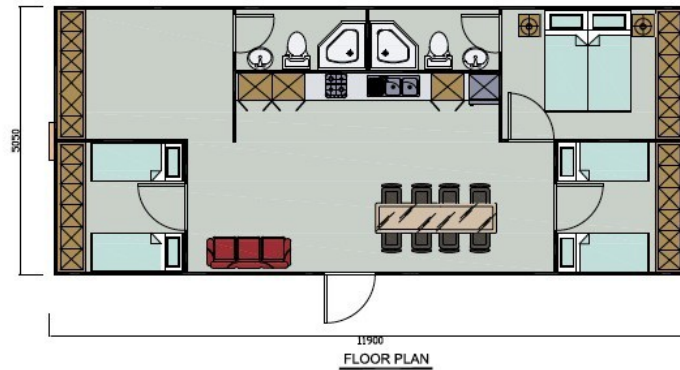
ITEM	Q.T.Y
Structure	30
Door	
Interior	3
External	1
Window	4
Kitchen (3
Bath	
Toilet	1
Shower	1
Washbasin	1
Furniture	
Bed(single)	4
Bed(double)	0
Dining-table	1
Sofa	1
Wardrobe	1
TOTAL(USD)	9,120



Dimension: 5050mm x 7930mm

ITEM	Q.T.Y	
Structure	40	
Door		
	Interior	3
	External	1
Window	4	
Kitchen	3	
Bath		
	Toilet	1
	Shower	1
	Washbasin	1
Furniture		
	Bed(single)	2
	Bed(double)	1
	Dining-table	1
	Sofa	1
	Wardrobe	2
TOTAL(USD)	11,624	

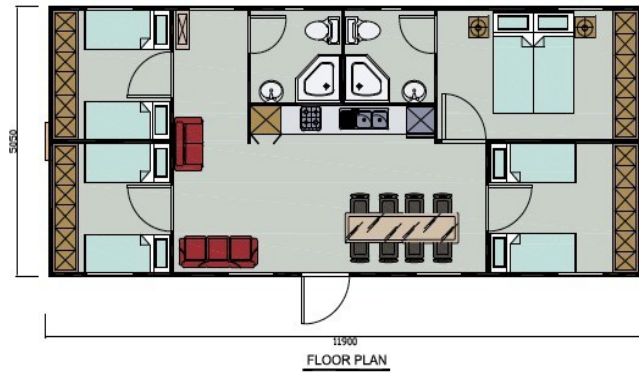
LOUTS50



**Dimension: 5050mm x
11730mm**

ITEM	Q.T.Y
Structure	59
Door	
Interior	5
External	1
Window	7
Kitchen	4
Bath	
Toilet	2
Shower	2
Washbasin	2
Furniture	
Bed(single)	6
Bed(double)	0
Dining-table	1
Sofa	1
Wardrobe	3
TOTAL(USD)	16,374

LOUTS70A

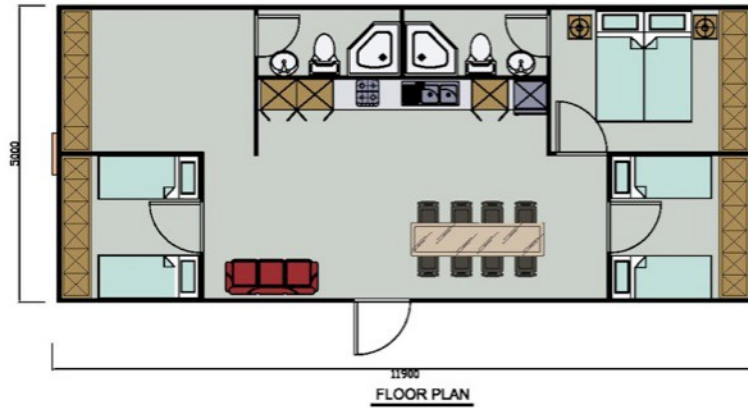


LT70A

Dimension: 5050mm x 11730mm

ITEM	Q.T.Y
Structure	59
Door	
Interior	6
External	1
Window (USD/sqmiopuy[)	9
Kitchen	4
Bath	
Toilet	2
Shower	2
Washbasin	2
Furniture	
Bed(single)	8
Bed(double)	0
Dining-table	1
Sofa	1
Wardrobe	4
TOTAL(USD)	17,654

LOUTS70B

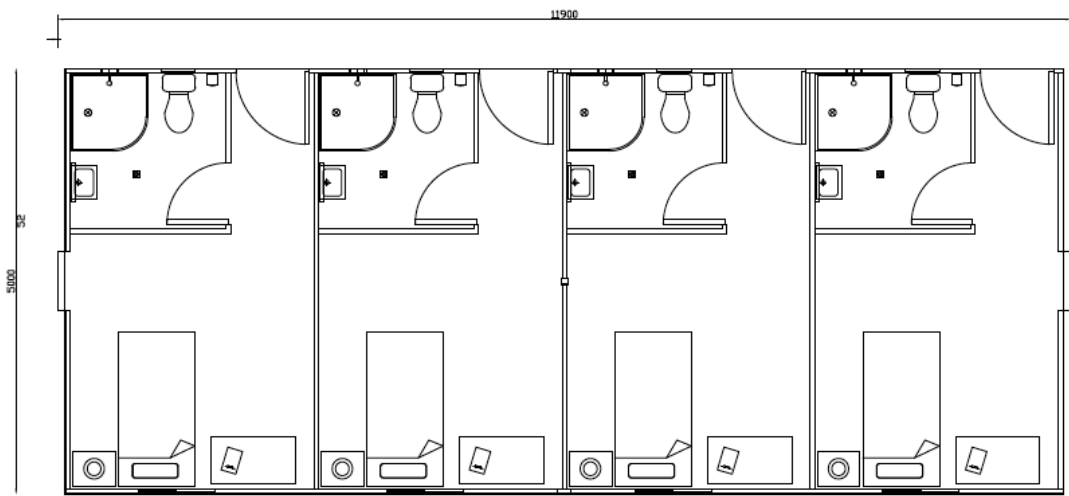


LOUTS70B

Dimension: 5050mm x 11730mm

ITEM	Q.T.Y
Structure	59
Door	
Interior	5
External	1
Window	9
Kitchen	4
Bath	
Toilet	2
Shower	2
Washbasin	2
Furniture	
Bed(single)	6
Bed(double)	0
Dining-table	1
Sofa	1
Wardrobe	4
TOTAL (USD)	16634

LT-4RM suite



Dimension 11.9m x 5m

NO.	ITEM	QUANTITY
1	DOOR	8
2	WINDOW	8
3	SOCKET	12
4	SWITCH	8
5	LIGHT	8
6	TOILET	4
7	WASHBASIN	4
8	SHOWER	4
9	PARTITION WALL	16M

PRICE: 12,600 USD

