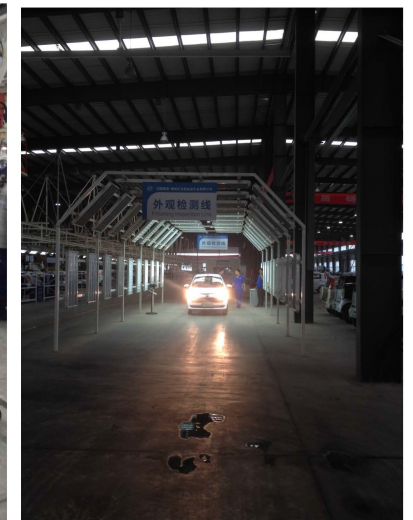
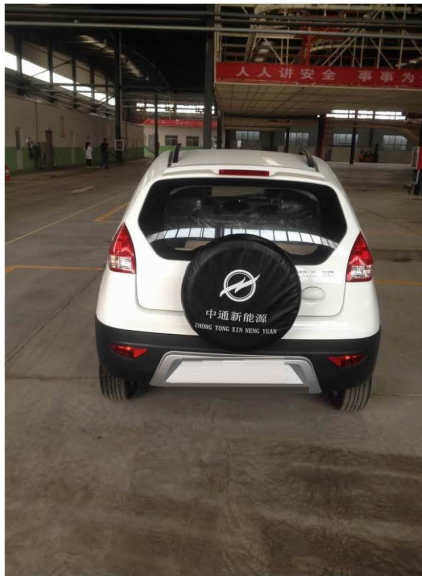
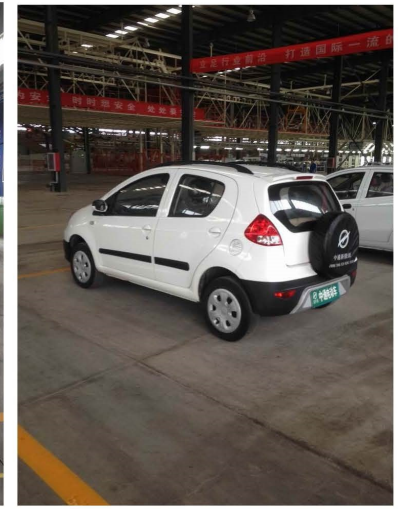




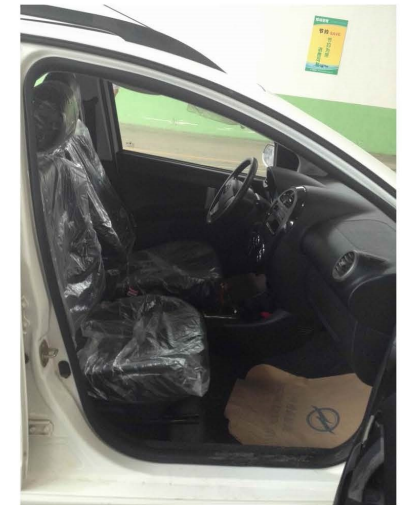
electric passenger car introduction and quotation



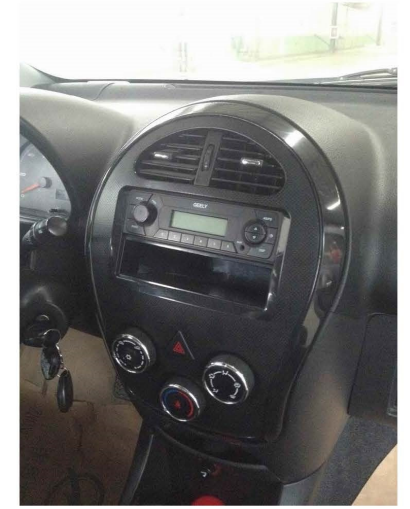
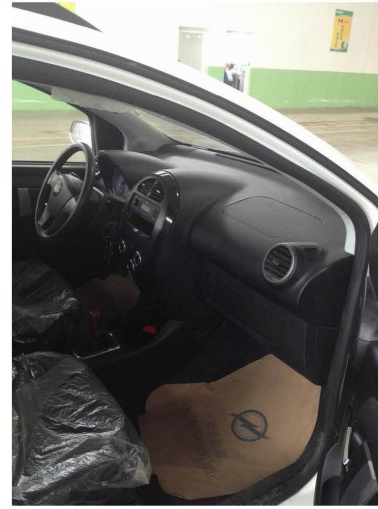
Safe and reliable: the design safety first concept is from the GTSM, designed according to the five-star safety standard. Front, rear and side wall adopt completely closed cage structure design, can absorb the impact force from different direction.



Attractive appearance: with the appearance of the fashion sport, and high cross-country trafficability characteristic. Unique tomahawk front face, rear knapsack spare tire design and the sport luggage rack, cut a figure of strong, sports and handsome strength.



Exquisite interior decoration: dynamic and sporty decoration reveal the nature of the luxury, eleven storage spaces, hi-fi stereo, bring you the comfort and convenience of control.



Luxury configuration: rich high-end humanized configuration, equipped with EPS electric steering system, electronic vacuum booster brake system, four electric elevator windows, electric rearview mirror, central lock, remote control keys, intimate and safe.



electric passenger car configuration table

		E-Cruiser-Luxury	E-Cruiser- Aristocratic	Optional price in USD
Basic parameters	L*W*H(mm)	3815*1648*1530	3815*1648*1530	
	Wheel base(mm)	2340	2340	
	Tread(front/back) (mm)	1420/1410	1420/1410	
	Curb weight (kg)	1130	1230	
	Battery type	lead-acid maintenance-free battery	lithium iron phosphate maintenance-free battery	
	Battery capacity	8V 150Ah*9	96V230Ah	
	Motor rated power	7.5kW(brushless ac asynchronous)	96V15kw	
	Top speed (km/h)	70	100	
	Economic speed(km/h)	50	70	
	Comprehensive conditions driven mileage when Economic speed (Kms)	90-120	180-210	
	Maximum gradeability (%)	20	20	
	Body structure	all metal monocoque body overall structure	all metal monocoque body overall structure	
	Suspension system(front/back)	front: McPherson independent suspension (with ausiliary frame) back: torsion beam, the coil spring type independent suspension	front: McPherson independent suspension (with ausiliary frame) back: torsion beam, the coil spring type independent suspension	
	Braking system	front ventilated disc/rear drum+double line+vacuum booster	front ventilated disc/rear drum+double line+vacuum booster	
	Variable speed system	electronic shift CVT	electronic shift CVT	
Steering system	electronic power steering	electronic power steering		
Tire specification	175/65 R14	175/65 R14		

External equipment	External mounted full size spare tire	●	●	
	The roof rack	●	●	
	Front combination of crystalline light	●	●	
	Side turn signal	●	●	
	Folding rearview mirror same color with car body	●	●	
	Four door rubbing strip	●	●	
	Electric adjustment Rearview mirror	●	●	
	Steel wheel	●	●	
	Aluminium alloy wheel	○	○	93.5
Internal equipment	Black instrument desk	●	●	
	Injection molding interior trim panels	●	●	
	Double color four sports steering wheel	●	●	
	Multi-functional combination instrument	●	●	
	Warm wind system	●	●	
	Air conditioning system	○	○	466.00
	Four door electric windows	●	●	
	Central control door lock with remote control key	●	●	
	Angle adjustable steering column	●	●	
Remote control device open the back door	●	●		
Manual radio with AUX	●	●		

	Double color fabric sports seats	●	●	
Safety equipment	Front seat three-point safety belt	●	●	
	Warning device without wearing a seatbelt	●	●	
	Alarm device without shutting the door	●	●	
	Steering lock anti-theft device	●	●	
	Overspeed alarm device	●	●	
	Rear door child safety locks	●	●	
	Four side door anticollision beam profile	●	●	
	Rear spoiler (with high brake lights)	●	●	
	Rear View Camera System	○	○	40.50
	Anti-dazzling rearview mirror	●	●	
	SRS	-	○	452.00
ABS	-	○	150.00	
Steering wheel	RHD	○	○	600.00
Others	Guarantee period	12 months	12 months	
	MOQ (Quantity/40HQ)	4	4	
	FOB Qingdao sea port in China in USD	7125.00	18500.00	

Optional colour: Apple green  Pure white 

Note: ● means equipped, ○ means optional, - means no equipped. Product specification configuration will be subject to real vehicle, our company reserves the power of interpretation.

The publicity pictures and product information is for reference only, no prior notice if there is any change.