

Solar Light Category

Separate solar street light



Integrated solar street light



Solar Garden Light



Solar Lawn Light



Solar Wall Light



Solar Flood Light



LED Light Category

LED Street Light



LED Lawn Light



LED Garden Light



LED Wall Light



LED Flood Light



LED Panel Light

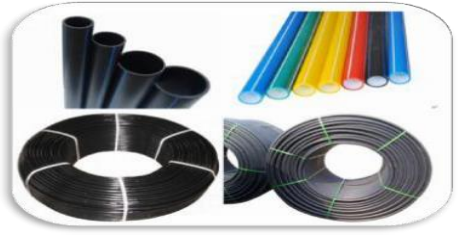


Others

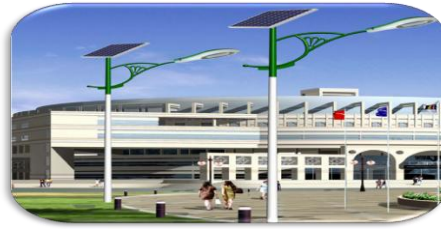
Solar Panel

Solar Charger


HDPE PIPE



Separate Solar Street light



1.Product Descriptions: Solar Street Light :5-13 working hours per day, 3-5 rainy days back-up

LED lamp	Power:20W-180W, Chip:Bridgelux, 45mil led chips; Lifespan:50000hour ; Lumen :100Lm/w ; Efficiency:≥90%;Color temperature:2800K-6500K; Lamp Body:Die-Casting Aluminum Alloy	
Solar Panel	Power:50-200W ,18V,36V; Lifespan:20 years; Category:mono silicon and poly silicon ; Working temperature:-40 to +80°C	
Controller	12V/24V , 10A-50A; IP65; intelligent sensor of :light control and time control overcharge,discharge,short circuit protection	
Battery	Solar Gel lead-acid Battery, 12V and 24V ;Lifespan:5-8 years Working temperature:-30- +60°C	
Lighting pole	Material:Q235 steel grade; hot-dip galvanized and powder coating ; Life Span:≥25 years Height:5m-12m; Thickness:2.5m-4.5m;	

2.Applications: Used for street lighting; park lighting; roadway lighting; fence lighting; pathway lighting; residential road, branch road, rural roads, Square,Industrial roads etc



3.Popular Sizes :

Model	LCL-ST15	LCL-ST30	LCL-ST60W	LCL-80W
-------	----------	----------	-----------	---------

LED lamp	15W	30W	60W	80W
Solar Panel	18V 50W	18V 90W	18V 180W	18V 260W
Gel battery	12V 50AH	12V 90AH	12V 180AH	12V 260AH
Controller	12V 10A-30A			
Pole Height	5-6 m	6-8m	8-10m	8-10m

All our products are customized, please inform us the configuration and the design you need , thanks !

All in one integrated solar street light



1. Product Description

Commodity	All in one integrated solar street light
Light	LED LED chip:High brightnes Bridgelux,IP65;Lumen:1200-6600 lm ; Lifespan:50000 hours;Irritation angle:120°;Lamp body: Aluminum Alloy; Working temperature: -30 to +70°C,temperature:6000k.Lum:130lm/w
Solar Panel	Power:18V ;Lifespan:25years;High efficiency monocrystalline silicon
Battery	lithium battery 12.8V, A grade Lifespan:5-8 years

2.Applications: Suitable for streets, , square, park, school, villas, gardens and other places of road lighting.



3. Technical Data

Model	LCL-5W	LCL-10W	LCL-12W	LCL-15W
LED Lamp with PIR	12V 5W 50000hours	12V 10W 50000hours	12V 12W 50000hours	12V 15W 50000hours
Mono Solar Panel Power	18V10W 25years	18V15W 25years	18V20W 25years	18V30W 25years
Lithium Iron Phosphate Battery	12V 6AH 5years	12V 8AH 5years	12V 10AH 5years	12V 12AH 5years
Installation Height	2.5-3.5m	3-4m	3-4m	4-5m
Installation Distance	7-9m	8-10m	8-10m	10-15m

Model	LCL-20W	LCL-25W	LCL-30W	LCL-40W
LED Lamp with PIR	12V 20W 50000hours	12V 25W 50000hours	12V 30W 50000hours	12V 40W 50000hours
Mono Solar Panel Power	18V 40W 25years	18V 50W 25years	18V 55W 25years	18V 60W 25years
Lithium Iron Phosphate Battery	12V 18AH 5years	12V 21AH 5years	12V 24AH 5years	12V 30AH 5years
Installation Height	5-6m	6-7m	7-8m	7-8m
Installation Distance	18-20m	18-20m	18-20m	18-20m

Model	LCL-50W	LCL-60W	LCL-70W	LCL-80W
LED Lamp with PIR	12V 50W 50000hours	12V 60W 50000hours	12V 70W 50000hours	12V 80W 50000hours
Mono Solar Panel Power	18V 70W 25years	18V 80W 25years	18V 90W 25years	18V 100W 25years
Lithium Iron Phosphate Battery	12V 36AH 5years	12V 42AH 5years	12V 48AH 5years	12V 52AH 5years
Luminous Flux	120-130 LM/W			
LED Chip Brand	US BRIDEGELUX			
Color Temperature	3000K or 6500K			
Charging time	6 hours			
Discharging time	15hours for full power , 30hours for half power			
Installation Height	7-9m	7-9m	7-9m	7-9m
Installation Distance	18-20m	18-20m	18-20m	18-20m
Lamp Material	Aluminum Alloy			
Warranty	3 years			

Solar Garden Light



1. Specification:

Pole	Material:Q235,mild steel;Height: 3m -5m;Thickness:2.5mm-3mm Finish:Hot-dip Galvanize, powder coating ;Lifespan:25years
LED Lamp	Power:3-30W;LED Chip:Epistar,Bridgelux or Cree ;Working temperature:-60 to +70 centigrade; IP rating:IP65;Working life : >50000hours
Solar Panel	Power : 5-50W ;Mono-crystalline panel or polycrystalline panel ; Power tolerance: $\pm 5\%$;Working temperature :-40°C to 85°C;Working life ≥ 20 years
Battery	Lead battery or lithium battery,5~8years lifespan,3years warranty
Battery box	Waterproof,Anti-corrosion,Pressure resistant,Heat protection,Lifespan:20years
Controller	Intelligent sensor of :Light control,Time control,Power control ,Over charging protection,Discharging protection,Short Circuit protection

2.Features: 1).Adopt high power and super bright LED bulb. Waterproof, duct-proof; 2). Long lifespan, easy to install and maintenance-free; 3).Automatically turn on at night and off by day ,no electricity or wire need ; 4).Powered by solar ,eco-friendly and energy saving ;5). Over-charge and over-discharge protection

3.Applications: Urban streets,parks,squares,gardens,villas,mall,villas,urban street or other outdoor areas



4. Popular Sizes:

Model	LCL-SG6	LCL-SG9	LCL-SG12	LCL-SG15
LED lamp	6W	9W	12W	15W
Mono Solar Panel	18V 10W	18V 25W	18V 30W	18V 40W
Lithium battery	12V 9AH	12V 13.5AH	12V 18AH	12V 22.5AH
Working mode	Light control/ body motion sensor + remote control			
Pole Height	3-5 m			

Solar Lawn Light



1. Specifications: 8-10 hours/day, battery for 3 continuous cloudy or rainy days backup

Solar Panel	Poly/Mono crystalline ,25years lifespan
Battery	Lithium battery, 5~8 years lifespan, 3years warranty
LED Light	Power:0.5w-5w ;Working Temperature: -10°C-60°C;Lens Angles: 120degree;Power factor (PF): >0.9;CRI: Ra > 75; Lifetime:50,000hrs
Pole	hot-dip galvanized and spray coated treatment

2.Features: 1). Long lifespan, easy to install and maintenance-free ;2).Automatically turn on at night and off by day ,no electricity or wire need ;3).Powered by solar ,eco-friendly and energy saving ;

3.Applications: Garden path, lawn, park ,villa, balcony, terrace, residence zone etc



Solar Wall Light



1. Product Description : Solar wall light with solar powered,can automatically get charged in the daytime and light up at night for outdoor landscape decoration and lighting.

2.Specifications:

Solar panel	polycrystalline,5.5V,0.2W-5W
Battery	Li-ion battery,3.7V, 200mAH-3600mAH
LED Light	ultra bright white 12LED; plastic ABS lamp housing
Operation	Light sensor,ON at night,OFF daytime; Work at 100% output for 6hrs,30% output till day break to save energy;Over charge and discharge protection

3.Application: Used for lighting or garden decoration in, parks, buildings along the trial, residential areas etc



Solar Flood Light



1.Product Descriptions:

Solar Panel	poly Aluminum Alloy and Tempered Glass panel
Light	COB LED or mould (Bridgelux, Epistar chip); Lumen:90-110LM/W; Lifespan:50000hours;LED driver contact with the heat sink directly and the heat dissipation is much stronger;Input Voltage:AC85V-265V
Pole	Stainless steel parts: Endurance the corrosion of air, water, chemical acid, alkaline, salt etc, c an be used in various kinds of harsh conditions for long term.

2.Features: 1)Waterproof, heatproof and durable, energy saving; 2).Automatically turn on in dark and turn off in day time or bright light condition, save energy.3).High efficiency, long service life.4).Easy installation.

3.Applications: Widely used in the lighting of project, business area, airport, Garden// Street/ Pathway etc.



LED Street Light



1.Product Description:

Power	10W-300W LED, US Bridgelux,Lumen :100-130lm/w,lifespan: 5000hurs, Working temperature: -40°C—50°C;Beam angle: 120°; DC12V, 24V/AC100-265V 220v/50Hz; Factory: >0.98;CRI: ≥80
Color temperature	WW: 2700-3500K; PW: 4500-5500K; CW: 6000-7000K
Lamp	Lamp in die-cast aluminum, coated with powder polyes ter after anti-corrosive treatment .A lamp body with a built-ray lens
Pole	hot galvanizing treatment coated with powder after

2.Applications: Widely used in the lighting and decoration of Highway, road, street, Park, School, football field, stadium and other Outdoor places

3.Popular LED Street Lamp Designs:

LC-LSL01



LC-LSL02



LC-LSL03



LC-LSL04



LC-LSL05



LC-LSL06



LC-LSL07



LC-LSL08



LC-LSL09



LC-LSL10



LC-LSL11



LC-LSL12



LC-LSL13



LC-LSL14



LC-LSL15



LC-LSL16



LC-LSL17



LC-LSL18



LC-LSL19



LC-LSL20



LC-LSL21



LC-LSL22



LC-LSL23



LC-LSL24



LC-LSL25



LC-LSL21



LC-LSL22



LC-LSL23



LC-LSL24



LC-LSL25



LED Lawn Light



CPD-001



CPD-002



CPD-003



CPD-004



CPD-005



CPD-021



CPD-022



CPD-023



CPD-024



CPD-025



CPD-006



CPD-007



CPD-008



CPD-009



CPD-010



CPD-026



CPD-027



CPD-028



CPD-029



CPD-030



CPD-011



CPD-012



CPD-013



CPD-014



CPD-015



CPD-031



CPD-032



CPD-033



CPD-034



CPD-035



CPD-016



CPD-017



CPD-018



CPD-019



CPD-020



CPD-036



CPD-037



CPD-038



CPD-039



CPD-040

LED Garden Light



1. Product Descriptions:

Working Voltage	AC85-265V,50/60HZ
Power	5w-100w
Power Factory	> 0.9
Luminuous Efficiency	120 lm/w
CRI	Ra > 75
Light source	Epistar/Bridgelux
Driver	Meanwell
Color temperature	3000K-6500K
Light Angle	120degree
Housing material	Aluminum alloy
Pole	stainless steel,hot dip galvazing ,3.5M
Working lifetime	> 50000hours

2. Applications: mainly used for outdoor lighting like garden ,park, yard, pools, andscape, residential areas etc to make beautiful atmosphere.



LED Wall Light



1.Product Descriptions:

Electrical parameter	LED power Input voltage(V) Working Voltage(V) Frequency Power factor	1w-30w AC110-277Vac DC30-36V 50-60 ≥0.9
Light parameter	LED chip Luminous flux(lm) Lamp's Efficiency Color temperature CRI Illuminance Uniformity	Epistar/Bridgelux 100lc/w 0.9 2700-6500K 75 >0.5
Comprehensive parameter	Material Beam Angle Working/storing temperature	Aluminum alloy 120degree -40°C~+65°C
Quality Warranty	Life span Waterproof coefficient	50000hours IP65
		3years quality warranty period.

2.Applications: Exterior or interior LED lighting for Hotels, Garages, Commercial Buildings, Public areas, Schools and Hospitals etc



LED Flood Light



1.Product Descriptions:

Electrical parameter	LED flood light chip LED power Input voltage(V) Frequency Power factor	COB fromBridgelux/Epistar/Sanan 50w LED Flood Light AC85- 265V 50- 60hz 0.9
Light parameter	Luminous flux(lm) Color temperature	4500lm 2700-7000K

Comprehensive parameter	CRI	75
	Material	die-casting aluminum
	Beam Angle	120°
	Working temperature	-30~45°c
	Life span	50000hours

2.Features: Long service lifespan, super illuminating, high color rendering, high heat dissipation, no stroboscopic, no radiation ,energy-saving, light-declining, High Power.

3.Applications: widely used in shopping center, exhibition ball,parking lot, stadium , gymnasias, billboard, park, landmark or building,public square and passage, building connecting passage and other indoor or outdoor light applications.



LED Panel Light



1.Product Description:

Item type	Led panel light
Chip brand	Epistar / Bridgelux etc
Input Voltage(V)	AC85-265V, 50-60HZ
Lamp Body Material	Aluminum alloy
Lumens efficiency (lm/W)	90lm
Beam angle	120 degree
IP	IP20-IP54
CRI(RA)	>80
Power Factor (PF)	>0.90
Working lifetime(hour)	50,000
Working temperature °C	-20 ~ +50°C
Warranty	3 years
Color Temperature(CCT)	2800-6500K ; 3000K/4000K/5000K/6500K etc
Available color	warm white/natural white/pure white/cool white etc

2.Features : 1) Low heat and more environmental protection;2)Long lifespan, Easy for installation, ceiling or wall surface-mounted;3)High luminous efficiency and energy saving,Quickly start ,no flicker;4)Good function of heat dissipation, improve the lamp's lifetime

3. Applications: Replacement bulbs for traditional ceiling lamps ,especially for downlight, to save energy, popular for commercial, office, hotel, warehouse lighting etc



Solar Panel



1. Product Description: (poly, mono and flexible solar panel)

Maximum power (Wp)	250w
Maximum power voltage (V)	30V
Open circuit voltage (V)	36.3V
Short circuit current (A)	8.76A
Temperature Range	-40°C~+85°C
Tolerance Wattage (e.g. +/-5%)	+/-3%
Cell Efficiency(%)	>17.9%
Module Efficiency(%)	>15.27%
Warranty	5 years warranty and 20years 80% of power

2.Features: 1). High-quality imported poly or mono crystal cells with excellent light transmittance and output performance ; 2). High module conversion efficiency :our solar cell is over 17%, and solar panel is over 16%. 4). Long lifespan:Lifetime of 25 years, 10 years at 90% output and 20 years at 80% output.

3.Applications: Offer power for Solar system for home, power station ,irrigation, lighting etc



Solar Charger



ETFE Solar Charger for outdoor activities

1. Materials: The surface is :ETFE ,the solar cell is : Sunpower cell .

2. Features: 1).Semi-flexible, lightweight and foldable . 2). Made by by sunpower cell with 20%-22% efficiency . 3). Inbuilt stabilizer with muti-output adapter . 4). Reliable output, designed for permanent or semi-permanent mounting.

3. Applications: 1).Lightweight, waterproof solar panels are perfect for your Cabin or boat and camping. 2). Recommend to use on mobile phones or other electronicdevice with capacity lower than 3000mAh.



4.Specifications:

Item	LC-SC4	LC-SC5.3	LC-SC10.6	LC-SC15.9
Power	4W	5.3W	10.6W	15.9W
Vmp	5V	5.5V	5.5V	16.5V
Imp	800mA	0.96A	1.93A	0.96A
Weight	0.2kg	0.17kg	0.35kg	0.5kg
Size	275*190mm	261*164mm	263*340mm	262*510mm
Color	green,orange,red,blue,purple,rpseo			

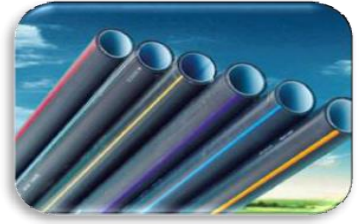
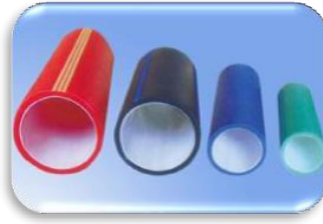
PET laminated solar panel/charger

1. Process : PET laminate solar panel, cut solar cells into small pieces by the laser machine, arrange the voltage and the current according to guests needs ,then put the single transparent PET, EVA, solar cells, EVA, PCB bottom plate in order to solar vacuum laminating machine for vacuum laminating, take out after 20 minutes , paste a layer of soft transparent protective film in the surface.

2. Materials: PET, EVA, Solar Cells **3.Applications:** Used For solar lawn, solar wall lights, solar handicrafts, solar toys, solar radio, solar flashlight, solar mobile phone charger, solar water pump, solar home / office power and portable mobile power systems and other products.



HDPE silicon core pipe



1. Material: It is a new type composite pipe with silicon solid lubricant in inner layer, material is High Density Polyethylene

2. Features: 1) Good sealing properties, chemical resistance, low construction cost
2) Strong, corrosion-resistant, high-temperature resistant. 3) Inner layer silicon core is being co-extrusion pressed into HDPE pipe, Cable in the pipe can be repeatedly extracted;

3. Applications: Widely used for protecting outdoor optic communication cable in highway, railway etc, public information network, public transport system, Cable pipe system



4.pecification for popular sizes

Specification (OD/ID)	OD (mm)	OD allowable deviation(mm)	ID min (mm)	Thickness of inner layer	Elasticity before coiling	Elasticity after coiling
25/20	25	0.3	20	2.5	≤1.5	≤2
32/28	32	0.3	26	3	≤2	≤3
40/33	40	0.3	33	3.5	≤2.5	≤3.5
46/38	46	0.4	38	4	≤3	≤5
50/41	50	0.4	41	4.5	≤3	≤5
63/54	63	0.4	54	5	≤3	≤5