

Embedded Color Under Vehicle Surveillance System-- Model: ADIAT3300

----Color CCD line scan camera

- Vehicle security control at the entrance
- To see what's hidden under the vehicle

ADI'S ADIAT3300 Under Vehicle Surveillance System is the fixed solution for the fully identification of threats or modifications to a vehicle's undercarriage. It can quickly and accurately identify threats , contraband objects and stowaway who are hidden at the bottom. Vehicles drive over the embedded scanning units while ADI'S's systems compile high-resolution images of a vehicle's undercarriage to create the vehicle's "fingerprint." It's easy to see any threatening objects that may be hidden on top of an axel or crossbeam. An overview camera captures the normal view of car and displays this on the high-resolution monitor .

ADI'S ADIAT3300 adopts embedded installation way. ADIAT3300 Under Vehicle Surveillance System is strictly designated on the conception of maintenance free and application in all weather with IP68 water-proof grade. These make sure the system can work steadily in any climate.

ADIAT3300 adopts advanced digital liner scanning imaging technology, with high image definition and resolution to ensure the complete image without omission.

ADI'S ADIAT3300 UVSS (IP68 Water-proof)



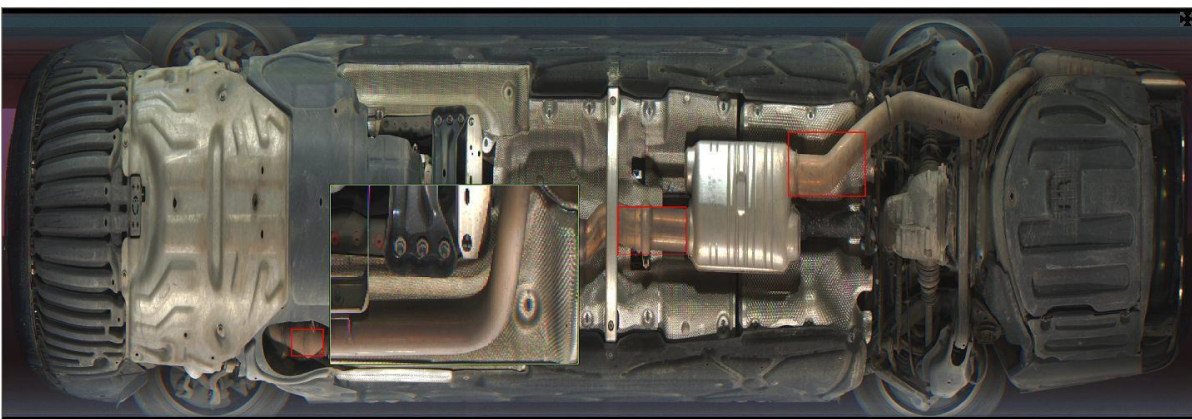
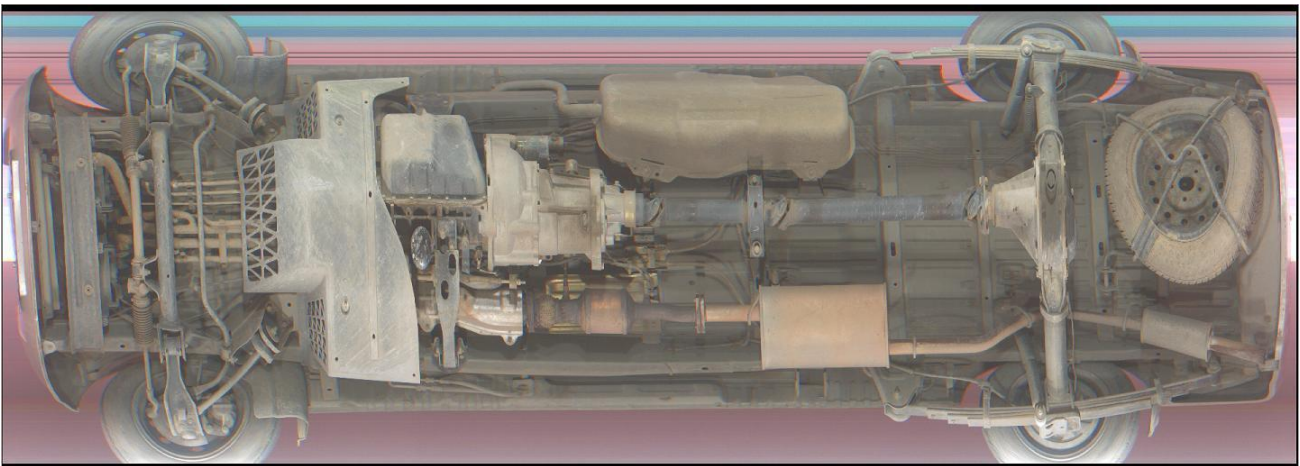
Color Image and auto capture vehicle plate number (Automatic alert to suspected articles)

Vehicle NO	Check Time	Check Result
鄂B1Q1A3	2015-04-01 09:55:28	Safety
	2015-04-01 07:38:18	Safety

2015-04-01 10:14:12 Login DVR successfully
 2015-04-01 10:14:12 Initial DVR successfully
 2015-04-01 10:14:12 Initial License Plate Recognition module success
 2015-04-01 10:14:11 Open the video capture device is successfully
 2015-04-01 10:14:11 Initial the underbody image parameters success
 2015-04-01 10:14:09

Under Vehicle Surveillance System

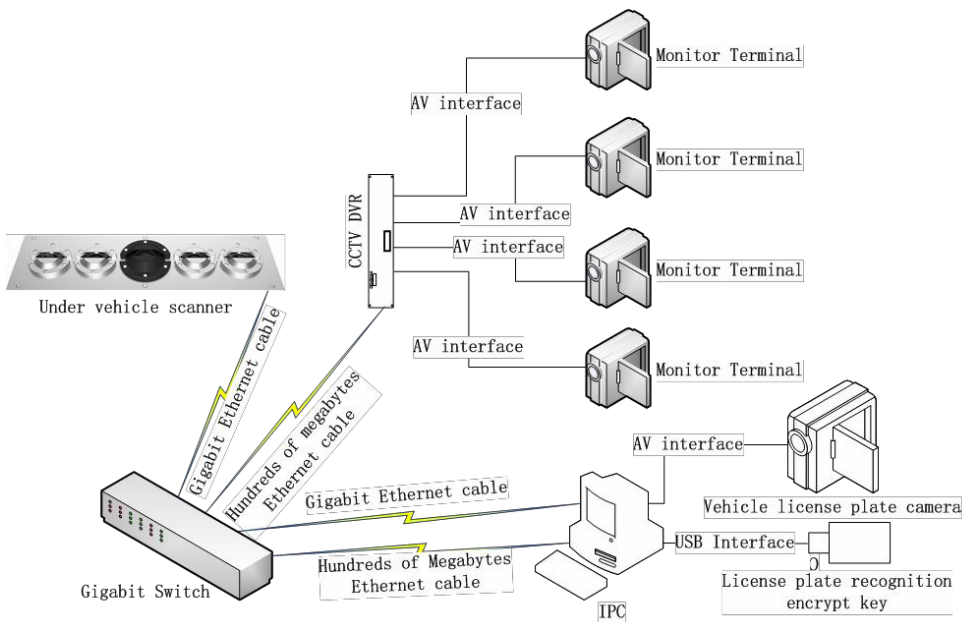
Full color scanning image



Features:

- Auto digital line scan, high-resolution undercarriage imaging.
- Decision Response Time: 2-3 seconds (the length of time from when the vehicle clears the scanning platform until the system automatically identifies the vehicle, automatically searches the under carriage and displays the decision results on the operator terminal)
- Applicable to variety of vehicles, wide vision :
Max Vehicle Length: 25 meters standard – longer vehicles can be scanned requires setup.
Vehicle Width: 2.75 meters standard – wider vehicles w/optional settings.
- Test will be completed during the vehicle maneuvers without stopping, adapted to different speed.
- Undercarriage image can be stored, retrieved, searched or compared with other images.
- Whole image display ion monitor, can zoom, playback, sign in the images, stretching and cutting, etc
- Multi entrance management model, and statistics of entering and exiting vehicles.
- Flexible detection process can be made on site to satisfy the needs of various work conditions.
- Image monitoring, video recording for different scenario

System Hardware Connection Structure



Advantage of UVSS:

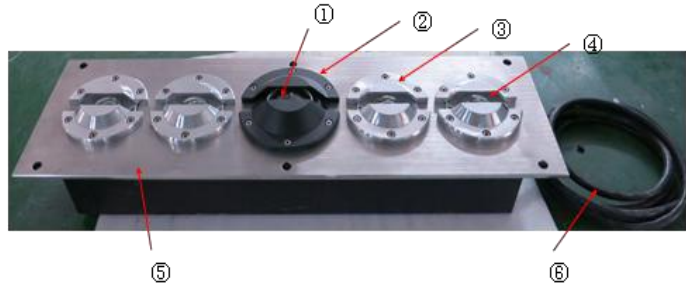
- No need to park vehicle, can bear speed below 30km/h
- Time of image display after scan <1s
- Image automatic save and automatic delete when hard disk is full

- Time of image saving or loading:<1s

Technical Specification :

Scanning unit :

- 1) Material : stainless steel
- 2) Dimension: 1100(L)*280(W)*205(H)mm
- 3) Weight : 105kg
- 4) Water-proof grade: IP68
- 5) Load bearing Weight: 50T



- ① CCD Line Scan Camera
- ② Stainless Steel protection cover
- ③ LED Illumination
- ④ LED light
- ⑤ AT3300 Main Frame
- ⑥ Main control cable
- ⑦ Rack Mount Equipment

Color CCD Line Scan camera :

- 1) Resolution: 5000* 2048 pixels,
- 2) Camera view: > 170° & Pixels size: 14μm* 14μm
- 3) Line rate(max)19kHz
- 4) ADC Resolution: 12 bit & Responsivity : 41V/uJ/cm²
- 5) Image format : color
- 6) Power Supply: 24VDC, 3A
- 7) Transfer interface/distance : Gigabit Ethernet/100m
- 8) Sealed unit to protect against heat, dust, water and vibration
- 9) Operating Temperature Range: -25 °C to +60 °C

LED Illumination: LED light for clear image in day and night

- 1) Power Supply: 24VDC, 320W
- 2) LED light service life: 50,000 hours
- 3) Operating Temperature Range: -25 °C to +60 °C
- 4) Illumination : 0.01 Lux

Vehicle Plate Number Capture Camera : Strong Light Inhibition+ Nigh vision, IP67 water proof and antifog

Specification:

1. The imaging element, 1/2.8" SONY Exmor , 2.1 Megapixel
2. Resolution: Full HD/1080P(1920x1080) + Full D1
3. Minimum illumination: color: 0.05Lux at F1.2 / special light condition: 0.001Lux at F1.2
4. Super-WDR: support
5. Compress standard: H.264 Main Profile @ Level 4.1 / Motion JPEG
6. Frame rate: 25 fps
7. Multibit Rate: FHD/1080P + Full D1 + CVBS
8. video flowing: multi H.264 and M-JPEG
9. Support 16:9 display format
10. 3 D Noise Reduction: Reduce every frame image noise so that the image appears more clearly
11. Horizontal resolution : >1000TVL(1920x1080 pixels)
12. 1-30M adjustable IR distance
13. Save: support PC, NVR, TF card



14. Network: network port: 1 unit RJ45, 10/100M; 1 unit BNC port, 1pc power input port
15. Network protocol: IPv4, TCP/IP, UDP, HTTP, DHCP, RTP/RTCP/RTSP, FTP, UPnP, DDNS, NTP, IGMP ICMP, etc
16. Access protocol: WEB, SDK API, ONVIF
17. Operation temperature:-10℃—50℃
18. Dimension: (L) 390mm× (W) 140mm× (H) 143mm
19. Video output: 1.0Vp-p,75Ω
20. Power supply :DC12V
21. Remote Reset: Through the network control remote reset system
22. Built-in WatchDog : automatic parking position system under special condition to make sure the system work
23. Lens: f=6mm/8mm/12mm 3MP

Distribution box :

- Dimension:600(L)*300(W)*1000(H)mm
- Weight: 30kg
- Input: 2 channels induction coil
- Output: 1 Channel switch type 12VDC
- Communication port: RS485, 1000M Ethernet (Optional)
- Operating Temperature: -25℃ to 60℃
- Distribution box inside have a air dry circulation system which to monitor under vehicle scanning part's real time temperature, humidity, pressure.



Computer :

Operation table (combine with monitor and computer)

1. Brand: Grantech (SYM76941 VGGA)
2. Processor : Intel (R) Pentium(R), CPU G3250@3.2GHz/3.19GHz
3. Memory (RAM): 4GB
4. Graphics :512M
5. Hard Disk: Hard Disk 500G
6. Dual LAN (at least one Intel Gigabit)
7. USB2.0 (Up to 2 pieces)
8. Monitor: 22" LED, resolution up to 1920*1080
9. Scene Video Record: 4 channels, Compression algorithm of scene video: H264
10. Operational system: Windows XP or Windows 7 (32 bit) (optional)
11. Console :Dimension:650(L)*610(W)*1220(H)mm, gross weight : 55kg



- ① operation table .
- ②DVR (optional)
- ③ 22 inch monitor
- ④ Industrial Personal Computer
- ⑤start button

Optional :

- *ALPR-Automatic License Plate Recognition software : via IP Camera captures license plate, ALPR software processing and automatically presents license plate on screen
- * Screen Video display: displays live video feed from overview camera on operator terminal screen.
- * To connect anti-collision system, barrier, etc
- * To compatibly packing management solution

Color Mobile Under Vehicle Surveillance System—Model AT3000

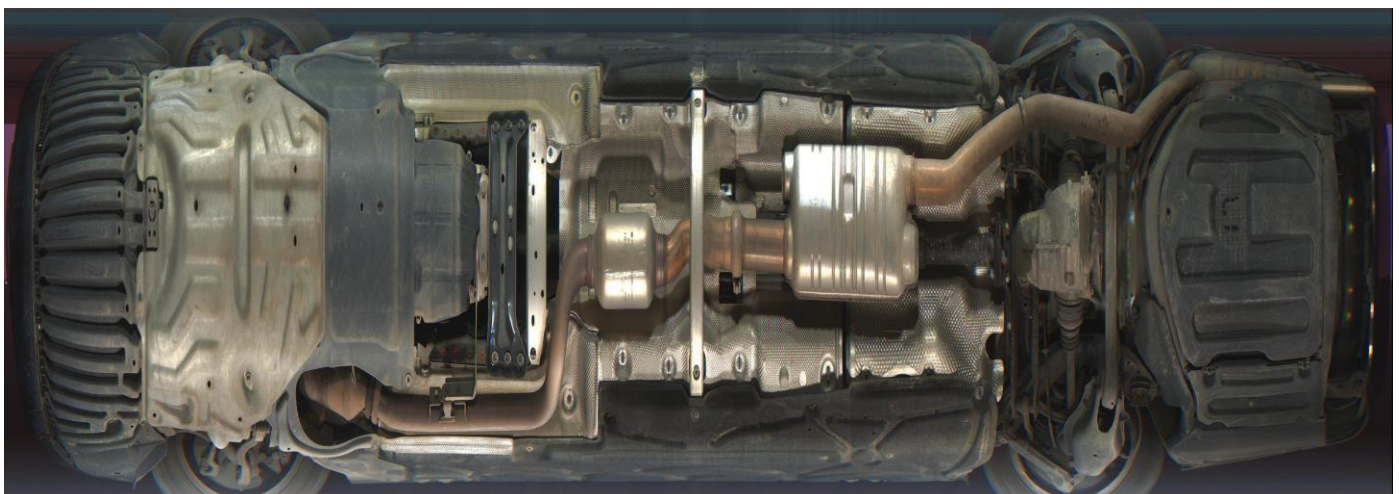
----Color CCD line scan camera

- Vehicle security control at the entrance
- To see what's hidden under the vehicle

ADI'S Under Vehicle Surveillance System mainly adopt to inspect the beneath part of a variety of vehicles. It can quickly and accurately identify threats/ contraband/ smuggling of persons hiding at the bottom. AT3000 UVSS greatly improved vehicle safety inspection speed and accuracy, reduce investment in human resources.



Full Color Scanning Image

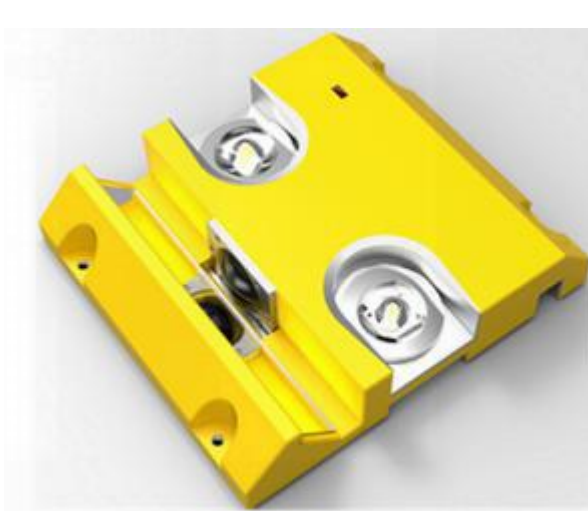


Color Image and Cars plate recognition (Automatic Alarm to suspected articles)

The top portion of the image shows a detailed top-down view of a car's chassis, highlighting the engine, transmission, and suspension components. Below this, on the left, is a photograph of a dark-colored car with a license plate that reads 'B 261CE'. To the right of the car photo is a software interface window. This window includes a table with the following data:

Vehicle ID	Check Time	Check Result
CFM951	2013-11-04 15:50:09	Safety
B261CE	2013-11-04 15:39:52	Safety
B261CE	2013-11-04 15:39:50	Safety
B261CE	2013-11-04 15:39:46	Safety

Below the table is a log of system events, including 'Save the license plate image successful', 'start License Plate Recognition', and 'snap success'. To the right of the interface is a control panel with buttons for 'Image Operation' (Magnifier, Full Screen, Most Suitable, Real Stop, Brighten, Darken, Restore, Contrast, Edge, Super, Open, Save) and 'Function Operation' (Data Query, Attribute Set, RT Curve, Language, Parameter Set, Exit). The logo 'VSCAN Under Vehicle Inspection System' is visible in the bottom right corner.



**Flight case: Can accommodate all the parts.
It is also a control console
Tripod and Camera: For Vehicle license
plate recognition**



Features:

- Auto digital line scan camera, with high-resolution and clarity of the image.
- The complete image of under vehicle scanning, without any omissions, and the image is clear, complete, no distortion, can be clearly observed that the object is not less than 2mm in diameter.
- IP68 high protection grade, anti-pressure shock, adapt to any climatic environments.
- Preparation of inspection processes to meet a variety of on-site needs.
- Multiple scene image monitoring, recording function.
- Multi-language user interface design.
- Support image recognition and RFID technology for vehicle identification.
- Strong scalability to easily achieve a variety of system linkage control. (E.g.: anti-collision system, barrier, etc.).

Technical parameters:

- Image resolution : 12000 * 6144
- Check the width viewing angle: not less than 4 meters
- Speed of vehicle: < 30km/h with ALPR (Automatic License Plate Recognition)
< 70km/h without ALPR (Automatic License Plate Recognition)
- Effective field of view(FOV): less than 170°
- FOV inspecting width: < 4 meters
- LED Illumination : 160W
- Weight capacity: 30T
- Water-proof grade: IP68
- Scanning device weight: 15KG
- Scanning device Dimension:400(L)*340(W)*75(H)mm
- Communication interface: RS232/RS422
- Operating Temperature: -25°C to 60°C
- Storage temperature: -25°C to +75°C
- Operating voltage: 110-240V AC, 50-60HZ
-

Color CCD Line Scan camera :

- 1) Resolution: 5000* 2048 pixels,
- 2) Camera view: > 170° & Pixels size: 14μm*14μm
- 3) Line rate(max)19kHz
- 4) ADC Resolution: 12 bit & Responsivity : 41V/uJ/cm²
- 5) Image format : color
- 6) Power Supply: 24VDC, 3A
- 7) Transfer interface/distance : Gigabit Ethernet/100m
- 8) Sealed unit to protect against heat, dust, water and vibration
- 9) Operating Temperature Range: -25 °C to +60 °C

Vehicle Plate Number Capture Camera : Strong Light Inhibition+ Nigh vision, IP67 water proof and antifog

Specification:

1. The imaging element, 1/2.8" SONY Exmor , 2.1 Megapixel
2. Resolution: Full HD/1080P(1920x1080) + Full D1
3. Minimum illumination: color: 0.05Lux at F1.2 / special light condition: 0.001Lux at F1.2
4. Super-WDR: support
5. Compress standard: H.264 Main Profile @ Level 4.1 / Motion JPEG
6. Frame rate: 25 fps
7. Multibit Rate: FHD/1080P + Full D1 + CVBS
8. video flowing: multi H.264 and M-JPEG
9. Support 16:9 display format
10. 3 D Noise Reduction: Reduce every frame image noise so that the image appears more clearly
12. Horizontal resolution : >1000TVL(1920x1080 pixels)
12. 1-30M adjustable IR distance
15. Save: support PC, NVR, TF card
14. Network: network port: 1 unit RJ45, 10/100M; 1 unit BNC port, 1pc power input port
15. Network protocol: IPv4, TCP/IP, UDP, HTTP, DHCP, RTP/RTCP/RTSP, FTP, UPnP, DDNS, NTP, IGMP ICMP, etc
16. Access protocol: WEB, SDK API, ONVIF
17. Operation temperature: -10°C—50°C
18. Dimension: (L) 390mm × (W) 140mm × (H) 143mm
19. Video output: 1.0Vp-p, 75 Ω
20. Power supply :DC12V
21. Remote Reset: Through the network control remote reset system
22. Built-in WatchDog : automatic parking position system under special condition to make sure the system work
23. Lens: f=6mm/8mm/12mm 3MP



System Host

- Brand: Grantech (UFO6377H-SP1-953)
- CPU: Intel (R) Pentium(R), CPU G3250@3.2GHz/3.19GHz
- Memory: 2G(optional 4G); Hard Disk: SATA2 Hard Disk 500G
- Graphics: Inter(R) Gen 5.0 Integrated Graphics Engine
- Dual LAN (At least one Intel Gigabit)
- USB2.0 (Up to 4 pieces)
- Monitor: 22 inch LED, resolution up to 1920*1080
- Operational system: Windows XP or Windows 7 (32 bit) (optional)
- Console dimension :670(L)*550(W)*750(H)mm, gross weight :52kg

Optional :

- * ALPR (Automatic License Plate Recognition) software
- * To connect anti-collision system, barrier, etc
- * To compatibly packing management solution

