







Large grey cylindrical component, possibly a filter or separator, mounted on a metal frame.

Grey metal cabinet housing various electrical and control components, including a control panel with a digital display and several switches.

Large black cylindrical component with a silver top section, possibly a motor or a specialized filter.

Row of grey electrical control boxes or terminal blocks mounted on a metal rack.

Grey metal cabinet with a label that reads "ATLANTIC ELECTRIC" and "GENERATOR".







B1



3

3

Technical label with diagrams and text.

157711



3

1-1-266-080

1-1-266-080

1-1-266-080

ENGINE CONTROL PANEL
EPI
IF PIN HAS BEEN KEPT
IF PIN IS NOT KEPT
TEST SWAMP PUMP



DANGER
HIGH VOLTAGE
UNAUTHORIZED PERSONNEL
KEEP OUT

DANGER
HIGH VOLTAGE TURN
OFF POWER BEFORE
SERVICING

DANGER
PANEL CONTAINS
MORE THAN ONE
SOURCE OF VOLTAGE



ENGINE CONTROL PANEL
EPI
IF PIN HAS BEEN KEPT
IF PIN IS NOT KEPT
TEST SWAMP PUMP



DANGER
HIGH VOLTAGE
UNAUTHORIZED PERSONNEL
KEEP OUT

DANGER
HIGH VOLTAGE TURN
OFF POWER BEFORE
SERVICING

DANGER
PANEL CONTAINS
MORE THAN ONE
SOURCE OF VOLTAGE





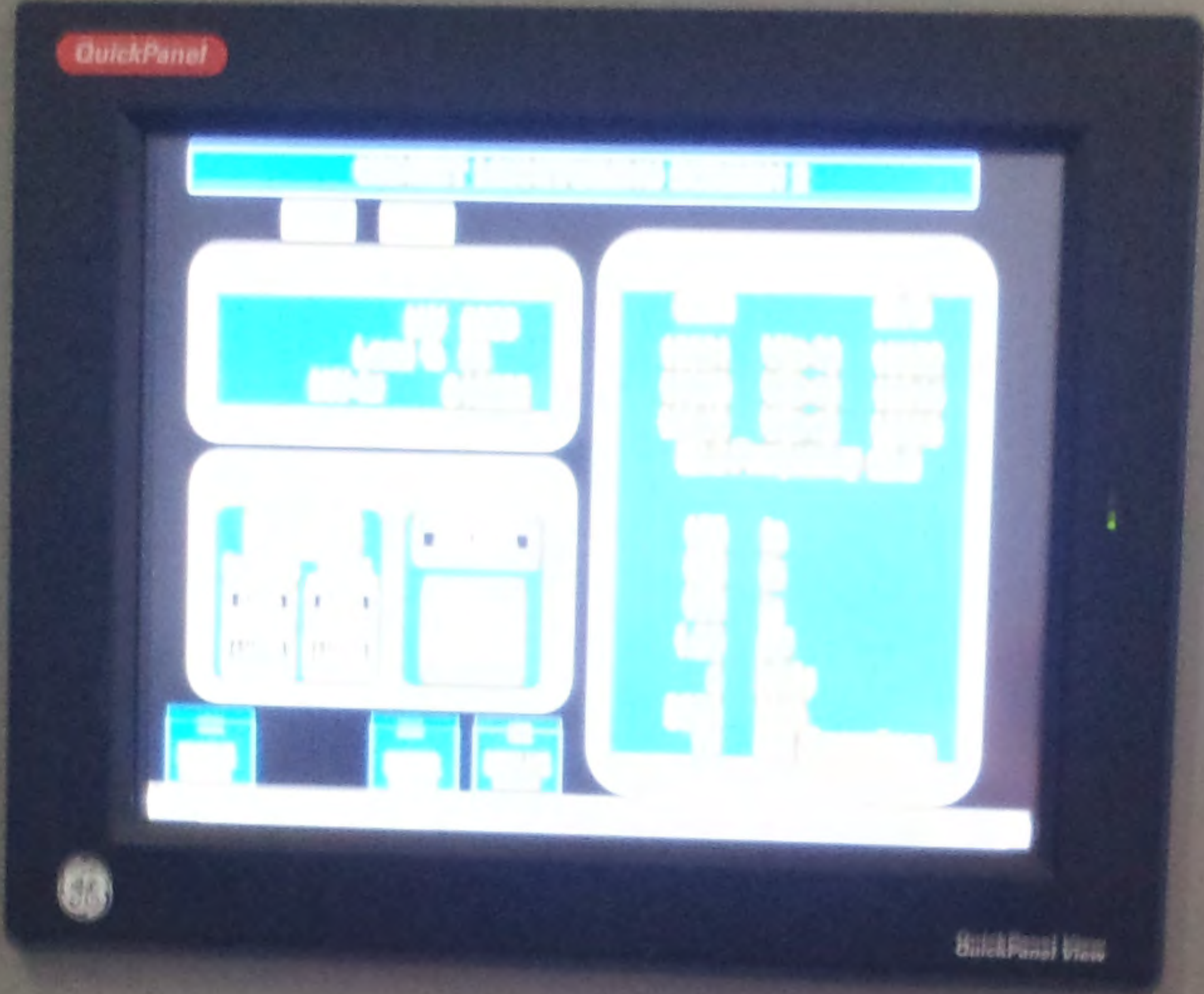
DANGER
HIGH VOLTAGE
INSULATED FRONT
KEEP OUT

DANGER
HIGH VOLTAGE
DO NOT TOUCH
BEFORE
SERVICING

DANGER
FUEL CONTAINS
MORE THAN THE
SOURCE OF FUEL GAS



GENERATOR CONTROL PANEL
(ECP)
GE P/N: BAAZ0733CP4
GE S/N: DC 1407000L
TEST STAMP: PASSED



DANGER
HIGH VOLTAGE
UNAUTHORIZED PERSONNEL
KEEP OUT

DANGER
HIGH VOLTAGE TURN
OFF POWER BEFORE
SERVICING

DANGER
PANEL CONTAINS
MORE THAN ONE
SOURCE OF VOLTAGE





DEAR CONTROL PANEL
STOP
IF THE INDICATORS
OF THE MOTOR
TEST CAMP 10000

The control panel features a digital display with two analog-style gauges at the top. The left gauge shows a needle pointing to approximately 10 on a scale of 0-100. The right gauge shows a needle pointing to approximately 50 on a scale of 0-100. Below the gauges, there are several rows of status indicators, each consisting of a small light (red or green) and a corresponding label. At the bottom of the panel is a grid of approximately 20 physical buttons.



DANGER

HIGH VOLTAGE
UNAUTHORIZED PERSONNEL
KEEP OUT

DANGER

HIGH VOLTAGE TURN
OFF POWER BEFORE
SERVICING

DANGER

PANEL CONTAINS
MORE THAN ONE
SOURCE OF VOLTAGE





ENGINE CONTROL PANEL
ECP1
GE P/N: 844201802P3
GE S/N: EC 1401010
TEST STAMP: PASSED



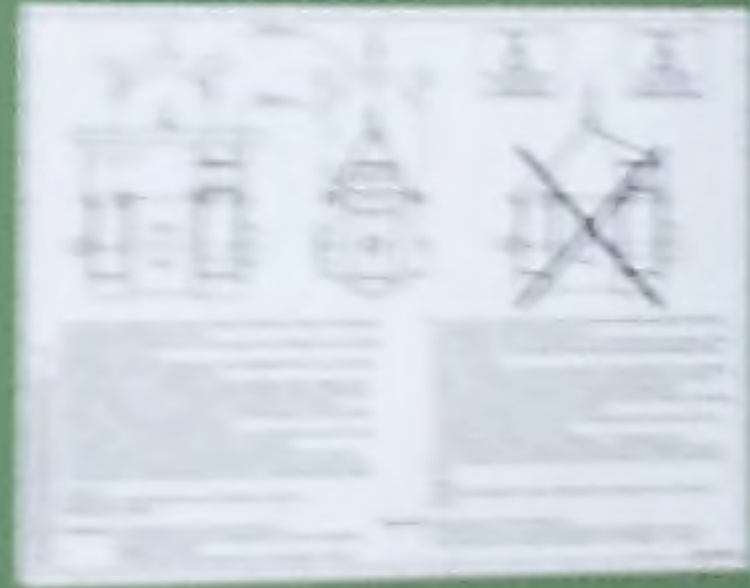
DANGER
HIGH VOLTAGE
UNAUTHORIZED PERSONNEL
KEEP OUT

DANGER
HIGH VOLTAGE TURN
OFF POWER BEFORE
SERVICING

A2

3

3



Warning







