

## Austria Hotel Project Design Description

### Building overview;

1. The building area is 674.3 m<sup>2</sup>; the ceiling height of the container structure is 2.6m (the lowest floor to the indoor roof panel)

### Buidling Load;

Wind;	<u>1.0</u> kN/m <sup>2</sup>	Roof dead load;	<u>0.35</u> kN/m <sup>2</sup>
Roof live load;	<u>1.0</u> kN/m <sup>2</sup>	Floor live load;	<u>2.0</u> kN/m <sup>2</sup>

### Material parameters;

Roof panel: outdoor 0.5mm color steel corrugated veneer (color steel plate is galvanized AZ50g/m<sup>2</sup>+ topcoat 15/5um) +175mm glass insulation cotton (ordinary) + indoor 0.5mm color steel ceiling (color plate is galvanized) AZ50g/m<sup>2</sup>+ topcoat 15/5um)

Floor: 100mm glass insulation cotton + 18mm cement fiber board + 1.5mm PVC floor / 18mm cement fiber board + 3mm PVC floor (aisle)

Wall panel: 75mm thick glass wool sandwich panel, double panel 0.45mm, glass wool density 50kg/m<sup>3</sup> (color steel plate is galvanized AZ50g/m<sup>2</sup>+ topcoat 15/5um)

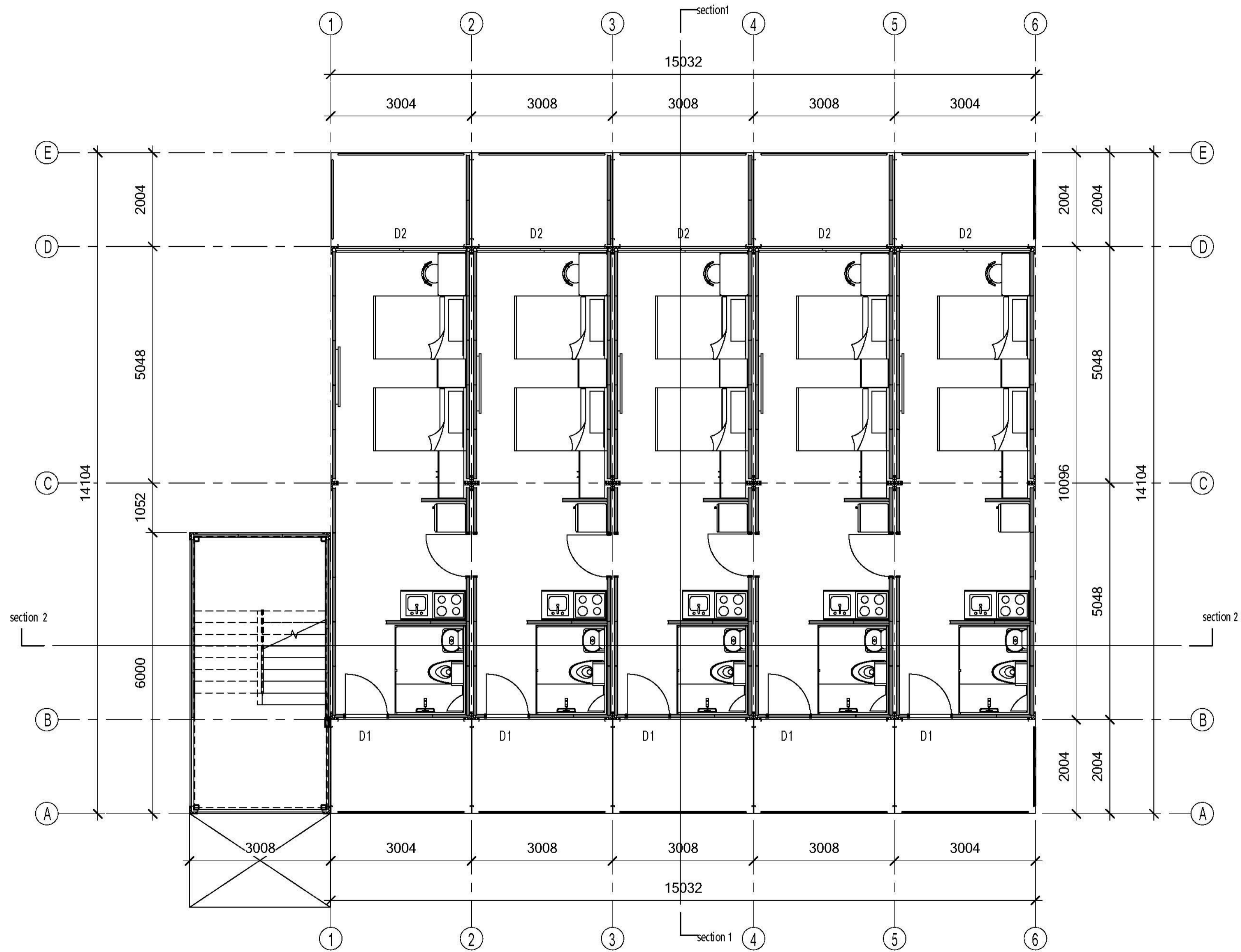
The overall frame: box top, bottom, column , main beam, column is galvanized, surface powder treatment.

Gate: D1: 930 \* 2080mm Steel single door insertable type

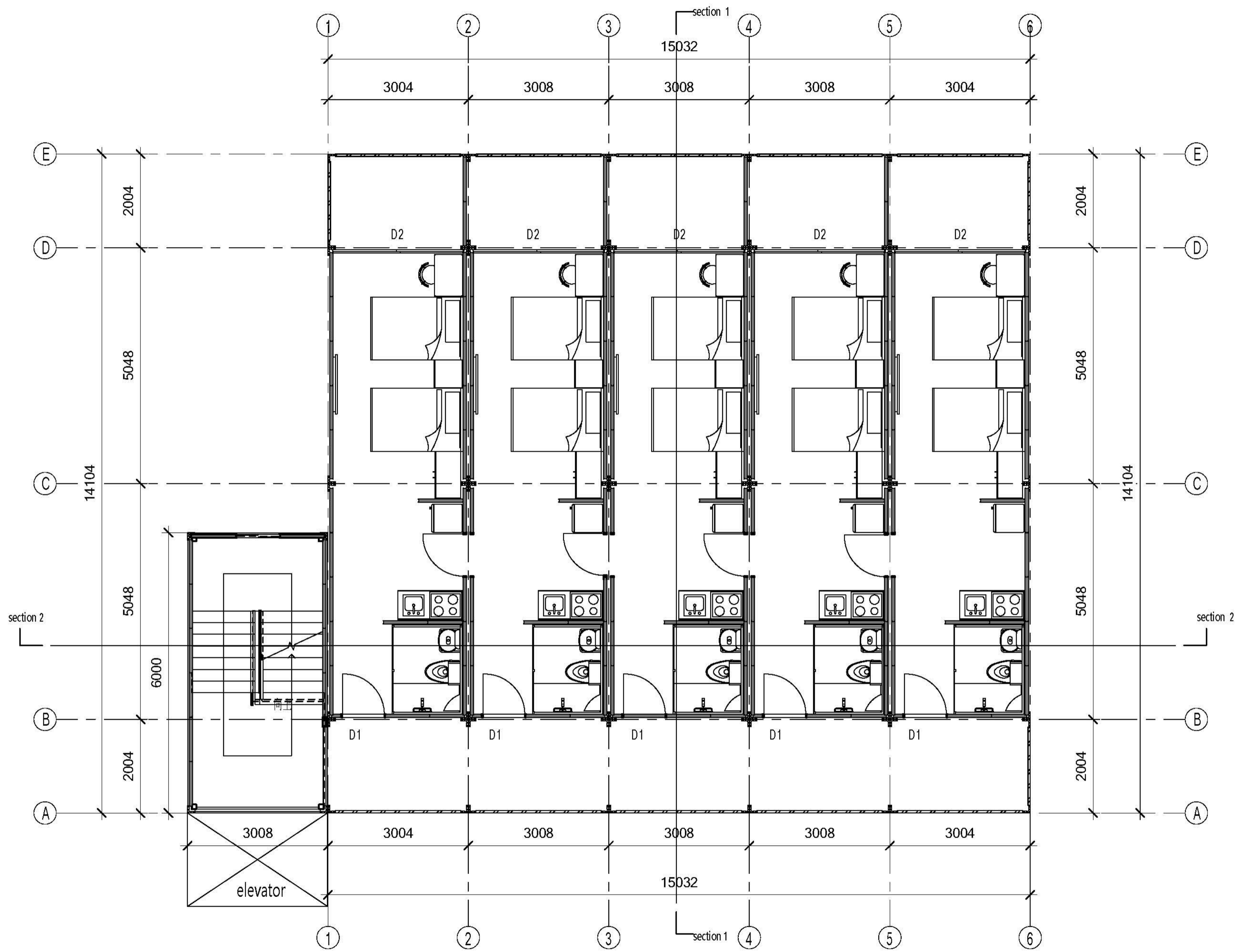
D2: 2800\*2600mm PVC double tempered glass filled with argon sliding door

### Advantage description:

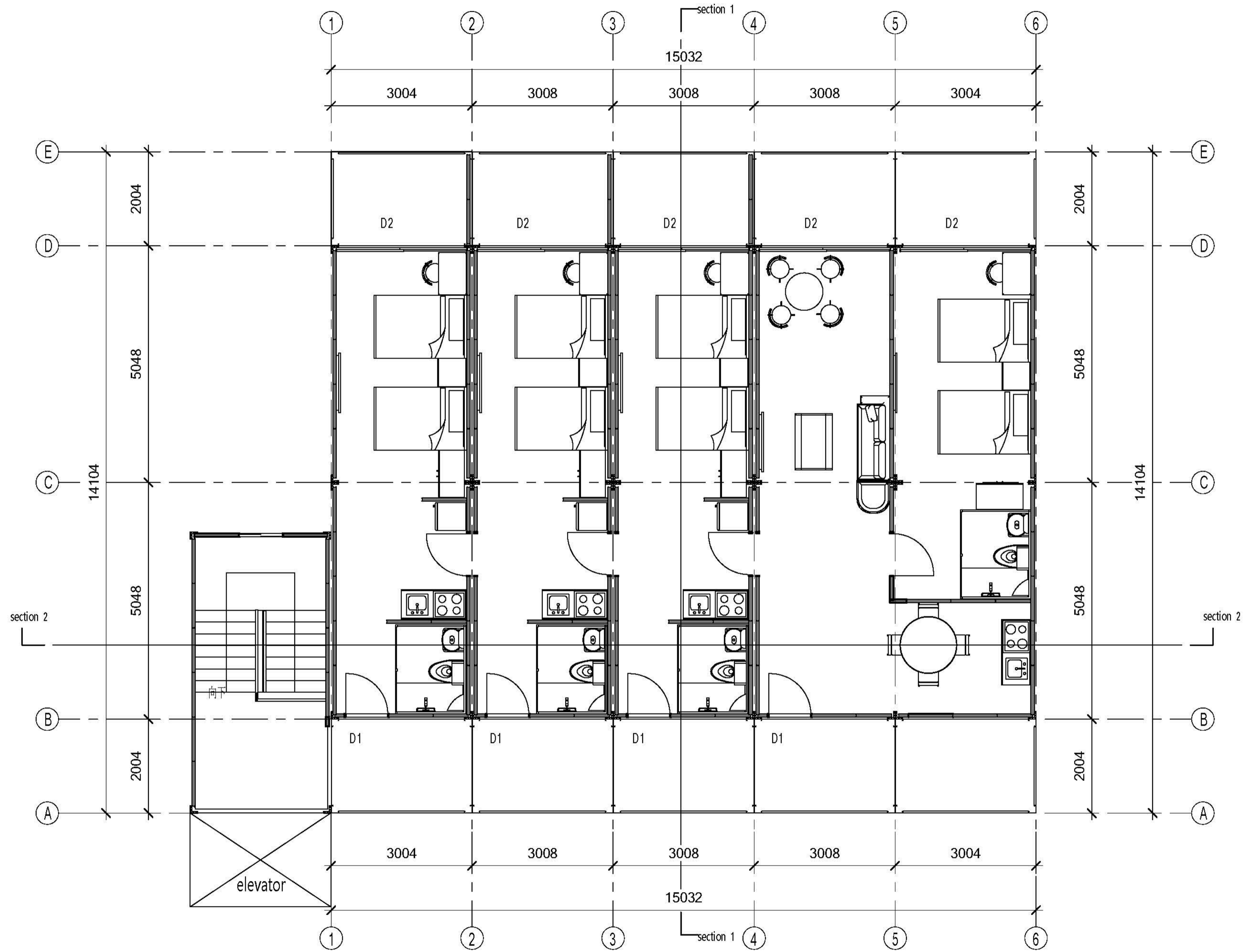
1. PTH container module has high safety: earthquake resistance (8.0 grade) wind resistance (150km/h), compression resistance (2KN/m<sup>2</sup>)
- 2, Mobility: Because the module has independent use function, it can be freely separated and shipped in the case of hotel migration (also has high economy)
- 3, convenience: single module installation, 2 unprofessional workers can complete the frame assembly in one hour
4. Durability: All frames are hot-dip galvanized, the outer main frame is sprayed, the anti-corrosion performance is superior, the service life is >20 years, and maintenance is not required within 10 years under normal use.
5. Economical: The container building of the independent unit does not require professional foundation construction. Only four horizontal fulcrums can be used to install a container house. All the connections on the site are bolted and there is no welding on site.



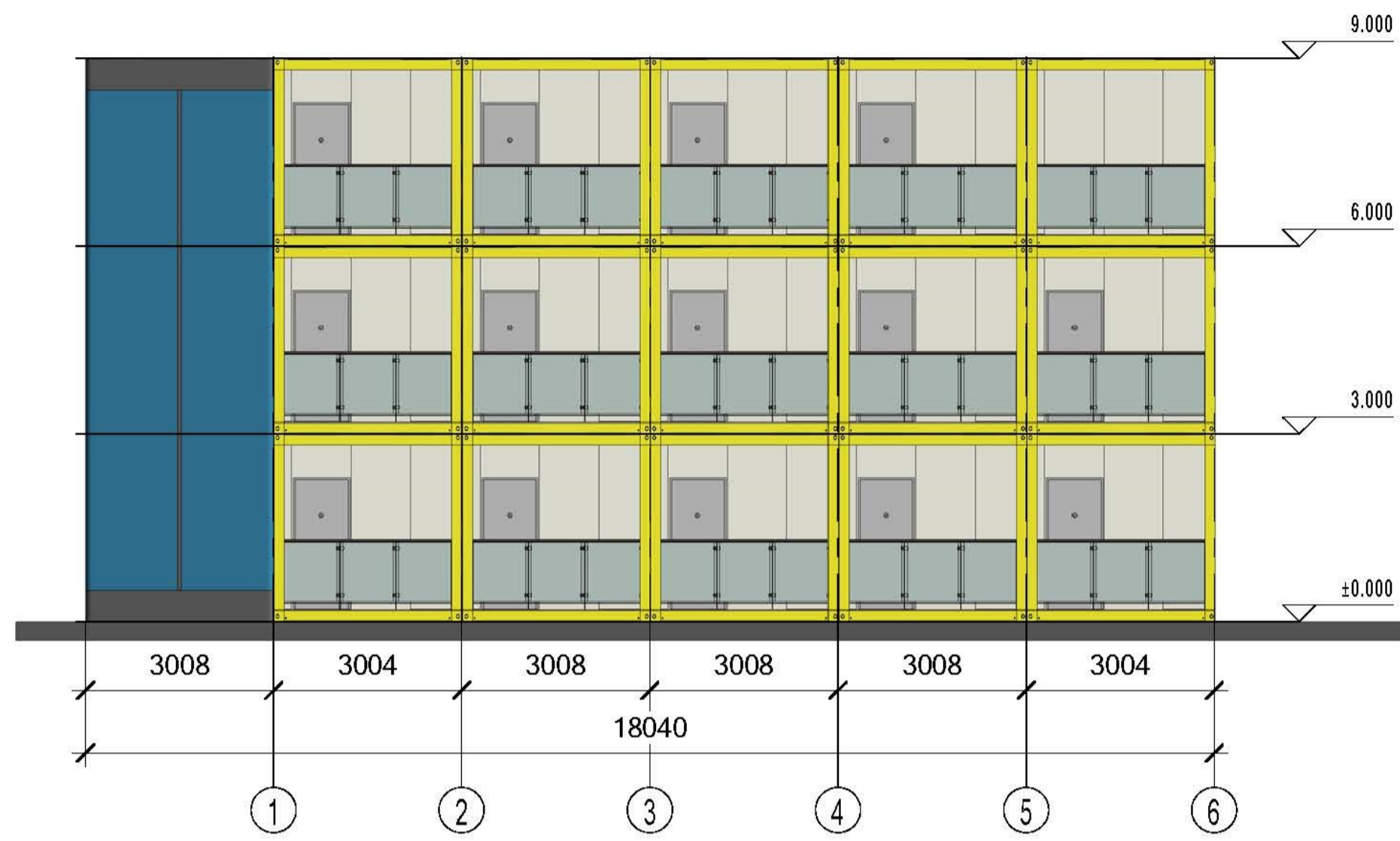
Ground floor



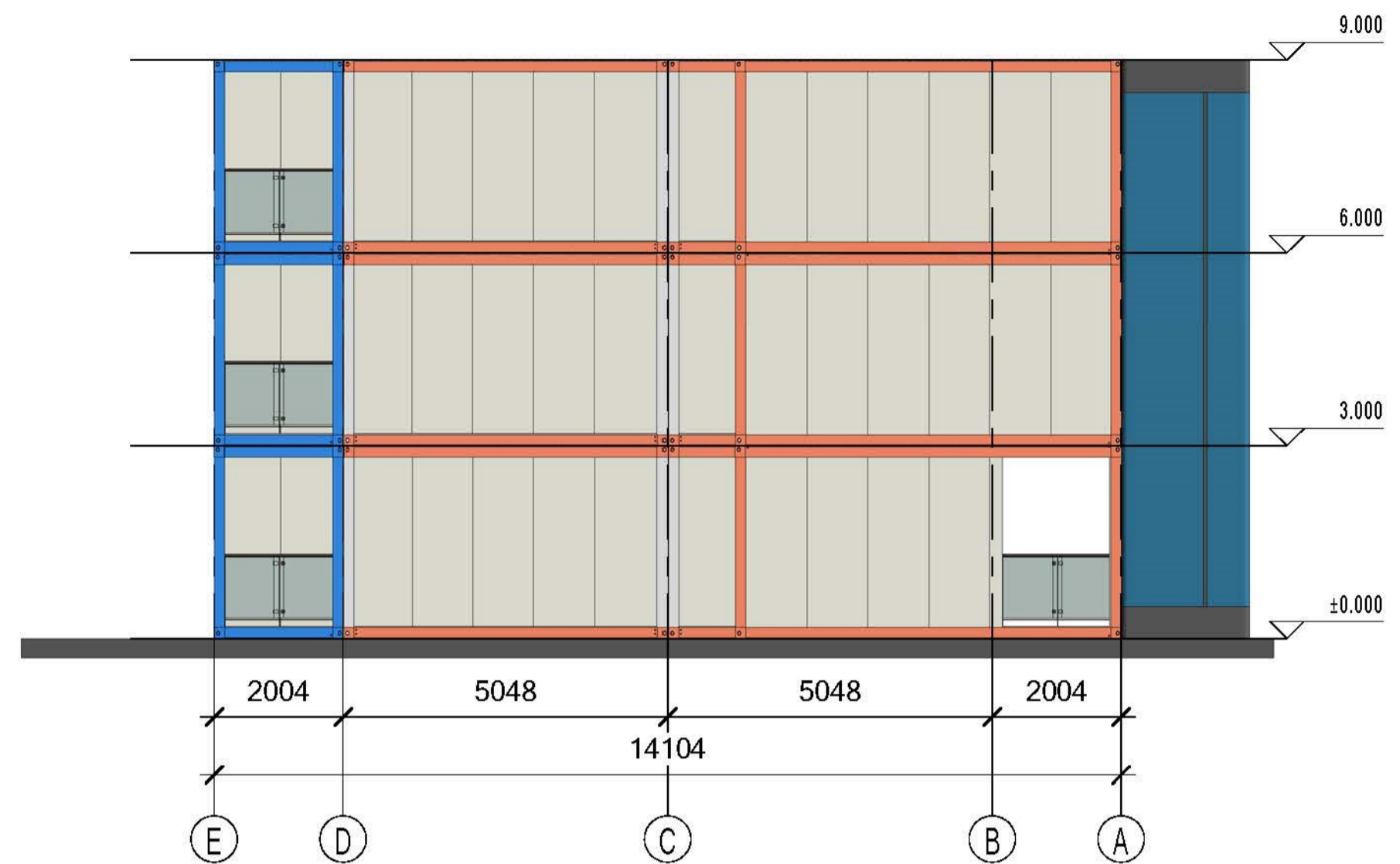
First floor



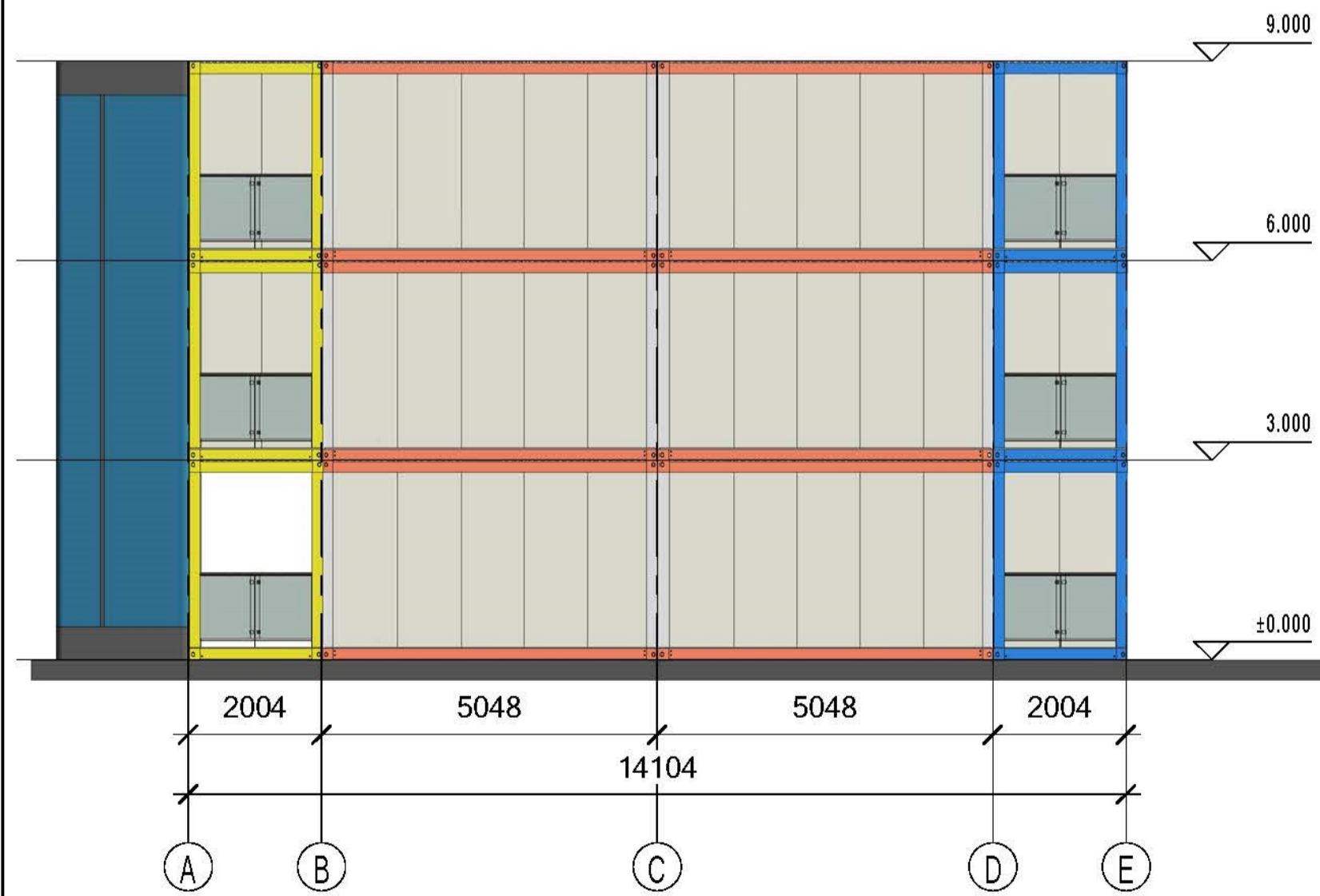
Second floor



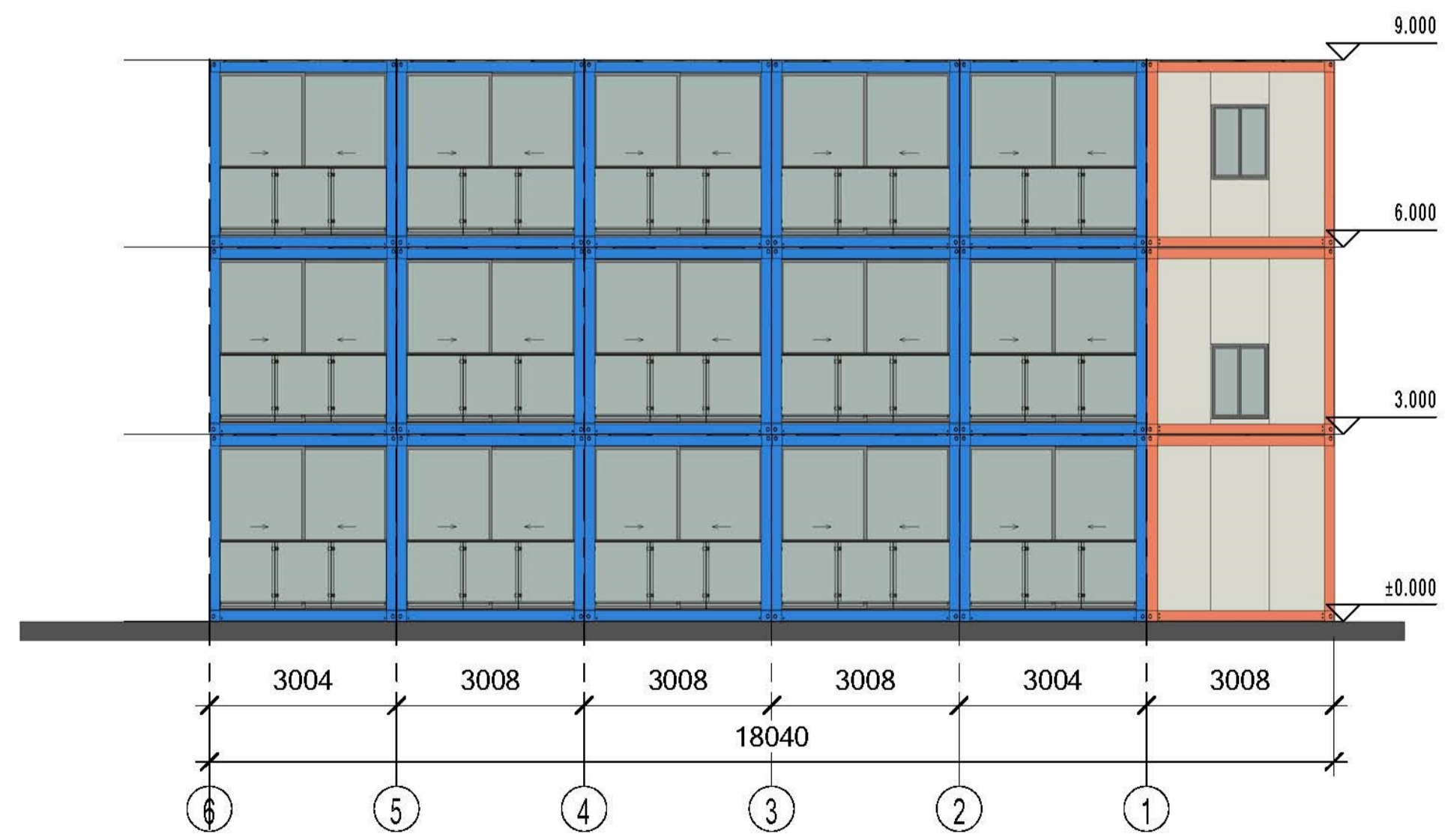
South



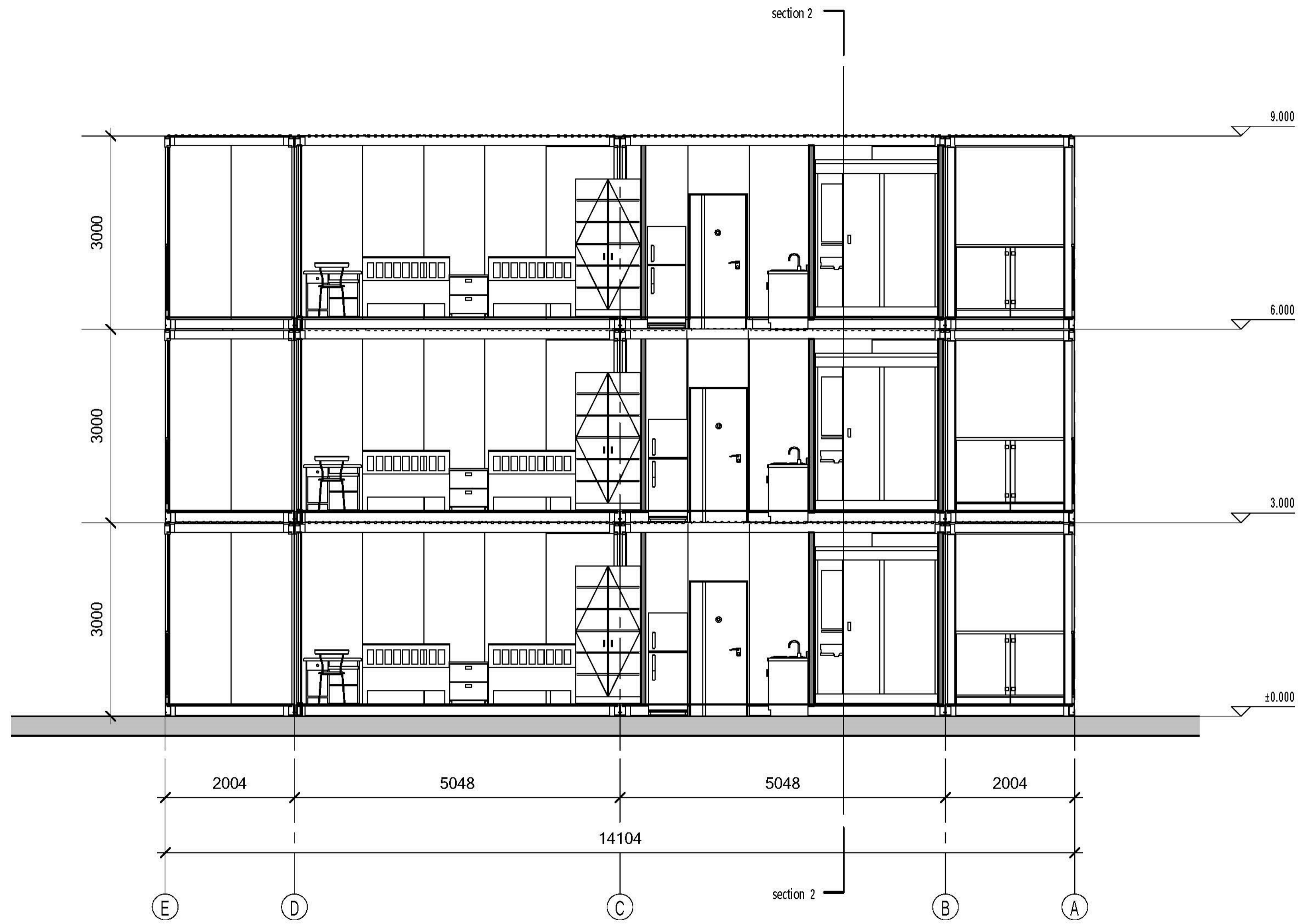
West



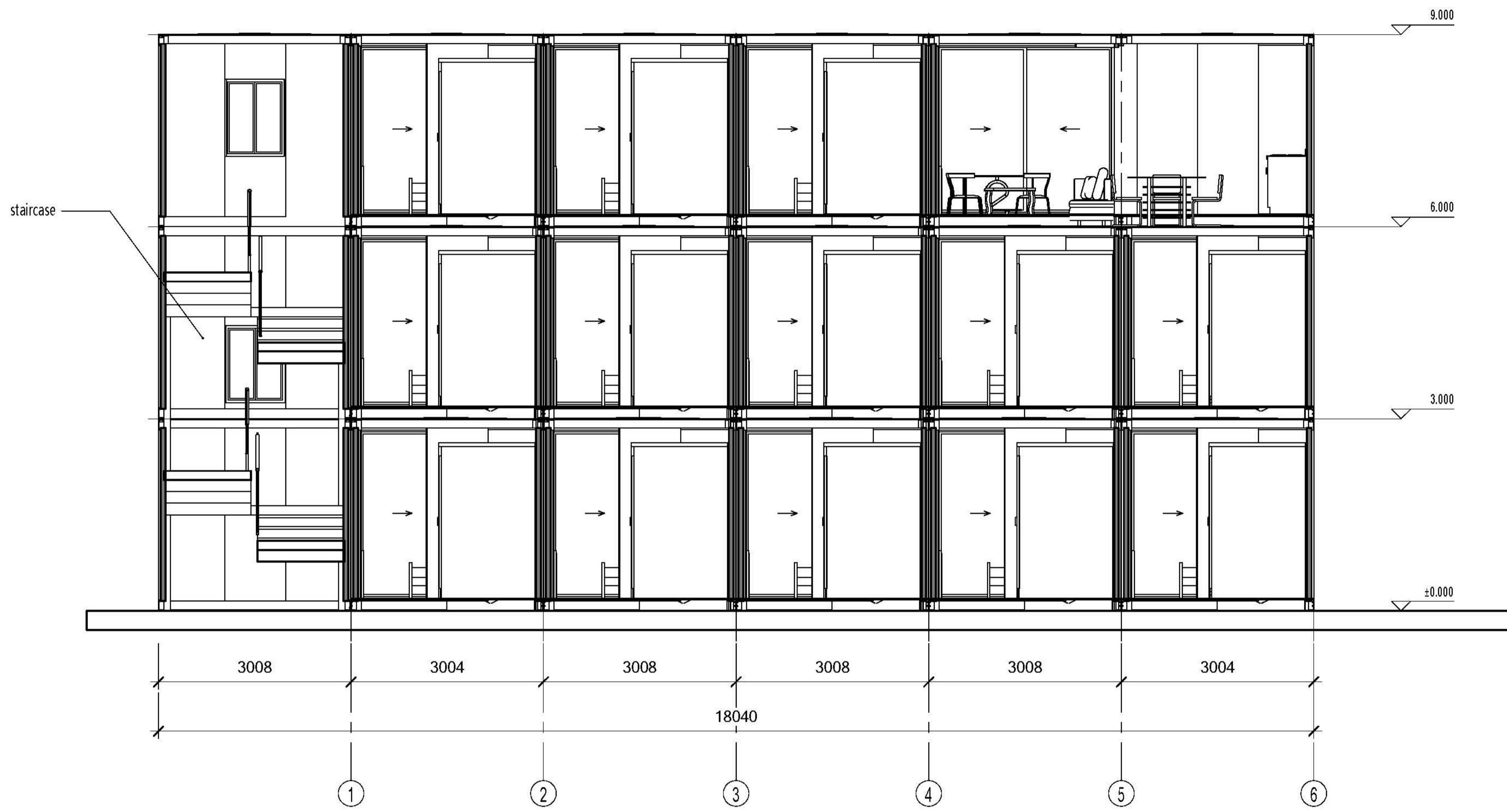
East



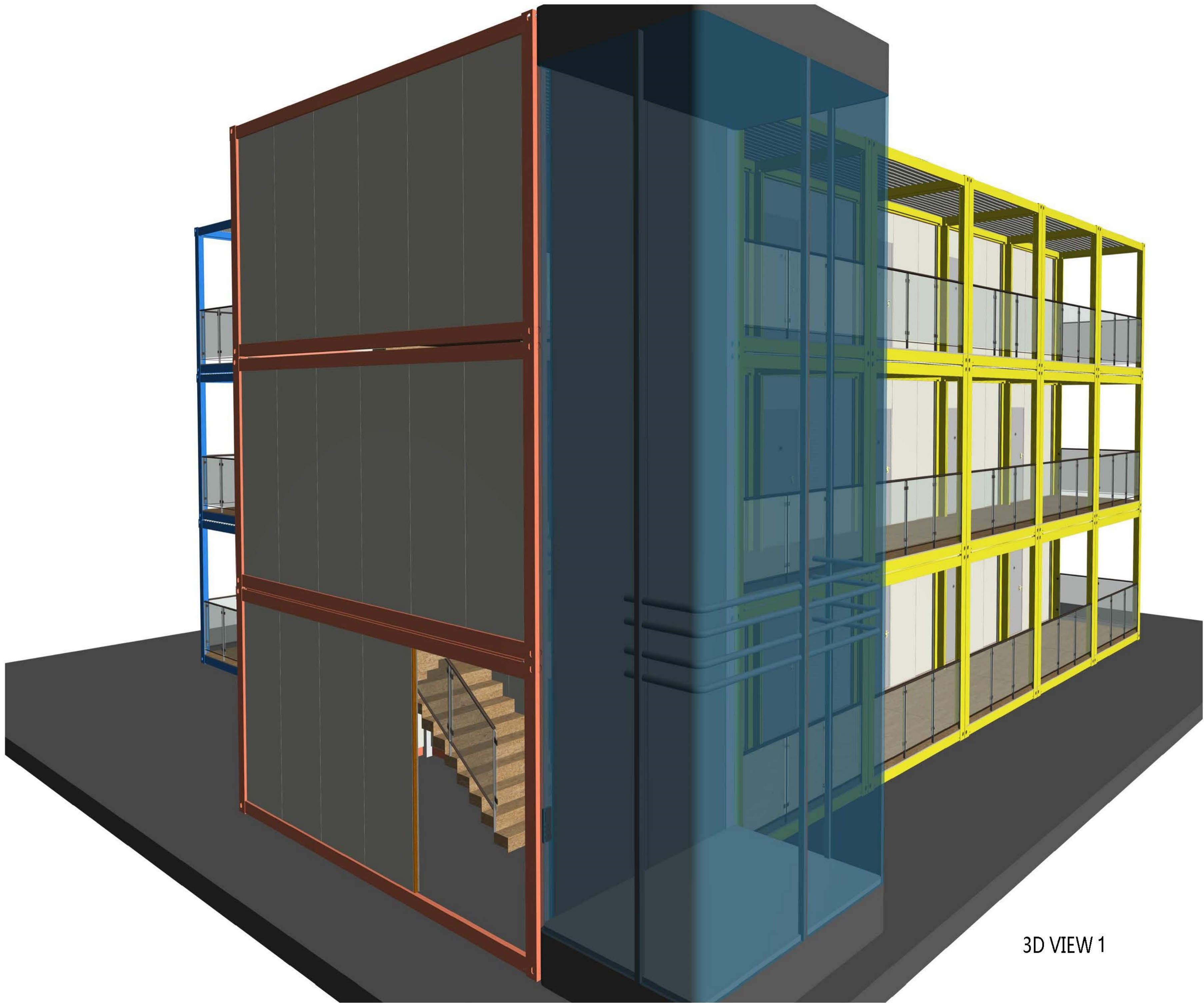
North



Section 1

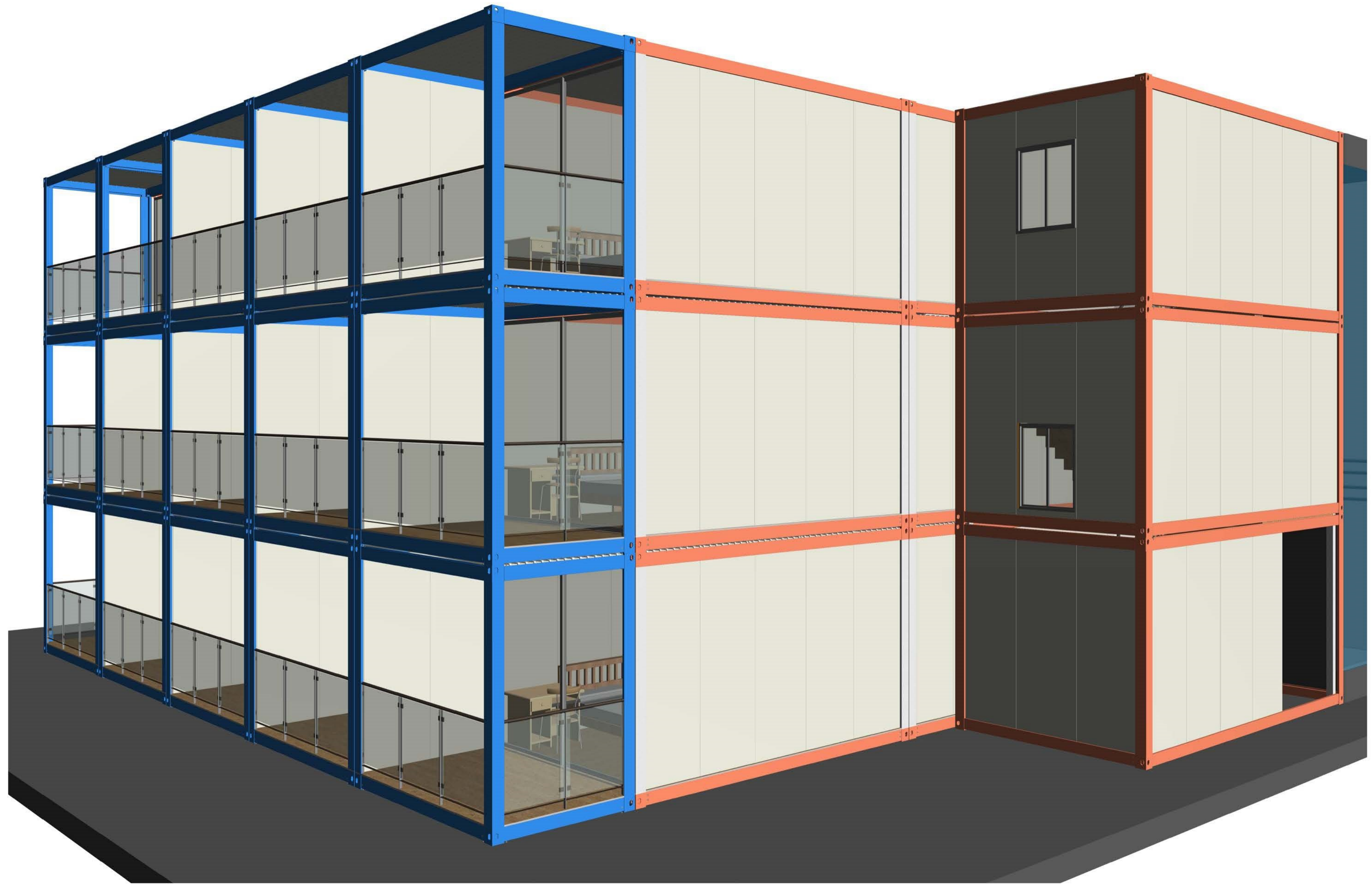


Section 2

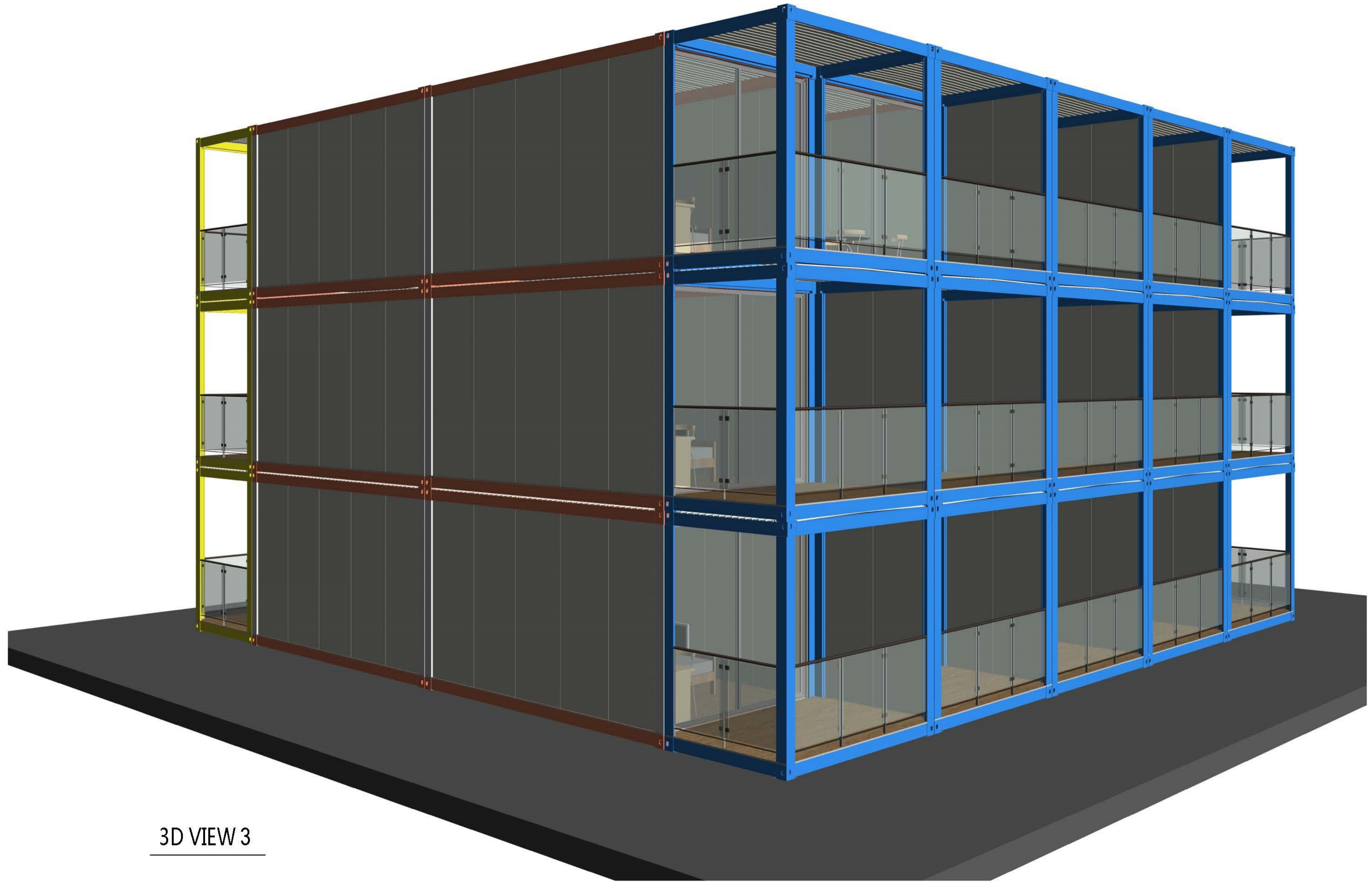


3D VIEW 1

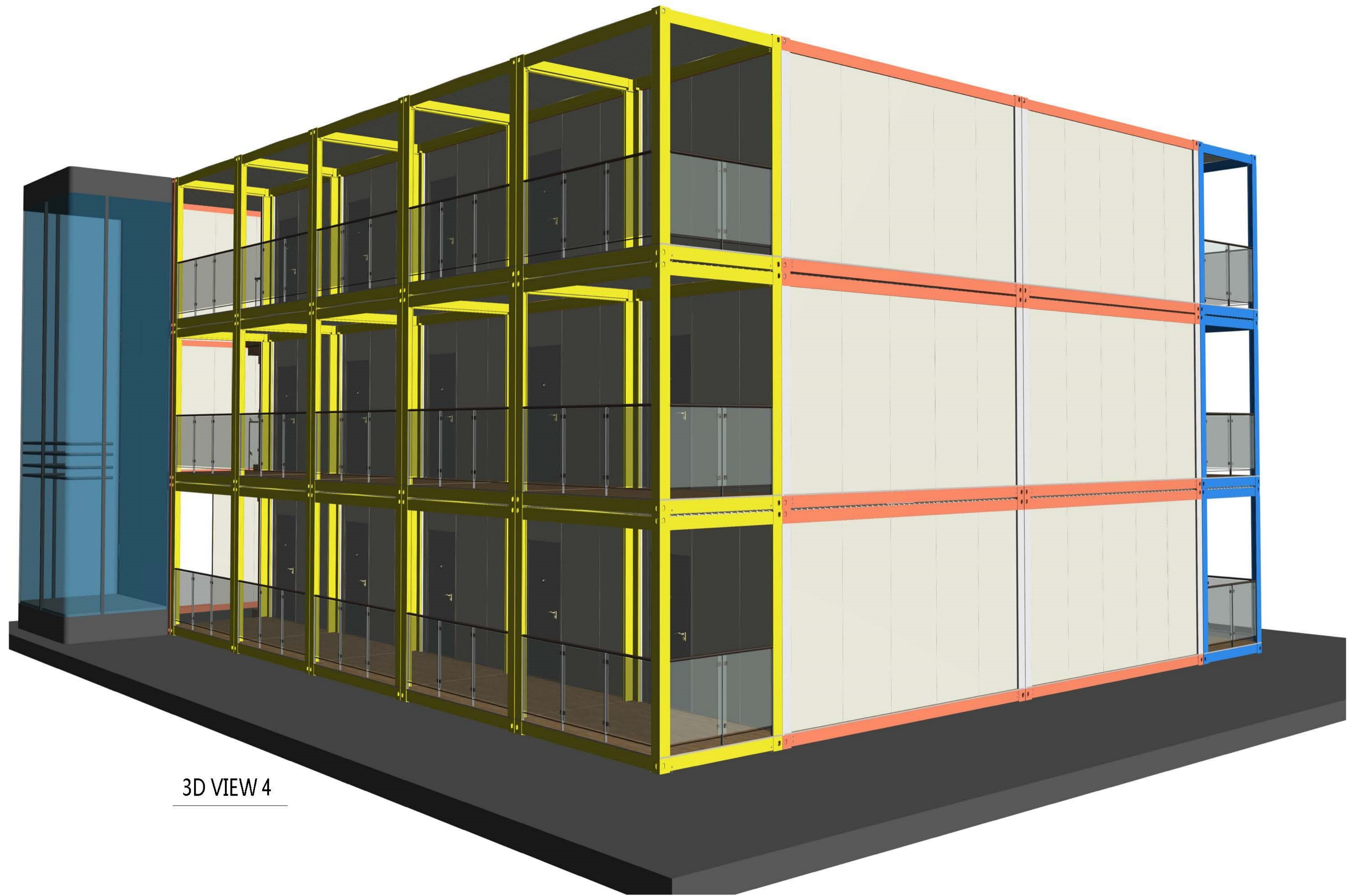




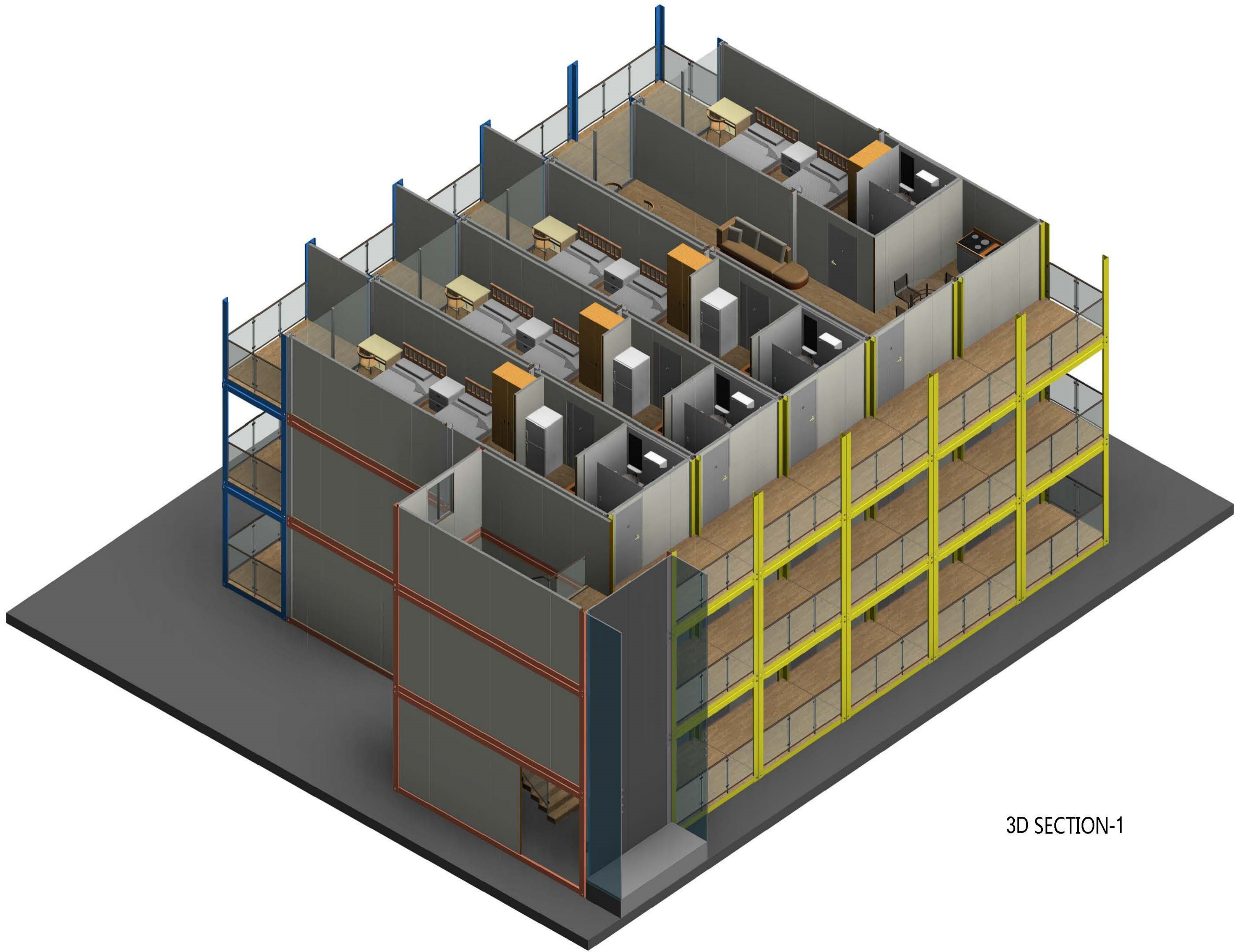
3D VIEW 2



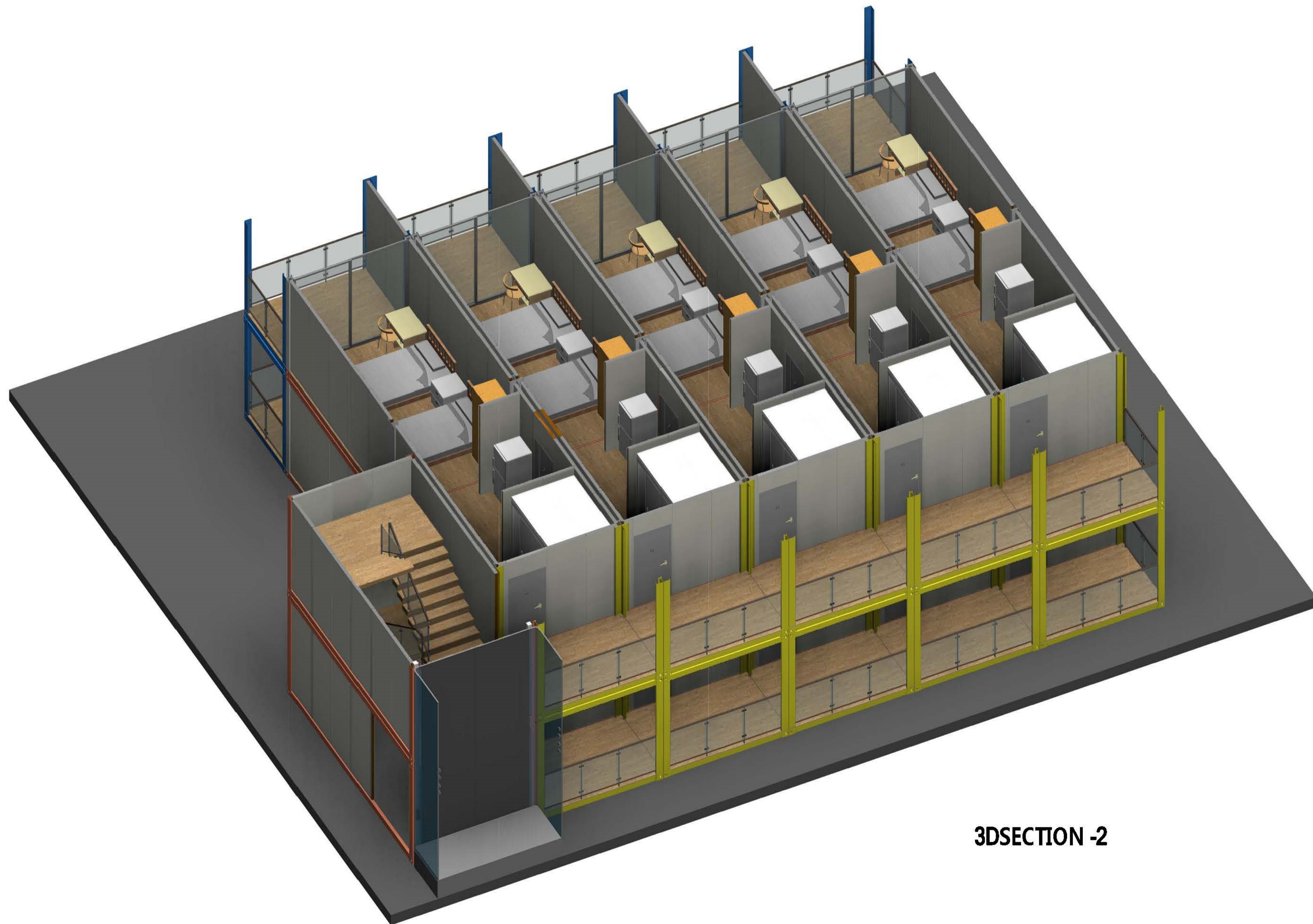
3D VIEW 3



3D VIEW 4



3D SECTION-1



**3DSECTION -2**