



Brief Introduce

- ◆ OEM/ODM manufacturer with 15 years experience in water treatment machine
- ◆ 40,000 square meter of new factory is under construction
- ◆ CE, ISO9001:2008, ISO14001, ISO13485 Certificated
- ◆ More than 30,000 customers
- ◆ Equipment is exported to more than 40 countries

Proposal & Quotation

1000L/H Mobile Trailer Mounted UF+RO Plant

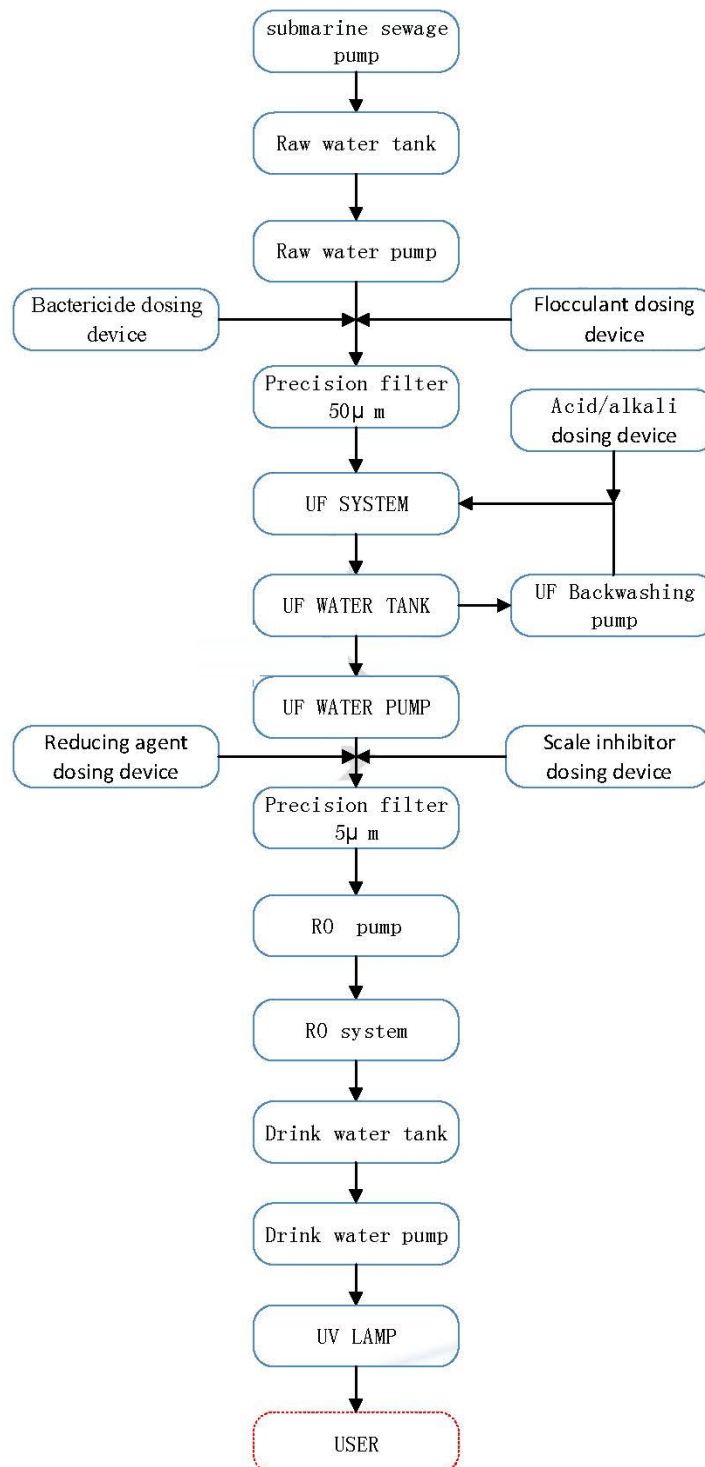
NO.	Name	Specification
1	Model	Molro-1000ufm
2	Product water flow	$\geq 1000\text{L/H @}25^{\circ}\text{C}$
3	Product water quality	Desalination rate $>99\%$
4	Feed water	TDS $<2000\text{ppm}$
5	Recovery	$>60\%$
6	Control	Automatic Control with PLC
7	Qty.	5 sets
8	Dimension	Installed on a trailer
9	Unit price (\$)	<u>USD 19,290 .00/SET</u>
	Total amount for 5 sets machines (\$)	<u>USD 96,450.00</u>

Note:

1. Price terms: FOB Chongqing, China
2. Payment terms: 50% T/T Prepayment, 50% T/T EX-WORK
3. Transportation: by sea 4. Quotation validity: 30 days
5. Production cycle: 40 working days
6. Warranty: 12 months for whole machine, excluding the consumables

1tph Portable Water System Technical Proposal

1. Process flow diagram



2. Technical specifications

NO.	Name	specification	Remark
1	Worktime	24h/day	
2	Control	Automatic and manual	
3	Power	380V/220V,50Hz,6.5kw	
4	System structure	trailer system	
5	submarine sewage pump	By mol	
6	Producing water tank	By mol	
7	generator	By mol	
8	RO system	Q=1t/h	1set
9	Size of the trailer	Approximately 4.5m*2m*2.3m	
10	Produced water quality	Drink water	

3. Main configuration list

NO.	Name	Specification	Qty	Brand
1	Pretreatment			
1.1	Submersible pump			
	submersible pump	2T/H, 10-20m, 0.75kw	1set	MOL
	water hose		1set	MOL
	cable		1set	MOL
1.2	Raw water tank			
	UF water tank	250L,PE	1set	Advance
	Level switch		1pcs	SPES
	Ball valve	DN15, UPVC	2pcs	YAOWEI
1.3	Raw water pump			
	water pump	CHM2-4, 2.2T/H, 29m, 0.55KW	1set	CNP
	manual ball valve	DN20, UPVC	2pcs	YAOWEI
	check valve	DN20, UPVC	1pcs	YAOWEI
1.4	Bactericide dosing device			
	Dosing pump	LB02, 0.9L/H	1set	Pulsafeeder
	Dosing water tank	30L,PE	1set	Advance
	Level switch		1pcs	SPES
1.5	Flocculant dosing device			
	Dosing pump	LB02, 0.9L/H	1set	Pulsafeeder

Molecular Water System

	Dosing water tank	30L,PE	1set	Advance
	Level switch		1pcs	SPES
1.6	Precision filter			
	Precision filter	MOLJM5-30	1set	Mol
	Cartridge element	30", 50 μ m	5pcs	Xinjing
	Pressure gauge	1.0MPa	1pcs	BLD
1.7	UF system (Q=2T/H)			
	UF membrane	UF1IB160,20 m ² /pcs,PS	2pcs	MOTIAN
	solenoid valve	DN20, SS304, inlet	1pcs	YuYAO No.4
	solenoid valve	DN15, SS304, reverse flushing	1pcs	YuYAO No.4
	ball valve	DN20, UPVC, reject water	1pcs	Yaowei
	solenoid valve	DN20, SS304, product water	1pcs	YuYAO No.4
	solenoid valve	DN15, SS304, backwash outlet-up	1pcs	YuYAO No.4
	solenoid valve	DN15, SS304, backwash outlet-down	1pcs	YuYAO No.4
	rotor flow meter	LZS-15, reject water	1pcs	Kingtai
	rotor flow meter	LZS-25, product water	1pcs	Kingtai
	Pressure gauge	0-1.0Mpa	2pcs	BLD
	UF skid		1set	MOL
1.8	UF water tank			
	UF water tank	250L,PE	1set	Advance
	Level switch		1pcs	SPES
	Ball valve	DN15, UPVC	2pcs	YAOWEI
1.9	UF backwashing system			
	backwashing water pump			
	water pump	Share with uf water pump		
	manual ball valve	DN20, UPVC	2pcs	YAOWEI
	check valve	DN20, UPVC	1pcs	YAOWEI
	Acid/alkali dosing device			
	Dosing pump	LB02, 0.9L/H	2set	Pulsafeeder
	Dosing water tank	30L,PE	2set	Advance
	Level switch		2pcs	SPES
2	RO system			
2.1	UF water pump			
	water pump	CHM2-4, 2T/H, 29m, 0.55KW	1set	CNP
	manual ball valve	DN20, UPVC	2pcs	YAOWEI
	check valve	DN20, UPVC	1pcs	YAOWEI
2.2	Reducing agent dosing device			
	Dosing pump	LB02, 0.9L/H	1set	Pulsafeeder

Molecular Water System

	Dosing water tank	30L,PE	1set	Advance
	Level switch		1pcs	SPES
2.3	Scale inhibitor dosing device			
	Dosing pump	LB02, 0.9L/H	1set	Pulsafeeder
	Dosing water tank	30L,PE	1set	Advance
	Level switch		1pcs	SPES
2.4	Precision filter			
	Precision filter	MOLJM5-20	1set	Mol
	Cartridge element	20", 5μm	5pcs	Xinjing
	Pressure gauge	1.0MPa	1pcs	BLD
2.5	RO high pump			
	water pump	CDM1-27, 2T/H, 106m, 1.5kw	1set	CNP
	check valve	DN20, UPVC	1pcs	yaowei
	ball valve	DN20, UPVC	1pcs	yaowei
	Pressure switch	FNC-K6	1pcs	Fannico
2.6	RO System			
	RO membrane	Lc Le-4040,PA,8.7 m ²	4pcs	DOW
	RO housing	4040-1-150PSI,SUS304	4pcs	MOL
	solenoid valve	DN15,SS304, flush	1pcs	YuYAO No.4
	Stop valve	DN15, SS304,reject water	1pcs	longze
	Concentrate Flow meter	LZS-15, reject water	1pcs	Kingtai
	Permeate Flow meter	LZS-15, product water	1pcs	Kingtai
	Permeate Conductivity meter	4-20mA	1pcs	Honest
	Pressure gauge	2.5Mpa	3pcs	BLD
	sampling valve	DN8, SS304	2pcs	Yaowei
	RO skid		1set	MOL
3	Drink water part			
3.1	Drink water tank			
	Drink water tank	V=1000L,1m×1m×1m, SS304	1set	MOL
	Level switch		1pcs	SPES
	Ball valve	DN15, UPVC	2pcs	YAOWEI
3.2	Drink water pump			
	water pump	CHM2-4, 2T/H, 29m, 0.55KW	1set	CNP
	manual ball valve	DN20, UPVC	2pcs	YAOWEI
	check valve	DN20, UPVC	1pcs	YAOWEI
3.3	UV Lamp			
	UV Lamp	Q=2T/H	1pcs	SHIDE
	manual ball valve	DN20, UPVC	1pcs	YAOWEI
4	Pipe			
	pipe	UPVC	1set	yaowei
5	Control system			
	Electrical element		1set	CHNT

Molecular Water System

	switch electric panel		1set	CHNT
	Warning Alarm device		1set	MOL
	control cabinet		1set	MOL
6	Others			
	Generator	9kw	1set	MOL
	Trailer		1set	MOL

4. Similar Trailer Water System Pictures for United Nation



Molecular Water System

