



**EVERYTHING
under THE SUN**

EXCELLENT PREFABRICATED HOUSING AND STEEL STRUCTURE SOLUTION SUPPLIER AND SERVICER

Focus on "Quality&Service", offer one-stop service!



WORKSHOP





AFTER-SALE SERVICE





EVERYTHING UNDER THE SUN

QUOTATION SHEET

Date: October ,13 th ,2018

NO.	ITEM	QTY(UNIT)	SQM(M2)	UNIT PRICE	TOTAL PRICE
HOUSE					
1	Dormitory	3	235	\$35,825.00	\$107,475.00
2	Office	1	504	\$67,288.00	\$67,288.00
				EXW	\$174,763.00
INLAND COST					
	40'HC	9		\$950.00	\$8,550.00
	From factory to china qingdao port			FOB	\$183,313.00
Remarks:					
1.The price above only include the items listed above.The valid day of quotation is 15 days.					
2.Payment terms: 50% T/T deposit,balance payment should be payable before container loading.					
3.Delivery: 30 days after receiving deposit and signature of the drawings and Sales confirmation.					
4.Package: Standard protective export packing.If buyer needs special packing,charge will be additional.					
5.Transportation:					
If in FOB terms,supplier arrange transportation to China port;					
If in CNF/CFR terms, supplier arrange transportation to the local foreign port as per final actual shipping cost.					
6.Installation is not included on above price.					
We will offer installation step-by-step instruction and drawings,pictures,or videos for reference.					
Also can send technician,but all the cost shall be paid by the buyer including technician salary USD150 per day.					

QUOTATION SHEET

NO.	HY-QS-181013	DATE	October 13th,2018
PROJECT	Steel structure dormitory		
Specification: L=23.5m W=10 m Ceiling=3.5 m Roof 5.5 m			
Item	Description	Qty	Unit
Steel frame	Beam/ HN200*100HN250*125, square tube/ 120x5mm	235	m2
Exterior Wall	2440*610*60mm, Calcium silicate plate/ cement foam panel / 5mm thick cement	275	m2
Interior Wall	2440*610*60mm, Calcium silicate plate/ cement foam panel / 5mm thick cement	113	m2
Roof	2440*610*60mm, Calcium silicate plate/ cement foam panel / 5mm thick cement	245	m2
	asphalt shingles/	245	m2
Door	Inside door(MDF door) 800*2000mm	12	pcs
	bathroom door/PVC (800mm x 2000mm (water proof)	6	pcs
Windows	PVC sliding window /PVC 950(W)*1000mm(H)	16	pcs
	PVC sliding window /PVC 500(W)*500mm(H)	6	pcs
Accessories	kinds of necessary screws, U type clipsealant, Special binder /	235	m2
Ceiling	PVC strip ceiling/PVC	235	m2
Floor	ceramic tile/ 800x800mm	235	m2
Drain system	drain pipes ,gutter/	17	m

Remarks:					
1.The price above is exw Price.					
2.The price above only include the items listed above.The valid day of quotation is 15 days.					
3.The price above includes only materials,not including any labor cost on site nor engineer local guidance cost.					
4.Payment terms: 50% T/T deposit,balance payment should be payable before container loading.					
5.Delivery: 15 days after receiving deposit and signature of the drawings and Sales confirmation.					
6.Package: Standard protective export packing.If buyer needs special packing,charge will be additional.					
7.Transportation:					
If in FOB terms,supplier arrange transportation to China port;					
If in CNF/CIF terms, supplier arrange transportation to the local foreign port as per final actual shipping cost.					
8.Installation is not included on above price.					
We will offer installation step-by-step instruction and drawings,pictures,or videos for reference.					
Also can send technician,but all the cost shall be paid by the buyer including technician salary USD150 per day.					



QUOTATION SHEET

NO.	HY-QS-181013	DATE	October 13th,2018
PROJECT	Steel structure office		
Specification: L =42m W=12 m Ceiling =3.5 m Roof 5.5 m			
Item	Description	Qty	Unit
Steel frame	Beam HN200*100;HN250*125, square tube 120x5mm	504	m2
Exterior Wall	2440*610*60mm, Calcium silicate plate/ cement foam panel / 5mm thick cement	426	m2
Interior Wall	2440*610*60mm, Calcium silicate plate/ cement foam panel / 5mm thick cement	142	m2
Roof	2440*610*60mm, Calcium silicate plate/ cement foam panel / 5mm thick cement	521	m2
	asphalt shingles	521	m2
Door	Main door/ broken-bridge aluminum door / 1500mm*2000mm	1	pcs
	steel security door	2	pcs
	Inside door(MDF door)	10	pcs
	bathroom door/PVC / 800mm x 2000mm (water proof)	4	pcs
Windows	PVC sliding window /PVC 950(W)*1000mm(H)	17	pcs
	PVC sliding window /PVC 500(W)*500mm(H)	3	pcs
Accessories	kinds of necessary screws, U type clipsealant, Special binder	504	m2

Ceiling	PVC strip ceiling/PVC	504	m ²	
Floor	ceramic tile 800x800mm	504	m ²	
Drain system	drain pipes ,gutter	49	m	
Remarks:				
1.The price above is exw Price.				
2.The price above only include the items listed above.The valid day of quotation is 15 days.				
3.The price above includes only materials,not including any labor cost on site nor engineer local guidance cost.				
4.Payment terms: 50% T/T deposit,balance payment should be payable before container loading.				
5.Delivery: 15 days after receiving deposit and signature of the drawings and Sales confirmation.				
6.Package: Standard protective export packing.If buyer needs special packing,charge will be additional.				
7.Transportation:				
If in FOB terms,supplier arrange transportation to China port;				
If in CNF/CF terms, supplier arrange transportation to the local foreign port as per final actual shipping cost.				
8.Installation is not included on above price.				
We will offer installation step-by-step instruction and drawings,pictures,or videos for reference.				
Also can send technician,but all the cost shall be paid by the buyer including technician salary USD150 per day.				





ALBANIA



ARAB



AUSTRALIA



BERMUDA



GERMANY



MALDIVES



SOUTH AFRICA



PORTUGAL



EL SALVADOR



THAILAND



URUGUAY



BOX HOUSING

Australian code compliant housing manufacture



ASIAN DRAGON light steel house

Introduction:

The company is the leader of China's light steel construction industry, always promotes and popularizes green and energy-saving light steel structure building. Our company is a professional company integrating designing, production, construction and marketing. Our products include light steel villas, prefabricated house, container house, large workshops and warehouses.

products are exported to Australia, Newzealand, the USA, Canada, Angola, Malaysia, Thailand, Ethiopia, Nigeria, South Africa, Somalia, Morocco, Russia, Kyrgyzstan, United Arab Emirates, Saudi Arabia, Iraq, Iran, Maldives, Vietnam, Malaysia, Ecuador, Peru and other more than 80 countries and regions around the world.

The company currently has two production bases and one R&D center, with a plant area of over 30,000 square meters and more than 600 employees. It has a fully automatic spraying production line, a fully automatic light steel frame production line and two color steel sandwich panel production lines, with an annual production capacity of 1 million square meters of light steel houses. Our company has also passed the ISO9001 enterprise management system certification



Development of light steel frame houses around world

many countries such as the United States, Japan, the United Kingdom, and Australia are actively promoting the application and development of low- and medium-rise light steel structure houses.

Light steel house Advantages:

1. Energy saving and Environmental friendly

Thermal insulation and keep warm, sound insulation, fire protection, moisture resistance

2. Resistance to earth quake to more than 9 magtitude and can resist to 14 grades Typhoon

3. Quick installation on job site

Less time and only 6 labor can finish one 150 square meter house within 1 month

4. Less weight for the building material

Easy for building the house with only 1/5 of the traditional concrete house weight

5. Saving more space for living

The light steel frame wall thickness is only 120mm, this given more than 8-15% space for people.





How to make a light steel house:



→ Tell us the land area size

→ Decide which design and material

→ make the plan drawing to confirm

→ deposit, production, packing, balance, shipping

→ Set up on the job site

BUILD YOUR DREAM

General plan for a town



1:2500

Project introduction

Location: Brisbane (Australia) ;

Item name: LOT 23;

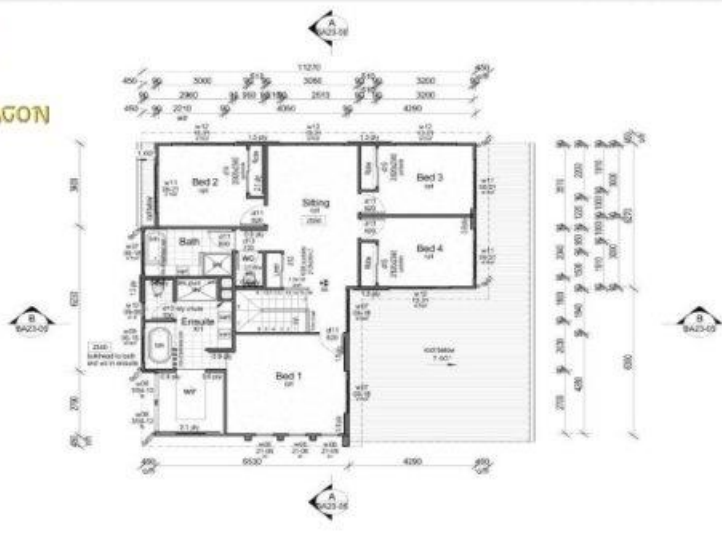
Total area: 286.61m²;

Lead time: 30 days;

Time for set up on job site: 40 days;



Plan and elevation drawing:



Legend

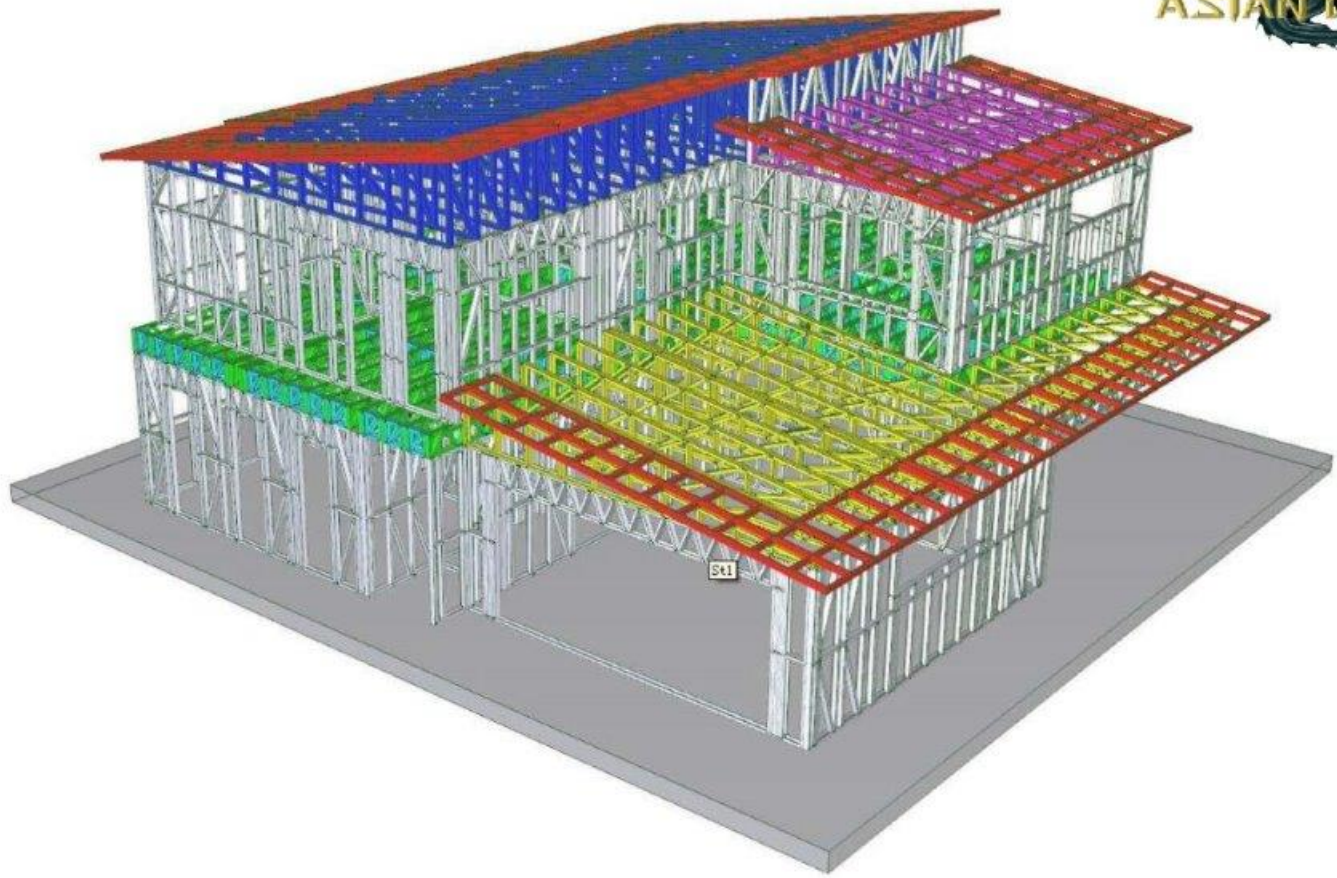
- 1000: 1000mm
- 2000: 2000mm
- 3000: 3000mm
- 4000: 4000mm
- 5000: 5000mm
- 6000: 6000mm
- 7000: 7000mm
- 8000: 8000mm
- 9000: 9000mm
- 10000: 10000mm
- 11000: 11000mm
- 12000: 12000mm
- 13000: 13000mm
- 14000: 14000mm
- 15000: 15000mm
- 16000: 16000mm
- 17000: 17000mm
- 18000: 18000mm
- 19000: 19000mm
- 20000: 20000mm



Effect drawing:



Build model:



Light steel frame production line:



Building code: Australia standard;

Steel thickness: 0.8 or 1.0mm

Material: Galvanized Alu G550

Foundation (Solved by customer easily) :



Light steel frame set up:





DANGER
KEEP OUT
AUTHORIZED
PERSONNEL ONLY



Do the Electricity and water system



**Breathing
paper layer**



Quality Steel Frame Features

DANGER
KEEP OUT
AUTHORIZED
PERSONNEL ONLY

es
SOLUTION DESIGN

Fiber cement b

Interior deco:





Finished interior:







portable shower



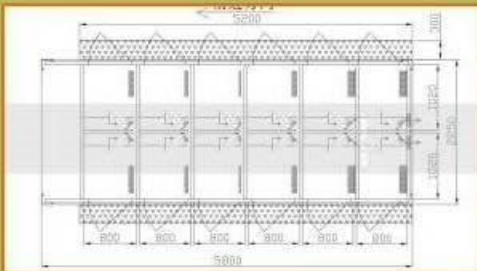
Size: L5800*W2250*H2500mm

Structure : steel structure + sandwich panel + insulation

Configurations : 6pcs showers, 1pcs basin, 6pcs doors, 1pcs up-turning board, 1pcs sewage water tank ,electricity and water plumbing ,finished decorations

Transport : 1*40ft HQ can load 2 units

FOB price : 15200 USD



portable toilet



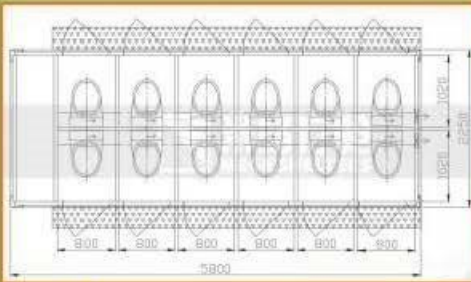
Size: L5800*W2250*H2500mm

Structure : steel structure + sandwich panel + insulation

Configurations : 6pcs toilets, 1pcs basin, 6pcs doors, 1pcs up-turning board, 1pcs sewage water tank, electricity and water plumbing ,finished decorations

Transport : 1*40ft HQ can load 2 units

FOB price : 15200 USD



Singapore container toilet



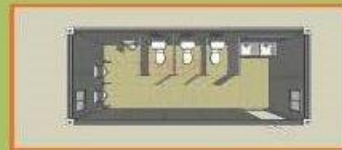
Size: L6058*W2438*H2896mm

Structure : Modified 20ft HQ shipping container ,
50mm fiberglass sandwich panel decoration and
insulation

Configurations : 3 toilets, 3 urinals , 2 wash
basin , electricity and water plumbing

Transport : Shipped as 20ft ISO HQ shipping

FOB price : 15500 USD



Trailer toilet



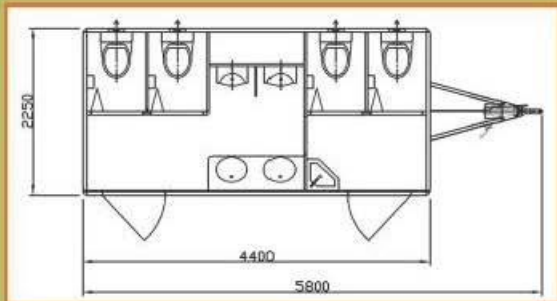
Size: L5800*W2250*H2500mm

Structure : trailer chassis with brake , steel frame ,
50mm fiberglass sandwich panel with insulation

Configurations : 4 toilets , 2 urinals , 3 wash basin , 1
650L waste tank , 600L water tank , finished electricity
and water plumbing system , ladder

Transport : 1*40ft HQ and load 2 units

FOB price : 22000 USD



Expandable trailer bathroom



Open size: L4800*W3850*H2800mm

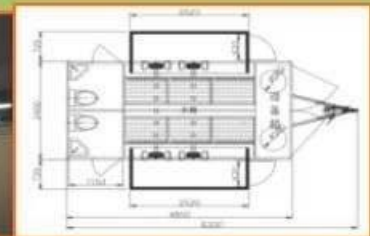
Close size: L4800*W2400*H2800mm

Structure : trailer chassis with brake , steel frame ,
50mm fiberglass sandwich panel with insulation

Configurations : 2 toilets , 4 showers , 2 wash basin ,
water tank , water heater system , finished electricity
and water plumbing system , ladder , expandable
equipment

Transport : Designed to 1*40ft HQ and load 2 units

FOB price : 33500 USD



container hotel



Size: L2667 x W2250 x H2500mm

Structure : steel structure + sandwich panel + insulation

Configurations : Air conditioner ,water heater ,bed ,cabinet and shelf , wardrobe , bathroom fully fixtures , electrical and wash plumbing

Transport : 1*40ft HQ load 4 units

FOB price : 2200 USD



container house



Size: L6058*W2438*H2591mm

Structure : Modified 20ft ISO shipping container ,
50mm fiberglass sandwich panel decoration

Configurations : Roof platform , stair ,deck ,rain
canopy ,air conditioner , wardrobe , table , bed ,
water heater ,bathroom fixtures and electrical

Transport : Shipped as 20ft ISO shipping
container , roof platform ,stair ,decks and canopy
will load inside extra container for shipping

FOB price : 22500 USD



tent hotel



Container Size: L5800xW4600xH2500mm

Tent size : L7400xW8400xH4800mm

Outside balcony size : 5800*2000mm

Structure : steel structure + fiberglass sandwich panel + insulation +decorations

Configurations : balcony deck , steel supporters , roof tent , water heater , bathroom fully fixtures, electrical and water plumbing

Transport : 1*40ft HQ load 1 unit

FOB price : **28,900USD**



Jordan container house



Size: L6058 x W2438 x H2591mm

Structure : modified ISO 20ft shipping container,
sandwich panel decoration and insulation

Configurations : kitchen , bathroom fully fixtures
wardrobe , electrical and water plumbing system

Transport : Shipped as ISO 20ft GP shipping container

FOB price : **11000 USD**



Well container house



Size: L6058 x W2438 x H2591mm

Structure : modified ISO 20ft shipping container,
sandwich panel decoration and insulation

Configurations : Bathroom fully fixtures, wardrobe, bed,
computer desk and chair, electrical and water plumbing
system

Transport : Shipped as ISO 20ft GP shipping container

FOB price : 15500 USD



Germany camp container house



Size: L12192*W2438*H2896mm

Structure : Modified 40ft HQ shipping container ,
100mm thick rock wool sandwich panel decoration
and insulation for wall ,roof and floor

Configurations : kitchen , 4 pieces cabinets ,
bathroom fully fixtures, electrical and water plumbing

Transport : Shipped as 40ft ISO shipping container

FOB price : 24000 USD



700mm folding container



Opening size: L5800* W5184* H2500mm

Closing size :L5800*W700*H2500mm

Structure : steel structure + sandwich panel + insulation , 3 people 10 minutes can opening without crane

Configurations : electricity ,gas strut ,lift wheels ,4 windows ,2 doors

Transport : 1*40ft HQ load 6 units

9,000USD



Safari folding house



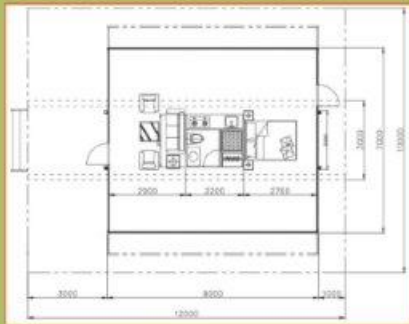
Size: L11800*W2200*H2500mm

Structure : steel structure + sandwich panel + insulation

Configurations :2pcs door, 4pcs windows, electricity system, staircase, platforms. can added kitchen , bathroom and bedroom

Transport : 1*40ft HQ can load 1 units

FOB price : **22000 USD**



Australia store



Size: L6058 x W2438 x H2896mm

Structure : Modified ISO 20ft HQ shipping container; sandwich panel decoration and insulation.

Configurations : 5.2M front counter with guide rail, 5.8M back counter , electrical

Transport : Shipped as ISO 20ft HQ shipping container

FOB price : 25000 USD



Mobile kitchen



Size: L6058 x W2438 x H2591mm

Structure: Modified ISO 20ft shipping container, sandwich panel decoration and insulation.

Configurations: automatic awning, hydraulic system, electrical and water plumbing system

Transport: Shipped as ISO 20ft GP shipping container

FOB price: 22000 USD



Container swimming pool



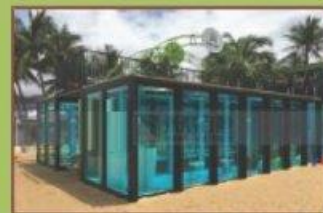
Size: L11800*W2200*H2400mm

Structure : steel structure + corrugated steel plate + 22mm strong glass

Configurations : filter system , wave making system , shower spray , ladder ,electrical and water plumbing, recycle system

Transport : 1*40ft HQ load 1 unit

FOB price : **28,000USD**



Container clinic



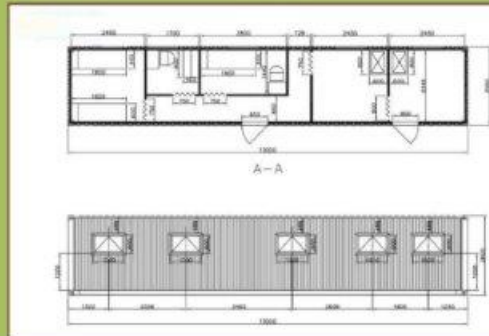
Size: L13000*W3000*H2800mm

Structure : Modified oversized shipping container ,
50mm thick IEPS sandwich panel insulation and
aluminium plastic board for wall ,roof .

Configurations :Medical bed and chair , wash basin ,
oxygen tube , air conditioner ,electrical and water
plumbing

Transport : Shipped by flat rack container

FOB price : **28,000USD**



Jazzi Bathtub



Size: L2060×W2060×H780mm

Structure : Acrylic/acrylic+Control system

Configurations : Each SPA are equipped with the most advanced Balboa (imports) controller, humanized design makes the operation more convenient easyjet, 3.5 "high resolution color digital LED display

Transport : 1*40ft HQ load 5 units

FOB price : 8800 USD



Shell RV



Size: L5600*W2250*H3500mm

Structure : double axes with brake , steel frame , 50mm fiberglass sandwich panel with insulation

Configurations : air conditioner , kitchen ,sofa , table ,wardrobe , book shelves ,lockers ,stair , bed ,10L water heater ,canopy ,electrical

Transport : 1*40ft top opening container load 2 units

FOB price : 22000 USD

