

Introduction of Prefab Housing Placement Project



1. Promote housing industrialization
2. Transform the production mode in building
3. Establish a green and ecological city
4. Build an lovable enviroment for living and working

◇ Prefabricated House



The basic conception and **the industrial chain** of integrated buildings——adopt new green energy-saving building materials(includes structural and decorative materials), “dry operation” as the main method; modern method for construction with customized service, standardized product, industrialized fabrication, assembling construction and sterilized product; this turn-key project provide bag check service.

◆ Product Show



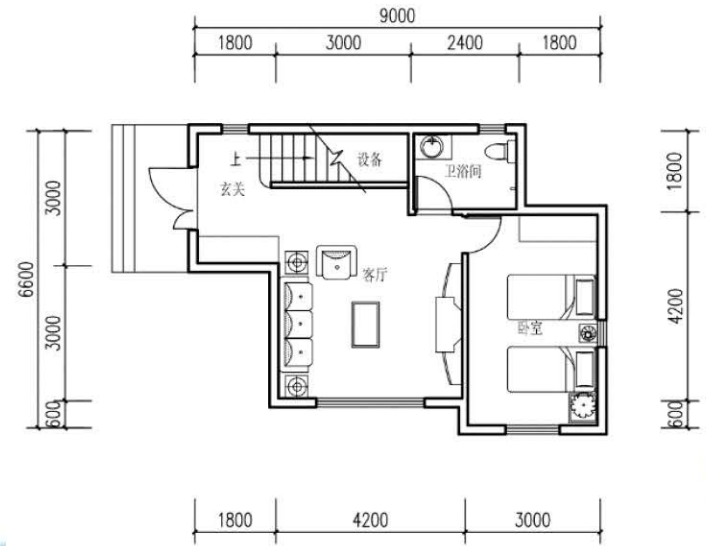
◇ Product Appearance



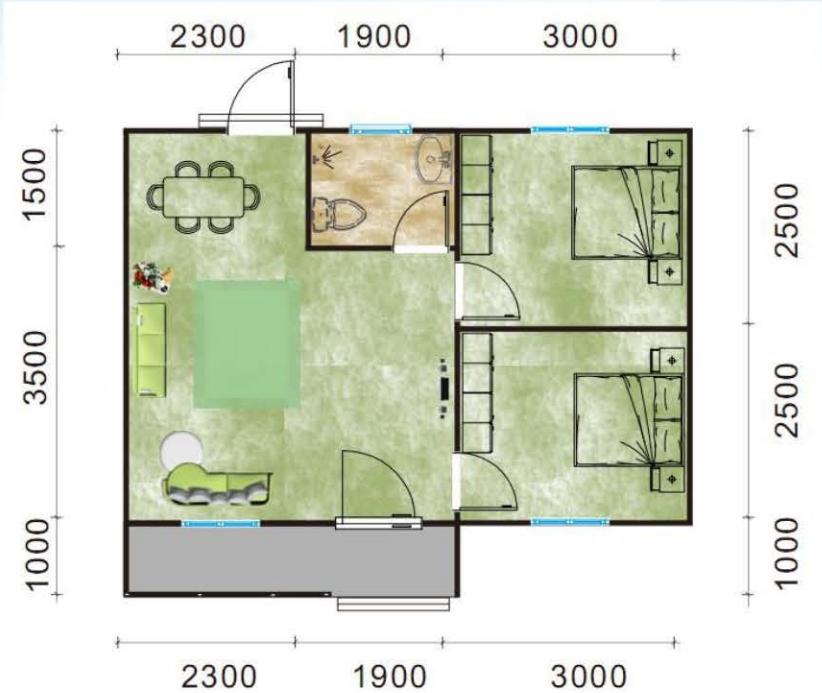
◇ We do Detail, Parameters



Two layer design case



◇ Design Layout Options (36)



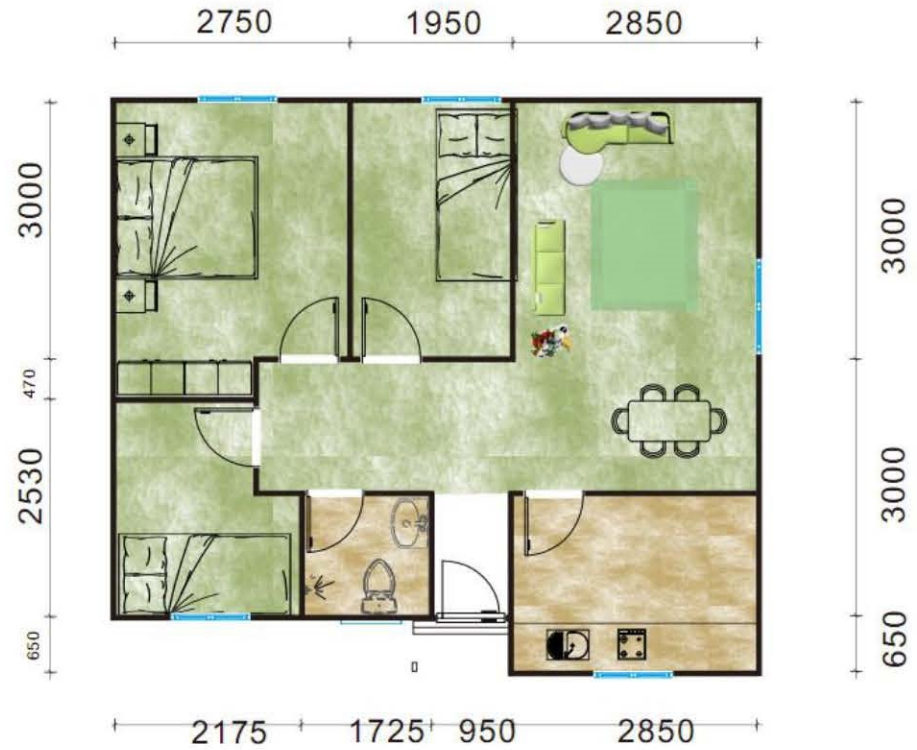
Item : HK-V36
Area : 36M2
Size : 7200*5000mm
Bedroom : 2
WashRoom: 1

◇ Design Layout Options (45)



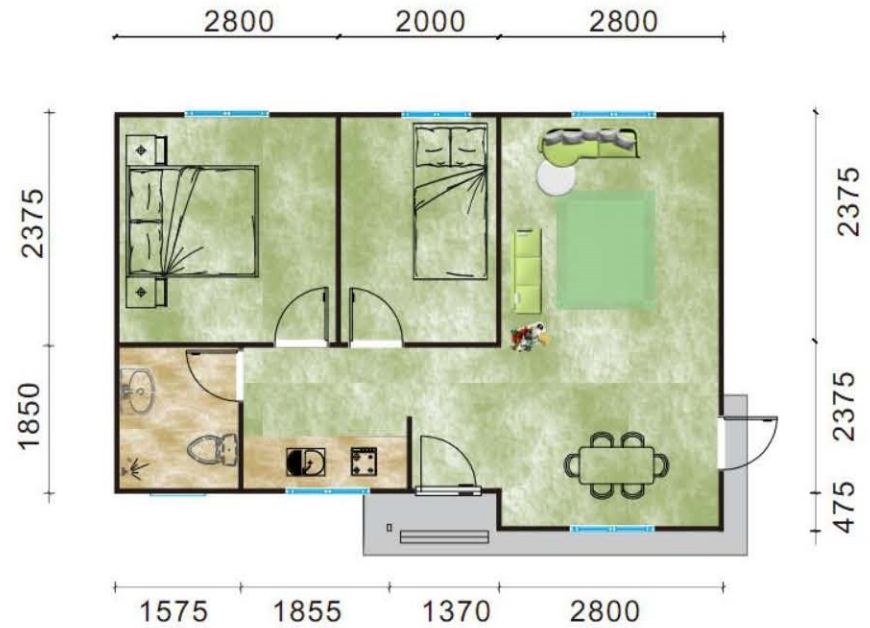
Item : HK-V50
Area : 45M2
Size : 7500*6650mm
Bedroom : 2
WashRoom: 1

◇ Design Layout Options (50)



Item : HK-V45
Area : 45M2
Size : 7500*5500mm
Bedroom : 2
WashRoom: 1

◇ Design Layout Options (40)



Item : HK-V40
Area : 40M2
Size : 7600*5200mm
Bedroom : 2
WashRoom: 1

◇ Design Layout Options (60)



Item : HK-V60
Area : 60M2
Size : 9500*7200mm
Bedroom : 2
WashRoom: 1