

RESIDENTIAL HOUSING

# ECONOMIC FLATPACK CONTAINER HOUSE

# 1



Economic Flatpack Container House is a kind of modular house, could be combined into multiple and multilayer as customer requirement.



## Standard Specification

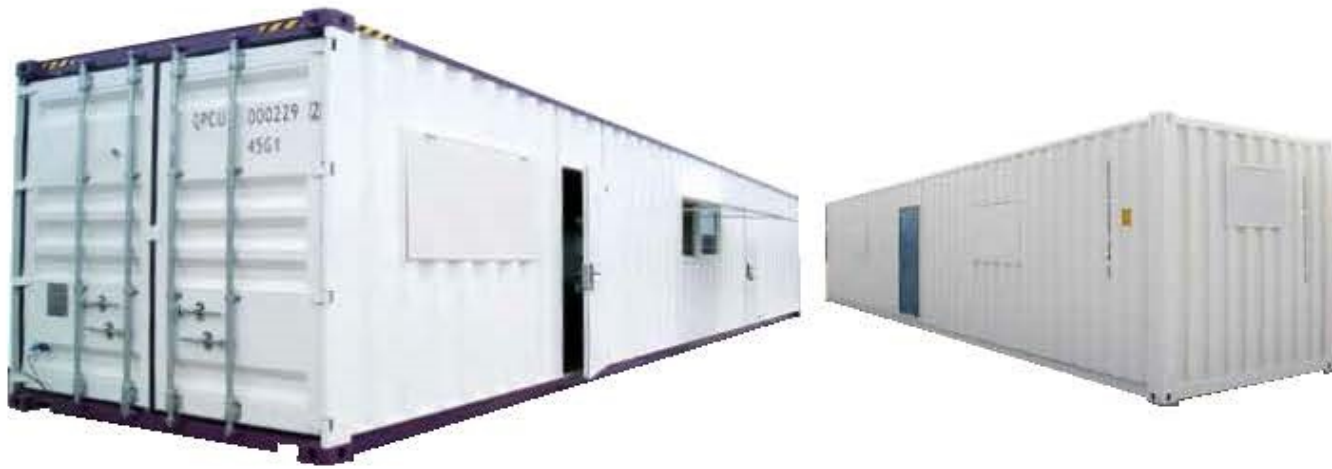
Size	20ft' or Customized
Main Frame	Light steel structure
Insulation	EPS/ PU/ Glasswool/ Rockwool sandwich panel
Floor	Plywood/ Cement board with PVC /Wooden flooring
Door	Sandwich panel door/ Steel Wooden door/ Steel door
Window	Plastic steel window/ Aluminium alloy window/ Safety window and etc.



RESIDENTIAL HOUSING

# SHIPPING CONTAINER HOUSE

# 2



## Standard Specification

Size	20ft' and 40ft'
Main Frame	Shipping Container
Internal Wall	Sandwich panel/ Light steel keel system
Floor	Shipping container floor/ Cement floor with PVC/ Wooden flooring
Door	Wooden door/ Steel Door
Window	Plastic steel window/ Aluminium alloy window/ Safety window and ect.





RESIDENTIAL HOUSING

# MODULAR HOTEL

# 3





WAREHOUSE

# INTEGRATED FOLDING STORAGE CONTAINER

# 1

Integrated folding storage container is widely used for house moving, family storage, emergency situation, warehouse and so on. It looks like a kind of foldable container which is made of steel materials and galvanized steel sheet. Double steel doors are convenient.



Standard Specification	
Size	10ft', 12ft', 16ft', 19ft'
Surface	Painted or powder Coated
Floor	Plywood
Wall	Steel Frame with galvanized Steel Sheet
Door	Steel double door
Roof	Corrugated or Flat Steel Sheet



### Advantage:

1. Solid and durable.
2. Foldable structure for quick and efficient transportation or storage.
3. Low cost.
4. Can be installed and uninstalled quickly without damage.



WAREHOUSE

# SPLIT FOLDING STORAGE CONTAINER

# 2



## Standard Specification

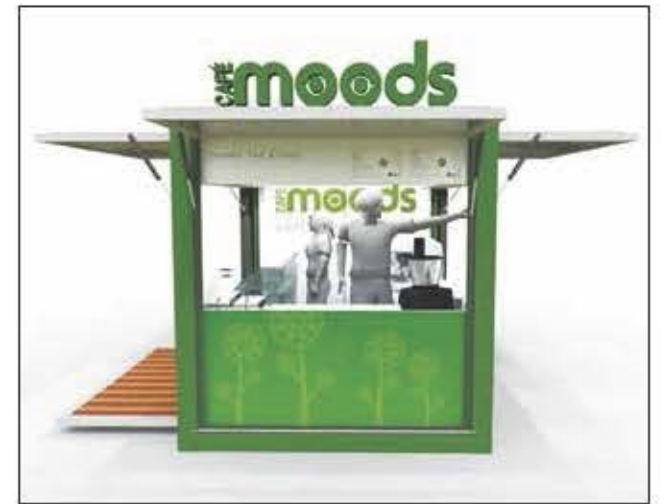
Size	10ft' 12ft' 16ft' 19ft'
Surface	Painted or powder Coated
Floor	Plywood or Riffled Floor
Wall	Steel Frame with galvanized steel sheet/ sandwich panel
Door	Steel double door
Roof	Corrugated or Flat Steel Sheet

Split folding storage container is foldable, man-portable, low-cost and can be quickly installed or uninstalled without damage. They are efficient used for goods transportation or storage.

EXHIBITION HALL

# HYDRAULIC SHOWROOM

# 1



## Standard Specification

Size	20ft' or 40ft'
Main Frame	Shipping Container
Power system	Hydraulic system
Floor & Wing	Aluminium checkered plates
Ceiling	Aluminium plate
Other accessories	LED lights, electric box, switch, socket, awning.



# EQUIPMENT CONTAINER

1



## Standard Specification

Size	20ft', 40ft' or customized
Main Frame	Light Steel Structure or Shipping Container Frame
Wall	Steel Frame with corrugated steel Sheet
Floor	Plywood, cement, ruffled plate
Door	Steel double door
Roof	Corrugated steel Sheet



# INSULATION MATERIAL

## 1

Polyurethane Product Specifications

项 目 Item	指 标 Norm	分 类 Classification	类 型 Type			
			A	B	A	B
密度 Density(kg/m <sup>3</sup> )		不小于	30	30	30	30
压缩性能 屈服点时或形变 10% 时的压缩应力   KPa   Compression Performance: compressive stress at the yield point or in the case of 10% of deformation		不小于	100	100	100	150
导热系数 Thermal Conductivity(W/m·K)		不大于	0.022	0.027	0.022	0.027
尺寸稳定性 Dimensional Stability(70°C、48h)(%)		不大于	5	5	5	5
水蒸气透湿系数 Water Vapor Permeability (23±2)°C (0% 至 85%RH)(ng/Pa·m·s)		不大于		6.5		6.5
吸水率 Absorption(%)		不大于		4		4
燃烧性 Flammability	垂直燃烧法 Vertical Burning	平均燃烧时间 Average Burning Time(s)	不大于	30		30
		平均燃烧高度 Average Height of Burning (mm)	不大于	250		250
	水平燃烧法 Horizontal Burning	平均燃烧时间 Average Burning Time(s)	不大于	90		90
		平均燃烧高度 Average Height of Burning (mm)	不大于	50		50

Specifications of EPS Product

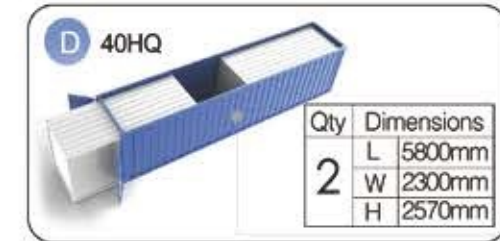
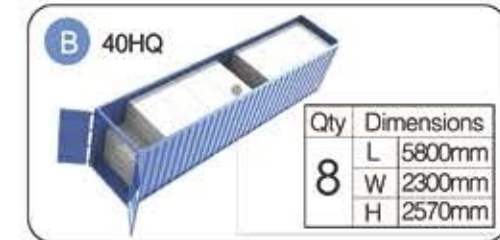
项 目 Item	单 位 Unit	性能指标 Performance Specification				
			I	II	III	
表面密度 Apparent Density	不小于	kg/m <sup>2</sup>	15	20	30	
压缩强度   即在 10% 形变下的压缩应力   Compressive Strength (Compressive Stress in the case of 10% of deformation)	不小于	kPa	60	100	150	
导热系数 Thermal Conductivity	不大于	W/(m·K)	0.041	0.041	0.041	
70°C 48h 后尺寸变化率 Dimensional Stability after 48 hours at 70°C	不大于	%	5	5	5	
水蒸气透湿系数 Water Vapor Permeability	不大于	(ng/Pa·m·s)	9.5	4.5	4.5	
吸水率 Absorption(%)	不大于	%	6	4	2	
熔结① Melting Notal	断裂弯曲负荷 Breaking Load	不小于	N	15	25	25
	弯曲变形 Flexural Deformation	不小于	mm	20	20	20
氧指数② Oxygen Index(OI)	不小于	%	30	30	30	

Physical Property Index of Rockwool

密度 Density	极限偏差 Limit Deviation(%)			导热系数 Thermal Conductivity W/ (m·K) [平均温度 Average Temperature (70±5)°C]	有机物含量 Organic Matter Content(%)	不燃性 Incombustibility	最高使用温度 Max.Temperature (°C)
	优等品 High-class Product	一等品 First-class Product	合格品 Qualified Product				
90				≤ 0.044			400
100	± 10	± 15	± 20	< 0.46	≤ 0.4	A 级 Grade A	600
120							
150							
160				≤ 0.048			

# PACKING AND SHIPPING

## 2



### Fully assembled model



Note:  
For ease of transportation, we produce container houses based on regular way of marine transportation. Shipping method will be determined by the order conditions.



# HOUSING FACILITIES

1



Light



Steel door



Steel Wooden door



Plastic steel window



Aluminum window



Exhaust fan



Stairs



Toilet partition



Solar panel



Wall air conditioner



Cabinet air conditioner



洗手盆  
Hand basin



洗手盆  
Hand basin



洗菜池  
Sink



Sitting toilet



Squatting toilet



Urinal



Shower room



Shower base



Wardrobe



ENGINEERING PROJECT

# CONTAINER OFFICE BUILDING

# 1



Three floor container office building was built in 2014. Main frame is made up of 15 sets container frame, total height is 10.52m and area is 828.9m<sup>2</sup>. This building has three layer office, one large conference room, five small conference rooms and toilets.





ENGINEERING PROJECT

# CONTAINER HOUSE IN SOUTH AFRICA

# 2

This project was built in South Africa in 2010. We provide design, production processing and installation guide for more than 100sets container houses.





ENGINEERING PROJECT

# 20'FT SHIPPING CONTAINER HOUSE IN NEW ZEALAND

## 3



ENGINEERING EXHIBITION

# 40'FT SHIPPING CONTAINER HOUSE IN AUSTRALIA

## 4





ENGINEERING PROJECT

# DATA CENTER IN VANUATU

# 5



Data center in vanuatu was built in 2013, monomer floor area is 245m<sup>2</sup>. There are generators, UPS system, central air conditioner, cable tray and other facilities in. It can support all the internal computer equipments working normal operation more than 36 hours without any external power supply.

Data center was the only place can get in touch with outside in vanuatu storm in 2015, it saved hundreds of lives and became one of the reconstruction base.





ENGINEERING PROJECT

# HAINAN YIBO GARDEN CONTAINER VILLA PROJECT

# 6

Hainan Yibo Garden Container villa project was constructed in 2012, its area is 240 square meters, inner with 5 single sea-view room and double-layer transparent reception hall.

The originality of the double-layer villa's mould is from Chinese traditional Eight Diagrams, the main frame adopt joint shipping container house and light steel structure, with real stone paint, wooden plastic panel, glass curtain wall and so on, create a new kind of classical and modern perfect combination villa.



# QINGDAO INTERNATIONAL HORTICULTURAL EXPOSITION

# 7

Qingdao international horticultural was built in 2014. Main frame of this two-layer building is 48 sets of customized containers frame, total area is about 1440 square meters.





ENGINEERING PROJECT

# CONTAINER COFFEE SHOPS IN IRAQ

## 8



Container coffee shops in Iraq were built in 2012 and 2013. Each size of the unit shop is 11800mm x 4600mm x 2500mm. Storage room, air conditioner, refrigerator, coffee machines, tables, chairs and etc. are equipped with the house.

ENGINEERING PROJECT

# CONTAINER CARPORT

## 9

Galvanized steel sandwich panel is the insulation of container carport, electric shutter and ruffled plate floor are equipped with it. Container carport is economic, fast installation, movable, and etc. Normal size is 6055mm x 4810mm x 2570mm, it could be customized.





ENGINEERING PROJECT

# DORMITORY FOR MINES IN AUSTRALIA

## 10

Dormitory for mines in Australia was built in 2013, modular size for each house is  $14\text{m} \times 3.5\text{m} \times 3\text{m}$ . Main frame is light steel structure, insulation material is glasswool, fireproof plasterboard is used for interior wall to make sure everything is full compliance with Australian standards. Lateral corrugated wall appearance designing is modern.





ENGINEERING PROJECT

# CAMP IN BURKINA FASO

# 11



Camp in burkina faso contains 95 sets of 20ft' flatpack container houses. There are employee dining room, dormitory, public washroom, office and clinics. The camp has complete facilities containing bathroom, water system and electric system. We provide design, manufacture and help installation, offering a full array of services to customers.

