



EVERYTHING UNDER THE SUN

Engineering Exhibition



AOC Warehouse Project
a typical structural steel warehouse .



Arc-type skylight for
automatic smoke exhaust was
installed on the roof.



Leiting Heavy Industry Project
The project of Leiting Heavy
Industry is a structural steel
warehouse, which is used as an
assembly base for automatic
transmission equipment for
metallurgy industry.
It is located in Qingdao High-tech
zone, with length of 198.1m, span
of 120m, eave height of 13.2m, and
ridge height of 18.6m.

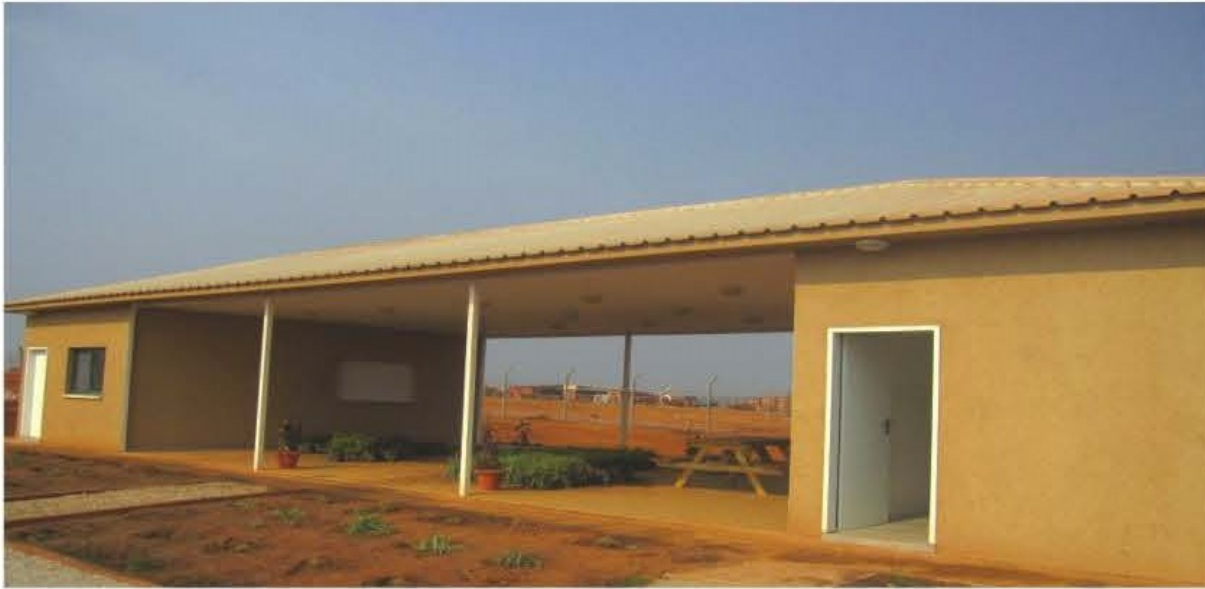


It has Lattice Column without
anchor bolt which means a strict
requirement for the steel column's
perpendicularity, elevation and
axis deviation. Column bracing has
adopted welded channel steel and
angle steel. The type of wall panel
is V-780.



Australia Hangar
Area: 1248m²
Project Time: 2009
Application: Aircraft
Maintenance





Prefabricated House, built with light steel system, steel roof sheet in white, steel wall panel with exterior stone coating, decorated with plasterboard and putty inside. We Built 24 units houses in Cabinda, Angola in 2012. With advantage of attractive appearance, convenient erection and economic solution, prefabricated house is getting more and more popular.



Cassava Factory, with the specification of 50m*15m*6m(L*W*H), mainly used for potato starch processing, which was built in Angola and completed in May of 2013.



Light Steel Structure Workshop in Argentina
 Area: 5930m²
 Main Workshop: 80m*60m*9m(L*W*Eave Height)
 Affiliated Workshop: 1130m²
 Roof and Wall: V-960 steel sandwich panel
 Thermal Insulation: 50mm EPS Foam
 Density: 12kg/m³
 Wind Load: 0.79KN/m²
 Crane: 8 sets (Lifting Capacity: 2 Tons)
 Windows and Doors: E-folling Window & Door
 Project Site: Canuelas, Buenos Aires, Argentina Year of Construction: 2009





South Africa Workshop Project
Heavy-duty Steel Structure Workshop
Area: 7000m³
Crane Tonnage: 30 tons
Size: 27.5m (Span) * 252m (Length) * 11.0m (Height)
Project Time: 2009
Project Site: South Africa
Material Requirements: Used Lattice Column + light steel roof. Both wall and roof use white single tile, to reduce the sun-heat effectively. This workshop is used for manufacturing large circular tubes whose diameter is over 2m, and length is 21m. The customer reconstructed another two same workshops in 2012. Because of the rapidly increasing production capability and scale.



Argentina Workshop





Comprehensive office building four layers, with the steel frame and glass curtain wall.

Our new factory has an area of 30000 square meters.



Apartment / Residence





Hisense Logistics Warehouse



Aoruijin Workshop



Project: gold mining industry

Total project amount of \$540000000.

About 2600 tons of steel.

As high as 39 meters, each column has a 22 tons weight.





Shandong Electric Power Staff Training Base—Sports grandstand is steel pipe truss tensioned membrane structure.



Aruba
Stadium



Vanke
Group
Project



Steel Structure Super-market,
built in Angola. Roof & Wall Cladding are
fireproof fiberglass sandwich panels. All
steel frameworks are covered by fireproof
coating to get better effect of fireproof
after erection.

Workshop in Angola
Structure System: Light Steel Structure
Area: 5000sqm

Arc Corridor



Steel Grid Project



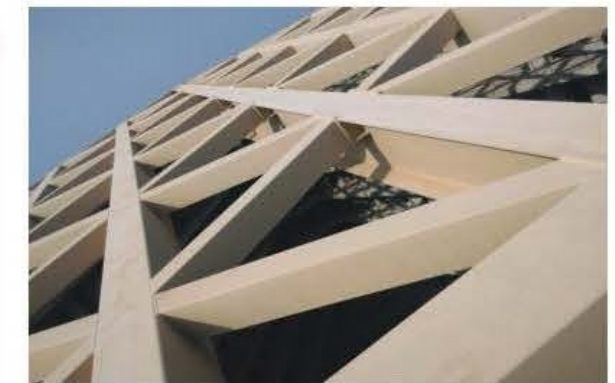
Modeling Building Project



Congo Workshop



Aluminum Perforated Plate

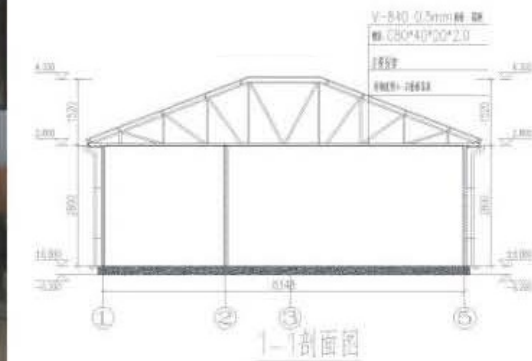


Steel Roof Truss

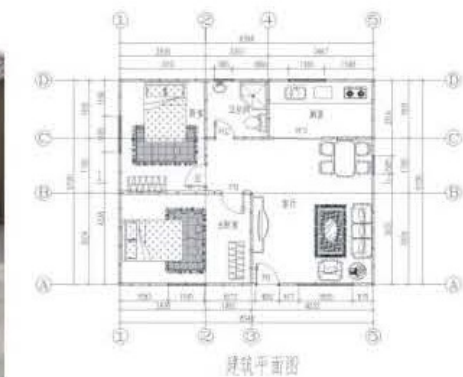
Mauritius Government Project
 It is a Large Vegetable Trading Market
 Project Site: Mauritius
 Project Time: 2010
 Material Requirements: Adopt Steel Tube Structure. Silver spraying after hot dip galvanization finished to get good effect of rust cleaning and get attractive looking

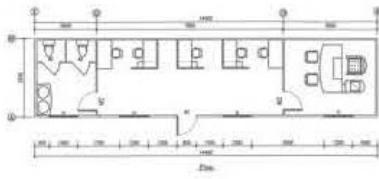


Prefabricated House
 Angola Government Housing Project
 Quantity: 2000 sets
 Area: 75m²/set
 Material Requirements: High density EPS Sandwich Panel as roof and wall+Roof Light Steel Keel, good anti-seismic performance, good heat insulation effect, simple construction and low cost.

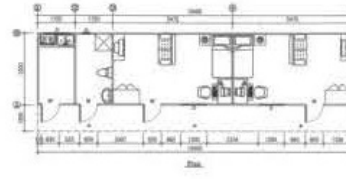


The volume-weight only 750-800kg/m³, the weight of 75mm thickness board is 60kg/m², equal to 1/6 of brick weight, 1/7 of 120mm thickness masonry.

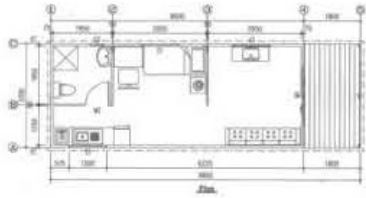




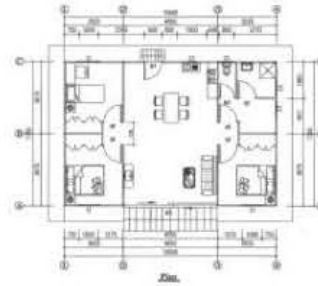
Standard Specification	
Base	Galvanized steel welded base frame
Walls & Roof	75mm external and 50mm internal
Walls & Roof color	Off-white & Beige
Flooring	15mm plywood & PVC covering
Windows	Aluminum frame with single glass sliding window
Door	Aluminum frame with sandwich panel



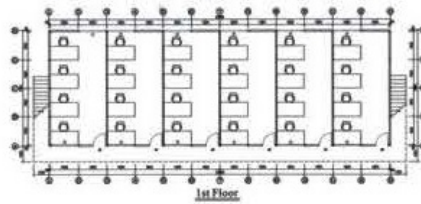
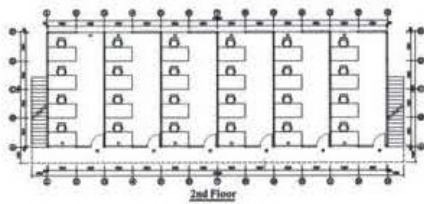
Standard Specification	
Base	Galvanized steel welded base frame
Walls & Roof	75mm external and 50mm internal
Walls & Roof color	Off-white & Beige
Flooring	15mm plywood & PVC covering
Windows	Aluminum frame with single glass sliding window
Door	Aluminum frame with sandwich panel



Standard Specification	
Base	Galvanized steel welded base frame
Walls & Roof	75mm external and 50mm internal
Walls & Roof color	Off-white & Beige
Flooring	15mm plywood & PVC covering
Windows	Aluminum frame with single glass sliding window
Door	Aluminum frame with sandwich panel



Standard Specification	
Structural	Steel structure
Walls & Roof	50mm external and 50mm internal
Walls & Roof color	Off-white & Sky blue
Windows	Aluminum frame with single glass sliding window
Door	Aluminum frame with sandwich panel
Ceiling	Gypsum Board

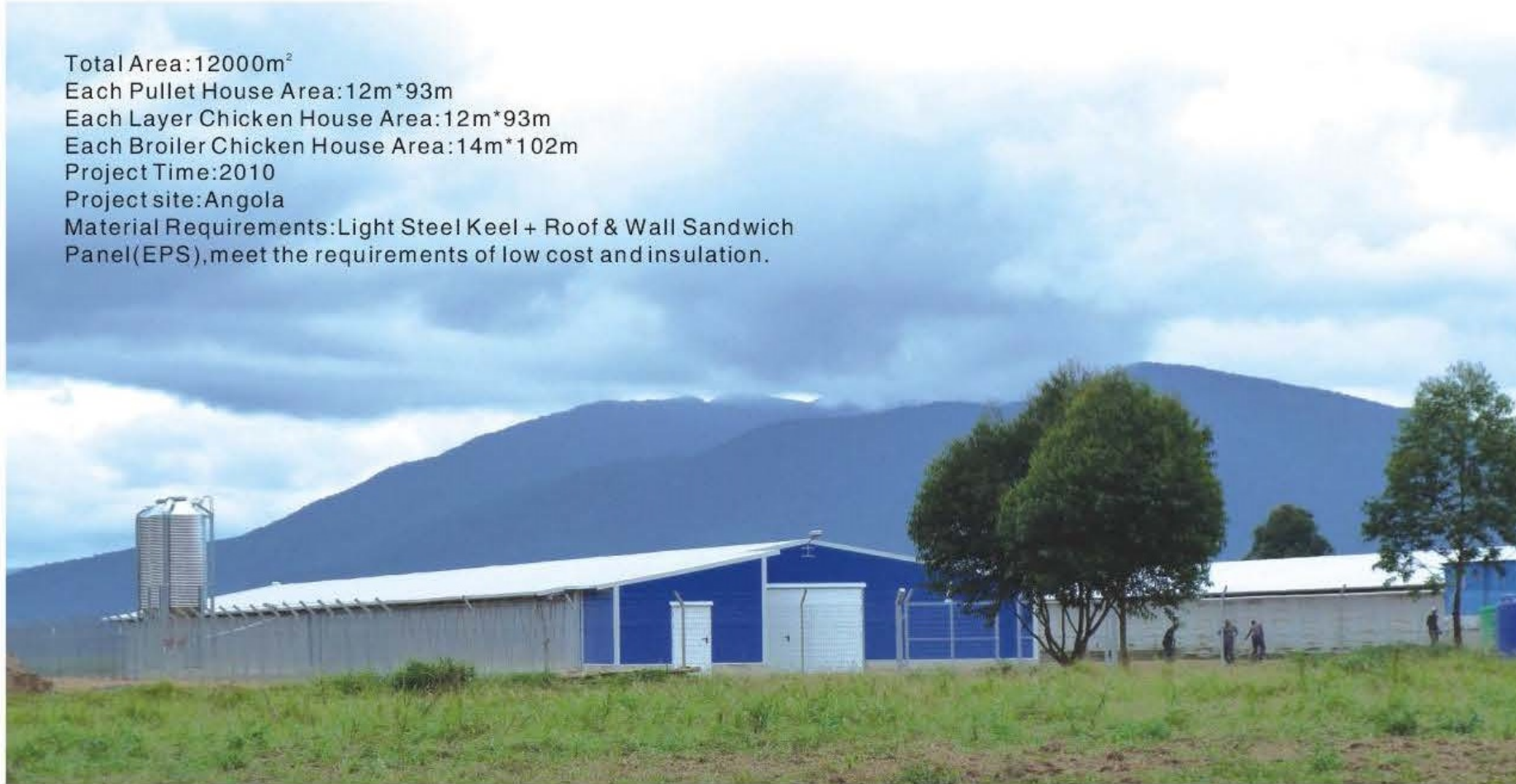


Standard Specification	
Structural	Steel structure
Walls & Roof	50mm external and 50mm internal
Walls & Roof color	Off-white & Sky blue
Windows	PVC sliding window
Door	Steel frame with sandwich panel
Ceiling	Gypsum Board



Standard Specification	
Structural	Steel structure
Walls & Roof	50mm external and 50mm internal
Walls & Roof color	Off-white & Sky blue
Windows	PVC sliding window
Door	Steel frame with sandwich panel
Ceiling	Gypsum Board

Total Area: 12000m²
Each Pullet House Area: 12m*93m
Each Layer Chicken House Area: 12m*93m
Each Broiler Chicken House Area: 14m*102m
Project Time: 2010
Project site: Angola
Material Requirements: Light Steel Keel + Roof & Wall Sandwich Panel(EPS), meet the requirements of low cost and insulation.



Angola Poultry Shed Project

Prefabricated Layer House in the specification of 120m*15m, 3 units totally, which was built in Sandwich Panels. Water tower and Automatic eggs load and off-loading system are equipped

Luanda, Angola. Front and Back Walls are covered by Curtain; Side Walls are covered by EPS outside of poultry house.

Australia Chicken Shed

Size: 170m*17m*3.1m(2890 spm)

General information of chicken shed:

1.Wall Sandwich Panel: 0.5mm/50mm
fibreglass/0.4mm, V-950

2.Roof: Steel Sheet in the thickness of 0.5mm, V-840

3.Ceiling: Sandwich Panel, V-950

4.Steel Frame:

Steel Truss and Column:

RHS with hot dip galvanized surface treatment

Galvanized C and Z Purlins

Bracing steel

5.Flashing edgefold

6.Gutter with downpipe and accessories

7.Al. window frame and window

8.EPS sandwich panel door, fitted with Al. sheet

9.High-strength Bolt, Common Bolt, Self-tapping
Screw, Rivet, Sealant etc.



Exhibition: products and Equipment





Steel Coils



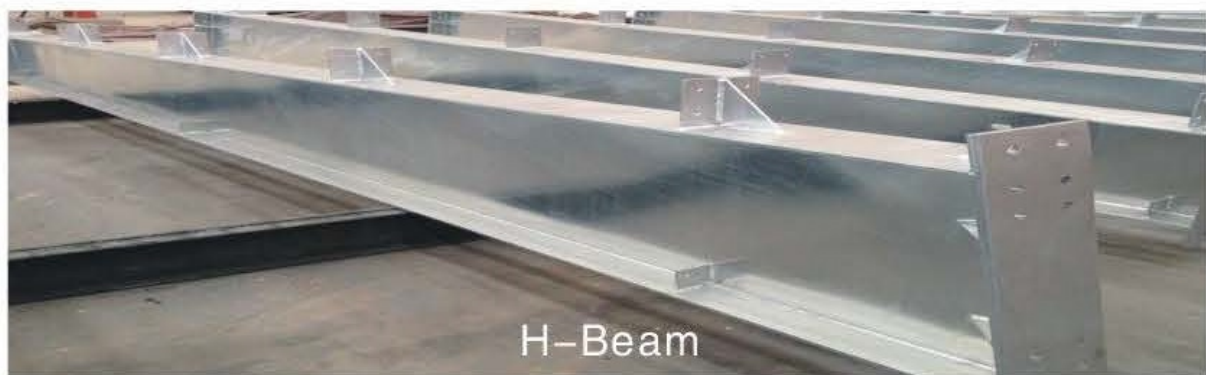
Steel Profile Sheet



C-Beam



Z-Beam



H-Beam

EPS Cement Sandwich Panel

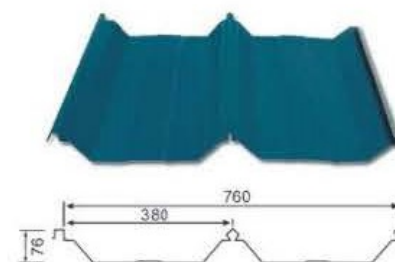


Steel Materials



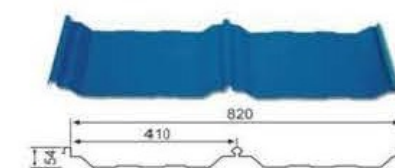
YX82-475(U-475)

EFFECT WIDTH(mm)	475		APPLICATION
FEEDING WIDTH(mm)	600		
THICKNESS(mm)	0.5	0.6	JH-ROOF PANEL
SECTION INERTIA(cm ² /m)	39.3	47.24	
SECTION RESISTANC(cm ² /m)	22.62	27.21	



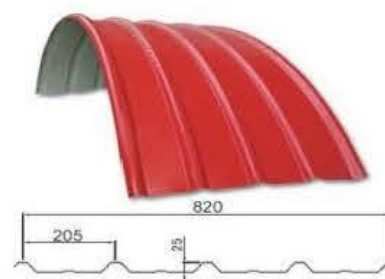
YX76-380-760

EFFECT WIDTH(mm)	760		APPLICATION
FEEDING WIDTH(mm)	1000		
THICKNESS(mm)	0.5	0.6	JH-ROOF PANEL
SECTION INERTIA(cm ² /m)	39.03	46.86	
SECTION RESISTANC(cm ² /m)	17.89	21.42	



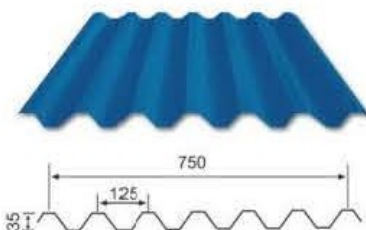
YX54-410-820

EFFECT WIDTH(mm)	820		APPLICATION
FEEDING WIDTH(mm)	1000		
THICKNESS(mm)	0.5	0.6	JH-ROOF PANEL
SECTION INERTIA(cm ² /m)	22.62	27.14	
SECTION RESISTANC(cm ² /m)	15.06	18	



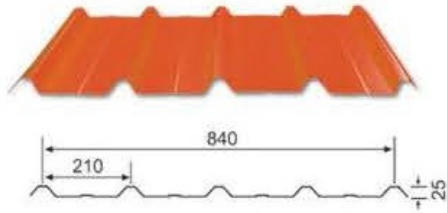
YX25-205-820(揄弧)

EFFECT WIDTH(mm)	820		APPLICATION
FEEDING WIDTH(mm)	1000		
THICKNESS(mm)	0.5	0.6	ROOF PANEL
SECTION INERTIA(cm ² /m)	4.38	5.32	
SECTION RESISTANC(cm ² /m)	7.18	8.55	



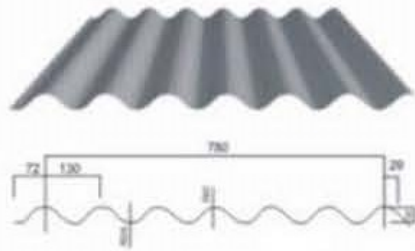
YX35-125-750(V-125)

EFFECT WIDTH(mm)	750		APPLICATION
FEEDING WIDTH(mm)	600		
THICKNESS(mm)	0.5	0.6	ROOF AND WALL PANEL
SECTION INERTIA(cm ² /m)	10.61	12.74	
SECTION RESISTANC(cm ² /m)	6.12	7.33	



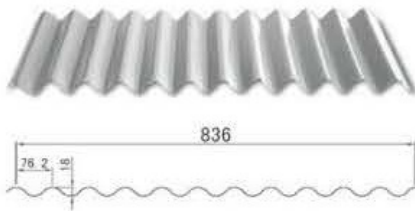
YX25-210-840

EFFECT WIDTH(mm)	840		APPLICATION
FEEDING WIDTH(mm)	1000		
THICKNESS(mm)	0.5	0.6	ROOF AND WALL PANEL
SECTION INERTIA(cm ⁴ /m)	4.44	5.38	
SECTION RESISTANC(cm ³ /m)	6.98	8.31	



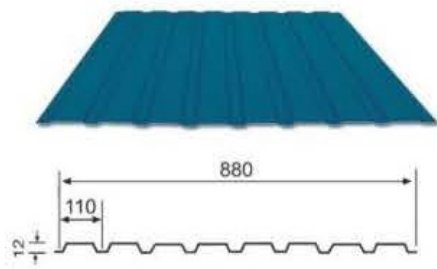
YX41-63.5-780

EFFECT WIDTH(mm)	825		APPLICATION
FEEDING WIDTH(mm)	1000		
THICKNESS(mm)	0.5	0.6	ROOF AND WALL PANEL
SECTION INERTIA(cm ⁴ /m)	2.45	2.94	
SECTION RESISTANC(cm ³ /m)	2.57	3.07	



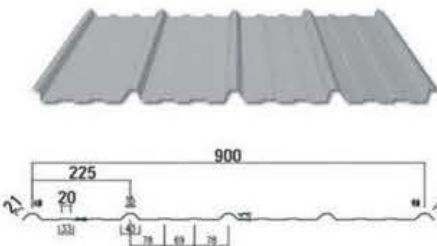
YX18-76.2-836(弧形)

EFFECT WIDTH(mm)	836		APPLICATION
FEEDING WIDTH(mm)	1000		
THICKNESS(mm)	0.5	0.6	ROOF AND WALL PANEL
SECTION INERTIA(cm ⁴ /m)	2.45	2.94	
SECTION RESISTANC(cm ³ /m)	2.57	3.07	



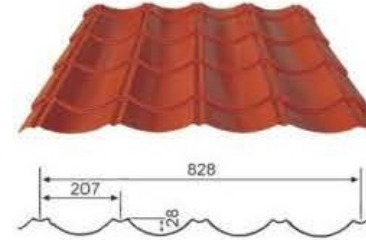
YX12-110-880(V-110)

EFFECT WIDTH(mm)	880		APPLICATION
FEEDING WIDTH(mm)	1000		
THICKNESS(mm)	0.5	0.6	Roof Lining, WALL PANEL and Packing Sheet
SECTION INERTIA(cm ⁴ /m)	1.41	1.69	
SECTION RESISTANC(cm ³ /m)	1.66	1.98	



YX15-225-900

EFFECT WIDTH(mm)	900		用途 APPLICATION
FEEDING WIDTH(mm)	1000		
THICKNESS(mm)	0.5	0.6	Roof Lining and WALL Panel
SECTION INERTIA(cm ⁴ /m)	1.23	1.48	
SECTION RESISTANC(cm ³ /m)	3.85	4.55	



YX28-207-828

EFFECT WIDTH(mm)	828		APPLICATION
FEEDING WIDTH(mm)	1000		
THICKNESS(mm)	0.5	0.6	Roof Panel
SECTION INERTIA(cm ⁴ /m)	1.51	6.18	
SECTION RESISTANC(cm ³ /m)	3.93	4.7	

color chart



RAL 9002
Grey white



RAL 3001
Signal red



RAL 9006
White aluminium



RAL 6005
Moss green



RAL 9003
Signal white



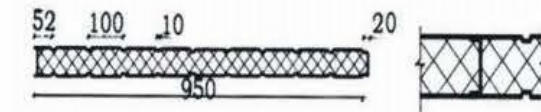
XGZ Blue



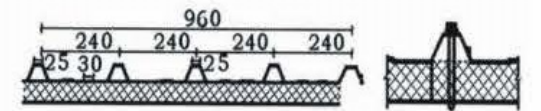
Energy-Saving Wall Panel



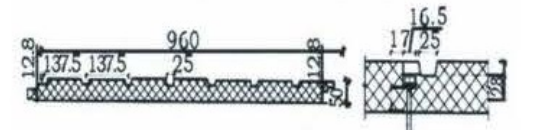
950 (1150) (EPS)



950

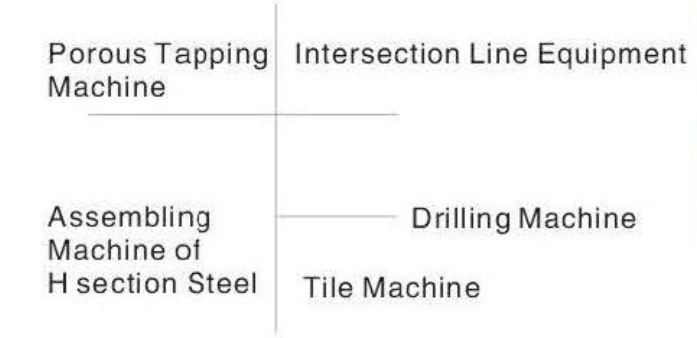
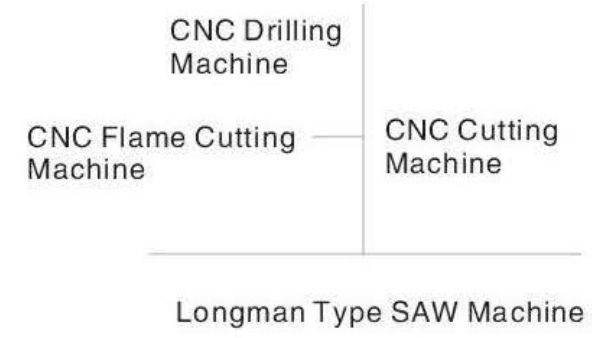


960



Energy-Saving Roof Panel







Company Qualification & Honor

Customer come first

Today's credit builds tomorrow's market that brings the future profit

