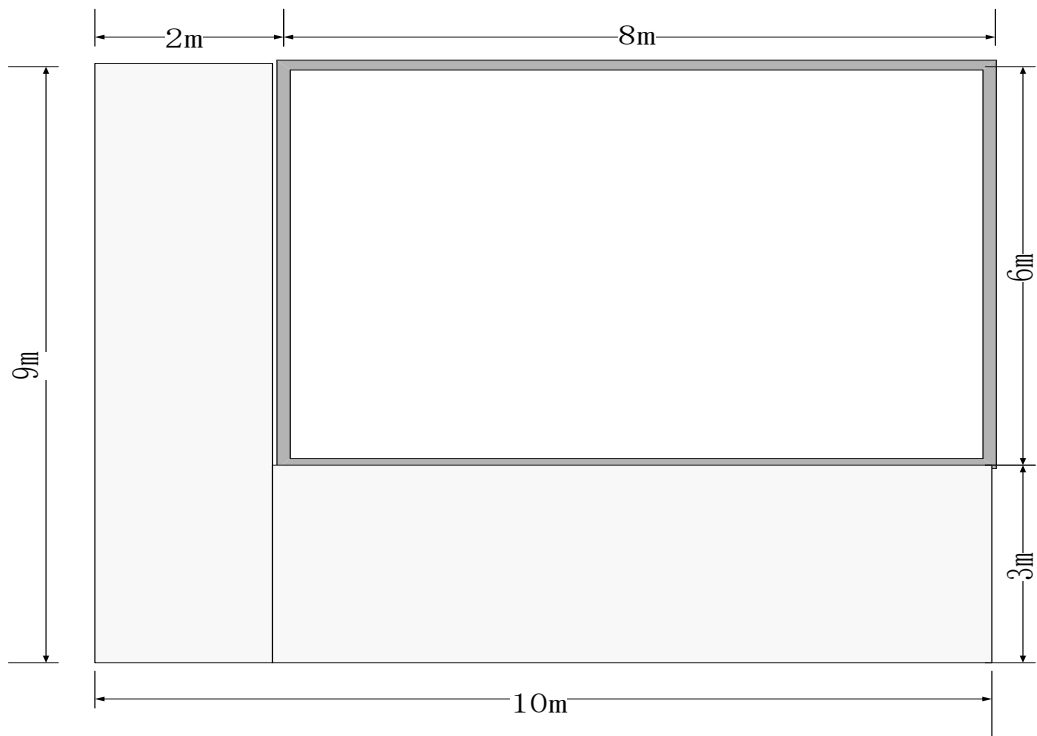
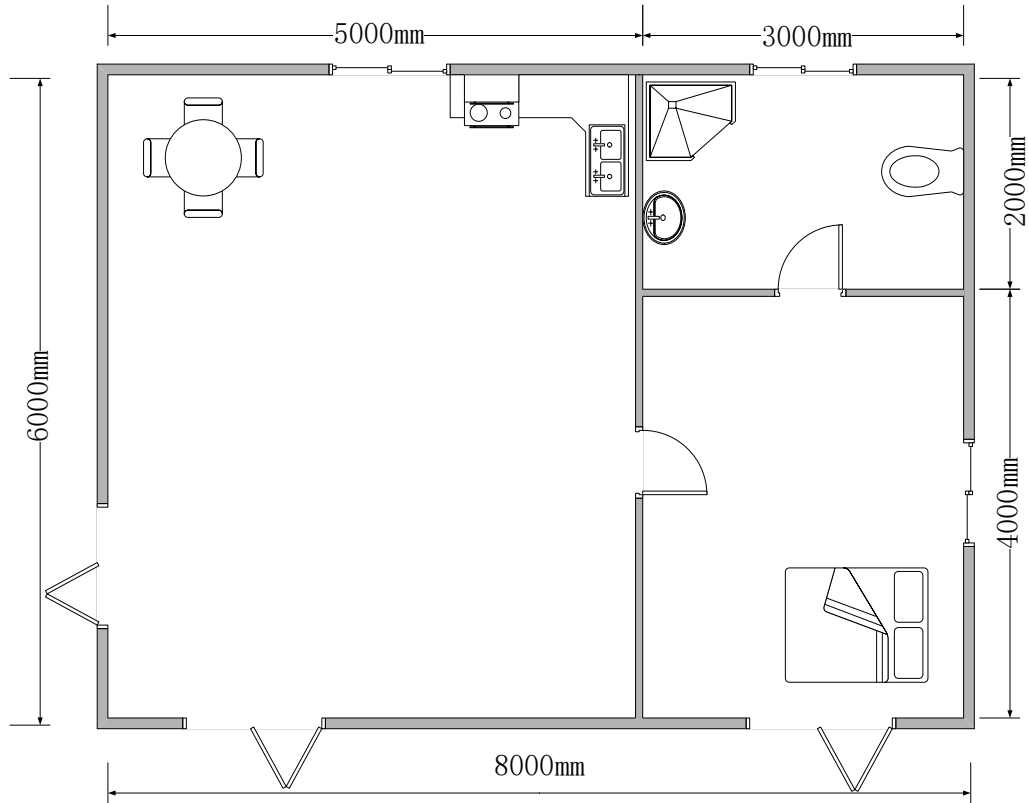






# AUSSIE MATERIAL LIST & SPECIFICATION

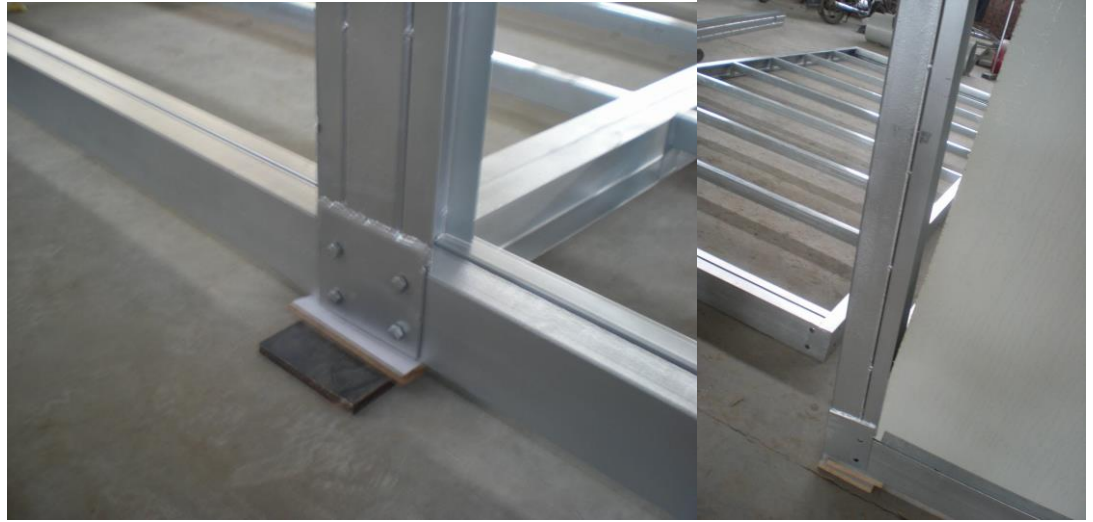
## LAYOUT



<b>ITEM</b>	<b>DESCRIPTION</b>
<b>SIZE</b>	<p>6X8X(2.87-3.8)M</p> <p>SIZE OF ROOF: 8.7X9.2M</p>
<b>BASE</b>	<p>GALVANIZED STEEL CHASSIS, JOINTED BY BOLTS</p> <p>CAN BE SUPPORTED BY BLOCK</p>    

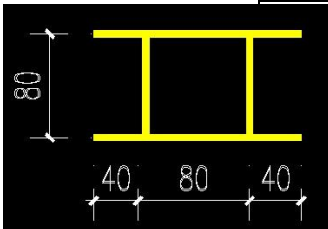
# FRAME

## GALVANIZED STEEL POST: RHS + U-CHANNEL



## GALVANIZED STEEL TRUSS: RHS + U-CHANNEL

ANTI-WIND DESIGN: INSERT THE ROOF PANEL INTO HOUSE FRAME





**ROOF TRUSS + ROOF PANEL**



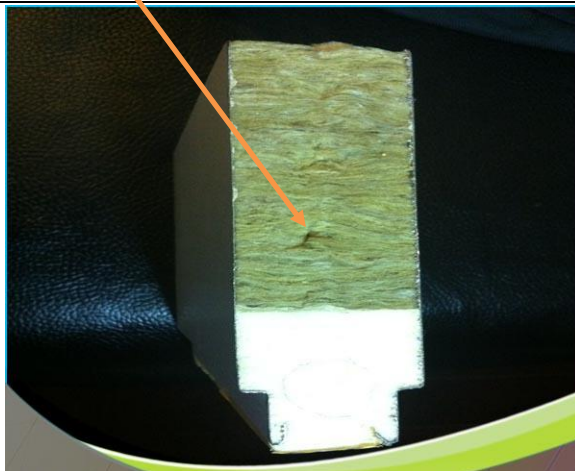


**WALL  
&  
ROOF**

**GALVANIZED STEEL SHEET 0.6MM+** COLOR PAINTING (NO RUST)

**CONCAVE-CONVEX INTEGRATED DESIGN (EASY ASSEMBLE)**

**150MM ROCK WOOL** SANDWICH PANEL





## HEAT PRESERVING HEAT INSULATION

THE PANEL HAS THE UNIQUE POLYURETHANE FOAM SEALING AT BOTH SIDES WHICH IS THE BEST MATERIALS FOR HEAT RESERVING AND HEAT INSULATION.



## FIRE PROOFING

THE PANEL ALSO HAS THE OUTSTANDING FIRE PROOFING, SO IT CAN MAKES YOUR LIFE MORE SAFE



## HAVE GOOD WATER-PROOFING AND DAMP-PROOFING

THE PANEL HAS COATED ZINC BOARD IN EXTERIOR AND INTERIOR, AND CONCAVE-CONVEX INTEGRATED DESIGN SO THAT THERE IS NO CRACK, AND THERE IS POLYURETHANE FOAM PROTECTION INSIDE SO THAT IT HAS LOW WATER-SUCKING, HIGH DAMP-PROOFING AND PERCOLATING PREVENTION.



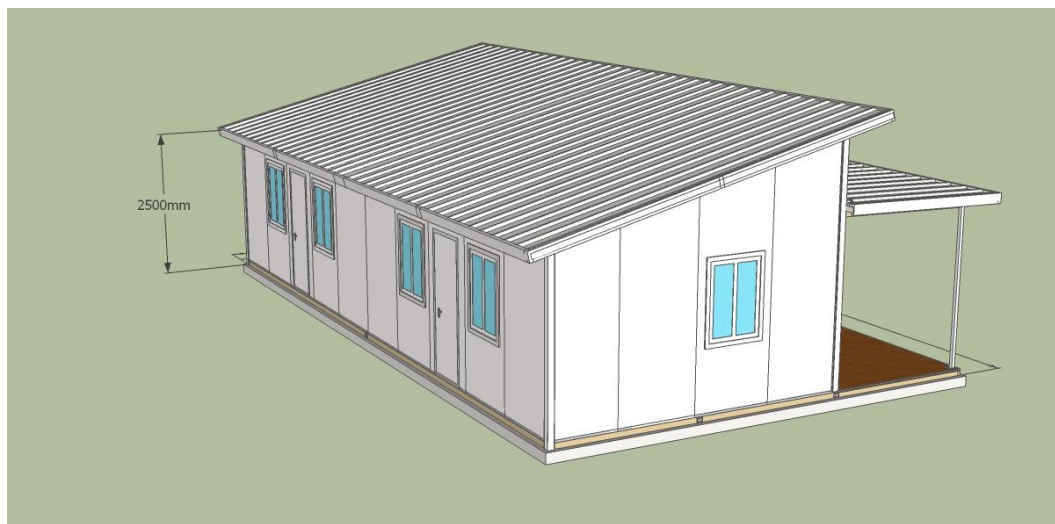
## LIGHT WEIGHT, HIGH HARDNESS AND QUICK CONSTRUCTION

THE PANEL IS MADE OF COATED ZINC PANEL AND POLYURETHANE FOAMING. THE WEIGHT IS ONLY 1/6 WEIGHT IS ONLY 1/6 WEIGHT OF THE SIMILAR BUILDING MATERIALS, HIGH HARDNESS, IT IS NOT EASY TO DAMAGE. AND HAS CONVENIENT TRANSPORTATION. IT DOES NOT NEED SUB-SEALING. CONCAVE-CONVEX INTEGRATED DESIGN SO THAT VERY QUICKLY INSTALLATION.

DENSITY KGS/M3	Coefficient of heat conductivity (25°C)	Fire resistance	Bending deformation mm	Compression strength
PU ≥ 40 ROCK WOOL ≥ 100	PU ≤ 0.024 ROCK WOOL ≤ 0.044	Composite grade A	≥ 10	≥ 0.18



# ONE SLOPE ROOF



If you like you can design a veranda in the front of house.



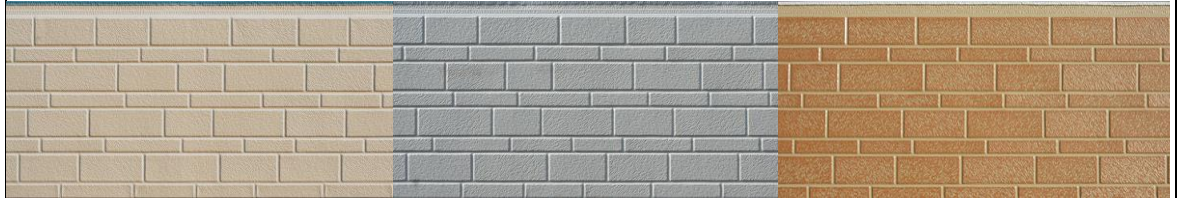
**DECORATI  
ON  
ON  
WALL**

**OPTION NO.1 ---- PVC CLADDING : CHEAPER COST**



**OPTION NO.2 ---- EMBOSSING POLYURETHANE SANDWICH CLADDING**

HEATING INSULATION	WATER PROOF	FIRE RETARDANT	SOUND INSULATION





# WINDOW

PVC WINDOW WITH DOUBLE GLASS: **1500x1000mm**----**2 PCS**

DOUBLE GLASS PVC WINDOW: **400\*600MM**----- **1 PC**



# DOOR

FOLDING GLASS DOOR: **2000X2040MM**----**3 PCS**

INSIDE PVC DOOR: **820X2040MM**-----**2 PCS**



# VINYL FLOOR



# PRICE LIST

Update Quotation Time: 25th April, 2016

<b>HOUSE SIZE</b>	<b>6*8 *(2.7-3.5)m</b>
<b>HOUSE BODY WITH DECKING</b>	
<b>WINDOWS</b>	
<b>DOORS</b>	
<b>EXTERIOR WALL DECORATION</b>	
<b>VINYL FLOOR</b>	
<b>FREIGHT TO ASIAN PORTS</b>	
<b>INSURANCE</b>	
<b>TOTAL</b>	<b>CIF TO MOST PORTS IN ASIA REGON USD 14,950.00</b>
<b>PRICE VALID</b>	<b>WITHIN 14 DAYS</b>
<b>LOADING</b>	<b>HOUSE WITH FITTINGS: 1 SET / 20'HQ</b>
<b>DELIVERY TIME</b>	<b>WITHIN 30 DAYS</b>
<b>PAYMENT</b>	<b>50% T/T DEPOSIT AND THE BALANCE BEFORE SHIPMENT</b>
<b>MOQ</b>	<b>MINIMUM ORDER QUANTITY: ONE 20'HQ CONTAINER</b> <b>LOADING</b>