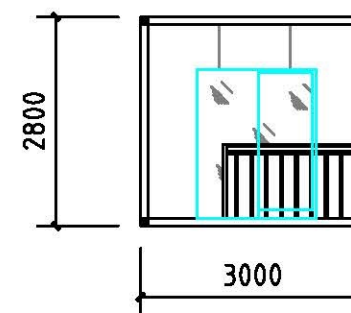
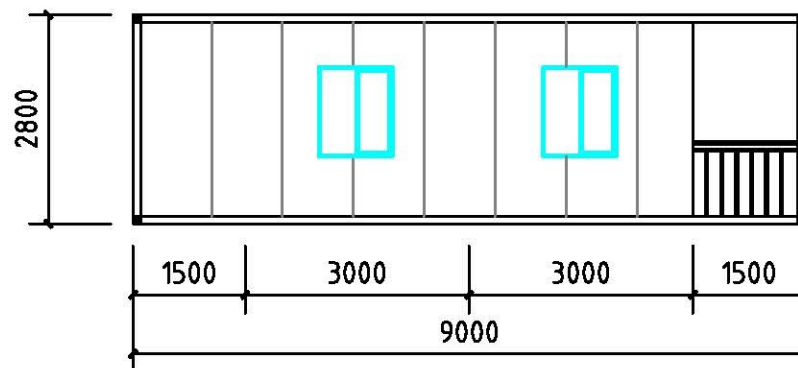


floor plan



front elevation



side elevation

Door & Window

type	Mark	Specification(mm)	Num	Note
Door	D1	1600X2000	1	
	D2	800X2000	1	
Window	W1	1000X1200	3	
	W2	800X600	1	



EVERYTHING under THE SUN

CONTENTS

HOUSING ANYWHERE



Product series

company's products are mainly divided into light steel villa series, the series of container products and prefabricated houses. All products can be an independent development and production, the company has a professional design team, can be customized for clients to build their own family style design, create distinctive products.



Light Steel Villa



Product introduction

Steel structure villa system technology is the use of 100% of the cold-formed steel material, can be used to build 6 floors below the construction technology, the technical system construction member body is composed of a small bridge, cold-formed steel composite installation, this bridge is made of galvanized cold welding of thin-wall square (rectangular tube) and triangle type V connection component, this bridge can be built beam, wall, floor, can also be constructed roof. In short, the square tube structures of small bridge can construct buildings of all components, these components are in the factory to complete the processing, and then transported to the construction site, and then the construction of the building. After the laying of the inner and outer walls, and roof plate profile, at the same time in the wall and floor, roof insulation, bridge gap filling sound insulation material.

Advantages and characteristics

1、Anti wind and earthquake

Light steel structure villa system main body is made of section shape is square, rectangular and V type connectors. Hollow steel structure is not easy to twist, coupled with a bridge connecting mode, the force transmission and uniform distribution, load transfer system integrity, increased the torsional resistance and load ability;

2、Energy saving, sound insulation

2. **Energy saving, sound insulation**
Light steel structure villa system building wall and floor is independent of the two pipe bridge in bridge structure, the interstices filled with rock wool, has good vibration isolation, sound-absorbing function, blocking the extraneous noise and random vibration intrusion. The experimental results show that the external wall panel system, thermal resistance $RSI=2.53U(W/M2.0C)$, $R=14.4$, non-load-bearing wall design of $Rw=50$ DB sound insulation, load-bearing wall volume $Rw=51$ DB sound insulation, the structure has good thermal insulation and sound insulation properties.

3、Fireproof

Light steel structure villa architecture using bearing member of outsourcing fire good performance of sheet metal, such as fiber cement board. After the test, strong load bearing refractory 2 hours 30 minutes, achieved the national fire codes.

4、Low carbon environmental protection

Once the need for housing renovation in the future, dismantled building can reuse, high recovery rate, reached the international developed countries to develop the green building assessment system, according to Chinese (national demonstration project construction technology points of the relevant provisions of the) no red brick, protecting the cultivated land.

The scope of application

1. civilian residential building
2. commercial, office and housing industry
3. recreational areas, tourist areas, Ecological Farm Resort

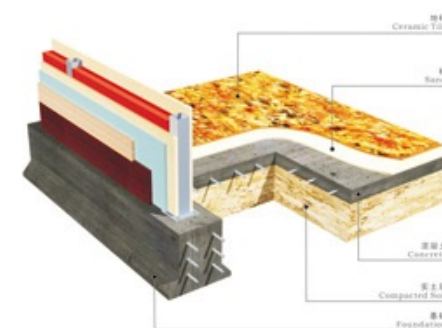
Light Steel Villa

Dissection

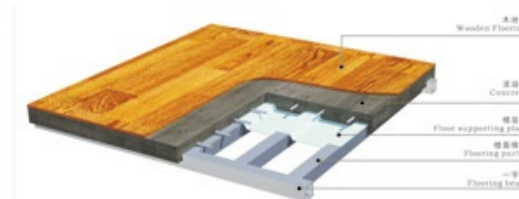


Light Steel *Villa*

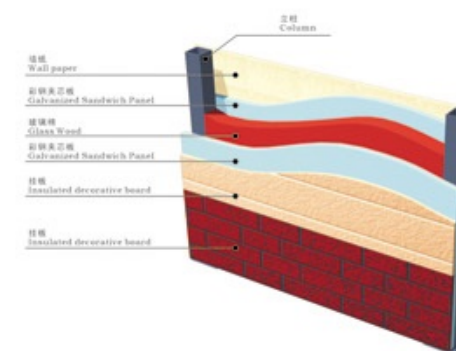
Dissection



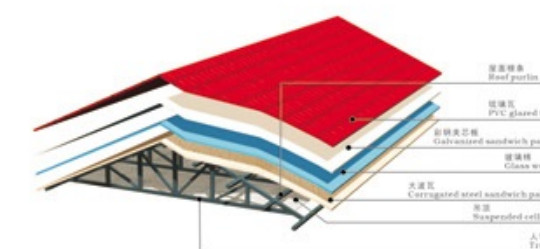
Foundation structures



Floor structure



Wall structure



Roof tiles structure

ADIYH-V01

Light Steel Villa



Light Steel Villa

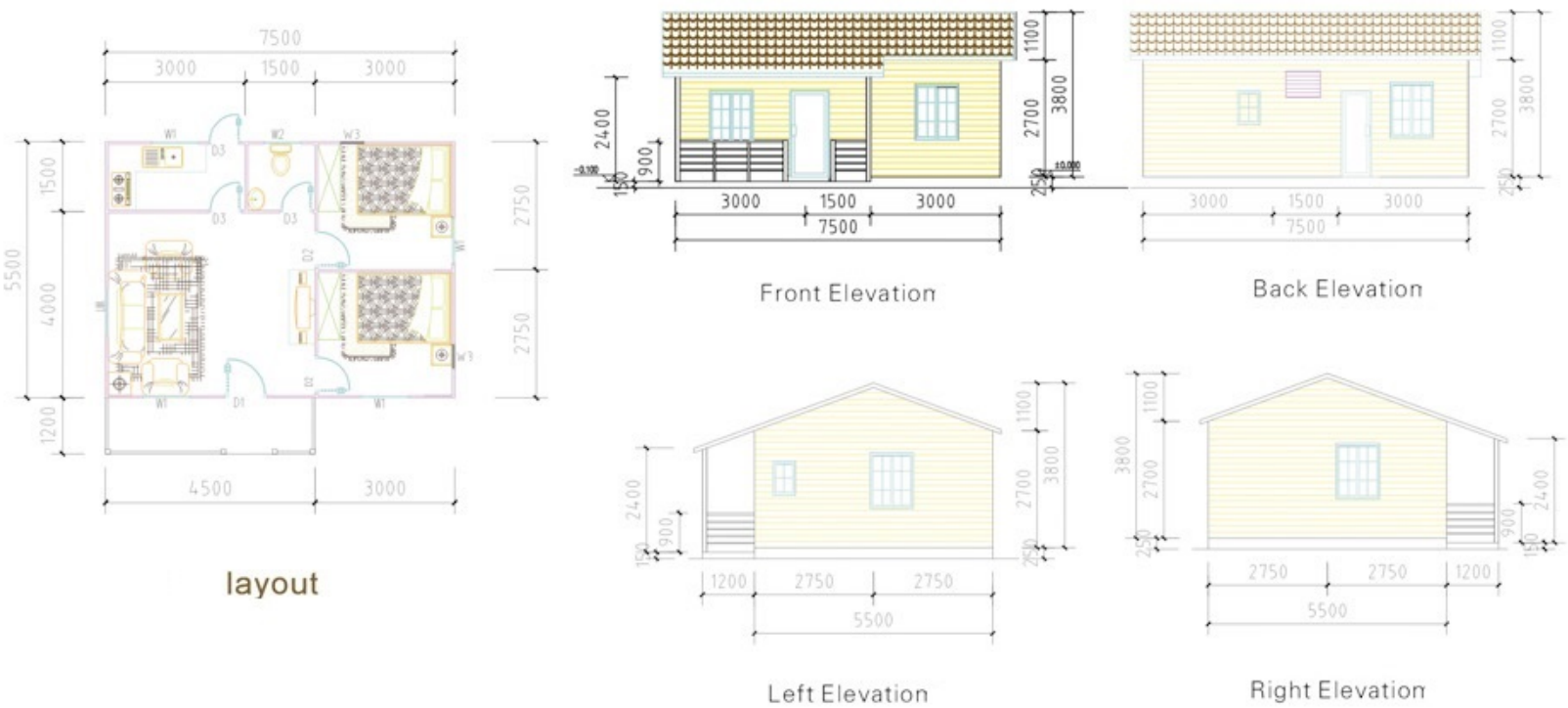
Insight



Part



Elevation



SPECIFICATIONS

External Length		7500mm				
External Width		5500mm				
Height		2700m+1100m				
Area		46.65m ²				
Bedroom	Parlor	Dining room	Kitchen	Toilet	Study	Porch
2	1	1	1	1		1
Name	Standard material		Optional materials			
Roof	Decorative	Asphalt shingles	Color steel glazed tile, metal color stone tile, resin tile			
	Waterproof layer	Color steel plate	Breathable film, felt paper, PE material			
	Insulation	EPS sandwich panel	Rock wool, Glass wool			
	Purlins	Rectangular tube	C-shaped steel			
	Roof truss	Rectangular tube	C-shaped steel, hot-rolled steel H			
Wall	Ceiling	PVC ceiling	Plaster ceiling, calcium silicate board, gypsum board			
	Decorative	PVC ceiling	PU metal cladding, calcium silicate board			
	Insulation	EPS sandwich panel	PU sandwich panels, sandwich panel, glass wool			
	Ring beam	Rectangular tube	C-shaped steel			
	Steel column	Rectangular tube	Hot-rolled steel H			

ADIYH-V02

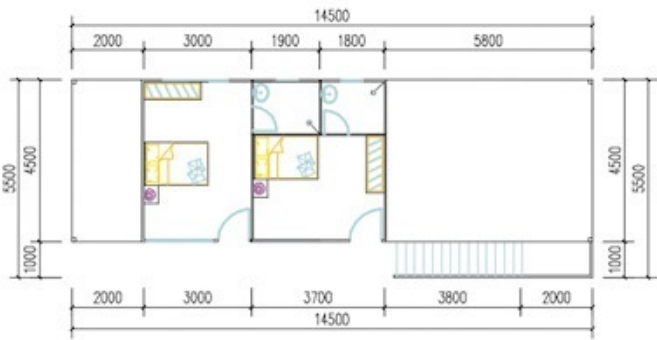
Light Steel Villa



Part

Light Steel Villa

Elevation

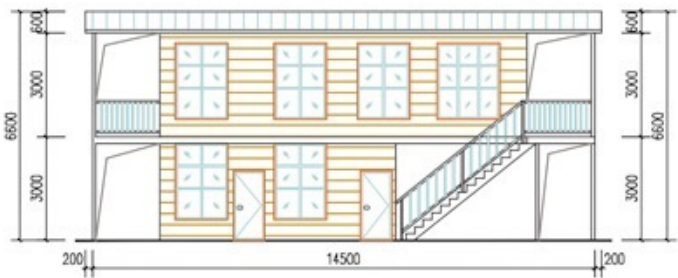


layout



Left Elevation

Right Elevation



Front Elevation

SPECIFICATIONS

External Length	14500mm					
External Width	5500mm					
Height	3000m+3000m+600mm					
Area	164m²					
Bedroom	Parlor	Dining room	Kitchen	Toilet	Study	Porch
3	1	1	1	1		1
Name	Standard material		Optional materials			
Roof	Decolative	Asphalt shingles	Color steel glazed tile, metal color stone tile, resin tile			
	Waterproof layer	Color steel plate	Breathable film, felt paper, PE material			
	Insulation	EPS sandwich panel	Rock wool, Glass wool			
	Purlins	Rectangular tube	C-shaped steel			
	Roof truss	Rectangular tube	C-shaped steel, hot-rolled steel H			
Wall	Ceiling	PVC ceiling	Plaster ceiling, calcium silicate board, gypsum board			
	Decolative	PVC ceiling	PU metal cladding, calcium silicate board			
	Insulation	EPS sandwich panel	Pursan sandwich panels, sandwich panel, glass wool			
	Ring beam	Rectangular tube	C-shaped steel			
Floor	Steel column	Rectangular tube	Hot-rolled steel H			
	Decolative	PVC ceiling	Carpet, laminate flooring, solid wood flooring			
	Floor	Plywood	Calcium silicate board, OSB board, sandwich panel			
	Insulation layer	EPS sandwich panel	Rock wool, Glass wool			
	Floor purlins	C-shaped steel	Rectangular tube			
	Floor beam	C-shaped steel	Rectangular tube, hot-rolled steel H			
	Ceiling	PVC ceiling	Plaster ceiling, calcium silicate board, gypsum board			

ADIYH-V03

Light Steel Villa



Part

Light Steel Villa



layout

Elevation

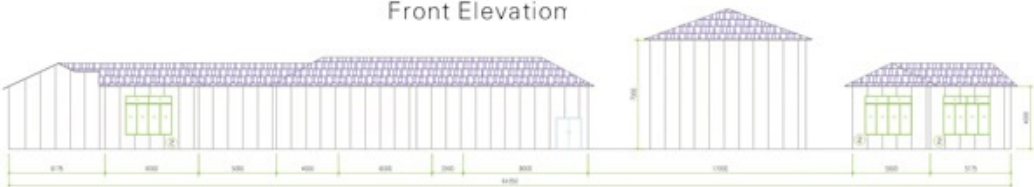


Left Elevation

Right Elevation



Front Elevation



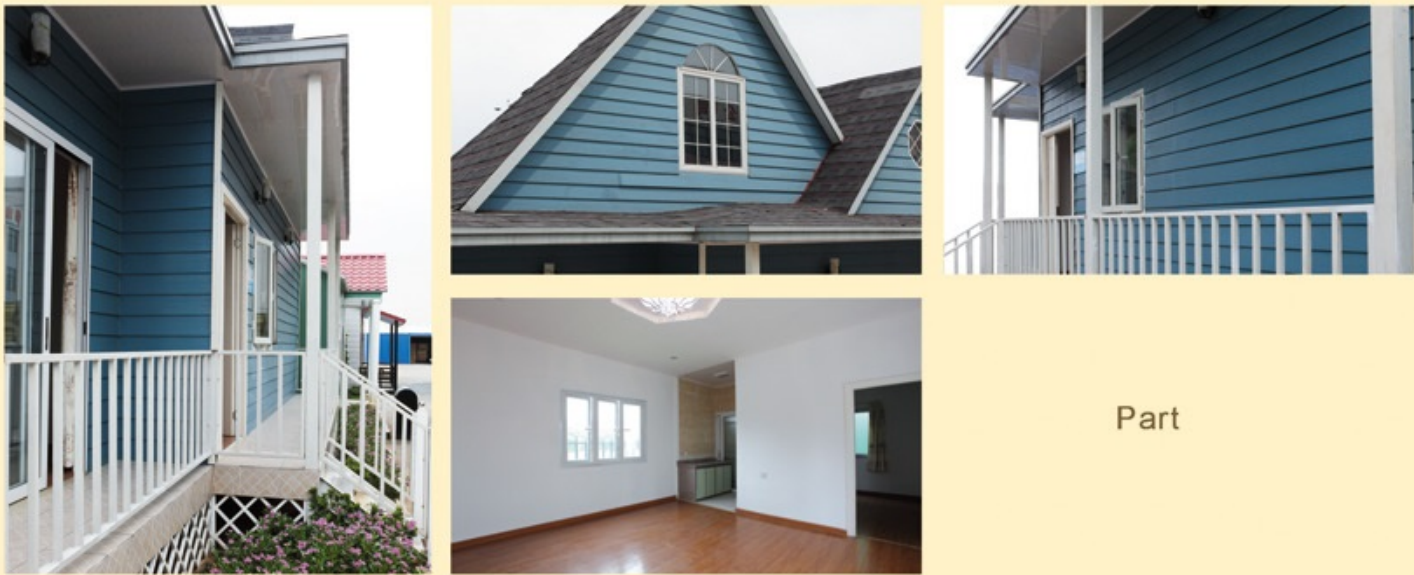
Back Elevation

SPECIFICATIONS

External Length			64500mm			
External Width			21650mm			
Height			7000m+ 1200m			
Area			164m ²			
Bedroom	Parlor	Dining room	Kitchen	Toilet	Study	Porch
4	2	3	2	6	2	9
Name	Standard material			Optional materials		
Roof	Decolative	Asphalt shingles	Color steel glazed tile, metal color stone tile, resin tile			
	Waterproof layer	Color steel plate	Breathable film, felt paper, PE material			
	Insulation	EPS sandwich panel	Rock wool, Glass wool			
	Purlins	Rectangular tube	C-shaped steel			
	Hootruss	Rectangular tube	C-shaped steel, hot-rolled steel H			
Ceiling	PVC ceiling	Plaster ceiling, calcium silicate board, gypsum board				
Wall	Decolative	PVC ceiling	PU metal cladding, calcium silicate board			
	Insulation	EPS sandwich panel	Pumsan dwich panels, sandwich panel, glass wool			
	Ring beam	Rectangular tube	C-shaped steel			
	Steel column	Rectangular tube	Hot-rolled steel H			
Floor	Decolative	PVC ceiling	Carpet, laminate flooring, solid wood flooring			
	Floor	Plywood	Calcium silicate board, OSB board, sandwich panel			
	Insulation layer	EPS sandwich panel	Rock wool, Glass wool			
	Floor purlins	C-shaped steel	Rectangular tube			
	Floor beam	C-shaped steel	Rectangular tube, hot-rolled steel H			
	Ceiling	PVC ceiling	Plaster ceiling, calcium silicate board, gypsum board			

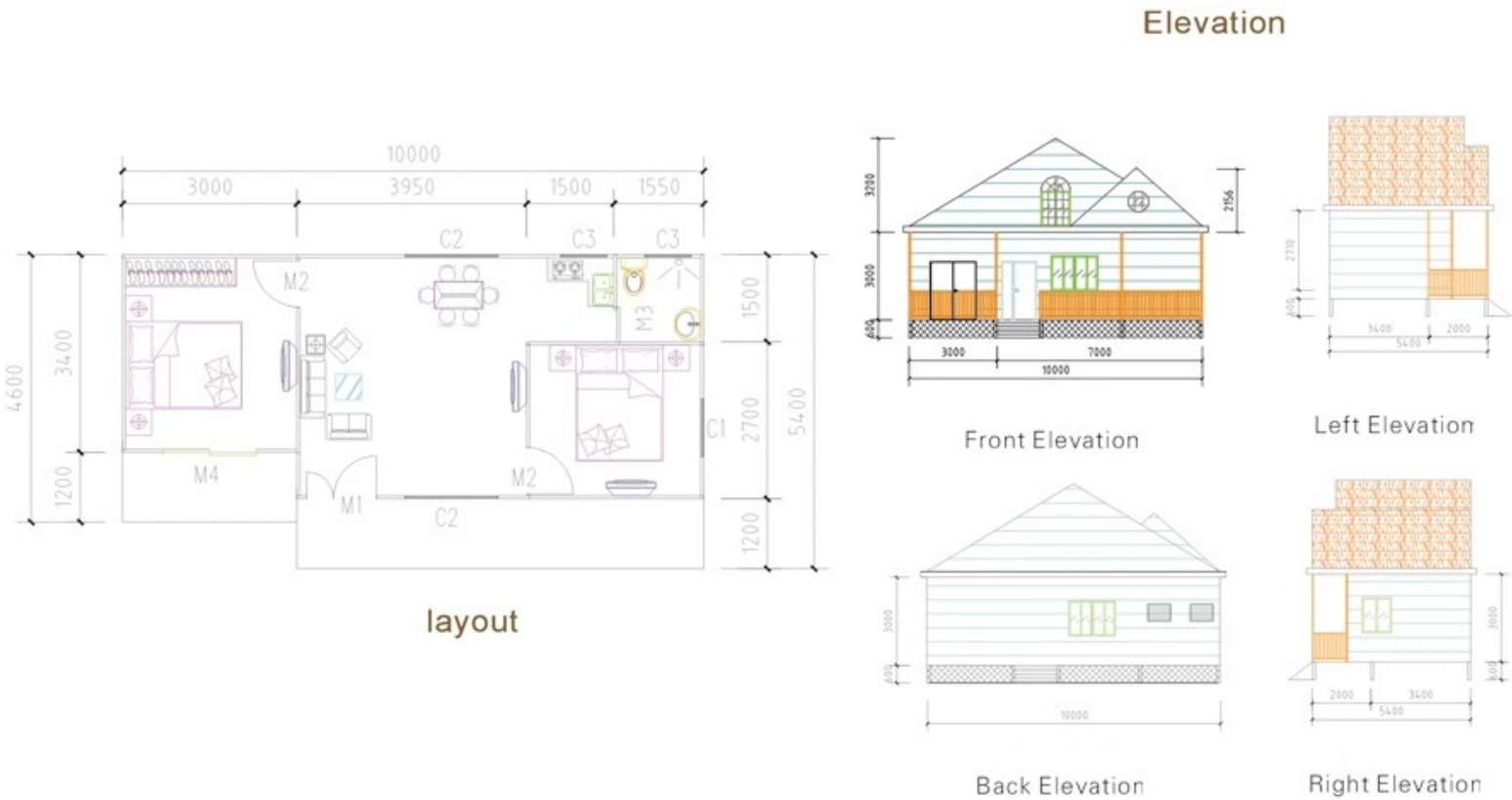
ADIYH-V04

Light Steel Villa



Part

Light Steel Villa



SPECIFICATIONS

External Length			10000mm			
External Width			5410mm			
Height			3000m+3200m			
Area			51.6m²			
Bedroom	Parlor	Dining room	Kitchen	Toilet	Study	Porch
2	1	1	1	1		2
Name	Standard material			Optional materials		
Roof	Decolative		Asphalt shingles	Color steel glazed tile, metal color stone tile, resin tile		
	Waterproof layer		Color steel plate	Breathable film, felt paper, PE material		
	Insulation		EPS sandwich panel	Rock wool, Glass wool		
	Purlins		Rectangular tube	C-shaped steel		
	Roof truss		Rectangular tube	C-shaped steel, hot-rolled steel H		
	Ceiling		PVC ceiling	Plaster ceiling, calcium silicate board, gypsum board		
Wall	Decolative		PVC ceiling	PU metal cladding, calcium silicate board		
	Insulation		EPS sandwich panel	PU sandwich panels, sandwich panel, glass wool		
	Ring beam		Rectangular tube	C-shaped steel		
	Steel column		Rectangular tube	Hot-rolled steel H		
Floor	Decolative		PVC ceiling	Carpet, laminate flooring, solid wood flooring		
	Floor		Plywood	Calcium silicate board, OSB board, sandwich panel		
	Insulation layer		EPS sandwich panel	Rock wool, Glass wool		
	Floor purlins		C-shaped steel	Rectangular tube		
	Floor beam		C-shaped steel	Rectangular tube, hot-rolled steel H		
	Ceiling		PVC ceiling	Plaster ceiling, calcium silicate board, gypsum board		

ADIYH-V05

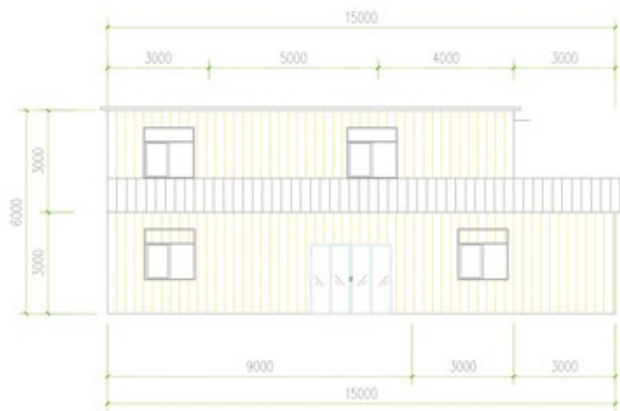
Light Steel Villa



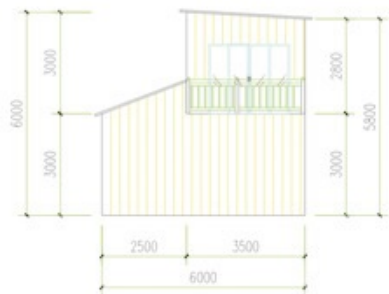
Part

Light Steel Villa

Elevation



Front Elevation

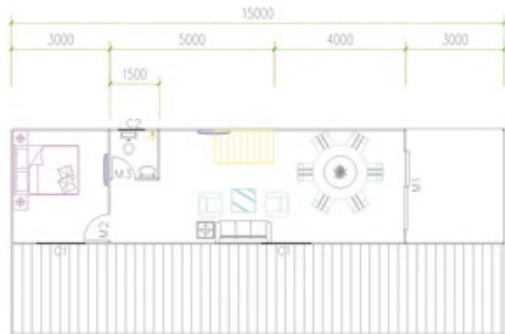


Right Elevation

layout



Ground Floor Plan



First Floor Plan

SPECIFICATIONS

External Length		15000mm				
External Width		6000mm				
Height		3000m +3000m				
Area		142.5m²				
Bedroom	Parlor	Dining room	Kitchen	Toilet	Study	Porch
1	1	1	1	1	1	1
Name	Standard material		Optional materials			
Roof	Decolative	Asphalt shingles	Color steel glazed tile, metal color stone tile, resin tile			
	Waterproof layer	Color steel plate	Breathable film, felt paper, PE material			
	Insulation	EPS sandwich panel	Rock wool, Glass wool			
	Purlins	Rectangular tube	C-shaped steel			
	Roof truss	Rectangular tube	C-shaped steel, hot-rolled steel H			
Wall	Ceiling	PVC ceiling	Plaster ceiling, calcium silicate board, gypsum board			
	Decolative	PVC ceiling	PU metal cladding, calcium silicate board			
	Insulation	EPS sandwich panel	PU sandwich panels, sandwich panel, glass wool			
	Ring beam	Rectangular tube	C-shaped steel			
Floor	Steel column	Rectangular tube	Hot-rolled steel H			
	Decolative	PVC ceiling	Carpet, laminate flooring, solid wood flooring			
	Floor	Plywood	Calcium silicate board, OSB board, sandwich panel			
	Insulation layer	EPS sandwich panel	Rock wool, Glass wool			
	Floor purlins	C-shaped steel	Rectangular tube			
	Floor beam	C-shaped steel	Rectangular tube, hot-rolled steel H			
	Ceiling	PVC ceiling	Plaster ceiling, calcium silicate board, gypsum board			

ADIYH-V06

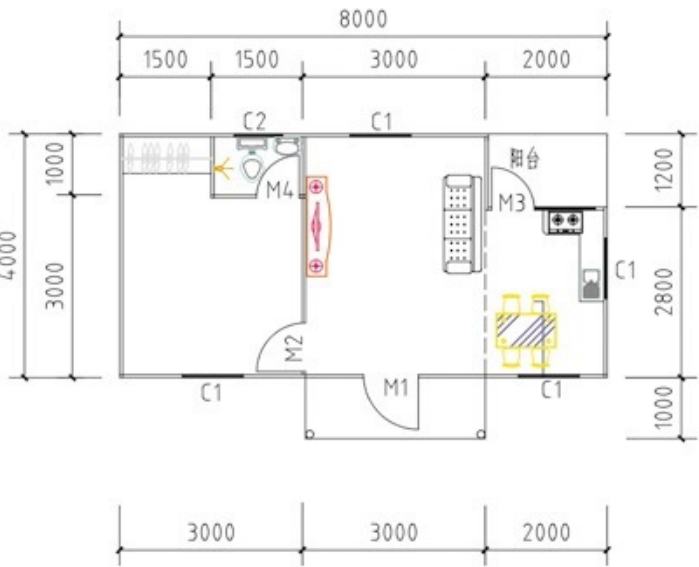
Light Steel Villa



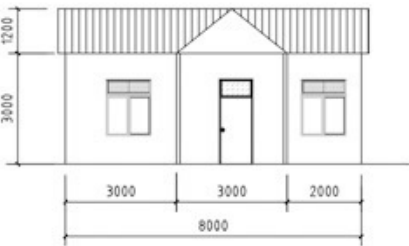
Solar power supply system

Light Steel Villa

Elevation



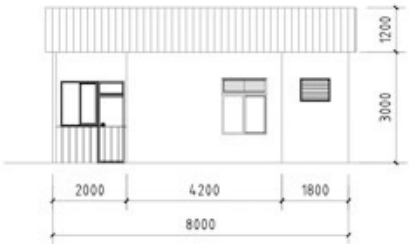
layout



Front Elevation



Left Elevation



Back Elevation



Right Elevation

SPECIFICATIONS

External Length		8000mm				
External Width		4000mm				
Height		3000mm+1200mm				
Area		35m²				
Bedroom	Parlor	Dining room	Kitchen	Toilet	Study	Porch
1	1	1	1	1		1
Roof	Name	Standard material		Optional materials		
	Solar energy	Photovoltaic panels				
	Decorative	Asphalt shingles		Color steel glazed tile, metal color stone tile, resin tile		
	Waterproof layer	Color steel plate		Breathable film, felt paper, PE material		
	Insulation	EPS sandwich panel		Rock wool, Glass wool		
	Purlins	Rectangular tube		C-shaped steel		
	Roof truss	Rectangular tube		C-shaped steel, hot-rolled steel H		
Wall	Ceiling	PVC ceiling		Plaster ceiling, calcium silicate board, gypsum board		
	Decorative	PVC ceiling		PU metal cladding, calcium silicate board		
	Insulation	EPS sandwich panel		Polyurethane sandwich panels, sandwich panel, glass wool		
	Ring beam	Rectangular tube		C-shaped steel		
	Steel column	Rectangular tube		Hot-rolled steel H		

Light Steel Villa



The image displays a set of architectural drawings for a house, including a floor plan and four elevations.

Floor Plan: The layout shows a rectangular building with overall dimensions of 16,000 mm in width and 8,000 mm in depth. The plan is divided into several areas: a dining area with four tables and chairs, a kitchen area with a sink and stove, a living area with a sofa and coffee table, and a bedroom with a bed. The plan also shows a bathroom, a hallway, and a staircase.

Elevations: The four elevations show the exterior of the house. The front elevation features a gabled roof, a large window, and a small porch. The back elevation shows a gabled roof, a large window, and a small porch. The left elevation shows a gabled roof, a large window, and a small porch. The right elevation shows a gabled roof, a large window, and a small porch.

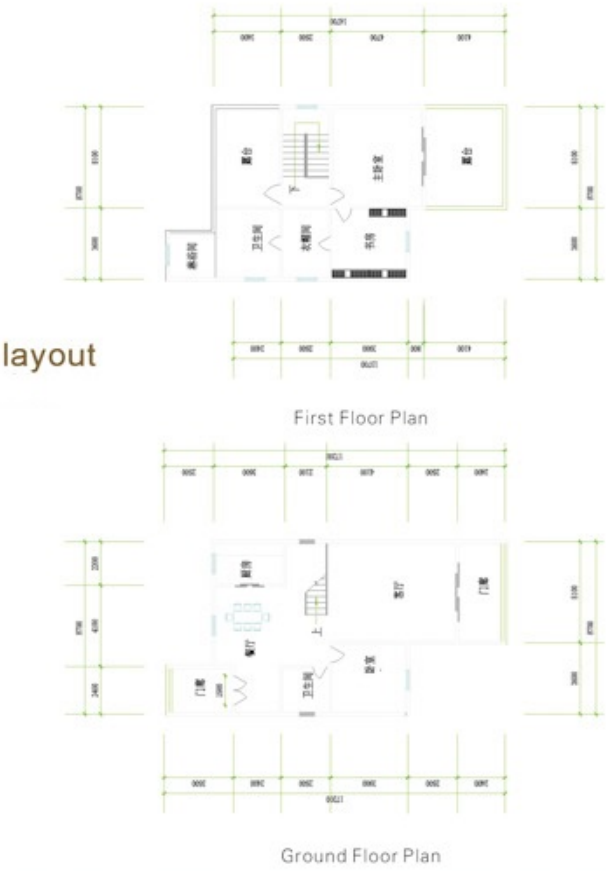
External Length		16000mm				
External Width		8000mm				
Height		3000m+1200m				
Area		142.5m ²				
Bedroom	Parlor	Dining room	Kitchen	Toilet	Study	Porch
	2			1		1
Name	Standard material			Optional materials		
Roof	Decolative	Asphalt shingles		Color steel glazed tile, metal color stone tile, resin tile		
	Waterproof layer	Color steel plate		Breathable film, felt paper, PE material		
	Insulation	EPS sandwich panel		Rock wool, Glass wool		
	Purlins	Rectangular tube		C-shaped steel		
	Roof truss	Rectangular tube		C-shaped steel, hot-rolled steel H		
	Ceiling	PVC ceiling		Plaster ceiling, calcium silicate board, gypsum board		
Wall	Decolative	PVC ceiling		PU metal cladding, calcium silicate board		
	Insulation	EPS sandwich panel		Pum sand which panels, sandwich panel, glass wool		
	Ring beam	Rectangular tube		C-shaped steel		
	Steel column	Rectangular tube		Hot-rolled steel H		

ADIYH-V08

Light Steel Villa



Light Steel Villa



ADIYH-V09



Light Steel Villa



Light Steel Villa



Container House



Winhouse disassembled container, the same specification containers can be assembled together, which can quickly achieve completion of the site buildings. Apply field can be develop to site office, dormitory, school, city store, entertainment room, theatre etc.

Product introduction

Container mobile house, also known as camping house, container apartment housing, is adopt container technology(also can adopt market standard steel material as main skeleton). Taking sandwich panel as wall panel. standard standard modulus as space assembled. The components are use welded and bolts to combination. Bottom use fireproof and humid proof, abrasion resistant fiber material. At the same time, can use a variety of porcelain as surface decoration. Making the inside space neat and and bright. It is a new concept of green economic type container house. Conveniently quick lifting and transport, to achieve universal standardization of temporary buildings. Establish environmental protection and energy saving ,efficient buildings concept. Make the temporary houses into the field of developing ,manufacturing, and supporting supply, can be stocked and recycling.

Feature

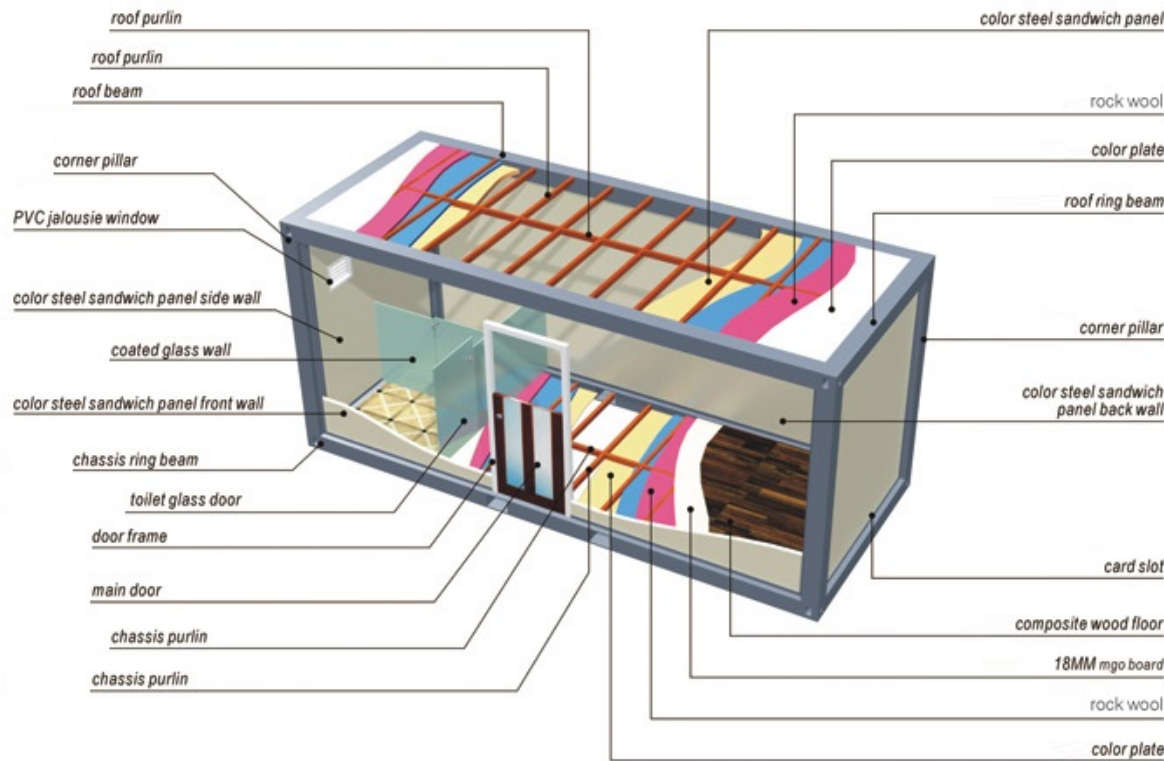
- 1、Activity: removable and repeated use
- 2、Quick assembly: short finish time, without basement
- 3、Safety: light steel structure, anti-typhoon, anti-earthquake.
- 4、Durability: corrosion resistance, acid resistance, not easy to rust, the life time is above 20 years.
- 5、Noise and heat insulation: air break thermal design, good for noise and heat.
- 6、Low cost, high quality
- 7、Can be stacked for three floors.

Application

- 1、Booth, canteen, mobile store, mobile toilet
- 2、Motels, hotels, restaurants and civilian residence field etc.
- 3、Project construction office and residence
- 4、Emergency disaster rescue temporary command center, hospitals, canteens, schools
- 5、Industry temporary office, warehouse, canteen, equipment control room
- 6、Field and outdoor work industry

M Container

Dissection



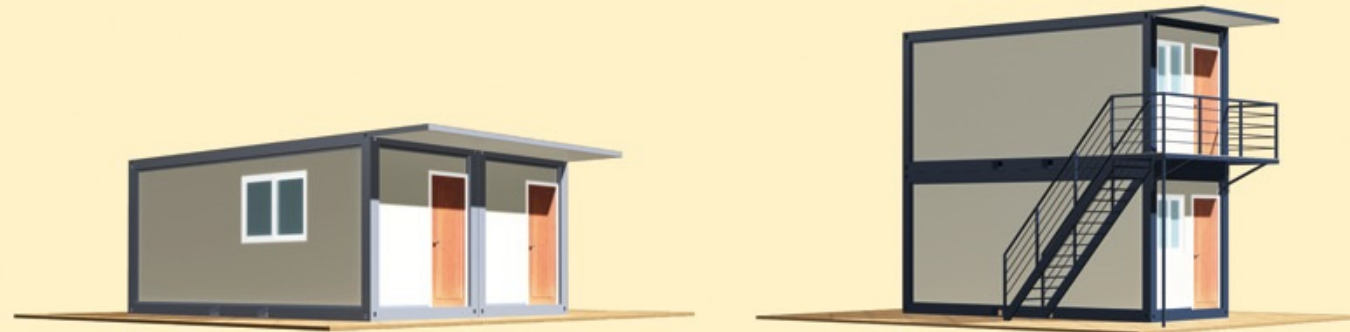
M Container

Indoor Diagram



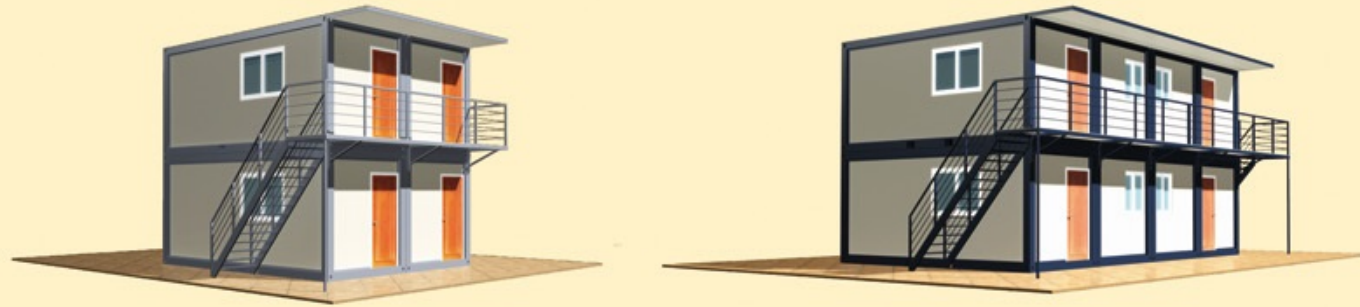
Note: Furniture and decoration accessories are for reference only, internal partitions can be based on actual customer application by the line custom.

Container House



2x1 floor assmebly

1x2 floor assmebly



2x2 floor assmebly

4x2 floor assmebly

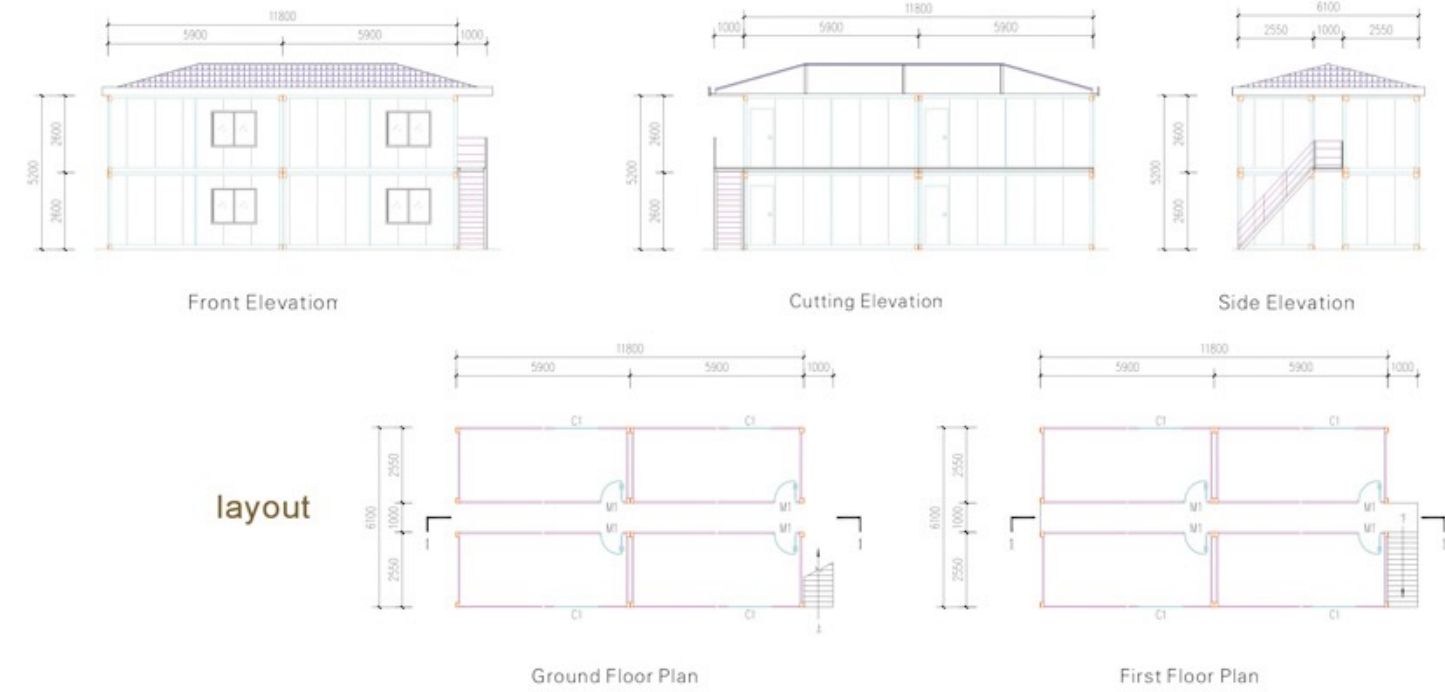
M Container Assembling

M Container Installation Steps

disassembled container, before deliver to the customers, all the main components,window and door,bolts etc have been packed into the small container.Before assembly,open the container,according to the instruction steps to work. Easy and quick assembly, only need 2-3 people, with 3 hours to finish.



ADIYH-M4x2



M Container



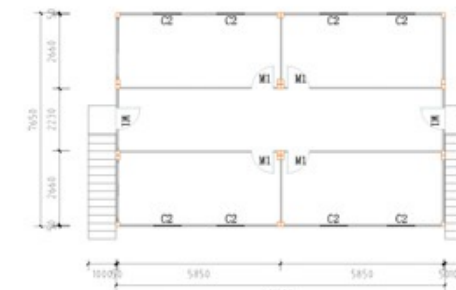
Container House

ADIYH-M01

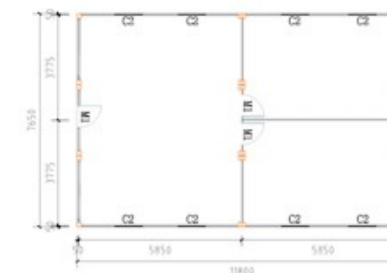
Container House



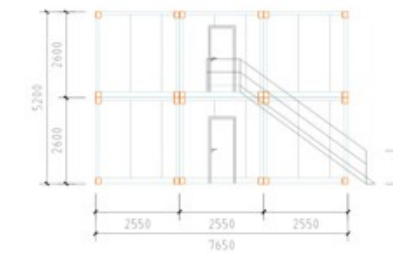
Insight



First Floor Plan



Ground Floor Plan



Front Elevation



Side Elevation

layout

ADIYH-M02

M Container

M Container

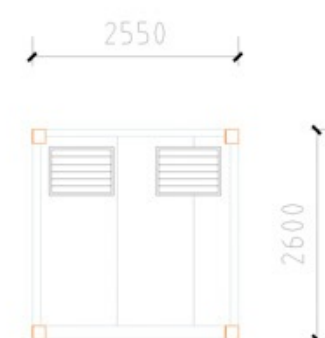
layout



Floor Plan



Front Elevation



Side Elevation



Container House

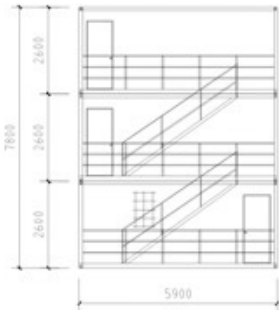
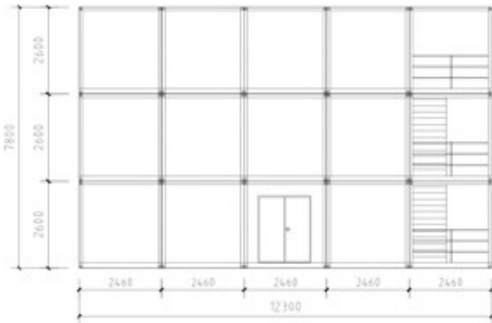
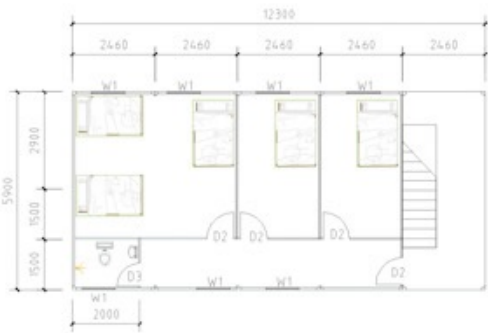
ADIYH-M03

Container House



layout

ADIYH-M04



Floor Plan

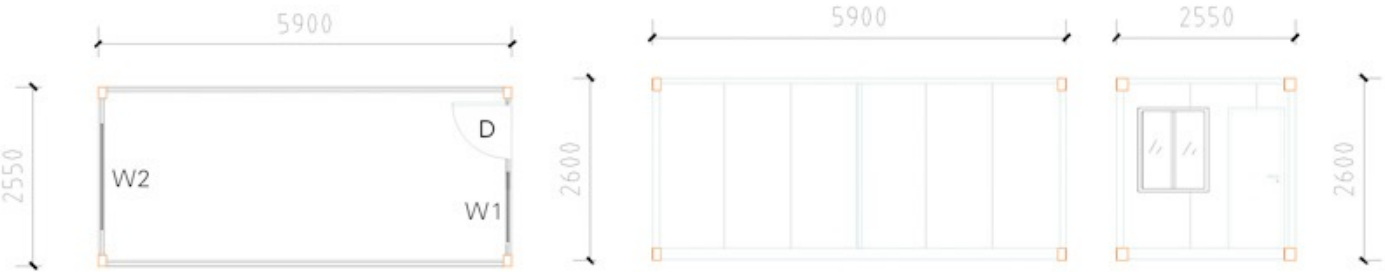
Front Elevation

Side Elevation

M Container

M Container

layout



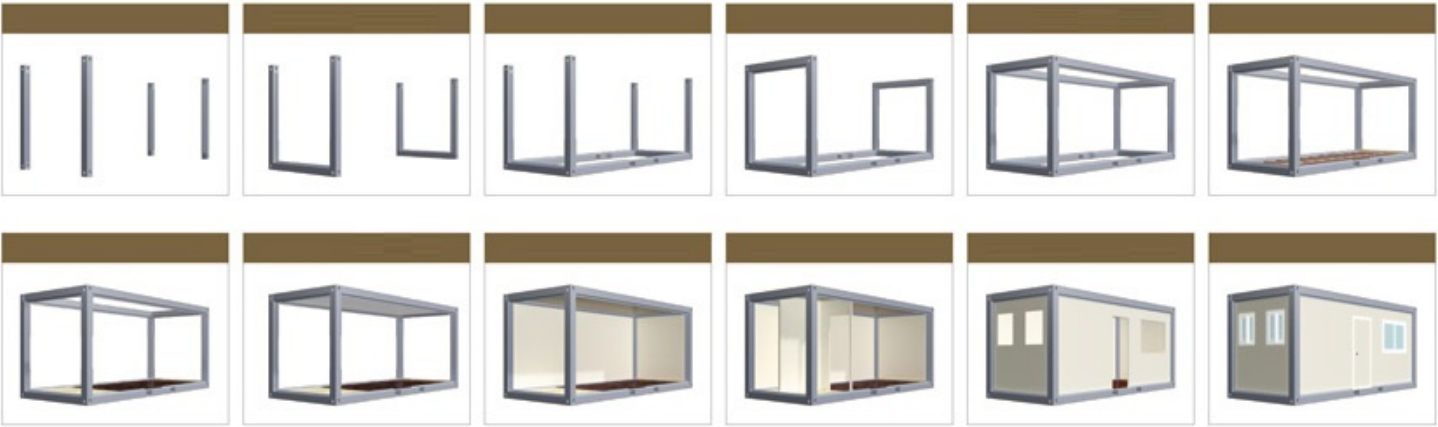
Floor Plan

Front Elevation

Side Elevation



Container House



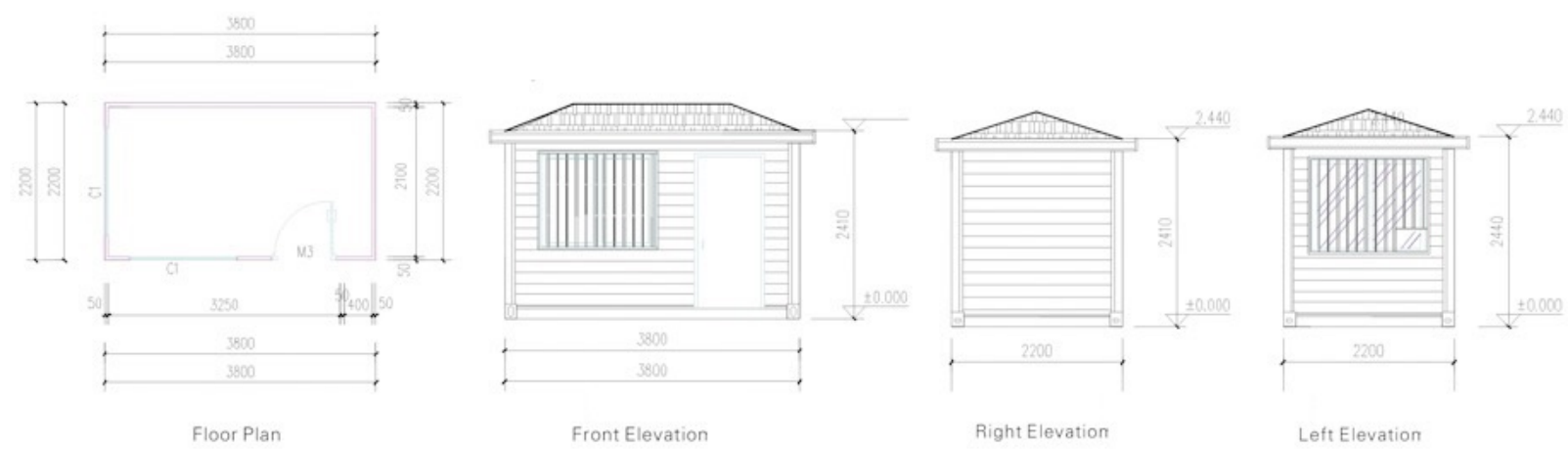
ADIYH-M05

Container House

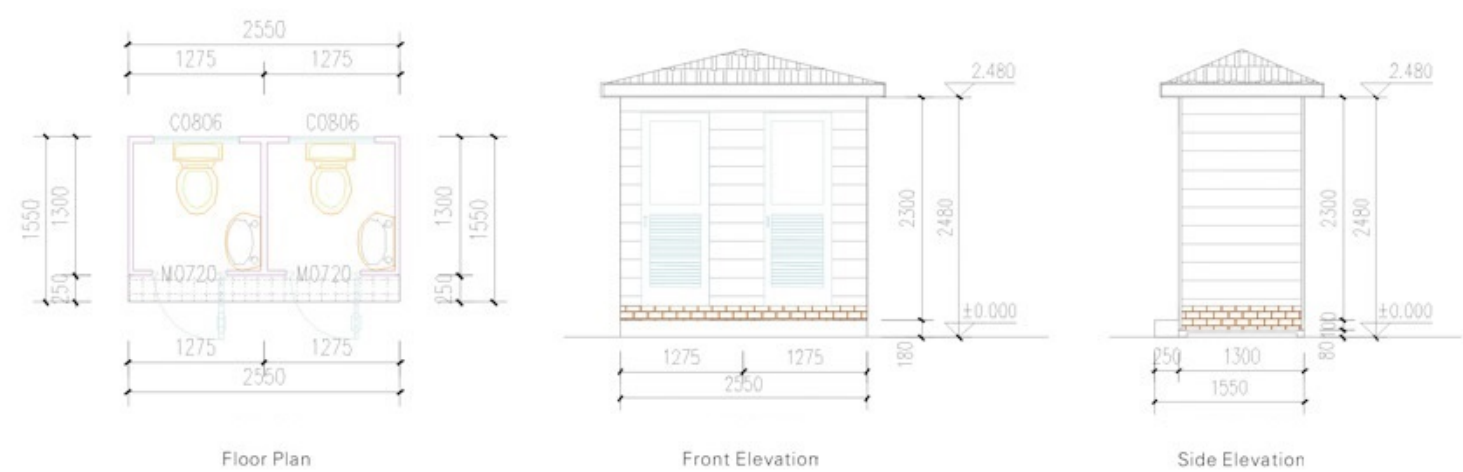


M Container

Plane layout



ADIYH-M06



layout

M Container



Insight

Container House

Container House



Container House



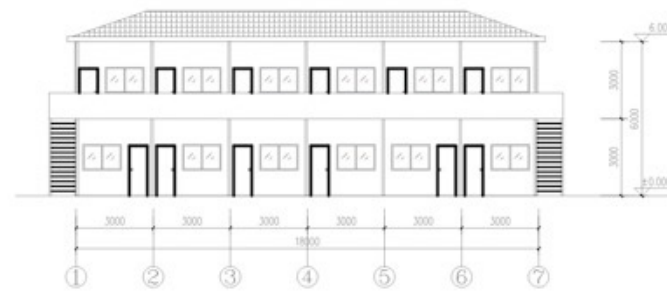
Prefab house



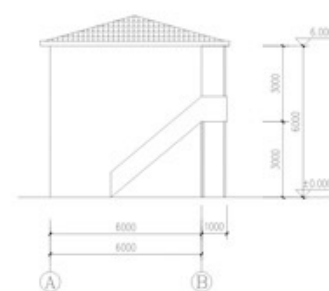
V house

V house

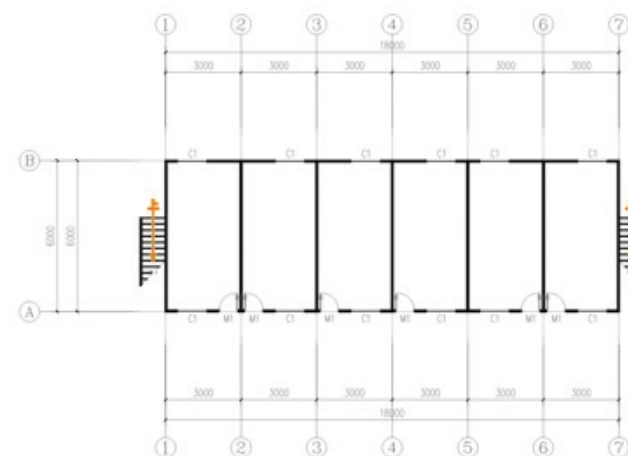
Elevations



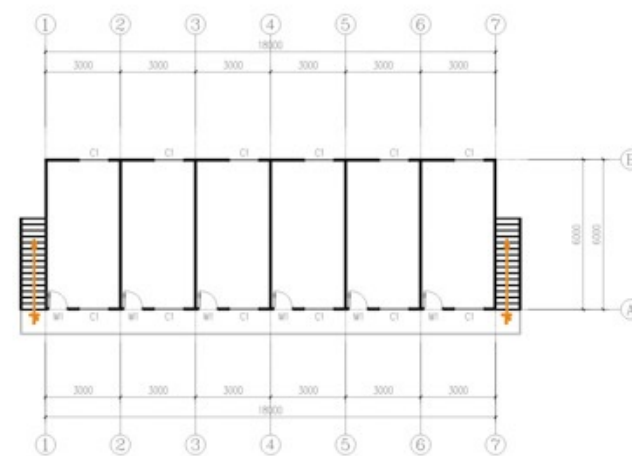
Front Elevation



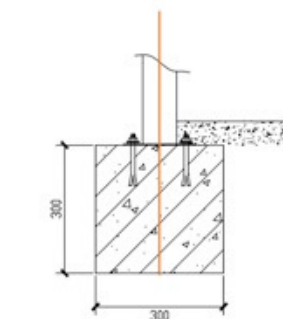
Side Elevation



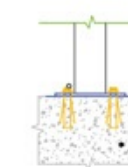
Ground Floor Plan



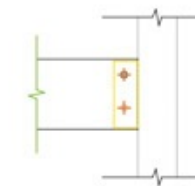
First Floor Plan



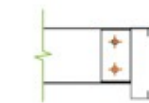
Foundation Cutting Drawing



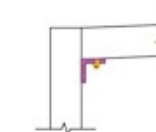
The connection of pillar



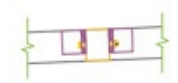
The connection of pillar and transverse beam



The connection of floor transverse beam and purlin



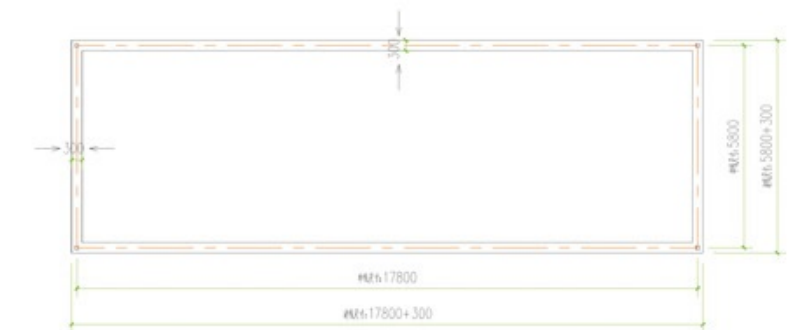
The connection of pillar and roof transverse beam



The connection of roof transverse beam and purlin

V house

Elevations



Foundation Drawing

Prefab house



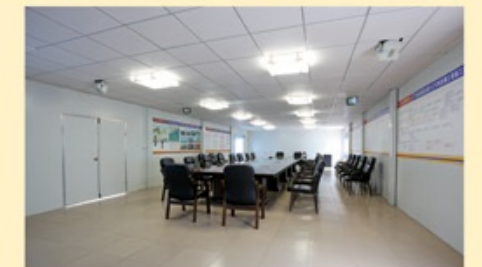
V house — Case



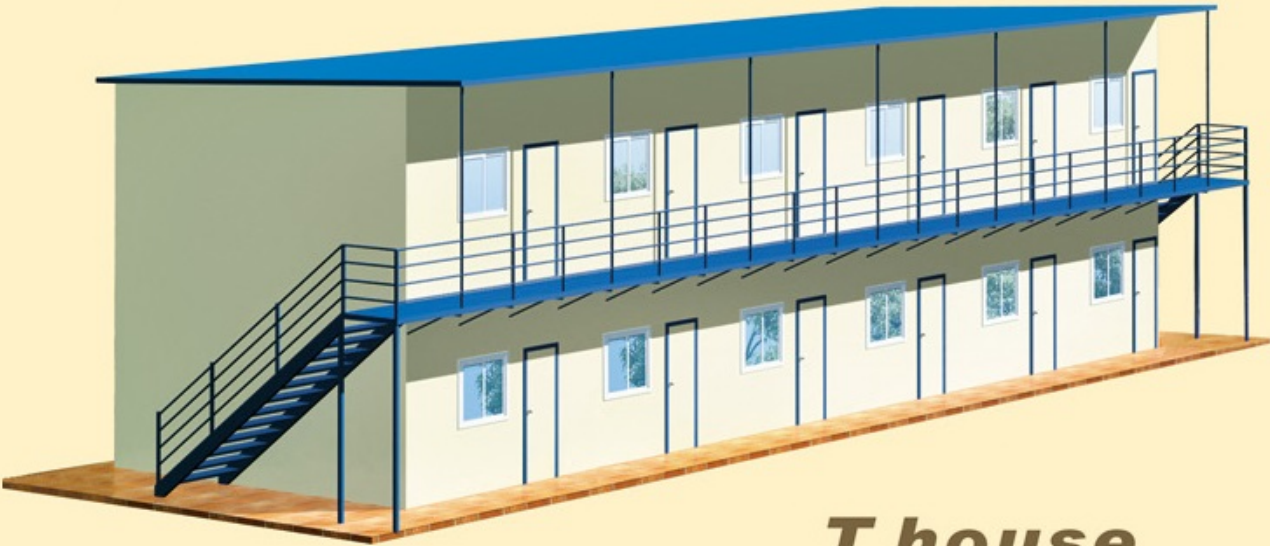
Prefab house



V house



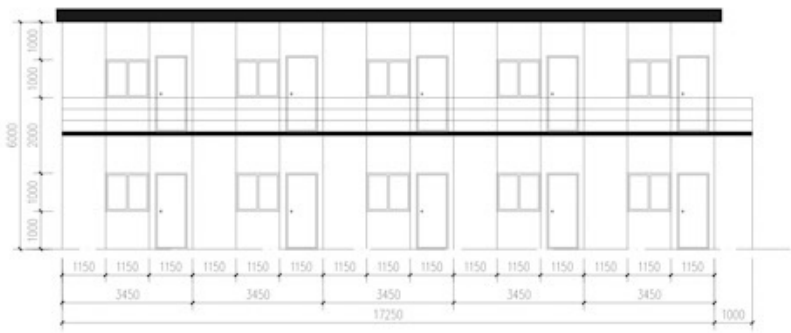
Prefab house



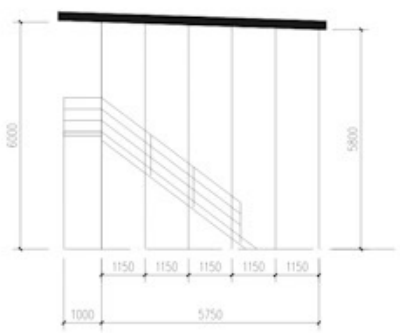
T house

T house

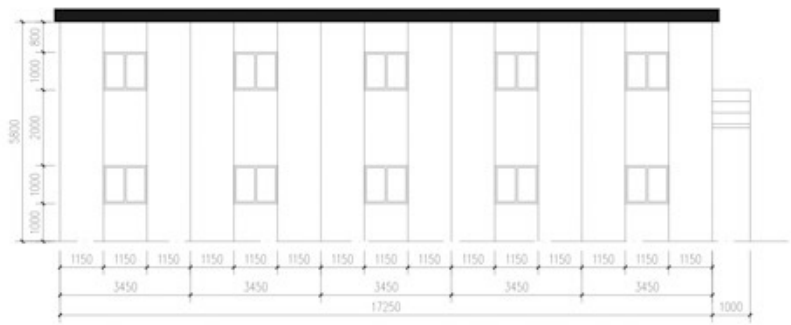
Elevations



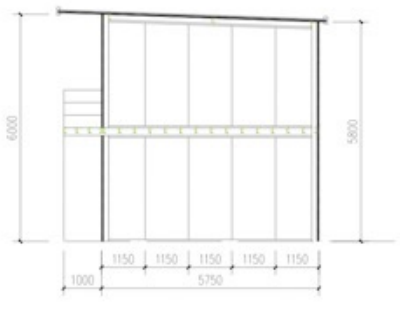
Front Elevation



Side Elevation



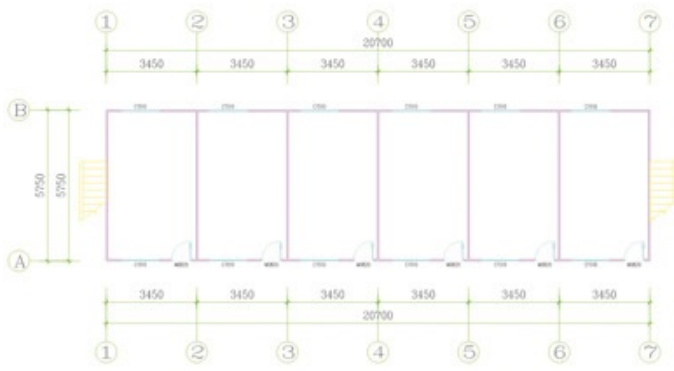
Rear Elevation



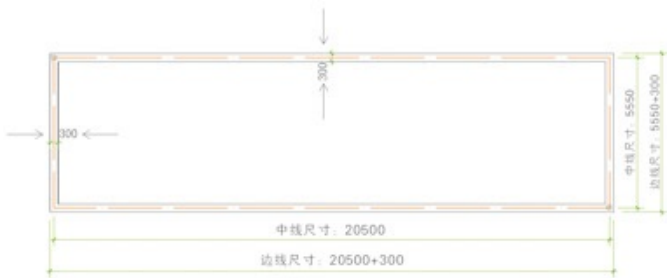
Cutting Elevation

T house

Elevations



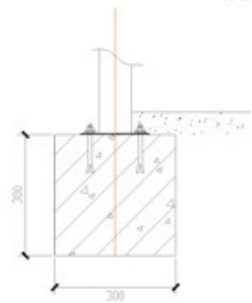
Ground Floor Plan



Foundation Drawing



First Floor Plan



Foundation Cutting Drawing

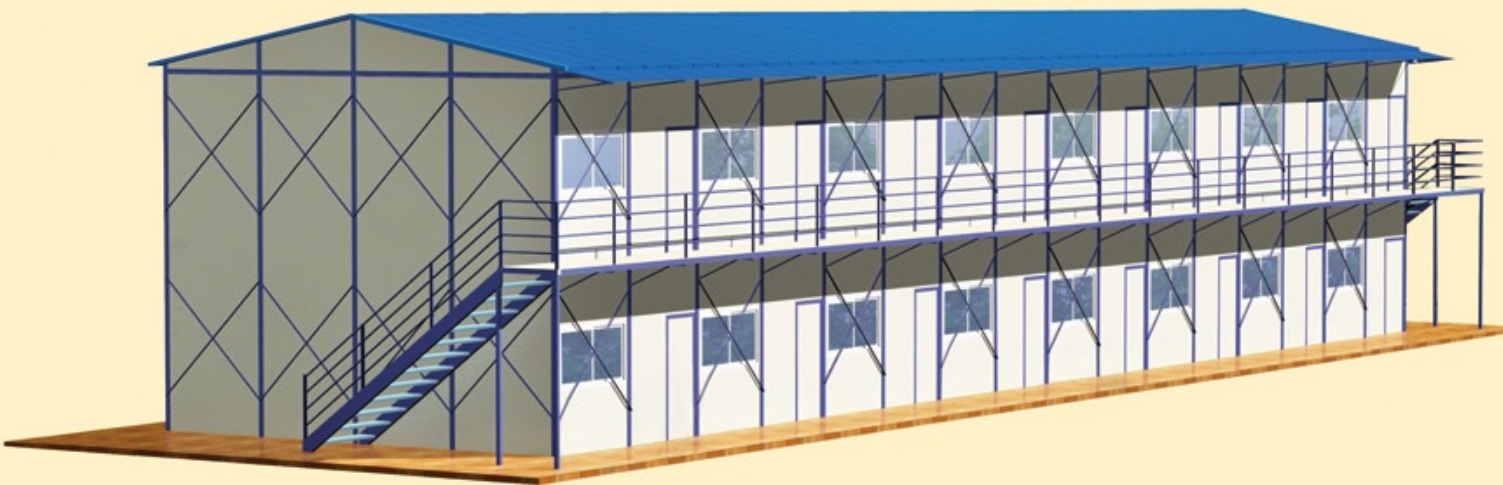
Prefab house



T house

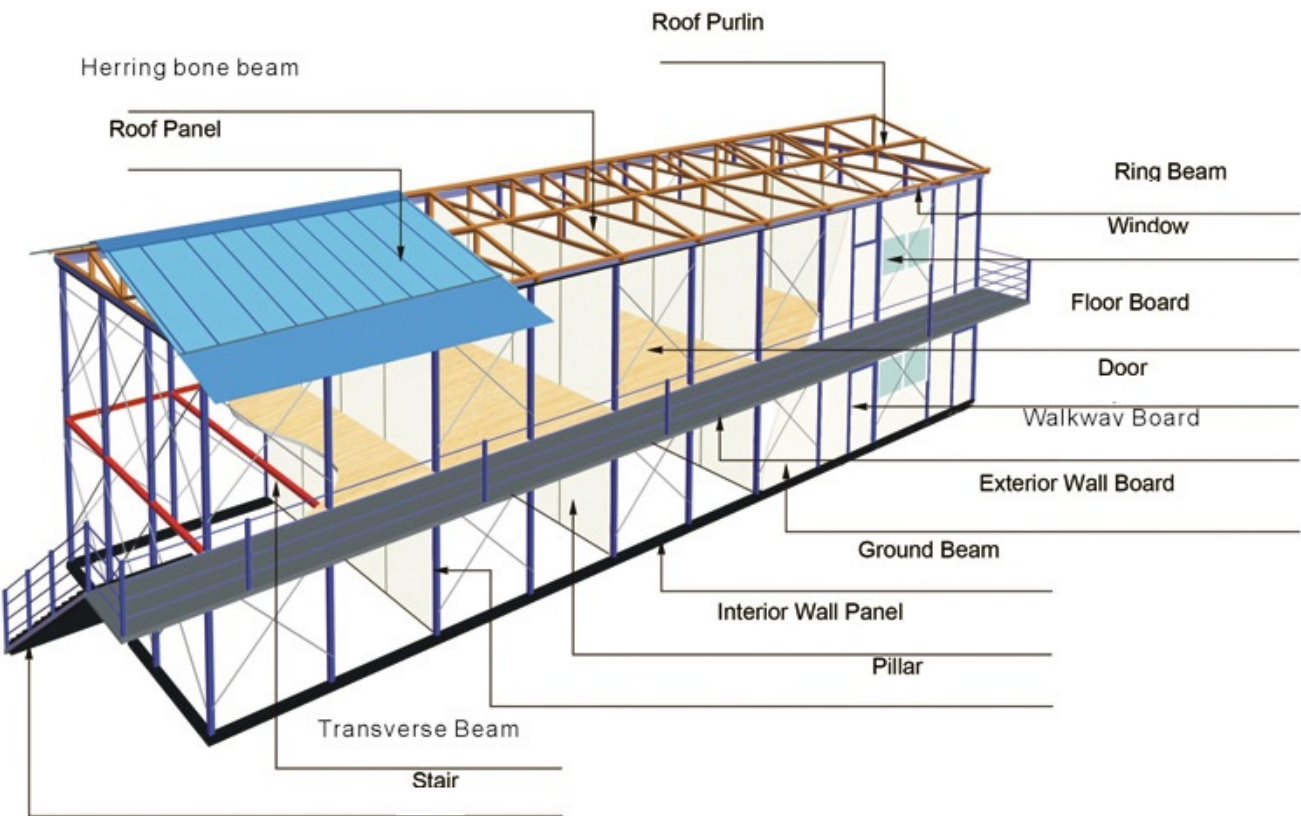


Prefab house



K house

K house — Dissection



K house — Type

One Floor

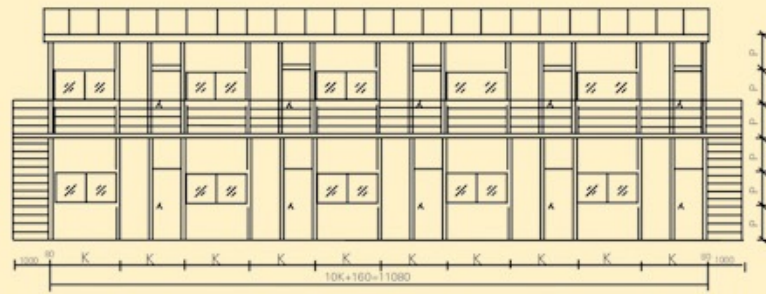


Two-Floor

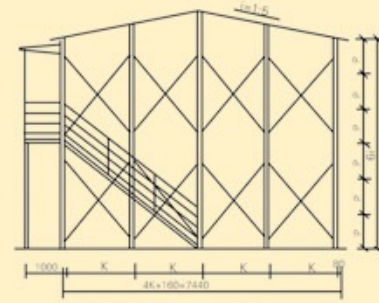


Three-Floor

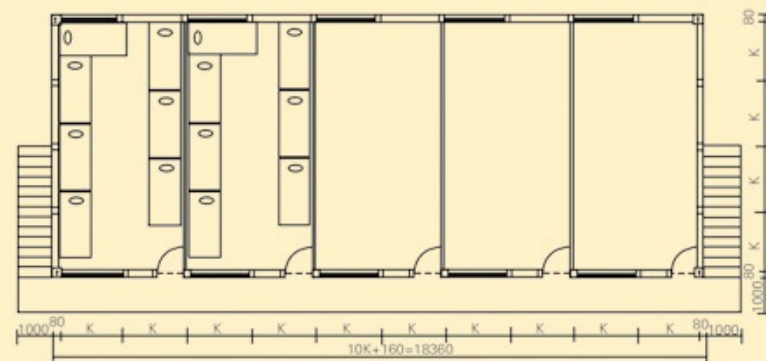
Prefab house



Front elevation

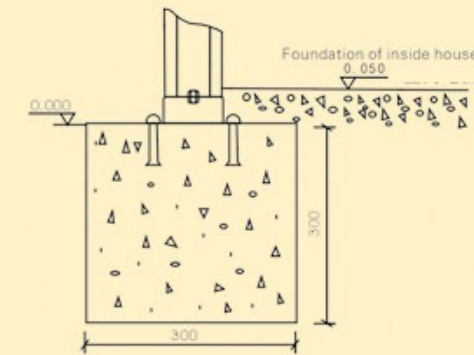


Side elevation

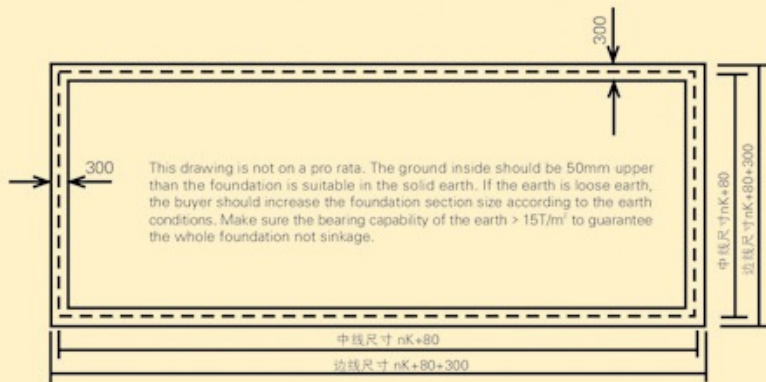


4KX10KX6P

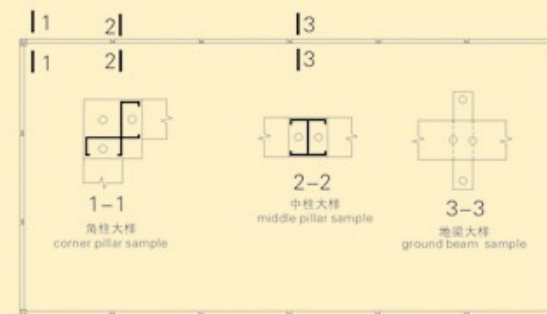
plan drawing



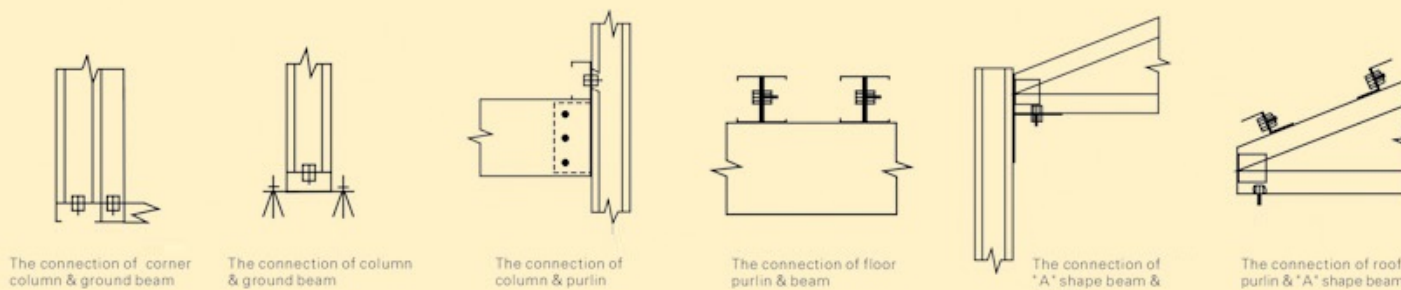
C20 foundation cutting drawing



K x K prefab house foundation drawing



The connection view drawing of ground beam column



The connection of corner column & ground beam

The connection of column & ground beam

The connection of column & purlin

The connection of floor purlin & beam

The connection of 'A' shape beam & column

The connection of roof purlin & 'A' shape beam

K house Plane Elevations

K house Modulus area of table

		(3P)			(6P)			(9P)		
		3K	4K	5K	3K	4K	5K	3K	4K	5K
4	K	45.53	59.07	72.61	103.79	130.87	157.95	176.84	217.46	258.08
5	K	56.67	73.52	90.38	126.97	160.68	194.39	212.07	262.63	313.19
6	K	67.81	87.98	108.14	150.16	190.49	230.82	247.31	307.81	368.30
7	K	78.95	102.43	125.90	173.35	220.30	267.26	282.54	352.98	423.41
8	K	90.09	116.88	143.67	196.53	250.11	303.69	317.78	398.15	478.52
9	K	101.22	131.33	161.43	219.72	279.93	340.13	353.01	443.32	533.63
10	K	112.36	145.78	179.19	242.91	309.74	376.57	388.25	488.50	588.74
11	K	123.50	160.23	196.96	266.09	339.55	413.00	423.48	533.67	643.85
12	K	134.64	174.68	214.72	289.28	369.36	449.44	458.72	578.84	698.96
13	K	145.78	189.13	232.48	312.47	399.17	485.88	493.96	624.01	754.07
14	K	156.92	203.58	250.25	335.65	428.98	522.31	529.19	669.18	809.18
15	K	168.06	218.03	268.01	358.84	458.79	558.75	564.43	714.36	864.29
16	K	179.19	232.48	285.77	382.03	488.61	595.19	599.66	759.53	919.40
17	K	190.33	246.93	303.54	405.21	518.42	631.62	634.90	804.70	974.51
18	K	201.47	261.38	321.30	428.40	548.23	668.06	670.13	849.87	1029.62
19	K	212.61	275.84	339.06	451.59	578.04	704.49	705.37	895.05	1084.73
20	K	223.75	290.29	356.83	474.77	607.85	740.93	740.60	940.22	1139.84
21	K	234.89	304.74	374.59	497.96	637.66	777.37	775.84	985.39	1194.95
22	K	246.02	319.19	392.35	521.15	667.48	813.08	811.07	1030.56	1250.06
23	K	257.16	333.64	410.12	544.33	697.29	850.24	846.31	1075.74	1305.17
24	K	268.30	348.09	427.88	567.52	727.10	886.68	881.54	1120.91	1360.28
25	K	279.44	362.54	445.64	590.71	756.91	923.11	916.78	1166.08	1415.38
26	K	290.58	376.99	463.40	613.90	786.72	959.55	952.01	1211.25	1470.49
27	K	301.72	391.44	481.17	637.08	816.53	995.99	987.25	1256.43	1525.60
28	K	312.85	405.89	498.93	660.27	846.35	1032.42	1022.48	1301.60	1580.71
29	K	323.99	420.34	516.69	683.46	876.16	1068.86	1057.72	1346.77	1635.82
30	K	335.13	434.79	534.46	706.64	905.97	1105.30	1092.95	1391.94	1690.93

Remark:

The two floors' house has two pcs stair in standard. Each side of gable wall has one. The stair's area is 4.5m²/pc. The corner stair (special for three floors house) is 16.0m² / pc. The area will increase or reduce according the stair's quantity.

The regular of area counting way: 1.The area of room: external wall length x external wall width x number of layers (Unit: SQM)
2.Standard stair: 4.5m²/pc, corner stair(special for three floors house): 16m²/pc
3.The area of canopy shall be one half the horizontal project areas.
4.The area of walkway shall be calculated by according the project area.
5.It shall be not to calculated area of canopy when total area not extending 200mm outside the walls.
6.Total area= (1) + (2) + (3) + (4)
7.Excepting other specially specified, the engineering volume and adjusted settlement shall be calculated according to the above mentioned format.

Description: The above regulations on area are also applicable for flat roof house

Prefab house



K house



Prefab house

Frame structure of materials



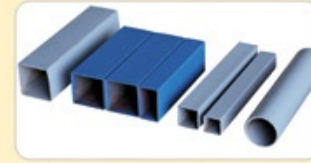
Slot type steel



C type steel



Heavy steel



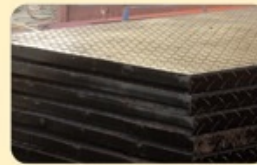
Supporting steel plate



I type steel



Groove steel groove



Walkway Board



Herring bone steel



Slot type steel



Bearing plate



Supporting steel plate

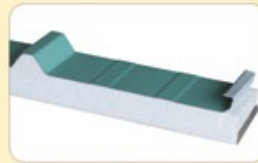


Lock and accessories

Encaustic tile of materials



840 Type Board



820 Type Board



Glazed tile



Compartment floor

Doors and windows



Plastic steel window



Plastic steel window



Window shades



Standard doors

Ceiling of materials



Aluminum ceiling



Gypsum board ceiling

Material

Specification

Number	Component	V House		K House		T House	
		1 Floor	2 Floor	1 Floor	2 Floor	1 Floor	2 Floor
1	地梁 Ground beam			8#C型钢(黑色) 8#C steel(Black)	8#C型钢(黑色) 8#C steel(Black)		
2	Exterior wall pillar	80mmx80mm Square tube (Gray white)	100mmx100mm Square tube (Gray white) 80mmx80mm Square tube (Gray white)	Double 8#C Steel (Sky blue)	Double 8#C Steel (Sky blue)	80mmx80mm Square tube (Gray white)	100mmx100mm Square tube (Gray white)
3	Floor transverse beam		Double 18#C Steel (Gray white)		Double 16#C Steel (Iron red)	80mmx80mm Square tube (Gray white)	Double 18#C Steel (Iron red)
4	Floor purlin		12#C Steel (Gray white)		8#C Steel (Iron red)		10#C Steel (Iron red)
5	Ring beam	60mmx80mm Square tube (Gray white)	60mmx80mm Square tube (Gray white)	8#C Steel (Sky blue)	8#C Steel (Sky blue)	60mmx80mm Square tube (Gray white)	60mmx80mm Square tube (Gray white)
6	Roof transverse beam	80mmx80mm Square tube (Gray white)	80mmx80mm Square tube (Gray white)				80mmx80mm Square tube (Gray white)
7	Herringbone beam			8#C Steel+L3# Angle iron (Iron red)	8#C Steel+L3# Angle iron (Iron red)		
8	Roof purlin	60mmx80mm Square tube (Gray white)	60mmx80mm Square tube (Gray white)	30mmx30mm Angle iron (Iron red)	30mmx30mm Angle iron (Iron red)	60mmx80mm Square tube (Gray white)	60mmx80mm Square tube (Gray white)
9	Second floor flooring		15mm Plywood		15mm Plywood		15mm Plywood
10	Roof shape	8#C Steel+ 30mmx 50mmSquare tube (Gray white)	8#C Steel+ 30mmx 50mmSquare tube (Gray white)				
11	Roof tile	75mm Corrugated tile + Glazed tile (Sky blue / Iron red)	75mm Corrugated tile + Glazed tile (Sky blue / Iron red)	20mm PU foam tile (Sky blue)	20mm PU foam tile (Sky blue)	50mm Corrugated tile (Sky blue)	75mm Corrugated tile (Sky blue)
12	Walkway board		3mm Checkered plate (Black)		3mm Checkered plate (Black)		3mm Checkered plate (Black)
13	主梁 beam		16#C Steel (Black)		16#C Steel (Black)		16#C Steel (Black)
14	Exterior wall panel	50mm EPS sandwich panel (White)	50mm EPS sandwich panel (White)	50mm EPS sandwich panel (Ivory white)	50mm EPS sandwich panel (Ivory white)	50mm EPS sandwich panel (White)	50mm EPS sandwich panel (White)
15	Interior wall panel	50mm EPS sandwich panel (White)	50mm EPS sandwich panel (White)	50mm EPS sandwich panel (Ivory white)	50mm EPS sandwich panel (Ivory white)	50mm EPS sandwich panel (White)	50mm EPS sandwich panel (White)
16	门 Door	Composite EPS sandwich panel door (White)	Composite EPS sandwich panel door (White)	Composite EPS sandwich panel door (Ivory white)	Composite EPS sandwich panel door (Ivory white)	Composite EPS sandwich panel door (White)	Composite EPS sandwich panel door (White)
17	Window	PVC Sliding window (White)	PVC Sliding window (White)	PVC Sliding window (White)	PVC Sliding window (White)	PVC Sliding window (White)	PVC Sliding window (White)
18	Roof gutter	Galvanized steel sheet gutter	Galvanized steel sheet gutter				
19	Downspout	100mm Round tube (White)	100mm Round tube (White)				
20	Accessories	Gal. tapping screw, rivet, bolt & sealant	Gal. tapping screw, rivet, bolt & sealant	Gal. tapping screw, rivet, bolt & sealant	Gal. tapping screw, rivet, bolt & sealant	Gal. tapping screw, rivet, bolt & sealant	Gal. tapping screw, rivet, bolt & sealant

Material — Specification

Sandwich panel

MgO sandwich panel is made of the element Mgo, MgCl2 and H2O as well as modifier in a certain percentage. It is a new noncombustible decorative material that is made of stable magnesium cementitious material, reinforced by neutralizing alkaline fiberglass mesh, filled with light weight core material. We apply special technology to combine the MgO board with steel plate to become a compound sandwich panel that is fireproof, waterproof, odorless, non-poisonous, non-frozen, non-rotten, non-broken, stable, noncombustible, light weight, great strength, easy installation, long life span.



Male-Female Joint (with steel strip)

Sandwich panel MGO

Sandwich panel MGO

Sandwich Optional

Sandwich panel MGO

Specifications



Magnesium Panels

MgO: MgO hollow sandwich panel owns the characteristics of fireproof, waterproof, odorless, non-poisonous, non-frozen, non-rotten, non-broken, stable, noncombustible, light weight, great strength, easy installation and long life span even though it is without core materials. Also it can be combined with PU, rock wool and EPS to be used in more situations.



PU Panels

PU: PU is short for polyurethane, which is also called Urethane rubber or spring rubber. The full name is poly-urethane or isocyanate polymer. Polyurethane is elastomer between plastic and rubber with a unique combination of their excellent performances. Characteristics: anti-abrasion, anti-chemical corrosion, strong tension, high elasticity, high press resistance, stable, anti-tearing, anti-radiation, good strength, excellent load bearing and reducing shock on surface, as well as wide range of hardness.



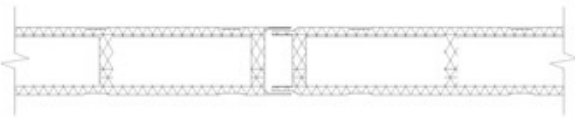
Rock Wool Panels

Rock Wool: rock wool is a kind of mineral wool, which is fluffy, short and thin fibers, made of natural rocks and minerals and other raw materials. Rock wool is inorganic fiber whose main raw material are natural rocks such as basalt, gabbro, dolomite, iron ore, bauxite, melting and fibrosis in high temperature.

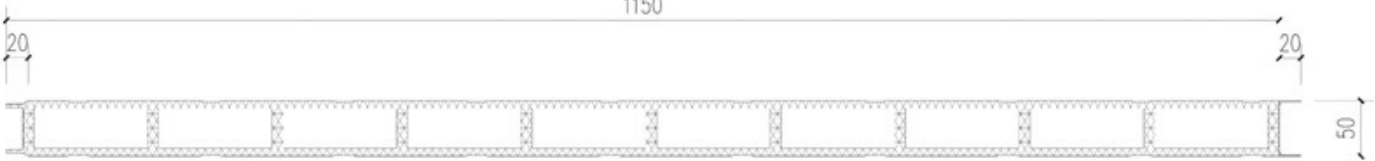


EPS Panels

EPS: EPS (polystyrene) is also called foam board. EPS board is white in color. It is advance thermoformed, then heated and molded with a volatile liquid blowing agent containing polystyrene beads. It has a fine closed cell structure and is mainly used in wall, roof, composite board, the insulation of cold storage, air conditioning, vehicles, vessels, , underfloor heating, decorating carving.



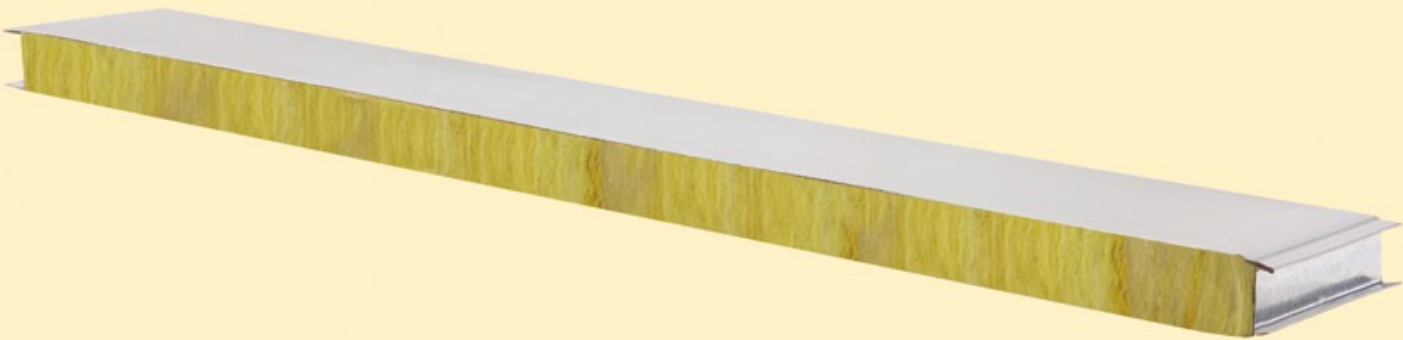
Detail Drawing of Joint
1150



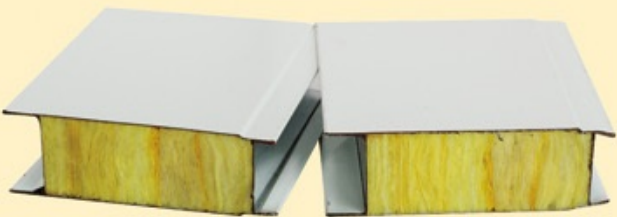
1150 Hollow Magnesium Sandwich Panel

MgO	Mateiral	(mm) Thickness
Surface Board	Metal sheet, Galvanized sheet, Aluminum sheet	0.3-0.6
Bottom Board	Metal sheet, Galvanized sheet, Aluminum	0.3-0.6
Width	950mm、1150mm	
Length	Customized as per required length	
Thickness	50mm、75mm、100mm、150mm、200mm	
Insulated Core	Hollow, Expanded polystyrene (insulated and low cost), Polyurethane (the best insulating material), Rock Wool(insulated and fire-proof)	
Joint Way	Male-female groove	

Sandwich panel



The high mechanical strength and easy formation ability, as well as performances in good decoration and anti-rotten ability, makes steel sandwich panel well-known to the world as new building material. With the advance in science, enhancement in environment protection realization, and improvement in people' s life, it shows that panelized houses is becoming more and more popular in field of construction, electrical appliance, electromechanism, transportation, interior decoration, office facilities, etc. because of it great vitality and market value..



Male-Female Joint (with steel strip)



Male-Female Joint (normal type)

Tongue-and- Groove Color Steel

Tongue-and- Groove Color Steel Sandwich Optional

Tongue-and- Groove Color Steel Specifications



Glass Wool Panels

Glass Wool: glass wool is a kind of glass fiber, which is manmade inorganic fiber. Through fibrosis of the molten glass to become cotton-like material. In chemical composition, it is a kind of glass. The molding is good, bulk density and thermal conductivity are low, heat insulation and sound insulation are excellent, corrosion resistance and chemical performance are stable.



Rock Wool Panels

Rock Wool: rock wool is a kind of mineral wool, which is fluffy, short and thin fibers, made of natural rocks and minerals and other raw materials. Rock wool is inorganic fiber whose main raw material are natural rocks such as basalt, gabbro, dolomite, iron ore, bauxite, melting and fibrosis in high temperature.



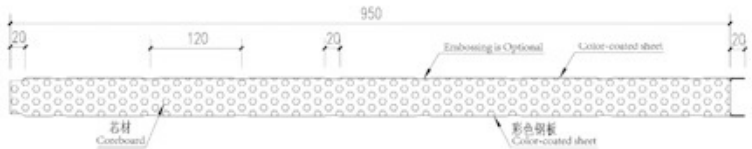
PU Panels

PU: PU is short for polyurethane, which is also called Urethane rubber or spring rubber. The full name is poly-urethane or isocyanate polymer. Polyurethane is elastomer between plastic and rubber with a unique combination of their excellent performances. Characteristics: anti-abrasion, anti-chemical corrosion, strong tension, high elasticity, high press resistance, stable, anti-tearing, anti-radiation, good strength, excellent load bearing and reducing shock on surface, as well as wide range of hardness.

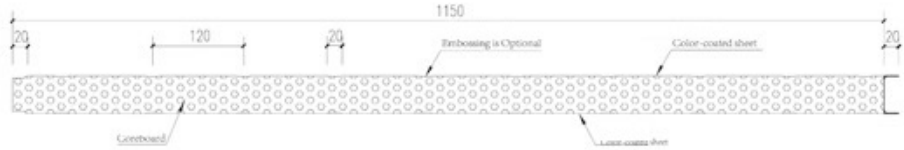


EPS Panels

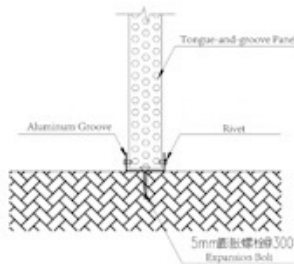
EPS: EPS (polystyrene) is also called foam board. EPS board is white in color. It is advance thermoformed, then heated and molded with a volatile liquid blowing agent containing polystyrene beads. It has a fine closed cell structure and is mainly used in wall, roof, composite board, the insulation of cold storage, air conditioning, vehicles, vessels, , underfloor heating, decorating carving.



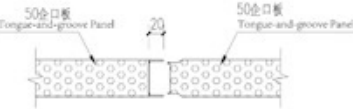
950 Type Composite Sandwich Panel



1150 Type Composite Sandwich Panel



Joint of Ground & Wall



Joint of Tongue-and-groove Gap

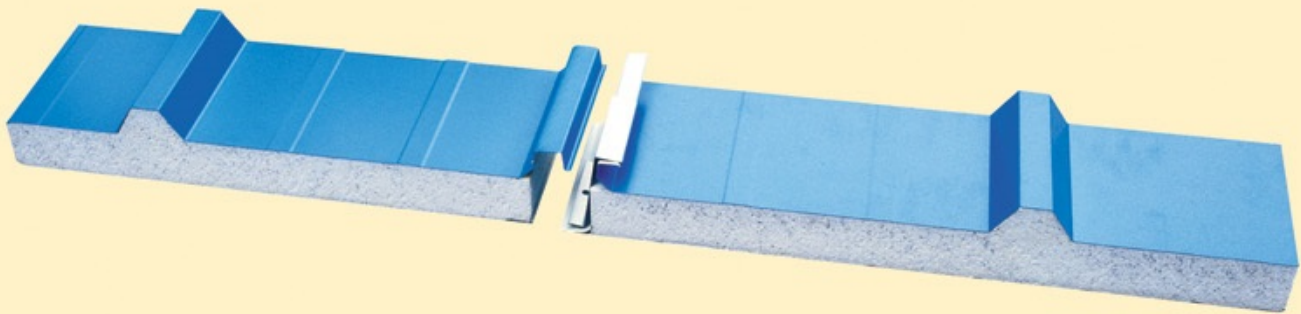
Tongue-and- Groove Color Steel	Mateiral	(mm) Thickness
Surface Board	Metal sheet, Galvanized sheet, Aluminum sheet	0.3—0.6
Bottom Board	Metal sheet, Galvanized sheet, Aluminum sheet	0.3—0.6
Width	950mm, 1150mm	
Length	Customized as per required length	
Thickness	50mm—200mm	
Insulated Core	EPS foam (insulated and low cost), polyurethane(the best insulating material), Rock Wool (insulated and fire-proof), glass wool (insulated and fire-proof)	
Joint Way	Male-female groove	

Sandwich panel



Corrugated Color Steel

Tongue-and-Groove sandwich panel is the sandwich panel that contains tongue and groove by putting into each other tightly to form a firm structure. The connection can be in two ways: one is drilling on the panel and jointing with bolts and nuts, the other is opening groove on the panel and connecting with bolts. There are several kinds of tongue-and-groove sandwich panel like MgO board, rock wool steel sandwich panel, EPS steel sandwich panel, PU steel sandwich panel.



Nip Type Joint

Corrugated Color Steel — Sandwich Optional

Corrugated Color Steel — Specifications



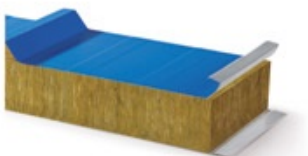
Glass Wool Panels

Glass Wool: glass wool is a kind of glass fiber, which is manmade inorganic fiber. Through fibrosis of the molten glass to become cotton-like material. In chemical composition, it is a kind of glass. The molding is good, bulk density and thermal conductivity are low, heat insulation and sound insulation are excellent, corrosion resistance and chemical performance are stable.



PU Panels

PU: PU is short for polyurethane, which is also called Urethane rubber or spring rubber. The full name is poly-urethane or isocyanate polymer. Polyurethane is elastomer between plastic and rubber with a unique combination of their excellent performances.
Characteristics: anti-abrasion, anti-chemical corrosion, strong tension, high elasticity, high press resistance, stable, anti-tearing, anti-radiation, good strength, excellent load bearing and reducing shock on surface, as well as wide range of hardness.



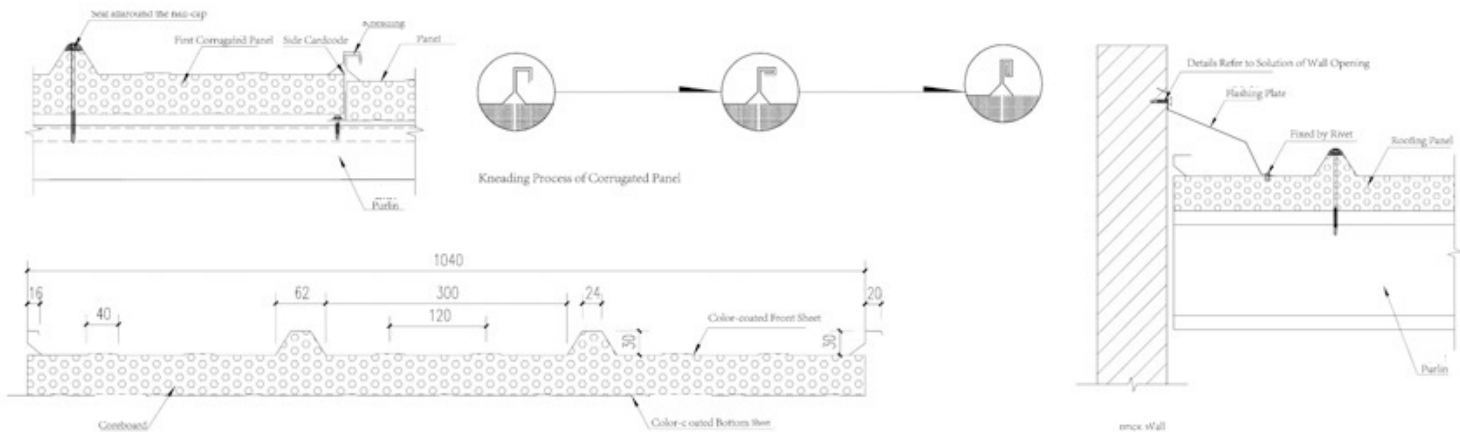
Rock Wool Panels

Rock Wool: rock wool is a kind of mineral wool, which is fluffy, short and thin fibers, made of natural rocks and minerals and other raw materials. Rock wool is inorganic fiber whose main raw material are natural rocks such as basalt, gabbro, dolomite, iron ore, bauxite, melting and fibrosis in high temperature.



EPS Panels

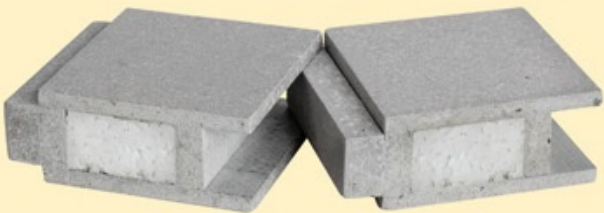
EPS: EPS (polystyrene) is also called foam board. EPS board is white in color. It is advance thermoformed, then heated and molded with a volatile liquid blowing agent containing polystyrene beads. It has a fine closed cell structure and is mainly used in wall, roof, composite board, the insulation of cold storage, air conditioning, vehicles, vessels, underfloor heating, decorating carving.



Corrugated Color Steel	Mateiral	Thickness
Surface Board	Metal sheet, Galvanized sheet, Aluminum sheet	0.3-0.6
Bottom Board	metal sheet, galvanized sheet, aluminum sheet/paper, PVC	0.3-0.6
Width	Fiber Type: 950mm Foam Type: 1040mm	
Length	Customized as per required length	
Thickness	30mm-200mm	
Insulated Core	EPS foam (insulated and low cost), Polyurethane(the best insulating material), Rock Wool (insulated and fire-proof), Glass wool (insulated and fire-proof)	
Joint Way	Nip type	

Sandwich Cement panel

Cement sandwich panel is a new type of construction material we develop. It is of good strength, large size and light weight. And it can be fireproof and waterproof. Moreover, it owns some characteristics that other sandwich panels do not have, e.g.: little contraction, great strength, easy to be painted and decorated, load bearing. The above advantages enable it to be used as wall of high class building like villas.



Edge Sealing of Fiber Cement Board

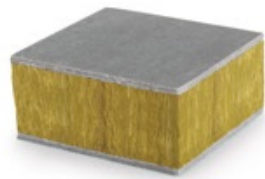
Tongue-and- Groove Color Steel ——— Sandwich Optional

Tongue-and- Groove Color Steel ——— Specifications



PU Panels

PU: PU is short for polyurethane, which is also called Urethane rubber or spring rubber. The full name is poly-urethane or isocyanate polymer. Polyurethane is elastomer between plastic and rubber with a unique combination of their excellent performances.
Characteristics: anti-abrasion, anti-chemical corrosion, strong tension, high elasticity, high press resistance, stable, anti-tearing, anti-radiation, good strength, excellent load bearing and reducing shock on surface, as well as wide range of hardness.



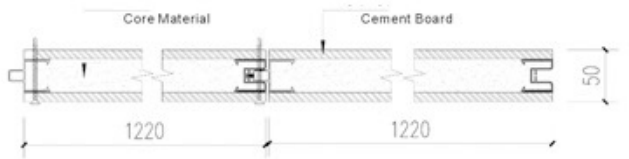
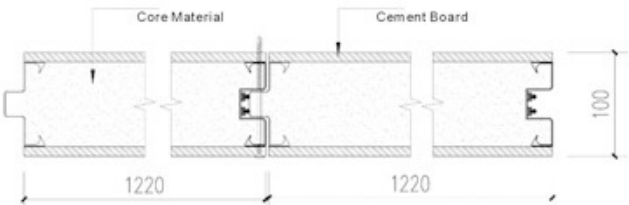
Rock Wool Panels

Rock Wool: rock wool is a kind of mineral wool, which is fluffy, short and thin fibers, made of natural rocks and minerals and other raw materials. Rock wool is inorganic fiber whose main raw material are natural rocks such as basalt, gabbro, dolomite, iron ore, bauxite, melting and fibrosis in high temperature.

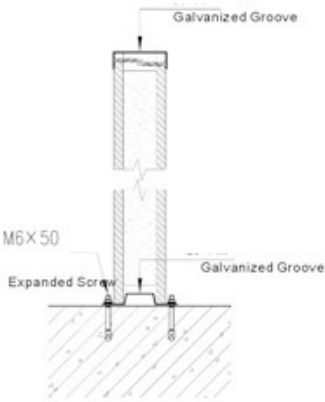


EPS Panels

EPS: EPS (polystyrene) is also called foam board. EPS board is white in color. It is advance thermoformed, then heated and molded with a volatile liquid blowing agent containing polystyrene beads. It has a fine closed cell structure and is mainly used in wall, roof, composite board, the insulation of cold storage, air conditioning, vehicles, vessels, underfloor heating, decorating carving.



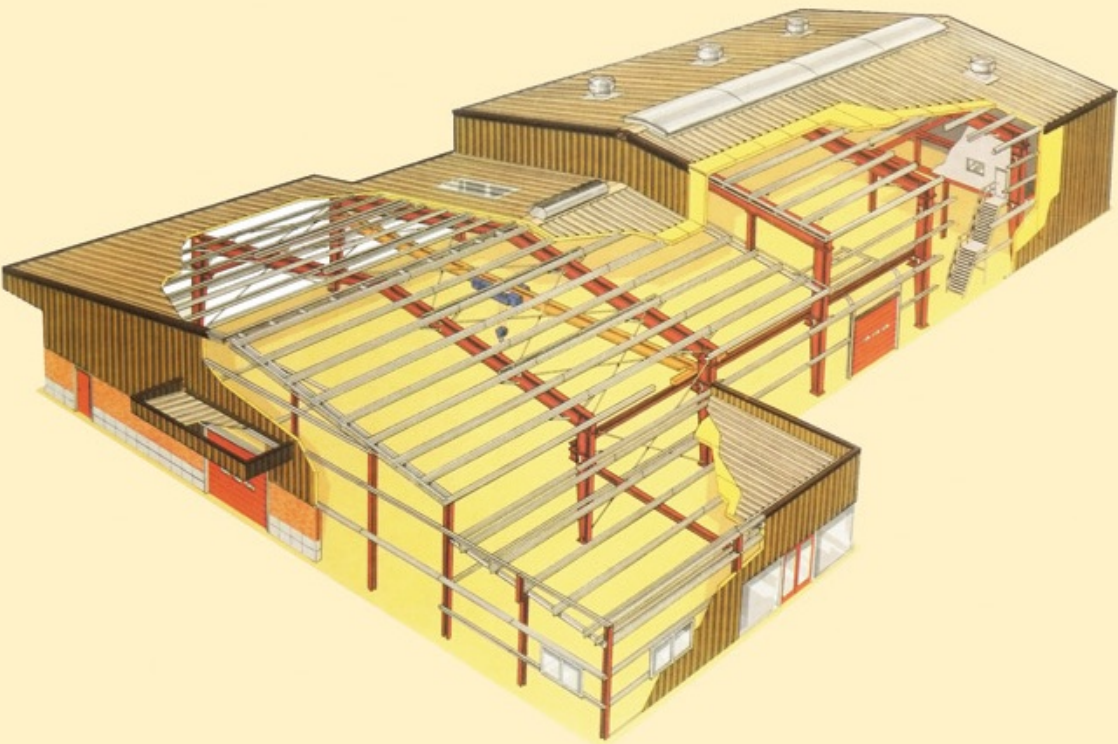
Connection of wall panels



Joint of wall and ground

Fiber cement board	Mateiral	Thickness
Surface Board	Fiber cement board	6mm、9mm
Bottom Board	Fiber cement board, MGO board	6mm、9mm
Dimension	1220×3000 1220×2440 (mm)	
Thickness	46mm、50mm、76mm、79mm、96mm、100mm、	
Insulated Core	Expanded polystyrene (insulated and low cost), Polyurethane (the best insulating material), Rock Wool(insulated and fire-proof, Extruded polystyrene (high density and insulated)	
Joint Way	Male-female groove	

Light steel structure



Light steel structure

Dissection



SINGLE-SPAN CONSTRUCTION
APPLICABLE FOR: WAREHOUSE, SALES CENTER, FACTORY OR OTHER CONSTRUCTIONS NEEDED LARGE AREA OF HIGH EAVE



MULTI-SPAN LOW CONSTRUCTION
APPLICABLE FOR: OFFICE, GROCERY AND ANY KINDS OF STORE



SINGLE-SPAN CONSTRUCTION
APPLICABLE FOR: WAREHOUSE, SALES CENTER, FACTORY OR OTHER CONSTRUCTIONS NEEDED LARGE AREA OF HIGH EAVE



ADDITIONAL CONSTRUCTION
APPLICABLE FOR: ADDITIONAL CONSTRUCTION, TOOL ROOM, OUTSIDE OF THE CONSTRUCTION, EXPUBLIC PLACE OF THE STORAGE



MULTI-SPAN CONSTRUCTION
APPLICABLE FOR: FACTORY OR FACTORY'S CONTINUATION



STANDARD-SPAN CONSTRUCTION
APPLICABLE FOR: INDUSTRIAL LARGE SPAN WORKSHOP(WITH CRANE), GYMNASIUM, WAREHOUSE ETC.

Light steel structure

Case



Light steel structure



Light steel structure — Case



Light steel structure — Case



1、 Light steel villa strong?

Light steel building seismic responses little,for structural aseismic measures costless, suitable for earthquakes areas; production, transportation, installation, maintenance is Maintenance convenient, reduce labor and Machinery cost. Structures are allconnected with bolts, greatly improves the seismic performance of the building, it can meet all the requirements for seismic resistance.

2、 How is the light steel villa durability?

Structure with special anticorrosive processing, So it can guarantee the steel to prevent corrosion, prolong the service life of steel; Using new light weight maintenance materials, non-combustible, no mildew, don't eat by moth.

3、 How long time to building the light steel villa by winhouse company ?

An independent 120m'house, the main structure just need 5 days, one month finished coarse decoration, fine decoration need two and half months to finished.

4、 How is the light steel villa sound insulation ?

Perfect song technology to meet the national building sound insulation standards, especially in the most sensitive to the human ear within 250 ~ 100 Hz audio, focus on the strengthening of professional processing, create quiet and comfortable living environment.

5、 How is the winhouse decoration standard?

decoration standards can be paperback, hardcover, also can according to customer requirements tailored for you, remove trouble back at home, let your peace of mind.

6、 How to hang a picture on the wall or stickers?

With screw or binder can be very convenient on the wall of the house decorate adornment, using screws is very firm.

7、 Light steel villa is easy to form cold bridge or thermal bridge effect?

Steel is a good conductor of cold and heat, related energy efficiency tests show, when the light steel structure Appropriate heat preservation and heat insulation measures. can be less or eliminate cold heat exchange between indoor and outdoor. We can still according to the requirements of the different construction to corresponding heat preservation and heat insulation measures, to get good thermal insulation effect.

8、 How can your jet benefit from light steel building project?

Same area of the building, you don't need to add any costs, it will be increased by 5% - 5% of the usable floor area.

The building time will be shorten half at least, the corresponding operation cost is reduced, you can get investment benefit in a shorter period of time.

Building process does not need large hoisting equipment, the construction site clean and tidy.

Good heat preservation and heat insulation function, the energy consumption of the light steel housing system can save 60% than traditional houses.

To most of the assembly work transferred to indoor, is not affected by outdoor weather and climate, reduce delays.

Light steel house light weight, can greatly save foundation cost.

9、

Through the process of patent technology, product system and discipline development, winhouse can provide a whole set of services, including design, fabrication and construction. Continuous improvement of technical system, safe and reliable quality assurance, enthusiastic and considerate service, For you to create a thermal insulation, seismic, comfortable, environmental protection of the green house has been prosperous, we sincerely hope to cooperate with you, with you to create a dream home!