

Economic Container House

1. Economic container house introduction:

1. Activity : removable and repeated use.
2. Quick assembly : short finish time, without foundation.
3. Safety: light steel structure, anti-typhoon, anti-earthquake.
4. Economic and high quality, can be stacked for 2 floors.

2. Technical Information

No	Project name	Value
1	Seismic grade	7-magnitude
2	Wind loading	8 level of wind loading
3	Floor loading	200kg/m ²

3. Project Cases





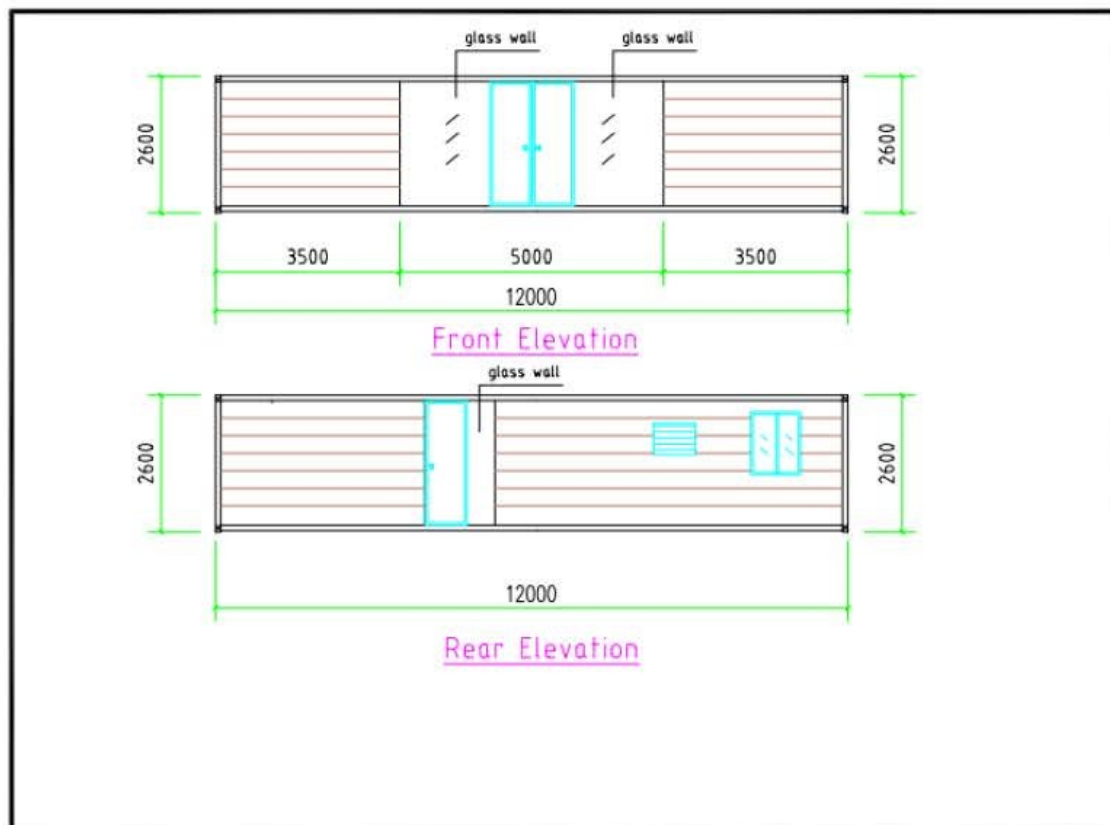
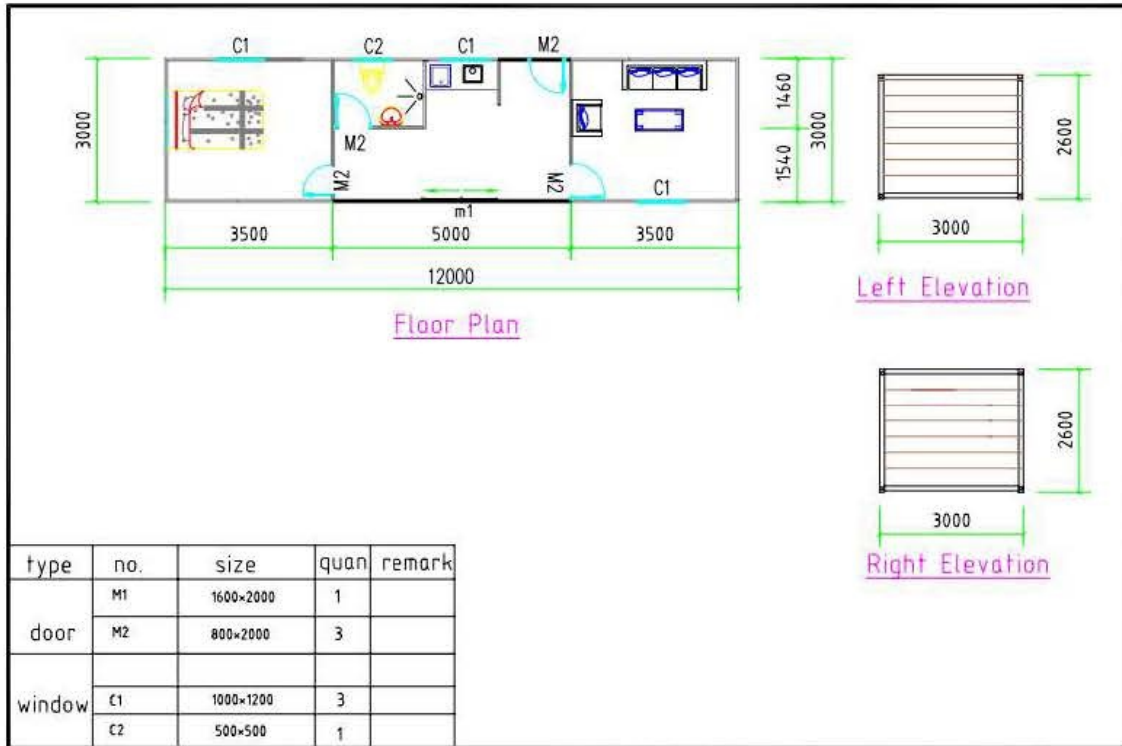
Informations:

Outer Length: 12000mm









Outer Width: 3000mm

Outer Height: 2600mm

4.Drawing



5.Details Quotation

No.	Component	Material	Photo
1	Chassis	100*100 square tube	
		10# C steel purlin	
		15mm cement board	
		Ceramic tile(inside)	
2	Wall Panel	75mm glasswool sandwich panel	
		Pvc wood clading	
3	Corner Column	100*100 square tube	
4	Middle column	50*50 Square tube	

5	Roof	100*100 square tube	
		50mm glasswool sandwich panel	
		30mm eps sandwich panel	
6	Window	aluminum window	
		Stainless steel security net	
7	Door	Aluminum glass door(entrance door)	
8	Accessory	Gal. tapping screw, rivet, bolt & sealant	

FOB foshan Price: \$14,500/unit

Remarks:

Foshan Honghu Light Steel Structure Factory.

A5 BLOCK SHIHAI STEEL LOGISTICS MARKET DANZAO TOWN NANHAI DISTRICT, FOSHAN

Email: admin@honghuhousing.com Mobile:+86 13534300404 andrew ho

- 1. Minimum order is 4 units.**
- 2. the validity period of the quotation is 14 days**
- 3. T/T 30% deposit, 70% balance before loading from factory.**
- 4. This price is not include water electric system,kitchen cabinet,stove)**
- 5. Packing Information**

Disassemble, 40HQ can load 4 units

