

Production Machines



auto welding machine

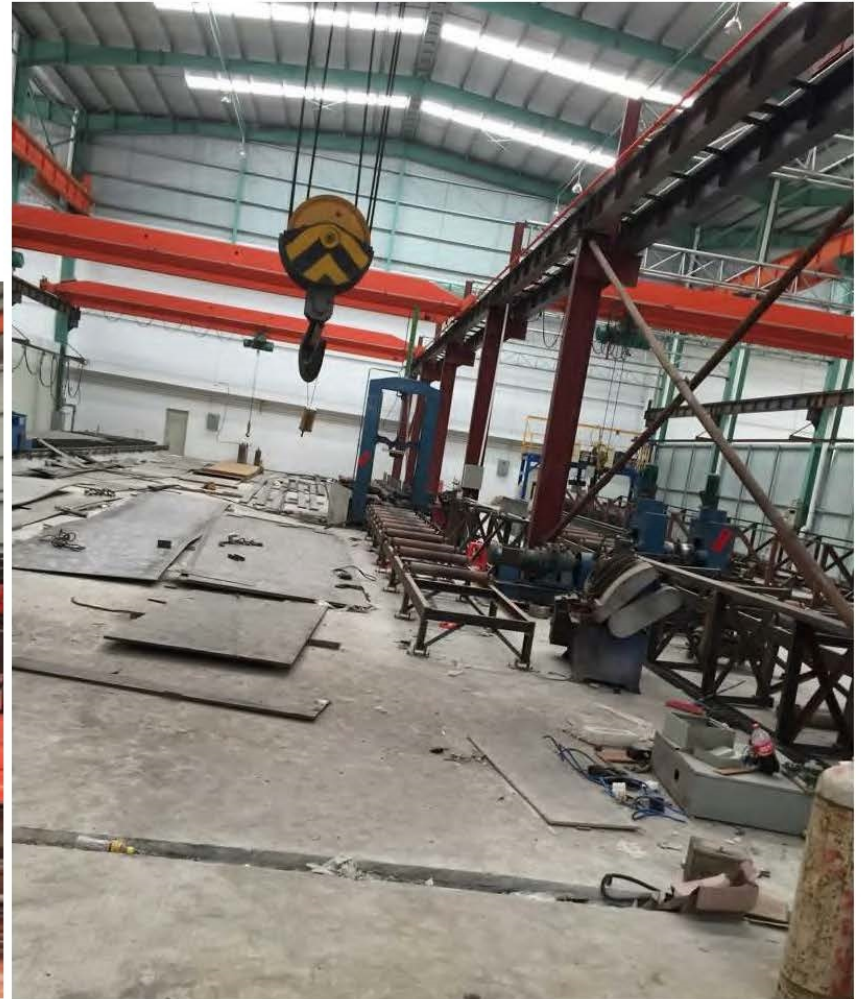


auto cutting machine

Production Machines



sand blast machine



combined machine

Production Machines



steel plate machine



sandwich panel machine



warehouse



Container House

Container house structure is simple easy to install.It is one construction product which mobile and widely used for real estate development company exhibition hall,product sale showroom,temporary reception center,commercial temporary office,and store and so on.



Container House

It's apply extensively as the temporary buildings in field for road, railway, construction projects and the temporary buildings for urban municipal projects, commerce and other projects, such as: office, meeting room, headquarters, dormitory and shop, school, temporary hospital.



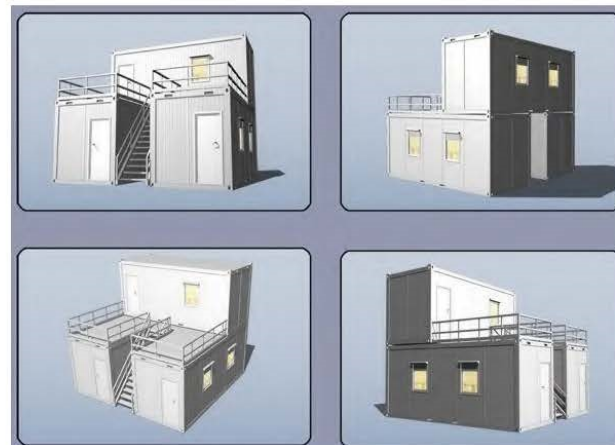

ASIAN DRAGON
International Corporation
**EVERYTHING
UNDER THE SUN**

Performance

1. Removable and repeated use;
2. Short finish time, without foundation;
3. Anti -typhoon, anti -earthquake;
4. Economic and high quality, can be stacked for 2 floors.



Two Storey Container



Typical Product



Typical Product



Office Container

Container office is a new type of activity room, adopting advanced modern home design, using lightweight steel, high-quality fire-proof sandwich panels, as well as a full range of indoor facilities. It is mobile and recycling, safety and environmental protection, economic efficiency and other advantages.



Office Container



Office Container



Bedroom Container

Typical Modular Unit –Accommodation



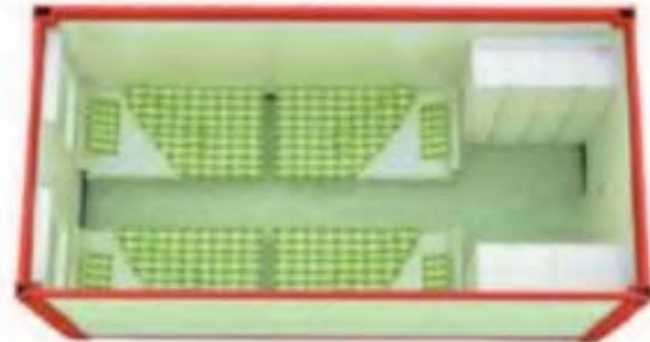
6058(L) x 2438(W)mm – One Person



6058(L) x 2438(W)mm – Two Person



6058(L) x 2438(W)mm – Two Person

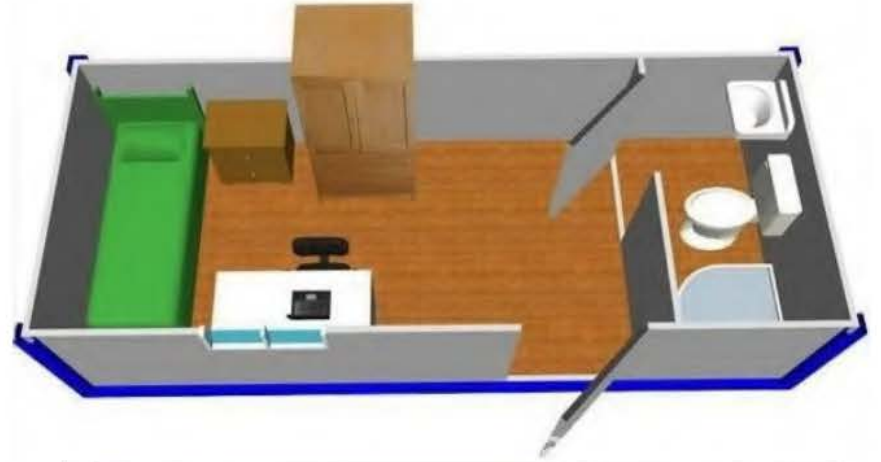


6058(L) x 3022(W)mm – Four Person

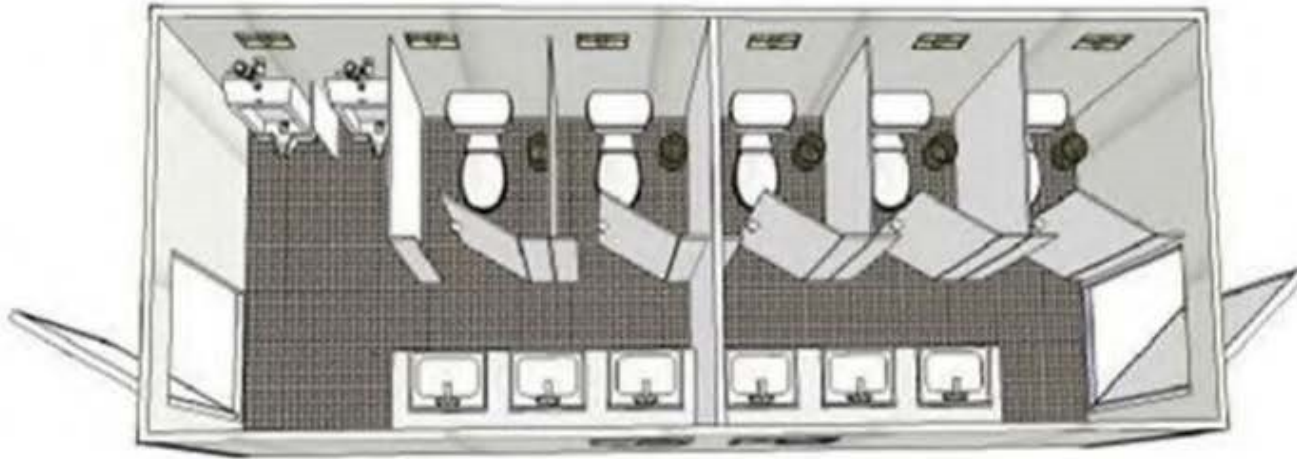
Bedroom Container



Bedroom Container



Toilet Container



Toilet Container



Project Case



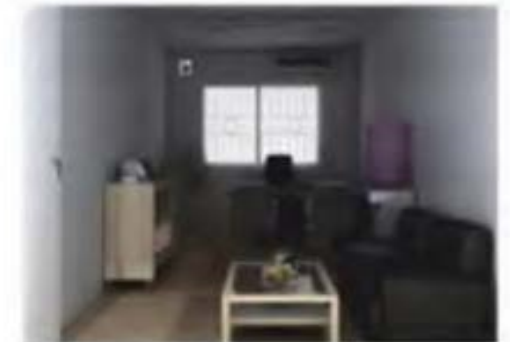
Project Case



Project Case



EVERYTHING UNDER THE SUN



Container House Details



glass door



sliding window



shutters window



light



switch



socket



electric distribution



leakage switch

Container Packaged In Bulk

Package and loading



12units in 40 HQ container

Container Packaged In Bulk

Container house installation



Container Packaged In Bulk

Installation details



Container Packaged In Bulk

Container house main material

Label	Component	Material
1	Chassis	100*100*2.0 square tube
		10# C Steel
		15 mm cement board
2	Column	100*100*2.0 square tube
		50*50*1.2 square tube
3	Roof	100*100*2.0 square tube
		50mm EPS sandwich panel
4	Wall panel	50mm EPS sandwich panel
5	Door	composite EPS sandwich panel door
6	Window	PVC sliding

Flat Pack Container

Package and loading



8 units in 40HQ container.



Flat Pack Container

Container house installation



Step 1



Step 2



Step 3



Step 4



Step 5








Flat Pack Container

Installation details



Packaged Container

Container house main material

No.	component	Material	Refer photo
1	Chassis	C chanel steel	
	Purlin	10# C Steel	
	flooring	15mm Plywood	
2	Wall panel	50mm EPS sandwich panel	
3	Corner column	3.0 mm Cold form steel	

4	Roof structure	3.0 mm Cold form steel	
5	Roof panel	50mm EPS sandwich panel	
6	Door panel	800*2000 composited EPS sandwich panel door	
7	Window	1000*1200 PVC Sliding window	
8	Accessories	Nuts, tapping screw, rivet, sealant etc.	



LIGHT STEEL STRUCTURE

