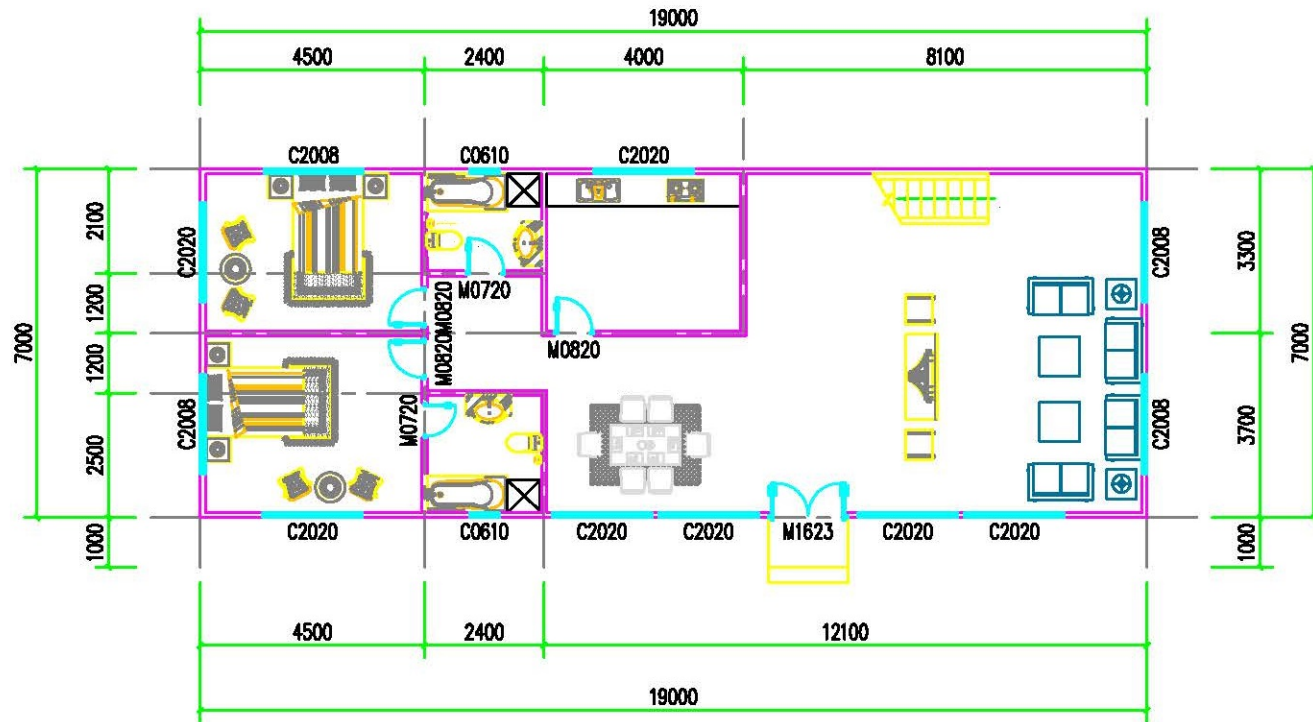



Construction	Water Supply
A.C. (Electrics)	Drainage
D.C. (Electrics)	Automatic



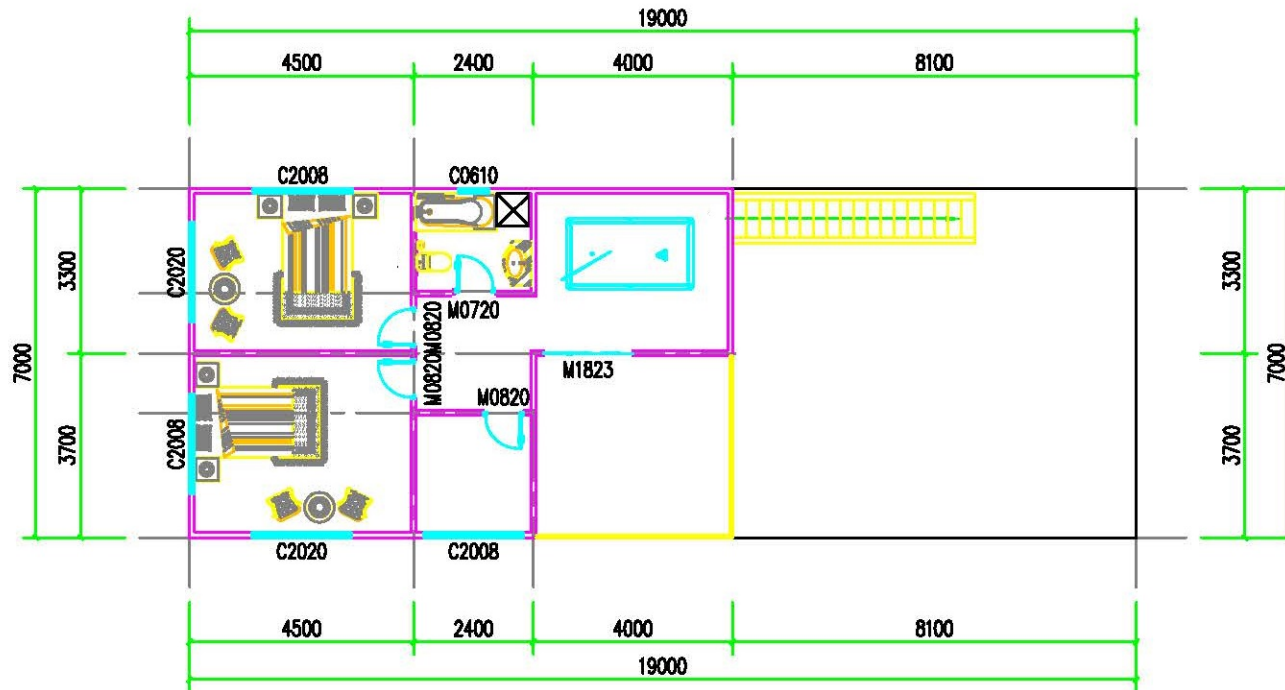
Ground Floor Plan

Window and Door List

Item	Item	Size(mm)	QTY	Name	Remark
Door	M0720	700X2000	2		
	M0820	800X2000	3		
	M1623	1600X2300	1		
Window	C0610	600X1000	2		
	C2008	2000X800	4		
	C2020	2000X2000	7		

 <small>International Corporation</small>	<b>Steel Modular Housing</b>			
	Approve		Project	
	Auditing		Title	<b>Ground Floor Plan</b>
Contact		Design		Job No. <b>20180228-5</b>
Tel:		Check		Drawing No. <b>J-01</b>
				Date <b>2018-02-28</b>

Construction	Water Supply
A.C. (Electrics)	Drainage
D.C. (Electrics)	Automatic



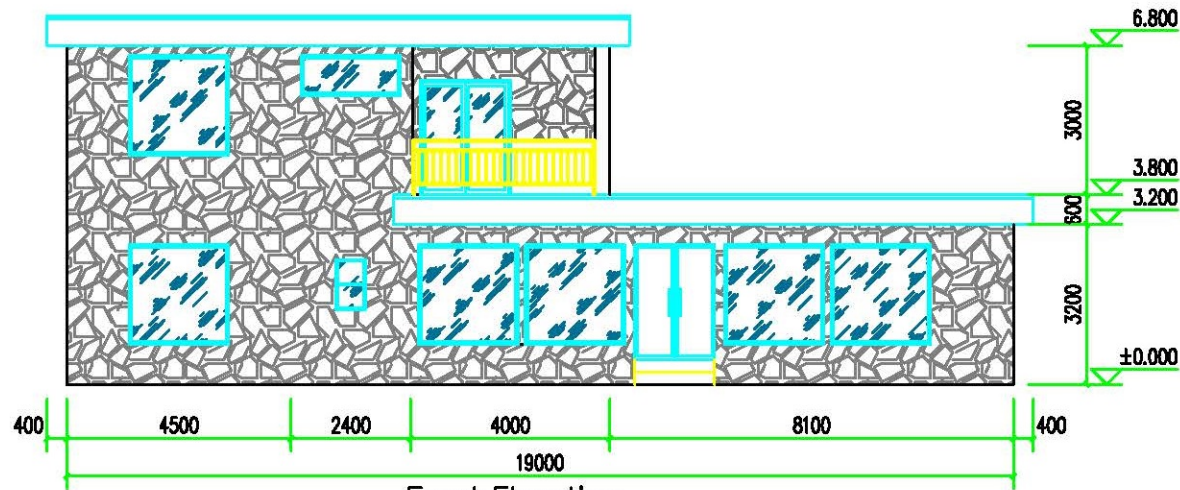
First Floor Plan

Window and Door List

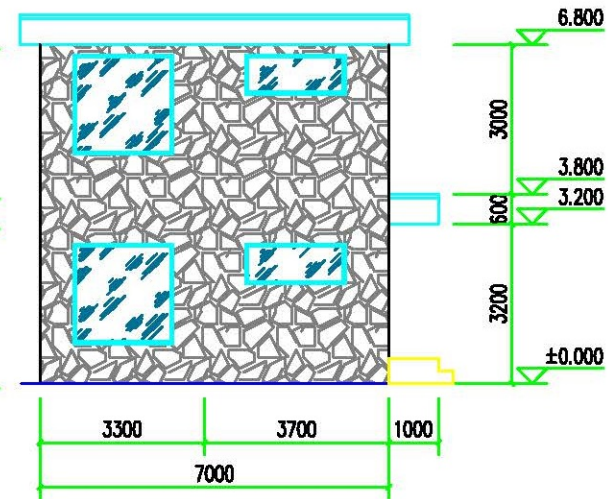
Item	Item	Size(mm)	QTY	Name	Remark
Door	M0720	700X2000	1		
	M0820	800X2000	3		
	M1823	1800X2300	1		
Window	C0610	600X1000	1		
	C2008	2000X800	3		
	C2020	2000X2000	2		

	Approve		Project	
	Auditing			
	Design		Title	First Floor Plan
	Check			
Contact				Job No. 20180228-5
Tel:				Drawing No. J-02
				Date 2018-02-28

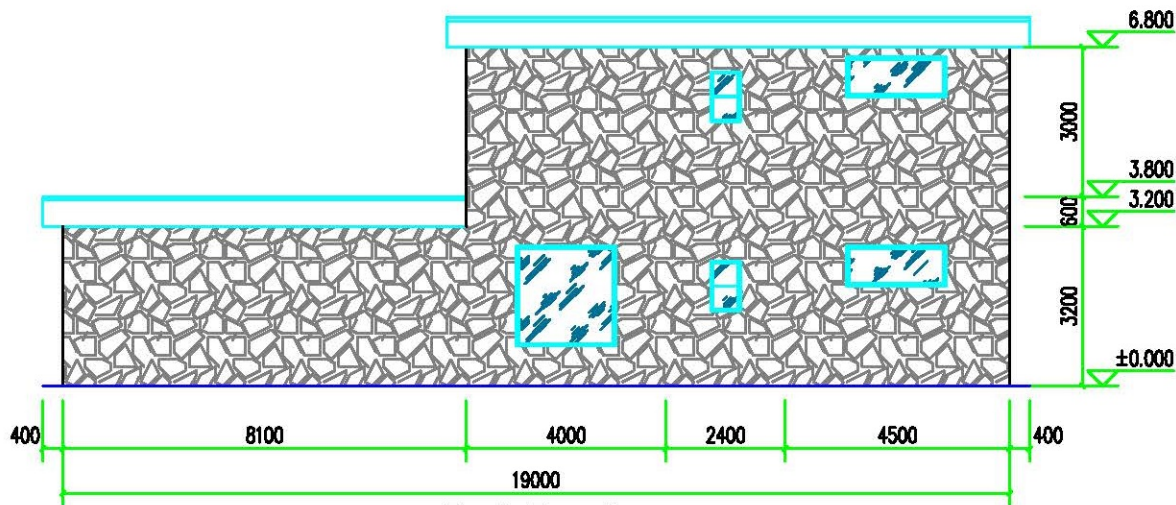
Water Supply	
Drainage	
Automatic	
Construction	
A.C. (Electrics)	
D.C. (Electrics)	



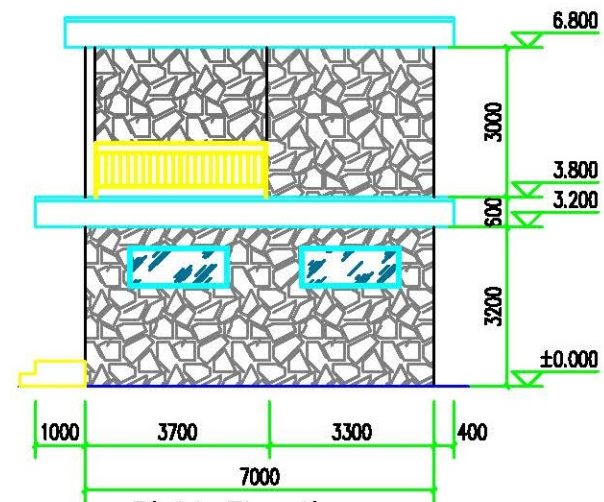
Front Elevation



Left Elevation



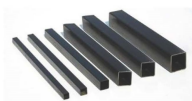
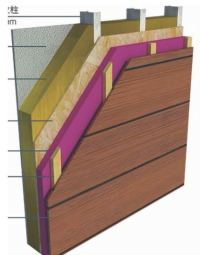
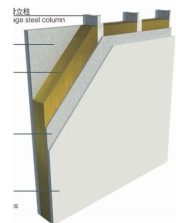
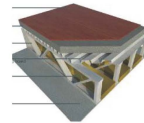

Back Elevation



Right Elevation




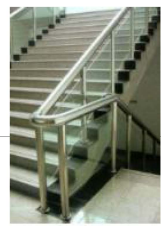
	Approve		Project	
	Auditing			Job No. 20180228-5
	Contact		Title	Drawing No. J-03
Tel:		Check		Date 2018-02-28

## Quotation

Project Name: villa house				No.: 20180226-5	
Size: 7m×19m×6.8m			TOTAL: 209.30SQ.M		Date: 2018-3-12
ITEM NO.	NAME	SIZE	QTY	UNIT	REMARK
<b>A.MAIN STRUCTURE</b>					
1	Pillar	□100×3.0	0.121	T	
2		□200×100×3.0	0.122	T	
3	Beam	□200×100×3.0	0.138	T	
4	Door Fram	□80×1.6	0.325	T	
5	steel fitting		0.085	T	
6	steel production		0.791	T	
7	steel derusting		0.791	T	
8	welding material		0.791	T	
9	steel lose		0.791	T	
10	steel painting		0.791	T	
11	Exterior Wall	8mm Cement Board	312.00	m <sup>2</sup>	
12		water proofing material	312.00	m <sup>2</sup>	
13		9mm OSB Board	312.00	m <sup>2</sup>	
14		C89×0.75 LGS	312.00	m <sup>2</sup>	
15		Glass wool insulation	312.00	m <sup>2</sup>	
16		8mm Calcium silicate board	312.00	m <sup>2</sup>	
17		6mm Calcium silicate board	312.00	m <sup>2</sup>	
18	Partiton Wall	6mm Calcium silicate board	150.00	m <sup>2</sup>	
19		8mm Calcium silicate board	150.00	m <sup>2</sup>	
20		Glass wool insulation	150.00	m <sup>2</sup>	
21		C89×0.75 LGS	150.00	m <sup>2</sup>	
22		8mmboard	150.00	m <sup>2</sup>	
23		6mm Calcium silicate board	150.00	m <sup>2</sup>	
24	Floor	C89×0.75 LGS	77.00	m <sup>2</sup>	
25		20mm Calcium silicate board	77.00	m <sup>2</sup>	
26	Roof	C89×0.75 LGS	161.00	m <sup>2</sup>	
27		9mm OSB	161.00	m <sup>2</sup>	
28		Glass wool insulation	161.00	m <sup>2</sup>	

# FOSHAN HEGE STEEL MODULAR HOUSING CO.,LTD






## Quotation

Project Name: villa house							No.: 20180226-5		
Size:7m×19m×6.8m				TOTAL: 209.30SQ.M			Date: 2018-3-12		
ITEM	NO.	NAME	SIZE	QTY	UNIT	UNIT PRICE	TOTAL PRICE	REMARK	
	29		8mm Calcium silicate board	161.00	m <sup>2</sup>	2.46	396.06		
	30		Aluminum sliding Door	1.00	set	508.20	508.20	1600×2300	
	31	Door	single wooden door	6.00	set	180.33	1081.98	800×2000 	
	32		aluminum door for toilet	3.00	set	163.93	491.79	700×2000 	
	33		Aluminum sliding Door	1.00	set	459.02	459.02	1800×2300 	
	34	window	Aluminum sliding window +Mosquito screen	47.20	m <sup>2</sup>	80.33	3791.58		
	35		Overhanging window	3.00	set	57.38	172.14		
	36	Stair	C89×0.75 LGS	1.00	set	1311.48	1311.48		
	37	rainling	stainless steel rainling	7.70	m	81.97	631.17		
	38	covering	steel bending	1.00	set	1524.59	1524.59		
	39	water gutter	aluminum gutter and water down pipe	1.00	set	967.21	967.21		
	40	screw	Galvanized bolts, expansion bolts, self tapping nails, etc.	1.00	set	1032.79	1032.79		
	41	Glue		1.00	set	470.49	470.49		
	43	<b>TOTAL PRICE</b>						<b>US\$35,664.14</b>	
	44	<b>UNIT PRICE</b>						<b>170.40 usd/m2</b>	





## Quotation

Project Name: villa house					No.: 20180226-5	
Size: 7m×19m×6.8m			TOTAL: 209.30SQ.M		Date: 2018-3-12	
ITEM	NO.	NAME	SIZE	QTY	UNIT	REMARK

### B、Exterior Decoration

1	exterior wall decoration	cement caldding	312.00	m <sup>2</sup>		
2	canopy flooring	ceramic tile	15.00	m <sup>2</sup>		
3		water proof material	15.00	m <sup>2</sup>		
4		glue	15.00	m <sup>2</sup>		
5	roof decoration	asphalt shingle	161.00	m <sup>2</sup>		
6		waterproof roll	161.00	m <sup>2</sup>		
7	screw	A self tapping nail, cement nail, etc	1.00	set		
8	glue	Silica gel, asphalt glue, etc.	1.00	set		
10	<b>TOTAL PRICE</b>					
11	<b>UNIT PRICE</b>					

### C、Interior Decoration

1	interior wall decoration	putty	490.00	m <sup>2</sup>		
2	wall tile	wall tiel	84.00	m <sup>2</sup>		
3		glue	84.00	m <sup>2</sup>		
4		water proofing material	84.00	m <sup>2</sup>		
5		caramic tile	180.00	m <sup>2</sup>		
6	flooring	anti caramic tile	16.00	m <sup>2</sup>		
7		glue for tile	196.00	m <sup>2</sup>		
8		water proofing material	16.00	m <sup>2</sup>		
9	ceiling	aluminum ceiling	16.00	m <sup>2</sup>		
10		Calcium silicate ceiling	196.00	m <sup>2</sup>		

## Quotation

Project Name: villa house No.: 20180226-5

Size: 7m×19m×6.8m TOTAL: 209.30SQ.M Date: 2018-3-12

ITEM	NO.	NAME	SIZE	QTY	UNIT	REMARK
	11	electrical	Basic lighting power and water supply and drainage pipes	1.00	set	
	12	sitting toilet		3.00	set	
	13	washing basin	560X420X810	3.00	set	
	14	shower room	with shower pillar	3.00	set	
	15	washing basin	170X40	1.00	set	
	16	kitchen cabinet		4.00	set	

### Total

1	TOTAL PRICE (A + B+ C)			US\$67,616.73
2	UNIT PRICE			
3	Loading (1 units)			3 PCS. x 40HQ

- (1) The price above is EXW factory
- (2) The price above includes the components listed above, anything not listed is excluded.  
The Price is not include the foundation
- (3) The price above is only for material, not including the installation on site.
- (4) Period of Validity for above offer: Within 15 days.
- (5) Payment Terms: T/T. 50% deposit, balance should be payable before loading.
- (6) Loading: above house **3Unit 40HQ**
- (7) Packing: dismantle and in nude pack. If buyer need special packing, charge will be additional.
- (8) Delivery time: depends on the order quantity, normally is 30 days.
- (9) Installation: not included in above price. We will offer drawing, picture, video for reference. And we also can send technician for guidance, but all the cost for it should be payable by the buyer, including the salary USD130 per day.