

# Our products



## 1. Environment-friendly EPS Cement Sandwich Panel (FPB)

- 1) **Face material:** calcium silicate board.      **Core material:** cement, EPS, sand, fly ash.
- 2) **Panel size:** (Length) 2270 mm x (Width) 610 mm ;  
Thickness can be chosen as 50mm, 60mm, 75mm, 90mm, 100mm, 120mm, 150mm, 180mm, 200mm.

### 3) Main technical indexes:

- Fireproof limit**  $\geq$  4 hours
- Sound insulation capacity in the air:**  $\geq$  40 Db
- Heat conductive index ( K -value ) :** 0.135 W/(m.k)
- Anti-pressure strength:**  $\geq$  5 Mpa
- Single piont hanging strength:**  $\geq$  1200 N
- Earthquake proof limit:** Level 8

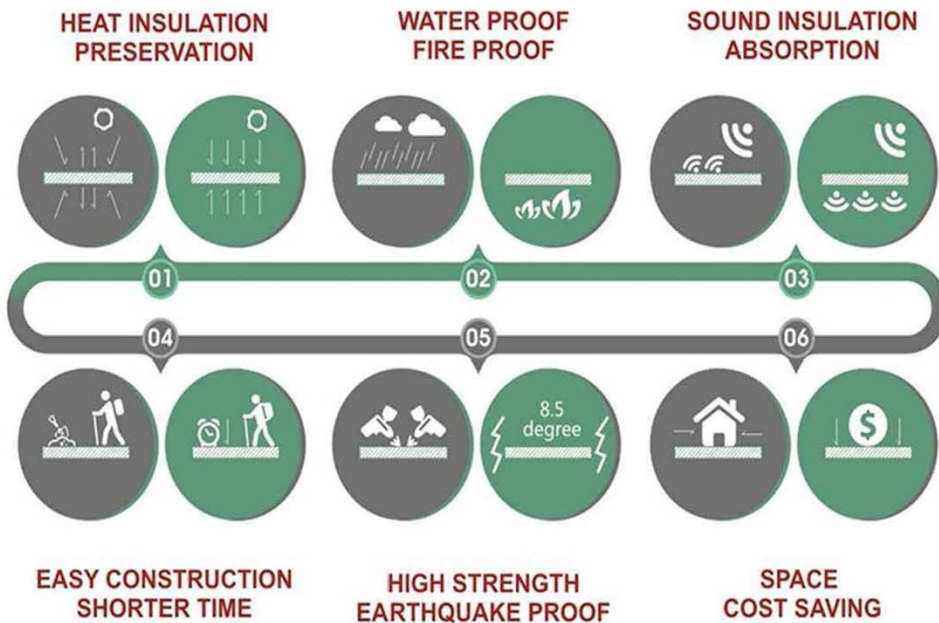


- 4) **Certificates:** CE, ISO9001, ISO14001.

- 5) **Manufacturing capacity:** 50,000 square meters per month



## PRODUCT ADVANTAGE



# PRODUCT EFFECTS



## 2. Prefabricated houses, villas, hotels, or other buildings (made of steel structure & our EPS cement sandwich panel )



### DESCRIPTION

Speed: 15-20 days

Life span: 70 years

Sound proof:  $\geq 40\text{db}$

Fire proof:  $\geq 4$  hours

Cost saving: USD120-200/SQM

Anti-earthquake:  $\geq 8.5$  grade

Wind loading capacity: CAT 5

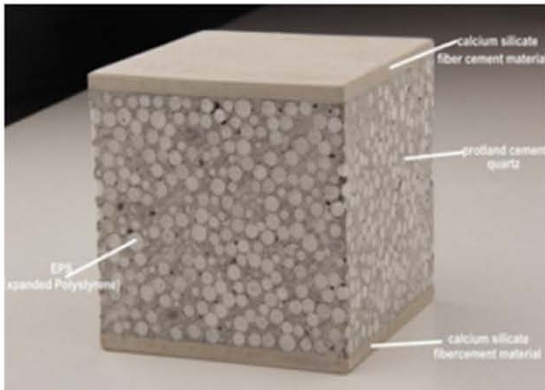
R Value: 1.2-1.5 M<sup>2</sup>·K / W

### PRODUCT EFFECTS



## DETAILED DESCRIPTION

### 1. EXTERNAL AND INTERNAL WALL



#### EXTERNAL WALL:

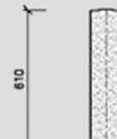
DQ EPS CEMENT WALL PANEL

#### INTERNAL WALL :

DQ EPS CEMENT WALL PANEL



- Typical dimensions of a panel are 610mm wide x 2270mm,2440mm,2700mm,3000mm high
- Typical thicknesses are 50mm,60mm,75mm,90mm,100mm,120mm,150mm,180mm,200mm
- Density of panel = 650kg/m
- Concrete compression strength minimum 5MPa
- Sound insulation capacity: 36-50db
- Heat transfer coefficient: 0.135w/(m.k)



150

### 2. LIGHT WEIGHT GALVANIZED STEEL STRUCTURE

Q235B galvanized steel material

Steel structure design using PKPM software according to China's standard design

Professional engineer make design of steel structure



### 3. ROOFING MATERIAL

#### SHINGLE TILES



#### Specification:

Name: Colorful Asphalt Shingle  
Length: 1000mm  
Width: 333mm  
Thickness: 2.7mm, 5.2mm  
Weight: 9.5-12.5kg/m<sup>2</sup>

#### Advantages:

Rich colors (12 kinds)  
Various shapes (5 kinds)  
Light, durable and environmental  
15-year experience in waterproofing construction field



#### COLOR STONE TILES



#### Specification:

Name: galvanized steel  
Length: customized  
Thickness: 0.35mm, 0.4mm, 0.45mm  
Weight: 2.2~2.8kg /tile  
Overall size: 1170\*420mm, 1335\*420mm  
Effective size: 1080\*375mm, 1280\*375mm



#### Advantage:

1. Beautiful appearance
2. Long service life for 50 years
3. Light weight
4. Easy construction
5. Energy saving and environment friendly



#### SPANISH SYNTHETIC RESIN ROOF TILE



#### Specification:

Thickness: 3.0mm  
Width: 1050mm/720mm  
Length: Customized according to the times of pitch  
Wave spacing: 160mm;  
Wave height: 30mm;

#### Advantage:

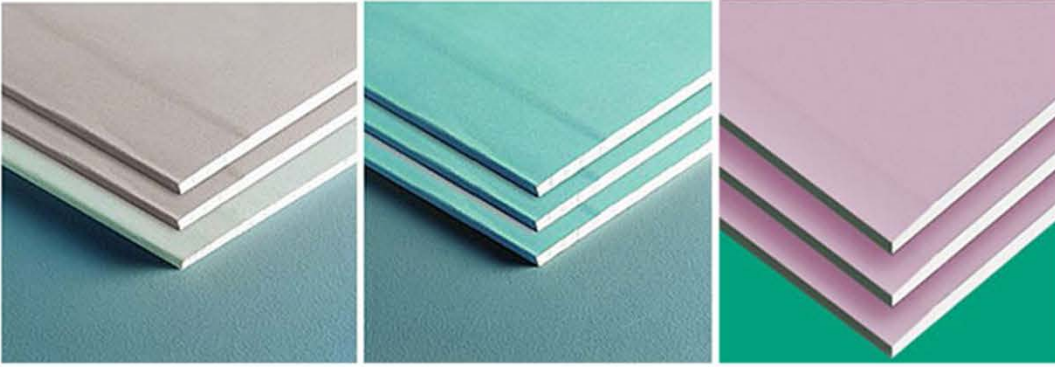
1. Long-lasting Color (at least 10 years)
2. Excellent Anti-corrosion performance
3. Good Waterproofing Performance
4. Strong Fire Resistance
5. Excellent Heat Insulating Property
6. Good sound insulation

## 4. CEILING

STANDARD GYPSUM BOARD

MOISTURE-RESISTANT/ WATER-PROOF

FIRE-PROOF GYPSUM BOARD



### SPECIFICATION:

Thickness: 6.4/6.5mm, 7mm, 8.5mm, 9mm, 9.5mm, 10mm, 12mm, 12.5mm, 13mm, 15mm, etc

Size: 1200X2400mm, 1200X1830mm, 1220X2440mm, 1200X2700mm, 1200X3000mm, 1200X3600mm

Specifications: Standard, Moisture-resistant, Fire-proof, Water-proof



### ALUMINUM CEILING \_ KITCHEN & BATHROOM



**SPECIFICATION:** Material: Aluminum Alloy

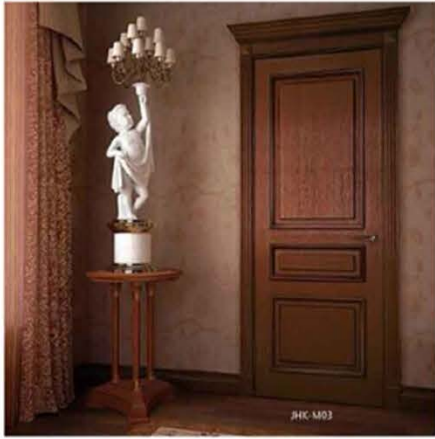
Size: 300x300mm

Thickness: 0.6mm



## 5. DOORS AND WINDOWS

### Entrance door - Steel Door



"Glory is fleeting,  
but obscurity is forever."  
— Napoleon Bonaparte



### Interior door - High Density Door



### Bathroom Door - Aluminum Frame with Glass Door



### Glass Door - Aluminum with Double glass



### Windows - Aluminum with double glass



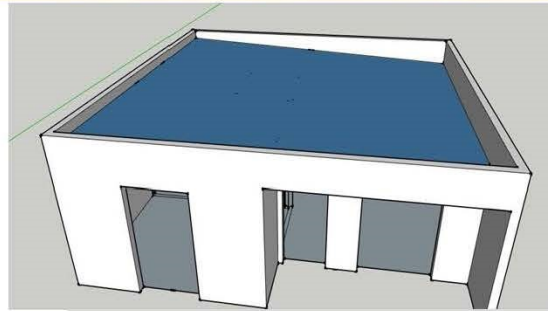
Normally, our company provides offers according to customers' house drawings.

Here we show some popular projects as examples:



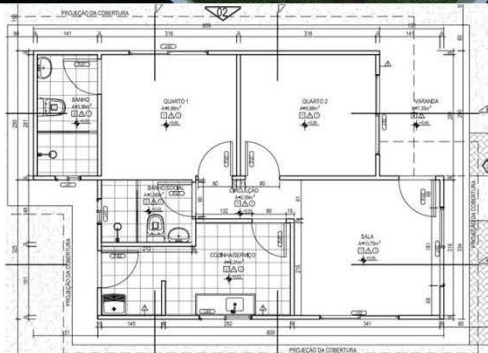
## ADIDQ101

55M2 = 2 bedrooms + 1  
bathroom  
+ 1 kitchen + 1 living room

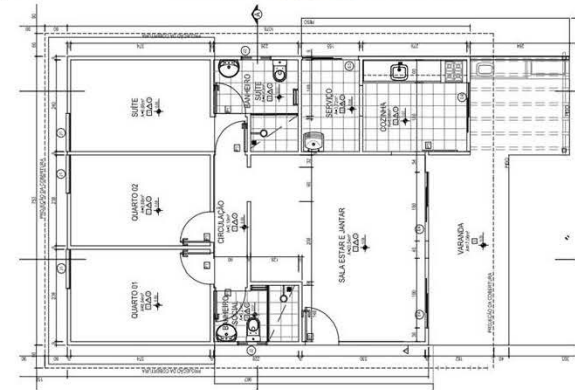


## ADIDQ102

50M2 = 2 bedrooms + 2 bathrooms  
+ 1 kitchen + 1 living room







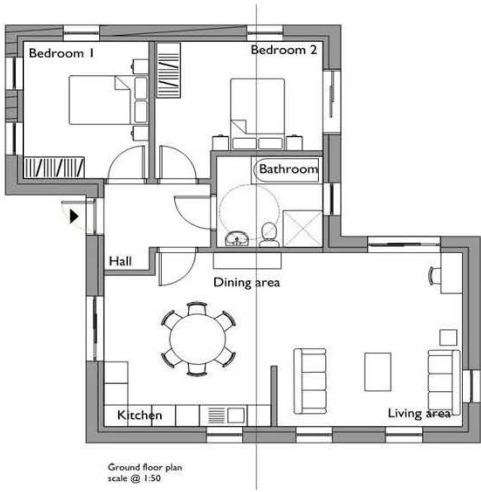
## ADIDQ103

75M2 = 3 bedrooms + 2 bathrooms  
+ 1 kitchen + 1 living room



## ADIDQ104

100M2 = 2 bedrooms + 1 bathrooms  
+ 1 kitchen + 1 living room + 1 dinner  
room



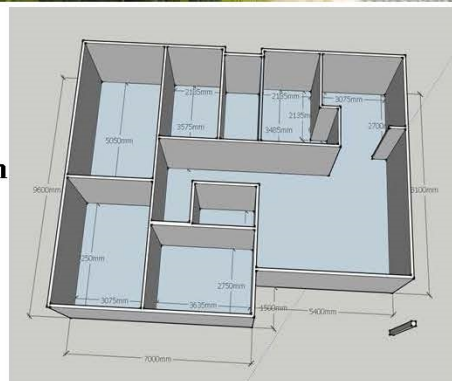
## ADIDQ105

105M<sup>2</sup> = 2 bedrooms + 1 bathroo.  
+ 1 kitchen + 1 living room



## ADIDQ106

120M<sup>2</sup> = 3 bedrooms + 2 bathrooms  
+ 1 kitchen + 1 living room + 1 dinner room

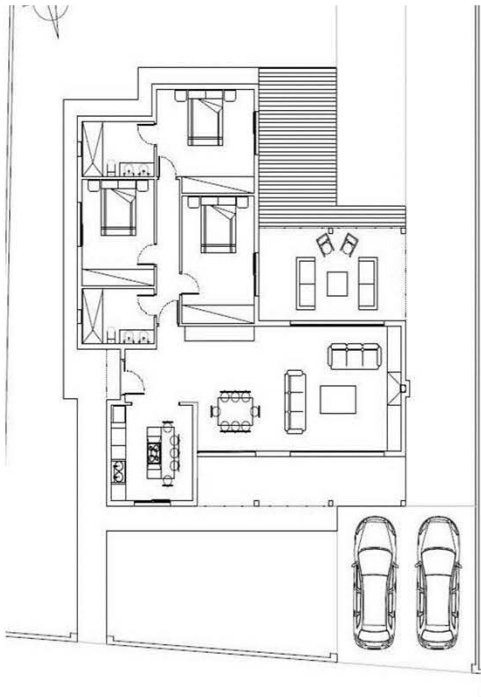
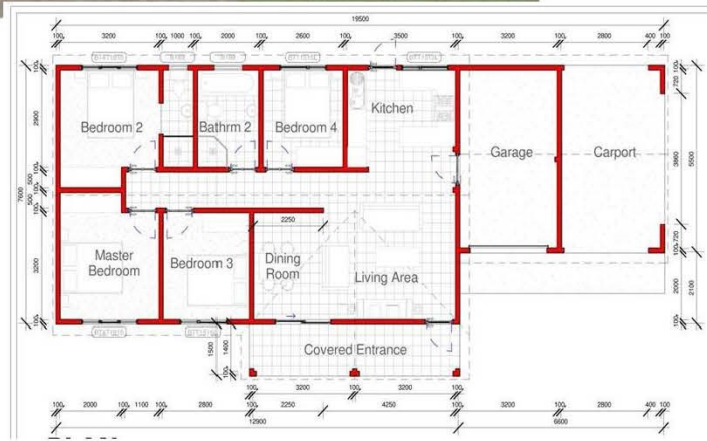




128m<sup>2</sup>

## ADIDQ107

128M<sup>2</sup> = 4 bedrooms + 2  
bathrooms  
+ 1 kitchen + 1 living room



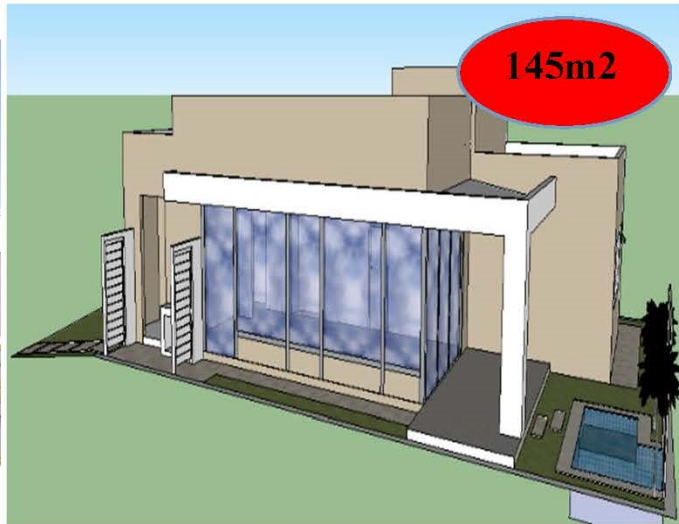
## ADIDQ109

133M<sup>2</sup> = 3 bedrooms + 2 bathroom  
+ 1 kitchen + 1 living room



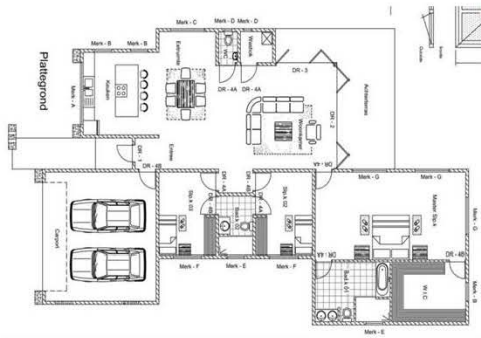
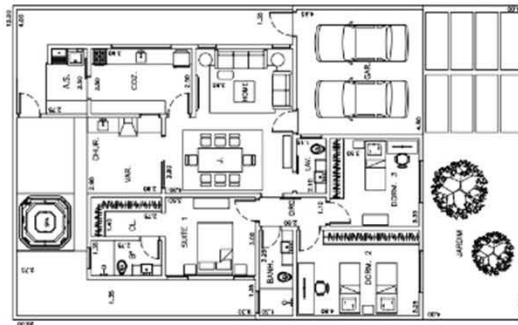
133m<sup>2</sup>





## ADIDQ109

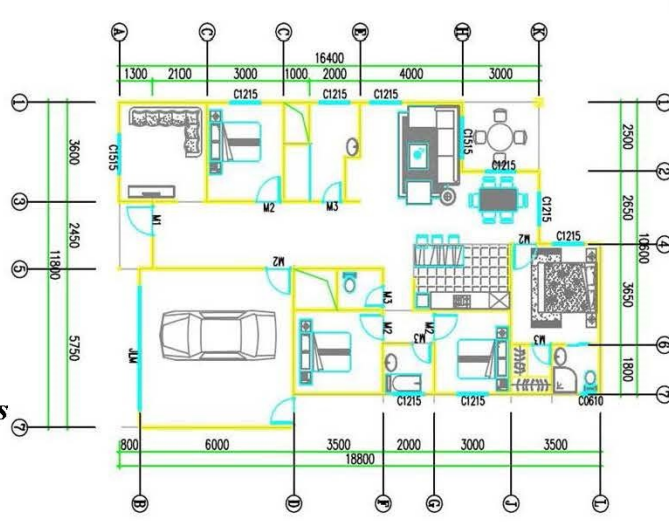
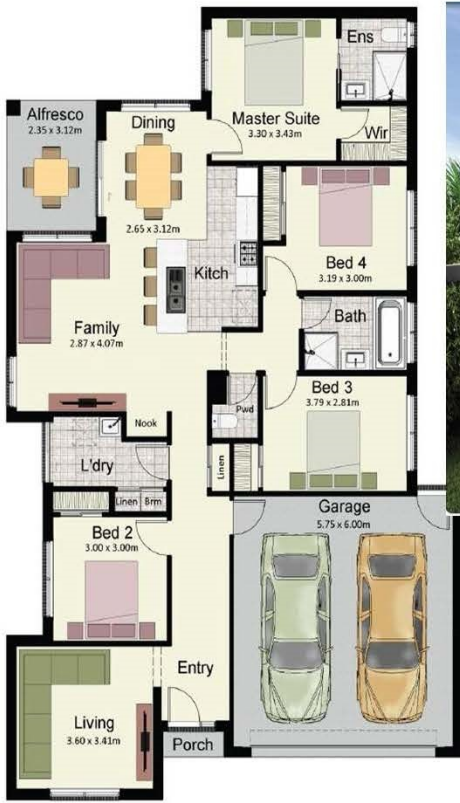
*145M2 = 3 bedrooms + 2  
bathrooms  
+ 1 kitchen + 1 living room + 1  
washroom + 1 barbecue area*



## ADIDQ111

*180M2 = 3 bedrooms + 2  
bathrooms  
+ 1 kitchen + 1 livingroom*





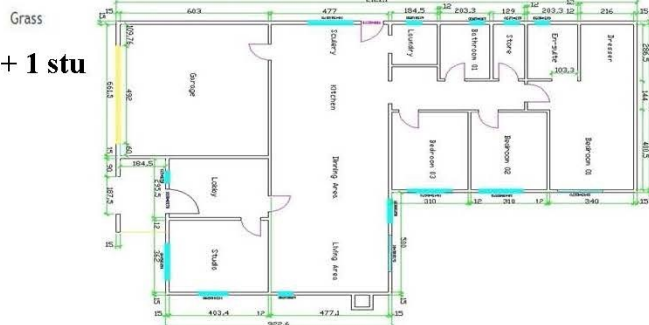
## ADIDQ113

186.5M<sup>2</sup> = 4 bedrooms + 3 bathrooms  
+ 1 kitchen + 1 living room



## ADIDQ114

250M<sup>2</sup> = 3 bedrooms + 2 bathrooms  
+ 1 kitchen + 1 living room + 1 garage + 1 stu  
+ 1 lobby





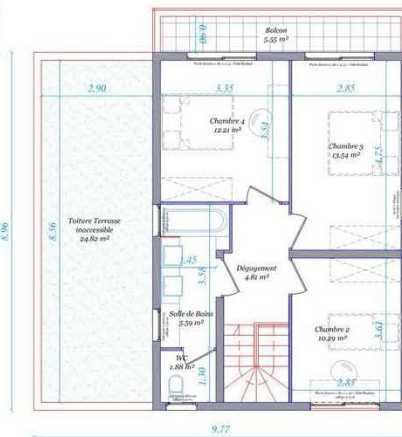
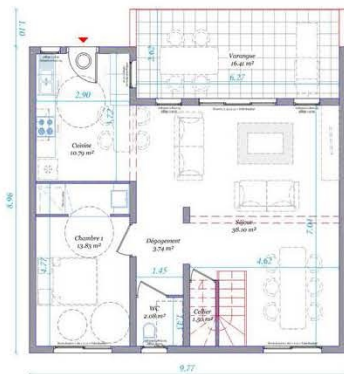
## ADIDQ201

*130M2 = 3bedrooms + 2  
bathrooms  
+ 1 kitchen + 1 living  
room*



## ADIDQ202

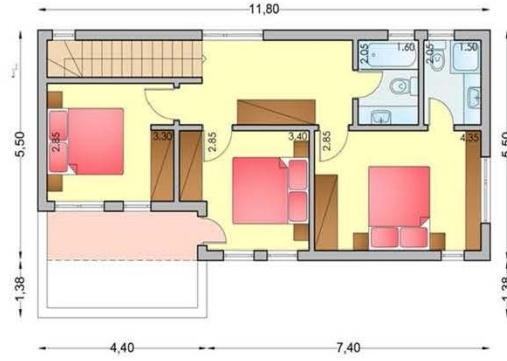
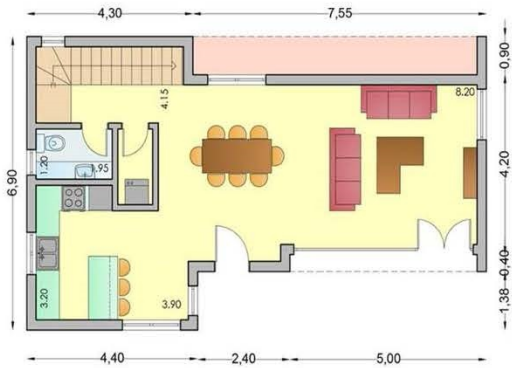
*130M2 = 4bedrooms+3bathroom  
+1 living+1 dining+1 kitchen*





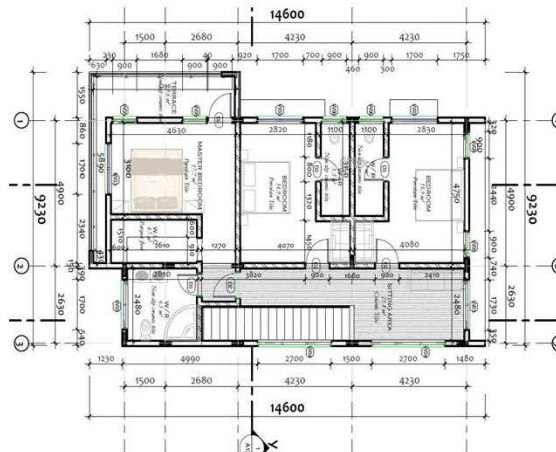
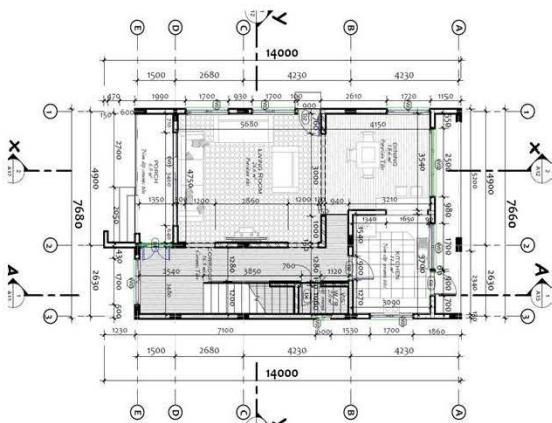
# ADIDQ204

*163M2 = 3 bedrooms + 3  
bathrooms  
+ 1 kitchen + 1 living room*



# ADIDQ205

*220M2 = 3 bedrooms +  
3bathrooms + 1 kitchen + 1  
living room+ 1 dinner room*



(ground floor)

