



ASIAN DRAGON
BY THE
**EVERYTHING
UNDER THE SUN**
Catalog

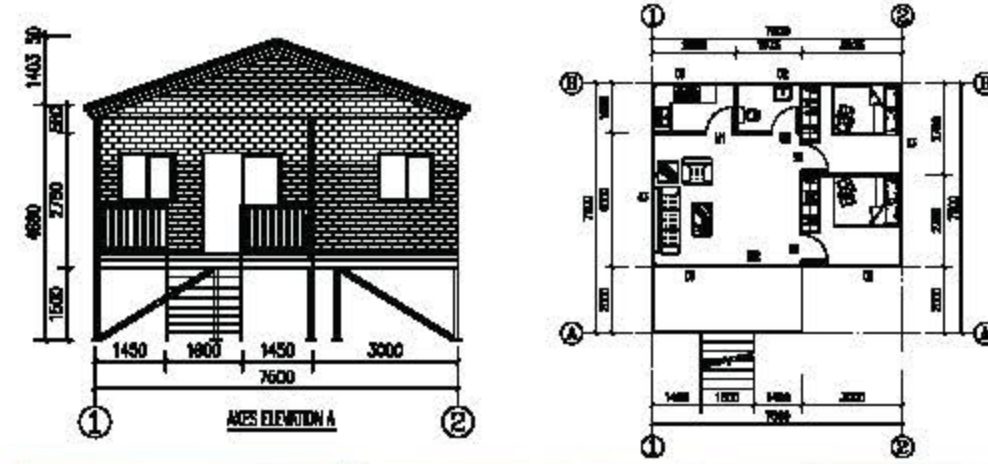
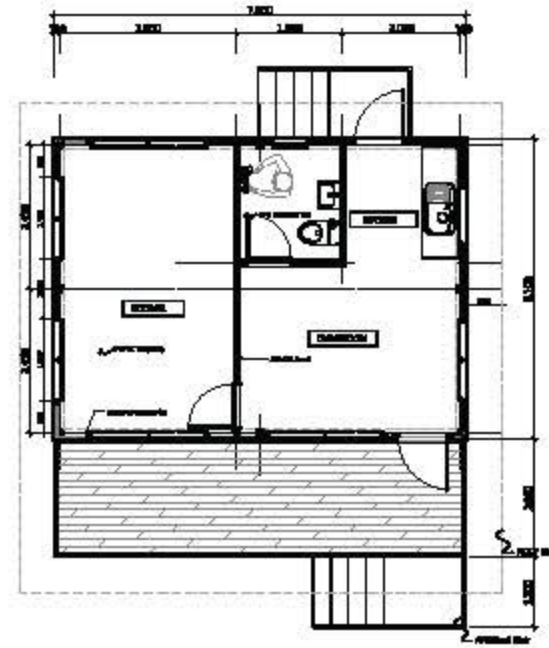
KIT HOMES

ADIKH0707



ADIKH0708

Pacific Islands Prefab Farm House 21 Sets With Accessories



Installation

Ready Goods In Workshop With Panels Precut



Interior



KIT HOMES

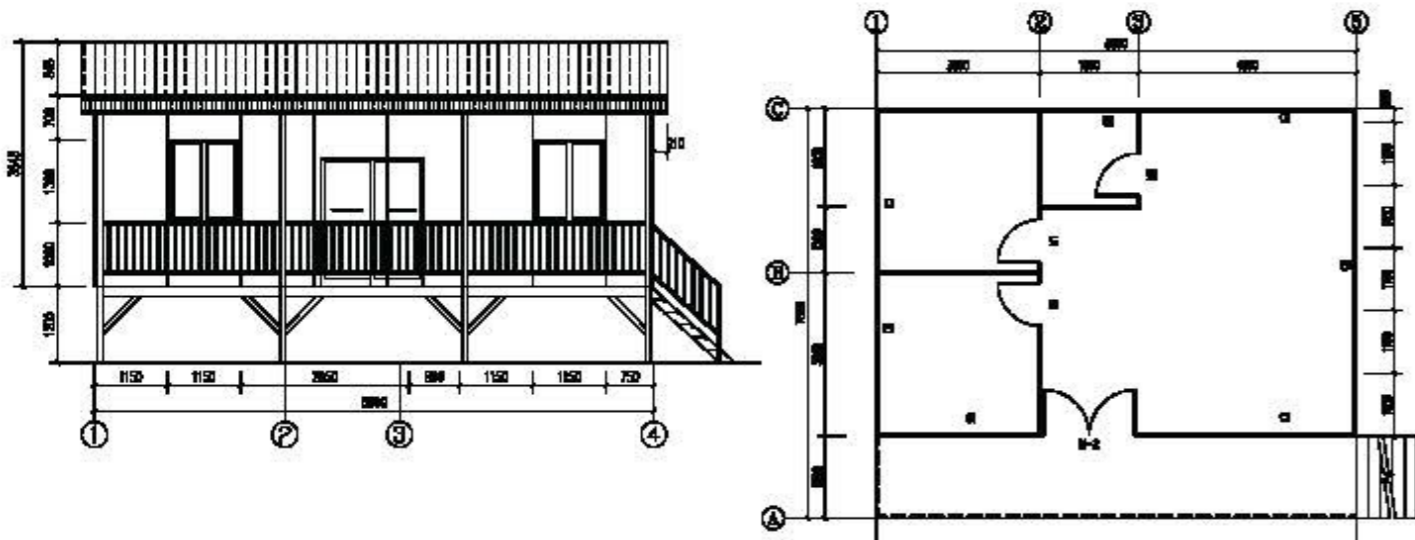
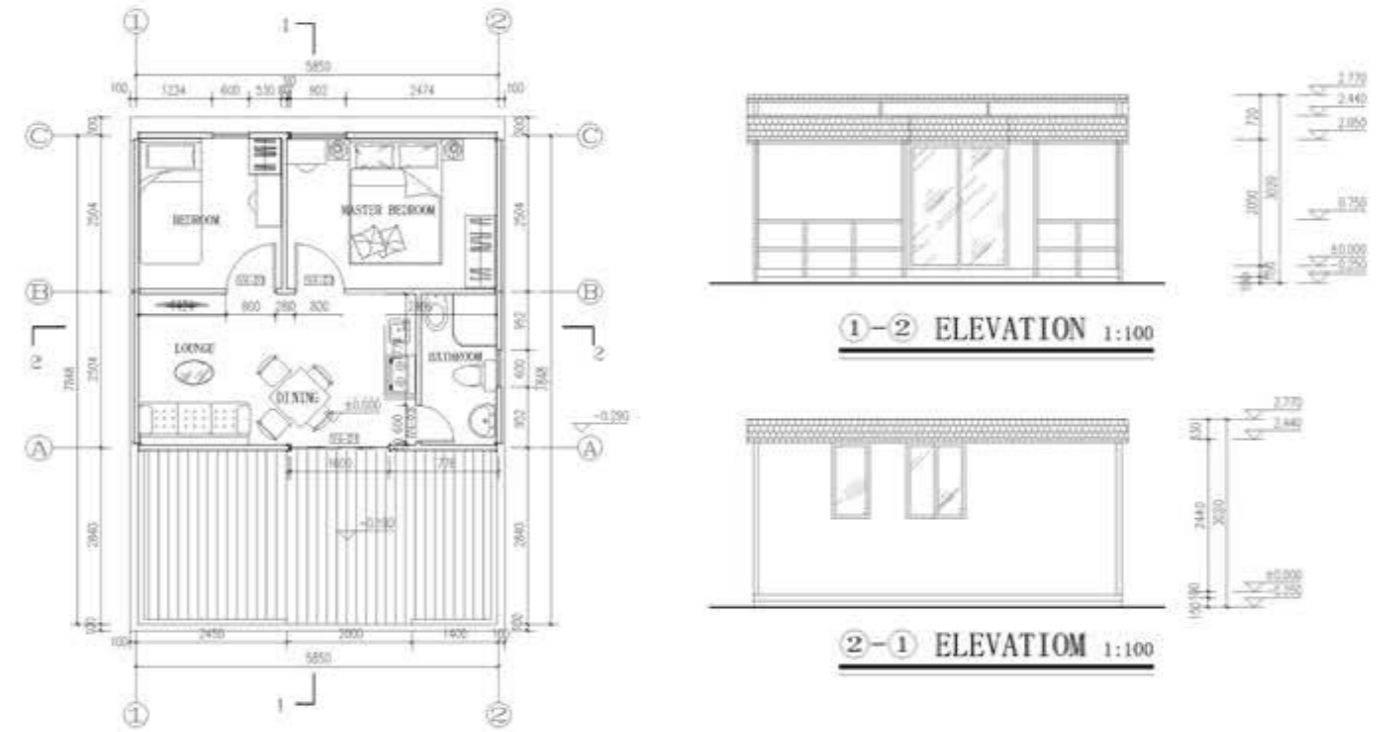
ADIKH8875



The Farm House

ADIKH7858

Prefab Kitset: Holiday Beach House



Interior



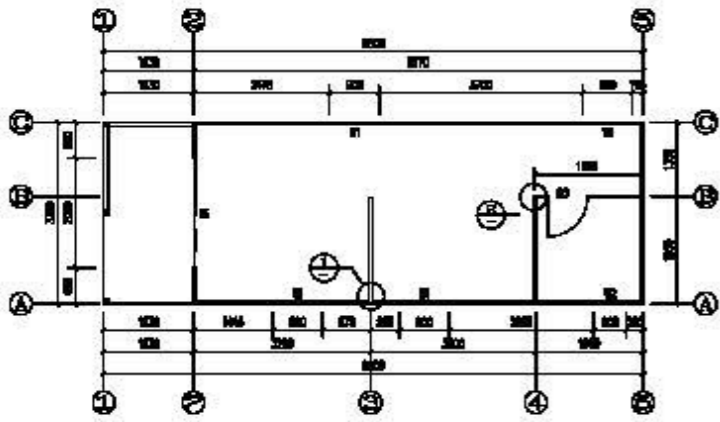
PORTABLE HOUSE

ADIPC9833

Granny Flats are a fantastic way to take full advantage of the potential of your property and land at a minimum cost. They are becoming a trendy and a popular choice for Island Countries.



Granny Flats / Apartment 3.3m x 9.8m x 2.6m



Interior Layouts Can Be Customized



Test Assembly At Factory



Finished Goods



Prefabricated Farm House Project in Fiji After Typhoon Winston

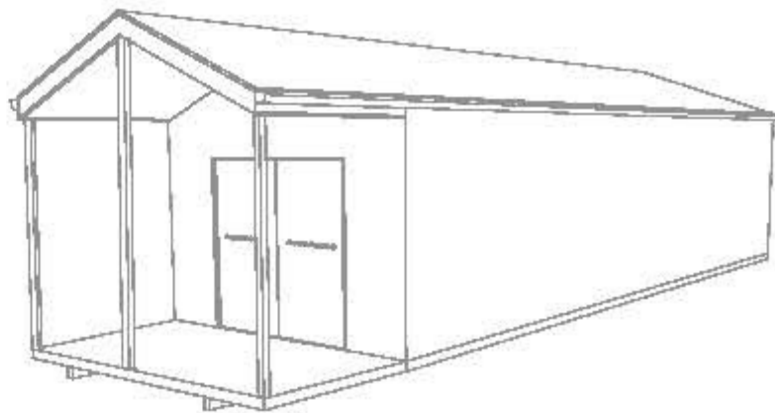
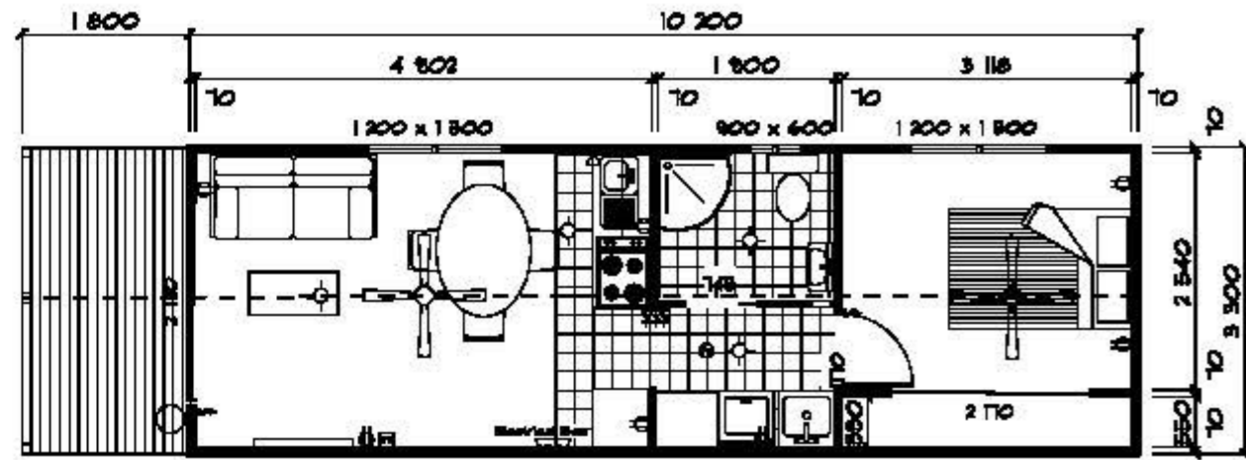


Before

Now

PORTABLE HOUSE

ADIPC1233

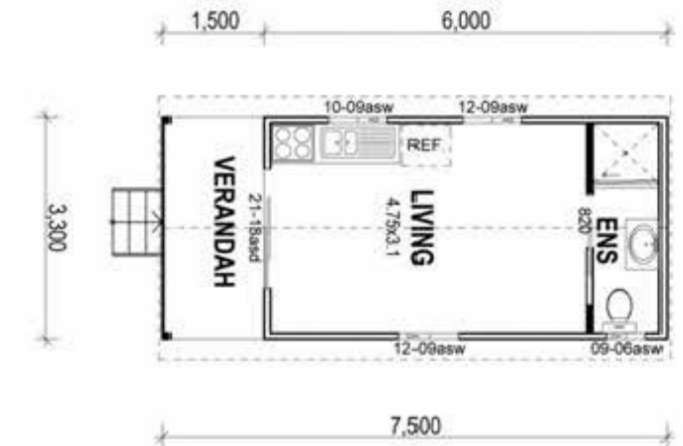


TRANSPORTABLE CABIN IDEAL FOR:
 Holiday Park, Beach Resort, Station,
 Farm Quarters, Temporary Offices Or
 A Teenagers Retreat.

ADIPC8033



Portable Cabin PC8033
 Interior Australia



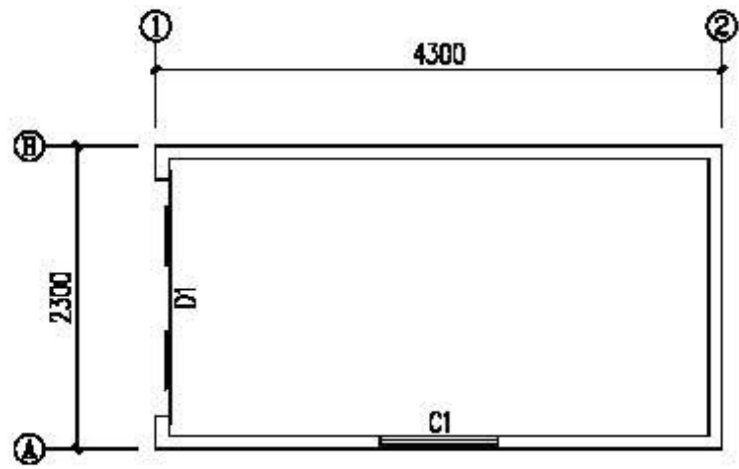
PORTABLE HOUSE
 ADIPC7533

PORTABLE HOUSE

ADICB2343-2 Hot Seller In Trade Mate - 13 Units Were Sold Out In A Week!



New Zealand Standard Prefab Cabin Under 10sqm - Government Approval Free



PORTABLE HOUSE

Project Cases



Portable House PH14273



Portable House PH0966



Portable House PH109735



Kit Homes KH5674 Philippines



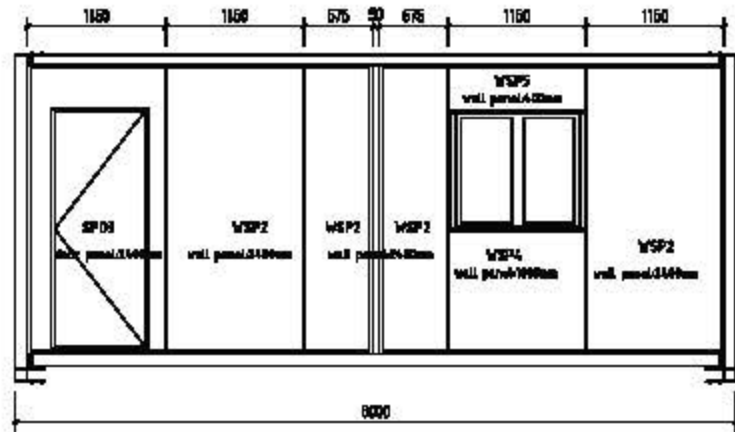
Portable House PH14433



Portable House PH0730 Vanuatu

STANDARD CONTAINER HOUSE

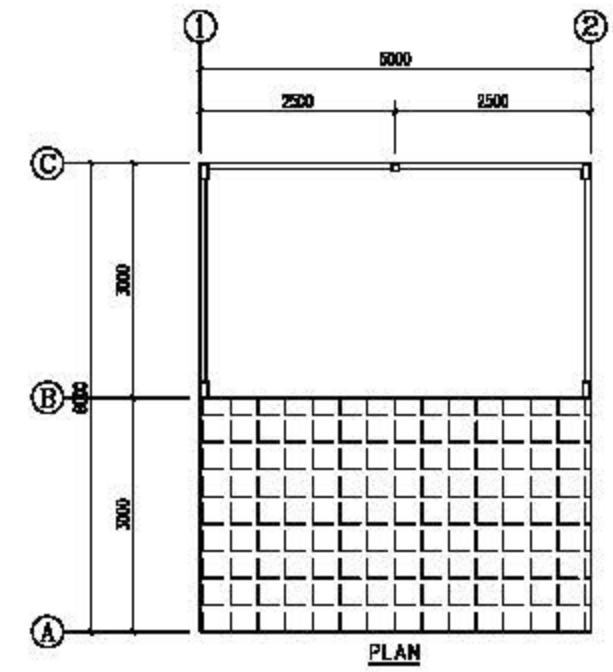
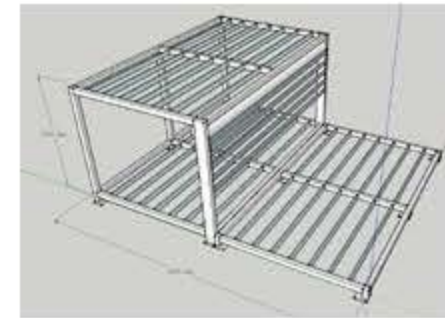
ADISC0624



Hot Selling Completely Knock Down Stackable
 Container Office 2.4x6x2.6(m) height
 1x40HQ loads 14 units.
 600 Units Sold!

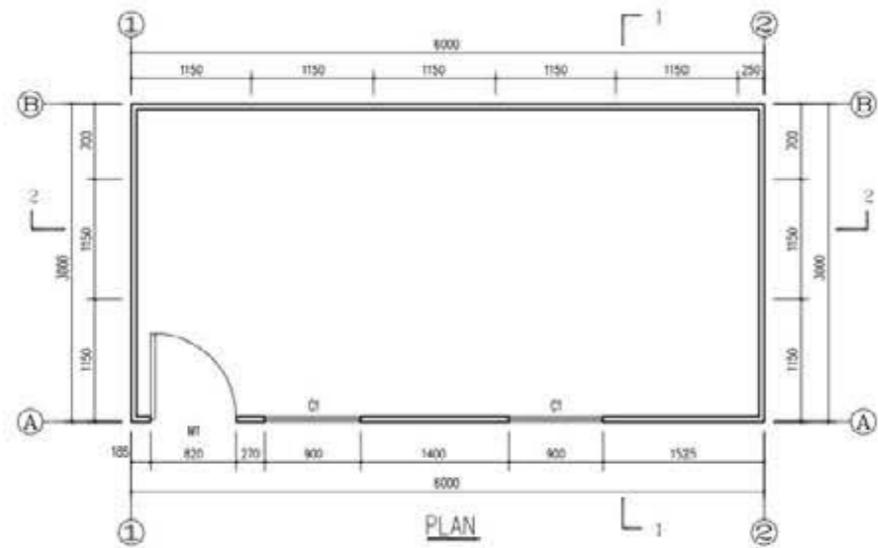


ADISC0503 Container Coffee Shop



STANDARD CONTAINER HOUSE

ADISC0603



Installation



Site Container Office
 SC0603 series can be
 lengthen to 14m long
 300 Units Sold !!

ADISC0603B with Ensuit Bathroom



1 open room with bathroom ensuit suitable for site office,
 prefab studio, hotel room, beach
 house, family living house



STANDARD CONTAINER HOUSE

ADISC0603C Annex Model



SC0603C annex model

1 open room with bathroom ensuite

Aluminum Glass Sliding Entrance Door

PVC External Cladding with Great Aesthetic Look



FLAT PACK CONTAINER HOUSE



Model B

Columbia Army
Container Camp

Type	External dimension(mm)				Internal dimension(mm)			Weight (KG)
	Length	Width	Height (Package)	Height (Assembled)	Length	Width	Height	
Standard container								
20R	8068	2438	720	2896	5820	2200	2680	1850
40R	12116	2438	720	2896	11878	2200	2680	3680
Non-standard container								
10R	3029	2438	720	2896	2800	2200	2680	1200
16R	4646	2438	720	2896	4410	2200	2680	1750
24R	7263	2438	720	2896	7030	2200	2680	2300
30R	8887	2438	720	2896	8650	2200	2680	2450

1. General description:

The product is multi-functional standard container house; its dimensions of frame fit the international container transportation standards. And it has fasteners for assembling and disassembling. It can be processed and designed as the client's require in order to reach the functions for living, working, school and meeting etc. It is a prefabricated building assembled by top, bottom, corner column and envelop enclosure and can be used in single one or combined in any direction. (Repeating disassembling is lossless.)

2. Transportation:

The container house itself will be flat-packed as independent package and height is 720mm, 4 sets as one unit package height is 2880mm. Transported by sea, truck.

3. Basic information (based on the standards of ISO)

External diameter - L 6058mm * W 2438mm * H 2896mm
 Internal diameter - L 5820mm * W 2200mm * H 2680mm
 Color - white grey
 Weight - 1850 KG/set

4. Steel Frame:

-3mm thickness steel pillar+3mm steel beam (Hot-galvanized+primer and surface paintings)

5. Wall structure:

1) EPS/Rockwool/PU Sandwich Panel

7. Roof structure:

Allowable load: -1.5 KN/m²

9. Other options:

Optional accessories:

- Doubled door, sliding door, glass door
- EPS/Rock wool/PU insulation
- Panorama French window
- Bathroom, kitchen, furniture
- External decoration PVC/WPC cladding
- Outer box size can be customized

Reserves the final power of technical modification

6. Floor allowable load:

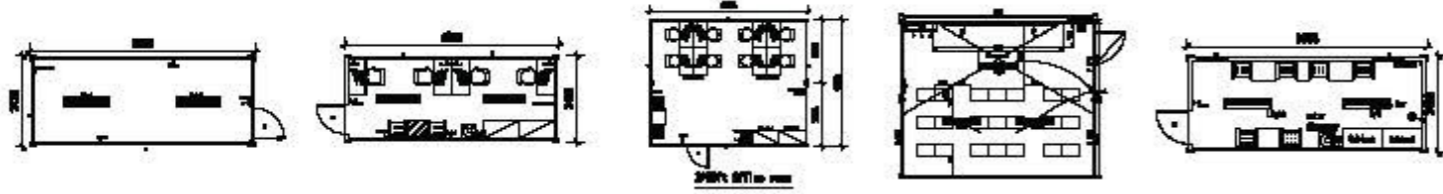
-2.5 KN/m²

8. Door and windows

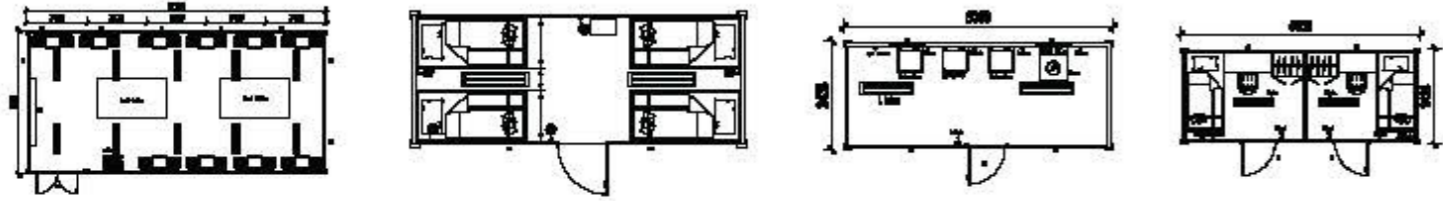
- 1) Steel door (with keys)
-830*2035mm
- 2) Window:
-800mm*1100mm UPVC Sliding
5+9+5mm double glass window

FLAT PACK CONTAINER HOUSE

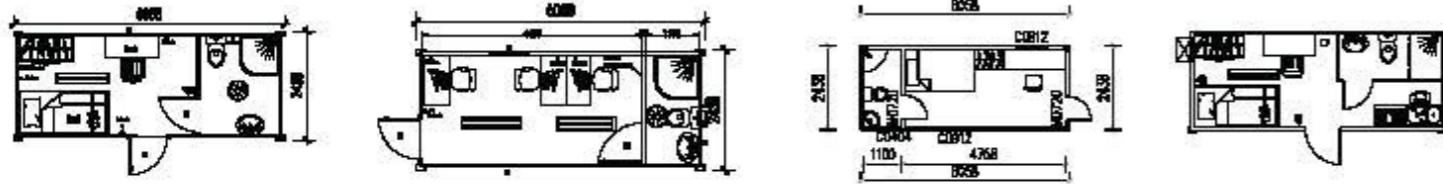
Design Layouts



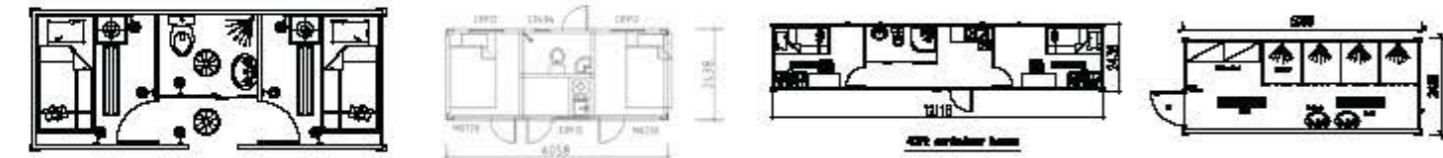
FPC1A 1 open room FPC1B1 office FPC1B2 combined office FPC1B3 combined classroom FPC1C1 reception



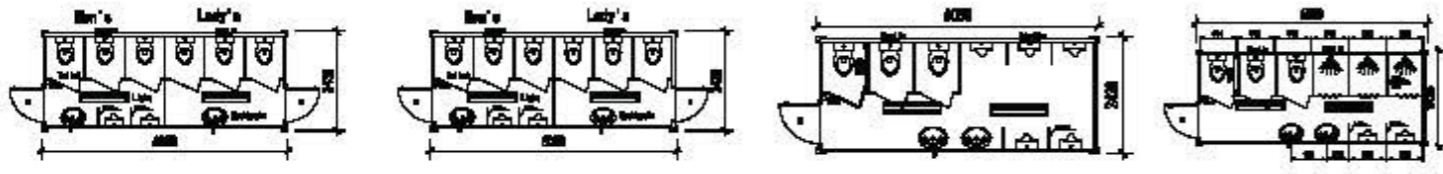
FPC1C2 reception hall FPC1D4 men accommodation FPC1E laundry FPC2 2 bedrooms



FPC3A hotel container FPC3B 1 office room with bathroom ensuite FPC3C apartment with bath room ensuite FPC3D 1 bedroom with bathroom and kitchen



FPC4A 2 bed rooms with shared bathroom FPC4B 2 bedrooms with shared K.S.B FPC4C 40ft living containers FPC5 1 shower container



FPC1A toilet container FPC1B gents and ladies toilet FPC1C gents toilet FPC1S toilet and shower container



Dinning Hall



Office



Kitchen



Bedroom



Interior



Reception Room



Living Room



Showers



Toilets



Reception Hall

FLAT PACK CONTAINER HOUSE



1 Galvanized Floor Beam

2 Welding The Steel Chassis

3 Polishing The Steel Structure



4 Anti-Rust And Paint

5 Embedding The Electricals

6 PVC Flooring Attached



7 Testing



8 Packaging And Trucking to FOB port In China



Production Process & Shipment

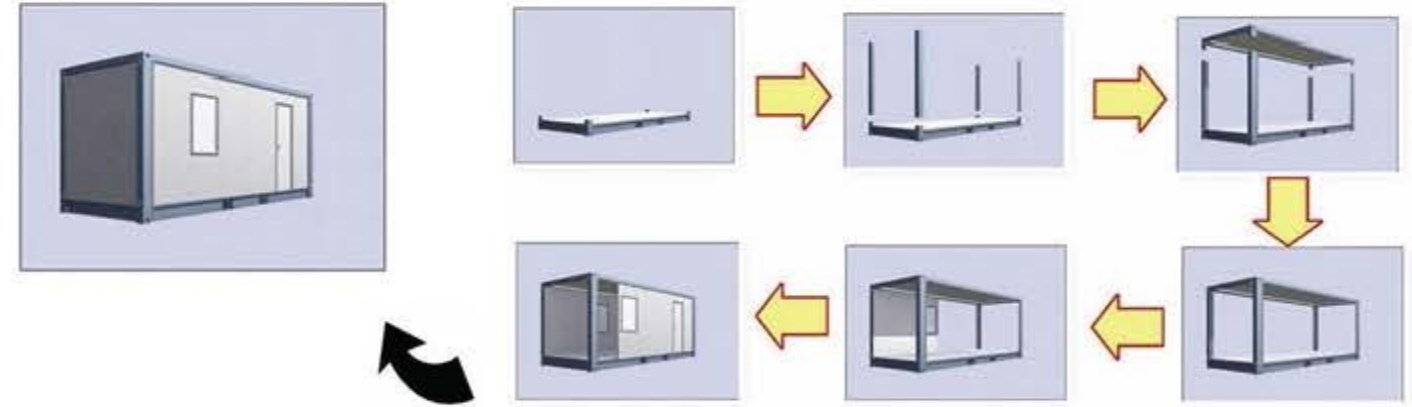


9 Unloading And Trucking locally to Site



10 Satisfied Products

INSTALLATION-Speedy Assembling



PACKAGE AND TRANSPORTATION



PACKING
(Each Unit can be Packed in 1 Flat Pack Piece with Good Protection)



DOMESTIC AND FOREIGN ROAD TRUCKING
(Our Flat Pack Container Is Lockable Into Standard Trailers)



CONTAINER LOADING
(1x40'HQ loads 6 sets of 5850mm Length Flat Packs with Rollers For Easy Roll In And Out into the Shipping Container)

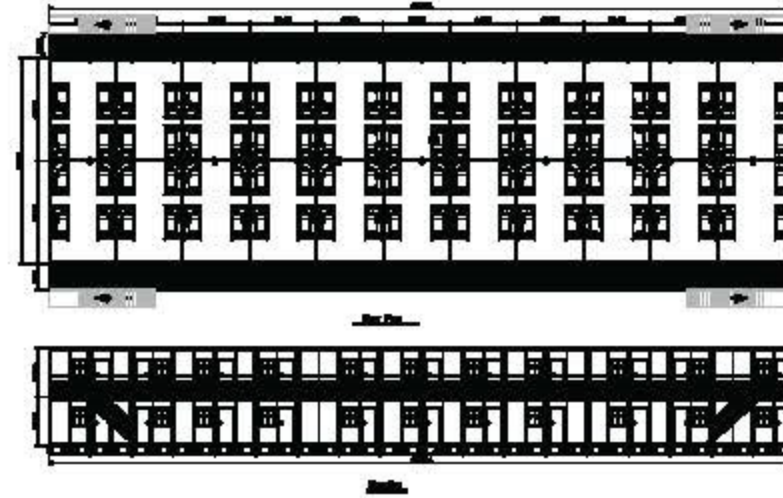


SHIPPER OWNED CONTAINER UNLOADING AT DOCK
(4 Sets Packed as 1x20'HC Package can be Shipped Directly on Boat)

FLAT PACK CONTAINER HOUSE



Model A Luxury Holiday Container Villa



Model E

Doha Labor Accommodation 545 Units



Model D

Island's Seaside Holiday Villa - 8 Containers Combined



FLAT PACK CONTAINER HOUSE



Model G
Kenya Construction Site Camp, 150 Units



Model L Four Floors Flat Pack Container Office Building



FLAT PACK CONTAINER HOUSE



FPC3C
NEW CALEDONIA
APARTMENT PROJECT



Model J
Zhou Shan Wilson Container Showrooms And Offices



ACCESSORIES

Flat Pack Container Series

ACCESSORIES - Integrated Solution



A B C D E1 E2



F1 F2 G1 G2 H1 H2 I1



I2 J K L M

ELECTRICALS AND PLUMBING - CE / SAA / ANSI / China Standard Available



N O P1 P2 P3 P4

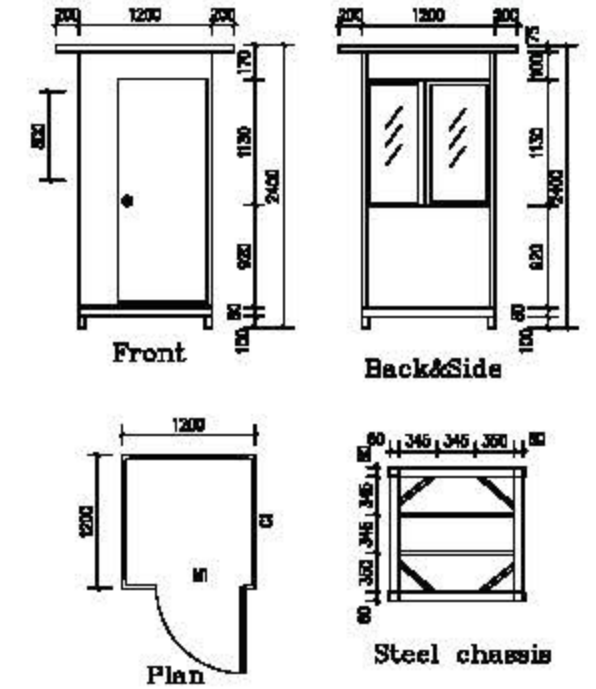


Q R Packed In Inner Box

GUARD HOUSE

ADGH121224

Chile Security Guard House 900 Units Sold



GH121224 Finished Goods With Individule Packing



GH121224 Loading Process

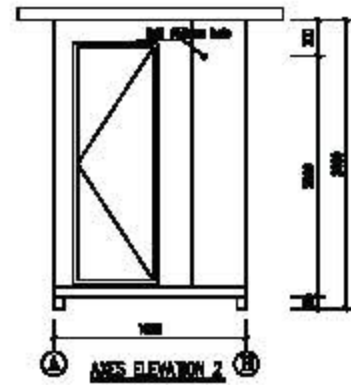
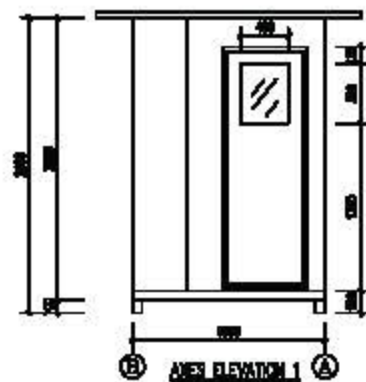
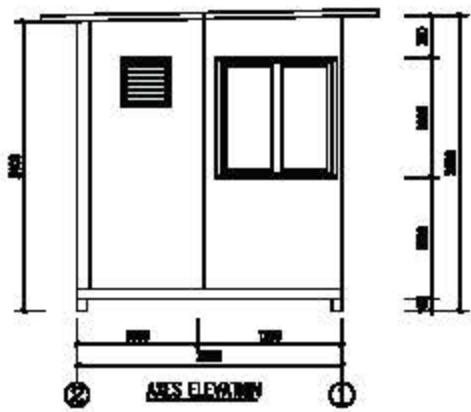
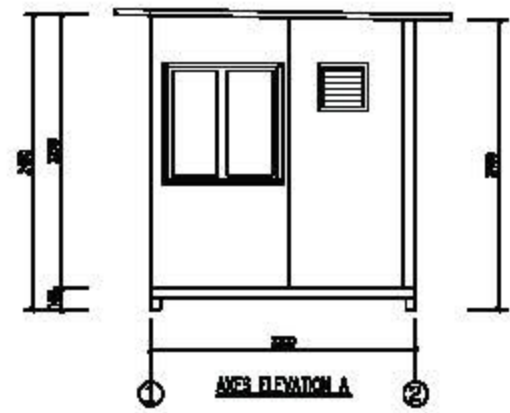
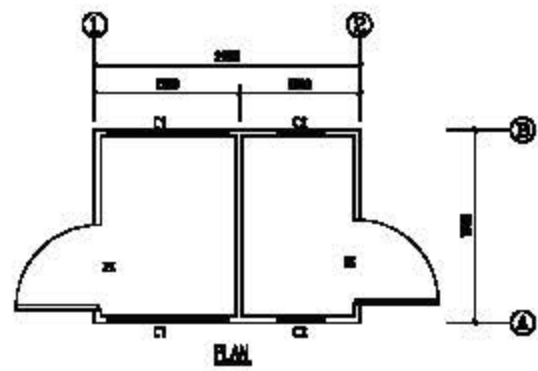


GUARD HOUSE

ADG162224



Chile Prefabricated Guard Room
With Toilet Partition



GUARD HOUSE

Project Cases



G233424



G152520



G222224 - Blue



G222224 - Red

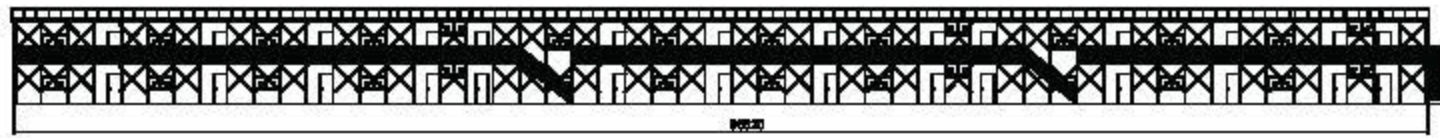


G8 Dubai Police Booth

K MODULAR PREFAB WORK CAMP

ADIK4426

Dubai Rockwool Sandwich Panel Labor Camp

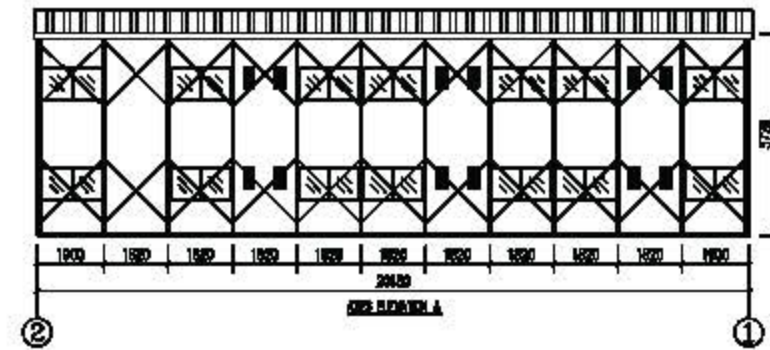


ADIK7116

Philippine Labor Dormitory Building



Installation



Interior



Interior



K MODULAR PREFAB WORK CAMP

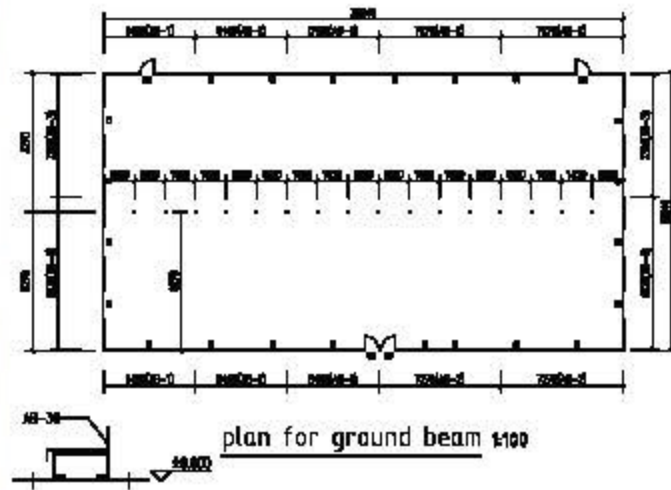
ADIK9163



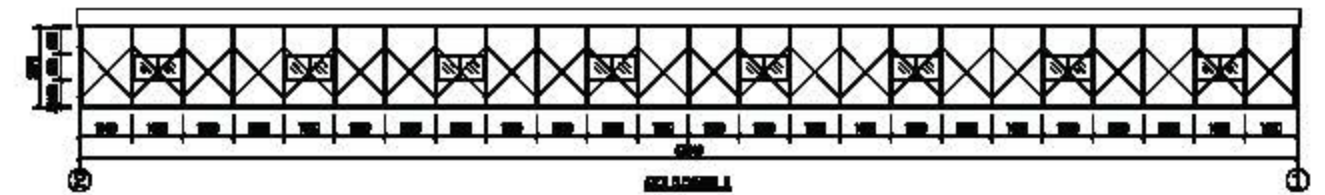
Philippine MDR Canteen 513.57sqm



Modular Design Makes The Work Much More Cost Effective



ADIK3243 "Love for Nepal" Prefabricated Classroom



We are the world, we are the children, we are the ones who make a brighter day...

-Let's start giving!-

K MODULAR PREFAB WORK CAMP

Project Cases



China Railway Construction Site Camp



Hongkong K Modular Office



China Guangxi Labor Accommodation



100 Units of Emergency Shelters after Cyclone Haiyan



Dubai Fireproof Panel Worker Camp



China Country Garden Holdings Ltd's Big Camps



K7246 Philippine Labor Accommodation 1140sqm



K353 Low Cost Living Shelter 2 Bedroom 52.04sqm

K Modules Can Be Duplicated For Unlimited Space!



K3203 Sudan Army Camp 10 rooms 223.75sqm



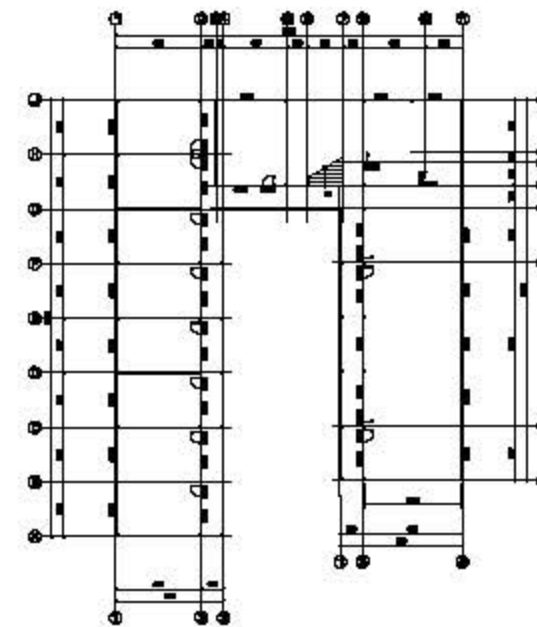
K363 Philippine Classrooms 62.27sqm

T MODULAR PREFABRICATED HOUSE

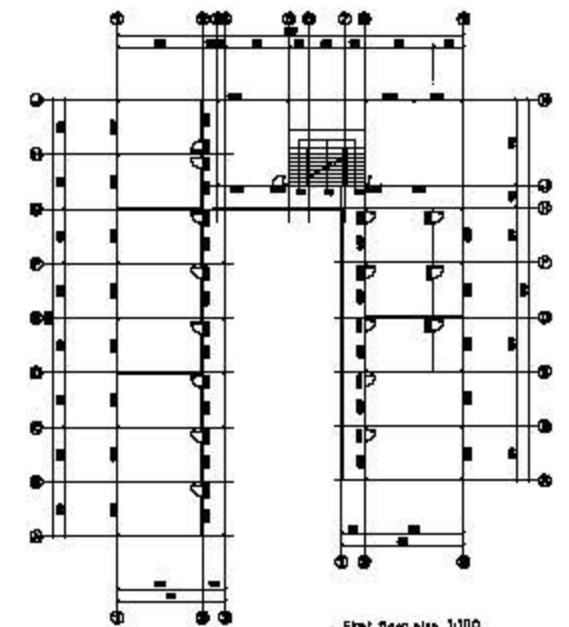
ADIT5186A



Prefab T Modular Office and Living Quarters / U School



Ground floor plan 1:100



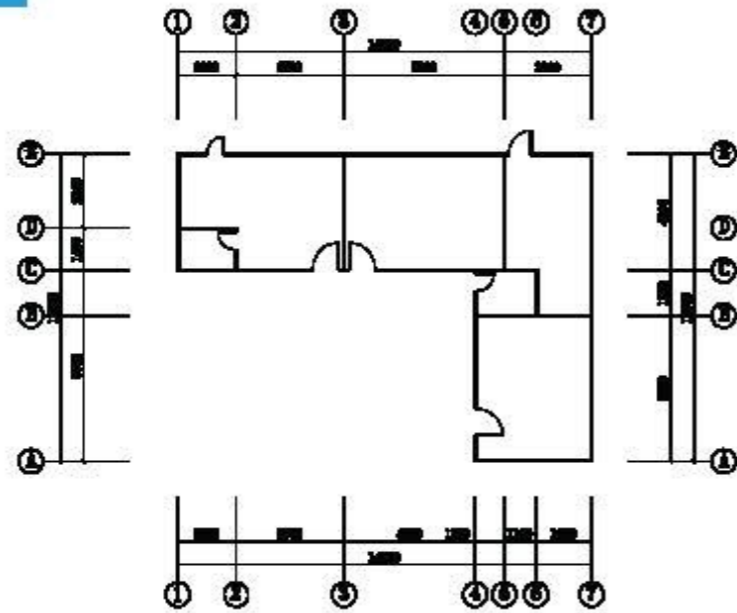
First floor plan 1:100

T MODULAR PREFABRICATED HOUSE

T83



Philippine Prefab Lara Restaurant



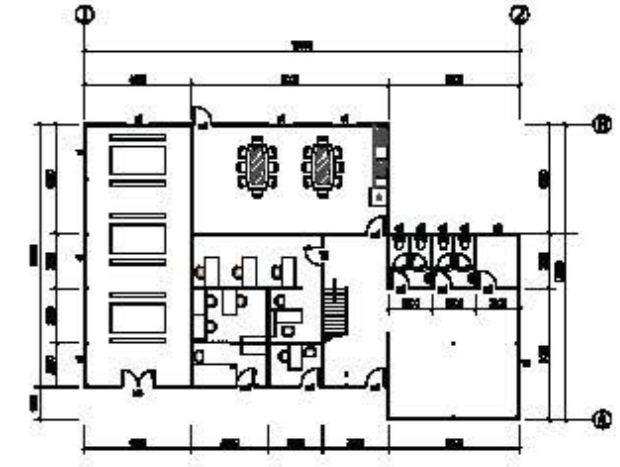
Plans graph

Interior



ADIT1219

Philippine Prefab 2 Floor Site Office



Plan for first floor

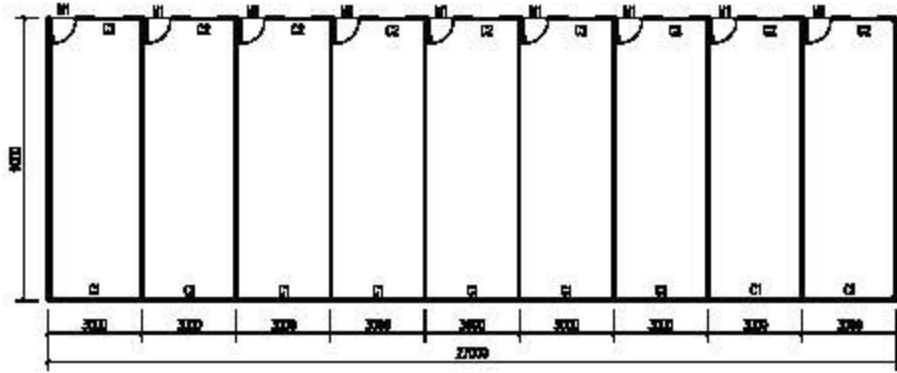
ADIT0812

Angola Social Housing 10 Units



T MODULAR PREFABRICATED HOUSE

ADIT0927



Plan

Philippine Oil Field
Accommodation Prefab



Project Cases

T Modules Can be Customized Exactly According to Client's Specifications



T5603 20 University Student Dormitories 465.75sqm



T16173 Philippine Seaside Canteen 380sqm



T5246U China 34 Rooms School 911.49sqm



T5243 Ecuador Dormitories Ensuit 158.7sqm



T6276 Ecuador 16 Offices 484.07sqm



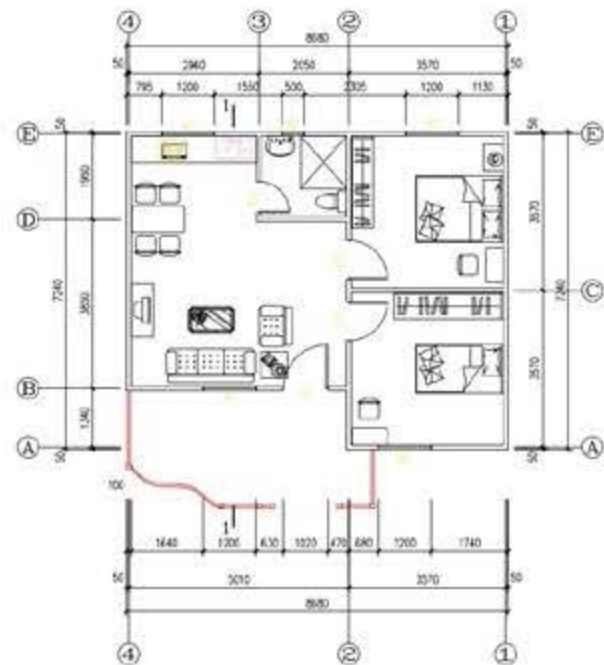
T0718 Philippine 2 Big Classrooms 126sqm

PREFAB HOME

ADIPV56-1



Homes Are High Quality Environmental (HQE) With Modern Exterior Look



Structure Design Standard

1. Seismic grade: 7
2. Fire Resistance Rating: 2 hours

Roof

Materials:
 Roof purlin: Pre-painted steel purlin C120x50x20x2.0mm thickness
 Roof trusses: Pre-painted triangle trusses, 2.0mm thickness

Floor

Materials:
 2.0mm C channel ground track and top coping for wall panels
 Expansion bolts for fixing columns

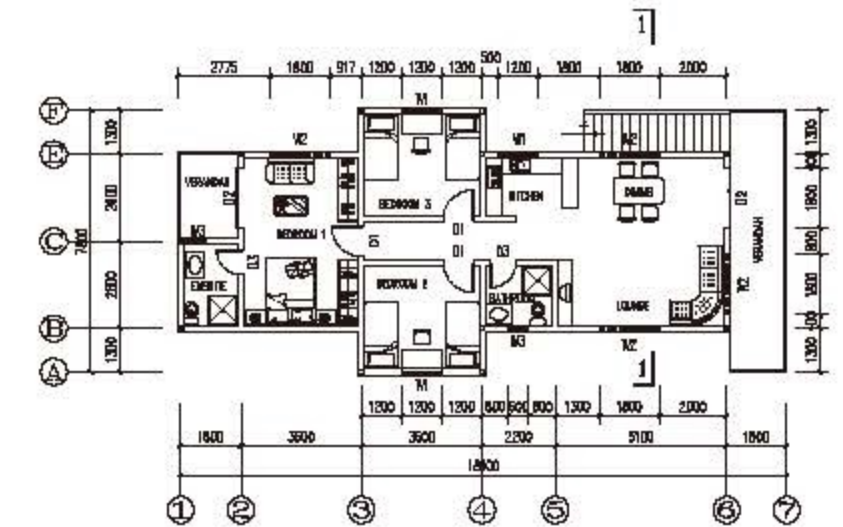
Wall Panel

External & Internal Wall Standard: 80mm MPG Super Panel
 (Water proof, Fire proof, Heat Proof, Sound proof and Earthquake proof, wirings and pippings can be concealed inside MPG super panel.)

ADIPV226



Papua New Guinea Style Stilt Homes Are Suitable For Island Countries



Second floor layout



FAST

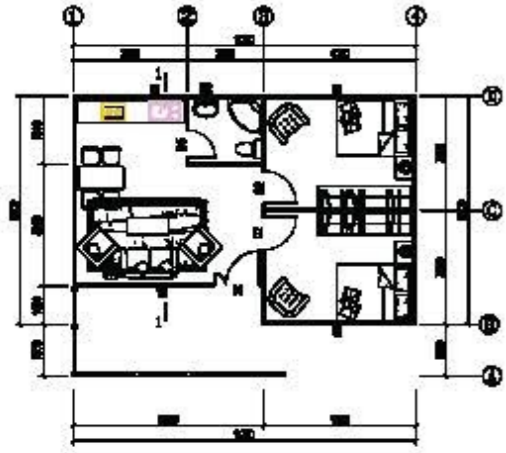
DELUXE

SAFE

COSY

PREFAB HOME

ADIPV0609



Affordable Prefab Mgo House Are Suitable For Social Housing

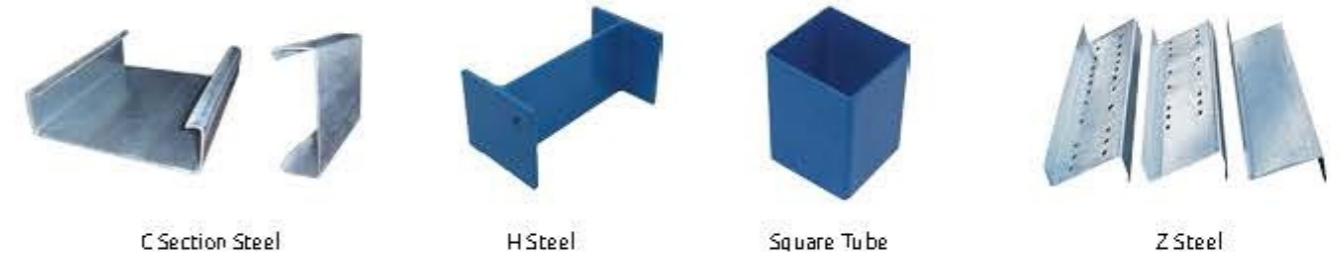


Installation



GENERAL ACCESSORIES

STEEL ELEMENTS



C Section Steel

H Steel

Square Tube

Z Steel

WALL AND ROOF SYSTEM



EPS Wall Sandwich Panel

EPS Roof Sandwich Panel

PU Wall Sandwich Panel

PU Roof Sandwich Panel

Rockwool Wall Sandwich Panel

Rockwool Roof Sandwich Panel

Single Steel Sheet

MGO Sandwich Panel

DOORS AND WINDOWS



Steel/Wooden Door

Aluminum Sliding Door

Sandwich Panel Door

Aluminum Class Louvre Window

Aluminum Sliding Window

Aluminum Awning Window

OTHERS



Construction Grade Plywood 18mm

DIY PVC Flooring

Aluminum Ceiling 600X600

Fiber Cement Ceiling 1220X2440

PVC Cladding