

Flat Pack Container

Installation details

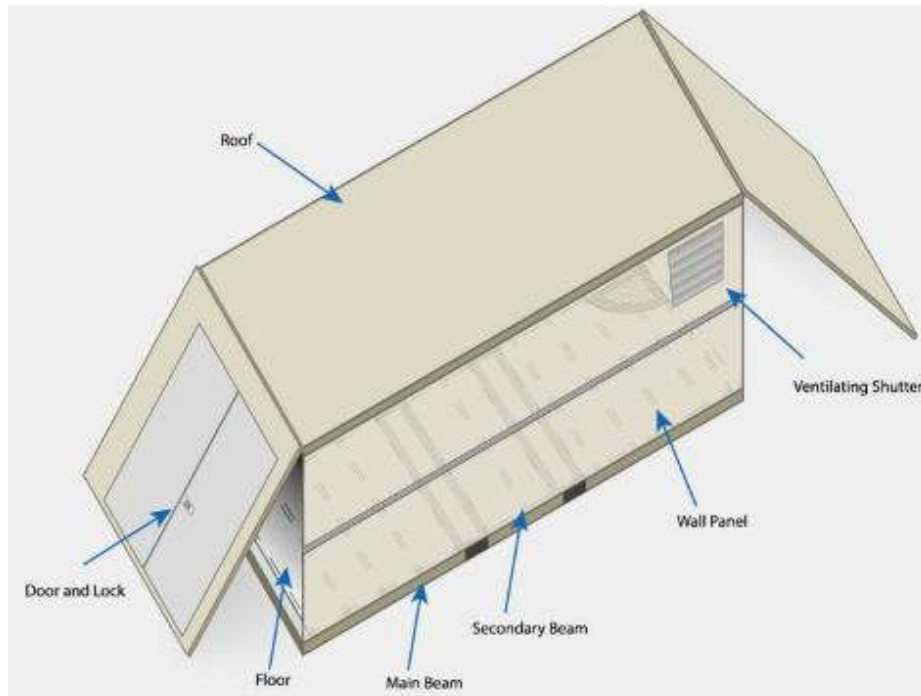


Flat Pack Container

→ Main material

Material list			
No.	Component	Material	Refer photo
1	Chassis	C Chanel Steel	
	Purlin	10 # C Steel	
	Flooring	15mm Cement Board	
2	Wall Panel	50mm EPS Sandwich Panel	
3	Corner Column	3.0mm Cold Form Steel	
4	Roof Structure	3.0mm Cold Form Steel	
5	Roof Panel	75mm EPS Sandwich Panel	
6	Door Panel	Steel Security Door	
7	Window	PVC Window	
8	Accessories	Nuts、 Tapping Screw、 Rivet、 Sealant Ect.	

Folding container house



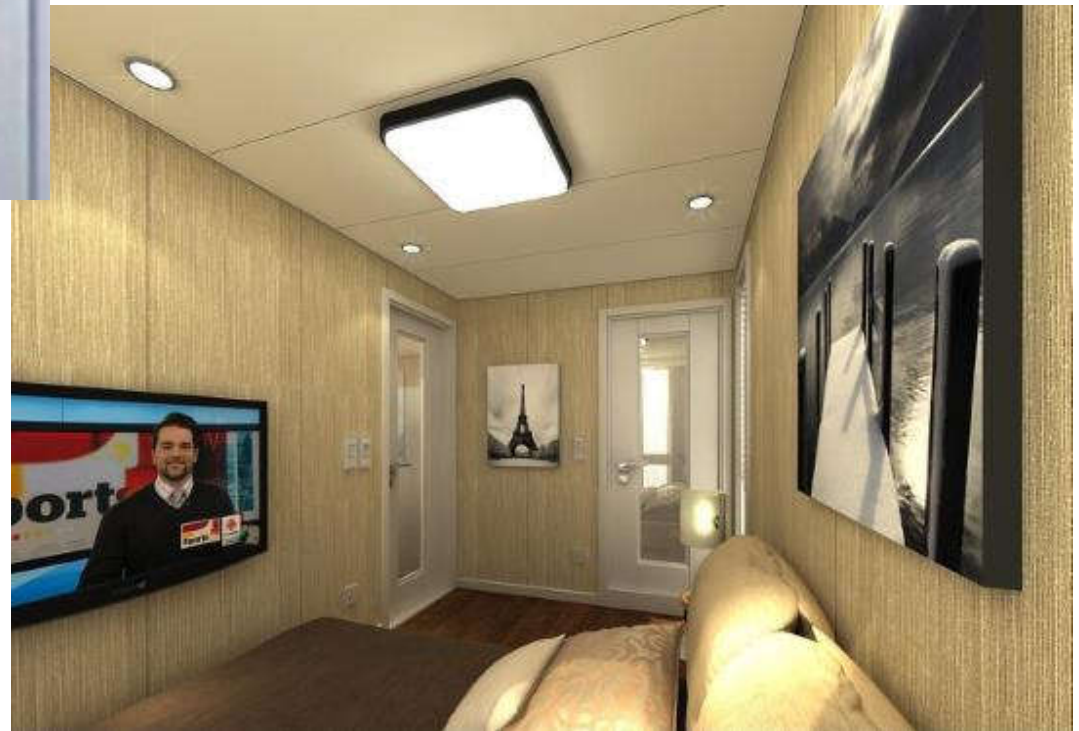
Folding container house



Folding container house



Interior design



Folding container house

Installation

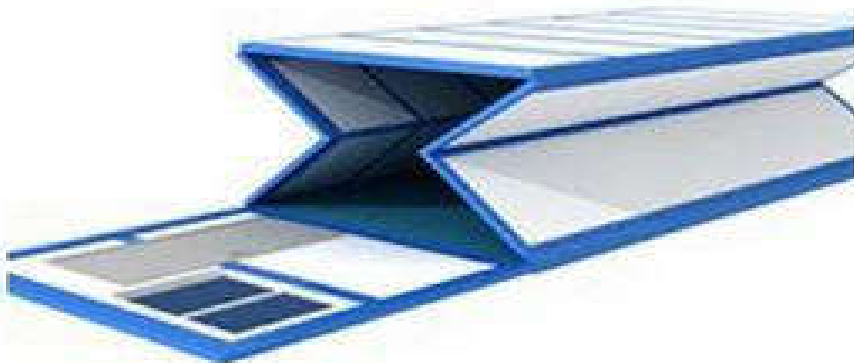
1



2



3



4



Folding container house

→ Main material

No.	Component	Material	Photo
1	Chassis	3.0 mm Cold form steel	
		8# C steel purlin	
		15 mm Cement board	
2	Wall panel	50 mm EPS sandwich panel	
	Side wall beam	2 mm Cold form steel	
3	Roof beam	2 mm Cold form steel	
		50 mm EPS sandwich panel	
4	Window	PVC Sliding window	
5	Door	Steel security door	
6	Accessory	Gal.tapping screw, rivet, bolt&sealant	

Container house -Project Case



Container house

Project Case

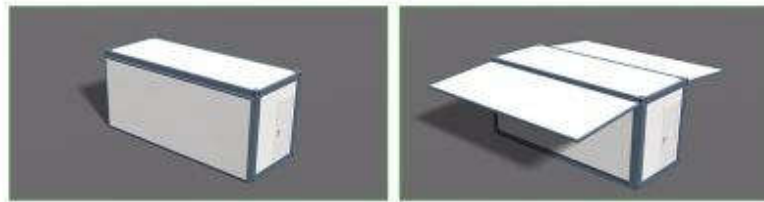


Container house

Project Case



Expandable container house



Flat Pack Packing

Roof Installation



Floor Installation

Wall Installation

Expandable House Finished

