

ADVANTAGES OF LIGHT STEEL STRUCTURE HOUSE

1.THERMAL INSULATION

With the leading global wall structure thermal insulation technology. The 'double insulation' and 'double insulation' is that external wall inner insulation and external wall insulation, 'double layer' is that open air layer and closed air layer.

Compared with traditional building, the energy saving for this type of building is more than 75%, can effectively avoid condensation in winter, get damp in summer, to ensure indoor warm in winter and cool in summer.

2.ANTI- SEISMIC AND WIND RESISTANCE

It can meet the magnitude 9.0 earthquake requirement.

Light steel ribbed beams flexible connection bolt, screw, effectively absorb seismic energy, wall body and foundation set up resistance, resistance to shear connectors, and overall weight is light, is only about 1/6 of the traditional concrete building, so the seismic performance is superior is superior than concrete houses.

It can resist 12 grades typhoons

Each part of the roof, floor, wall, foundation through special parts and reliable connection, can resist grade 12 typhoons.

3.ROOFING LOAD- BEARING AND FIREPROOFING

Building snow load can be separately designed according to climate conditions, can meet the requirements of 1.5 meters thickness of snow load.

Fire endurance 2.5h(level2) design standards.Using proprietary technology in areas such as the wall, floor, it can meet the biggest refractory limit 3h.

4.SOUND INSULATION

Perfect sound insulation, shock absorption technology, meet the national building sound insulation standards, especially in the most sensitive to the human ear within 250-1000 hz audio, focus on the strengthening of professional processing, create quiet and comfortable living environment.



5.MOISTURE PROOF VENTILATION

Unique design of open air layer by using the theory of space thermal cycle, air convection and indoor ventilation between the main structure and exterior adornment layer is equipped with one-way breathable membrane indoor humidity can give fully from inside to outside, and the indoor humidity is unable to input, effective moisture or other decadent gas into the main body structure.

6.DURABLE

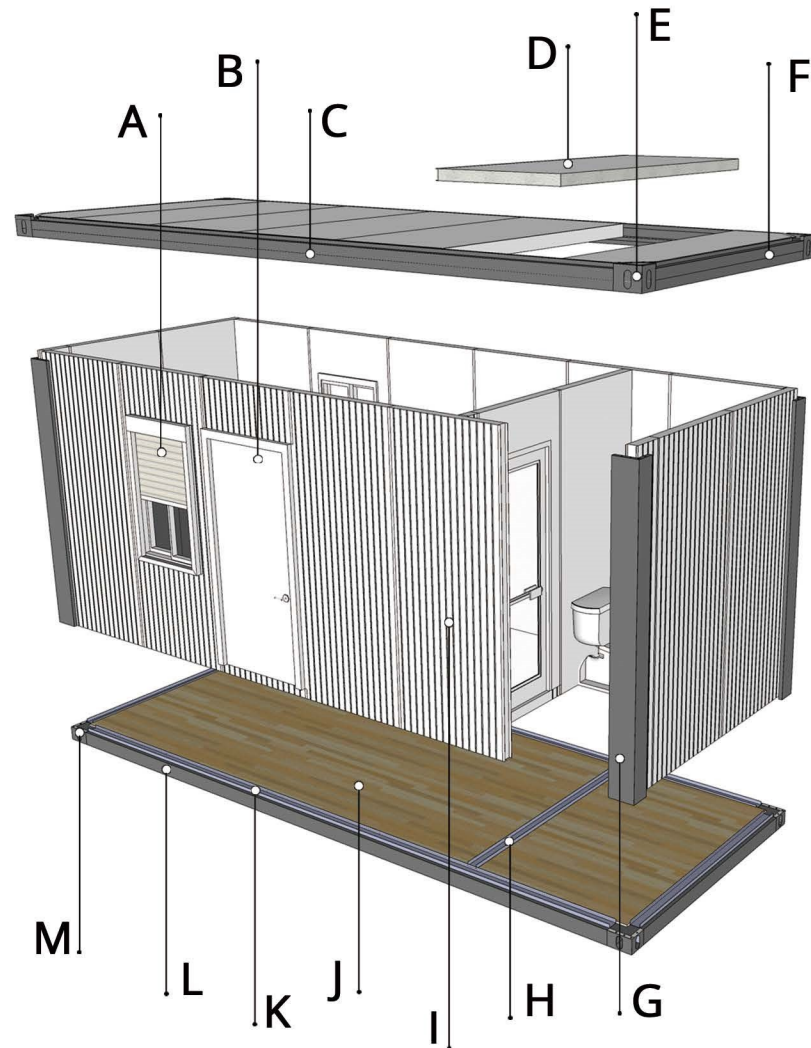
The structure life time 90 years.The parts of the structure all are galvanized anti-corrosion treatment, thus can protect just prevent corrosion, prolong the steel service life; Using new type of light weight enclosure materials, no-combustible, mildew, bug eat by moth.

7, ENERGY CONSERVATION AND ENVIRONMENTAL PROTECTION

Energy saving: energy consumption reduced by 60%-90%,water-saving: dry construction work, it is a traditional construction water consumption by 10% material-saving: 90% recyclable building materials Environmental protection: circulation, pollution-free building system.

PREFAB CONTAINER HOUSE

- A Shutter Window
- B Security door
- C Galvanized sheet frame
- D EPS sandwich panel for roof
- E Corner fittings
- F Galvanized sheet frame
- G Galvanized steel column
- H Galvanized steel channel
- I EPS sandwich panel for wall
- J Wood floor
- K Galvanized steel channel
- L 12# Galvanized steel channel
- M Corner fittings



CONTAINER HOUSE SERIES



CONTAINER-0001



CONTAINER-0002



CONTAINER-0003



CONTAINER-0004



CONTAINER-0005



CONTAINER-0006



CONTAINER-0007



CONTAINER-0008



CONTAINER-0009



CONTAINER-0010



CONTAINER-0011



CONTAINER-0012



CONTAINER-0013



CONTAINER-0014



CONTAINER-0015



CONTAINER-0016

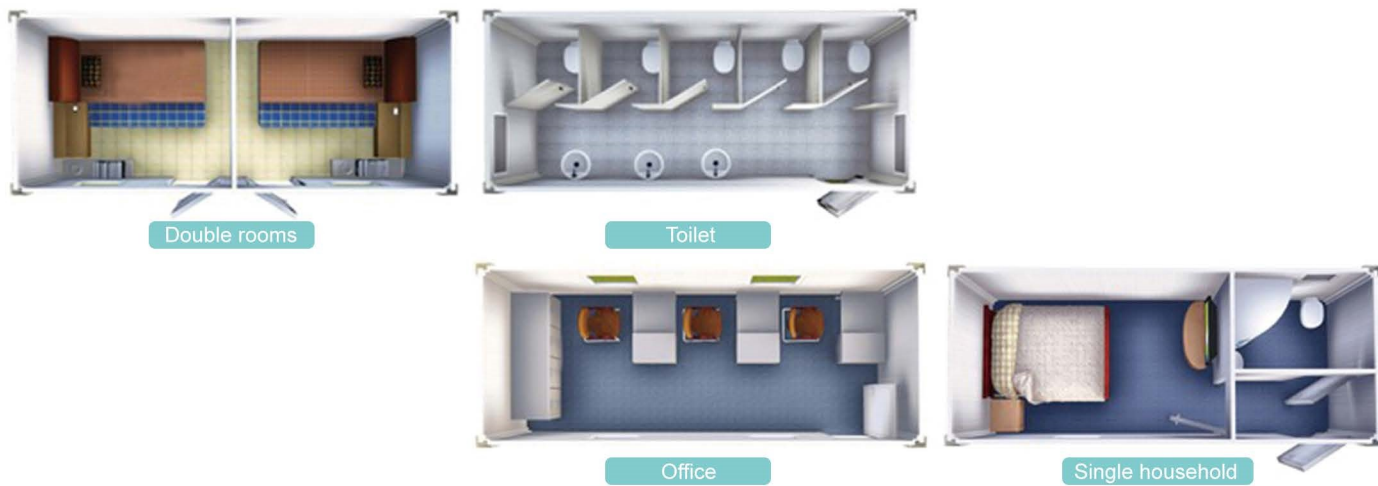
Sort	Name	Specification
Dimension	Length	5950mm
	Width	2250/2400mm
	Height	2700mm
Standard configuration	Wall	75mm EPS or 100mm sandwich panel(glasswool panel),0.5mm color steel sheet and 15kg/m3 polystyrene foam density inside Permitted loading is 0.6KN/m2 and Coefficient of thermal conductivity is K=0.455W/m2k
	Roof	75mm EPS or 100mm sandwich panel(Glasswool panel),0.5mm color teel sheet and 15kg/m3 polystyrene foam density inside Permitted loading: 1.6KN/m2 and Coefficient of thermal conductivity
	Base	galvanized steel sheet+Galvanized square pipe
	Door	Aluminium alloy/PVC Door
	Window	Aluminium alloy/PVC window
	Post	galvanized steel sheet
Optional	Decoration	Aluminium wall panel/Pvc panels/PU panels
	Electric system	provide plan design and construction

PREFAB CONTAINER HOUSE

INTRODUCTION

prefabricated house container is convenient to assemble.Space is also flexible.Bolt connection between each unit is safe and reliable.The production period is about 30days.The whole house energy conservation and environmental protection, can be recycled, can also be repeatedly disassembled.

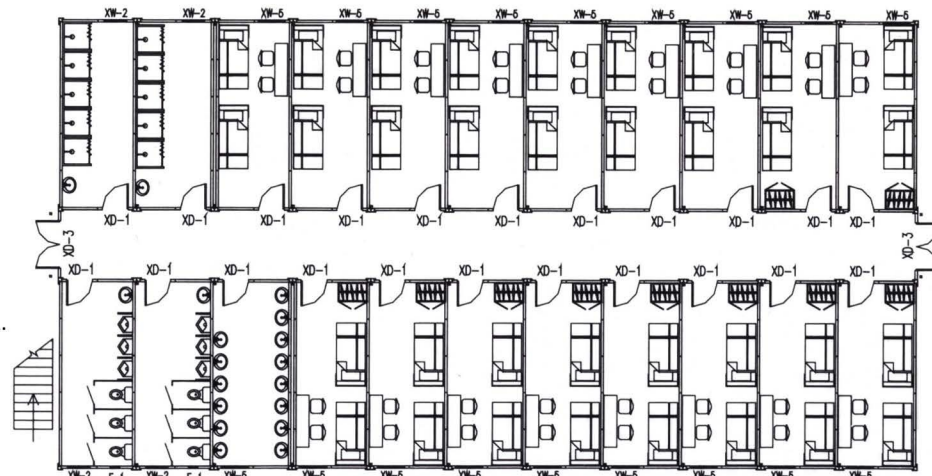
CONTAINER HOUSE INDOOR LAYOUT



SPECIFICATION

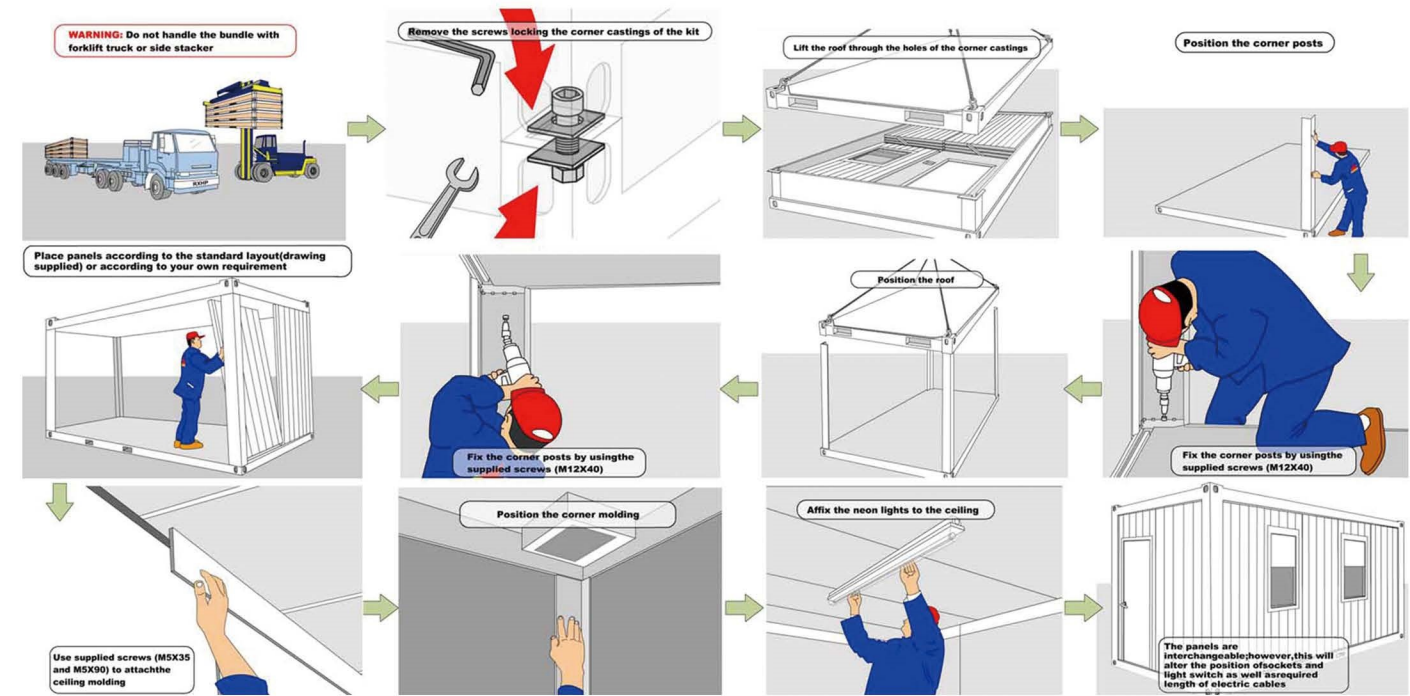
Unit size:
L5950mm* W2250mm*H2600mm

The number:
according to customer's requirement.

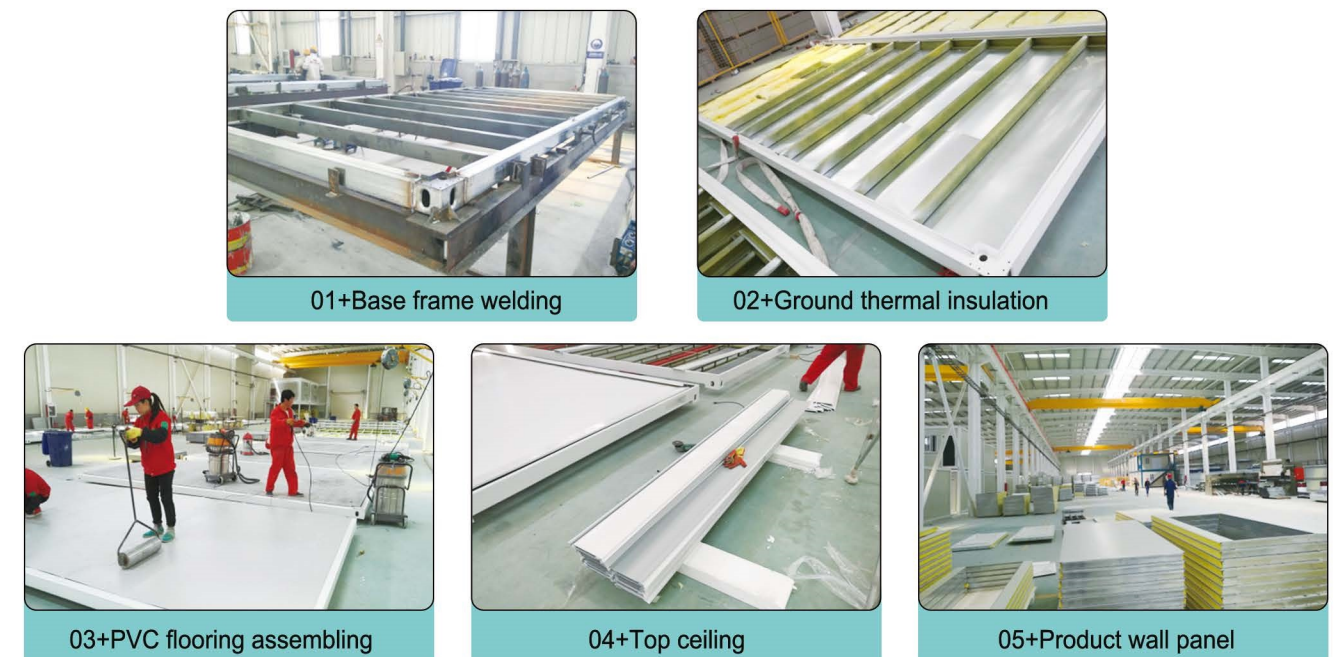


ASSEMBLING PROCESS

This kind of house needs to be assembled on site. Firstly assemble a single house, and put each of them together. It is quick and convenient.

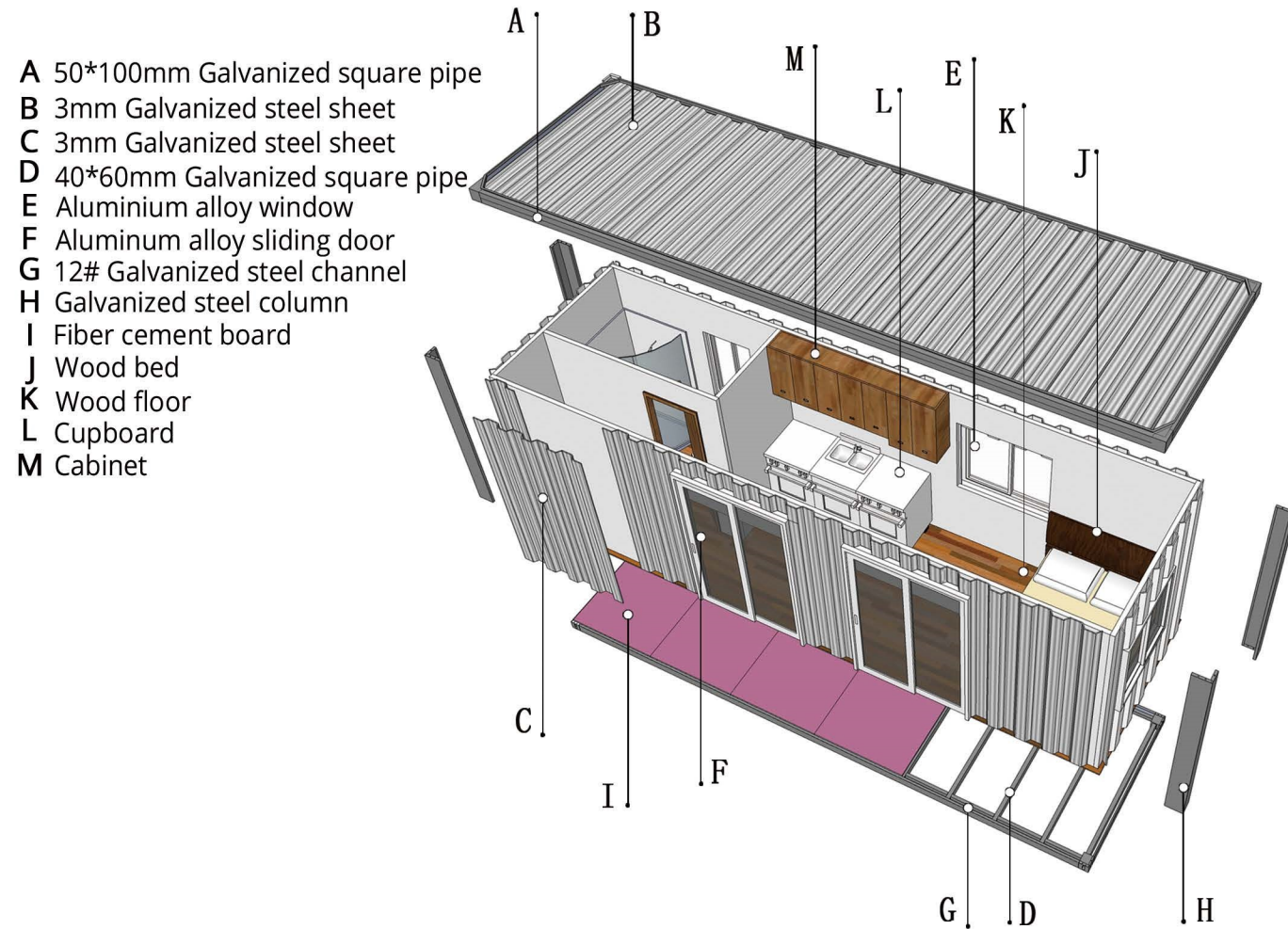


PRODUCTION PROCESS



WELDING CONTAINER HOUSE

WELDING CONTAINER HOUSE SERIES



WELDING0001



WELDING0002



WELDING0003



WELDING0004



WELDING0005



WELDING0006



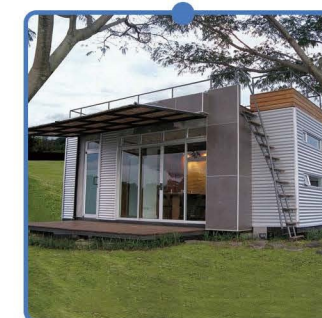
WELDING0007



WELDING0008



WELDING0009



WELDING0010



WELDING0011



WELDING0012



WELDING0013



WELDING0014



WELDING0015



WELDING0016

ITEM	DETAIL
Dimension(mm)	5850*2250*2450(length*width*height)
Frame	Galvanized steel frame
Floor	15mm plywood/wood floor
Wall	3mm galvanized steel+EPS /PU/rock wool sandwich panel
Roof	EPS sandwich panel 10mm OSB ceiling
Window	Aluminium alloy/PVC sliding window with double glass
Door	Steel security door/Aluminium alloy/PVC Door

WELDING CONTAINER HOUSE CASE



A Living C Bathroom
B Dining D Bedroom



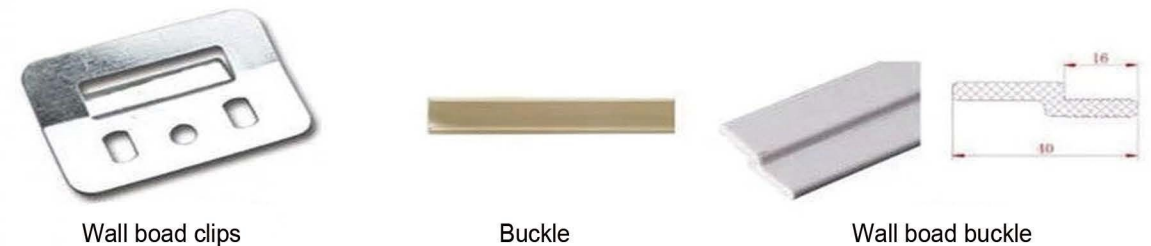
CONTAINER TRANSFORMATION PROCESS



PREPARATION TOOLS



REQUIRED ACCESSORIES

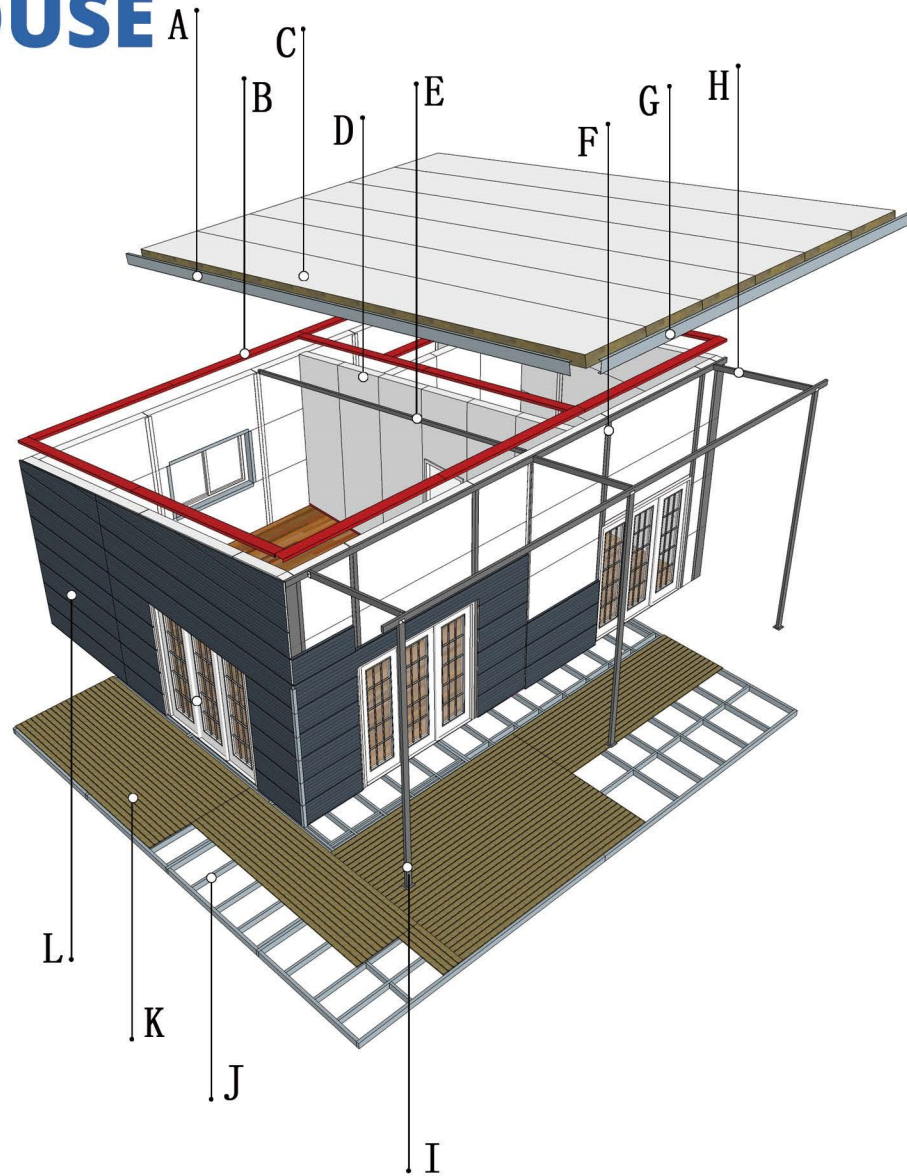


1. Clean the wall.
2. Insert stainless steel fasteners directly into the bottom of the wall board fixed on the rough surface (This method is suitable for the smooth wall surface).



PREFAB FAMILY HOUSE

- A Steel weatherboard
- B Galvanized trough
- C Rock wool sandwich panel for
- D Rock wool sandwich panel for
- E Galvanized purlin
- F Galvanized column
- G Steel weatherboard
- H Galvanized purlin
- I Galvanized column
- J 40*60mm Galvanized square
- K Antiseptic wood
- L Decoration for wall



PREFAB HOUSE SERIES



Family House0001



Family House0002



Family House0003



Family House0004



Family House0005



Family House0006



Family House0007



Family House0008



Family House0009



Family House0010



Family House0011



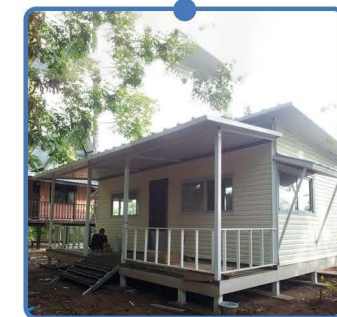
Family House0012



Family House0013



Family House0014



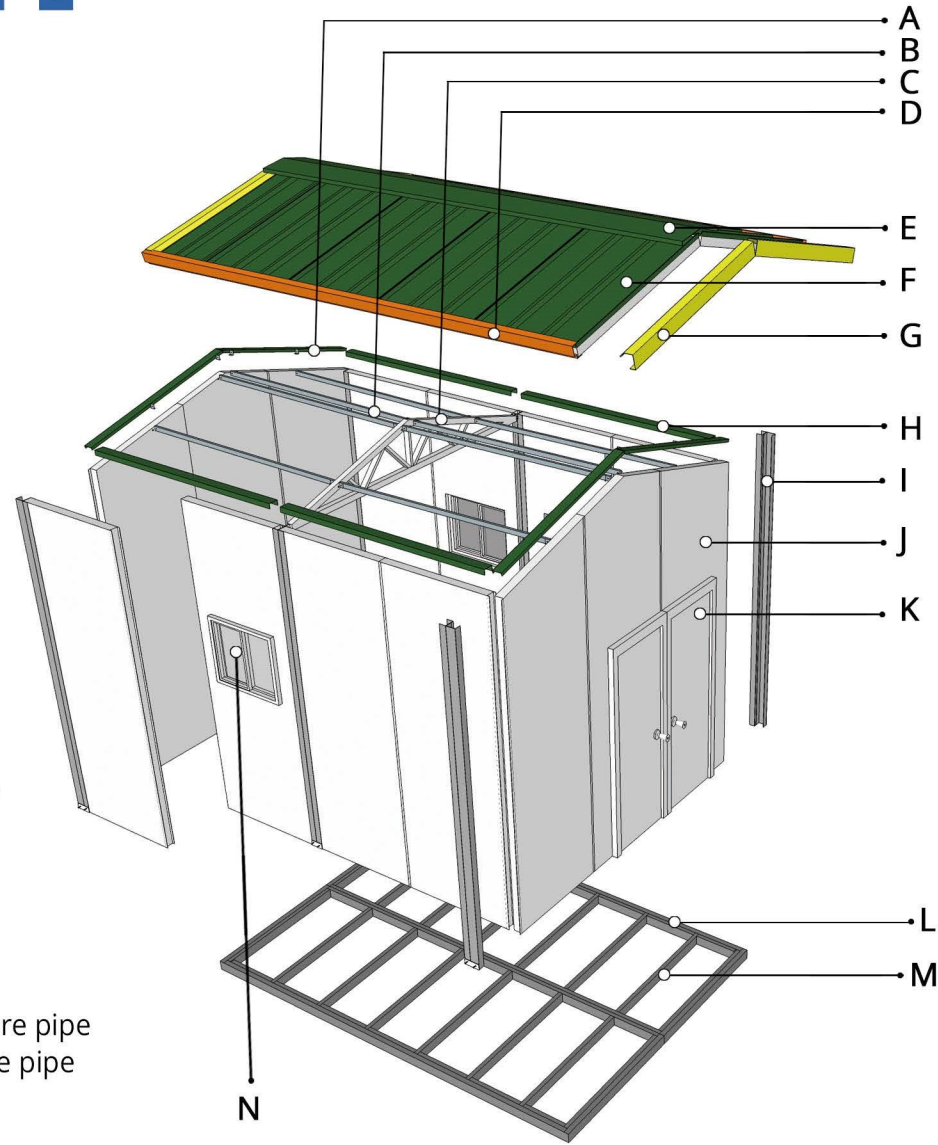
Family House0015



Family House0016

Item	Specification
Size	8*6*2.4/2.6*(L*W*H)or according to customer's requirement
Main frame	Galvanized steel+50*100mm square tube+0.8/1.2/2.0mm steel sheet
Wall	EPS/PU/rock wool/glass wool sandwich panel
Roof	EPS/PU/rock wool/glass wool sandwich panel
Floor	15/18mm fiber cement+plastic/wood floor
Door	PVC/Aluminum alloy/fire door,the size according to customer's requirement
Window	PVC/Aluminum alloy window,the size according to customer's requirement
Accessory	Bolts,nails, decoration lines
Installation	Field assessment

PREFAB HOUSE DETAIL DUAL SLOPE



- A Galvanized trough
- B Galvanized purlin
- C Galvanized steel bracket
- D Steel weatherboards
- E Steel ridge tile
- F EPS sandwich panel for roof
- G Steel weatherboards
- H Galvanized trough
- I Galvanized trough
- J EPS sandwich panel for wall
- K Security door
- L 50*100mm Galvanized square pipe
- M 40*60mm Galvanized square pipe
- N PVC window

PREFAB HOUSE SERIES



Family House 0017



Family House 0018



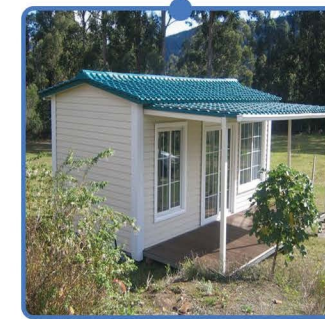
Family House 0019



Family House 0020



Family House 0021



Family House 0022



Family House 0023



Family House 0024



Family House 0025



Family House 0026



Family House 0027



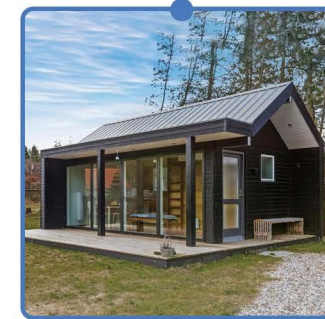
Family House 0028



Family House 0029



Family House 0030



Family House 0031



Family House 0032

Item	Specification
Size	According to your requirement
Frame material	Light steel Q235B, Q345B
Wall material	50-150mm EPS/PU/rock wool/glass wool sandwich panel
Roof material	50-150mm EPS/PU/rock wool/glass wool sandwich panel
Color	Red/blue-sea/off-white or according to your requirement
Window	Aluminum alloy/PVC sliding window
Door	Aluminum alloy sliding door/steel door/PVC door/fire door

PREFAB HOUSE CASE



bathroom



bedroom

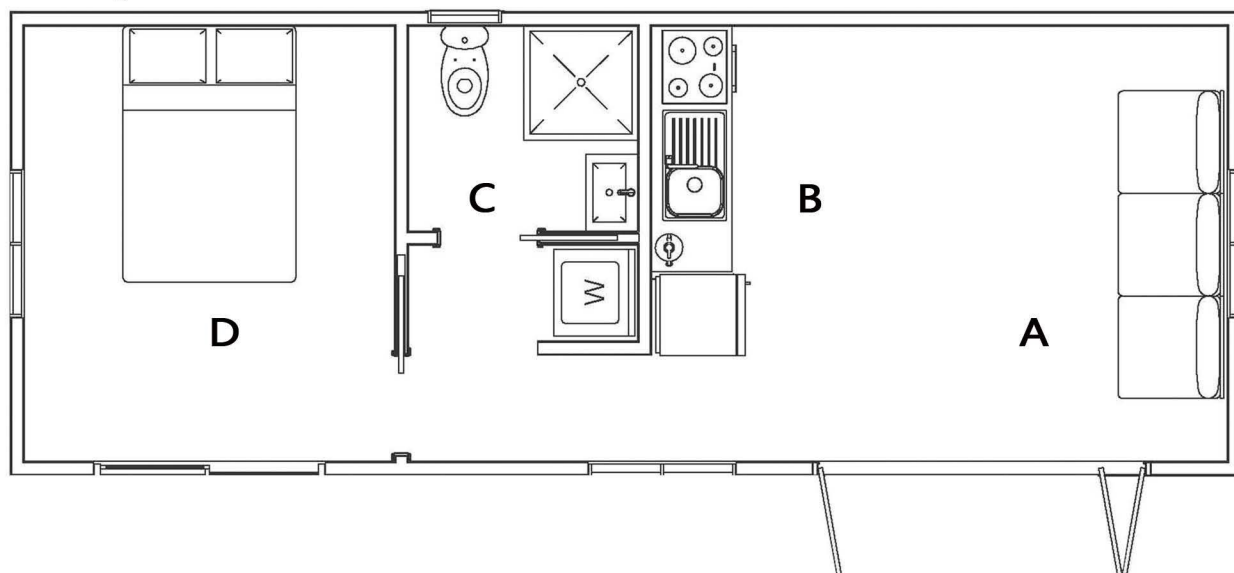


living room

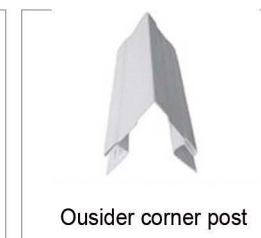


kitchen

A Living C Bathroom
B Dining D Bedroom



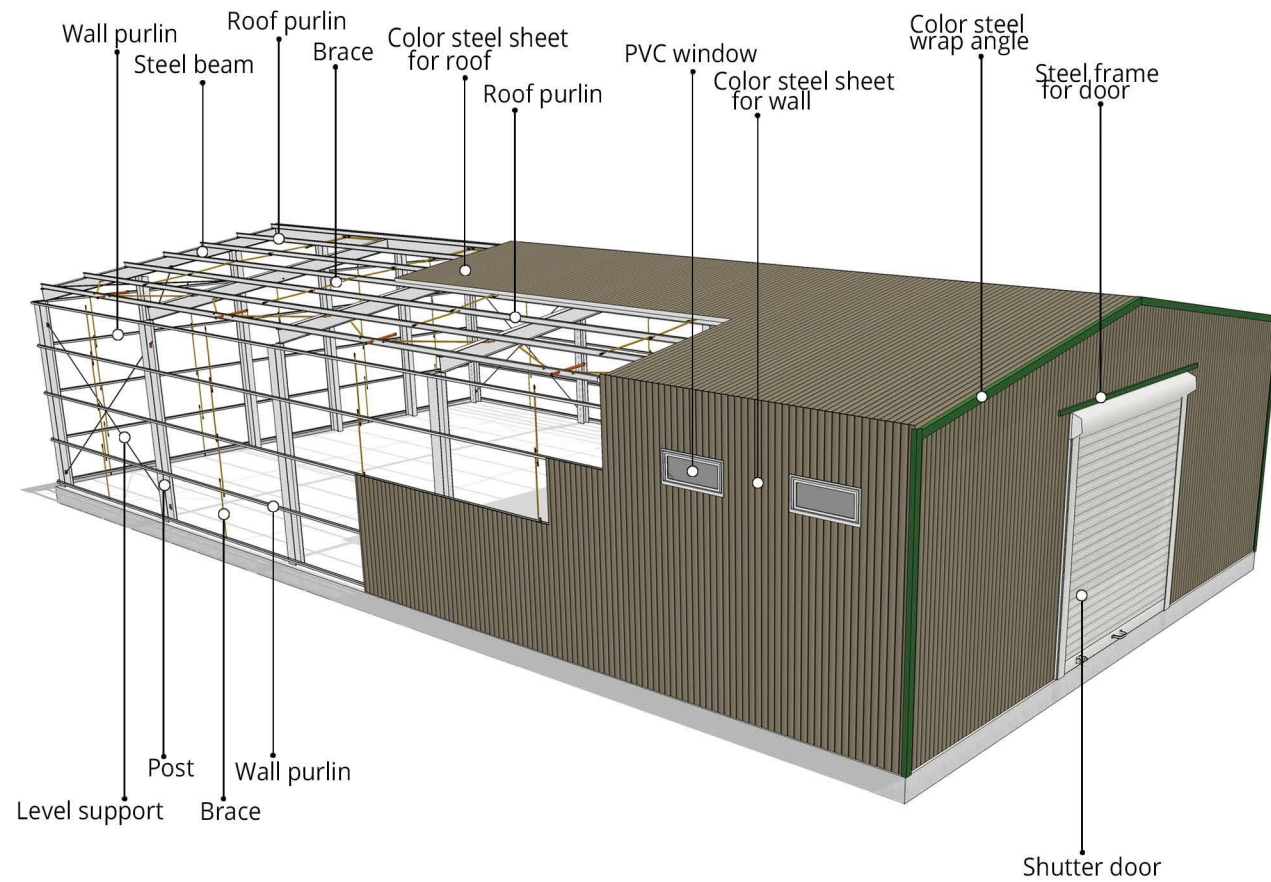
ACCESSORIES



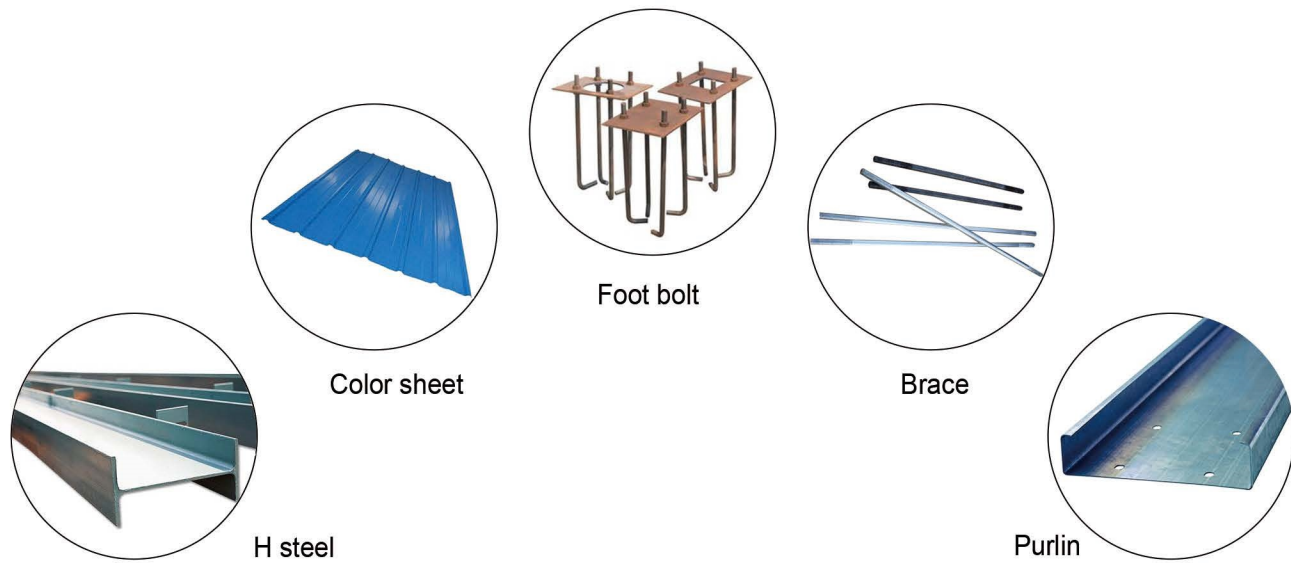
INSTALLATION PROCESS



STEEL CONSTRUCTION



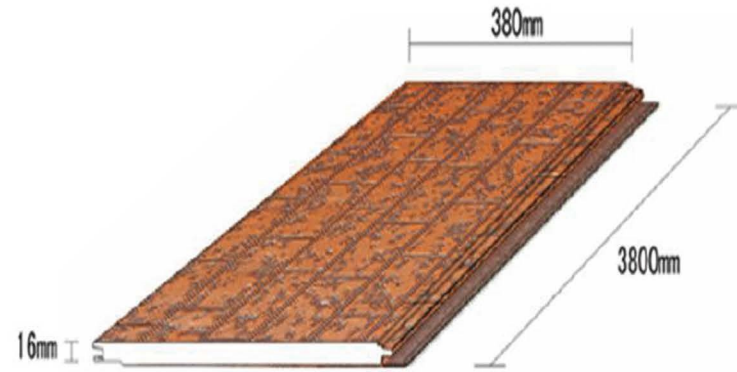
ACCESSORIES



STEEL STRUCTURE



EXTERIOR PU DECORATIVE PLATE



TESTING REPORT OF PHYSICAL PERFORMANCE

Testing Item	Technical requirement	Testing result	Testing method
Thermal conductivity (core material) W/(m*k)	≤0.025	0.025	GB/T 10295-1988
compressive strength, kPa	≥120	29	GB/T 8813-1988
water absorption, %	≤5	8	GB/T 8810-2005
density of the panel (three layers), kg/m ³	≥3.5	3.78	GB/T 6343-1995
bending resistance under 0.5KN, mm	≤18.3	13.3	GB/T 9341-2000
cementation strength, Mpa	≥0.10	0.238	JC/T 868-2000
smog resistance (h)	≥1000h	color is not changed and there is no spot of erosion	QB/T 3826-1999
weather resistance (h)	≥1000h	There is no damage on the surface and color changes from level 4-5	GB/T 16442.2-1999

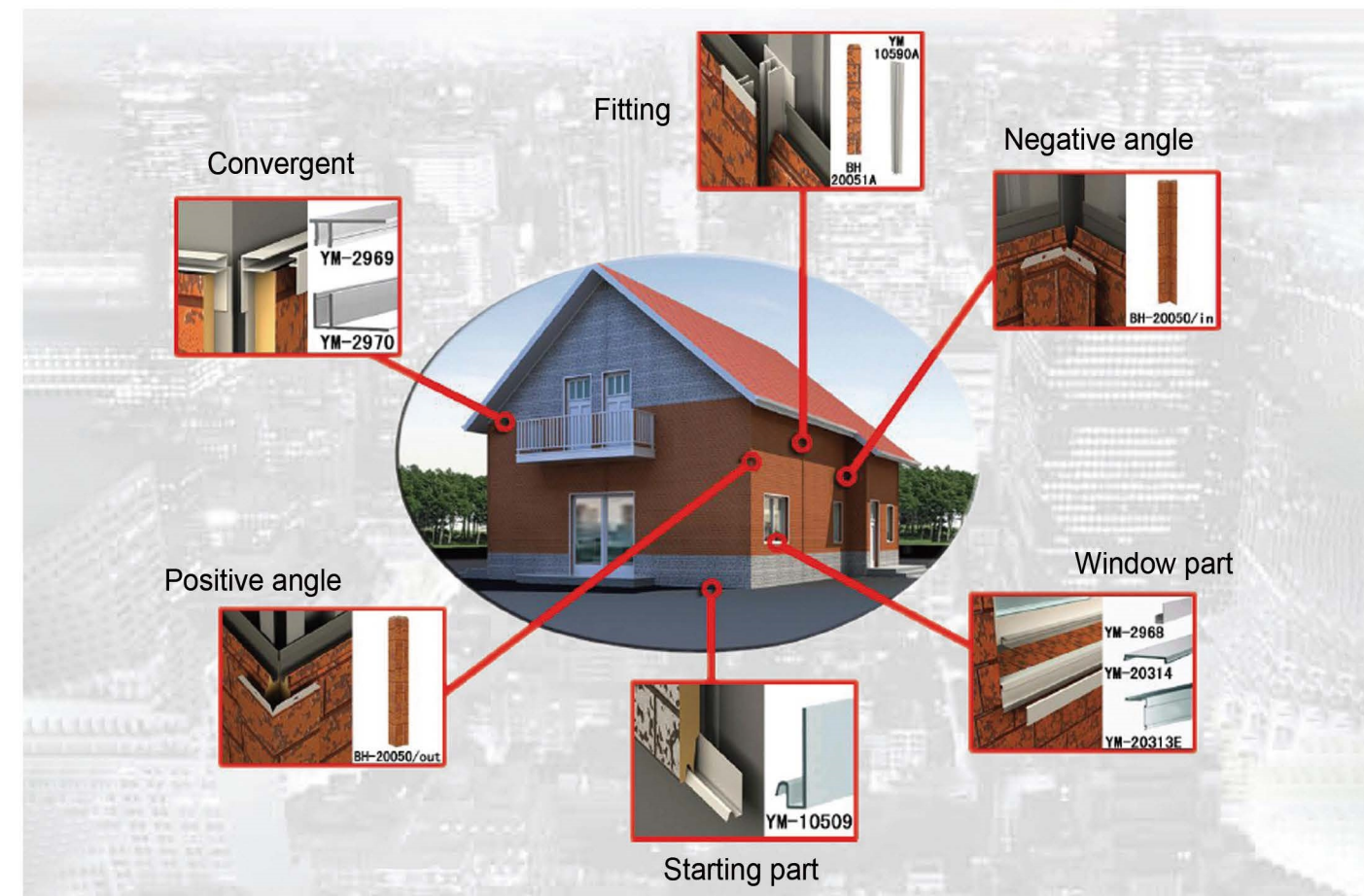
WOOD STYLE-PVDF PAINT



FINE BRICK STYLE



COARSE BRICK STYLE



INTERIOR WALL DECORATION BOARD

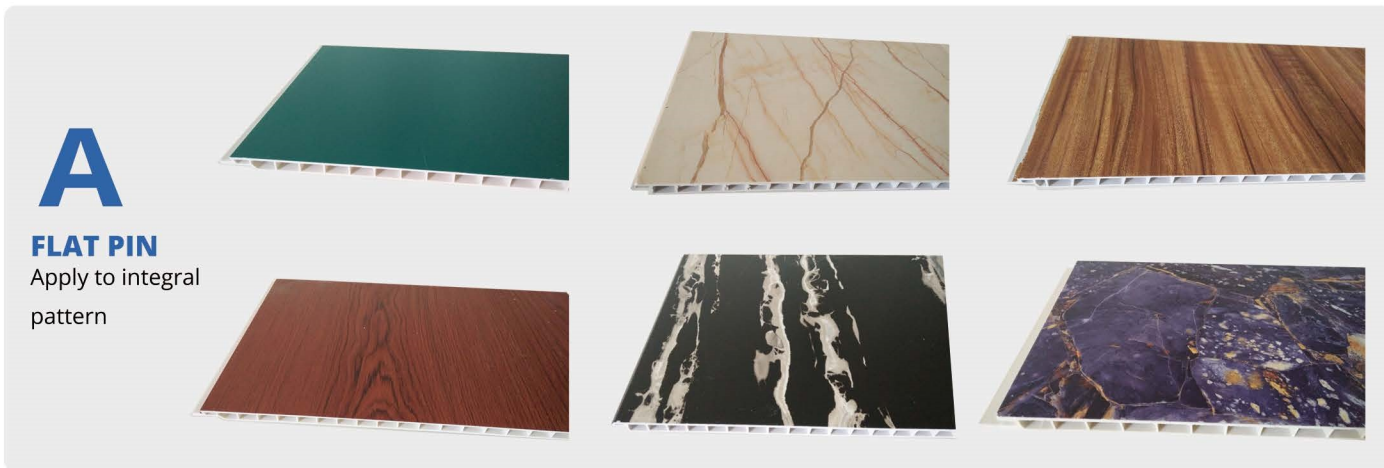
PRODUCT DETAILS



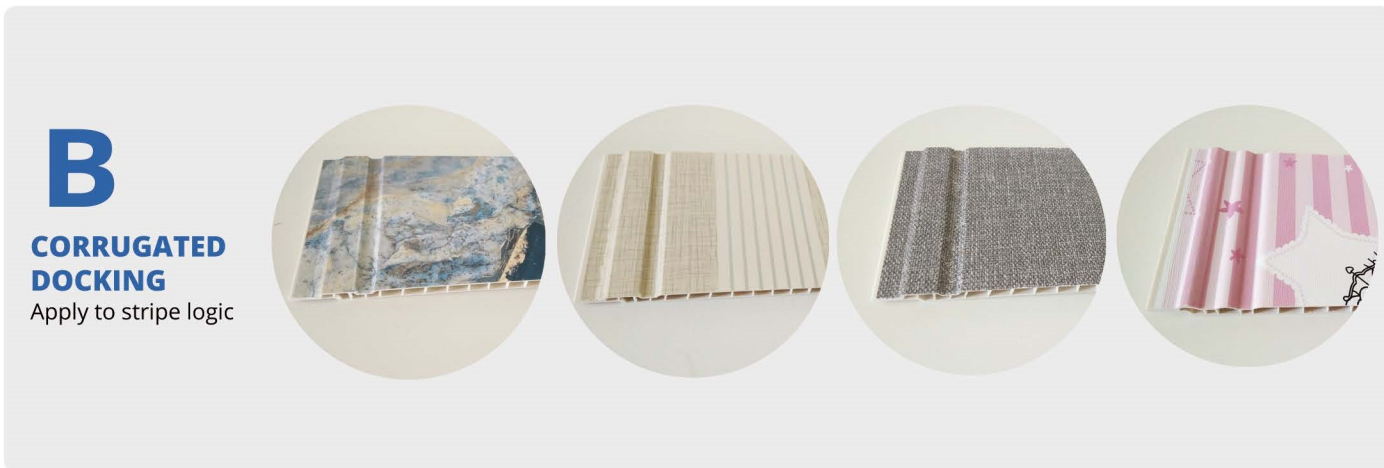
Size:
400*2850*8(mm)

Material:
Nanometer polymer, Mica powder and algae powder such as environmental protection

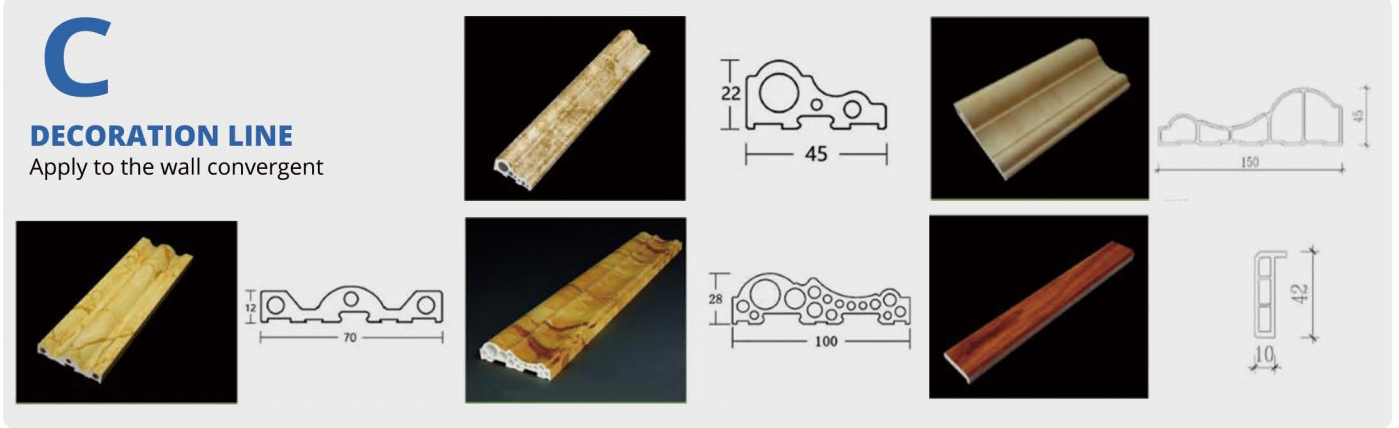
material Process:
Stone plastic coated technology, glossy highlight pattern is clear, it can realize double groove and seamless splicing



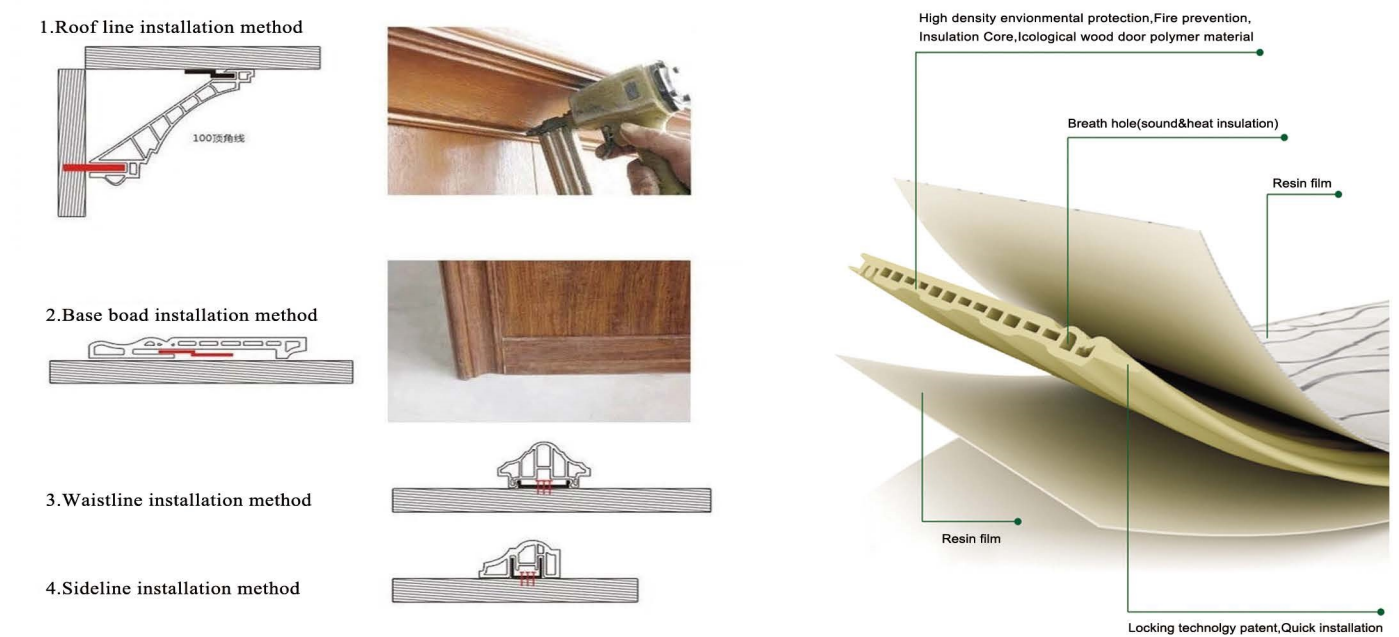
A
FLAT PIN
Apply to integral pattern



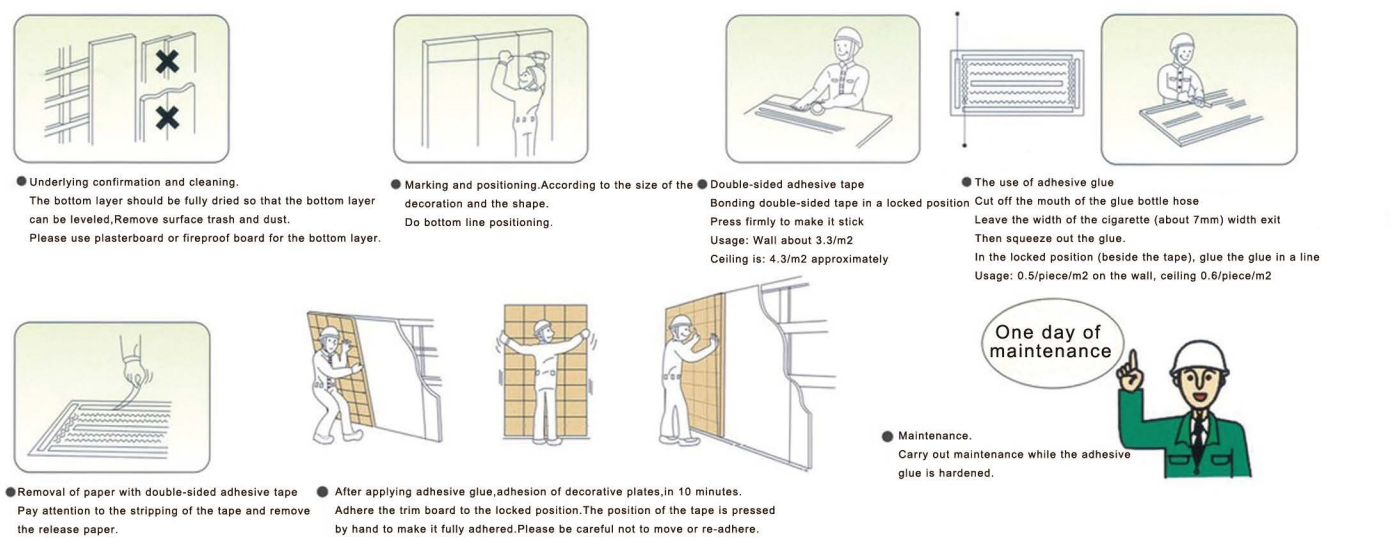
B
CORRUGATED DOCKING
Apply to stripe logic



LINE INSTALLATION



WALLBOARD INSTALLATION



CONTAINER HOUSE SERIES



BATHROOM/KITCHEN SERIES



NAILS/BOLTS SERIES

