



**EVERYTHING  
under THE SUN**



#### **Asian Dragon Philippines**

Asian Dragon International Impex Incorporated  
Suites 105/106/107/108 SIH Complex Alpha Bldg.  
Subic Bay Freeport Zone, 2222. Philippines  
SEC Registration # : CS201629062  
Duty Free and Tax Exemption # : 2017 - 0630  
Email : [President.ceo@asiandragonintl.com.ph](mailto:President.ceo@asiandragonintl.com.ph)  
Telephone : +63 (047) 251 3586

#### **Asian Dragon International Cambodia**

#7B Street 462 Sangkat, Tonle Bassak, Khan Chamkarmon, Phnom Penh  
12301  
0974 687734 (9am to 5pm) Monday to Friday







Company environment



Packaging Logistics





## Color steel sandwich panel

### EPS

Polystyrene(EPS) sandwich panels

Polystyrene sandwich panel(EPS sandwich board)is a new type of construction panel which made of outer layers bothsides of prepainted steel coil and inner layer of polystyrene. Processing by computer-controlled color steel shapingmachine and covered with high-strength adhesive.

Characteristic:light weight, 8-20kg/m<sup>2</sup>,easy to install,short work cycle,lower cost,high-capacity,high-stiffness and intensity. Flexible for using,the length of panel is according to the project requirements and term of installation and transportation. Heat preservation and heat insulation,prevented sound pollution,High-performance characteristic of moisturixing,the average of thernal conductivity is 0.032kcal/m.

Tongue & groove type



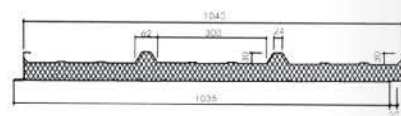
950mm Width-Shapes

DSM-EPS-TG950/40	DSM-EPS-TG950/50
DSM-EPS-TG950/75	DSM-EPS-TG950/100
DSM-EPS-TG950/150	DSM-EPS-TG950/200
DSM-EPS-TG950/250	

1150mm Width-Shapes

DSM-EPS-TG1150/40	DSM-EPS-TG1150/50
DSM-EPS-TG1150/75	DSM-EPS-TG1150/100
DSM-EPS-TG1150/150	DSM-EPS-TG1150/200
DSM-EPS-TG1150/250	

Corrugated type



960mm 1050mm Width-Shapes

DSM-EPS-C1050/40	DSM-EPS-C1050/50
DSM-EPS-C1050/75	DSM-EPS-C1050/100
DSM-EPS-C1050/150	DSM-EPS-C1050/200
DSM-EPS-C1050/250	

### Features

- Light weight:8-20kg/m<sup>2</sup>
- Easy to install
- short work cycle
- High load bearing capacity.
- Heat insulation
- Sound proof
- Moisture proof
- Avg.Thermal cond activity:0.032kcal/m
- Lengths:As per requirement considering
- the transportation constraints

### Applications

Prefabricated house,Industrial sheds,Warehouses,Commercial complexes,indoor/Outdoorstadiums,cold storage,Building & Indoor Partitions Etc.

### EPS

FORM of the spans of polystyrene sandwich panel house (Deformation controlled under L/240)

跨厚比 Span/Thick mm/mm	厚度 Thickness mm	50	75	100	150	200	250
25	5.19	6.91	8.09	9.91	11.45	12.80	
50	3.74	4.96	5.72	7.01	8.09	9.05	
100	2.53	3.49	4.05	4.96	5.72	6.40	
150	1.90	2.70	3.31	4.05	4.67	5.23	
200	1.40	2.10	2.80	3.51	4.05	4.53	
250	1.10	1.70	2.30	3.13	3.62	4.05	
300	0.90	1.40	1.91	2.66	3.31	3.70	





## Color steel sandwich panel

### Glasswool sandwich panels

Glass wool is with unique centrifugal technique, the molten glass fibrosis and thermosetting resins is given priority to environmental protection formula of binder for processed goods, is a kind of surface by only a few microns in diameter glass fibre, elastic fiber glass products. Because of glass wool choi steel has a large number of small space, with thermal insulation, sound absorption, noise reduction and safety protection etc., building fire prevention is the best material to heat preservation and heat insulation, sound-absorbing noise reduction.

#### Tongue & groove type



#### 950mm Width-Shapes

DSM-RW-TG950/40	DSM-RW-TG950/50
DSM-RW-TG950/75	DSM-RW-TG950/100
DSM-RW-TG950/150	DSM-RW-TG950/200
DSM-RW-TG950/250	

#### 1150mm Width-Shapes

DSM-RW-TG1150/40	DSM-RW-TG1150/50
DSM-RW-TG1150/75	DSM-RW-TG1150/100
DSM-RW-TG1150/150	DSM-RW-TG1150/200
DSM-RW-TG1150/250	

#### Corrugated type



#### 960mm 1050mm Width-Shapes

DSM-RW-C1050/40	DSM-RW-C1050/50
DSM-RW-C1050/75	DSM-RW-C1050/100
DSM-RW-C1050/150	DSM-RW-C1050/200
DSM-RW-C1050/250	

L/200)

FORM of the spans of glass wool sandwich panel house (Deformation controlled under L/200)

Roof panel																	
Thickness S(mm) (mm)	P=kg/m²	80	100	120	150	200	250	300		80	100	120	150	200	250	300	
50	L=	3.95	3.53	3.22	2.88	2.50	2.23	2.04	3.53	3.16	2.84	2.58	2.23	2.00	1.82		
75	L=	4.60	4.11	3.72	3.36	2.91	2.60	2.37	4.11	3.68	3.33	3.00	2.60	2.33	2.12		
100	L=	4.98	4.45	4.08	3.63	3.15	2.82	2.57	4.45	3.98	3.61	3.25	3.82	2.52	2.30		

#### Features

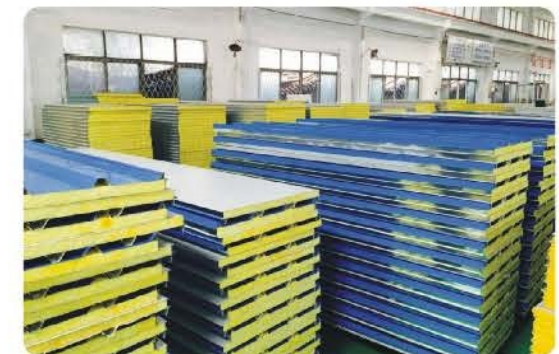
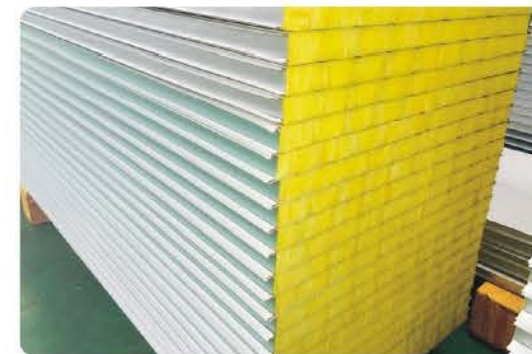
Glass wool sand wich panel has a good feature in noise reduction, specially suitable for the place where is high requirement in the sound-insulation. Via testing according to ISO 717/82 and UNI18270/7 standards, selecting the glass wool which with the density 105kg/m³ and the thickness 50-100mm as the core, the sound coefficient will achieve RW=29-80dB. Excellent fire resistance: the ability of the fire-proofing of the glass wool sandwich panel is over 700°C for the rock wool is the non-fire material. According to the test of the Italy authority organization Istituto Giordano S.P.A, the fireproofing margin of glass wool sandwich panel is as below: (take the wall panel as the example)  
Thickness: 100mm (REL) 120 mins  
75mm (REL) 60 minutes  
50mm (REL) 30 minutes  
The fireproof degree of glass wool panels of 50-75-100mm are 0/2 (with their fire-proof degrees from high to low is 0, 1, 2, 3, 4, 5).

#### Product advantages

- A1 level fire, permanent non-combustible.
- antibacterial mouldproof, corrosion resistance, aging resistance to ensure your health.
- sound-absorbing noise reduction, can effectively prevent
- the spread of voice. Low hygroscopicity, stable physical properties.
- strong vibration resistance, high durability.

#### Applications

It is widely used in: Purifying factory, combined house, building top attachment, indoor partition, automobile painting room, refrigerator and other projects. E.g. Interior decoration of civil buildings for medicine, electronics, foodstuff beverage, vegetable preservation and large refrigerator etc.





## Color steel sandwich panel

### Rock wool sandwich panel

Rock wool Sandwich Panel is applicable to project with fairly high demand upon fire protection. The rock wool fibers plumb to the color steel plates. High density strip rock wool crisscross with the length of the color steel plates. All of this guaranteed the rock wool sandwich panel have a good bearing capability.

#### Tongue & groove type



#### 950mm Width-Shapes

DSM-RW-TG950/40	DSM-RW-TG950/50
DSM-RW-TG950/75	DSM-RW-TG950/100
DSM-RW-TG950/150	DSM-RW-TG950/200
DSM-RW-TG950/250	

#### 1150mm Width-Shapes

DSM-RW-TG1150/40	DSM-RW-TG1150/50
DSM-RW-TG1150/75	DSM-RW-TG1150/100
DSM-RW-TG1150/150	DSM-RW-TG1150/200
DSM-RW-TG1150/250	

#### Corrugated type



#### 960mm 1050mm Width-Shapes

DSM-RW-C1050/40	DSM-RW-C1050/50
DSM-RW-C1050/75	DSM-RW-C1050/100
DSM-RW-C1050/150	DSM-RW-C1050/200
DSM-RW-C1050/250	

L/200

FORM of the spans of rock wool sandwich panel house (Deformation controlled under L/200)

Roof panel																	
Thickness S(mm)	(mm)	= kg/m² P= kg/m²	80	100	120	150	200	250	300	80	100	120	150	200	250	300	
50	L=		3.95	3.53	3.22	2.88	2.50	2.23	2.04	3.53	3.16	2.84	2.58	2.23	2.00	1.82	
75	L=		4.60	4.11	3.72	3.36	2.91	2.60	2.37	4.11	3.68	3.33	3.00	2.60	2.33	2.12	
100	L=		4.98	4.45	4.08	3.63	3.15	2.82	2.57	4.45	3.98	3.61	3.25	2.82	2.52	2.30	

#### Features

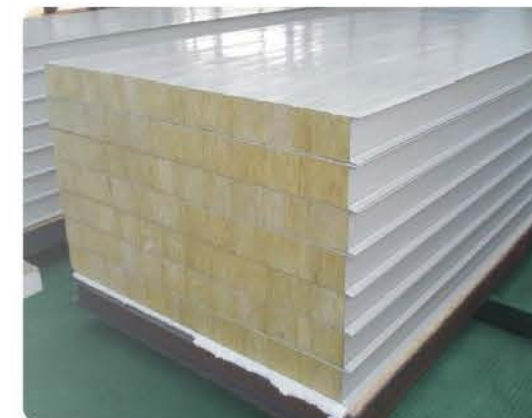
Rock wool sandwich panel has a good feature in noise reduction, specially suitable for the place where is high requirement in the sound-insulation. Via testing according to ISO 717/82 and UN118270/7 standards, selecting the rock wool which with the density 105kg/m<sup>3</sup> and the thickness 50-100mm as the core, the sound coefficient will achieve RW=29-30dB. Excellent fire resistance: the ability of the fire-proofing of the rock wool sandwich panel is over 700°C for the rock wool is the non-fire material. According to the test of the Italy authority organization Istituto Giordano S.P.A, the fireproofing margin of rock wool sandwich panel is as below: (take the wall panel as the example)  
Thickness: 100mm (REL) 120 mins  
75mm (REL) 60 minutes  
50mm (REL) 30 minutes  
The fireproof degree of rock wool panels of 50-75-100mm are 0/1 (with their fire-proof degrees from high to low is 0,1,2,3,4,5).

#### Features

- Fire prevention: 79 minutes, affected by the weather
- Sound insulation: in line with ISO 717/82 & UN118270/7 standard, especially for environment with high sound insulation.

#### Applications

It is widely used in: Purifying factory, combined house, building top attachment, indoor partition, automobile painting room, refrigerator and other projects. E.g. Interior decoration of civil buildings for medicine, electronics, foodstuff beverage, vegetable preservation and large refrigerator etc.





## Color steel sandwich panel

### Magnesium oxide sandwich panel

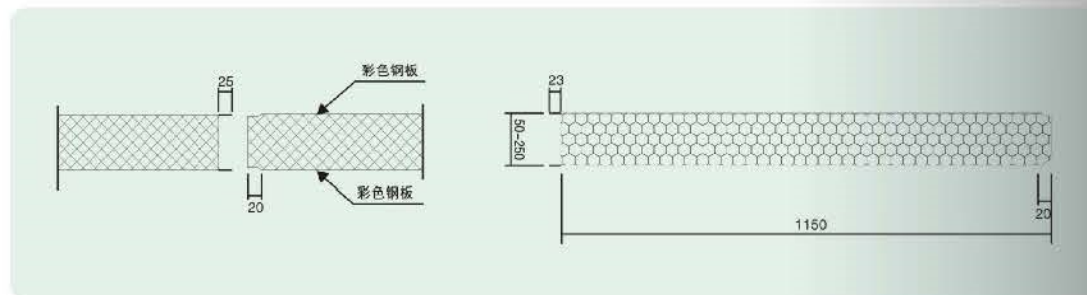
Tongue & groove type



**1150mm Width-Shapes**

DSM-MG-TG1150/50

Length: As per requirement considering the transportation constraints.



### Features

Effective width: 1150mm

Thickness: 50mm---150mm (according to the requirement of customers)

Length: It is made upon the need of users and project requirement.

Core material: Glass magnesium hollow core, glass magnesium rock wool, glass magnesium foam,

glass magnesium aluminum honeycomb, glass magnesium paper honeycomb.

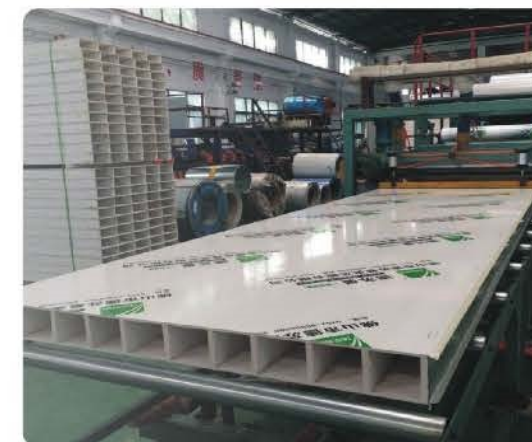
Erection structure and application: Rabbit joint.

### Features

- Fire Proof: 67 minutes
- Weather proof
- High density
- High temperature withstanding capacity more than 1000°C

### Applications

It is widely used in: Indoor and outdoor boards for purifying factory building, combined house and indoor partition with high level requirement in fire proofing and thermal insulation. E.g. Interior decoration of civil buildings for medicine, electronics, biology research, foodstuff, beverage etc.





## Color steel sandwich panel

### Polyurethane sandwich panel

Polyurethane rigid foam is the main raw material of isocyanate and polyether as the main raw material, under the influence of foaming agent, catalyst, flame retardant, etc., through the special equipment mixed with high pressure spray on the field of polymer polymer. Thermal insulation, heat insulation, energy saving (the low thermal conductivity, only  $0.022 \sim 0.033W/(m^{\circ}K)$ , fireproof grade: B1



### Polyurethane sandwich panel classification and use

#### 1. Polyurethane high quality sandwich panel:

Thickness: 50mm 75mm 100mm 125mm 150mm

Width: 1150mm 950mm

Length: It can be produced according to the customer's needs

Uses: Widely used in purifying clean workshops, building houses, refrigerated fresh-keeping warehouses, indoor partitions, automotive paint booths, etc. Such as: The internal decoration of electronics, medical, food, vegetable preservation, large-scale cold storage, and civil buildings are used.

#### 2. polyurethane roof sandwich panel:

Thickness: 50mm 75mm 100mm 125mm 150mm

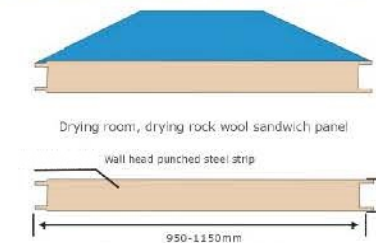
Width: 960mm 1050mm

Length: It can be produced according to the customer's needs

Uses: Widely used in large-span factory buildings and steel structure projects. Such as: sports centers, theaters, industrial plants, and business conference center roofs and so on.



### Rock wool kiln board



Drying and baking duct rock wool sandwich panel CAD drawing

Rock wool kiln board fully exerts the unique properties of rock wool core materials, and has significant effects in fire protection, thermal insulation, and drying tunnels.

Excellent fire performance: Raw materials, production processes and formulas used in rock wool kiln board make it have good fire performance. Experiments show that it has a fire resistance of more than 1000° C. Rock wool kiln board has passed GIORANOS, P. A test; according to the standards of the International Organization for Standardization (ISO), British BS and German DIN, rock wool kiln board requirements for D.M.30/11/83 for drying board fire protection standard M.I.14/09/61 letter 91.

Thermal insulation is good. In addition, after the rock wool roofing panels were used, rain and hail impacted the roofing steel plate of the building and the indoor echoes were also significantly reduced.

Compression strength:  $\geq 50Kpa$

Material: color steel

Application range: drying tunnel

Morphology: fibrous

Product Category: Fire Board

Core material: rock wool

Grade: Class A thermal conductivity

Place of Origin: Foshan, Guangdong

Low temperature bending  $\leq 1220$

Specifications: 950, 1150mm  
enterprise mouth type

Bending strength:  $\geq 11Kpa$

Working temperature: 700°C

Normal temperature: 0.035

shape: rectangle

Elongation at break: 100

Product Type: Insulation Board

Brand: De Suman



## Color steel sandwich panel

### Phenolic aldehyde sandwich panel

Phenolic board is made of phenolic foam material, phenolic foam material is a high polymer organic rigid aluminum foil foam products, which is made of thermosetting phenolic resin.

Phenolic foam insulation materials known as "King" reputation, is a new generation of fire insulation materials. It has the advantages of light weight, fire, not burning, smokeless, non-toxic, no dripping properties, wide temperature range. Phenolic foam as a safe, green, new energy-saving building materials, its advantages have been recognized by the construction department and public security fire department. Fire rating: A1 grade.



### Phenolic aldehyde sandwich panel classification and usage

#### 1. Phenolic aldehyde sandwich panel:

Thickness: 50mm 75mm 100mm 125mm 150mm

Width: 1150mm 950mm

Length: It can be produced according to the customer's needs

Uses: Widely used in purifying clean workshops, building houses, refrigerated fresh-keeping warehouses, indoor partitions, automotive paint booths, etc. Such as: electronic, medical, food, vegetable preservation, large-scale cold storage and civil construction and other interior decoration use.

#### 2. Phenolic aldehyde roofing sandwich panel:

Thickness: 50mm

Width: 960mm

Length: It can be produced according to the customer's needs

Uses: Widely used in industrial plants, warehouses, public facilities, exhibition centers, shopping malls, cinemas, all kinds of indoor playgrounds, and other places of thermal insulation and fire prevention.

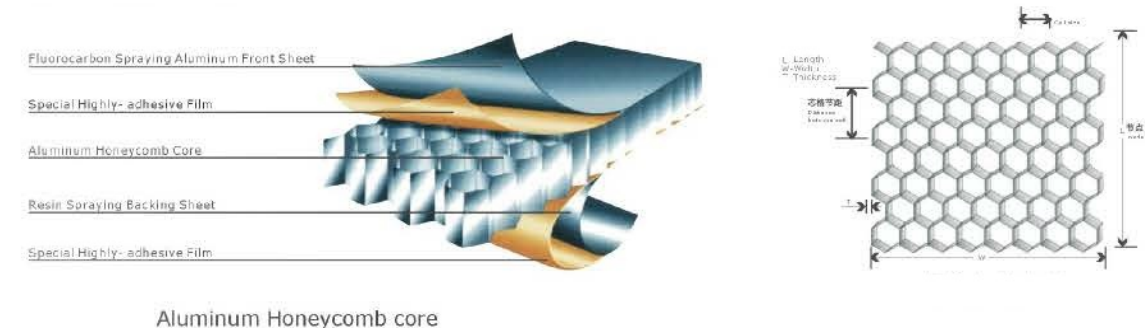


### Honeycomb sandwich panels

10mm, 12mm, 15mm, 20mm, 25mm

Aluminum honeycomb is a new breakthrough in the transformation of space technology into civilian use. Currently, the world's best lightweight composite environmental protection material. Because of its irreplaceable advantages are widely used in various fields. Especially in the architectural field, it is known as the best building curtain wall technology product in the 21st century.

The surface of the aluminum honeycomb panel is made of fluorocarbon roller-coated aluminum alloy sheet; in the middle is an aluminum honeycomb that complies with American Aeronautical Standards, and CEG has introduced a special composite cold-pressing and hot-pressing technology for sandwich sandwich panels from France. The products make the products have more outstanding characteristics, are widely used in building curtain walls and indoor and outdoor decoration, but also because CEG company has a professional and comprehensive production process protection, so it can be completely different according to customer requirements and actual conditions. The composite process produces products. Conventional thickness: 10mm, 12mm, 15mm, 20mm, 25mm



### Aluminum Honeycomb core

The aluminum honeycomb core is formed by bonding multiple layers of aluminum foil and then unfolded into a regular honeycomb. The company's aluminum honeycomb core has a sharp, clear hole wall, no burrs, suitable for high-quality honeycomb core to face material and other uses.



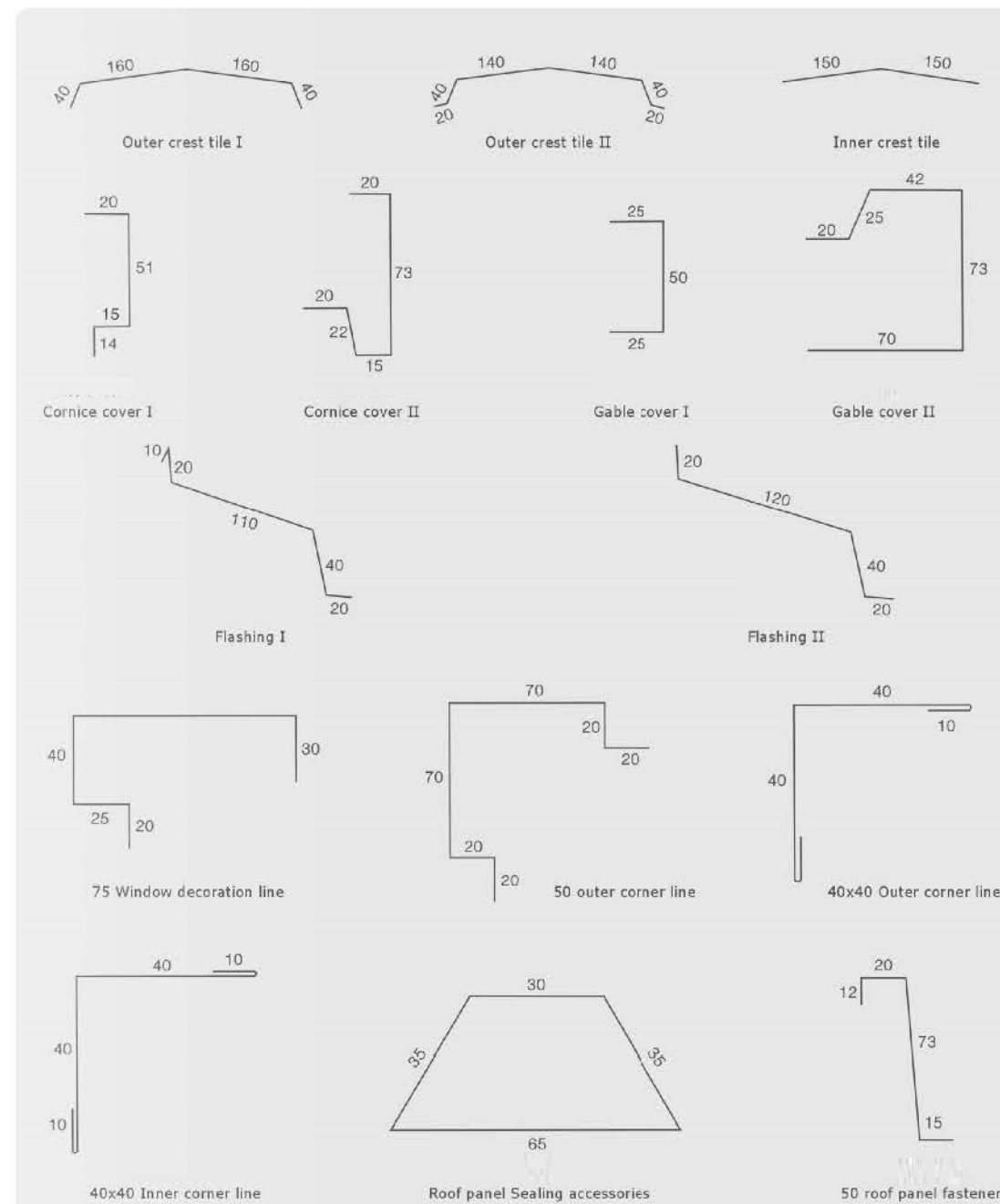


## Color steel sandwich panel

### Clean room aluminum materials



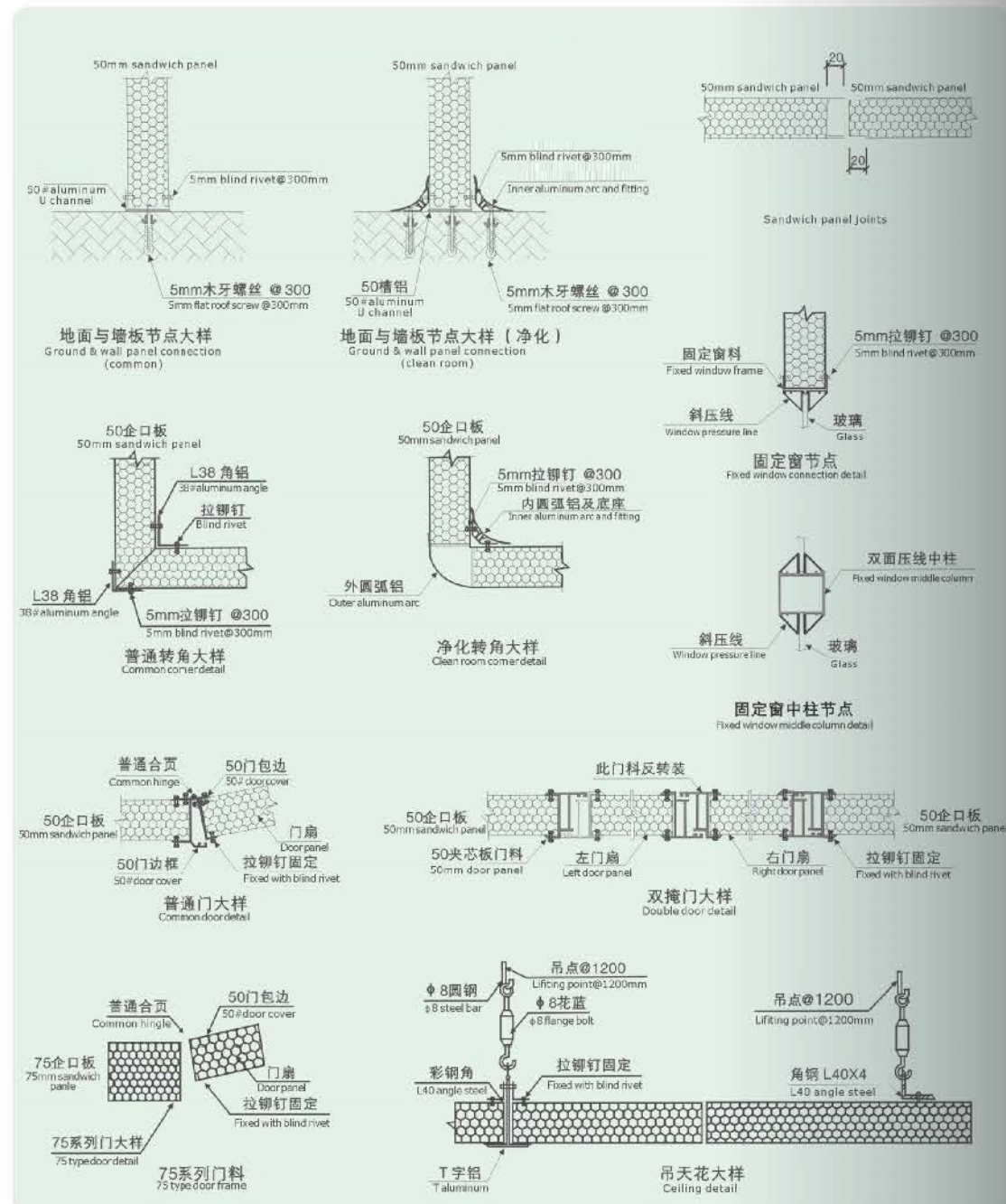
### Sandwich accessories diagram



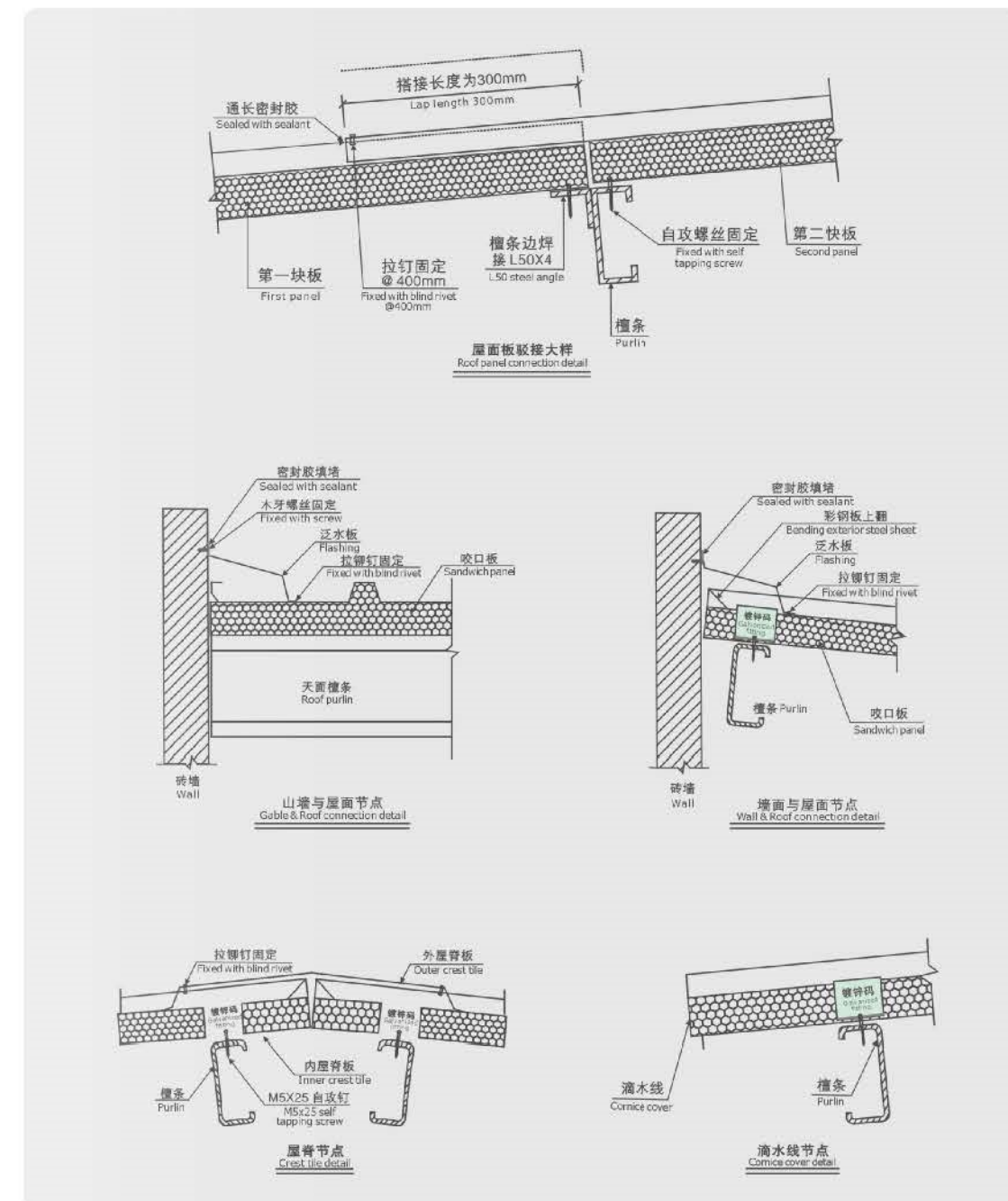


# Color steel sandwich panel

Sandwich accessories diagram



Roof panel installation diagram





## Container house

### Container house introduction

Container house is a construction product which is mobile, prefabricated and reusable. The house adopts standardized design, factory production, and takes cabinet as the elemental unit. Container house is not only fit for individual usage, but also for spacious room application formed by various horizontal and vertical direction combination. Container house structure uses standardized structural elements that are welded by profile steel or cold-formed thin-wall steel. Combined container houses is connected and fastened by high strength screws, so that house structure is simple, easy to install. Container house is widely used for real estate development company exhibition hall, product showroom, temporary reception center, commercial temporary office, store and so on.

#### Foldable container house



#### Flat pack container house



#### Booth, mobile toilet



### Foldable container house



#### Product specifications

Product specifications-1	After folding specifications: 6000x3000x390mm	Expanded post specifications: L6000xW3000xH2650mm
2 Product specifications-2	After folding specifications: 5900x2500x390mm	Expanded post specifications: L5900xW2500xH2650mm

#### Steel Structure

No	Component Name	Materials	Thickness
1	Pillar	Abnormity galvanized rectangular tube	1.5mm
2	Folding beams	Abnormity galvanized rectangular tube	1.5mm
3	bottom border	Abnormity galvanized rectangular tube	2.5mm
4	beam	50×100mm galvanized rectangular tube	1.5mm
5	lift fittings	Cast steel joint angle 130×170×15	15mm
6	hinge	Galvanized hinge	5mm



## Container house

Foldable container house



Flat pack container house



Product specifications

Product specifications-1	After folding specifications: L5900 × W2500 × H390mm	Expanded post specifications: L5900xW2500xH2800mm
Product specifications-2	After folding specifications: L6000xW3000xH390mm	Expanded post specifications: L6000xW3000xH2800mm

Steel Structure

No	Component Name	Materials	Thickness
1	Pillar	Cold formed galvanized steel	2.5
2	Side beam	Cold formed galvanized steel	2.5
3	Folding beams	Cold formed galvanized steel	2.5
4	Floor purlin	4 × 8 Galvanized square pipe 40x80mm	2
5	corner fitting	4 × 8 Galvanized square pipe 40x80mm	2
6	Pressing plate	160 × 160 × 8 Steel Angle of link	4.7
		Pressing plate	1



## Container house

Flat pack container house



Booth



Mobile toilet





## Light Steel Villa

### The basic elements of systems in the house

The steel framed housing system has several obvious advantages being light weight, wide span, resistant to strong winds and earthquakes, providing greater thermal comfort and provide excellent noise reduction performance. It is a highly efficient, energy saving, environmentally friendly, sustaining green building system and can be fire rated. It can be used in various residential styles, such as villas, multi-storey buildings, entertainment centers and clubs. It also can be used in adding an extra floor on existing buildings, re-roofing or adding light partitions and external claddings. Can be exported and wall frames pre-assembled and external claddings, insulation and windows already attached. Trusses can also be supplied Pre-assembled, making installation times significantly quicker than conventional construction methods.

Moreover, Foshan Desuman provides many standard classical villa styles. Developers can not only choose from the standard designs, but can also have them customized, if required. Using advanced design software, we will provide the optimized solutions to meet customers's needs with lower cost and high efficiency.



### Product superiorities

Comparing with ordinary civil engineering houses, light steel structure houses have such superiorities as follows:

More flexible	Light steel structure houses provide large space for sharing and enhance function distribution that it can be flexibly separated according to specific needs to diversify indoor arrangements. Light steel structure system is suitable for any geological condition that the houses can be built on hilly places, in forests and on frozen earth etc.
More economical	Light steel structure has light weight. It is only as much as 1/4 weight of concrete structure, which can greatly reduce the cost in initial phase. And the light steel structure houses have the features of integration of design, production and mechanical construction that can greatly save time and space. The light and thin walls and beams improve the utilization rates of houses. It is investigated that for a two-floor house with an area of 200 square meters, the usable floor area of light steel structure houses is 8%-15% more than concrete structure ones.
Quicker	The construction time limit of light steel structure houses is short, about 1/3 of traditional ones. All the components are produced in factory and installed on site. The installation way belongs to dry construction that is free from the affects of weather and seasons. The average time is only three months.
Safer	The excellent physical and mechanical properties of light steel material endow villas with large integrated rigidity, high component strength and light weight. It has good performance in natural disasters such as earth quakes, hurricanes. It is known that the light steel structure has at least twice shock resistance as much as those of ordinary structure and it can resist 70m/s hurricane. The structure is safer and more reliable.
More durable	Light steel structure houses are made of anti-corrosion zincing steel sheet with reasonable fire proof measurement to ensure the durability of the houses and be free from worries of serious structure damage in fires. All the components are produced in factory under standards with stable quality. The structure of the main body can last for more than 70 years.
More reassuring	The light steel structure is free from creeping, dampness and termite and rats that the living condition are more reassuring and pleasing.
More comfortable	The high efficiency energy saving walls of light steel structure houses have breathing functions that can adjust indoor humidity and have good soundproof ability. It is shown from the results of the experiments that when the sound outdoor is 80 db (noise), the sound indoor is only 40db (quiet for office work). It is more comfortable for living.
More energy-saving	The heat insulation, dampness prevention of the wall and roof structure of light steel structure houses are fully considered in the design that the houses are warm in winter and cool in summer and can save more energy. It is shown from data that the light steel villas can improve 50% energy saving effects and save 30%-50% of heating fees.
More environmentally protection	The light steel structure houses belong to ecology type construction that uses green and environment-friendly light steel as building materials. The civilized operation at construction site will cause little pollution to buildings. The steel structure components can be 100% recycled and other auxiliary materials can be mostly recycled.



# Light Steel Villa

## Roof System

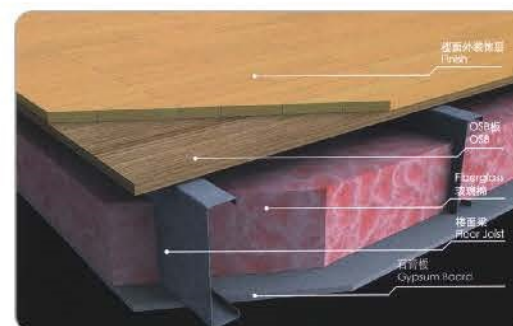


Roofing Type 1

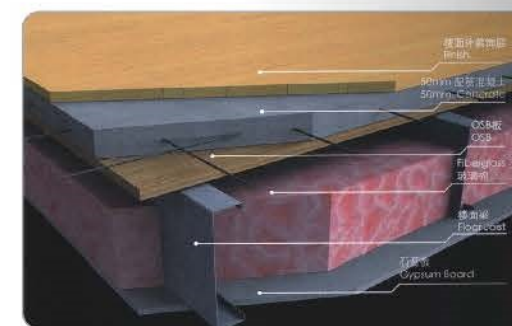


Roofing Type 2

## Floor System



Floor Type 1

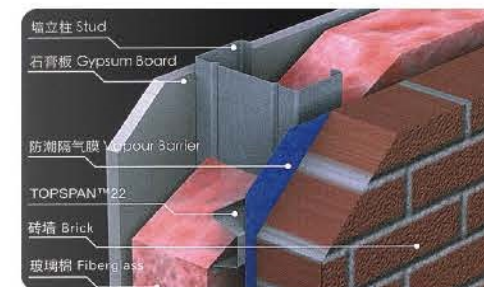


Floor Type 2

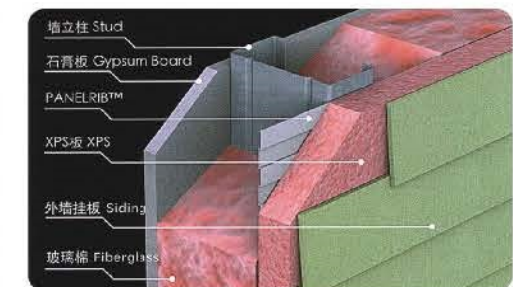


Floor Type 3

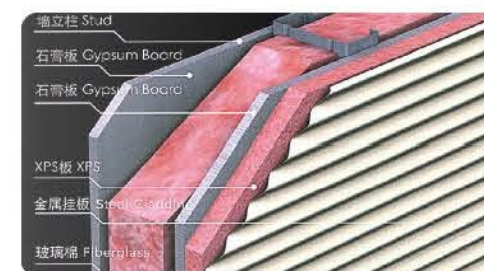
## Wall System



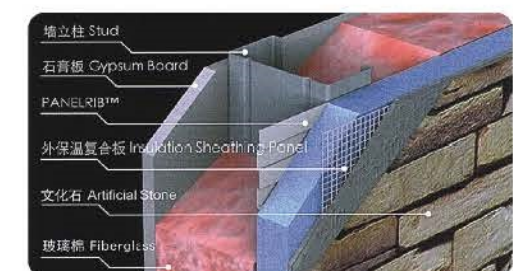
外墙类型1 Exterior Wall Type 1



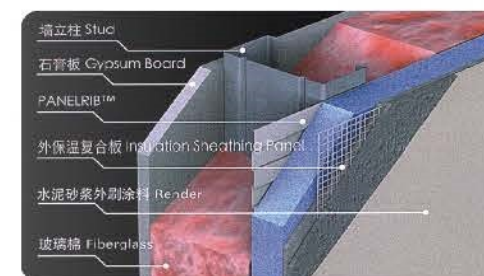
外墙类型2 Exterior Wall Type 2



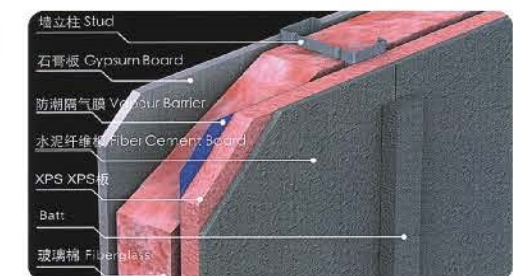
外墙类型3 Exterior Wall Type 3



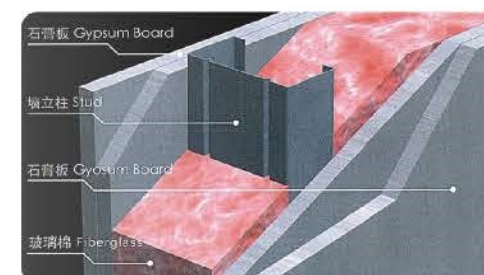
外墙类型4 Exterior Wall Type 4



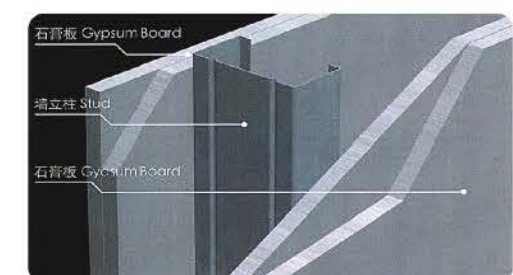
外墙类型5 Exterior Wall Type 5



外墙类型6 Exterior Wall Type 6



Exterior Wall Type 7



Exterior Wall Type 8

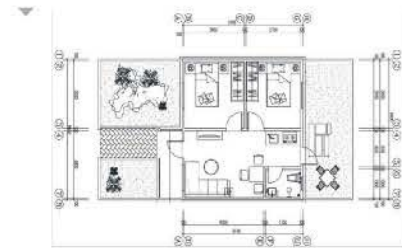


## Light Steel Villa

### Case presentation

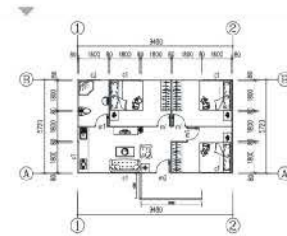
#### Sri Lanka Project

40m<sup>2</sup>



#### Malaysia Project

57m<sup>2</sup>



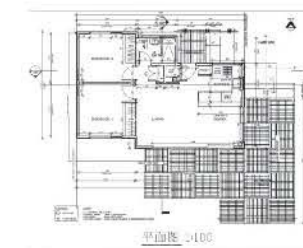
#### Indonesia Project

77m<sup>2</sup>



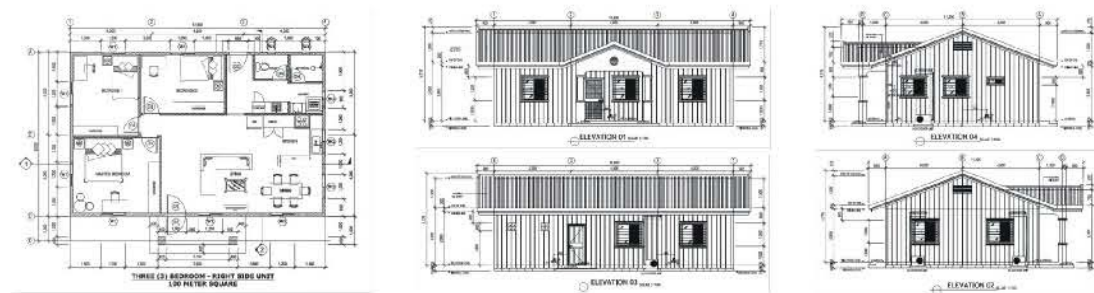
#### Australia Project

88.04m<sup>2</sup>



#### PNG Project

100m<sup>2</sup>

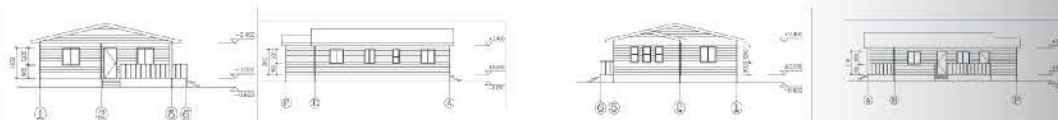
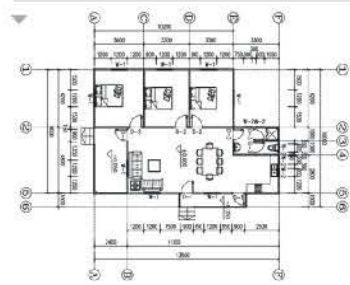




## Light Steel Villa

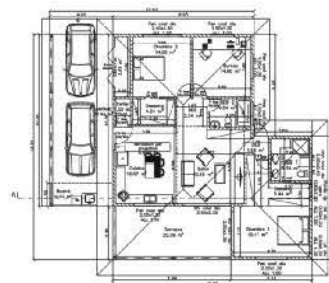
Sudan Project

101.76m<sup>2</sup>



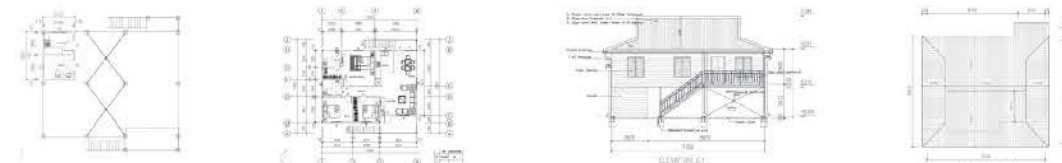
Tahiti Project

148m<sup>2</sup>



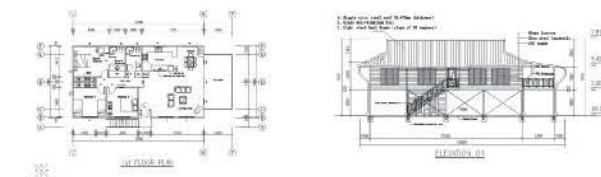
PNG Project

130.50m<sup>2</sup>



PNG Project

199.87m<sup>2</sup>





## Steel structure

### Introduction of steel structure house

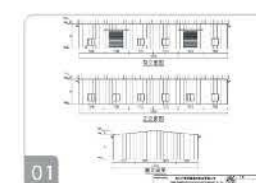
Steel structure house uses steel plate as primary material, the main load-carrying components include steel column, steel girder, steel structure foundation and steel roof frame etc. Compared with reinforced concrete and brick construction, steel structure house has outstanding advantages of being light weight, good earthquake resistance performance, easy installation and short construction time. The house can be various design, various specification and space structure, open type and wide span layout. Therefore, the steel structure house can be partitioned reasonably, so that the comprehensive construction cost will be low for steel structure house.

Steel structure house is usually used in high-rise, large span and complex structure building which is in heavy loads, crane lifting capacity is large. The structure is suitable for high temperature workshop, satisfy good sealing performance housing, movable or frequent assembled structure. The steel structure is widely uses in multi-stories building, stadium, opera house, modern bridge, television tower, warehouse, workshop, residential housing, temporary construction and so on.

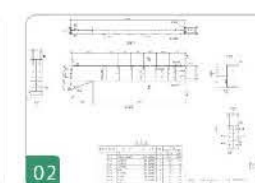
### Steel structure warehouse



### Production Flowchart



Design Drawing



Shop Drawing



Prepare material



Multi-head digital cutting machine



Assembly



Automatic submerged arc welding



Riveter manufacture



Welding



Semi-manufacture



Shot blasting and descaling



Spray paint processing



Transportation



Steel structure installation



Roof and wall installation



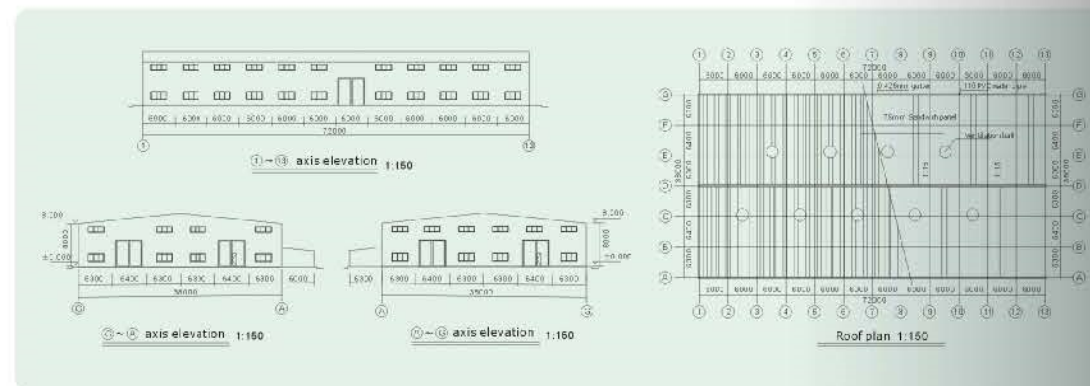
Finish Installation



## Steel structure

Project name: Libya warehouse

Specification: 38m\*72m\*8m



Case presentation



Tanzania workshop



Algeria two floor office



Russian warehouse



Algerian warehouse



Africa warehouse



Sudan mall



Domestic workshop



Caledonia warehouse



## Steel structure

### Maintenance material

#### C section steel



#### Floor decking



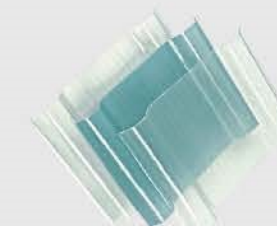
#### Other maintenance materials



Color Arch Sheet



Glass Fiber



FRP board

### Accessories



Galvanized Bolt



Expansion Bolt



Torsional Shear Type High-strength Bolts



Self-tapping Screw



Hexagon High-strength Bolt



Turnbuckle



Studs



Embedded Parts



Gutter



Non-power ventilation



Plywood



Pvc Waterfall Pipe

## Modular house

### Sloping roof prefab house

assembled slope roof prefab house is a brand-new kind of general economic prefab house of environmental protection of our company, divide into ordinary type and high grade type. May carry out space combination according to the demand of customer with standard modulus, form its skeleton system with country steel structure, and with clip-core wallboard and PU tile, forming to surround protect and roofing system. Have realized is succinct and beautiful, construction convenience, use safety and standard building conception for general using, make temporary building enter a industrialization production, may be in stock, and have enough to meet the need of temporary finalize the design house repeatedly use.



Sloping roof prefab house (1 layer)



Sloping roof prefab house (2 layers)



Sloping roof prefab house (3 layers)



### Area comparison table of slope roof prefab house

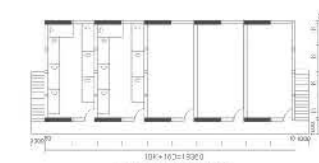
		(3P)					(6P)					(9P)		
		2K	3K	4K	5K	6K	2K	3K	4K	5K	6K	3K	4K	5K
4	K	31.99	45.53	59.07	72.61	86.16	76.70	103.79	130.87	157.95	185.03	176.84	217.46	258.08
5	K	39.82	56.67	73.52	90.38	107.23	93.27	126.97	160.68	194.39	228.09	212.07	262.63	313.19
6	K	47.64	67.81	87.98	108.14	128.31	109.83	150.16	190.49	230.82	271.15	247.31	307.81	368.30
7	K	55.47	78.95	102.43	125.90	149.38	126.39	173.35	220.30	267.26	314.21	282.54	352.98	423.41
8	K	63.30	90.09	116.88	143.67	170.46	142.95	196.53	250.11	303.69	357.28	317.78	398.15	478.52
9	K	71.12	101.22	131.33	161.43	191.53	159.51	219.72	279.93	340.13	400.34	353.01	443.32	533.63
10	K	78.95	112.36	145.78	179.19	212.61	176.08	242.91	309.74	376.57	443.40	388.25	488.50	588.74
11	K	86.77	123.50	160.23	196.96	233.68	192.64	266.09	339.55	413.00	486.46	423.48	533.67	643.85
12	K	94.60	134.64	174.68	214.72	254.76	209.20	289.28	369.36	449.44	529.52	458.72	578.84	698.96
13	K	102.43	145.78	189.13	232.48	275.84	225.76	312.47	399.17	485.88	572.58	493.96	624.01	754.07
14	K	110.25	156.92	203.58	250.25	296.91	242.32	335.65	428.98	522.31	615.64	529.19	669.18	809.18
15	K	118.08	168.06	218.03	268.01	317.99	258.89	358.84	458.79	558.75	658.70	564.43	714.36	864.29
16	K	125.90	179.19	232.48	285.77	339.06	275.45	382.03	488.61	595.19	701.76	599.66	759.53	919.40
17	K	133.73	190.33	246.93	303.54	360.14	292.01	405.21	518.42	631.62	744.83	634.90	804.70	974.51
18	K	141.56	201.47	261.38	321.30	381.21	308.57	428.40	548.23	668.06	787.89	670.13	849.87	1029.62
19	K	149.38	212.61	275.84	339.06	402.29	325.13	451.59	578.04	704.49	830.95	705.37	895.05	1084.73
20	K	157.21	223.75	290.29	356.83	423.36	341.70	474.77	607.85	740.93	874.01	740.60	940.22	1139.84
21	K	165.03	234.89	304.74	374.59	444.44	358.26	497.96	637.66	777.37	917.07	775.84	985.39	1194.95
22	K	172.86	246.02	319.19	392.35	465.52	374.82	521.15	667.48	813.80	960.13	811.07	1030.56	1250.06
23	K	180.69	257.16	333.64	410.12	486.59	391.38	544.33	697.29	850.24	1003.19	846.31	1075.74	1305.17
24	K	188.51	268.30	348.09	427.88	507.67	407.94	567.52	727.10	886.68	1046.25	881.54	1120.91	1360.28
25	K	196.34	279.44	362.54	445.64	528.74	424.51	590.71	756.91	923.11	1089.32	916.78	1166.08	1415.38
26	K	204.16	290.58	376.99	463.40	549.82	441.07	613.90	785.72	959.55	1132.38	952.01	1211.25	1470.49
27	K	211.99	301.72	391.44	481.17	570.89	457.63	637.08	815.53	995.99	1175.44	987.25	1256.43	1525.60
28	K	219.82	312.85	405.89	498.93	591.97	474.19	660.27	845.35	1032.42	1218.50	1022.48	1301.60	1580.71
29	K	227.64	323.99	420.34	516.69	613.05	490.75	683.46	875.16	1068.86	1261.56	1057.72	1346.77	1635.82
30	K	235.47	335.13	434.79	534.46	634.12	507.32	706.54	905.97	1105.30	1304.62	1092.95	1391.94	1690.93

### The area computation rules for slope top mobile houses:

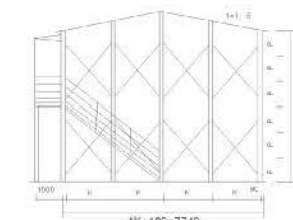
- ① Main body area=Length of outer side of exterior wall × Width × Number of layer;
- ② The area of outdoor staircase and passage= the horizontal projection area of the natural layer;
- ③ The area of rain cover= half the horizontal projection area of the rain cover;
- ④ Total area= (1) + (2) + (3);
- ⑤ There two staircases for a standard layer on the left and right gables. Each staircase is 4.5m<sup>2</sup>, according to which the changes of the stairs are made.
- ⑥ Without special notice, the computing method of engineering work load shall be subject to the rules above.



K×K Foundation drawing



layout chart



side plane chart(1:100)



# LIGHT STEEL VILLA

Light steel villa is flexible design and size can be customized. It's stable and rigid, green and environmental protection, waterproof and fireproof, sound & heat insulation, earthquake resistance, long lasting life and high performance.



Residential System Components



# PREFABRICATED HOUSE

**Application:**  
Apply to the temporary construction houses of such field work as the road, railway, building, etc. Urban municipal administration, commerce and other provisional houses, for instance: temporary office, meeting room, command post, dormitory, temporary shop, temporary school, temporary hospital, temporary parking area, temporary exhibition hall, temporary maintenance, temporary service station, etc.

## Slope roof prefabricated House(K House)

SLOPING ROOF PREFAB HOUSE(1 layer)



SLOPING ROOF PREFAB HOUSE(2 layers)



SLOPING ROOF PREFAB HOUSE(3 layers)



## Flat roof prefabricated house (T-House)



# STEEL STRUCTURE

**Application:**  
Steel structure is widely used in high-rise, large span and complex structure building which loading is heavy, crane lifting is big, vibration is strong, etc... The steel structure is suitable for high temperature workshop, warehouse, satisfy good sealing performance housing, movable or frequent assembled structure, multi-stories building, stadium, opera house, modern bridge, television tower, warehouse, workshop, residential housing, temporary construction and so on...



# CONTAINER HOUSE

**Application:**  
Container house is widely used for: municipal engineering projects, mining projects, labor camp, refugee camp, holiday resort, office, etc...  
**Specification:** Standard size 2435\*6055\*2790, for special size can be customized.

## Installation step



## Project case



# SANDWICH PANELS

**Specification:**  
Width: 950mm / 1150mm for wall panel  
960mm / 1050mm for roof panel  
Thickness: 50mm, 75mm, 100mm, 150mm, 200mm, special thickness can be customized.  
Length: customized, it's better no longer than 12m for transport limit.

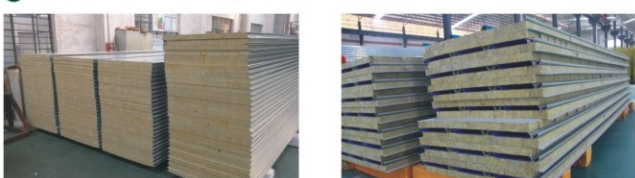
## EPS sandwich panel



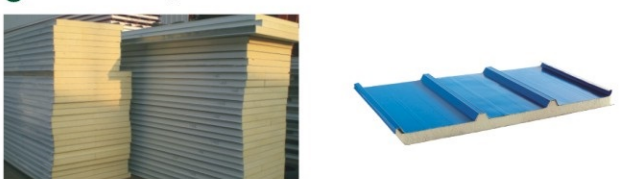
## fiber glass sandwich panel



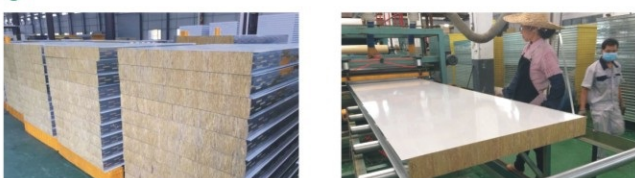
## rock wool sandwich panel



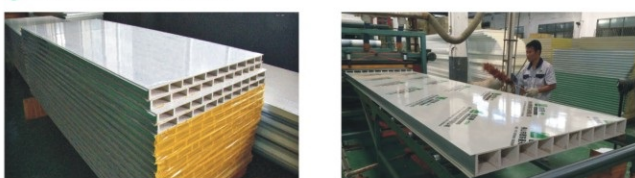
## PU sandwich panel



## rock wool oven panel



## MgO sandwich panel



## Honeycomb sandwich panel

