

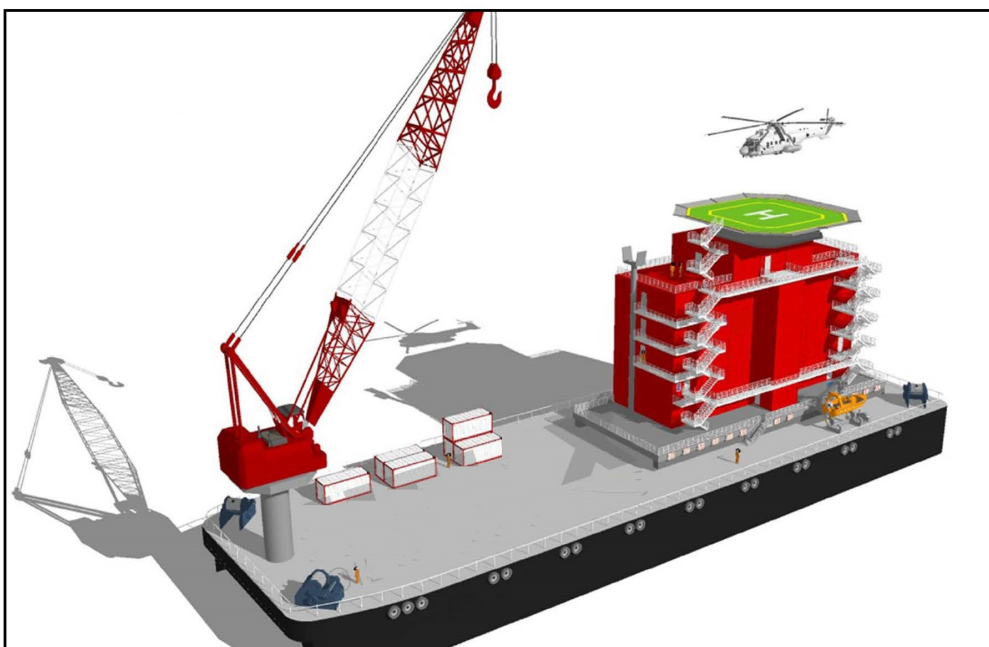
LIVING QUARTERS

DNV Certified 120 POB Accommodation Modules with Helideck

The Living Quarters is a 5-level accommodation block with an additional art level on the roof containing the operational plant. External deck areas on Level 1 are provided for Galley Laydown on the east side of the Lifeboat Embarkation on the north side. Levels 1 and 2 of the Living Quarters are work orientated areas, and include locker and toilet facilities, messing, offices and recreation. This arrangement segregates the noisy operations from the quiet levels above. Levels 3 and 4 are Cabin areas and Level 5 is Cabins, Transit and Medical Facilities.

The Living Quarters as a whole is classified as the Temporary Refuge, with two dedicated Muster Areas in the Level 1 Male Change and Dining Room. Controlled evacuation from the Muster Areas is then to the Lifeboat Embarkation Areas external.

Unused. Constructed by Consafe completed in 2012. Designed and Built for North Sea. Currently in Quayside UK. Available Immediately.



Conceptual Idea of Accommodation Module on Barge with Crane

- 120 POB (60 off two man cabins 2 off single man cabin; can be converted)
- Galley Mess facilities with seating for 48 people
- Laundry Facilities
- Office Suite
- Emergency Command and Control Areas
- Recreational Areas
- Plant Area
- Helideck



*New Aluminium Helideck
Complying with CAP437
(6th Edition). New HVAC
System and Potable Water
System.*

Accommodation Module

Temporary Refuge

- Living Quarters boundary is the Temporary Refuge
- Endurance Period of 1 hour

Blast and Fire Rating

- Blast Rated on All Faces
- Combination of H60 and A60 external
- Internal Fire Rating as per SOLAS

Hazardous Area Certification

(Living Quarters is in a Safe Area)

- External Equipment Certified for a Zone 2 Hazardous Area
- Internal Equipment Certified for Safe Area with exception of:
 - Equipment in Air Locks
 - Fire Dampers
 - Gas Detectors
 - Internal Escape Lighting

Escape Routes

- Minimum Dimensions/Maximum Lengths Specified
- Provision for Stretchers Access—from Incident to Medical Suite/Muster Area and then subsequently to Helideck
- Mustering in the Living Quarters
- Escape from an internal Living Quarters Incident
- Evacuation of Platform (Helicopter or TEMPSC)



Smoke and Gas Ingress

- Constructed to meet Air Leakage Criteria for a Zone
- Smoke and Gas Tight Fire Dampers on Temporary Refuge perimeter
- Fire Dampers Positioned to facilitate Regular Testing

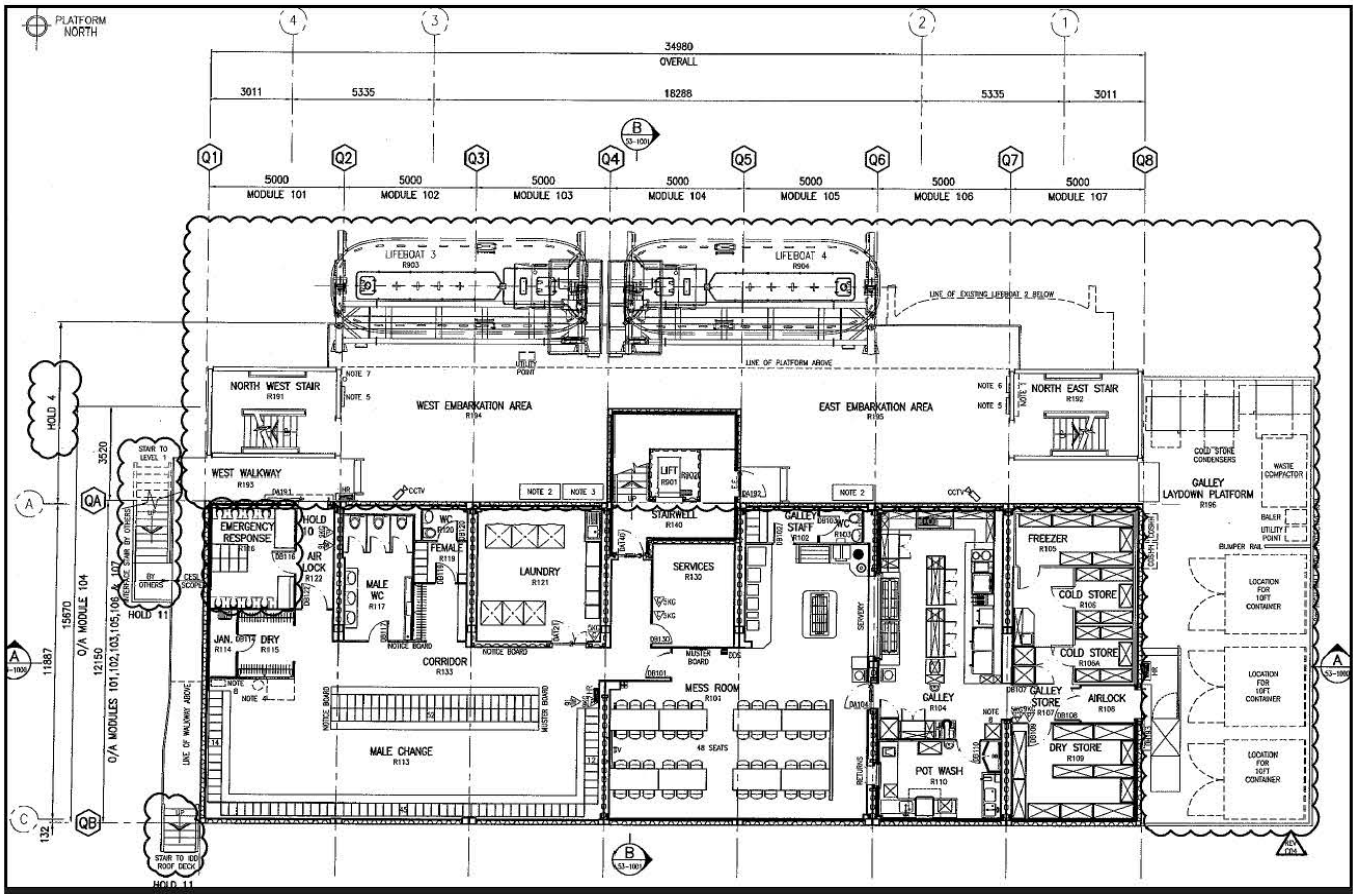
Fire and Gas Detection

- Fire and Gas Detection located at Air Intakes, Roof Areas, Airlocks, UPS/TER rooms
- Addressable Smoke Detection in Living Quarters

LEVEL 1

Architectural General Arrangement

- Male Locker Room/Duty Mess Non-Smoking
- Emergency Response Room
- Male Wash Room with 3 x WCs, 2 x WHBs, 3 x Urinals
- Female Change Room with 1 x WC and 1 x WHB
- Laundry Room
- Linen Store
- Dining Room to seat 48 persons
- Galley
- Pot Wash Room
- Galley Storage Areas
- Galley Change and WC
- Stair/Lift/Services
- Camp Boss/Bond Store



Level 1 General Arrangement (Drawing Reference: AUK-138-AR-LY-00001-001)



Washing Machines and Dryer Machines

Laundry Equipment

All laundry equipment is of robust construction, functional in design and fire corrosion resistant in accordance with SOLAS requirements.

The Laundry is provided with 3 washing machines and 3 dryer machines. The washing machines are fully automatic with override control and equipped with standard selection programmer, ranging from Cold to Boil. The dryers are electrically heated with manual control, thermostat, timer and signal lights.

The drum and all water handling parts of the machines are stainless steel. The door is fitted with a door contact switch that cuts off heating and motor as soon as the door is opened. The door is also fitted with an interlock to prevent opening during a wash cycle.

The dryers have ducted exhausts. These exhausts, together with any exhausts required for the washer/dryer, is ducted direct to the HVAC system.

Passenger Lift Specification

The Passenger Lift is designed primarily for the transportation of laundry from the Laundry Room on Level 1 to the highest level of cabins on Level 5. It is designed to accommodate 2 persons plus a laundry trolley.

The design criteria for the Passenger Lift is as follows:

- Travel: 14.6 meters (Deck Level 1 to Deck Level 5)
- Stops/Openings: 5 Stops/5 Openings (Open Front Only)
- Maximum Load: 375 Kgs
- Car Internal Size: 830mm wide x 1120mm deep x 2050mm high
- Shaft Internal Size: 1680mm wide x 1650mm deep

A Lift Control Room is provided at Level 5. Ventilation and/or heating is provided to maintain the shaft, lift car, and Control Room temperature between 15 and 25°C. As the car is not air-tight, ventilation to the shaft also ventilates the car, to maintain the required temperature.



Passenger Lift



Counter Tops and Cooking Equipment

Galley Equipment

All Kitchen equipment is of robust construction, functional in design and fire corrosion resistant in accordance with SOLAS requirements.

Counter tops is stainless steel with butt joints and rolled edge turn down to 180°. Counter tops is extended to provide a 150mm splash-back where appropriate. Under shelves, interior of hot cupboards, and all exposed construction are stainless steel. Cold rooms are supplied and installed as complete proprietary modular systems including wall panels, ceiling, doors and floor panels. All these items are sandwich construction, enclosed and sealed on all faces and edges, consisting of fire retardant non-toxic insulating core and stainless steel facing panel.

Galley roller shutters at the server and dirty return is stainless steel in construction and manually opened. Shutters are held open by an electromagnetic release unit wired to the fire and gas system on an 'energized to hold' logic. In the event of fire, the system will de-energize the unit causing the shutter to close.

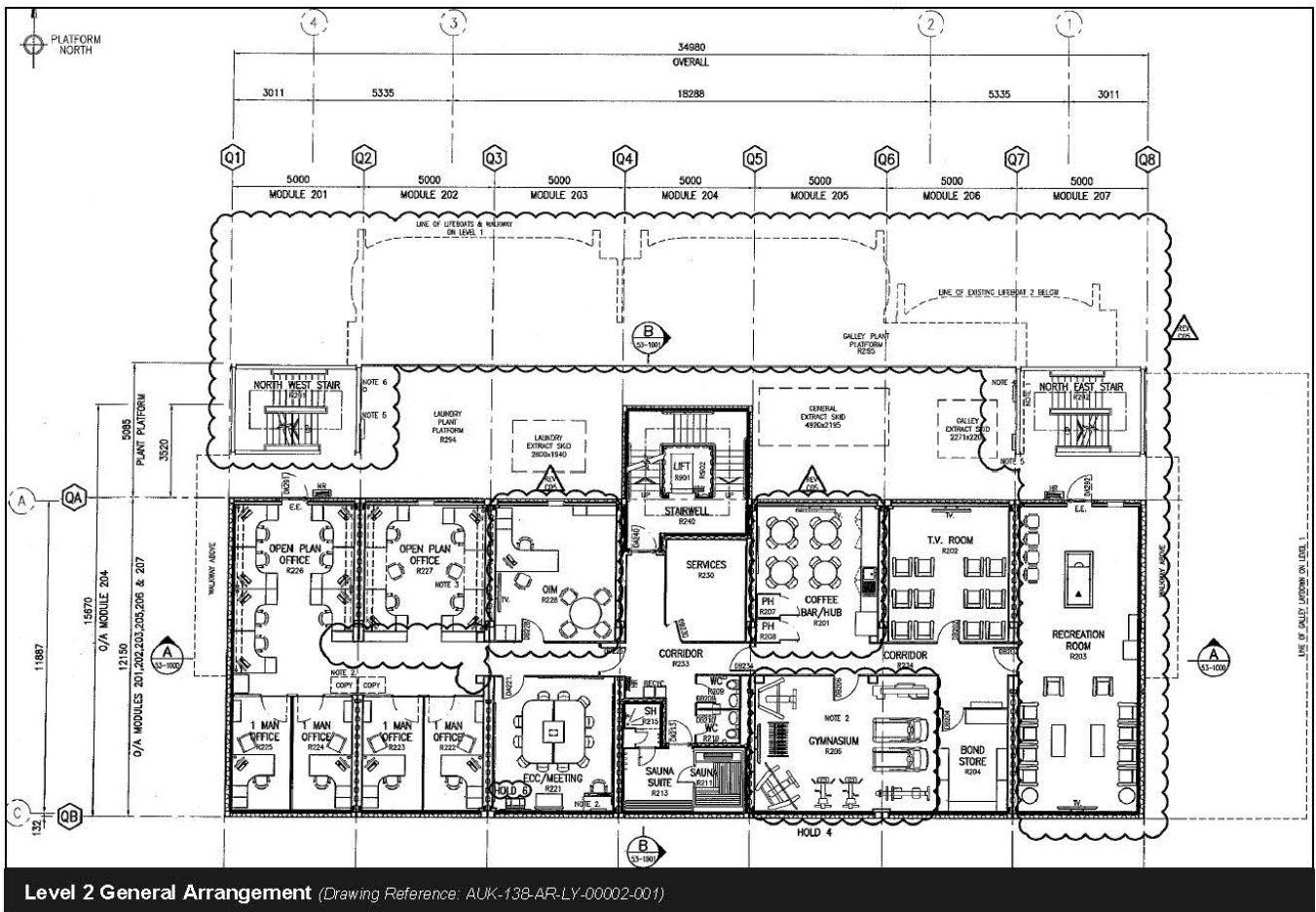


Mixer and Kitchen Furniture

LEVEL 2

Architectural General Arrangement

- Recreation Room
- TV Room
- Smoking Room
- Quiet Room
- Telephone/Beverage Area
- Gymnasium
- 2 x WC's with WHB's
- Sauna with Shower Area
- OIM Office
- Meeting/ICC Room
- 4 x Single Man Offices
- Open Plan Office Area
- Stair/Lift/Services



Level 2 General Arrangement (Drawing Reference: AUK-138-AR-LY-00002-001)

Acoustic/Noise Levels

Acceptable acoustic performance levels are obtained through the isolation of noisy and quiet areas and use of materials that provide sound insulation. Special attention is given to reduce or eliminate noise and vibration generated by plant and equipment on the Living Quarters and their proximity to sleeping and recreational areas.

Architectural Outfitting

External Walls

External profile steel plate with 75mm Rockwool mineral wool foil faced insulation held with pins and washers, 15mm air gap and lined internally with B15 rated, 25mm thick insulated wall paneling system, PVC foil faced, in manned areas. A minimum layer of 5mm thick Chartek (7 or 8 or equivalent) is applied to achieve the H60 rating.

Internal Walls

A partition system has a B15 fire rated classification and is supplied complete with all necessary parts for installation, compatible with ceiling system, bottom sections, vertical joints, access panel accessories, as required. Partitioning in wet areas is supported on bund plates welded to the deck, and all jointing to wet areas are impervious to moisture penetration, and sealed with expanded rubber strips/silicone compound or other approved method. The Plant Room is limited to profiled PVC coated galvanized steel wall panels as mechanical protection to the insulation only.

Ceilings

Ceiling heights is 2400mm throughout the Living Quarters. The entire ceiling system is supplied complete with all necessary parts for installation including edge trim compatible with the walls system. Suspension hangers is welded or bolted to the above structure. The false ceiling is a continuous plank system consisting of 300mm wide. All ceiling panels is removable for access and inspection, flush hinged access panels with concealed fixings are provided.



Single Man Offices, Open Plan Office Area, Coffee Bar, Gymnasium, Sauna Area

External Doors—H60/A60 fire rated

External doors is a variety of sliding and hinged self-closing, marine type, insulated and certified with appropriate fire resistance rating and blast rating equal to the wall rating in which they are located. The entrance door at Level 1 North, the Galley door to the laydown platform, and the door leading in to the Heli-Reception Level 5 is pneumatically operated sliding types. They are also self-closing on an adjustable timer.

Internal Doors—A0/A60 and B15 fire rated

Internal doors is a proprietary marine type, insulated and certified with appropriate fire resistance rating equal to the wall rating which they are located.

Windows

Windows have the same fire rating and blast rating of the wall in which they are installed. They have outer fixed frame of stainless steel and security glass, welded or bolted to the wall and complete with all seals necessary to ensure fire and gas/waterproofing.



Floor Finishes

All flooring is flame retardant to meet SOLAS requirements.

- **Epoxy Resin**

Durable epoxy resin with slip resistant properties. Surfacing is applied in one single layer, to an approximate thickness. At junctions with partitions, the flooring is continued vertically to provide a 100mm (minimum) skirting.

Applied to:

- Male and Female Locker Rooms and Toilets
- Laundry

- Galley/Pot Wash/Galley Vestibule/Dry Store
- Plant Rooms/Services

- **Vinyl**

Heavy-duty vinyl sheet thickness is 2mm (minimum)

Applied to:

- Corridors, Stairs and Airlocks
- Janitor/Linen Stores
- Telecoms Room
- Open Plan Office
- Dining Room
- Gymnasium (sports grade)

- Medical Room
- Bond Store/Camp Boss Office
- Smoking Room
- Emergency Response Room
- Heli-Reception and Heli-Admin

- **Carpet**

100% wool—or 80 wool & 20% nylon

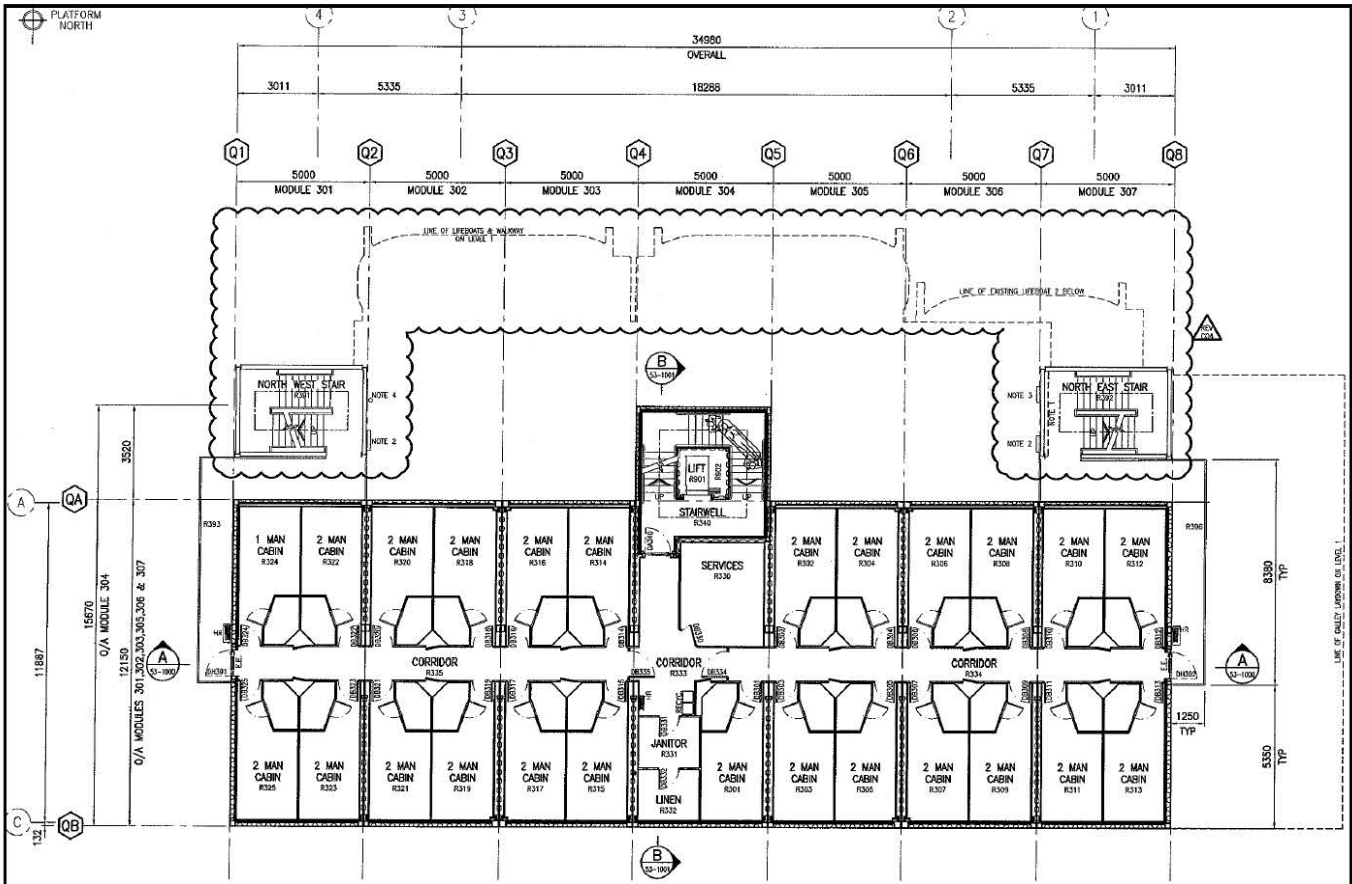
Applied to:

- Cabins
- Offices (1-Person and OIM Only)
- Recreation Rooms Non-Smoking

LEVEL 3 & 4

Architectural General Arrangement

- 25 x 2-Man Cabins
- Janitor/Linen Sotre
- Stair/ Lift / Services



Level 3 General Arrangement (Drawing Reference: AUK-138-AR-LY-00003-001)

Furniture

Generally, furniture is constructed of fire retardant, non-toxic materials, corrosion resistant and comply with SOLAS regulations.

Core materials are pressure impregnated with an approved fire proofing liquid, and full certification of fire resistance.

Smooth surface finish laminates are used, wherever practicable, to facilitate cleaning and maintenance.

All furniture is designed for high durability considering high degree of expected use.

All design and construction eliminates sharp, raw or unfinished edges, and all exposed corners are lipped all round in hardwood.

Hinging and moving part hardware is of good quality cabinet fittings of solid stainless steel or electroplated brass.

Metal furniture is provided with rubber buffers to render the furniture silent in operation.

Fabrics and soft furnishings is flame retardant and non-toxic.



Cabin Furniture

Construction is steel frame with fire retardant laminate and timber facings.

Beds are a minimum of 900mm wide x 2000mm long incorporating 2 x lockable drawer units on nylon glides or rollers. Mattress is 150mm thick fire rated contract grade sprung interior.

Storage cupboards are provided (3 full height storage units providing 6 half height lockable cupboards) complete with space for grab bags.

A writing desk unit with drawer under and chair is provided. Desks are screwed to the adjacent partitions and units.

A light unit is fitted at each bed and is suitably located to allow the bed occupant to read whilst seated in bed and a flat screen TV is mounted at the base of each bed.

Privacy curtains to all bed/bunks are fire resistant to BS476.

Sanitary Equipment

Sanitary fittings for cabins bathrooms and for public toilets are white vitreous china, suitable for heavy-duty usage. Fittings elsewhere is stainless steel 316L.

Bathroom units are self-contained modular marine type wet unit.

Wet Units are provided with the following:

- Wash Basin with Cabinet over (cabinet has mirrored door, light and shaver outlet)
- Thermostatically controlled shower unit
- Towel/Coat hooks
- W.C.
- Toilet roll holder
- Soap dish and toothbrush holder
- Shower Curtain

Wet units are fully aluminium construction. This made a significant weight saving and it also allowed the internal wall finish to be seamless, creating an easier maintenance unit.

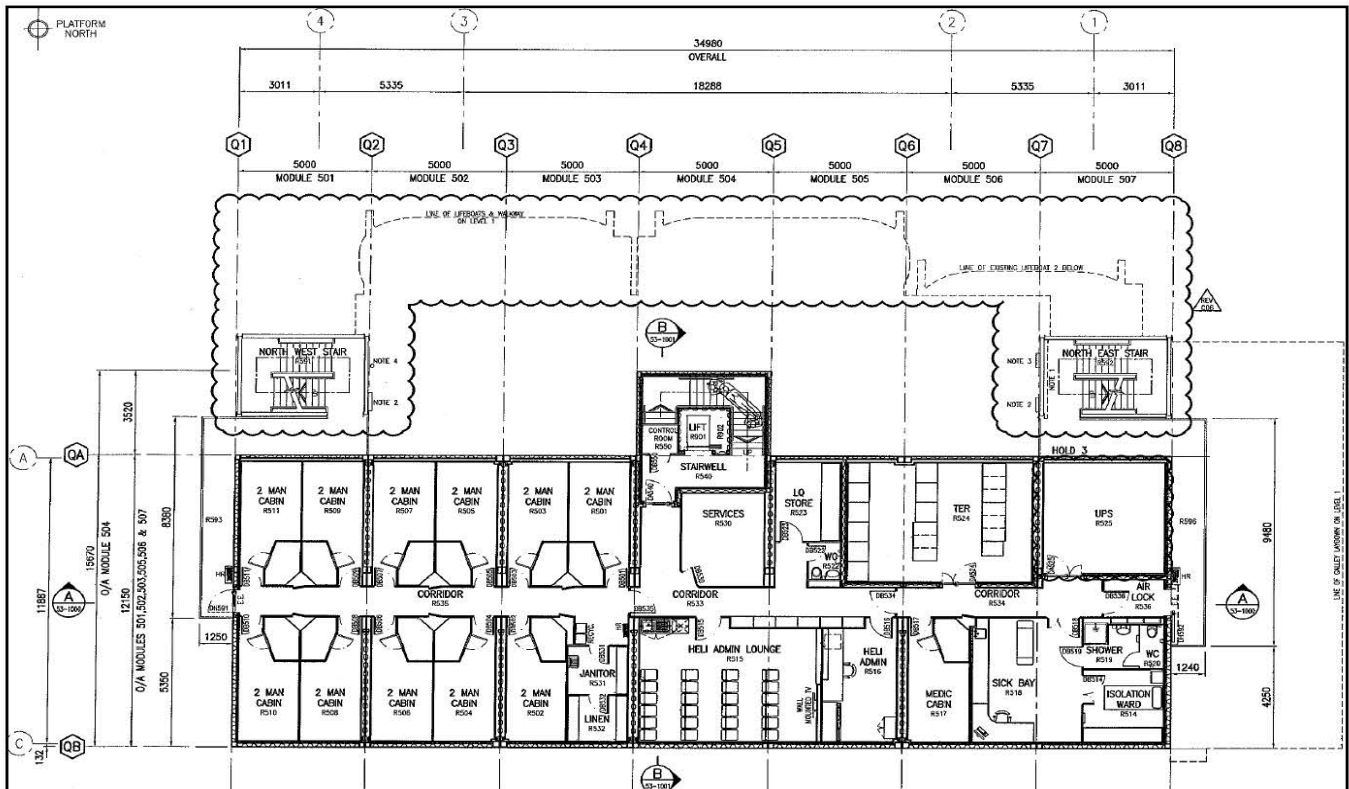


Typical Wet Unit

LEVEL 5

Architectural General Arrangement

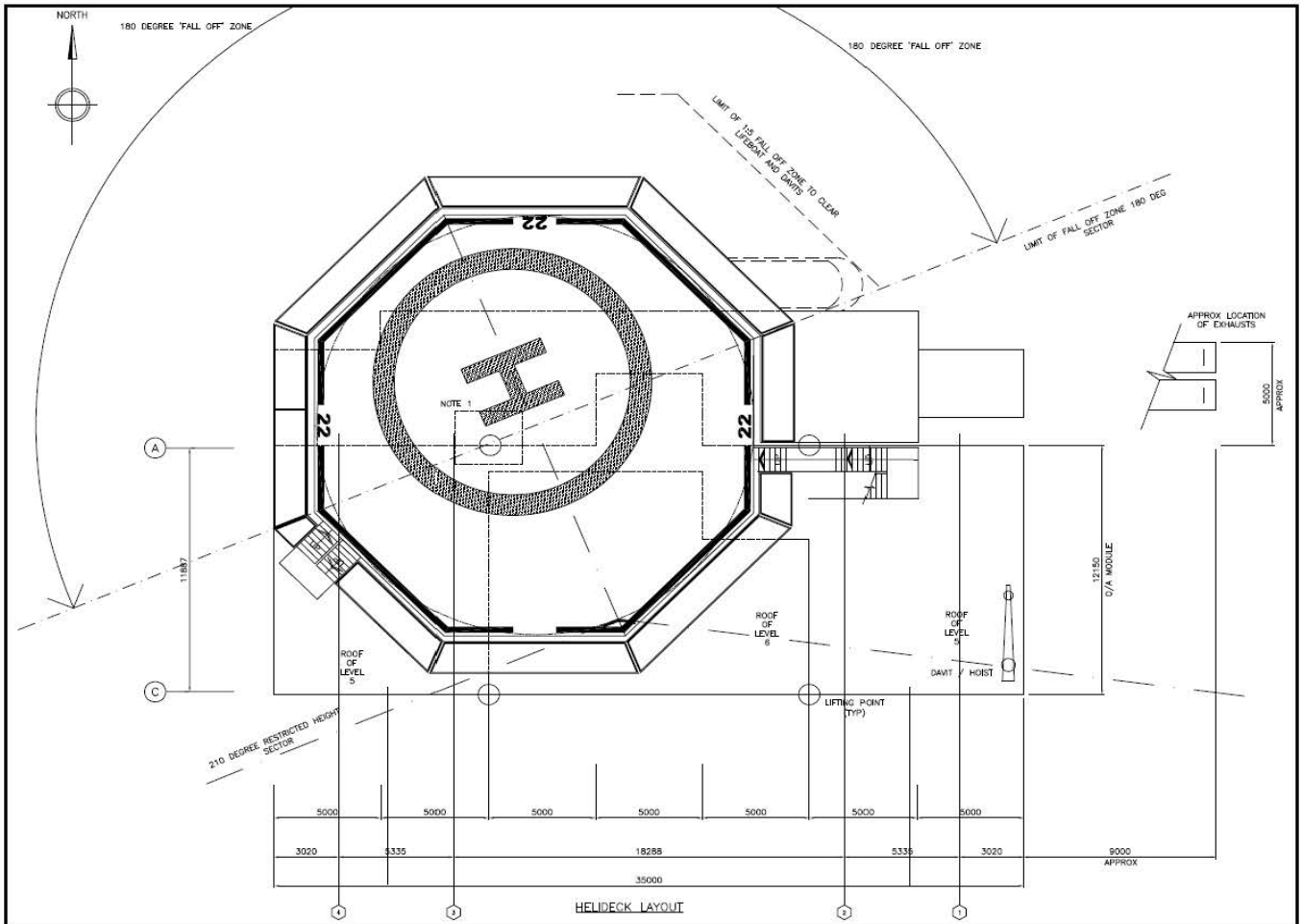
- Medical Room with adjacent Medics Cabin (1-Man Cabin)
- Telecoms Room
- UPS Room
- Stair/Lift/Services
- Janitor/Linen Store
- Unisex Toilet
- Heli-Lounge
- Heli-Admin
- 8 x 2 Man Cabin
- 3 x 1 Man Cabin
- Store



Level 5 General Arrangement (Drawing Reference: AUK-138-AR-LY-00005-001)

HELIDECK

New Aluminium Helideck Complying with CAP437 (6th Edition)



Helideck Layout (Drawing Reference: AUK-138-AR-LY-00007)

Helideck Features

Aluminium Helideck with:

- Aluminium Support Structure includes
 - 2 Main Trusses
 - 6 Transverse Trusses
 - Slope 1:100 included in the steel support structure
 - Interface Plates for fixing to the steel structure
 - Isolation Pads and Sockets at interface points
- Aluminium Landing Surface with Safedeck, includes
 - Blasted Deckprofiles
 - Bolted Aluminium 1-470 main frame
 - Earthing points
 - 18 Helicopter tie-down points
 - Coverstrips
- Perimeter drainage gutter and drain piping, includes
 - 6" outlets
 - Foamshoulder including inserts
 - Inserts base plates for perimeter—floodlights and cable trays

- Drainage Piping
- Threshold Plates/Grating at Access Points
- Stainless Steel Safety Net complete with an Aluminium Net Support Frame
- 1 removable panel for lifting

Helideck access

- 2 Access Platforms including Planking and Handrail
- 2 Stairs with Handrail
- 1 Removable Panel for Lifting

Lighting

- Helideck Lighting
 - 25 Perimeter Lights
 - 4 Flood Lights
 - Wind Direction Indicator
 - Access Way Lighting
 - Control Panel
- Helideck Status Light
 - High Intensity Main Light
 - Low Intensity Supplementary Light
 - Control Panel
- Cables
- Cable Glands
- Stainless Steel Cable Trays

Fire Fighting

- DIFF System (Seawater Only)
 - 16 Pop-up Nozzles
 - 1 Valve with Actuator
 - 1 Indoor Remote Operating Panel
 - 2 Manual Push Buttons
- 2 Hydrant Cabinets
 - Complete with Nozzle
 - Hose
 - Foam Inducer
 - Foam Tank
 - AFFF, for Initial Refill

- 2 ABC Dry Powder Extinguishers, wheeled 25kg
- 1 CO₂ extinguisher with Lance, wheeled 22kg
- Firewater Piping (GRE)
- Rescue Equipment
- Fireman's Equipment
- 3 Ramps for Extinguishers

Lifting

- Lifting Plan for Lifting the Helideck Structure on Top of Steel Structure
- 4 Steel Lifting Lugs



Heli-Admin and Heli-Lounge

GENERAL INFORMATION

DIMENSIONS

Length:	41380mm
Width:	17235mm
Height:	26400mm
Weight:	1300Tonnes

General Accommodation

- Air-conditioned and Pressurized
- Passenger Lift (Servicing Levels 1-5)

Cabins

- Total of 122 Beds
- 60 Double Cabins
- 2 Single Cabins

Changing Rooms

- 249 Lockers

Galley

- Fully Equipped and complete with Pot Wash, Dry Store, Coolers, Freezers

Mess Area

- Seating for 48 persons

Office Space

- 2 x Open Plan
- 5 x Single Man Office
- 1 x Meeting Room
- Heli-Admin & Heli-Lounge Area

Medical Area

- 1 x Sickbay
- 1 x Treatment Room

Plant Room

- HVAC System
- Fresh Water Treatment Plant
- Distribution Boards



External Side Overview of the 120 POB Living Quarters

LIVING QUARTERS

DNV Certified 120 POB Accommodation Modules with Helideck



Exterior Back Overview of the 120 POB Living Quarters

120 POB Accommodation Modules with Helideck. Unused. Constructed by Consafe completed in 2012. Designed and Built for North Sea. Currently in Quayside UK. Available Immediately.