


APC SPECTRA

LEVEL: BR6

PROPOSAL – SSV-SV- 25112018



Pictures for reference purpose only

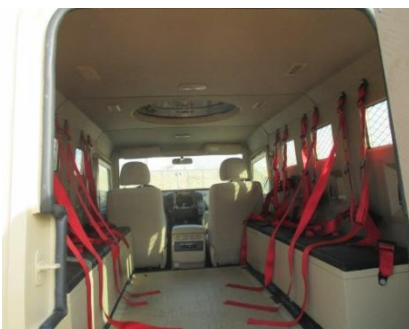
Toyota Land cruiser -200 SERIES CHASSIS WITH 10 SEATER APC

OEM Chassis Specifications:

- € Toyota Land Cruiser - GXR - 2018 YM – 4.5 Liter – Diesel - lhd
- € Engine : configuration 4.5Ltr, V8, Twin Turbo Diesel Intercooler Engine
- € Output (hp/rpm) 232/3200
- € Torque (kg-m/rpm) 62.7/1800-220
- € Transmission 6 Speed Automatic : 232 HP, 62.7 Kg-m (SAE Net)
- € Terrain 4x4 Full-Time
- € Tyres Size 285/60 R17
- € Dimensions : Size- LxWxH (mm): 5095x1980x1890
- € Wheelbase (mm): 2850
- € Fuel Tank Capacity 90 L

ARMOR CONVERSION MODIFICATION / ALTERATIONS

- Five side armoring of passenger compartment (roof and verticals) to provide protection against 7.62x51mm in accordance with CEN-B6 Level, at zero degree obliquity angles.
- Floor of the vehicle is fitted with 4 mm Wear Resistant steel 400/450 HB to protect occupants against fragmentation detonation of hand grenades or equivalent.
- Vehicle's armor plates are fully-welded in major joints and stitch welded minute areas using high-intensity MIG welders. The above process ensures the structural integrity is uncompromised by thermal and chemical variations of the material.
- Ballistic steel interior frame provides overlap and backup protection for the large-surface principal impact areas such as the doors and windows.
- Some OEM vehicle features/equipment may be removed or disabled to accommodate for the installation of the armoring materials and other equipment required as a part of the armoring



Pictures for reference purpose only



STANDARD SECURITY FEATURES AND ACCESSORIES

- B6 level radiator protection
- Run flat devices fitted in all vehicles' tires, including one spare.
- Ballistic Steel-case fuel tank protection
- Vehicle battery and ECM armor protection
- Heavy duty front & rear bumper
- 4 view ports, 4 gun ports in each side, one gun port on front & one gun port on back
- 360 Degree search light & B6 level Engine compartment protection
- Electrical winch (9500 LB steel Rope)
- Siren/ Public address system
- Police Light bars, Strobe light 4 NOS
- Optima Dry sell battery
- Jerry Can- 2 NOS
- Slotted disc & heavy duty brake pad
- Adjustable OEM side view mirror
- Snorkel for better air flow
- Motorized Windshield grill (Can operate from inside the vehicle)
- Separate control unit for additional accessories
- Hatch door fitted on roof
- Expanded metal grill protection for windshield, view ports, head lights & indicators
- Large door frame overlaps; 360 degrees
- Seating capacity- 10 passengers (including driver)
- 4 point safety harness for rear occupants
- All rear air conditioning points installed are similar to OEM position
- OEM roof lights & 2 additional LED lights are fitted in the vehicle
- All three doors having 2 or 3 point dead lock system
- Vinyl covered aluminium internal paneling
- Bottle jack: 10 ton capacity
- OEM RIM with Heavy Duty Tyres
- Heavy Duty door hinges, designed for extended longevity and easy maintenance
- Suspension components are reinforced as necessary to compensate for additional weight of the vehicle.
- All manuals and written information provided by vehicle manufacturer is included with the vehicle



Pictures for reference purpose only



Pictures for reference purpose only

GLASS

- A combination of glass, polycarbonate and Mylar are bonded together using the latest technology, producing one of the finest transparent armors available while incorporating the following qualities:
- Glass thickness: 40mm.
- Anti-spall shield protecting against shattering glass
- Multiple impact protection
- Finest optical quality, Minimal distortion
- No de-lamination, no discoloration from UV rays





INTERIOR

- All original OEM interior panels and trim will be resized or modified and re-installed wherever possible to obtain as close to an original look as possible
- The cargo area of the vehicle is protected by a swing door with view glass without disrupting the original manufacturer's appearance.



Pictures for reference purpose only

RUN FLAT SYSTEM

- Dynamic System made of 2 or 3 antiballistic composite segments bolted around the wheel rim which remain fixed on the rim when the tyre is fully inflated but slip anticlockwise to the forward rotation of the tyre and wheel when the tyre is deflated, compensating for the difference in diameters between the tyres (inflated and deflated) on each side of the axle.
- A 3-segment System designed and manufactured to cover 50 km on road (3km at escape speed up to 90km/h, 10km at 50km/h and 37km at 25km/h) or 40 km off road at 20 km/h in deflated mode.

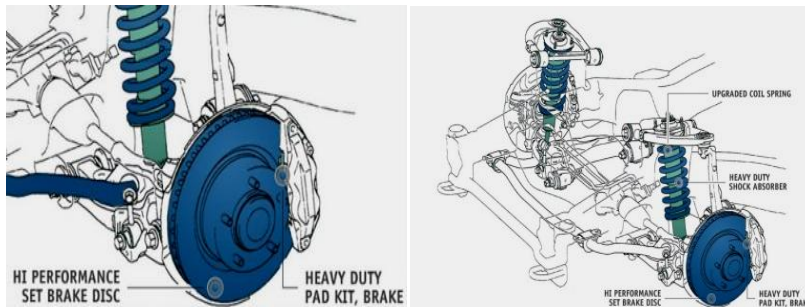


ELECTRICAL

- All electrical equipment standards to this vehicle shall be tested and modified as necessary to protect against the armoring process.
- Any additional (optional) electric equipment installed on the vehicle shall be individually fused; all wires are loomed and clearly marked, as required by vehicle safety standards.



Pictures for reference purpose only



SUSPENSION & BREAK SYSTEM

- The Heavy duty Shock Absorber range is 100% designed and engineered with sensitive damping and our exclusively engineered valve with Teflon banded piston, to improve the ride, handling and safety characteristics of the vehicle.
- Slotted rotors and heavy duty brake pads for the better performance.



VEHICLE POST-CONVERSION WEIGHTS

- Armored vehicle weight: 4.7 to 4.9 Ton
- The weight of armored vehicle may vary due to optional equipment installed or design changes requested by the client. The approx. weight of the vehicle is available after the construction process is complete.

Additional Options

1. Roof mounted 360 degree traversing turret with perimeter protection – USD 2JÍ 0
2. Duel Battery system - USD 1Í 00
3. Heavy duty Alternator 250 Amps - USD 9JÍ
4. Intercom system for communication – USD 1Í 1 0
5. upgraded break kit including caliper - USD 4JJÍ
6. Heavy Duty alloy RIM (1700 kgs capacity) 1 Pc - USD I 60
7. Under carriage of the vehicle is fitted with integral blast Protection to protect the parts under the vehicle - USD G800

BALLISTIC PROTECTION LEVEL DETAILS

Class	Type of Weapon	Caliber	Type	Mass g	Test conditions			
					Test Range m	Bullet Velocity m/s	Nr. of strikes	Striking Distance mm
BR1	Rifle	0,22 LR	L/RN	2,6 ± 0,1	10,00 ± 0,5	360 ± 10	3	120 ± 10
BR2	Hand gun	9 mm Luger	FJ1)/RN/SC	8,0 ± 0,1	5,00 ± 0,5	400 ± 10	3	120 ± 10
BR3	Hand gun	0,357 Magnum	FJ1)/CB/SC	10,2 ± 0,1	5,00 ± 0,5	430 ± 10	3	120 ± 10
BR4	Hand gun	0,44 R Magnum	FJ2)/FN/SC	15,6 ± 0,1	5,00 ± 0,5	440 ± 10	3	120 ± 10
BR5	Rifle	5,56 x 45* 7.62x39	FJ2)/PB/SC	4,0 ± 0,1	10,00 ± 0,5	950 ± 10	3	120 ± 10
BR6	Rifle	7,62 x 51	FJ1)/PB/SC	9,5 ± 0,1	10,00 ± 0,5	830 ± 10	3	120 ± 10
BR7	Rifle	7.62 x 51 AP	FJ1)/PB/SC	9,5 ± 0,1	10,00 ± ,5	830 ± 10	3	120 ± 10

L - lead	
CB - coned bullet	1) Full Steel jacket (plated)
FJ - full metal jacket bullet	2) Full copper alloy jacket
FN - flat nose	* Twist length (178 ± 10)mm
HCl - steel hard core, mass (3,7 ± 0,1) g, Hardness more than 63 HRC	** Twist length (254 ± 10)mm
PB - pointed bullet	RN - round nose





MATERIALS USED FOR ARMORING

- **Glass:** We use high quality Glass produced by AGP Glass (USA) , Lumi Glass & Glass Shield (UAE)
- **Steel:** use of high quality certified ballistic steel produced by Quardian(Belgium)/Swebor(Sweden)
- **Suspension:** use of high quality TJM/ Outback suspension (Australia) for our B6 vehicles.
- **Run-flats:** Hutchinson (USA)/ Europlast (Germany) Run flats are inserted in all tires including spares.
- **Brake pad:** Hawk, USA
- **Rotor:** DBA, Australia

Warranty and after sales service

Armoured Vehicles warrants any armour related items installed, and conversion related custom workmanship, including transparent armour, for the period of 1 years or 20,000km, whichever comes first. Any suspected warranty related work must first be confirmed as being necessary by means of technical consultation with a representative of Armoured vehicle.

Pricing:

- Price Per Units, **Ex Work UAE : USD 145000.00**
- Price Per units, **C & f Sea Freight Yangoon Seaport – Angolia : USD 5800.00**

Payment terms:

- 80% of the contract value to be paid at the time of order, 20% upon completion and acceptance of the work, prior to delivery.

Delivery

- 04 units will be ready for delivery within 45 working days from confirmation of the order.

Validity : 15 Days

- General Terms and Conditions of Business apply. Completed vehicles remain [~] property of until receipt of full payment.

LIABILITY & DAMAGES:

- Any future liability to the buyer/third party under this contract will be limited to the warranty terms. Seller will not be liable for any other future claims.



DOCUMENTS REQUIRED

- Passport Copy with validity page (if Buyer is an individual person) or Trade License Copy (if Buyer is corporate entity).
- Passport Copy with validity page or Trade License Copy should be attested by the embassy/ Consulate of End-user country.
- Original End User Statement issued/stamped by the Ministry of Foreign Affairs of the End User's country and addressed "To Whom It May Concern" (template to be provided by Seller).
- No Objection Certificate copy from Ministry of Foreign Affairs of the End User's country.
- No Objection Certificate from the Consulate of End User Country – addressed to the Ministry of Foreign Affairs