

MODULAR

QUALITY BUILDS DREAMS



ASIAN DRAGON

INTERNATIONAL INCORPORATED

EVERYTHING
under the sun

PRODUCT CATEGORIES

LIGHT STEEL FRAMING HOUSE



01



KNOCKDOWN CONTAINER HOUSE

WORKSHOP & WAREHOUSE



03



SANDWICH PANEL HOUSE

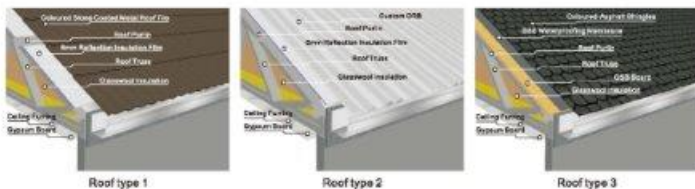


LIGHT STEEL FRAMING HOUSE

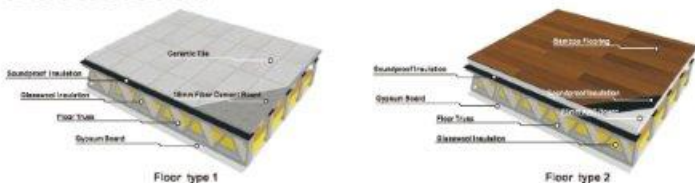
- High strength for 9 degree anti-seismic, 17degree anti-typhoon performance.
- High prefabrication, more than 50% process are finished in the factory, comparing with traditional structure, accuracy can be within 1mm, reduce site work and cut down the construction cost.
- Hot galvanized steel framing can effectively prevent corrosion and rust. Besides, all structure are built in water-proof sandwich panel wall, no corrosion, mould, and worm damage. The life span of the structure can reach 100years under normal circumstances.
- High strength steel makes the thickness of bearing wall greatly reduced, combined with Build-In pipes and wire, allow 20% more living area than concrete and brick house.



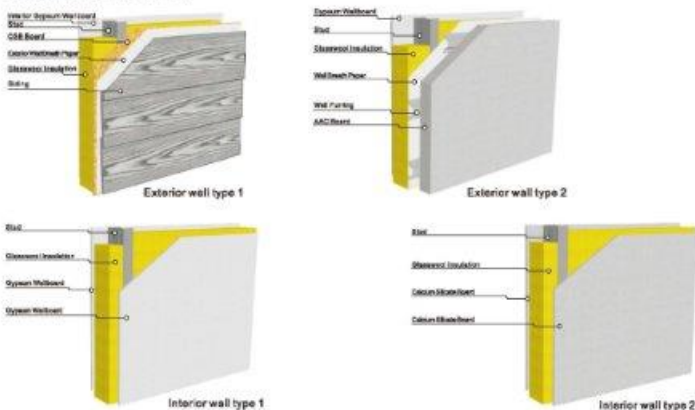
ROOF SYSTEM



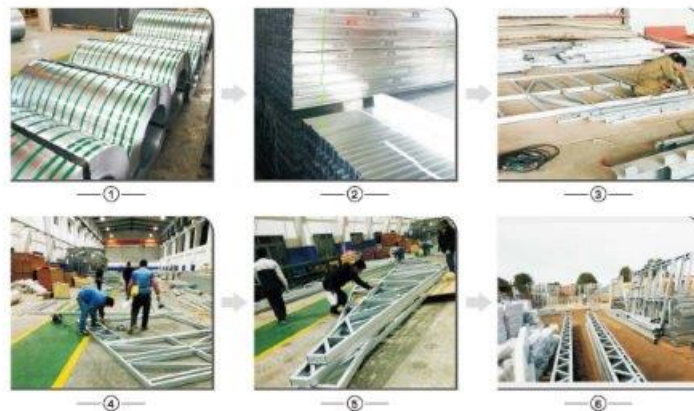
FLOOR SYSTEM



WALL SYSTEM



PRE-ASSEMBLED



ASSEMBLED ON SITE



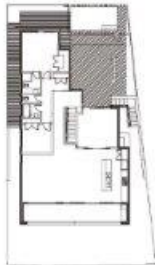
PROJECT DISPLAY



PROJECT DISPLAY



GROUND FLOOR PLAN



UPPER FLOOR PLAN



ELEVATION 1



ELEVATION 2



ELEVATION 3



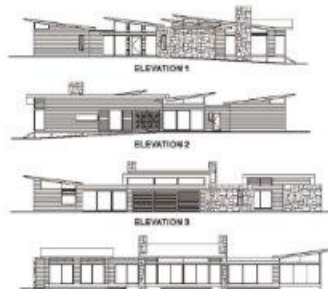
ELEVATION 4



PROJECT DISPLAY



GROUND FLOOR PLAN



ELEVATION 4



PROJECT DISPLAY



GROUND FLOOR PLAN

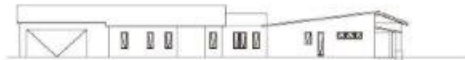


ELEVATION 1

ELEVATION 2



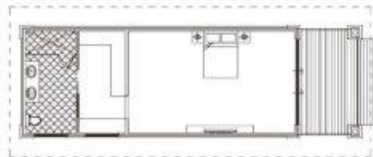
ELEVATION 3



ELEVATION 4



PROJECT DISPLAY



GROUND FLOOR PLAN



RIGHT ELEVATION



FRONT ELEVATION



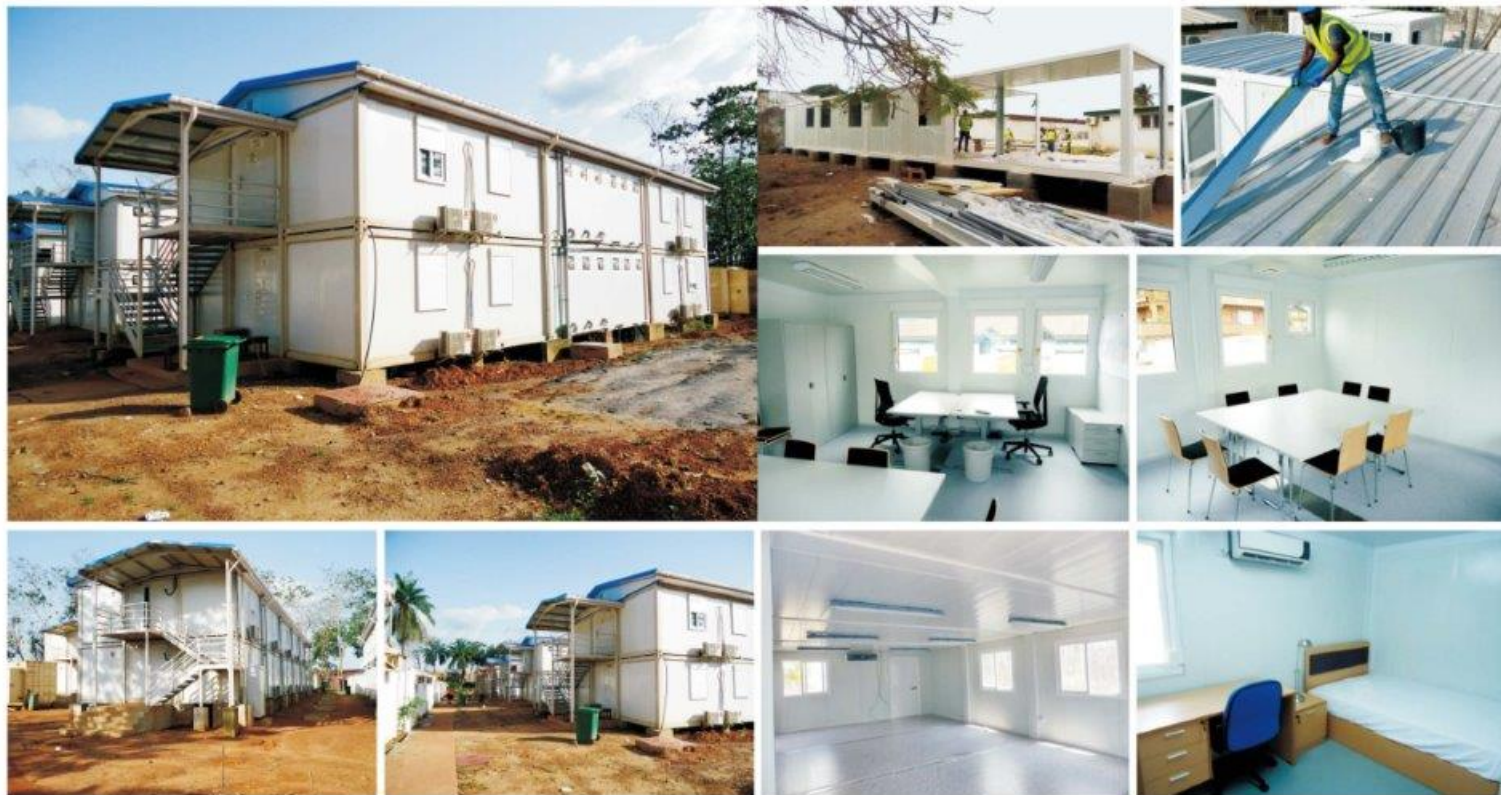
KNOCK DOWN CONTAINER HOUSE



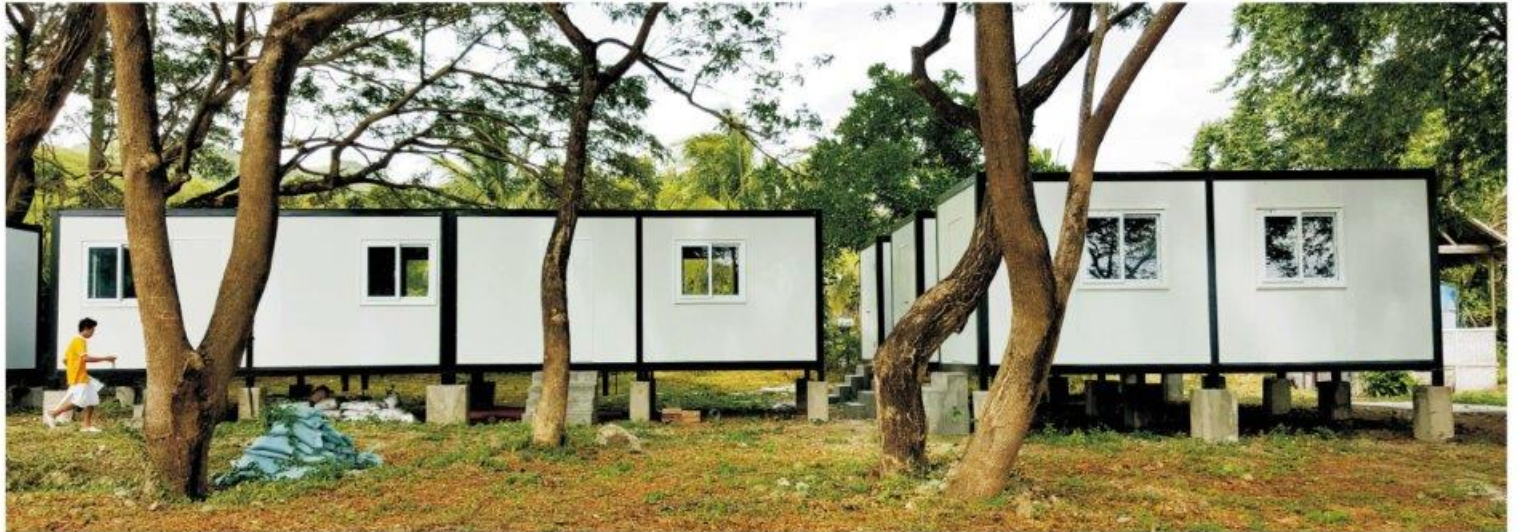
- Knock down container house is a revolution from flat pack container.
- Suits for shipping, land-carriage, and also for temporary or semi-permanent buildings, such as site office, settlement point or residential. The dimension owns various connections, such as lift on/off, fix or assemble.
- The main structure of container house — base frame, top frame and side wallboards to form a light weight structure, quickly to folding out and disassemble the components.
- The construction enables compounding of individual container house in transverse or longitudinal directions without limits, and can also be 2 or 3 stories, thus enlarging the space and function.



PROJECT DISPLAY



PROJECT DISPLAY



PROJECT DISPLAY



PROJECT DISPLAY





WORKSHOP & WAREHOUSE

As important member in steel structure family,portal frame is widely used in long span house ,it main feature is low steel usage per unit,easy installation and maintenance,low cost.

- The main structure use H steel,maintenance structure use Type C or Z purlin.
- The main structure use red lead anti-corrosive pain,using hot galvanizing treatment towards to seaside buildings.Maintenance structure use Galvanized steel strip shape.
- Considering the unload difficult during container loading,we will use our self-regulating steel panel,greatly facility clients site unload.
- With regard to ordinary plant,our architects can provide whole drawings according to clients requests.Using software 3D3S for structure design and software TEKLA STRUCTURE for detail design.



PROJECT DISPLAY



A	B
C	D E

- A Indonesia Workshop Project
- B Philippines Warehouse Project
- C Mozambique Farm Project
- D Sudan Warehouse Project
- E Algeria Poultry House Project

PROJECT DISPLAY



A	B
C	D

- A New Caledonia Shopping Center Project
- B Saudi Arabia Children Play Center Project
- C Chile Warehouse Project
- D Oman Workshop Project

PROJECT DISPLAY



A	B
C	D

- A Maldives Stadium Project
- B Lebanon Logistics Center Project
- C Mexico Logistics Center Project
- D Tanzania warehouse Project

PROJECT DISPLAY



A	B
C	D

- A Lebanon Warehouse And Workshop Project
- B Lebanon Unifil Project
- C Ghana Showroom Project
- D United Arab Emirates Workshop Project

SANDWICH PANEL HOUSE



- Prefab k house is a kind of modular house, is made by light gauge steel structure and PPGI sandwich panel, and combined using standard modules. It is a new type of energy conservation and environment protection house which is easy and convenient to install.
- It is designed for various purpose, widely used as temporary and semi-permanent site office, labor camp, canteen, warehouse, school, hospital, affordable house. It has modularized component and connections for fixing and compounding. Prefab k house is designed as a light construction, consisting of floor system, wall system and roof system. It also enables compounding of 2 floors in height (ground floor+first floor) or 3 floors in height (ground floor+2 floors).
- Prefab k house is made of light insulation panel and offer comfortable climate in the interior due to their building and physical properties. Materials been used are environmental friendly.



SANDWICH PANEL HOUSE



Prefab T house is made by light steel and sandwich panel.

- Widely using in different industry, temporary house for road, railway and construction site etc.
- It can be as temporary office, meeting room , headquarters , public accommodation , and temporary store , school, hospital , parking lots, show rooms, electric house , repairing shop , gas station etc.
- Prefab T house is the most suitable for third world countries and developing country where the infrastructure construction happening everyday.
- The steel structure can be inside the wall or on the wall. The structure is connected by bolts and the walls are fixed with rivets. The steel structure parts and panels are light and easy to pack and transport.
- The prefab house can be broken-down and reassembled more than 6 times and has a service life of more than 15 years.

PROJECT DISPLAY

