

Stainless steel bus shelter Specifications:

Size:W4095mm x H3192mmxT1765mm

Material:1.2mm #201 stainless steel

Panel:tempered glass

Light Source: LED side light for double sided light box;

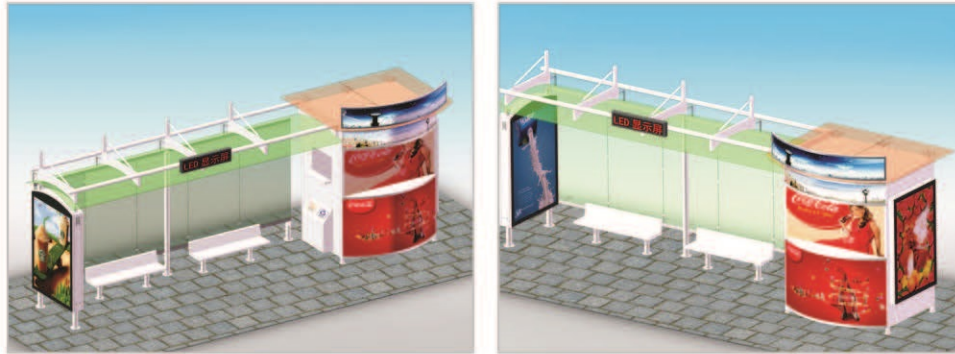
T8 tubes (6pcs) for triangle light box

Double sided light box size:W1350xH2037(Visual SizeW1190xH1720)

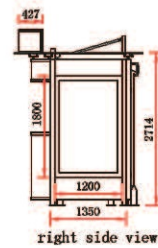
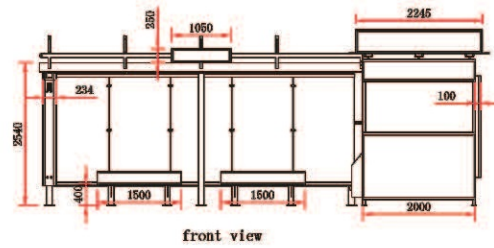
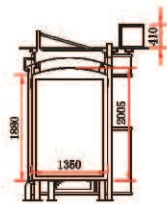
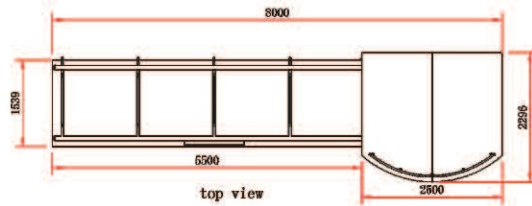
Triangle light box size:W894xH2592mm

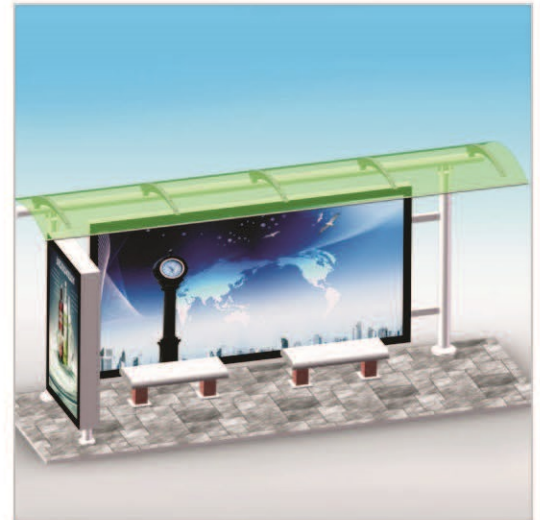
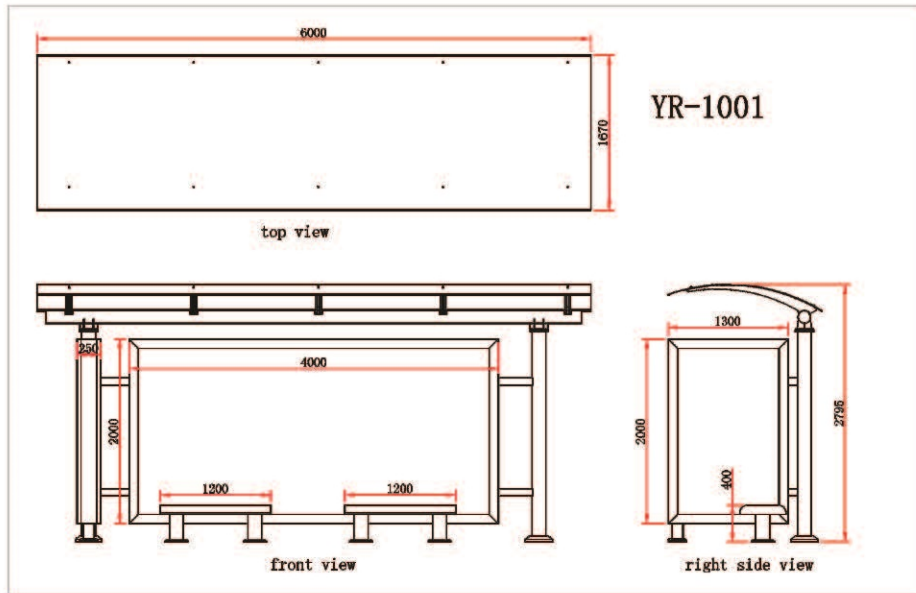
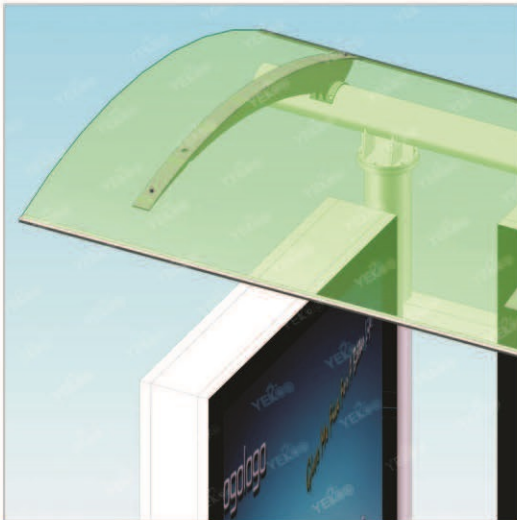
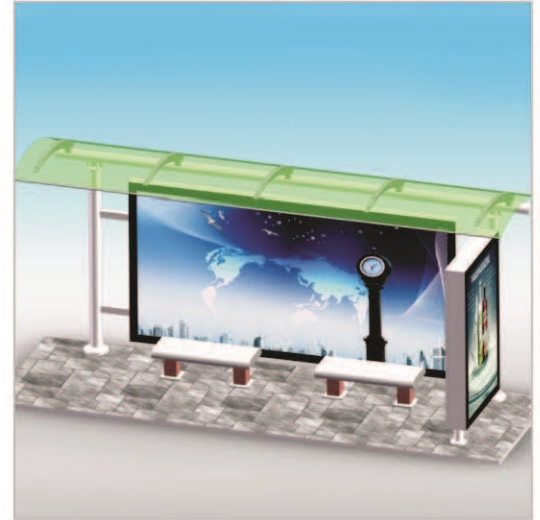
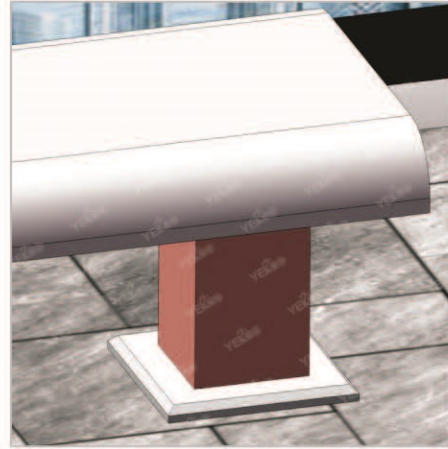
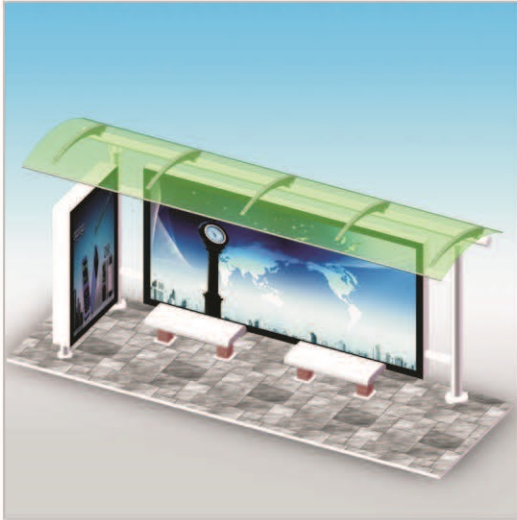
Three advertising area size W525xH825mm(one),W601xH1676mm(two) with dustbin

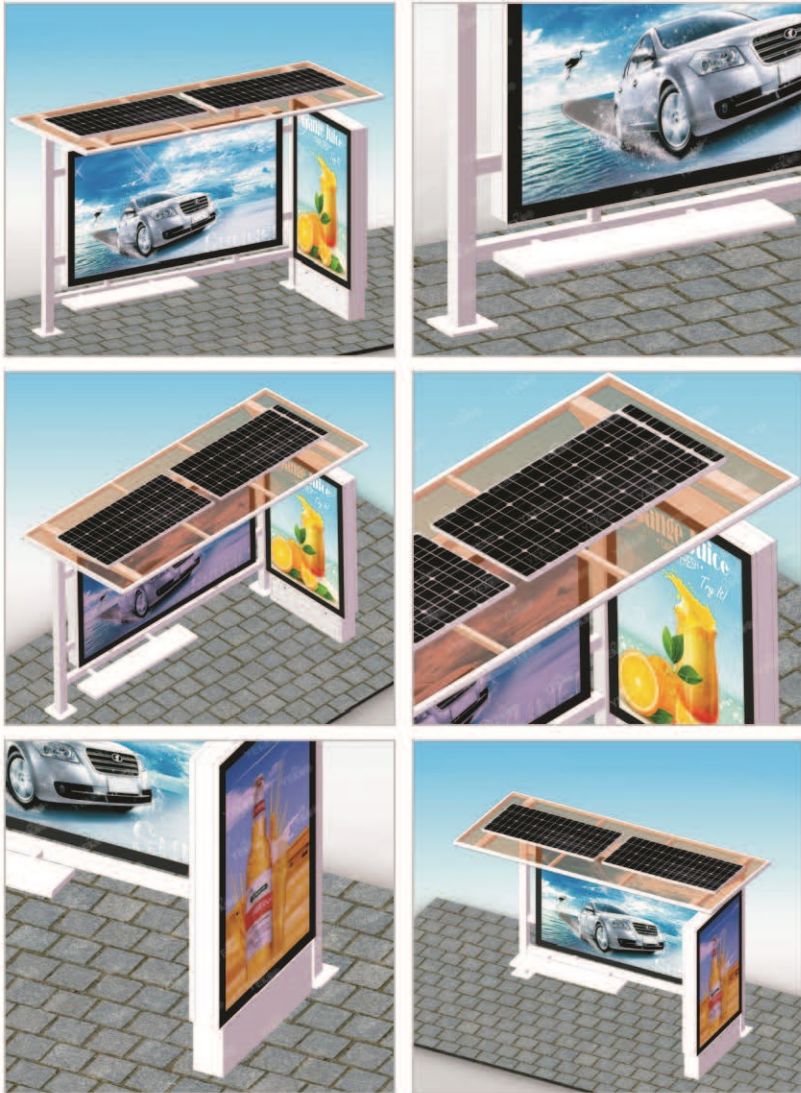
Packing: carton,15pcs for one 40HQ



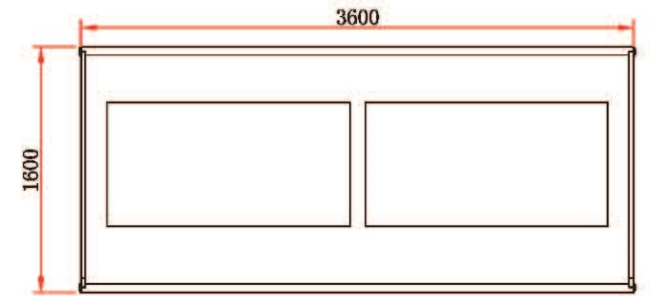
YR-1024



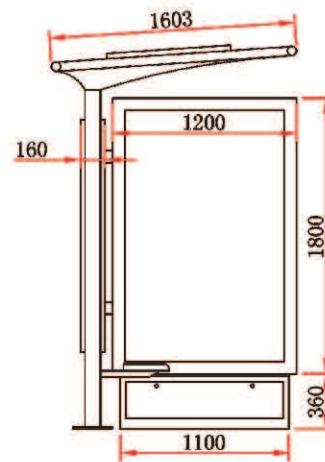




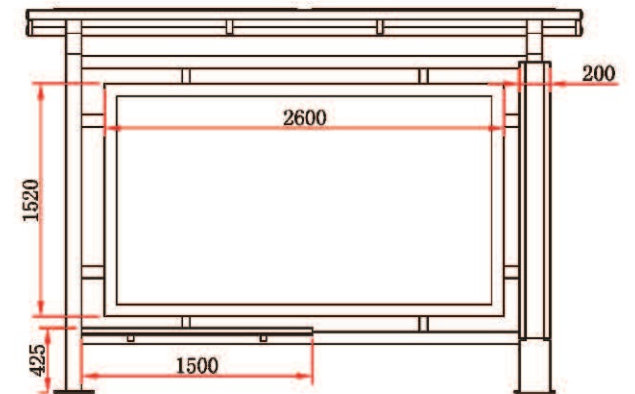
YR-1029



top view



left view

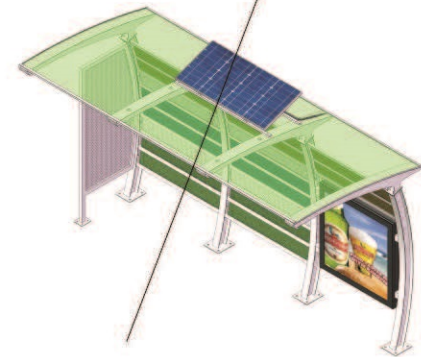
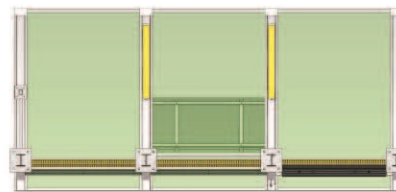
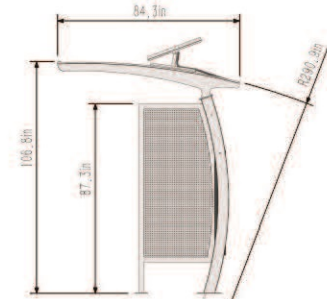
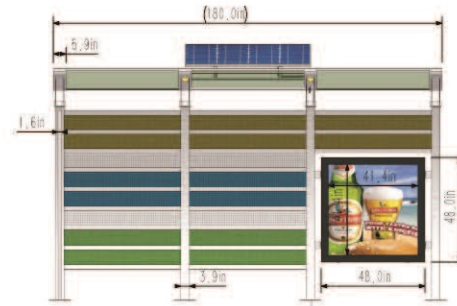
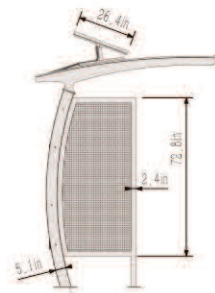
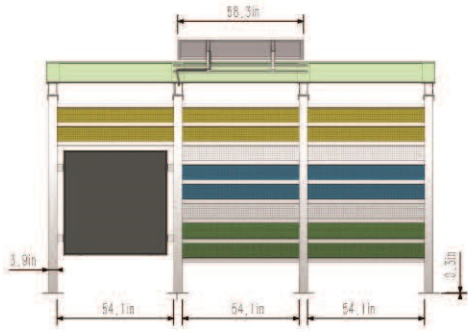
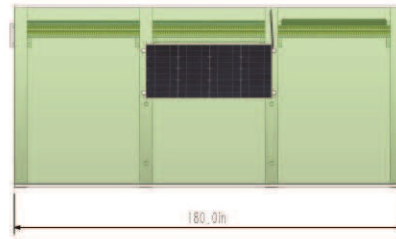
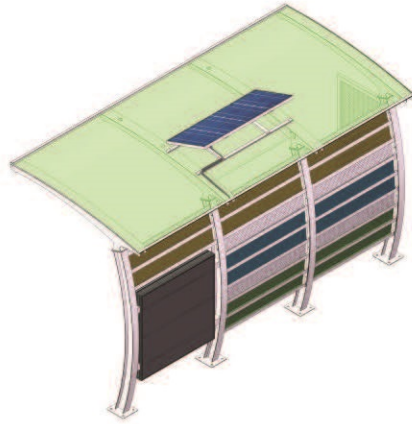


front view

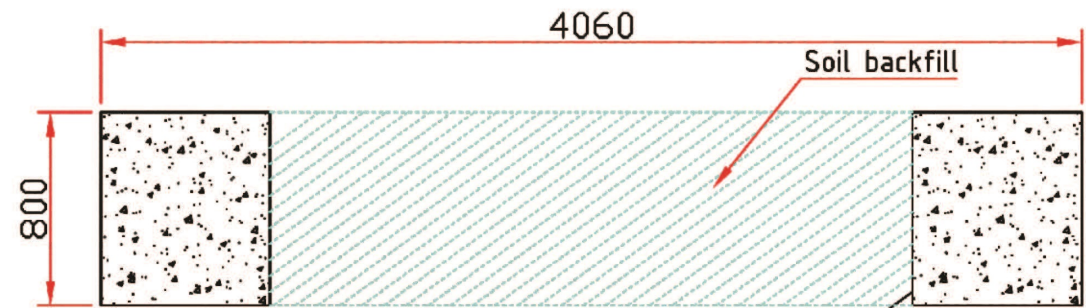
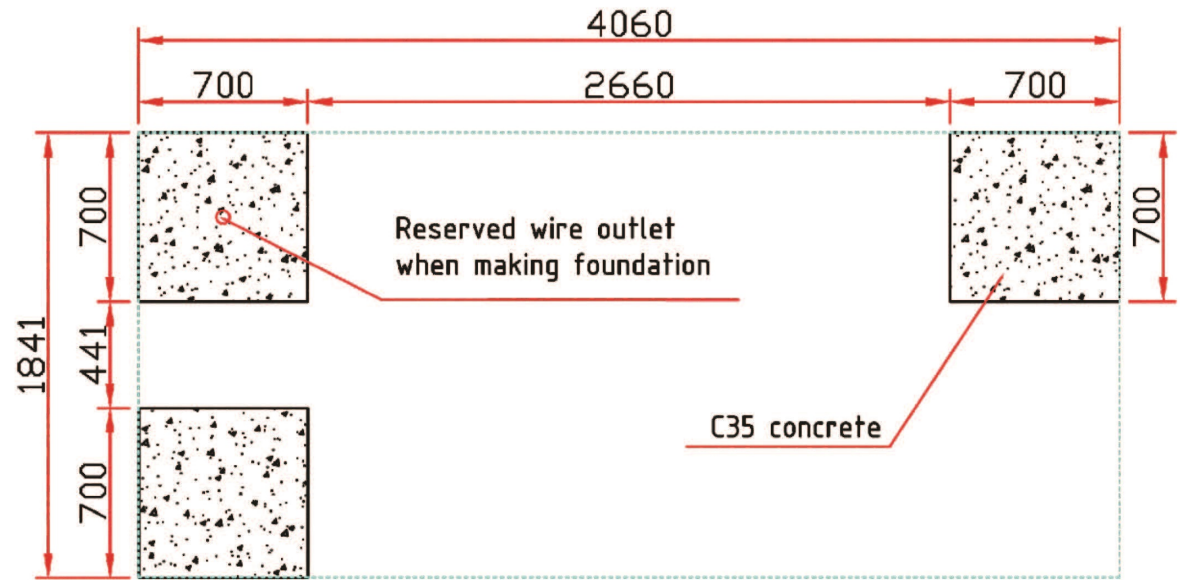
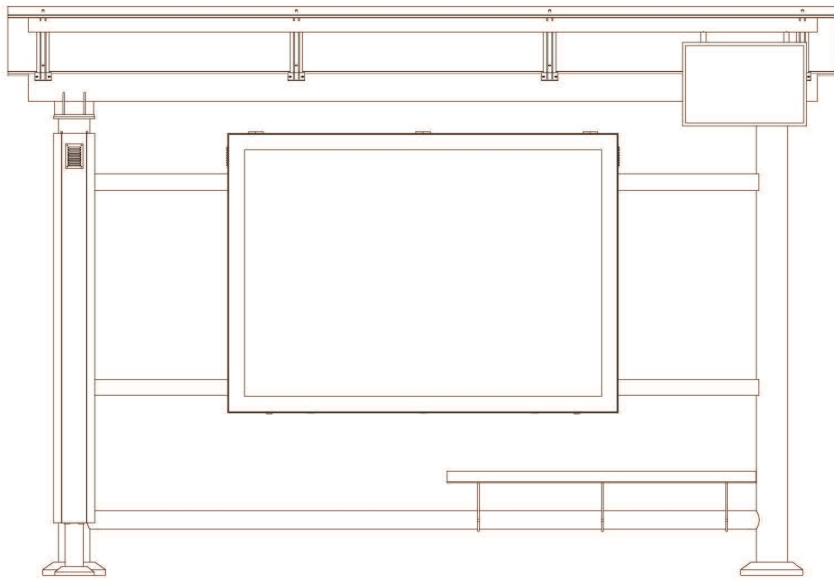


ASIAN DRAGON

INTERNATIONAL INCORPORATED



Foundation drawing



Installation

