

**NAME:**

3500T/3850T CRANE SHIP

**CLASSIFICATION:**

CCS (China Classification Society)

**MAIN PARTICULARS:**

Length overall 148.40 m  
Length waterline 148.00 m  
Beam 45.30 m  
Depth 12.00 m  
Operation draft 8.50 m  
Scantling draft 9.50 m

**TONNAGE.....**

Gross tonnage 27239.00T  
Net tonnage 8171.00T

**ACCOMMODATION:**

14x 1 - man cabins	14 men
8 x 2 - men cabins	16 men
19 x 4 - men cabins	76 men
43 x6 - men cabins	258 men
1 x8- men cabins	8 men
TOTAL	372men
HOSPITAL	45m2

**RESCUE EQUIPMENT:**

Life boat PS 1x128 persons  
SB 1x128 persons  
Life rafts 48xpersons

**MAIN MACHINERIES:**

Work generator sets 3x 1000kw  
Aux. generator sets 2 x 400kw  
Emergency gen set 1 x 100kw

**CARGO DECK:**

Clear main deck area ~35000 m2  
Loading Deck measurements ~1200m2  
Deck load capacity 4000 T  
Deck strength 20t/m2



**8 POINT MOORING WINCH**

Moorings winches 8\*800 kN,  
Rope diameter  $\Phi$  120 mm;  
Storage capacity 400m;  
Rated Speed (rated load) 15 m/min

**1 POINT WINDLASS**

Windlass 1\*800KN  
Anchor chain  $\Phi$  80 mm(AM2)  
Storage capacity 385m;  
Rated Speed 9 m/min

**ANCHORS.....**

Type SPEK 11500kg\*1pcs  
Type DELTA 14260kg\*3pcs  
14270kg\*5pcs

**DECK CRANE...**

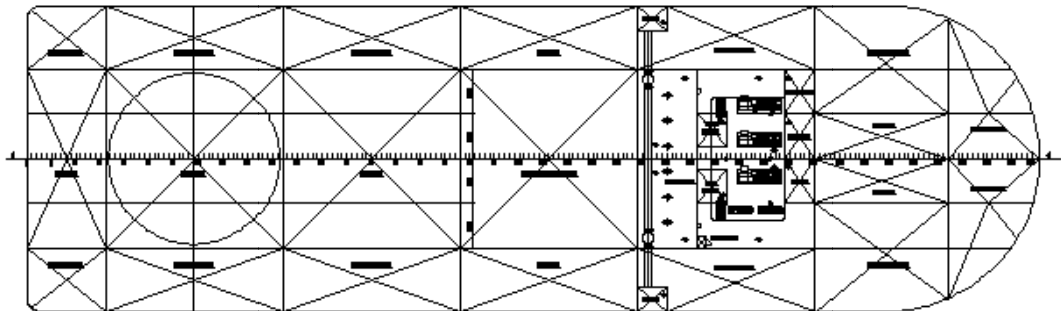
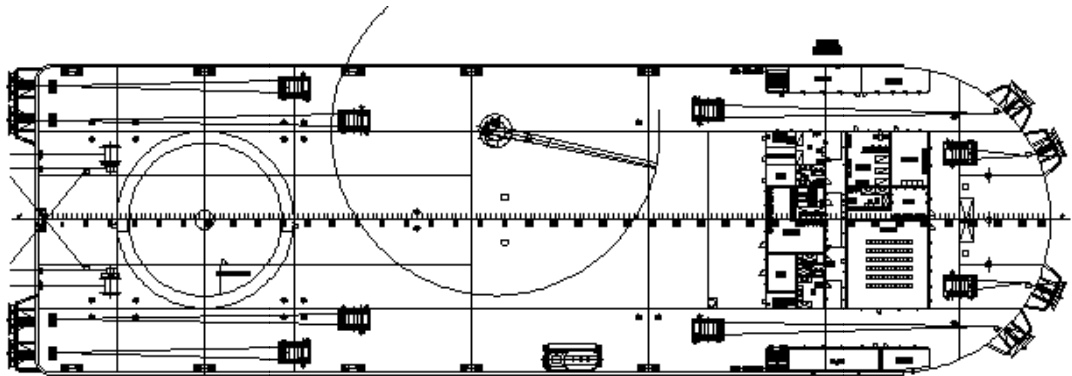
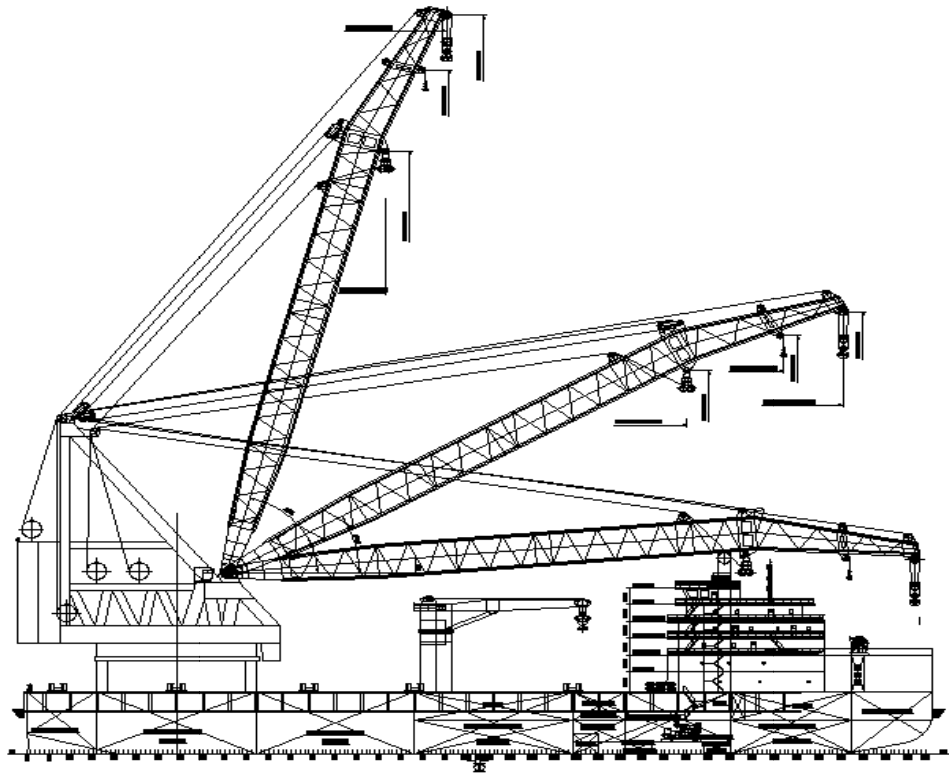
Working load 40t  
Max. working radius 32.8m  
Hoisting speed (SWL) 8m/min

**SUMMARY**

3500T crane barge + 372men accommodation  
Fixed lifting capacity 3500T  
Revolving lifting capacity 2800T

When crane is in fixed lifting status, boom angel in 75°,  
Main hook boom frame latitude at 37m, testing lifting capacity is 3850ton,  
Aux. hook boom frame latitude at 84m, testing lifting capacity is 726ton

# GENERAL ARRANGEMENT



## CRANE FUNCTIONS AND TECHNICAL SPECIFICATIONS

	SWEEP ANGLE	25°	30°	35°	40°	45°	50°	55°	60°	65°	70°	75°
MAIN HOOK	Operating Radius (m)	90.1	86.9	83.1	78.8	73.9	68.6	62.8	56.6	50	43.1	36.0
	Above Waterline (m)	53.7	61	67.2	73.3	79.1	84.8	89.7	94	97.8	101.2	103.7
	Fix Capacity (t)	1300	1450	1650	1900	2200	2500	2900	3350	3500	3500	3500
AUX. HOOK	Operating Radius (m)	130.8	125.8	120	113.1	105.8	97.6	88.6	79.1	69.2	58.4	47.6
	Above Waterline (m)	73	83.3	93.2	102.1	111.2	119.3	127.1	133.8	139.4	143.6	147.3
	Revolving Capacity (t)	500	500	500	500	500	500	500	500	500	500	500
WHIP HOOK	Operating Radius (m)	157.7	151.4	143.9	135.6	126.3	115.9	105	93	80.8	67.6	54.4
	Above Waterline (m)	84.8	97.4	109.5	121	131.4	141.2	150	157.9	165	170.5	174.7
	Revolving Capacity (t)	300	300	300	300	300	300	300	300	300	300	300

## LOAD CURVE TABLE

