

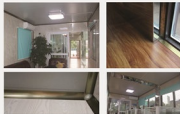


EVERYTHING
under THE **SUN**

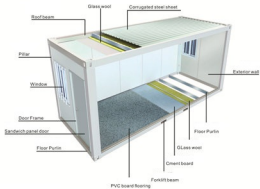


Container House Series

Modular Housing is a freely assemble and nice new box rooms. Modular homes with high seismic strength, corrosion resistance, wind compression capability, long production cycle last, easy to transport, free custom design and a series of characteristics, at home and abroad has become the darling of the new house. Widely used in creative houses, villas, vacation landscape has luxury hotels and high-end stores.



Modulization house



Modular Housing is a freely assemble and nice new box rooms. Modular homes with high seismic strength, corrosion resistance, wind compression capability, the production cycle fast, easy to transport, free custom design and a series of characteristics, at home and abroad has become the darling of the new house. Widely used in creative house, villas, vacation landscape has luxury hotels and high-end stores.

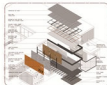




Customers simply requirement to build a nightclub. And hope that people see it automatically attracted at the first glance. The customer also wants.



设计图



LEGEND

- 1. BAR/STAIR
- 2. OPEN-COURT
- 3. BAR COURSE
- 4. STAIRS
- 5. STAIRCASE
- 6. SERVICE ENTRANCE
- 7. BALCONY
- 8. SILENT ZONE
- 9. SERVICE
- 10. BALCONY
- 11. OFFICE
- 12. SERVICE
- 13. SERVICE
- 14. SERVICE
- 15. SERVICE STAIRCASE
- 16. PARKING



设计图

Each case individually assembled, transparent glass breaks the airtight container on both ends. Cabinet inside and outside is decorated with red and yellow in the gray city stands out in the background. The original container monomer after split, restructuring, and renewable for new space.



1. Consultation
2. Arkium
3. Outdoor Platform
4. Presentation Model
5. Office



Modulization house



The seaview hotel, located in vancouver, has three buildings and a modern stylish group of units. The seaview hotel was designed and operated for six months. It is quite different than the traditional beach hut, but definitely not's troublesome and expensive.



Modularization house



The container leisure restaurant project is located in the New York City of the United States. A quiet space in a busy city to make people stop and hurry Step, quietly enjoy the beauty of life. This design involves holding A design concept of industrial modularization is proposed. The innovation of architecture makes it close to nature and artistic.





Container House is a new generation of prefabricated housing products, is different from the traditional mobile home integration products. But also reflects the comfort and convenience, the main market for temporary building site, construction workers and office accommodation. The product as the basic unit, may be used alone, combined or superimposed to meet various use. When used in combination with container and container, quick and easy installation. The product can be used repeatedly, and the life span up to 15 years.

Container house have the main components: windows and all assembly bolts packed into a small envelope, before train apart to the customer. When you need to install it, just open the envelope, install it according to the installation instructions inside. Installation is simple and convenient, just 2-3 workers, within 30 minutes to complete the installation.



Single household



Step1



Step2



Step3



Step4



Step5





Collapsible containers . is a major part of the all parts refers to a container (wall, side wall, roof, etc.) can simply fold or decomposition, again when using can be together again.





Light Steel Villa Series

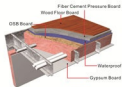


Light Steel Villa house is designed for low-rise residential villas, commercial buildings and the design and development of environmentally friendly energy-efficient buildings. Houses by the strong overall high specification to meet the structural design requirements, is currently the best performance of a house. Light Steel villa can reach insulation, thermal insulation, sound insulation, waterproof, moisture, corrosion, earthquake, wind effects, normal life can reach 30 years.

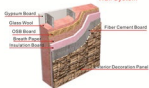
Light Steel Villa House



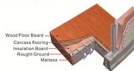
Floor System



Wall System



Ground System



Roof System



Construction Steps



Foundation & Frame The foundation is the same as normal concrete house which is very to finish. The frames will be packaged according to different parts before shipment.



Water, Electricity & Stairs Installation The frames have been packaged according to different parts of the house before shipment.



Roof, wall & Floor construction Various materials of insulation and waterproof for our customer to choose.



Exterior & Interior Decoration Due to the variety of exterior wall panels of LGS house, the appearance of the house can be decorated as beautiful as you like. Any styles of the house you dream of can be true.



Light Steel Villa House



Light steel villa performance:

The main load-bearing of low-rise cold-bending thin-walled steel assembly system is cold bent. The wall section steel and the structural plates are composed of the dense floorwall structure. The structure is light weight, can resist the earthquake and wind speed up to 50 m/s.



Light Steel Villa House



Light steel villa performance:
The main load-bearing of low-rise cold-bending thin-walled steel assembly system is cold bent. The wall section steel and the structural plate are composed of the dense floor-steel structure. The structure is light weight, can resist the earthquake and wind speed up to 50 m/s.



Light Steel Villa House



Light steel villa performance:
The main load-bearing of low-rise cold-bonding thin-walled steel assembly system is cold beam. The wall section steel and the structural plate are composed of the dense formwork structure. The structure is light weight, can resist the earthquake and wind speed up to 50 m/s.



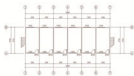
Light Steel Villa House



Light steel villa performance:
The main load-bearing of low-rise cold-bending thin-walled steel assembly system is cold bent. The wall section steel and the structural plate are composed of the dense room wall structure. The structure is light weight, can resist the earthquake and wind speed up to 50 m/s.



Prefabricated houses



Ground Floor Plan



First Floor Plan



Back Elevation



Front Elevation



Prefabricated house



国内项目, GLB-2016-430K



国内项目, GLB-2016-520K



GLB-2017-618P



GLB-2017-788P



GLB-2017-848P



GLB-2017-1190K

Prefabricated house



GLB-2014-01CN



GLB-2014-76CN



GLB-2015-76BP



GLB-2016-33BP



GLB-2016-36BP



GLB-2016-451BP



GLB-2015-24CN



GLB-2016-13CN



2016-45CN



GLB-2017-10BP

Guard house

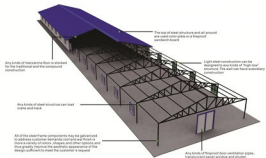
The block is made of PVC made of unique process, which has superior weather resistance and can resist all kinds of bad weather. Whether heat or wind rain and snow, always maintain a stable color, not easy to dust and dirt, easy to clean surface smooth and glossy enclosure. It adopts panel assembly type connection to facilitate disassembly, transportation and transportation.



1. wide use
2. multi-function: single use, double use, can move
3. high-efficiency, flexible and flexible, quick disassembly and assembly, simple, fast and solid
4. high-bearing capacity, high wind resistance coefficient and strong stability
5. block full range of standardization, safe and reliable
6. environmental protection, recyclable
7. It is economical, practical, low cost, small occupation space and long service life



Light Steel Structure



Light steel structure is a young and a dynamic architecture, compared with the traditional concrete structure, with the main force structure is simple, clear power transmission, member making quick, easy processing factory, short construction period, modeling and flexible features reflected light steel, fast, and efficient. Widely used in energy saving new building materials to achieve factory manufacture, construction site assembly, convenient and quick, saving the construction period, durable structure, architecture, beautiful appearance, high quality to price, the obvious economic benefits, column grid size layout flexibility, can to meet the construction and use requirements under different climatic and environmental conditions.



In order to recommend both safe and practical beautiful and economical structure, we generally requires the following elements:

- Dimensions length, width, height, whether there is clear width, clear height requirements;
- Uses business, warehousing, manufacturing, weather store with equipment, goods;
- Entrance the number of pedestrian and vehicular entrance and dimensions;
- Lighting the number of windows, the need for roof lighting;
- Ventilation shades quantity whether typhoon or fan;
- Interior partition use of regional distinction, whether mezzanine;
- Load wind load, hanging loads, floor loads, etc;
- Appearance: single slope, double slope, arched, and even across the other;
- Drainage the need for ditches, pipes;
- Electrical and plumbing the need for electricity, plumbing, kitchen facilities, etc;
- Materials choose the suitable materials after discussing with the seller.



Light Steel Structure



Sandwich Panel

EPS Panels



EPS: EPS (polystyrene) is also called foam board. EPS board is white in color, it is advance thermoforment, then heated and molded with a volatile liquid blowing agent containing polystyrene beads. It has a fine closed cell structure and is mainly used in wall, roof, composite board, the insulation of cold storage, air conditioning, vehicles, underfloor heating, decorating carving.

Glass wool panels



Glass Wool: glass wool is a kind of glass fiber, which is manmade inorganic fiber. Through fibrosis of the molten glass to become cotton-like material. Its chemical composition, it is a kind of glass. The molding is good, bulk density and thermal conductivity are low, heat insulation and sound insulation are excellent, corrosion resistance and chemical performance are stable.

PU panels



PU: PU is short for polyurethane, which is also called urethane rubber or spring rubber. The full name is poly-urethane or isocyanate polymer. polyurethane is elastomer between plastic and rubber with unique combination of their excellent performances. characteristics:anti-abrasion,anti-chemical corrosion,high elasticity,high grease resistance,stable,anti-bearing,anti-radiation,good strength,excellent load bearing andreducing shock on surface,as well as wide range of hardness.

Glass magnesium sandwich panel



MgO sandwich panel is made of the element MgO, MgCl₂ and MgO as modifier in a certain percentage. It is a new noncombustible decorative material that is made of stable magnesium cementitious material, reinforced by neutralizing alkaline fiberglass mesh, filled with light-weight core material. We apply special technology to combine the MgO board with steel panels to become a compound sandwich panel that is fireproof, waterproof, abrasion, non-toxic, non-corrosive, non-flammable, non-brittle, stable, noncombustible, light weight, great strength, easy installation, long life span.

XPS Panels



XPS: XPS (extruded foam board) is a kind of rigid foam board that uses polystyrene as raw material, together with other raw materials and polymer-containing material, through a special process of heating and mixing simultaneous injection of the catalyst, and continuous pressing to form its shape.

Composite cement foam board, also known as foam concrete board, is made from foam (preparation) foaming agent is mixed with cement mixing pouring, forming, then through the maintenance of A cement base light porous inorganic class A insulation board, high fire resistance, Gas Barrier, high durability and other characteristics.





Project Example
CASE Series







Modular House

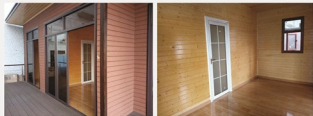


Decoration appreciation





Light steel villa house is designed for low-rise residential houses, commercial buildings and design and development of an environmentally friendly energy-efficient buildings. Housing by strong overall high specification design to meet the structural requirements is one kind of house the best performance Light steel villa to meet insulation ,thermal insulation ,sound insulation ,waterproof, moisture, corrosion, earthquake, wind effect ,normal life can reach more than 35 years.





Framing with light steel structure, flat roof prefabricated house owns the following characteristics:
Good insulation;
Easy and fast to assemble and disassemble;
Convenient to transport : disassembled packing and loaded by truck or container;
Energy saving and environmentally friendly: all parts are produced in factory, will not cause damage to environment;
Stable structure, resisting earthquake and typhoon;
Repeatedly use;
long life span ,normally can be used for 10 to 20 years;
Applicable on slope ,hill ,grassland ,desert ,riverside ,etc.
Customized design, delicate and comfortable and Short production time;





ASIAN DRAGON

INTERNATIONAL INCORPORATED

EVERYTHING
under THE SUN

