

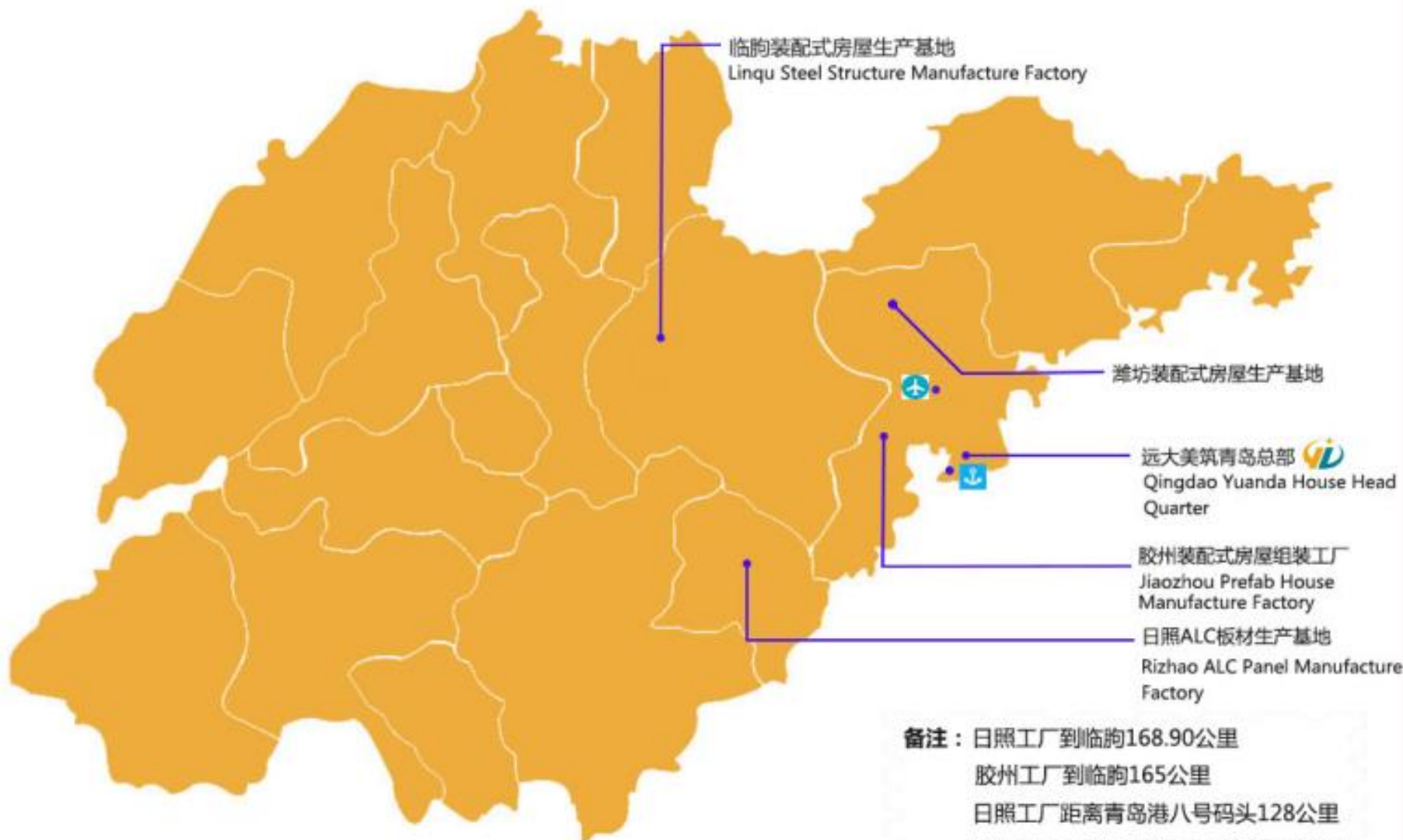


远大美筑
YUANDA HOUSE

Intelligent Thermometric and Sterilized Channel

Product Description





备注：日照工厂到临朐168.90公里
胶州工厂到临朐165公里
日照工厂距离青岛港八号码头128公里
胶州工厂距离青岛港八号码头50.2公里
日照工厂距离胶东国际机场143.6公里
胶州工厂距离胶东国际机场13.6公里

By using
intelligent
thermometric
and sterilized
channel,
Yuanda will
always keep
you safe.

Taking temperature and sterilizing within 10 seconds, give you safe home and safe travel

Intelligent Thermometric and Sterilized Channel

This production can do facial recognition, take body temperature and spray sterilized mist to whom comes in and gets out the public places.



Nowadays, different industries began to resume normal operation. Economy need to go on, so people need to go out.

Thus, here is a question:

How to prevent the virus and disinfect effectively?

Intelligent thermometric and sterilized channel can be applied in all kinds of public places that need people to pass quickly and safely

Fight the virus.

Return to work.

Keep you safe



医院

Hospital



学校

School



社区

Community



工厂

Factory



企事业单位

Enterprises



工地

Construction site



超市

Supermarket



商场

Shopping mall



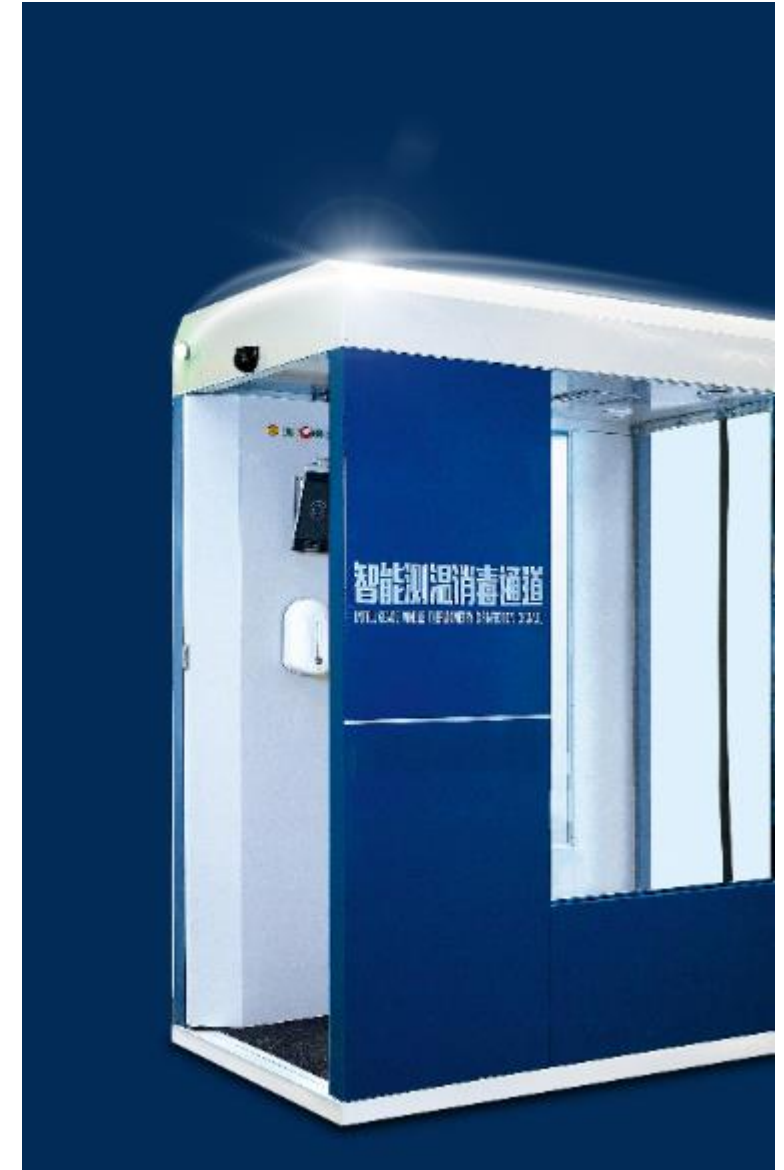
银行

Bank



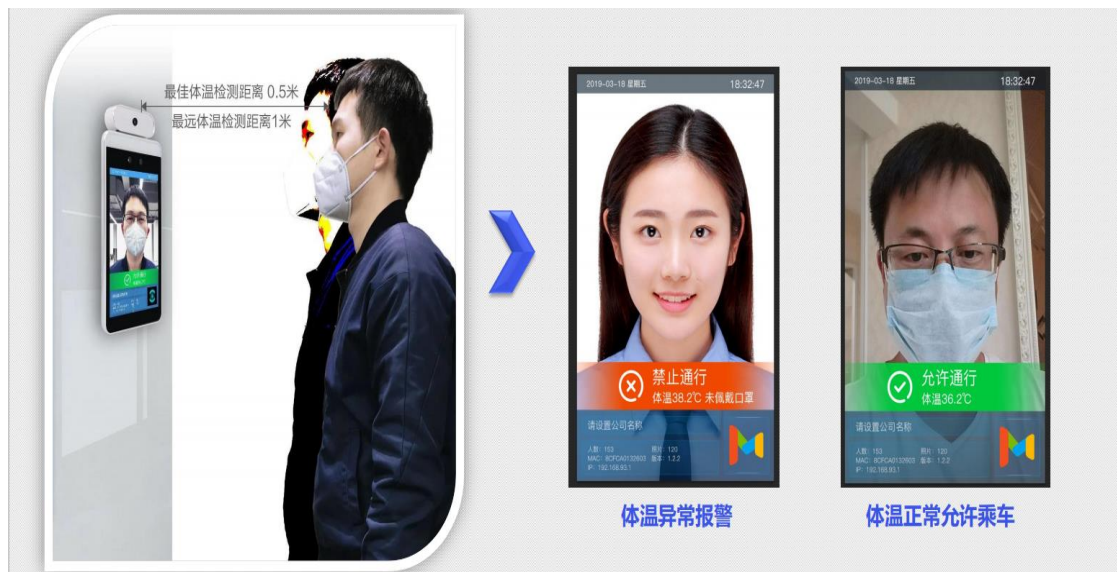
酒店

Hotel



Accurate temperature measurement without contact

- Taking body temperature by using thermal imaging technology
- It can take the temperature and display the data on the screen. The accuracy of the data is less than or equal to $\pm 0.5^{\circ}\text{C}$. The range of the data is between 25°C to 45°C .



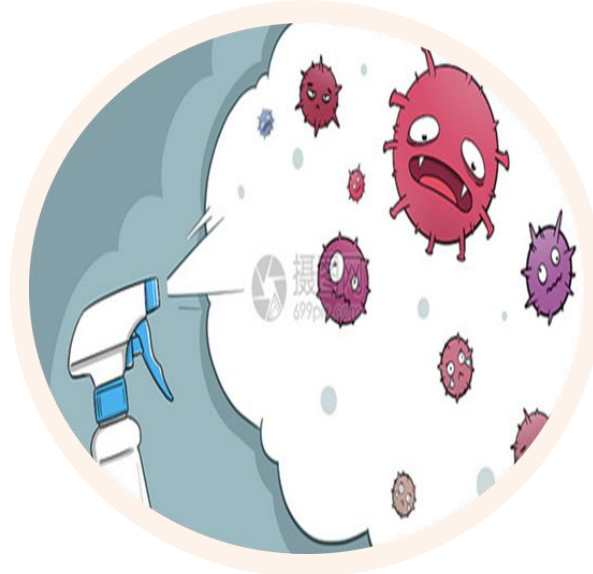
- The product can automatically alarm when people's temperature is high than 37.3°C (temperature reference value can be customized)
- Support automatic alarm of abnormal temperature, just need 1 second to obtain the result.

Eliminate virus in three aspects



Alcoholic disinfection without contact

- Non-contact alcoholic sterilizer specially for hand disinfection. Non-contact inductive sprayer, effectively and safely sterilizes your hand.



Food grade intelligent inductive disinfection

- Quickly eliminate the virus in disinfection area by using food grade sterilized mist. Having intelligent inductive sprayer, safely eliminate all kinds of viruses without manual work.



Disinfect thoroughly

- It has the function to remove dust from the sole of shoes. There is a carpet containing sterilized water in the disinfection channel. Your shoes will be disinfected when you walk through the carpet. Giving a thorough clean for your shoes.

Data information

- The length of the temperature measurement area: 640mm
- How to accomplish induction: facial recognition
- How to accomplish temperature sensing: thermal imagery
- The required distance to take the temperature: 50cm
- Where to take the temperature: forehead(non-contact)
- The accuracy of the collected temperature: $\leq \pm 0.5\text{ }^{\circ}\text{C}$
- The range of the collected temperature : $25^{\circ}\text{C}-45^{\circ}\text{C}$
- The required time to take temperature: 1 second
- The display panel of temperature data: 8-inch display panel
- The output of the temperature: if the temperature is normal, the screen displays the data in green. if the temperature is abnormal,the screen shows excessive temperature and in red, and the alarm is issued, the light turns red.



L179*W110*H239cm

Specification

Overall dimensions	L179*W110*H239cm	The length of the spray channel	115cm	The length of the temperature measurement area	64cm
Available space dimension	H192*W101cm	How to make mist	Ultrasonic atomization	The way to accomplish induction	Facial recognition
Service voltage	AC220V	How to control mist	Start by microwave induction, deferred time to stop (The deferred time is adjustable from 5 to 60 seconds), totally 4 nozzles	The way to accomplish temperature sensing	Thermal imagery
Rated power	900W	The efficiency of making mist	3-6Kg/H	The required time to take temperature	1 second
How many decibels of noise while using	Less than 36dB	How to protect the spray area	Sticky - proof PVC curtain	The required distance to take temperature	50cm
Rainproof function	The shell of equipment has rainproof function (the open-door type channel doesn't have this function)	The required time to do disinfection	Suggest to keep 5 seconds to 15 seconds(according to your requirements,the equipment doesn't have mandatory requirements)	Where to take the temperature	Forehead (non-contact)

Specification

Main material of the equipment	Cold rolled steel sheet	Capacity of the disinfectant tank	20L	The accuracy of the collected temperature	$\leq \pm 0.5$
Service environment	From 0℃ to 42℃ (it can't be used when environment temperature is less than 0℃, as the sterilized water can't be atomized)	The type of the sterilized water	100-400 PPM diluted solution of Chlorine dioxide, 200 PPM diluted solution of Hypochlorous acid	The output of the temperature	If the temperature is normal. The screen displays the data in green. If the temperature is abnormal, the screen shows excessive temperature and in red. The alarm is issued, the light turns red
Temperature display panel	8-inch display screen	The way to disinfect the hand	Inductive spray in independent area, no need to wash again	Capacity of the hand disinfectant tank	1L



远大美筑
YUANDA HOUSE

MAKE THE HOUSE FOR THE SAFE WORLD

THANKS