

AIRCRAFT STATUS REPORT



NOTE: AIRCRAFT SHOWN IS REPRESENTATIVE ONLY.

BOEING 737-400
VARIANT: FREIGHTER

TABLE OF CONTENTS

1.0	INTRODUCTION	3
2.0	AIRCRAFT SPECIFICATION	3
2.1	PRINCIPAL AIRCRAFT DATA.....	3
2.2	AIRFRAME STATUS.....	3
2.3	PRINCIPAL OPERATING WEIGHTS (LB).....	3
2.4	OPERATIONAL SPECIFICATIONS.....	4
2.5	FUEL DATA	4
2.6	CONFIGURATION – 11 PALLET POSITIONS.....	4
3.0	FREIGHT CAPABILITY.....	5
3.1	UNDERFLOOR BAGGAGE DOORS.....	5
3.2	UNDERFLOOR WEIGHT CAPACITIES.....	6
3.3	UPPER-DECK WEIGHT CAPACITIES.....	6
3.4	UPPER-DECK CARGO DOOR	8
3.4	UPPER-DECK “ANCRA” CARGO LOADING SYSTEM	9
3.5	FORWARD FUSELAGE AREA	10
4.0	ENGINE STATUS.....	12
4.1	LEFT ENGINE – CFM56-3C1 – 22K LBF	12
4.2	RIGHT ENGINE – CFM56-3C1 – 22K LBF	13
5.0	APU STATUS	14
6.0	LANDING GEAR.....	14
7.0	MAINTENANCE STATUS	15
8.0	AVIONICS	16
9.0	PHOTOGRAPHS	18

[REVISION 4 – 06-MAY-2019]

1.0 INTRODUCTION

this report details the aircraft status in respect of aircraft type Boeing 737-400 Freighter (Pemco Conversion), This information is provided for informational purposes only, is not part of any proposal, and creates no legal or contractual commitment either express or implied.

The Aircraft offered is subject to prior sale, lease or withdrawal from the market without notice and the engines and gear are subject to change. The accuracy of the information contained herein, is based on the knowledge and information available to the individual who has composed and/or updated this document as of the date specified. As such all data is subject to verification by any potential purchaser or lessee by way of inspection of the aircraft and it's records.

THIS DOCUMENT SHOWS THE AIRCRAFT AFTER CONVERSION FROM A COMBI TO A FULL FREIGHTER WITH THE PEMCO STC.

2.0 AIRCRAFT SPECIFICATION

2.1 PRINCIPAL AIRCRAFT DATA

AIRCRAFT TYPE:	BOEING 737-400F
AIRCRAFT VARIANT:	FREIGHTER
MANUFACTURER'S SERIAL NUMBER:	25100
DATE OF MANUFACTURE:	20-AUG-1992
CURRENT REGISTRATION:	N763AS

2.2 AIRFRAME STATUS

AS AT 06-MAY-2019 [AIRCRAFT LOCATED AT TAMPA, FLORIDA]	
TOTAL HOURS SINCE NEW:	73,435.6
TOTAL CYCLES SINCE NEW:	49,668

2.3 PRINCIPAL OPERATING WEIGHTS (LB)

MAXIMUM TAKE-OFF WEIGHT:	143,500
MAXIMUM LANDING WEIGHT:	121,000
MAXIMUM ZERO FUEL WEIGHT:	113,000
BASIC EMPTY WEIGHT:	71,931 [ESTIMATED – BASED ON RECENTLY CONVERTED SISTER-SHIP]
TYPICAL OPERATING EMPTY WEIGHT:	72,400 [ESTIMATED- 2 FLIGHT CREW + BAGS]
MAX TOTAL PAYLOAD (CARGO):	40,600 [ESTIMATED -MZFW – OEW = PAYLOAD]

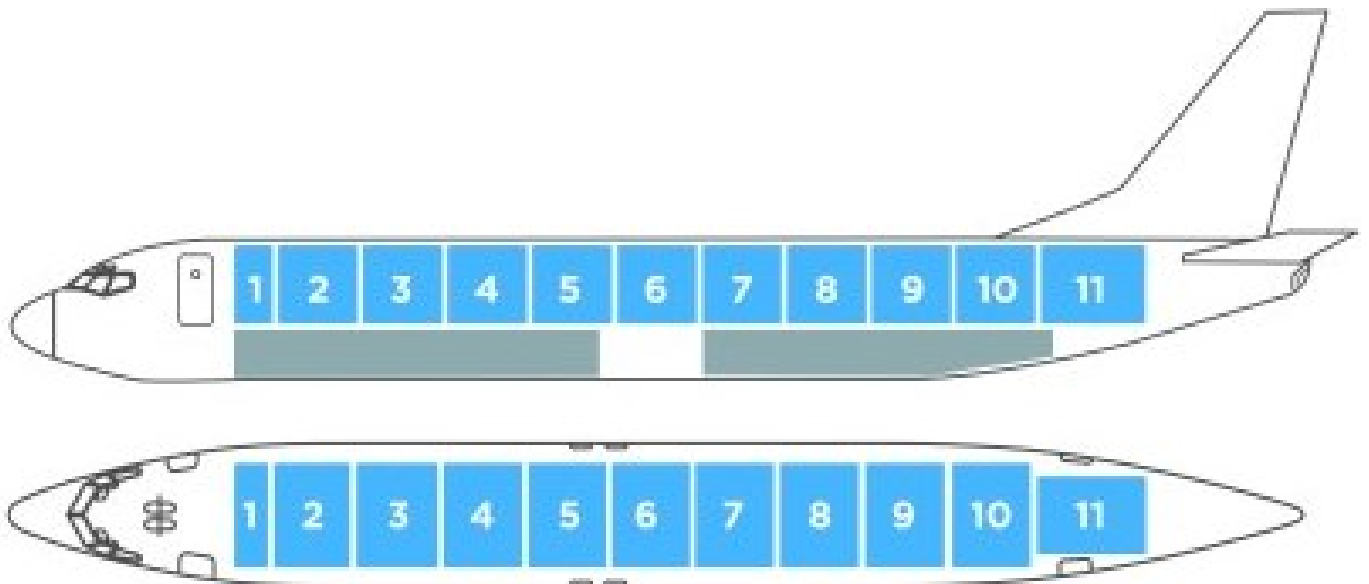
2.4 OPERATIONAL SPECIFICATIONS

INSTRUMENTATION:	STANDARD BOEING 737-400 AVIONICS
RVSM CAPABLE:	YES
SATCOM INSTALLED:	NO
OTHER:	TBD

2.5 FUEL DATA

TOTAL FUEL CAPACITY:	35,583 LB (AT 6.7 LB PER U.S. GALLON)
LONG RANGE TANKS:	N/A

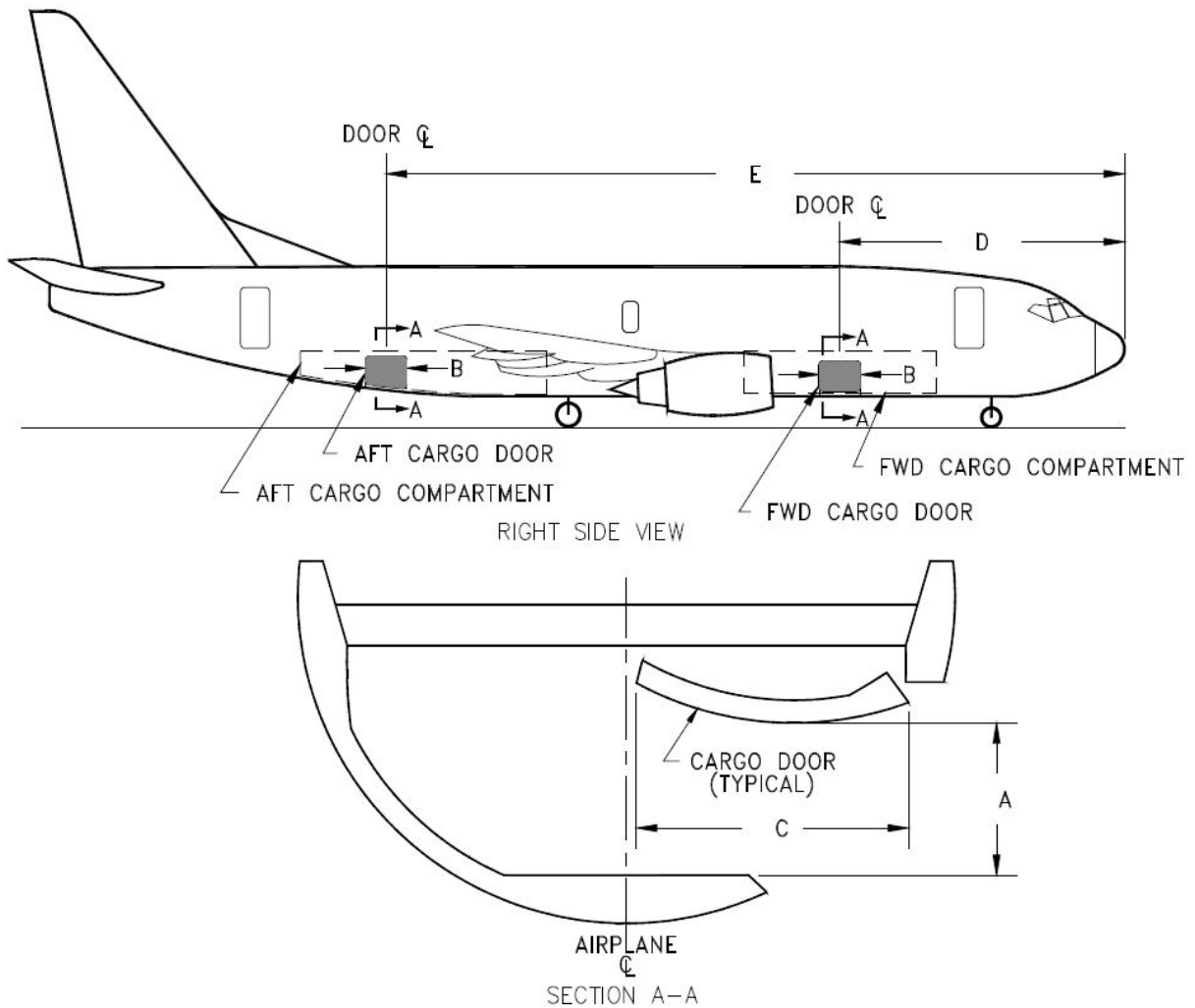
2.6 CONFIGURATION – 11 PALLET POSITIONS



3.0 FREIGHT CAPABILITY

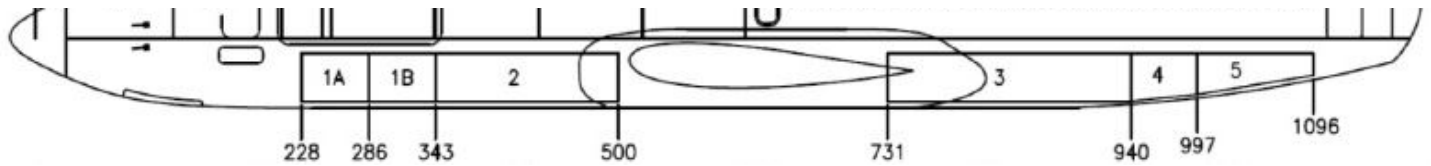
3.1 UNDERFLOOR BAGGAGE DOORS

THE 737-400F HAS TWO UNDERFLOOR BAGGAGE DOORS ON THE LOWER RIGHT SIDE OF THE FUSELAGE.



AIRPLANE MODEL	FORWARD CARGO DOOR			AFT CARGO DOOR		
	DOOR SIZE (C x B)	CLEAR OPENING (A x B)	DISTANCE FROM NOSE TO DOOR CL (D)	DOOR SIZE (C x B)	CLEAR OPENING (A x B)	DISTANCE FROM NOSE TO DOOR CL (E)
737-400	51 x 48 IN (1.30 x 1.22 M)	35 x 48 IN (0.89 x 1.22 M)	28 FT 0.25 IN (8.54 M)	48 x 48 IN (1.22 x 1.22 M)	33 x 48 IN (0.84 x 1.22 M)	82 FT 6.5 IN (25.16 M)

3.2 UNDERFLOOR WEIGHT CAPACITIES



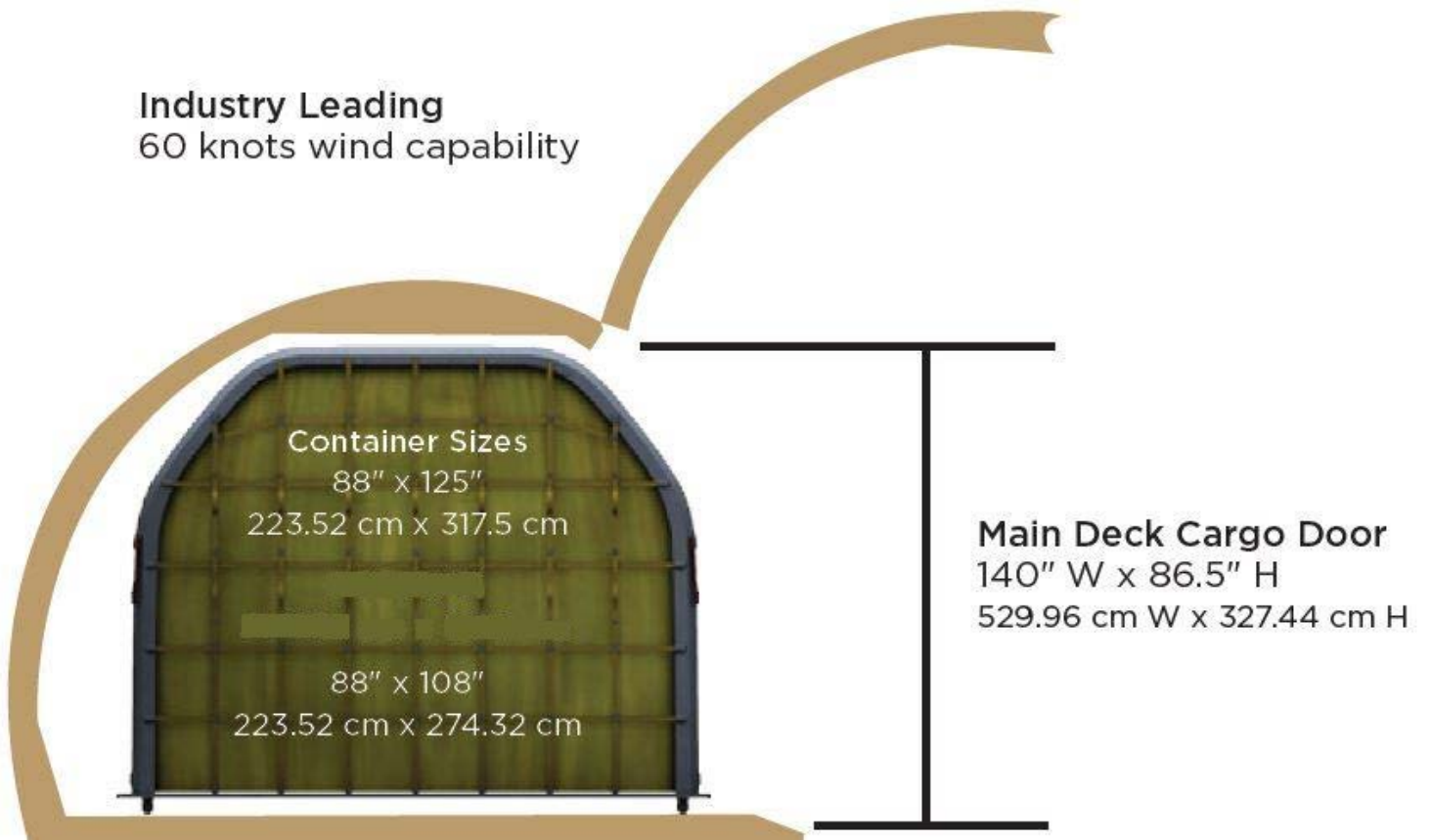
UNDERFLOOR ALLOWABLE BAGGAGE WEIGHTS (Lbs)					
POSITION					
1A	1B	2	3	4	5
1,682	1,065	4,451	6,752	912	1,055

3.3 UPPER-DECK WEIGHT CAPACITIES

1	2	3	4	5	6
Netted Pallet Dimensions					
27"x125"x80" 68.58 cm x 317.5 cm x 203.2 cm	88"x125"x80" 223.52 cm x 317.5 cm x 203 cm	88"x125"x80" 223.52 cm x 317.5 cm x 203 cm	88"x125"x80" 223.52 cm x 317.5 cm x 203 cm	88"x125"x80" 223.52 cm x 317.5 cm x 203 cm	88"x125"x80" 223.52 cm x 317.5 cm x 203 cm
	96"x125"x80" 223.52 cm x 317.5 cm x 203 cm	96"x125"x80" 223.52 cm x 317.5 cm x 203 cm	96"x125"x80" 223.52 cm x 317.5 cm x 203 cm	96"x125"x80" 223.52 cm x 317.5 cm x 203 cm	96"x125"x80" 223.52 cm x 317.5 cm x 203 cm
	88"x108"x80" 223.52 cm x 274.32 cm x 203 cm	88"x108"x80" 223.52 cm x 274.32 cm x 203 cm	88"x108"x80" 223.52 cm x 274.32 cm x 203 cm	88"x108"x80" 223.52 cm x 274.32 cm x 203 cm	88"x108"x80" 223.52 cm x 274.32 cm x 203 cm
Container Dimensions					
27"x125"x80" 68.58 cm x 317.5 cm x 203.2 cm	88"x125"x80" 223.52 cm x 317.5 cm x 203 cm	88"x125"x80" 223.52 cm x 317.5 cm x 203 cm	88"x125"x80" 223.52 cm x 317.5 cm x 203 cm	88"x125"x80" 223.52 cm x 317.5 cm x 203 cm	88"x125"x80" 223.52 cm x 317.5 cm x 203 cm
	96"x125"x80" 223.52 cm x 317.5 cm x 203 cm	96"x125"x80" 223.52 cm x 317.5 cm x 203 cm	96"x125"x80" 223.52 cm x 317.5 cm x 203 cm	96"x125"x80" 223.52 cm x 317.5 cm x 203 cm	96"x125"x80" 223.52 cm x 317.5 cm x 203 cm
	88"x108"x80" 223.52 cm x 274.32 cm x 203 cm	88"x108"x80" 223.52 cm x 274.32 cm x 203 cm	88"x108"x80" 223.52 cm x 274.32 cm x 203 cm	88"x108"x80" 223.52 cm x 274.32 cm x 203 cm	88"x108"x80" 223.52 cm x 274.32 cm x 203 cm
Container Type					
Hazmat or Bulk	AAA AAC AAY	AAA AAC AAY	AAA AAC AAY	AAA AAC AAY	AAA AAC AAY
Position Weight Limit					
Up to 1,000 lbs 453.59 kg	6,000 lbs 2,721.55 kg	6,000 lbs 2,721.55 kg	6,000 lbs 2,721.55 kg	up to 11,000 lbs 4,990 kg Typical 9,200 lbs 4,173 kg	up to 11,000 lbs 4,990 kg Typical 9,200 lbs 4,173 kg

7	8	9	10	11
Netted Pallet Dimensions				
88"x125"x80" 223.52 cm x 317.5 cm x 203 cm	88"x125"x80" 223.52 cm x 317.5 cm x 203 cm	88"x125"x80" 223.52 cm x 317.5 cm x 203 cm	88"x125"x80" 223.52 cm x 317.5 cm x 203 cm	88"x125"x80" 223.52 cm x 317.5 cm x 203 cm
96"x125"x80" 223.52 cm x 317.5 cm x 203 cm	96"x125"x80" 223.52 cm x 317.5 cm x 203 cm	96"x125"x80" 223.52 cm x 317.5 cm x 203 cm	96"x125"x80" 223.52 cm x 317.5 cm x 203 cm	61.5"x60.4"x64" 156.21 cm x 153.42 cm x 162.56 cm
88"x108"x80" 223.52 cm x 274.32 cm x 203 cm	88"x108"x80" 223.52 cm x 274.32 cm x 203 cm	88"x108"x80" 223.52 cm x 274.32 cm x 203 cm	88"x108"x80" 223.52 cm x 274.32 cm x 203 cm	96"x60.4"x64" 243.84 cm x 153.42 cm x 162.56 cm 88"x53"x64" 223.52 cm x 134.62 cm x 162.56 cm 88"x108"x64" 223.52 cm x 274.32 cm x 162.56 cm
Container Dimensions				
88"x125"x80" 223.52 cm x 317.5 cm x 203 cm	88"x125"x80" 223.52 cm x 317.5 cm x 203 cm	88"x125"x80" 223.52 cm x 317.5 cm x 203 cm	88"x125"x80" 223.52 cm x 317.5 cm x 203 cm	88"x125"x76" 223.52 cm x 317.5 cm x 193.04 cm
96"x125"x80" 223.52 cm x 317.5 cm x 203 cm	96"x125"x80" 223.52 cm x 317.5 cm x 203 cm	96"x125"x80" 223.52 cm x 317.5 cm x 203 cm	96"x125"x80" 223.52 cm x 317.5 cm x 203 cm	61.5"x60.4"x64" 156.21 cm x 153.42 cm x 162.56 cm
88"x108"x80" 223.52 cm x 274.32 cm x 203 cm	88"x108"x80" 223.52 cm x 274.32 cm x 203 cm	88"x108"x80" 223.52 cm x 274.32 cm x 203 cm	88"x108"x80" 223.52 cm x 274.32 cm x 203 cm	88"x53"x64" 223.52 cm x 134.62 cm x 162.56 cm 88"x108"x64" 223.52 cm x 274.32 cm x 162.56 cm
Container Type				
AAA AAC AAY	AAA AAC AAY	AAA AAC AAY	AAA AAC AAY	LD3 AAA LD4 AAC AEH AAY Demi AZN
Position Weight Limit				
6,000 lbs 2,721.55 kg	6,000 lbs 2,721.55 kg	6,000 lbs 2,721.55 kg	6,000 lbs 2,721.55 kg	5,000 lbs 2,268 kg

3.4 UPPER-DECK CARGO DOOR



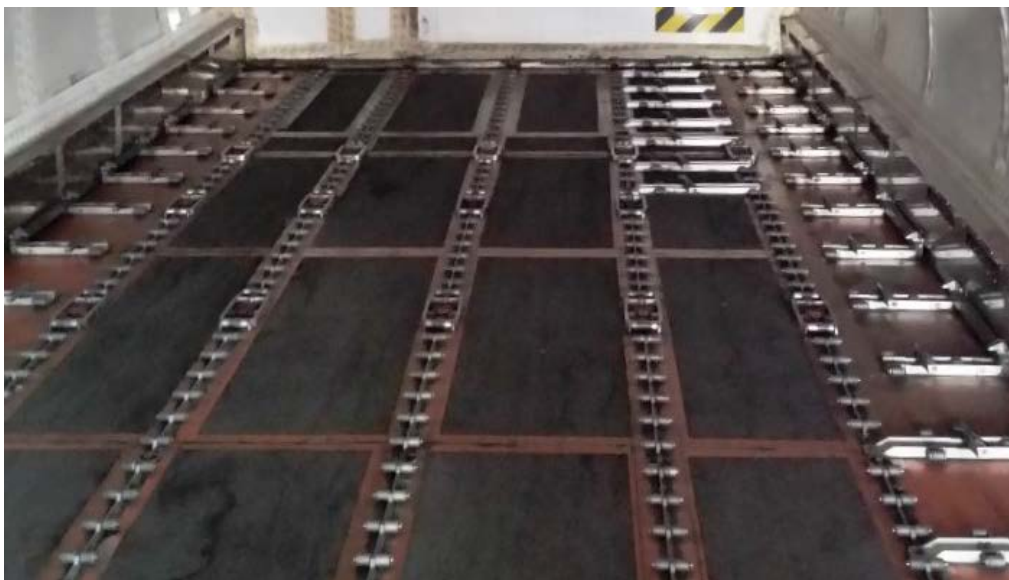
3.4 UPPER-DECK "ANCRA" CARGO LOADING SYSTEM

THE ANCRA CARGO LOADING SYTEM CONSISTS OF A ROLLER-BALL MAT IN THE FORWARD POSITION BY THE CARGO DOOR, FOLLOWED BY SIMPLE ROLLERS IN THE BACK SECTION.

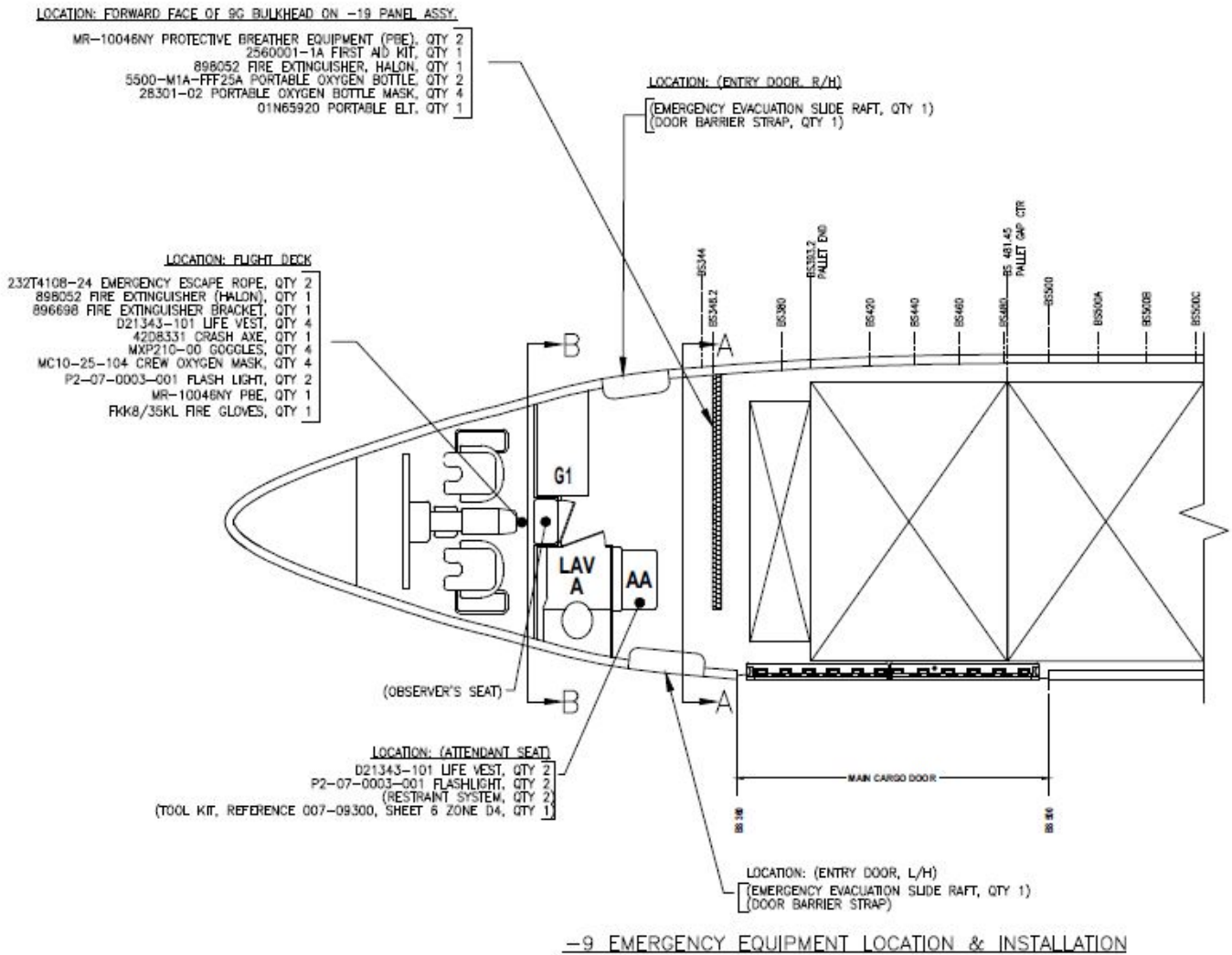
FORWARD ROLLER-BALL MAT



AFT SIMPLE ROLLERS



3.5 FORWARD FUSELAGE AREA



4.0 ENGINE STATUS

4.1 LEFT ENGINE – CFM56-3C1 – 22K LBF

As-At 06-MAY-2019		
SERIAL NUMBER	SINCE NEW	
	HOURS	CYCLES
724563	67,207.9	42,300

LIFE LIMITED COMPONENT	PART NUMBER	SERIAL NUMBER	DISCARD CYCLES	CYCLES SINCE NEW	REMAINING
CFM56-3 FAN MODULE					
FAN BOOSTER SPOOL	335-009-306-0	BC444062	30,000	20,671	9,329
DISK, FAN ROTOR STAGE 1	335-014-511-0	BC523544	24,900	20,671	4,229
CFM56-3 HPC ROTOR (HPCR)					
SHAFT COMPRESSOR ROTOR	1275M37P02	GWN0PDJ1	20,000	8,882	11,118
SEAL, ROTATING AIR, REAR	1319M25P02	GFF5GANN	18,000	8,882	9,118
SPOOL, STAGE 4-9	1588M89G03	GWN0PA8K	20,000	8,882	11,118
SPOOL, STAGE 1 & 2	1590M59P01	XAEW3298	20,000	8,882	11,118
DISK, STAGE 3	2411M21G01	GWN0PDKL	20,000	8,882	11,118
CFM56-3 LPT SHAFT					
SHAFT, LPT	301-330-066-0	DC383135	30,000	20,671	9,329
SHAFT, STUB, LPT	301-330-626-0	DC996744	25,000	20,671	4,329
CFM56-3 6 SUPPORT BEARING					
SHAFT, FAN	335-006-414-0	DD085927	30,000	20,671	9,329
CFM56-3 TURBINE HP					
SEAL, ROTATING AIR, HPT FRONT	1282M72P07	XAEM5607	15,800	8,882	6,918
SHAFT, HPT FRONT	1385M90P04	XAEL9580	17,300	8,882	8,418
DISK, HPT ROTOR	1475M29P03	XAEL4333	18,500	8,882	9,618
SHAFT, HPT REAR	1864M91P02	TMT3BU01	20,000	8,882	11,118
CFM56-3 TURBINE LP					
DISK, LPT ROTOR, STAGE 1	301-331-126-0	BC521767	25,000	20,671	4,329
DISK, LPT ROTOR, STAGE 2	301-331-227-0	BC533817	25,000	20,671	4,329
DISK LPT ROTOR, STAGE 3	301-331-322-0	BC521800	25,000	20,671	4,329
DISK LPT ROTOR, STAGE 4	301-331-429-0	BC463513	25,000	20,671	4,329
SUPPORT, CONICAL LPT	305-056-116-0	DC903367	25,000	20,671	4,329

4.2 RIGHT ENGINE – CFM56-3C1 – 22K LBF

As-At 06-May-19		
SERIAL NUMBER	SINCE NEW	
	HOURS	CYCLES
860139	50,907.5	29,204

LIFE LIMITED COMPONENT	PART NUMBER	SERIAL NUMBER	DISCARD CYCLES	CYCLES SINCE NEW	REMAINING
CFM56-3 FAN ROTOR					
FAN DISK	335-014-511-0	DD334172	24,900	14,779	10,121
FAN BOOSTER SPOOL	335-009-306-0	R007773	30,000	25,730	4,270
FAN SHAFT	335-006-414-0	DD086237	30,000	17,286	12,714
CFM56-3 HPC ROTOR (HPCR)					
HPCR FRONT SHAFT	1275M37P02	GWN0A4FJ	20,000	14,926	5,074
STAGE 1-2 SPOOL	1589M66G02	GWN0AGEK	20,000	17,286	2,714
STAGE 3 DISK	1590M59P01	XAEG0675	20,000	17,286	2,714
STAGE 4 -9 SPOOL	1590M29G01	GWNYD606	20,000	14,441	3,842
CDP REAR AIR SEAL	1319M25P02	GFF5C1R9	18,000	13,302	6,698
CFM56-3 HIGH PRESSURE TURBINE ROTOR (HPTR)					
HPTR FRONT SHAFT	1385M90P04	XAE35112	17,300	14,820	5,180
HPTR FRONT AIR SEAL	1282M72P05	GWN040H8	15,800	12,293	3,965
HPTR DISK	1475M29P02	GWBG486	18,500	13,252	4,226
HPTR REAR SHAFT	1864M91P02	TMT2B014	20,000	17,286	2,714
CFM56-3 LOW PRESSURE TURBINE ROTOR (LPTR)					
LPTR STAGE 1 DISK	301-331-126-0	BC579586	25,000	17,286	7,714
LPTR STAGE 2 DISK	301-331-227-0	BCS76166	25,000	17,286	7,714
LPTR STAGE 3 DISK	301-331-322-0	BC598624	25,000	17,286	7,714
LPTR STAGE 4 DISK	301-331-429-0	BC500973	25,000	17,286	7,714
LPTR SHAFT	301-330-067-0	F002264	30,000	26,426	3,574
LPTR STUB SHAFT	301-330-626-0	DC997046	25,000	17,286	7,714
CONICAL SUPPORT	305-056-116-0	DD086148	25,000	17,286	7,714

5.0 APU STATUS

As-At 06-MAY-2019	
MANUFACTURER:	HONEYWELL AEROSPACE
MODEL:	GTCP85-129J
SERIAL NUMBER:	P-35243C
TOTAL HOURS:	42,461.0 APU HOURS
TOTAL CYCLES:	64,574 APU CYCLES
HOURS SINCE REPAIR:	30.0 APU HOURS
CYCLES SINCE REPAIR:	30 APU CYCLES

6.0 LANDING GEAR

As-At 06-MAY-2019										
DESCRIPTION	PART NO.	SERIAL NO.	OHAUL CYC	CYCLES		DATE OF MFR OR OHAUL	REMAINING TO OHAUL		CYC REMAIN TO DISCARD	DUE DATE
				SINCE NEW	SINCE OHAUL		CYCLES	DAYS		
NOSE LANDING GEAR										
NLG ASSEMBLY – DRESSED	65-73762-25	XC91618	17,930	47,514	2,458		15,472			01-Jul-2026
LH LANDING GEAR										
MAIN LANDING GEAR ASSY- DRESSED	65-73761-121	MC06097P3050	17,930	34,920	2,458		15,472			01-Jul-2026
RH LANDING GEAR										
MAIN LANDING GEAR ASSY- DRESSED	65-73761-120	MC04652P2356	17,930	45,594	2,458		15,472			01-Jul-2026

NOTE: ESTIMATED, UN-AUDITED DATA.

7.0 MAINTENANCE STATUS

THE FOLLOWING MAINTENANCE HAS BEEN PERFORMED ON THE AIRCRAFT:

- 1) C-CHECK
- 2) LAP JOINT MOD
- 3) SCRIBELINES
- 4) AD COMPLIANCE
- 5) PEMCO FULL FREIGHTER CONVERSION

8.0 AVIONICS

(*ONLY = ONLY ONE REQUIRED; ITEM INSTALLED)

AVIONICS				
EQUIPMENT	POSITION*	MANUFACTURER/MODEL	PART No.	SERIAL No.
AUTOPILOT – DFCS	1	HONEYWELL	4051600-914	--
AUTOPILOT – DFCS	2	HONEYWELL	4051600-914	--
AUTO THROTTLE	ONLY	SMITHS	755SUE2-4	--
ALTITUDE ALERT	ONLY	HONEYWELL	PART OF AFCS	--
MODE CONTROL PANEL	ONLY	HONEYWELL	4082260-939	
BOARDING MUSIC SYSTEM & PRAM	ONLY	MATSUSHITA	RDAX7308-01	--
FLIGHT DATA RECORDER	ONLY	L3 COMMUNICATIONS	S800-2000-00	--
COCKPIT VOICE RECORDER	ONLY	L3 COMMUNICATIONS	2100-1025-22	--
DIGITAL FLIGHT DATA ACQUISITION	ONLY	SAGEM	ED47B109	--
EMERGENCY LOCATOR TRANSMITTER	ONLY	EADS	01N65920	--
UNDERWATER LOCATOR BEACON	1	DUKANE	DK120	--
UNDERWATER LOCATOR BEACON	2	DUKANE	DK120	--
VHF COM	1	COLLINS (VHF-700)	622-5219-004	--
VHF COM	2	COLLINS (VHF-700)	622-5219-004	--
VHF COM	3	COLLINS (VHF-700)	622-5219-004	--
SELCAL	ONLY	AVTECH	NA138-714B	--
COMM CONTROL PANEL	1	COLLINS (VFP-712)	622-6831-021	--
COMM CONTROL PANEL	2	COLLINS (VFP-712)	622-6831-021	--
INTERCOM	1	AVTECH	5145-1-60	--
INTERCOM	2	AVTECH	5145-1-60	--
INTERCOM	3	AVTECH	5145-1-60	--
PUBLIC ADDRESS	ONLY	COLLINS	622-4096-001	--
CMU-ACARS MGMT UNIT	ONLY	COLLINS	822-1239-101	--
AIR DATA COMPUTER	1	HONEYWELL	HG480E1	--
AIR DATA COMPUTER	2	HONEYWELL	4061100-901	--
ALTIMETER	1	SMITHS	2057-01-1	--
ALTIMETER	2	SMITHS	2057-01-1	--
MACH/AIRSPEED INDICATOR	1	SMITHS	2083-11-1	--
MACH/AIRSPEED INDICATOR	2	SMITHS	2083-11-1	--
VSI	1	HONEYWELL	4039893-903	--
VSI	2	HONEYWELL	4039893-903	--
EFIS CONTROL PANEL	1	COLLINS	622-8001-350	--
EFIS CONTROL PANEL	2	COLLINS	622-2001-350	--

AVIONICS				
EQUIPMENT	POSITION*	MANUFACTURER/MODEL	PART NO.	SERIAL No.
EFIS SYMBOL GENERATOR	1	COLLINS	622-9436-101	--
EFIS SYMBOL GENERATOR	2	COLLINS	622-9436-101	--
EADI	1	COLLINS	622-7998-013	--
EADI	2	COLLINS	622-7998-003	--
EHSI	1	COLLINS	622-7999-013	--
EHSI	2	COLLINS	622-7999-013	--
IRS	1	HONEYWELL	HG1050AD11	--
IRS	2	HONEYWELL	HG1050AE11	--
VOR/ILS NAV SYSTEM	1	COLLINS (51RV-4B)	622-3257-001	--
VOR/ILS NAV SYSTEM	2	COLLINS (51RV-4B)	622-3257-001	--
VHF NAV CONTROL PANEL	1	GABLES	G6773-04	--
VHF NAV CONTROL PANEL	2	GABLES	G6773-04	--
MARKER RECEIVER	ONLY	COLLINS (51Z-4)	522-2996-011	--
GPWS/WINDSHEAR (EGPWS)	ONLY	HONEYWELL	965-0976-003-236-236	--
DME	1	COLLINS (860E-5)	622-2921-006	--
DME	2	COLLINS (860E-5)	622-2921-006	--
ADF	1	COLLINS (51V-7)	777-1492-005	--
ADF	2	COLLINS (51V-7)	777-1492-005	--
RADIO ALTIMETER	1	COLLINS	622-3890-021	--
RADIO ALTIMETER	2	COLLINS	622-3890-021	--
ATC TRANSPONDER (MODE-S)	1	ACSS	4061400-905	--
ATC TRANSPONDER (MODE-S)	2	ACSS	4061400-905	--
TCAS	ONLY	ACSS	4066010-914	--
WEATHER RADAR	ONLY	COLLINS (WRT-701X)	622-5132-106	--
GPS	1	HONEYWELL	HG2021GC01	--
GPS	2	HONEYWELL	HG2021GC01	--
FLIGHT MANAGEMENT COMPUTER	1	SMITHS (GE)	171497-05-01	--
FLIGHT MANAGEMENT COMPUTER	2	SMITHS (GE)	171497-05-01	--

9.0 PHOTOGRAPHS



