

AIRCRAFT SPECIFICATION



November 1 2019

Model: Boeing 737-800

Date Of Manufacture: 09-Jun-2007

1. AIRCRAFT FEATURES LIST

AIRCRAFT FEATURES LIST		
SR. NO.	Description	Value
1	8.33 kHz Channel Spacing	Yes
2	ADS-B In	No
3	ADS-B Out	No
4	ATC Mode S ELS/EHS	Yes
5	Cabin Configuration	8C/162Y
6	CDVSS	Yes
7	FANS B+ (LINK2000+CPDLC/ATN/VDL Mode 2)	No
8	FM Immunity	Yes
9	Galleys	G1, G2, G4B
10	Lavatories	LA, LD, LE
11	Regulatory compliance	FAA/EASA
12	Reinforced Cockpit Door	Yes
13	TCAS II Version 7.1	Yes

2. PRINCIPAL OPERATING WEIGHTS

PRINCIPAL OPERATING WEIGHTS	
Maximum Taxi Weight	76203.00 kg
Maximum Take-Off Weight	75976.00 kg
Maximum Zero Fuel Weight	62731.00 kg
Maximum Landing Weight	66360.00 kg
Maximum Gross Payload	21000.00 kg

3. AIRFRAME STATUS

AIRFRAME STATUS	
Total Airframe Hours Since New	33431:25
Total Airframe Cycles Since New	22188
Total Airframe Landings Since New	
Hours To Landing Ratio	0.00 to 1
Time Since Last Major Overhaul (D Check)	
Last Major Inspection Accomplished (C+12Y)	28.06.2019
Next Major Inspection (C Check)	28.06.2021
Time Since Major Inspection (C check)	126 dys

4. AIRFRAME MAINTENANCE PROGRAM

AIRFRAME MAINTENANCE PROGRAM				
CHECK	INTERVAL	LAST ACCOMPLISHED	CURRENT INFO	REMAINING FH / DAYS
Daily Check	99999:00 H	32941:03 H	33431:25 H	99508:38 H
Aircraft Weighing	48 Mt	30-Aug-2017		668 Dy
Weekly Check	7 Dy	01-Nov-2019		7 Dy

7. ADDITIONAL STRUCTURAL INSPECTIONS

ADDITIONAL STRUCTURAL INSPECTIONS

Program Type

Based on manufacturer's MPD (MSG3).

8. INSTALLED ENGINES

INSTALLED ENGINES

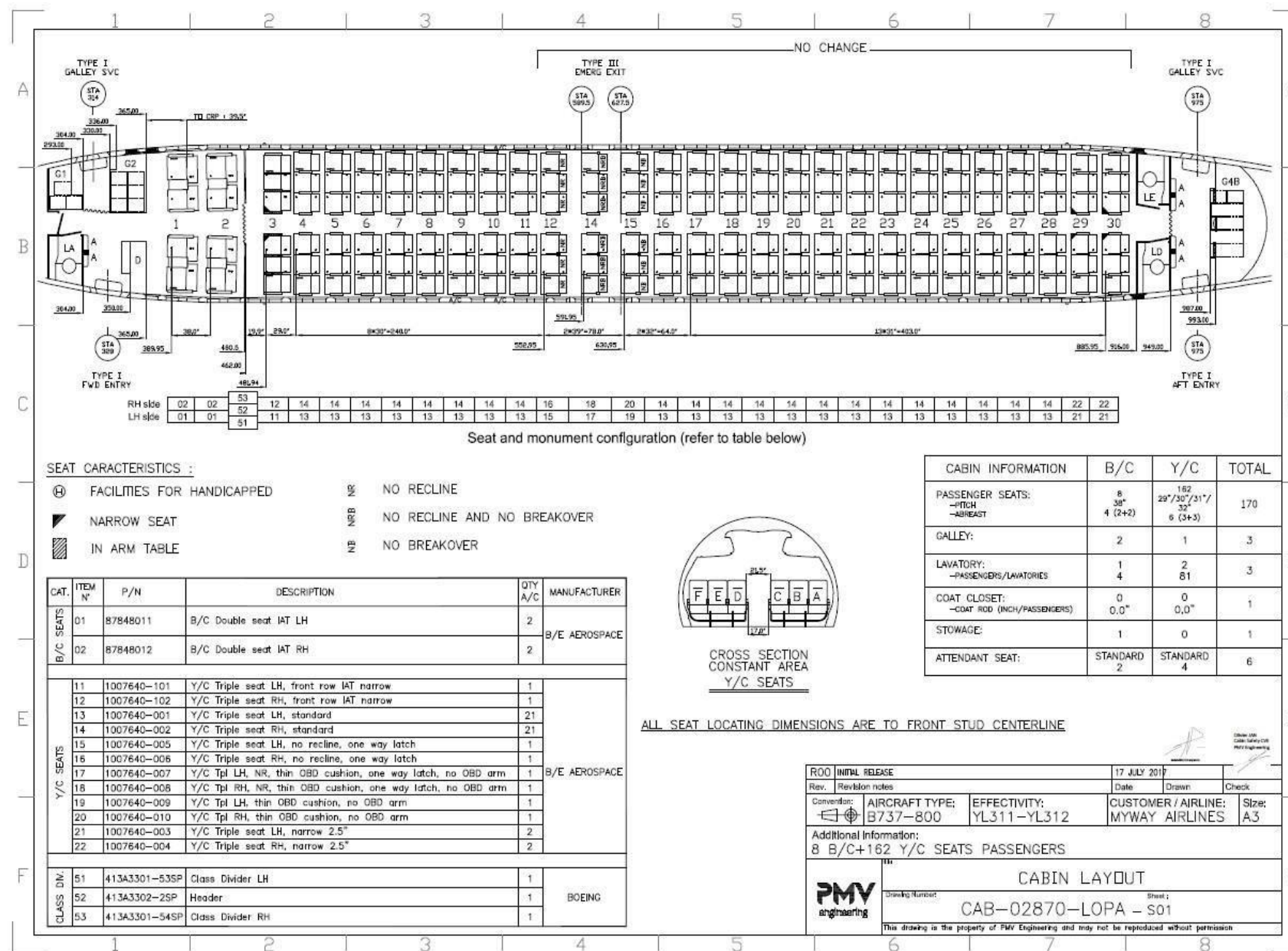
Engine Manufacturer CFMI					
Engine Type and Model CFM56-7B					
Engine Position	Serial No.	Engine Hours Since New	Engine Cycles Since New	Installation Date	Remaining Cycles
LH	On file	33064:42	20118	19-Mar-2017	4882
RH	On file	32415:23	20302	16-May-2017	4698

9. APU

AUXILLARY POWER UNIT	
Manufacturer	HONEYWELL
Type and Model	131-9B
Serial Number	On
Hours Since New	22204:11
Date of last Shop Visit	28-Apr-2017
APU Overhaul Facility	N/A

10. LANDING GEAR

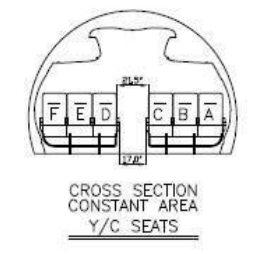
LANDING GEAR						
Model	Date Of Last Overhaul	Next Overhaul	Frequency	Current Values	Elapsed Values	Remaining Values
161A1100-39	15-May-2015	38988 C 12-May-2025	21000 C 3650 Dy	22142 C 01-Nov-2019	4154 C 1631 Dy	16846 C 2019 Dy
161A1100-40	15-May-2015	38988 C 12-May-2025	21000 C 3650 Dy	22142 C 01-Nov-2019	4154 C 1631 Dy	16846 C 2019 Dy
162A1100-11	15-May-2015	35988 C 12-May-2025	18000 C 3650 Dy	22142 C 01-Nov-2019	4154 C 1631 Dy	13846 C 2019 Dy



SEAT CHARACTERISTICS :

- FACILITIES FOR HANDICAPPED
- NARROW SEAT
- IN ARM TABLE
- NO RECLINE
- NO RECLINE AND NO BREAKOVER
- NO BREAKOVER

CAT	ITEM N°	P/N	DESCRIPTION	QTY A/C	MANUFACTURER
B/C SEATS	01	87848011	B/C Double seat IAT LH	2	B/E AEROSPACE
	02	87848012	B/C Double seat IAT RH	2	
Y/C SEATS	11	1007640-101	Y/C Triple seat LH, front row IAT narrow	1	B/E AEROSPACE
	12	1007640-102	Y/C Triple seat RH, front row IAT narrow	1	
	13	1007640-001	Y/C Triple seat LH, standard	21	
	14	1007640-002	Y/C Triple seat RH, standard	21	
	15	1007640-005	Y/C Triple seat LH, no recline, one way latch	1	
	16	1007640-006	Y/C Triple seat RH, no recline, one way latch	1	
	17	1007640-007	Y/C Tpl LH, NR, thin OBD cushion, one way latch, no OBD arm	1	
	18	1007640-008	Y/C Tpl RH, NR, thin OBD cushion, one way latch, no OBD arm	1	
	19	1007640-009	Y/C Tpl LH, thin OBD cushion, no OBD arm	1	
	20	1007640-010	Y/C Tpl RH, thin OBD cushion, no OBD arm	1	
CLASS DIV	51	413A3301-53SP	Class Divider LH	1	BOEING
	52	413A3302-26P	Header	1	
53	413A3301-54SP	Class Divider RH	1		



CABIN INFORMATION	B/C	Y/C	TOTAL
PASSENGER SEATS:			
-PTCH	8	162	170
-HEAD	4 (2x2)	8 (3x2)	
GALLEY:	2	1	3
LAVATORY:	1	2	3
-PASSENGERS/LAVATORIES	4	81	
COAT CLOSET:	0	0	1
-COAT ROD (INCH/PASSENGERS)	0.0"	0.0"	
STOWAGE:	1	0	1
ATTENDANT SEAT:	STANDARD 2	STANDARD 4	6

ALL SEAT LOCATING DIMENSIONS ARE TO FRONT STUD CENTERLINE

Rev.	Revision notes	Date	Drawn	Check
1	INITIAL RELEASE	17 JULY 2011		

Conversion: AIRCRAFT TYPE: B737-800 EFFECTIVITY: YL311-YL312 CUSTOMER / AIRLINE: MYWAY AIRLINES Size: A3

Additional Information:
8 B/C+162 Y/C SEATS PASSENGERS

PMV engineering
CABIN LAYOUT
CAB-02870-LOPA - S01

This drawing is the property of PMV Engineering and may not be reproduced without permission