

| | |
|---------------------------|----------------|
| ENGINE MODEL: | PW4056-3 |
| ENGINE S/N: | P733715 |
| TSN: | 47,418 |
| CSN: | 7,810 |
| TSLSV: | 12,548 |
| CSLSV: | 2,338 |
| LAST THRUST RATE SETTING: | PW4460-3 |
| AS OF DATE: | 06-Jan-20 |
| LAST OPERATOR: | SKYLEASE CARGO |

LIFE LIMITED PART STATUS

| IIN | DESCRIPTION | P/N | S/N | SINCE NEW | | CYCLE USAGE | | | OEM CYCLE LIMIT | | | REMAINING | | |
|-------------------------|--|-----------|------------|-----------|--------|-------------|---|-------------|-----------------|---|-------------|-------------|---|-------------|
| | | | | HOURS | CYCLES | 4052 / 4056 | 4060 / 4062 4156 / 4158 4164 / 4168 | 4460 / 4462 | 4052 / 4056 | 4060 / 4062 4156 / 4158 4164 / 4168 | 4460 / 4462 | 4052 / 4056 | 4060 / 4062 4156 / 4158 4164 / 4168 | 4460 / 4462 |
| FAN ROTOR MODULE | | | | | | | | | | | | | | |
| A0032 | HUB, FRONT COMPRESSOR | 50B321 | CBDUAY4347 | 47,418 | 7,810 | 0 | 0 | 7,810 | 20,000 | 15,000 | 15,000 | 9,586 | 7,190 | 7,190 |
| A0033 | DISK, DRUM ROTOR, 1.6 - 4 | 50B422 | CBDUAY2231 | 47,418 | 7,810 | 0 | 0 | 7,810 | 20,000 | 15,000 | 15,000 | 9,586 | 7,190 | 7,190 |
| A0034 | DISK, STAGE 1.6 | 51B816 | CBDUAX0186 | 47,418 | 7,810 | 0 | 0 | 7,810 | 20,000 | 15,000 | 15,000 | 9,586 | 7,190 | 7,190 |
| A0035 | DISK, STAGE 2 | 50B302 | CBDUAW3038 | 47,418 | 7,810 | 0 | 0 | 7,810 | 20,000 | 15,000 | 15,000 | 9,586 | 7,190 | 7,190 |
| A0036 | DISK, STAGE 3 | 50B403 | CBDUAX0771 | 47,418 | 7,810 | 0 | 0 | 7,810 | 20,000 | 15,000 | 15,000 | 9,586 | 7,190 | 7,190 |
| A0037 | DISK, STAGE 4 | 50B404 | CBDUAX0855 | 47,418 | 7,810 | 0 | 0 | 7,810 | 20,000 | 15,000 | 15,000 | 9,586 | 7,190 | 7,190 |
| LPC/LPT COUPLING | | | | | | | | | | | | | | |
| 0070 | TURBINE SHAFT (LPC/LPT) COUPLING | 50A210 | CLPXA0392 | 47,418 | 7,810 | 0 | 0 | 7,810 | 30,000 | 30,000 | 30,000 | 22,190 | 22,190 | 22,190 |
| HPC ROTOR MODULE | | | | | | | | | | | | | | |
| B0183 | HUB, HPC FRONT | 51H572 | CENCAJ9268 | 47,418 | 7,810 | 0 | 0 | 7,810 | 20,000 | 15,000 | 15,000 | 9,586 | 7,190 | 7,190 |
| B0181 | HPC DISK, STAGE 5 | 56H705 | CENCAM9264 | 47,418 | 7,810 | 0 | 0 | 7,810 | 20,000 | 15,000 | 15,000 | 9,586 | 7,190 | 7,190 |
| B0184 | HPC DISK, DRUM ROTOR, 6 - 12 | 55H106-01 | CENCAS295 | 47,418 | 7,810 | 0 | 0 | 7,810 | 20,000 | 15,000 | 15,000 | 9,586 | 7,190 | 7,190 |
| B0185 | HPC DISK, STAGE 6 | 53H976-02 | CENCAS2247 | 47,418 | 7,810 | 0 | 0 | 7,810 | 20,000 | 15,000 | 15,000 | 9,586 | 7,190 | 7,190 |
| B0186 | HPC DISK, STAGE 7 | 54H816-02 | CENCAS0596 | 47,418 | 7,810 | 0 | 0 | 7,810 | 20,000 | 15,000 | 15,000 | 9,586 | 7,190 | 7,190 |
| B0187 | HPC DISK, STAGE 8 | 54H816-03 | CENCAS2226 | 47,418 | 7,810 | 0 | 0 | 7,810 | 20,000 | 15,000 | 15,000 | 9,586 | 7,190 | 7,190 |
| B0188 | HPC DISK, STAGE 9 | 54H816-04 | CENCAS5417 | 47,418 | 7,810 | 0 | 0 | 7,810 | 20,000 | 15,000 | 15,000 | 9,586 | 7,190 | 7,190 |
| B0189 | HPC DISK, STAGE 10 | 53H976-06 | CENCAS3732 | 47,418 | 7,810 | 0 | 0 | 7,810 | 20,000 | 15,000 | 15,000 | 9,586 | 7,190 | 7,190 |
| B0190 | HPC DISK, STAGE 11 | 54H626-02 | CENCAR9966 | 47,418 | 7,810 | 0 | 0 | 7,810 | 20,000 | 15,000 | 15,000 | 9,586 | 7,190 | 7,190 |
| B0191 | HPC DISK, STAGE 12 | 55H106-02 | CENCAS3543 | 47,418 | 7,810 | 0 | 0 | 7,810 | 20,000 | 15,000 | 15,000 | 9,586 | 7,190 | 7,190 |
| B0193 | HPC DISK, DRUM ROTOR, 13 TO 15 AND HPC DRIVE SHAFT | 56H013-01 | CENCAS4119 | 47,418 | 7,810 | 0 | 0 | 7,810 | 20,000 | 15,000 | 15,000 | 9,586 | 7,190 | 7,190 |
| B0194 | HPC DISK, STAGE 13 | 56H013-02 | CENCAS1668 | 47,418 | 7,810 | 0 | 0 | 7,810 | 20,000 | 15,000 | 15,000 | 9,586 | 7,190 | 7,190 |
| B0195 | HPC DISK, STAGE 14 | 56H013-03 | CENCAR8249 | 47,418 | 7,810 | 0 | 0 | 7,810 | 20,000 | 15,000 | 15,000 | 9,586 | 7,190 | 7,190 |
| B0196 | HPC DISK, STAGE 15 | 56H013-04 | CENCAS2058 | 47,418 | 7,810 | 0 | 0 | 7,810 | 20,000 | 15,000 | 15,000 | 9,586 | 7,190 | 7,190 |
| B0198 | HPC REAR HUB (STAGE 15) | 54H803-02 | CENCAS2526 | 47,418 | 7,810 | 0 | 0 | 7,810 | 20,000 | 15,000 | 15,000 | 9,586 | 7,190 | 7,190 |
| B0197 | HPC DRIVE SHAFT | 54H767 | CENCAR4236 | 47,418 | 7,810 | 0 | 0 | 7,810 | 20,000 | 15,000 | 15,000 | 9,586 | 7,190 | 7,190 |
| B0201 | HPC AIRSEAL, DIFFUSER | 54H792 | CENCAM6208 | 55,110 | 8,383 | 0 | 0 | 8,383 | 20,000 | 15,000 | 15,000 | 8,822 | 6,617 | 6,617 |
| HPT ROTOR MODULE | | | | | | | | | | | | | | |
| C0402 | HUB, TURBINE FRONT (STAGE 1) | 52L301 | CKLBB82409 | 47,418 | 7,810 | 0 | 0 | 7,810 | 20,000 | 15,000 | 15,000 | 9,586 | 7,190 | 7,190 |
| C0420 | HUB, TURBINE INTER, REAR (STAGE 2) | 53L602 | CKLBCB0506 | 47,418 | 7,810 | 0 | 0 | 7,810 | 20,000 | 15,000 | 15,000 | 9,586 | 7,190 | 7,190 |
| C0403 | AIRSEAL, HPT STAGE 1 | 50L879 | CKLBBN2610 | 47,418 | 7,810 | 0 | 0 | 7,810 | 18,900 | 13,900 | 13,900 | 8,280 | 6,090 | 6,090 |
| C0423 | PLATE, HPT STAGE 2 BLADE RETAINING | 50L242 | CKLBS4851 | 47,418 | 7,810 | 0 | 0 | 7,810 | 20,000 | 15,000 | 15,000 | 9,586 | 7,190 | 7,190 |
| C0408 | AIRSEAL, HPT STAGE 2 | 53L030 | CKLBD80932 | 32,992 | 5,288 | 0 | 0 | 5,288 | 15,900 | 13,800 | 13,800 | 9,807 | 8,512 | 8,512 |
| C0410 | AIRSEAL, HPT STAGE 1 (INNER) | 50L664 | CKLBCG2185 | 46,786 | 7,994 | 0 | 0 | 7,994 | 16,800 | 14,800 | 14,800 | 7,725 | 6,806 | 6,806 |
| LPT ROTOR MODULE | | | | | | | | | | | | | | |
| D0474 | DISK, LPT STAGE 3 | 50N803 | CLDLA62618 | 47,418 | 7,810 | 0 | 0 | 7,810 | 20,000 | 15,000 | 15,000 | 9,586 | 7,190 | 7,190 |
| D0480 | DISK, LPT STAGE 4 | 50N924 | CLDLBD8441 | 47,418 | 7,810 | 0 | 0 | 7,810 | 20,000 | 15,000 | 15,000 | 9,586 | 7,190 | 7,190 |
| D0489 | HUB, REAR TURBINE STAGE 5 | 51N505 | CLDLBE5906 | 47,418 | 7,810 | 0 | 0 | 7,810 | 20,000 | 15,000 | 15,000 | 9,586 | 7,190 | 7,190 |
| D0472 | AIRSEAL, LPT STAGE 3 | 50N521 | CLDLA95216 | 47,418 | 7,810 | 0 | 0 | 7,810 | 20,000 | 15,000 | 15,000 | 9,586 | 7,190 | 7,190 |
| D0479 | AIRSEAL, LPT STAGE 4 | 51N038 | CLDLCX3756 | 29,312 | 5,322 | 0 | 0 | 5,322 | 10,900 | 10,900 | 15,000 | 7,032 | 7,032 | 9,678 |
| D0488 | AIRSEAL, LPT STAGE 5 | 50N419 | CLDLA49734 | 47,418 | 7,810 | 0 | 0 | 7,810 | 20,000 | 15,000 | 15,000 | 9,586 | 7,190 | 7,190 |
| 0432 | FRONT COMP. DRIVE TURB. (LPT) SHAFT | 50A077 | CLDLAS8597 | 47,418 | 7,810 | 0 | 0 | 7,810 | 30,000 | 30,000 | 30,000 | 22,190 | 22,190 | 22,190 |
| 0434 | AIRSEAL, LPT STAGE 3 | 50N412 | CLDLAK4015 | 47,418 | 7,810 | 0 | 0 | 7,810 | 20,000 | 15,000 | 15,000 | 9,586 | 7,190 | 7,190 |


* SEE ASB PWENG-A72-812

Misc Cycle Usage PW4060/4062/4156/4158/4164/4168, see LLP BTB Trace for details

FIRST LIMITER: 7,032 6,090 6,090

THE INFORMATION CONTAINED HEREIN HAS BEEN OBTAINED FROM SOURCES (PREVIOUS OWNERS, OPERATORS AND/OR REPAIR AGENCIES), WHICH WE BELIEVE TO BE RELIABLE. THE INSTALLER OF THESE PARTS HAS THE ULTIMATE RESPONSIBILITY FOR USE OF THIS INFORMATION.

DATE: May 8, 2020

| | | | | | | | | |
|--|--------|--|---|---|--|--|---|--|
| 1. Approving Civil Aviation Authority/Country: FAA/United States | | 2. AUTHORIZED RELEASE CERTIFICATE FAA Form 8130-3, AIRWORTHINESS APPROVAL TAG | | | 3. Form Tracking Number: 1600 | |  | |
| 4. Organization Name and Address: | | | | | 5. Work Order/Contract/Invoice Number: S20002 | | | |
| 6. Item: | | 7. Description: | | | | | 11. Status/Work: | |
| 1 | ENGINE | PW4460-3 | 1 | 733715 | REPAIRED | | | |
| 12. Remarks: <p>A complete description of work performed is on file at the above referenced organization under the work order and system tracking reference number indicated in blocks 3 and 5. Pratt &Whitney Engine with serial No. 733715 was repaired per Pratt &Whitney Engine Shop Manual (ESM) Rev # 91 dated 15-JAN-2019.</p> <p>Engine received a limited scope of work as follows:</p> <ol style="list-style-type: none"> 1. Performed engine preservation method II in reference with 71-00-00 of the cited manual 2. Performed Borescope inspection in reference with MD 11 AMM chapter 72-00-00. 3. Accomplished C-check task cards per customer instructions. <p style="margin-top: 20px;">NOTE: OPERATOR TO ACCOMPLISH ALL AMM TASKS ASSOCIATED WITH THE MAINTENANCE ACCOMPLISHED INCLUDING TASKS LISTED IN ATOPS CARRY FORWARD ITEMS FORM QC-114 PRIOR TO ENGINE C</p> <p style="margin-top: 20px;">NOTE: ENGINE TOTAL TIME AND CYCLES FURNISHED BY CUSTOMER TOTAL TIME: 47417.44 TOTAL CYCLES: 7810</p> <p style="font-size: small; margin-top: 10px;">*AeroTech Ops certifies that the work specified in Blocks 11 and 12 was performed in accordance with EASA Implementation Rule Part-145 Approval, and with respect to that work, the aircraft component is considered ready for release to service under EASA approval number 145.6642*</p> | | | | | | | | |
| 13a. Certifies the items identified above were manufactured in conformity to: Approved design data and are in a condition for safe operation. Non-approved design data specified in Block 12. | | 14a. <input checked="" type="checkbox"/> 14 CFR 43.9 Return to Service Certifies that unless otherwise specified in Block 12, the work identified in Block 11 and described in Block 12 was accomplished in accordance with Title 14, Code of Federal Regulations, part 43 and in respect to that work, the items are approved for return to service. | | 14b. Other regulation specified in Block 12 | | | | |
| 13b. Authorized Signature: | | 13c. Approval/Authorization No.: | | 14b. Authorized Signature:  | | 14c. Approval/Certificate No.: 9EZR432C | | |
| 13d. Name (Typed or Printed): | | 13e. Date (dd/mmm/yyyy): | | 14d. Name (Typed or Printed): RICARDO PEREZ | | 14e. Date (dd/mmm/yyyy): 30-JAN-2020 | | |
| User/Installer Responsibilities | | | | | | | | |
| <p>It is important to understand that the existence of this document alone does not automatically constitute authority to install the aircraft engine/propeller/article.</p> <p>Where the user/installer performs work in accordance with the national regulations of an airworthiness authority different than the airworthiness authority of the country specified in Block 1, it is essential that the user/installer ensures that his/her airworthiness authority accepts aircraft engine(s)/propeller(s)/article(s) from the airworthiness authority of the country specified in Block 1.</p> <p>Statements in Blocks 13a and 14a do not constitute installation certification. In all cases, aircraft maintenance records must contain an installation certification issued in accordance with the national regulations by the user/installer before the aircraft may be flown.</p> | | | | | | | | |

ENGINE STATUS PW4462-3 733715 ON LOG

| ENGINE DATA | | | | | | | | | | | | | | |
|---|--------------------------------------|-----------------|---------|---------|------|--------------|---------|---------|---------------|------------------------|----------------------|-------------------|--------------------|--------------------|
| ENG TT | 47,417 | ENG TC | 7,810 | | | | | | | | | | | |
| ENG CSI | 43 | ENG TSI | 140,44 | | | | | | | | | | | |
| ENG CSLSV | 2,338 | ENG TSLSV | 12,547 | | | | | | | | | | | |
| ENG C@LSV | 5,472 | ENG T@LSV | 34,870 | | | | | | | | | | | |
| DESCRIPTION | PART NO. | SERIAL NO. | CURRENT | | | INSTALLATION | | | | Model 1 LIMIT | Model 2 LIMIT | CALC TCSN | Model 1 CYC REM | Model 2 CYC REM |
| | | | TTSN | Model 2 | TCSN | TSN | Model 1 | Model 2 | CSN | | | | | |
| LPC ROTOR | 50B500 | A33715 | | | | | | | | | | | | |
| LPC FRONT HUB | 50B321 | CBDUAY4347 | 47418 | 7810 | 7810 | 47277 | 0 | 7767 | 7767 | 20000 | 15000 | 7767 | 9587 | 7190 |
| LPC STG 1.6 - 4 DRUM ROTOR | 50B422 | CBDUAY2231 | 47418 | 7810 | 7810 | 47277 | 0 | 7767 | 7767 | 20000 | 15000 | 7767 | 9587 | 7190 |
| LPC STG 1.6 DISK | 51B816 | CBVDJAX0186 | 47418 | 7810 | 7810 | 47277 | 0 | 7767 | 7767 | 20000 | 15000 | 7767 | 9587 | 7190 |
| LPC STG 2 DISK | 50B302 | CBDUAW3036 | 47418 | 7810 | 7810 | 47277 | 0 | 7767 | 7767 | 20000 | 15000 | 7767 | 9587 | 7190 |
| LPC STG 3 DISK | 50B403 | CBDUAX0771 | 47418 | 7810 | 7810 | 47277 | 0 | 7767 | 7767 | 20000 | 15000 | 7767 | 9587 | 7190 |
| LPC STG 4 DISK | 50B404 | CBDUAX0855 | 47418 | 7810 | 7810 | 47277 | 0 | 7767 | 7767 | 20000 | 15000 | 7767 | 9587 | 7190 |
| LPC/LPT COUPLING | 50A210 | CLPXAA0392 | 47418 | 7810 | 7810 | 47277 | 0 | 7767 | 7767 | 30000 | 30000 | 7767 | 22190 | 22190 |
| HPC ROTOR | 58H573 | B33715RC | | | | | | | | | | | | |
| HPC FRONT HUB | 51H572 | CENCAJ9268 | 47418 | 7810 | 7810 | 47277 | 0 | 7767 | 7767 | 20000 | 15000 | 7767 | 9587 | 7190 |
| HPC STG 5 DISK | 54H705 | CENCAM9267 | 47418 | 7810 | 7810 | 47277 | 0 | 7767 | 7767 | 20000 | 15000 | 7767 | 9587 | 7190 |
| HPC STG 6-12 DRUM ROTOR | 55H106-01 | CENCAS5295 | 47418 | 7810 | 7810 | 47277 | 0 | 7767 | 7767 | 20000 | 15000 | 7767 | 9587 | 7190 |
| HPC STG6 DISK | 53H976-02 | CENCAS2247 | 47418 | 7810 | 7810 | 47277 | 0 | 7767 | 7767 | 20000 | 15000 | 7767 | 9587 | 7190 |
| HPC STG7 DISK | 54H816-02 | CENCAS0596 | 47418 | 7810 | 7810 | 47277 | 0 | 7767 | 7767 | 20000 | 15000 | 7767 | 9587 | 7190 |
| HPC STG8 DISK | 54H816-03 | CENCAS2226 | 47418 | 7810 | 7810 | 47277 | 0 | 7767 | 7767 | 20000 | 15000 | 7767 | 9587 | 7190 |
| HPC STG9 DISK | 54H816-04 | CENCAS5417 | 47418 | 7810 | 7810 | 47277 | 0 | 7767 | 7767 | 20000 | 15000 | 7767 | 9587 | 7190 |
| HPC STG10 DISK | 53H976-06 | CENCAS3732 | 47418 | 7810 | 7810 | 47277 | 0 | 7767 | 7767 | 20000 | 15000 | 7767 | 9587 | 7190 |
| HPC STG11 DISK | 54H626-02 | CENCAR9966 | 47418 | 7810 | 7810 | 47277 | 0 | 7767 | 7767 | 20000 | 15000 | 7767 | 9587 | 7190 |
| HPC STG12 DISK | 55H106-02 | CENCAS3543 | 47418 | 7810 | 7810 | 47277 | 0 | 7767 | 7767 | 20000 | 15000 | 7767 | 9587 | 7190 |
| HPC STG 13-15 DRUM ROTOR | 56H013-01 | CENCAS4110 | 47418 | 7810 | 7810 | 47277 | 0 | 7767 | 7767 | 20000 | 15000 | 7767 | 9587 | 7190 |
| HPC STG13 DISK | 56H013-02 | CENCAS1668 | 47418 | 7810 | 7810 | 47277 | 0 | 7767 | 7767 | 20000 | 15000 | 7767 | 9587 | 7190 |
| HPC STG14 DISK | 56H013-03 | CENCAR8249 | 47418 | 7810 | 7810 | 47277 | 0 | 7767 | 7767 | 20000 | 15000 | 7767 | 9587 | 7190 |
| HPC STG15 DISK | 56H013-04 | CENCAS2058 | 47418 | 7810 | 7810 | 47277 | 0 | 7767 | 7767 | 20000 | 15000 | 7767 | 9587 | 7190 |
| HPC HUB STG 15 | 54H803-02 | CENCAS2526 | 47418 | 7810 | 7810 | 47277 | 0 | 7767 | 7767 | 20000 | 15000 | 7767 | 9587 | 7190 |
| HPC DRIVE SHAFT | 54H767 | CENCAR4236 | 47418 | 7810 | 7810 | 47277 | 0 | 7767 | 7767 | 20000 | 15000 | 7767 | 9587 | 7190 |
| HPC DIFFUSER AIRSEAL | 54H792 | CENCAM6208 | 55111 | 8383 | 8383 | 54970 | 0 | 8340 | 8340 | 20000 | 15000 | 8340 | 8823 | 6617 |
| HPT ROTOR | 53L090 | C33715 | | | | | | | | | | | | |
| HPT STG 1 HUB | 52L301 | CKLBB82409 | 47418 | 7810 | 7810 | 47277 | 0 | 7767 | 7767 | 20000 | 15000 | 7767 | 9587 | 7190 |
| HPT STG 2 INT. REAR HUB | 53L502 | CKLDCB0508 | 47418 | 7810 | 7810 | 47277 | 0 | 7767 | 7767 | 20000 | 15000 | 7767 | 9587 | 7190 |
| HPT STG 1 AIRSEAL (OUTER) | 50L879 | CKLBBN2610 | 47418 | 7810 | 7810 | 47277 | 0 | 7767 | 7767 | 18900 | 13900 | 7767 | 8281 | 6090 |
| HPT STG 2 BLADE RET. PLATE | 50L242 | CKLBBS4851 | 47418 | 7810 | 7810 | 47277 | 0 | 7767 | 7767 | 20000 | 15000 | 7767 | 9587 | 7190 |
| HPT STG 1 AIRSEAL (INNER) | 50L664 | CKLBCG2185 | 46787 | 7994 | 7994 | 46646 | 0 | 7951 | 7951 | 16800 | 14800 | 7951 | 7726 | 6806 |
| HPT STG 2 AIRSEAL | 53L030 | CKLBD80932 | 32992 | 5288 | 5288 | 32851 | 0 | 5245 | 5245 | 15900 | 13800 | 5245 | 9807 | 8512 |
| LPT ROTOR | 52N400 | D33715 | | | | | | | | | | | | |
| LPT 3 DISK | 50N803 | CLDLA62616 | 47418 | 7810 | 7810 | 47277 | 0 | 7767 | 7767 | 20000 | 15000 | 7767 | 9587 | 7190 |
| LPT 4 DISK | 50N924 | CLDLBD8441 | 47418 | 7810 | 7810 | 47277 | 0 | 7767 | 7767 | 20000 | 15000 | 7767 | 9587 | 7190 |
| LPT STG 5 HUB | 51N505 | CLDLBE5905 | 47418 | 7810 | 7810 | 47277 | 0 | 7767 | 7767 | 20000 | 15000 | 7767 | 9587 | 7190 |
| LPT 6 DISK | 50N466-01 | CLDLBD3744 | 47418 | 7810 | 7810 | 47277 | 0 | 7767 | 7767 | 20000 | 15000 | 7767 | 9587 | 7190 |
| LPT 3 AIRSEAL (INNER) | 50N412 | CLDLAK4015 | 47418 | 7810 | 7810 | 47277 | 0 | 7767 | 7767 | 20000 | 15000 | 7767 | 9587 | 7190 |
| LPT 4 AIRSEAL | 51N038 | CLDLCX3756 | 29312 | 5322 | 5322 | 29171 | 0 | 5279 | 5279 | 20000 | 15000 | 5279 | 12904 | 9678 |
| LPT 5 AIRSEAL | 50N419 | CLDLA49734 | 47418 | 7810 | 7810 | 47277 | 0 | 7767 | 7767 | 20000 | 15000 | 7767 | 9587 | 7190 |
| LPT SHAFT | 50A077 | CLSLAS8597 | 47418 | 7810 | 7810 | 47277 | 0 | 7767 | 7767 | 30000 | 30000 | 7767 | 22190 | 22190 |
| LPT 3 AIRSEAL (OUTER) | 50N521 | CLDLA95218 | 47418 | 7810 | 7810 | 47277 | 0 | 7767 | 7767 | 20000 | 15000 | 7767 | 9587 | 7190 |
| MOD 1 | LOW THRUST ENGINES: PW4056 | | | | | | | | | | First Limiter | 6090 | | |
| MOD 2 | HIGH THRUST ENGINES: PW4060 & PW4462 | | | | | | | | | | | | | |
| TO THE BEST OF MY KNOWLEDGE, THE DATA DEPICTED IN THIS REPORT IS VALID AND COMPLETE | | | | | | | | | Name: | EDWIN CAIAFFA | | Date: | 4-Feb-20 | |
| | | | | | | | | | Title: | QUALITY MANAGER | | Signature: | | |

| CUSTOMER | ENGINE S/N | ENGINE MODEL | LOCATION | INSPECTED BY: |
|------------|------------|--------------|----------------------|-------------------|
| SKYLEASE | 733715 | PW4462-3 | MIAMI, FL | W. DIEHL |
| WORK ORDER | A/C REG. | A/C MODEL | POSITION | INSPECTION DATE |
| S20002 | N/A | MD-11 | Transportation Stand | 20th January 2020 |

LOW PRESSURE COMPRESSOR INSPECTION. In reference with MD-11 A.M.M. Chapter 72-00-00.



CONDITION: SERVICEABLE

STAGE-1 FAN BLADES (QTY 36)

- No unserviceable damage found at the time of inspection.



CONDITION: SERVICEABLE

STAGE-1.6 BLADES

- No unserviceable damage found at the time of inspection.



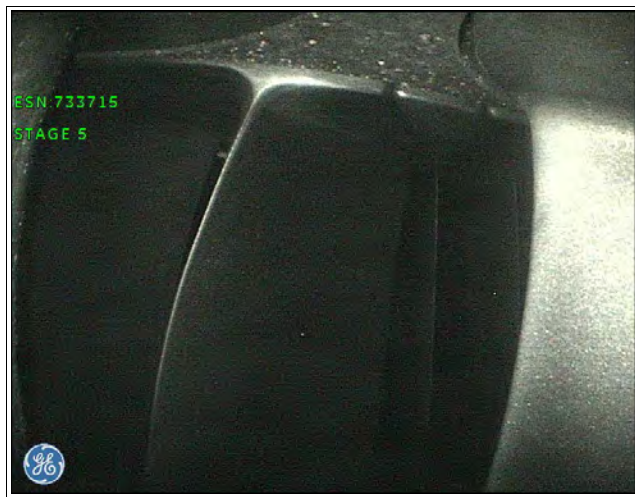


CONDITION: SERVICEABLE

STAGE-4 BLADES

- No unserviceable damage found at the time of inspection.

| CUSTOMER | ENGINE S/N | ENGINE MODEL | LOCATION | INSPECTED BY: |
|------------|------------|--------------|----------------------|-------------------|
| SKYLEASE | 733715 | PW4462-3 | MIAMI, FL | W. DIEHL |
| WORK ORDER | A/C REG. | A/C MODEL | POSITION | INSPECTION DATE |
| S20002 | N/A | MD-11 | Transportation Stand | 20th January 2020 |

HIGH PRESSURE COMPRESSOR INSPECTION. In reference with MD-11 A.M.M. Chapter 72-00-00.

| | |
|--|--|
|  | <p>CONDITION: SERVICEABLE</p> <p>STAGE-5 BLADES</p> <ul style="list-style-type: none"> No unserviceable damage found at the time of inspection. |
|  | <p>CONDITION: SERVICEABLE</p> <p>STAGE-6 BLADES</p> <ul style="list-style-type: none"> No unserviceable damage found at the time of inspection. |
|  | <p>CONDITION: SERVICEABLE</p> <p>STAGE-7 BLADES</p> <ul style="list-style-type: none"> No unserviceable damage found at the time of inspection. |

| CUSTOMER | ENGINE S/N | ENGINE MODEL | LOCATION | INSPECTED BY: |
|------------|------------|--------------|----------------------|-------------------|
| SKYLEASE | 733715 | PW4462-3 | MIAMI, FL | W. DIEHL |
| WORK ORDER | A/C REG. | A/C MODEL | POSITION | INSPECTION DATE |
| S20002 | N/A | MD-11 | Transportation Stand | 20th January 2020 |

HIGH PRESSURE COMPRESSOR INSPECTION. In reference with MD-11 A.M.M. Chapter 72-00-00.



CONDITION: SERVICEABLE

STAGE-8 BLADES

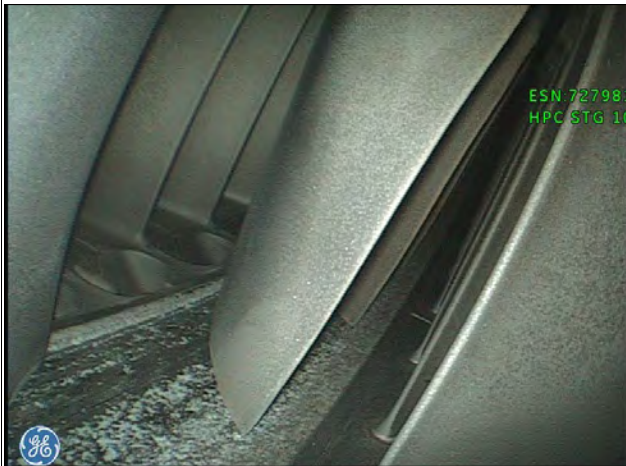
- No unserviceable damage found at the time of inspection.



CONDITION: SERVICEABLE

STAGE-9 BLADES

- No unserviceable damage found at the time of inspection.






CONDITION: SERVICEABLE

STAGE-10 BLADES

- No unserviceable damage found at the time of inspection.

| CUSTOMER | ENGINE S/N | ENGINE MODEL | LOCATION | INSPECTED BY: |
|------------|------------|--------------|----------------------|-------------------|
| SKYLEASE | 733715 | PW4462-3 | MIAMI, FL | W. DIEHL |
| WORK ORDER | A/C REG. | A/C MODEL | POSITION | INSPECTION DATE |
| S20002 | N/A | MD-11 | Transportation Stand | 20th January 2020 |

HIGH PRESSURE COMPRESSOR INSPECTION. In reference with MD11A.M.M. Chapter 72-00-00.

| | |
|--|---|
|  | <p>CONDITION: SERVICEABLE</p> <p>STAGE-11 BLADES</p> <ul style="list-style-type: none"> • One blade depicting evidence of previous blend repair on the leading edge. • No unserviceable damage found at the time of inspection. |
|  | <p>CONDITION: SERVICEABLE</p> <p>STAGE-12 BLADES</p> <ul style="list-style-type: none"> • No unserviceable damage found at the time of inspection. |
|  | <p>CONDITION: SERVICEABLE</p> <p>STAGE-13 BLADES</p> <ul style="list-style-type: none"> • No unserviceable damage found at the time of inspection. |

| CUSTOMER | ENGINE S/N | ENGINE MODEL | LOCATION | INSPECTED BY: |
|------------|------------|--------------|----------------------|-------------------|
| SKYLEASE | 733715 | PW4462-3 | MIAMI, FL | W. DIEHL |
| WORK ORDER | A/C REG. | A/C MODEL | POSITION | INSPECTION DATE |
| S20002 | N/A | MD-11 | Transportation Stand | 20th January 2020 |

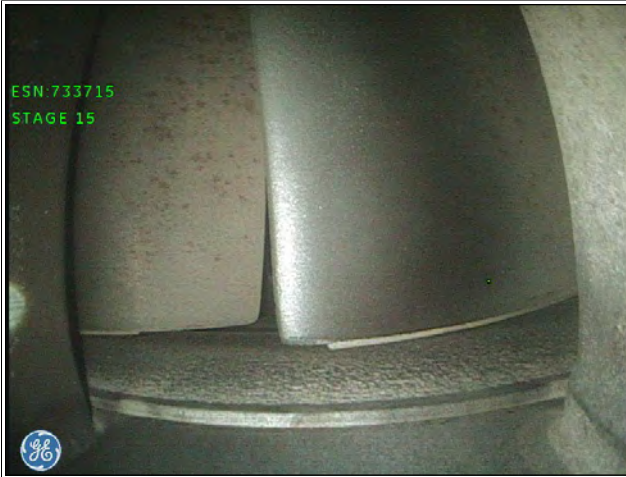
HIGH PRESSURE COMPRESSOR INSPECTION. In reference with MD-11 A.M.M. Chapter 72-00-00.



CONDITION: SERVICEABLE

STAGE-14 BLADES

- No unserviceable damage found at the time of inspection.



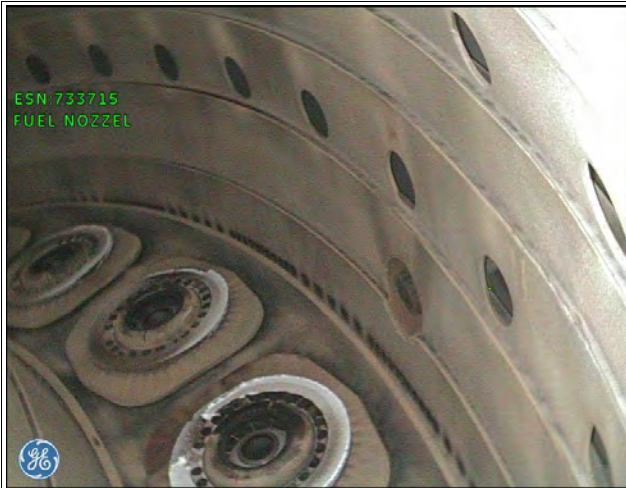
CONDITION: SERVICEABLE

STAGE-15 BLADES

- No unserviceable damage found at the time of inspection.

| | | | | |
|-------------------|-------------------|---------------------|----------------------|------------------------|
| CUSTOMER | ENGINE S/N | ENGINE MODEL | LOCATION | INSPECTED BY: |
| SKYLEASE | 733715 | PW4462-3 | MIAMI, FL | W. DIEHL |
| WORK ORDER | A/C REG. | A/C MODEL | POSITION | INSPECTION DATE |
| S20002 | N/A | MD-11 | Transportation Stand | 20th January 2020 |

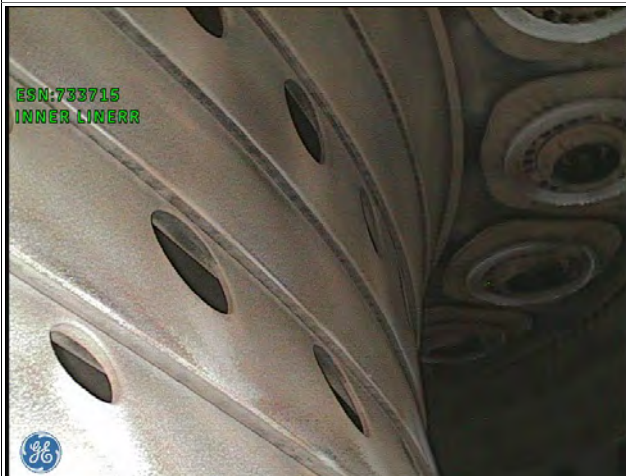
COMBUSTION CHAMBER INSPECTION. In reference with MD-11 A.M.M. Chapter 72-00-00.



CONDITION: SERVICEABLE

FUEL NOZZLES

- Fuel Nozzles were inspected with a 360-degrees inspection method.
- No unserviceable damage noted at the time of the inspection.



CONDITION: SERVICEABLE

INNER LINERS

- Inner Liners were inspected with a 360-degrees inspection method.
- Two each panel depict one each axial crack not connected to each other.
- No unserviceable damage noted at the time of the inspection.



CONDITION: SERVICEABLE

OUTER LINERS

- Outer Liners were inspected with a 360-degrees inspection method.
- One liner with an axial crack connected to a dilution hole.
- No unserviceable damage noted at the time of the inspection.

| CUSTOMER | ENGINE S/N | ENGINE MODEL | LOCATION | INSPECTED BY: |
|------------|------------|--------------|----------------------|-------------------|
| SKYLEASE | 733715 | PW4462-3 | MIAMI, FL | W. DIEHL |
| WORK ORDER | A/C REG. | A/C MODEL | POSITION | INSPECTION DATE |
| S20002 | N/A | MD-11 | Transportation Stand | 20th January 2020 |

HIGH PRESSURE TURBINE INSPECTION. In reference with MD-11 A.M.M. Chapter 72-00-00.



CONDITION: SERVICEABLE

STAGE-1 NOZZLE GUIDE VANES

- Nozzle Guide Vanes were inspected with a 360-degrees inspection method.
- No unserviceable damage noted at the time of the inspection.



CONDITION: SERVICEABLE

STAGE-1 BLADES (QTY 48)

- No unserviceable damage found at the time of inspection.



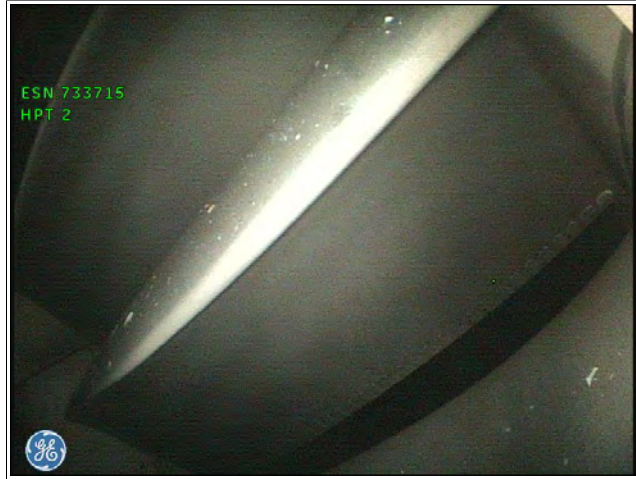

CONDITION: SERVICEABLE

STAGE-1 DUCT SEGMENTS

- Duct Segments were inspected with a 360-degrees inspection method.
- Ceramic spalling noted on multiple duct segments.
- Erosion and environmental build up noted at the time of the inspection.
- No unserviceable damage noted at the time of the inspection.

| CUSTOMER | ENGINE S/N | ENGINE MODEL | LOCATION | INSPECTED BY: |
|------------|------------|--------------|----------------------|-------------------|
| SKYLEASE | 733715 | PW4462-3 | MIAMI, FL | W. DIEHL |
| WORK ORDER | A/C REG. | A/C MODEL | POSITION | INSPECTION DATE |
| S20002 | N/A | MD-11 | Transportation Stand | 20th January 2020 |

HIGH PRESSURE TURBINE INSPECTION. In reference with MD-11 A.M.M. Chapter 72-00-00.

| | |
|--|---|
| | <p>CONDITION: N/A</p> <p>STAGE-2 NOZZLE GUIDE VANES</p> <ul style="list-style-type: none"> Service Bulletin not accomplished. |
|  | <p>CONDITION: SERVICEABLE</p> <p>STAGE-2 BLADES (QTY 48)</p> <ul style="list-style-type: none"> Metal Splatter noted on all blades. No unserviceable damage noted at the time of the inspection. |
|  | <p>CONDITION: SERVICEABLE</p> <p>STAGE-2 DUCT SEGMENTS</p> <ul style="list-style-type: none"> Duct Segments were inspected with a 360-degrees inspection method. Ceramic spalling noted on multiple duct segments. Erosion and environmental build up noted at the time of the inspection. No unserviceable damage noted at the time of the inspection. |

| CUSTOMER | ENGINE S/N | ENGINE MODEL | LOCATION | INSPECTED BY: |
|------------|------------|--------------|----------------------|-------------------|
| SKYLEASE | 733715 | PW4462-3 | MIAMI, FL | W. DIEHL |
| WORK ORDER | A/C REG. | A/C MODEL | POSITION | INSPECTION DATE |
| S20002 | N/A | MD-11 | Transportation Stand | 20th January 2020 |

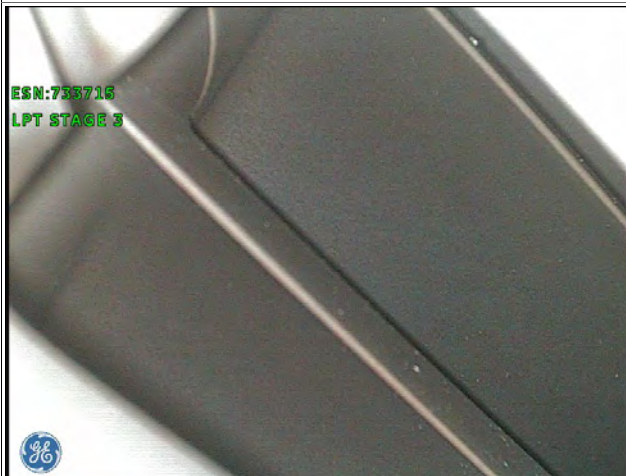
LOW PRESSURE TURBINE INSPECTION. In reference with MD-11 A.M.M. Chapter 72-00-00.



CONDITION: SERVICEABLE

STAGE-3 NOZZLE GUIDE VANES

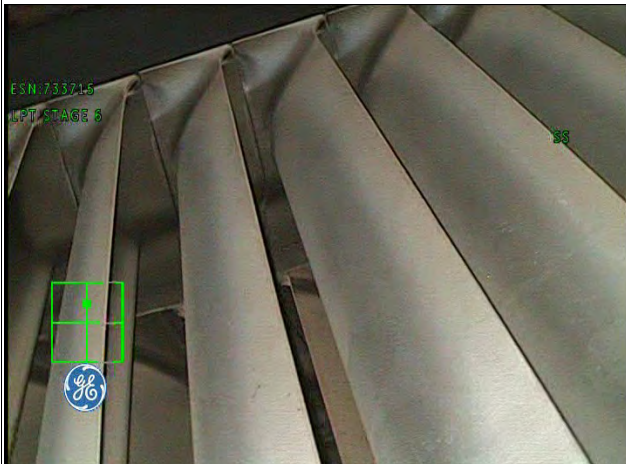
- No unserviceable damage noted at the time of the inspection.



CONDITION: SERVICEABLE

STAGE-3 BLADES (QTY 135)

- No unserviceable damage noted at the time of the inspection.



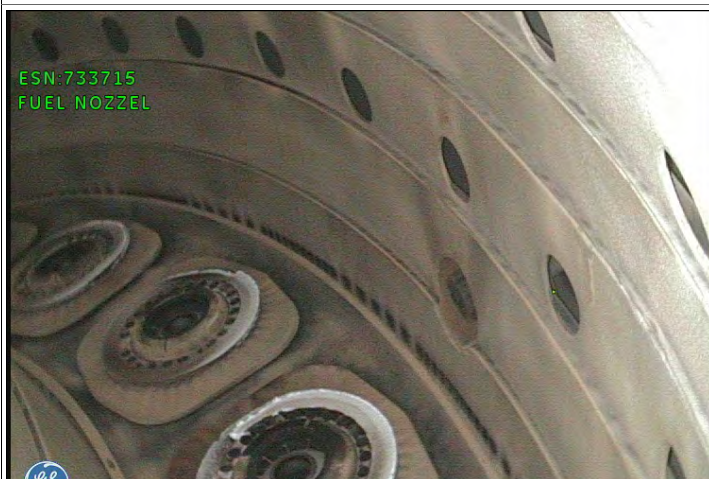
CONDITION: SERVICEABLE

STAGE-6 BLADES

- No unserviceable damage found at the time of inspection.

| CUSTOMER | ENGINE S/N | ENGINE MODEL | LOCATION | INSPECTED BY: |
|------------|------------|--------------|----------------------|-------------------|
| SKYLEASE | 733715 | PW4462-3 | MIAMI, FL | W. DIEHL |
| WORK ORDER | A/C REG. | A/C MODEL | POSITION | INSPECTION DATE |
| S20002 | N/A | MD-11 | Transportation Stand | 20th January 2020 |

ADDITIONAL PHOTOS



| CUSTOMER | ENGINE S/N | ENGINE MODEL | LOCATION | INSPECTED BY: |
|------------|------------|--------------|----------------------|-------------------|
| SKYLEASE | 733715 | PW4462-3 | MIAMI, FL | W. DIEHL |
| WORK ORDER | A/C REG. | A/C MODEL | POSITION | INSPECTION DATE |
| S20002 | N/A | MD-11 | Transportation Stand | 20th January 2020 |

ADDITIONAL PHOTOS



| CUSTOMER | ENGINE S/N | ENGINE MODEL | LOCATION | INSPECTED BY: |
|------------|------------|--------------|----------------------|-------------------|
| SKYLEASE | 733715 | PW4462-3 | MIAMI, FL | W. DIEHL |
| WORK ORDER | A/C REG. | A/C MODEL | POSITION | INSPECTION DATE |
| S20002 | N/A | MD-11 | Transportation Stand | 20th January 2020 |

ADDITIONAL PHOTOS



PRESERVATION TAG

1 FUEL 2 OIL

3 PRESERVATION PERIOD: 60 Days Plus

4 PRESERVED WITH: Mobile Jet Oil II

5 MODEL No.: PW442-3 6 ENGINE SERIAL No.: 739715

7 ACCOMPLISHED BY: [Signature] 8 DATE: 11/Jan/16



FORM QC-113

REV. 1

18/FEB/16



1 **FUEL** 2 **OIL**

3 PRESERVATION PERIOD: 60 Days, Plus

4 PRESERVED WITH: Rayco 1010

5 MODEL No.: PW4462-3 6 ENGINE SERIAL No.: 739715

7 ACCOMPLISHED BY: _____ 8 DATE: 27 Jan 20

FORM QC-113 REV. 1 18/FEB/16

PRESERVATION 1

WORK ORDER: S20002
 ENGINE MODEL: PW4462-3
 ESN: 733715
 CUSTOMER: Skylease
 DATE: 10 JAN, 2020

**PW4000
QEC INVENTORY FORM**

MD-11 CONFIGURATION

Instructions:

On Receipt of the Engine, check this list and mark with a "Y" in last column to agree parts are fitted, or mark with a "N" if not fitted. Use the Legend at the bottom when a P/N or S/N is Not Visible, Applicable or Required. TO VIEW PICTURE OF PART LOCATION CLICK ON THE ITEM NUMBER IN THE FIRST COLUMN.

| | | | | | | | |
|---|---------------------------------------|---------------------------------|--------------|---|--------------|-----------|---|
| 1 | IDG Adapter * | | 24-11-76 | 1 | 99167-749865 | 0278 | Y |
| 2 | IDGS Air Oil/Cooler | 11698-000, 12698-000, 14698-000 | 24-11-00 | 1 | N/V | N/V | Y |
| 3 | IDGS Air Shut-off Valve | 793999-X, 798850-X | 24-11-00 | 1 | N/V | N/V | Y |
| ATA 26 Fire Protection | | | | | | | |
| 4 | Fire Detector - Upper FWD | | 26-11-66 | 1 | N/A | N/A | N |
| 5 | Fire Detector- Lower FWD | | 26-11-66 | 1 | N/A | N/A | N |
| 6 | Fire Detector - Upper AFT | | 26-11-66 | 1 | N/A | N/A | N |
| 7 | Fire Detector - Lower AFT | | 26-11-66 | 1 | N/A | N/A | N |
| ATA 29 Hydraulic System | | | | | | | |
| 9 | Hydraulic Pump (Front)* | | 29-11-03 | 1 | 887673 | MX-548670 | Y |
| 10 | Hydraulic Pump (Rear)* | | 29-11-04 | 1 | N/V | N/V | Y |
| 11 | Hydraulic Filter Module * | | | 1 | 0527-5001 | 0367 | Y |
| 12 | Hydraulic Adapter | | | 2 | N/V | N/V | Y |
| 13 | Hydraulic Coupler | | | 3 | N/V | N/V | Y |
| 14 | Hydraulic Dampener | | | 4 | N/V | N/V | Y |
| ATA 30 Ice & Rain Protection | | | | | | | |
| 15 | Anti-Ice Shut-off Valve * | N/R | | 1 | N/R | N/R | |
| 16 | Nose Cowl Anti Ice Valve | 3213868-4 | | 1 | N/A | N/A | N |
| 17 | Anti-Ice Pressure Switch * | N/R | | 1 | N/R | N/R | |
| ATA 36 Pneumatic | | | | | | | |
| 18 | 8th Stage Duct Assy | 332T4326- | | 1 | 221-4303505 | N/V | Y |
| | 8th Stage Bleed Check Valve (Right) * | | | 1 | 3202176-3 | 1766 | Y |
| 19 | 8th Stage Bleed Check Valve (Left) * | | | 1 | 3202176-3 | 2030 | Y |
| 20 | 15th Stage Manifold Assy | 332T4321- | 221-5302-503 | 1 | 221-5302-503 | N/V | Y |
| 21 | 15th Stage Duct Assy | 332T4323- | | 1 | N/A | N/A | N |

N/A: Not Applicable N/R: Not Required N/V: Not Visible

WORK ORDER: S20002
 ENGINE MODEL: PW4462-3
 ESN: 733715
 CUSTOMER: Skylease
 DATE: 10 JAN, 2020

**PW4000
QEC INVENTORY FORM**

MD-11 CONFIGURATION

ATA 71 Power Plant

| | | | | | | | |
|--------------------|------------------------------|--------------|--|---|---------------|-----|---|
| 22 | FWD Engine Mount Assembly * | 221-4086-17 | | 1 | 221-4004-505H | 012 | Y |
| 23 | Rear Engine Mount Assembly * | 221-0263-503 | | 1 | 221-0261-501M | 012 | Y |

ATA 72 Engine

| | | | | | | | |
|--------------------|-----------------------|-----|----------|---|-----|-----|---|
| 24 | Compressor Inlet Cone | N/R | 72-30-00 | 1 | N/R | N/R | Y |
|--------------------|-----------------------|-----|----------|---|-----|-----|---|

ATA 73 Fuel & Control

| | | | | | | | |
|--------------------|-----------------------------------|--|---------------|----|-------------------|-----------|---|
| 25 | Main Fuel Pump * | 825501-8-12 | | 1 | 825501-12 | 4677 | Y |
| 26 | Fuel Injectors (24) | 50J482-001 | | 24 | | | |
| 27 | Engine Electronic Control (EEC) * | 52D637 (791100-4-094), 791100-4-111 | 73-23-00 | 1 | 991100-6-110 | C94042027 | Y |
| 28 | Plug-Programming, EEC | 51D411 CL14 | 73-23-00 | 1 | 51D415 | NSN | Y |
| 29 | PMA Stator | 51R069, 52R001 (430070-1, 2710540) | 73-23-00 | 1 | N/V | N/V | Y |
| 30 | Transducer – EEC Speed (N1) | 50A647 | 73-23-00 | | 52A193 | 701 | Y |
| 31 | Immersion Thermocouple | 50U391 (HAD22501) | 73-21-47 | 1 | 23504-001 | 353582 | Y |
| 32 | Fuel Metering Unit | 801000-4 | 73-21-38 / 64 | 1 | 801000-4 | F18352 | Y |
| 33 | Fuel By-Pass Valve | 58T798 (813520-1) | 73-21-58 | 1 | 813520-1 | GT45-1 | Y |
| 34 | Fuel Differential Pressure Switch | 42D395 | 73-34-00 | 1 | 42D3951 | 01170 | Y |
| 35 | Supplement Control Unit (SCU) | 2118960-004 | 73-21-00 | 1 | 06848-1502587-003 | ESF0666 | Y |
| 36 | SCU Program Plug | 53T732 | 73-21-37 | 1 | 53T495 | NSN | Y |
| 37 | Fuel Distribution Valve | 788366-X | 73-13-00 | 1 | 753366-2 | 6TA40-1 | Y |
| 38 | Fuel Flow Transmitter | 8TJ124GGN3, (9-217-30), S347T001 | 71-00-02 | 1 | 08748/9-217-30 | 3315 | Y |
| 39 | Fuel Pressure Transmitter | 418-06124 | | 1 | 418-06124 | AAR0041 | Y |
| 40 | Wiring Harness (W1) | 45932, 45859, 46224, 46460, 42085 | 73-23-00 | 1 | N/A | N/A | N |
| 41 | Wiring Harness (W2) | 45754, 45861, 46149, 46228, 46462, 46147, 420087 | 73-23-00 | 1 | N/V | N/V | Y |
| 42 | Wiring Harness (W3) | 45934, | 73-23-00 | 1 | N/V | N/V | Y |
| 43 | Wiring Harness (W4) | | 73-23-00 | 1 | N/V | N/V | Y |

N/A: Not Applicable N/R: Not Required N/V: Not Visible

WORK ORDER: S20002
ENGINE MODEL: PW4462-3
ESN: 733715
CUSTOMER: Skylease
DATE: 10 JAN, 2020

**PW4000
QEC INVENTORY FORM**

MD-11 CONFIGURATION

| | | | | | | | |
|----|----------------------|--------------|----------|---|-----|-----|---|
| 44 | Wiring Harness (W5) | | 73-23-00 | 1 | N/V | N/V | Y |
| 45 | Wiring Harness (W6) | | 73-23-00 | 1 | N/V | N/V | Y |
| 46 | IDG Wiring Harness | 286T5302-103 | 24-11-11 | 1 | N/V | N/V | Y |
| 47 | Wiring Harness (W11) | | | 1 | N/V | N/V | Y |
| 48 | Wiring Harness (W12) | | | 1 | N/V | N/V | Y |

ATA 74 Ignition

| | | | | | | | |
|----|-------------------------|-------------|----------|---|-------------|------------|---|
| 49 | Ignition Exciter Top | 10-621630-1 | 74-11-04 | 1 | 10-621630-1 | 9642426 | Y |
| 50 | Ignition Exciter Bottom | 10-621630-1 | 74-11-04 | 1 | 10-621630-1 | ASWCAJ4549 | Y |
| 51 | Ignition Cable Top | 10-609660-X | 74-21-00 | 1 | 10-609660-9 | CSWCCB8897 | Y |
| 52 | Ignition Cable Bottom | 10-609660-X | 74-21-00 | 1 | 10-609660-9 | CSWCCA0913 | Y |

ATA 75 Air

| | | | | | | | |
|----|--|------------------------------|----------|---|-------------|-------------|---|
| 53 | Stator Vane Actuator (SVA Actuator) | 55H786, 56H207 (813664-1) | 75-31-33 | 1 | 819802-1 | F48387 | Y |
| 54 | High Stage Control Valve | 979146-4 | 75-33-10 | 1 | 3290272-6 | 1159 | Y |
| 55 | Turbine Cooling Air Valve Left | 1108V0100-X | 75-33-00 | 1 | N/V | N/V | Y |
| 56 | Turbine Cooling Air Valve Right | 54H488 (20P78-X) | 75-24-00 | 1 | 20P78-6 | 1005 | Y |
| 57 | Cooling Valve Control Cable | 59T756 (1605140-002) | 75-24-13 | 1 | 59T756 | 3066 | Y |
| 58 | Turbine Case Cooling Actuator (TCC Actuator) | 5830201-1XX | 75-24-00 | 1 | 5830201-111 | 2536 | Y |
| 59 | Check Valve 8th Stage (LH) | 3202176-3 | 75-33-12 | 1 | 3202176-3 | 1766 | Y |
| 60 | Check Valve 8th Stage (RH) | 3202176-3 | 75-24-12 | 1 | 3202176-3 | 2030 | Y |
| 61 | TVBC Valve (LH) | 1110V0500-X | 75-24-00 | 1 | 1110V0500-5 | 3477C | Y |
| 62 | TVBC Valve (RH) | 1110V0500-X | 75-24-00 | 1 | 1110V0500-3 | 3543C | Y |
| 63 | Air Shut-off Valve Switch | 53H070 (03P75-3) | 75-24-00 | 1 | N/A | N/A | N |
| 64 | High Stage Sensor | HAD18988 | 75-24-18 | 1 | N/A | N/A | N |
| 65 | Actuator- 2.5 Bleed | 790210-1, 808726-X, 814890-X | 75-32-00 | 1 | N/V | N/V | Y |
| 66 | Stage 2.9 Stability Bleed Valve | 04P23-XX 55H703, 56H247 | 75-35-00 | 1 | N/V | N/V | Y |
| 67 | 2.95 Bleed Valve (RH) | (1115V0300-X, 1115VQ700-X) | 75-35-00 | 1 | 1115V0700-9 | CSGCVK6429C | Y |

N/A: Not Applicable N/R: Not Required N/V: Not Visible

WORK ORDER: S20002
 ENGINE MODEL: PW4462-3
 ESN: 733715
 CUSTOMER: Skylease
 DATE: 10 JAN, 2020

**PW4000
 QEC INVENTORY FORM**

MD-11 CONFIGURATION

| | | | | | | | |
|----|------------------------------------|--|----------|---|-------------|-------|---|
| 68 | 2.95 Bleed Valve (LH) | 55H703, 56H247 (1115V0300-X, 1115V0700-X) | 75-35-00 | 2 | 1115V0700-9 | 5961C | Y |
| 69 | Pneumatic Relay Valve | 50G985, 51G070, 52GXXX (07P95-X) | 75-35-00 | 1 | N/A | N/A | N |
| 70 | High Press Bleed Air Filter | 54H771 | 75-33-00 | 1 | N/A | N/A | N |
| 71 | High Press Bleed Air Filter | 54H771 | 75-33-00 | 1 | N/A | N/A | N |
| 72 | High Press Bleed Air Filter | 54H771 | 75-33-00 | 1 | N/A | N/A | N |
| 73 | High Press Bleed Air Filter | 54H771 | 75-33-00 | 1 | N/A | N/A | N |
| 74 | LPT Cooling Valve (TCC Air Valve) | 56T203 (5830202-10X) | 75-24-00 | 1 | 5830202-109 | 2570 | Y |
| 75 | HPT Cooling Valve (TCC Air Valve) | 52T089 (5830203-10X) | 75-24-00 | 1 | 5830203-105 | 2543 | Y |
| 76 | Air Pressure Regulating Valve | 3290280-3 | | 1 | 3290280-4 | 144 | Y |
| 77 | IDGS Air/Oil Heat Exchanger Valve | 1109V0300-XX | 75-33-00 | 1 | N/V | N/V | Y |
| 78 | Secondary Flow Control Valve Right | 1102V0500-X | 75-33-00 | 1 | 1102V0500-6 | 3543C | Y |
| 79 | Secondary Flow Control Valve Left | 1102V0500-X | 75-33-00 | 1 | 1102V0500-6 | 31700 | Y |

ATA 77 Indicating

| | | | | | | | |
|----|--|---------------------------|----------|---|--------------|-----|---|
| 80 | TT-3 Probe | 50J343, 50J344 (HAD18952) | 77-21-05 | 1 | N/A | N/A | N |
| 81 | EGT Thermocouple Box & Cable | 50P281 (HAD20458) | 77-21-04 | 1 | N/V | N/V | Y |
| 82 | T4.95 Immersion Thermocouple 1 O'CLOCK | 50P029 (HAD18540) | 77-21-05 | 1 | N/V | N/V | Y |
| 83 | T4.95 Immersion Thermocouple 5 O'CLOCK | 50P029 (HAD18540) | 77-21-05 | 1 | N/V | N/V | Y |
| 84 | T4.95 Immersion Thermocouple 7 O'CLOCK | 50P029 (HAD18540) | 77-21-05 | 1 | N/V | N/V | Y |
| 85 | T4.95 Immersion Thermocouple 9 O'CLOCK | 50P029 (HAD18540) | 77-21-05 | 1 | N/V | N/V | Y |
| 86 | Vibration Pick up Accelerometer | | 77-21-05 | 1 | 144-151-0001 | N/V | Y |

ATA 78 Exhaust

| | | | | | | | |
|----|---------------------------------|-------------|----------|---|--------------|---------|---|
| 87 | Exhaust Plug | 314T4320-13 | 78-11-15 | 1 | N/V | N/V | Y |
| 88 | Exhaust Sleeve (Primary Nozzle) | 314T3310-3 | 78-11-06 | 1 | 221/0051/535 | 0689001 | Y |

ATA 79 Oil

| | | | | | | | |
|----|------------------------|---------------------------------|----------|---|-----------------|-----------|---|
| 89 | Main Oil Pump | 5008437, 764224 | 79-21-00 | 1 | PL5008437-679-4 | SN5008437 | Y |
| 90 | Air/Oil Heat Exchanger | 11622-000, 12622-000, 13622-000 | 79-21-00 | 1 | N/V | N/V | Y |

WORK ORDER: S20002
 ENGINE MODEL: PW4462-3
 ESN: 733715
 CUSTOMER: Skylease
 DATE: 10 JAN, 2020

**PW4000
 QEC INVENTORY FORM**

MD-11 CONFIGURATION

| | | | | | | | |
|--------------------|-----------------------------------|----------------------|----------|---|--------------|---------|---|
| 91 | Engine Air Shut-off Valve | 788399-X | 79-21-00 | 1 | N/A | N/A | N |
| 92 | #3 Brg. Breather Restrictor Valve | 54T389 (10P18-10) | 79-23-11 | 1 | N/V | N/V | Y |
| 93 | Oil Differential Pressure Switch | 50U413-001, 21SN-402 | 79-21-00 | 1 | 21SN04-353 | X86165A | Y |
| 94 | Oil Cooler By-Pass Valve | 51H336 (3830032-105) | 79-21-16 | 1 | 3831167-102 | R001414 | Y |
| 95 | Oil Pressure Transmitter * | 8908314 (418-01124) | 79-21-76 | 1 | 221D4033-501 | 0542107 | Y |
| 96 | IDG Fuel / Oil Cooler | 53H669 (47111-1204) | 79-21-00 | 1 | 47111-1201 | TR8194 | Y |
| 97 | Low Oil Pressure Switch | 21SN04-353 | 79-33-05 | 1 | 21SN04-352 | P137A | Y |
| 98 | Oil Quantity Transmitter * | 77-109-13 | 79-32-04 | 1 | N/V | N/V | Y |
| 99 | Oil Temperature Sensor | 56B3C1 | | 1 | N/V | N/V | Y |

ATA 80 Starter

| | | | | | | | |
|---------------------|-------------------------|--------------------|----------|---|-----------|--------|---|
| 100 | Starter | 774860A4, 774860A5 | 80-12-03 | 1 | N/V | N/V | Y |
| 101 | Starter Shut-off Valve | 775538-XX | 80-12-05 | 1 | 775538-16 | 900422 | Y |
| 102 | Starter Pressure Switch | | 80-12-05 | 1 | N/V | N/V | Y |

| LEGEND |
|------------------------------------|
| N = NO |
| N/A = NOT APPLICABLE |
| NPN = NO PART NUMBER |
| NSN = NO SERIAL NUMBER |
| NV - NOT VISIBLE |
| XXXX = INTERNAL INACCESSIBLE ITEMS |

PERFORMED BY: _____

DATE: _____

N/A: Not Applicable N/R: Not Required N/V: Not Visible



SKY LEASE CARGO

DISK SHEET COMPONENT REPORT

733715

Report Date 1/6/2020

STATUS: INSTALLED

| | | | | |
|--|--|---------------|---|----------------------------------|
| Serial Number: 733715 | Tail Num: N950AR | Pos: 1 | TAT at Eng. Inst. or Aircraft Delivery: 78316 00 hr mm | TAT (At Removal): 0 00 |
| Model Number: PW4460-3 | Installed Date: Dec 7/2019 | | TAC at Eng. Inst. or Aircraft Delivery: 18535 | TAC (At Removal): 0 |
| Current Eng. TSI: 140 44 hr mm | Eng. TSN At Inst'n or AC Delivery: 47277.00 hr mm | | A/C TAT at Last Eng. Installation: 0 00 hr mm | Removed From Reason For Removal: |
| Current Eng. CSI: 43 | Eng. CSN At Inst'n or AC Delivery: 7767 | | A/C TAC at Last Eng. Installation: 0 | |
| TSN at Last Eng. Inst'n: 47277 00 hr mm | Engine Current TSN: 47417 44 hr mm | | As of log Page: 88635 | |
| CSN at Last Eng. Inst'n: 7767 | Engine Current CSN: 7810 | | A/C Current TAT: 78456 44 hr mm | |
| Current TSLSV: 12547 44 hr mm | Eng. TSI at Inst. or A/C Delivery: 0 00 hr mm | | A/C Current TAC: 18578 | |
| Current CSLSV: 2138 | Eng. CSI at Inst. or A/C Delivery: 0 | | TSI Since Eng. Inst. or A/C Delivery: 140.44 hr mm | |
| | | | CSI Since Eng. Inst. or A/C Delivery: 43 | |

| Keyword | Part Number | Serial Number | ToT Hrs Install | ToT Cyc Install | ToT Hrs Current | ToT Cyc Current | Limit Hours | Limit Cycles | Rem Hours | Rem Cycles | REMARKS | Status | Ref AD Num |
|---------------------------|-------------|---------------|-----------------|-----------------|-----------------|-----------------|-------------|--------------|-----------|------------|---------|--------|------------|
| MOD 1 LPC ROTOR | | | | | | | | | | | | | |
| LPC FRONT HUB | 50B321 | CBDUAY4347 | 47,277 | 7,767 | 47418 | 7810 | 15000 | | | 7190 | | | |
| LPC STG 1 B W DRUM HDTCR | 50B422 | CBDUAY2231 | 47,277 | 7,767 | 47418 | 7810 | 15000 | | | 7190 | | | |
| LPC STG 1 B DISK | 51B816 | CBVDUAX0186 | 47,277 | 7,767 | 47418 | 7810 | 15000 | | | 7190 | | | |
| LPC STG 2 DISK | 50B302 | CBDUAW3036 | 47,277 | 7,767 | 47418 | 7810 | 15000 | | | 7190 | | | |
| LPC STG 3 DISK | 50B403 | CBDUAX0771 | 47,277 | 7,767 | 47418 | 7810 | 15000 | | | 7190 | | | |
| LPC STG 4 DISK | 50B404 | CBDUAX0855 | 47,277 | 7,767 | 47418 | 7810 | 15000 | | | 7190 | | | |
| LPC/LPT COMPLING | 50A210 | CLPXA0392 | 47,277 | 7,767 | 47418 | 7810 | 30000 | | | 22150 | | | |
| MOD 2 HPC ROTOR | | | | | | | | | | | | | |
| HPC FRONT HUB | 51H572 | CENCAJ9368 | 47,277 | 7,767 | 47418 | 7810 | 15000 | | | 7190 | | | |
| HPC STG 3 DISK | 54H705 | CENDAM9267 | 47,277 | 7,767 | 47418 | 7810 | 15000 | | | 7190 | | | |
| HPC STG 6-2 DRUM ROTOR | 55H106-01 | CENCAS5295 | 47,277 | 7,767 | 47418 | 7810 | 15000 | | | 7190 | | | |
| HPC STG 6 DISK | 53H976-02 | CENCAS2247 | 47,277 | 7,767 | 47418 | 7810 | 15000 | | | 7190 | | | |
| HPC STG 7 DISK | 54H816-02 | CENCAS0596 | 47,277 | 7,767 | 47418 | 7810 | 15000 | | | 7190 | | | |
| HPC STG 8 DISK | 54H816-03 | CENCAS2226 | 47,277 | 7,767 | 47418 | 7810 | 15000 | | | 7190 | | | |
| HPC STG 9 DISK | 54H816-04 | CENCAS5417 | 47,277 | 7,767 | 47418 | 7810 | 15000 | | | 7190 | | | |
| HPC STG 10 DISK | 53H976-08 | CENCAS3732 | 47,277 | 7,767 | 47418 | 7810 | 15000 | | | 7190 | | | |
| HPC STG 11 DISK | 54H626-02 | CENCAR9966 | 47,277 | 7,767 | 47418 | 7810 | 15000 | | | 7190 | | | |
| HPC STG 12 DISK | 55H106-02 | CENCAS3543 | 47,277 | 7,767 | 47418 | 7810 | 15000 | | | 7190 | | | |
| HPC STG 13 15 DRUM ROTOR | 56H013-01 | CENCAS4110 | 47,277 | 7,767 | 47418 | 7810 | 15000 | | | 7190 | | | |
| HPC STG 13 DISK | 56G013-02 | CENCAS1668 | 47,277 | 7,767 | 47418 | 7810 | 15000 | | | 7190 | | | |
| HPC STG 14 DISK | 56H013-03 | CENCAR8249 | 47,277 | 7,767 | 47418 | 7810 | 15000 | | | 7190 | | | |
| HPC STG 15 DISK | 56H013-04 | CENCAS2058 | 47,277 | 7,767 | 47418 | 7810 | 15000 | | | 7190 | | | |
| HPC DRIVE SHAFT | 54H767 | CENCAR4236 | 47,277 | 7,767 | 47418 | 7810 | 15000 | | | 7190 | | | |
| HPC HUB STAGE 15 | 54H803-02 | CENCAS2526 | 47,277 | 7,767 | 47418 | 7810 | 15000 | | | 7190 | | | |
| HPC DIFFUSER AIRSEAL | 54H792 | CENCAM6208 | 54,970 | 8,340 | 55111 | 8383 | 15000 | | | 6617 | | | |
| MOD 3 HPT ROTOR | | | | | | | | | | | | | |
| HPT STG 1 HUB | 52L301 | CKLBB82409 | 47,277 | 7,767 | 47418 | 7810 | 15000 | | | 7190 | | | |
| HPT STG 2 INT REAR HUB | 53L502 | CKLDCB0508 | 47,277 | 7,767 | 47418 | 7810 | 15000 | | | 7190 | | | |
| HPT STG 1 AIRSEAL (OUTER) | 50L879 | CKLBB12610 | 47,277 | 7,767 | 47418 | 7810 | 13900 | | | 6090 | | | |
| HPT STG 2 BLADE RET PLATE | 50L242 | CKLBS4851 | 47,277 | 7,767 | 47418 | 7810 | 15000 | | | 7190 | | | |

CERTIFIED BY:

[Signature]

C. DE REGT

NOTE Times - HH MM Hours Minutes

APRIL 6TH '20





SKY LEASE CARGO

DISK SHEET COMPONENT REPORT

733715

Report Date 1/6/2020

STATUS: INSTALLED

| | | | | | |
|-----------------------------------|--|--------|--|-------|---------------------------------|
| Serial Number: 733715 | Tail Num: N950AR | Pos: 1 | TAT at Eng. Inst. or Aircraft Delivery: 78316.00 | hr mm | TAT (At Removal) 0.00 |
| Model Number: PV4460-3 | Installed Date: Dec/7/2019 | | TAC at Eng. Inst. or Aircraft Delivery: 18535 | | TAC (At Removal) 0 |
| Current Eng. TSI: 140.44 | Eng TSN At Inst'n or AC Delivery: 47277.00 | hr mm | A/C TAT at Last Eng. Installation: 0.00 | hr mm | Removed From Reason For Removal |
| Current Eng. CSI: 43 | Eng CSN At Inst'n or AC Delivery: 7767 | | A/C TAC at Last Eng. Installation: 0 | | |
| TSN at Last Eng. Inst'n: 47277.00 | Engine Current TSN: 47417.44 | hr mm | As off log Page: 88535 | | |
| CSN at Last Eng. Inst'n: 7767 | Engine Current CSN: 7810 | | A/C Current TAT: 78456.44 | hr mm | |
| Current TBSLV: 12547.44 | Eng. TSI at Inst. or A/C Delivery: 0.00 | hr mm | A/C Current TAC: 18578 | | |
| Current CSLSV: 2738 | Eng. CSI at Inst. or A/C Delivery: 0 | | TSI Since Eng. Inst. or A/C Delivery: 140.44 | hr mm | |
| | | | CSI Since Eng. Inst. or A/C Delivery: 43 | | |

| Keyword | Part Number | Serial Number | ToT Hrs Install | ToT Cyc Install | ToT Hrs Current | ToT Cyc Current | Limit Hours | Limit Cycles | Rem Hours | Rem Cycles | REMARKS | Status | Ref. AD Num |
|---------------------------|-------------|---------------|-----------------|-----------------|-----------------|-----------------|-------------|--------------|-----------|------------|---------|--------|-------------|
| HPT 5TG 1 AIRSEAL (INNER) | 50L664 | CKLBCG2185 | 46.646 | 1.951 | 46787 | 7994 | 14800 | | 6806 | | | | |
| HPT 5TG 2 AIRSEAL | 53L030 | CKLBD60032 | 32.051 | 5.245 | 32992 | 5208 | 13800 | | 6512 | | | | |
| LPT 3 DISK | 50H803 | CLDLA62616 | 47.277 | 7.767 | 47410 | 7810 | 15000 | | 7190 | | | | |
| MOD 4 LPT ROTOR | | | | | | | | | | | | | |
| LPT 4 DISK | 50H924 | CLDLBD8441 | 47.277 | 7.767 | 47410 | 7810 | 15000 | | 7190 | | | | |
| LPT 5TG 5 IRUD | 51H505 | CLDLBE5905 | 47.277 | 7.767 | 47410 | 7810 | 15000 | | 7190 | | | | |
| LPT 6 DISK | 50H466-01 | CLDLBD3744 | 47.277 | 7.767 | 47410 | 7810 | 15000 | | 7190 | | | | |
| LPT 3 AIRSEAL (OUTER) | 50H521 | CLDLA95218 | 47.277 | 7.767 | 47418 | 7810 | 15000 | | 7190 | | | | |
| LPT 4 AIRSEAL | 51H038 | CLDLCX3766 | 29.171 | 5.279 | 29312 | 5322 | 15000 | | 9678 | | | | |
| LPT 5 AIRSEAL | 50H419 | CLDLA40734 | 47.277 | 7.767 | 47410 | 7810 | 15000 | | 7190 | | | | |
| LPT SHAFT | 50A077 | CLSLA58597 | 47.277 | 7.767 | 47410 | 7810 | 30000 | | 22190 | | | | |
| LPT 3 AIRSEAL (INNER) | 50H412 | CLDLAK4015 | 47.277 | 7.767 | 47410 | 7810 | 15000 | | 7190 | | | | |

A



CERTIFIED BY:

NOTE: Times = HH:MM Hours/Minutes

April 6TH '20

C.O.E REGT.

| ENGINE AD STATUS | | | | | REPORT PREPARED BY: Melanie Palmeri | | | CURRENT TAT: 58,475 | | | | | | |
|--|--|--------------------------|---|--------------------------------------|--|----------------------------|--|---------------------------|-----------------|------|----------|------|----------------|--|
| CURRENT/LAST OPERATOR: WORLD AIRWAYS, INC. | | | | | REPORT DATE: 31-May-12 | | | CURRENT TAG: 11,238 | | | | | | |
| CURRENT LOCATION: OFF-WING | | | | | COMMENTS: | | | CURRENT DATE: 20-May-2012 | | | | | | |
| AIRCRAFT TYPE: | MD-11 | Config: | PAX | Yr Mfg/Ag: | ENGINE TYPE: PW4462 | | | | | | | | | |
| SERIAL NUMBER: | 48437 | Line #: | 506 | 1992 | ASSIGNED ENGINE S/N: | | | | | | | | | |
| REGISTRATION #: | N272WA | Var. #: | - | 20 YRS | Pos # 1: | P733715 | Pos # 2: | APU | Pos # 3: | | | | | |
| Engine Type: | PW4462-J <th>AC Time at Installation:</th> <td>Hours: 54,157 Cycles: 18,406 <th>Date Eng. Install:</th> <td>18-Oct-2010 <th>Eng. Time at Installation:</th> <td>Hours: 42,959 Cycles: 6,945 <th>Date of Last SV:</th> <td>5/25/09 </td></td></td></td> | AC Time at Installation: | Hours: 54,157 Cycles: 18,406 <th>Date Eng. Install:</th> <td>18-Oct-2010 <th>Eng. Time at Installation:</th> <td>Hours: 42,959 Cycles: 6,945 <th>Date of Last SV:</th> <td>5/25/09 </td></td></td> | Date Eng. Install: | 18-Oct-2010 <th>Eng. Time at Installation:</th> <td>Hours: 42,959 Cycles: 6,945 <th>Date of Last SV:</th> <td>5/25/09 </td></td> | Eng. Time at Installation: | Hours: 42,959 Cycles: 6,945 <th>Date of Last SV:</th> <td>5/25/09 </td> | Date of Last SV: | 5/25/09 | | | | | |
| MSN: | P733715 <th>Hours:</th> <td>54,157 <th>Date Eng. Install:</th> <td>18-Oct-2010 <th>Hours:</th> <td>42,959 <th>TSI:</th> <td>12,407 </td></td></td></td> | Hours: | 54,157 <th>Date Eng. Install:</th> <td>18-Oct-2010 <th>Hours:</th> <td>42,959 <th>TSI:</th> <td>12,407 </td></td></td> | Date Eng. Install: | 18-Oct-2010 <th>Hours:</th> <td>42,959 <th>TSI:</th> <td>12,407 </td></td> | Hours: | 42,959 <th>TSI:</th> <td>12,407 </td> | TSI: | 12,407 | | | | | |
| Pos #: | 1 <th>Cycles:</th> <td>18,406 <th>Date Eng. Install:</th> <td>18-Oct-2010 <th>Cycles:</th> <td>6,945 <th>CSI:</th> <td>2,295 </td></td></td></td> | Cycles: | 18,406 <th>Date Eng. Install:</th> <td>18-Oct-2010 <th>Cycles:</th> <td>6,945 <th>CSI:</th> <td>2,295 </td></td></td> | Date Eng. Install: | 18-Oct-2010 <th>Cycles:</th> <td>6,945 <th>CSI:</th> <td>2,295 </td></td> | Cycles: | 6,945 <th>CSI:</th> <td>2,295 </td> | CSI: | 2,295 | | | | | |
| Engine Type: | PW4462-J <th>AC Time at Installation:</th> <td>Hours: 54,157 Cycles: 18,406 <th>Date Eng. Install:</th> <td>18-Oct-2010 <th>Eng. Time at Installation:</th> <td>Hours: 42,959 Cycles: 6,945 <th>Date of Last SV:</th> <td>5/25/09 </td></td></td></td> | AC Time at Installation: | Hours: 54,157 Cycles: 18,406 <th>Date Eng. Install:</th> <td>18-Oct-2010 <th>Eng. Time at Installation:</th> <td>Hours: 42,959 Cycles: 6,945 <th>Date of Last SV:</th> <td>5/25/09 </td></td></td> | Date Eng. Install: | 18-Oct-2010 <th>Eng. Time at Installation:</th> <td>Hours: 42,959 Cycles: 6,945 <th>Date of Last SV:</th> <td>5/25/09 </td></td> | Eng. Time at Installation: | Hours: 42,959 Cycles: 6,945 <th>Date of Last SV:</th> <td>5/25/09 </td> | Date of Last SV: | 5/25/09 | | | | | |
| MSN: | P733715 <th>Hours:</th> <td>54,157 <th>Date Eng. Install:</th> <td>18-Oct-2010 <th>Hours:</th> <td>42,959 <th>TSI:</th> <td>12,407 </td></td></td></td> | Hours: | 54,157 <th>Date Eng. Install:</th> <td>18-Oct-2010 <th>Hours:</th> <td>42,959 <th>TSI:</th> <td>12,407 </td></td></td> | Date Eng. Install: | 18-Oct-2010 <th>Hours:</th> <td>42,959 <th>TSI:</th> <td>12,407 </td></td> | Hours: | 42,959 <th>TSI:</th> <td>12,407 </td> | TSI: | 12,407 | | | | | |
| Pos #: | 1 <th>Cycles:</th> <td>18,406 <th>Date Eng. Install:</th> <td>18-Oct-2010 <th>Cycles:</th> <td>6,945 <th>CSI:</th> <td>2,295 </td></td></td></td> | Cycles: | 18,406 <th>Date Eng. Install:</th> <td>18-Oct-2010 <th>Cycles:</th> <td>6,945 <th>CSI:</th> <td>2,295 </td></td></td> | Date Eng. Install: | 18-Oct-2010 <th>Cycles:</th> <td>6,945 <th>CSI:</th> <td>2,295 </td></td> | Cycles: | 6,945 <th>CSI:</th> <td>2,295 </td> | CSI: | 2,295 | | | | | |
| Eng. Total Hours: | 47,377 | Eng. Total Cycles: | 7,767 | As of Date: | 20-May-2012 | | | | | | | | | |
| FAA AD | TERM OR REP. | SUPERSEDED BY | AD DESCRIPTION | METHOD OF COMPLIANCE | INTERVALS | | | | LAST COMPLIANCE | | NEXT DUE | | TIME REMAINING | |
| CALNDR | DAY, MO or YR | HOURS | CYCLES | DATE | HR or CYC | DATE | HR or CYC | DAYS | HR or CYC | | | | | |
| 96-13-08 | N/A | | AFT CASCADE SPT FRAME ASSY | | | | | | | | | | | |
| 98-19-03 | TERM | | HPT ROTATING AIRSEALS | PERFORMED ON OCT 30, 1998 | | | | 30-Oct-98 | | TERM | TERM | TERM | TERM | |
| 98-23-08 | SUP | 2003-19-15 | | | | | | | | | | | | |
| 99-08-15 | SUP | 2000-12-02 | | | | | | | | | | | | |
| 99-17-16 | SUP | 2001-25-11 | | | | | | | | | | | | |
| 2000-12-02 | SUP | 2002-03-08 | | | | | | | | | | | | |
| 2000-22-01 | SUP | 2001-15-12 | | | | | | | | | | | | |
| 2000-25-06 | SUP | 2001-05-07 | | | | | | | | | | | | |
| 2001-05-07 | TERM | | LPT 4TH STG AIRSEAL | C/W PER SRT AD STATUS DATED 06/03/03 | | | | 26-Nov-04 | | TERM | TERM | TERM | TERM | |
| 2001-08-52 | SUP | 2001-09-07 | | | | | | | | | | | | |
| 2001-09-07 | SUP | 2001-15-12 | | | | | | | | | | | | |
| 2001-15-12 | SUP | 2001-25-11 | | | | | | | | | | | | |

| ENGINE AD STATUS | | | | | REPORT PREPARED BY: | | | CURRENT TAT: | | | | | |
|--|---------------------------|--------------------|--|--|------------------------|--------------------|---------------------------|----------------------|-----------|-----------|-------|----------------|-------|
| CURRENT/LAST OPERATOR: WORLD AIRWAYS, INC. | | | | | Mechanic Palmeri | | | 58,475 | | | | | |
| | | | | | REPORT DATE: 21-May-12 | | | CURRENT TACI: 11,228 | | | | | |
| CURRENT LOCATION: OFF-WING | | COMMENTS: | | | ENGINE TYPE: FW462 | | CURRENT DATE: 20-May-2012 | | | | | | |
| AIRCRAFT TYPE: MD-11 | Config: | PAX | Yr Mfg/Agg | ASSIGNED ENGINE SN: | | | Pos # 1: P733715 | | | | | | |
| SERIAL NUMBER: 48437 | Line #: | 506 | 1992 | | | | Pos # 2: | | | Pos # 3: | | | |
| REGISTRATION #: N172WA | Ver #: | - | 20 YRS | | | | ARU: | | | | | | |
| Engine Type: PW462-3 | AC Times at Installation: | Date Eng. Instl'd: | Eng. Times at Installation: | Date of Last SV: | 5/28/08 | Reg. Total Hours: | 47,277 | | | | | | |
| BSN: P733715 | Hours: 54,157 | 18-Oct-2010 | Hours: 42,959 | TSH: 12,407 | | Reg. Total Cycles: | 7,767 | | | | | | |
| Pos #: 1 | Cycles: 10,406 | | Cycles: 6,945 | CSL: 2,295 | | As of Date: | 20-May-2012 | | | | | | |
| FAA AD | TERM OR REF | SUPERSEDED BY | AD DESCRIPTION | METHOD OF COMPLIANCE | INTERVALS | | | LAST COMPLIANCE | | NEXT DUE | | TIME REMAINING | |
| | | | | | CALNDR | DAY MO of YR | HOURS | CYCLES | DATE | HR or CYC | DATE | HR or CYC | DATE |
| 2001-20-13 | SUP | 2002-12-15 | | | | | | | | | | | |
| 2001-25-11 | SUP | 2002-21-10 | | | | | | | | | | | |
| 2002-03-08 | SUP | 2005-25-09 | | | | | | | | | | | |
| 2002-12-15 | REP | | FRONT DRUM ROTORS | C/W SB A 72-722R1 ON 06/04/08 PER SRT AD STATUS DATED 06/03/08 | | | 2200 | 05-Jan-08 | 6,945 | | 9,145 | | 1,378 |
| 2002-14-10 | TERM | | IDG WIRE HARNESS | C/W PER SRT AD STATUS DATED 06/03/08 | | | | | | TERM | TERM | TERM | TERM |
| 2002-21-10 | SUP | 2003-11-18 | | | | | | | | | | | |
| 2003-11-18 | SUP | 2001-19-15 | | | | | | | | | | | |
| 2003-19-15 | TERM | | SB 72-757R1 - RCC MOD | C/W PER SRT AD STATUS DATED 06/03/08 | | | | 26-Nov-04 | TEC. 5472 | TERM | TERM | TERM | TERM |
| 2003-03-06 | TERM | | REPLACE P/N 113286 THAT CONNECTS OIL PRESS TRX TO MAIN OIL CIRCUIT WITH 221-5319-501 | C/W PER SRT AD STATUS DATED 06/03/08 | | | | 13-Mar-03 | | TERM | TERM | TERM | TERM |

| ENGINE AD STATUS | | | | | REPORT PREPARED BY: | | | CURRENT TAT: | | 58,475 | | | | |
|--|---------------|---------------------------|---|--|-----------------------------|---------------|------------------|------------------------------|-----------------------|-------------|-------------|-----------|----------------|-----------|
| CURRENT/LAST OPERATOR: WORLD AIRWAYS, INC. | | | | | Melanie Palmer | | | CURRENT TAC: | | 11,228 | | | | |
| | | | | | REPORT DATE: 21-May-12 | | | CURRENT DATE: | | 20-May-2012 | | | | |
| CURRENT LOCATION: OFF-WING | | | | | COMMENTS: | | | ENGINE TYPE: | | PW4462 | | | | |
| AIRCRAFT TYPE: | MD-11 | Config.: | PAX | Yr Mfg/Age | | | | FACTORY ASSIGNED ENGINE S/N: | | | | | | |
| SERIAL NUMBER: | 48437 | Line #: | 506 | 1992 | | | | Pos # 1: | P733715 | Pos # 3: | | | | |
| REGISTRATION #: | N72WA | Van #: | | 20 YRS | | | | Pos # 2: | APU | | | | | |
| Engine Type: | PW4462-J | AC Times at Installation: | | Date Eng. Install: | Eng. Times at Installation: | | Date of Last SV: | SD208 | Eng. Total Hours: | | 47,277 | | | |
| ESN: | P733715 | Hours: | 54,157 | 18-Oct-2010 | Hours: | 42,959 | TSI: | 12,407 | Eng. Total Cycles: | | 7,767 | | | |
| Pos #: | 1 | Cycles: | 10,406 | | Cycles: | 6,945 | CSI: | 2,295 | As of Date: | | 20-May-2012 | | | |
| PAA AD | TERM, OR REF. | SUPERSEDED BY | AD DESCRIPTION | METHOD OF COMPLIANCE | INTERVALS | | | | LAST COMPLIANCE | | NEXT DUE | | TIME REMAINING | |
| | | | | | CALNDR | DAY, MO or YR | HOURS | CYCLES | DATE | HR or CYC | DATE | HR or CYC | DAYS | HR or CYC |
| 2005-25-09 | TERM | | REV. MFG TIME LIMITS MANUAL ENHANCED DSP OF CRITICAL ROTATING PARTS @ OH | INCORP | | | | | | | TERM | TERM | TERM | TERM |
| | REF | | DSP OF CRITICAL LIFE-LIMITED PARTS | NEXT PPE | | | | | | | PPE | PPE | PPE | PPE |
| 2009-24-13 | TERM | | ELECTRONIC ENGINE CONTROLS | ACCOMPLISHED IAW FCD 08-73-14 LP 30486809M | SB 73-214 | | | | | | TERM | TERM | TERM | TERM |
| | OPEN | | REPLACE PER GROUP SCHEDULING | GROUP 3 P/N 791100-6-110, S/N C94062358 INSTALLED | SB 73-216 | | | | INSTALLED ON 03/06/11 | | 8-Jul-15 | PPE | PPE | PPE |
| 2010-18-13 | OPEN | | DETECT CRACKS BY THE LOCKING AND LOADING SLOTS OF THE HPC DRUM ROTOR DISK ASSEMBLY | ACCOMPLISH DURING SROP VISITS WHEN ANY OF THE 13, 14, OR 15 STO HPC BLADES ARE REMOVED | | | | | | | OPEN | OPEN | OPEN | OPEN |
| 2010-24-09 | OPEN | | One-time visual inspection of the No. 3 bearing oil pressure tube, part number (P/N) 517041-01, P/N 503604-01, or P/N 503924-01 | Tubes that are found cracked or repaired must be removed from service. This AD also prohibits repaired tubes from being installed. | | | | | | | OPEN | OPEN | OPEN | OPEN |

| ENGINE AD STATUS | | | | | | REPORT PREPARED BY: Melanie Palmeri | | | CURRENT TAT: 58,475 | | | | | |
|--|---------------|---------------------------|--|--|-----------|--|-------|--------------------------|---------------------------|---|----------|-----------|----------------|-----------|
| CURRENT/LAST OPERATOR: WORLD AIRWAYS, INC. | | | | | | REPORT DATE: 21-May-12 | | | CURRENT TAC: 11,228 | | | | | |
| CURRENT LOCATION: OFF-WING | | | | | | COMMENTS | | | CURRENT DATE: 20-May-2012 | | | | | |
| AIRCRAFT TYPE: MD-11 | | Config: PAX | | Yr Mfg/Age | | ENGINE TYPE: PW446J | | | ASSIGNED ENGINE S/N: | | | | | |
| SERIAL NUMBER: 48437 | | Line #: 506 | | 1992 | | Pos # 1: P733715 | | Pos # 3: | | APU: | | | | |
| REGISTRATION #: N372WA | | Var. #: | | 20 YRS | | Pos # 2: | | | | | | | | |
| Engine Type: FW446J-3 | | AC Times at Installation: | | Date Req. Install: | | Eng. Times at Installation: | | Date of Last SV: 5/23/05 | | Eng. Total Hours: 47,277 | | | | |
| ESN: P733715 | | Hours: 54,157 | | 18-Oct-2010 | | Hours: 41,959 | | TSI: 12,607 | | Eng. Total Cycles: 7,767 | | | | |
| Pos #: 1 | | Cycles: 10,406 | | | | Cycles: 6,945 | | CSI: 2,295 | | As of Date: 20-May-2012 | | | | |
| FAA AD | TERM. OR REF. | SUPERSEDED BY | AD DESCRIPTION | METHOD OF COMPLIANCE | INTERVALS | | | | LAST COMPLIANCE | | NEXT DUE | | TIME REMAINING | |
| | | | | | CALENDAR | DAY, MO OF YR | HOURS | CYCLES | DATE | HR or CYC | DATE | HR or CYC | DAYS | HR or CYC |
| 2010-34-14 | OPEN | | HPC 10TH STAGE DISKS | INSPECT PRIOR TO 7200 CYC SINCE INCORPORATION OF SB 72-768 OR 72-757 OR WITHIN 1000 CYC AFTER EFF DATE OF AD WHICHEVER IS LATER | | | CYC | 7200 | 26-Nov-04 | 5,472 | | 12,672 | | 4,905 |
| 2011-25-09 | INC | EFF DATE 01/16/12 | HPT STG 1 & 2 AIRSEALS AND RINGS | REMOVE AT NEXT PIECE-PART EXPOSURE AFTER THE EFF DATE OF THIS AD OR BEFORE ACCUMULATING THE NUMBER OF CYCLES LISTED IN TABLE 1, 2 & 3 OF THIS AD, WHICHEVER OCCURS LATER | | | | | 10-Jan-12 | SEE CURRENT LLP SHEET FOR TOTAL CYCLES ON PIECE PARTS | | | | |
| 2012-04-04 | OPEN | EFF DATE 04/05/12 | TO PREVENT ENGINE OVERSPEED WHICH COULD RESULT IN AN UNCONTAINED ENGINE FAILURE AND DAMAGE TO THE AIRPLANE | REPLACE FMU PWS 53T333 (113 501000-1), 53T423 (113 601000-2), OR 50U150 (113 601000-3) INSTALLED AT THE NEXT SHOP VISIT AFTER THE EFFECTIVE DATE OF THIS AD | A73-220 | | | | | | OPEN | OPEN | OPEN | OPEN |

x *Caroline Artman* 05/23/12
 Caroline Artman, Mgr. QC Records Dept. Date

Engine Acc. Inventory List ESN: 733715

6/22/2012

| Description | Vendor Part Number | PW Part Number | Serial Number | Comments |
|--|--------------------|----------------|---------------|-----------|
| Transducer, Motional Pickup | 9045705-2 | 52A193 | 149354 | |
| Actuator- Compressor Bleed 2.5 | 829742-1 L1 | 52G337 | NVS | INSTALLED |
| Stator Vane Actuator | 818802-1 | 65H267 | F40370 | |
| EEC (Electronic Engine Control) | 791100-6-110 | 54D249 | 96062258 | |
| EEC Programming Plug | N/A | 51D411 CL11 | CSGCAT8412 | |
| Cable, Ignition Exciter | 10-609660-9 | 50U683 | 5223M | |
| Cable, Ignition Exciter | 10-609660-9 | 50U683 | 4499M | |
| Fuel Distribution Valve | 788366-2 | 53T285 | F24617 | |
| Exciter, Ignition | 10-621630-1 | 50T241 | NVS | INSTALLED |
| Exciter, Ignition | 10-621630-1 | 50T241 | NVS | INSTALLED |
| Fuel/Oil Cooler, IDG | 47111-1204 | 59H669 | TR8425 | |
| Fuel/Oil Cooler, IDG-Bypass Valve | 3831147-101 | 51H336 | 57386 | |
| HPC Flow Cont. Valve (LH) | N/A | ---- | | MISSING |
| HPC Flow Cont. Valve (RH) | N/A | ---- | | MISSING |
| Turbine Air Shutoff Valve Phase 3 (RH) | 20P78-6 | 54H488 | NVS | INSTALLED |
| 2.9 Bleed Valve (LH) | 1115V0700-9 | 56H247 | 5305 | |
| 2.9 Bleed Valve (RH) | 1115V0700-9 | 56H247 | 4895C | |
| EEC Thermocouple TT3.5 | 23504-001 | HAC18951 | 74187 | |
| TT4.95 Box and Cable | HAD20458 | 50P281 | CL0345 | |
| TT4.95 Probe | HAD18540 | 50P109 | NVS | INSTALLED |
| TT4.95 Probe | HAD18540 | 50P109 | NVS | INSTALLED |
| TT4.95 Probe | HAD18540 | 50P109 | NVS | INSTALLED |
| TT4.95 Probe | HAD18540 | 50P109 | NVS | INSTALLED |
| EEC Generator Rotor | 430071 | 52R003 | NVS | INSTALLED |
| EEC Generator Stator | 430070-2 | 52R026 | 0562M | |
| Fuel Pump | 825501-12 | 58T229 | CSGCA08531 | |
| Fuel Metering Unit | 801000-3 | 60U160 | F18342 | |
| Fuel Bypass Valve | 813520-1 | 58T798 | F32936 | |
| Fuel Differential Press. Swth | 52D395 | 51U711 | CSGCBO4590 | |
| EEC Fuel Temp. Probe | HAD22501 | 53T903 | NVS | INSTALLED |
| Solenoid IDG A/O Cooling (1h) | 1109V0300-2 | 52G225 | NVS | INSTALLED |

ESN 733715 QEC INVENTORY



Engine Acc. Inventory List ESN: 733715

6/22/2012

| Description | Vendor Part Number | PW Part Number | Serial Number | Comments |
|--|--------------------|----------------|---------------|-----------|
| Solenoid TVBCA & Heat Air | 1108V0100-2 | 55H304 | NVS | |
| Pneumatic Relay Valve (5h) | 07P95-8 | 52G435 | NVS | |
| Solenoid 2.9 Bleed Valve (5h) | 04P23-12 | 52G515 | NVS | |
| Turbine Cooling Actuator (TCC) | 5830201-111 | 58H035 | 0310A | |
| Switch TVBC | N/A | --- | | |
| TVBC Valve (RH) Turbine Cooling | 1110V0500-6 | 50S018 | 2624C | |
| TVBC Valve (LH) Turbine Cooling | 1110V0500-6 | 53H629 | 166 | |
| Bearing 3 Breather Valve | N/A | --- | | |
| LPT Case cooling Valve | 5830202-108 | 56T203 | 1638 | |
| HPT Case cooling Valve | 5830203-104 | 52T089 | 664 | |
| Turbine Cooling Actuator Cable | 1805149-002 | 59T756 | 2455 | |
| IDG Air/Oil Heat Exhr (RH) | 12698-000 | 50G479 | NVS | INSTALLED |
| IDG Air/Oil Heat Exhr Valve | 798850-2 | 51G218 | NVS | INSTALLED |
| ENG. Air/Oil Heat Exhr (LH) | 15622-000 | 51G959 | NVS | INSTALLED |
| ENG. Air/Oil Heat Exhr Valve | 786399-6 | 52G217 | NVS | INSTALLED |
| Wiring Harness-ECC (W1) | 420437 | 57T795-002 | NVS | INSTALLED |
| Wiring Harness-ECC (W2) | 420438 | 57T797-002 | NVS | INSTALLED |
| Wiring Harness-ECC (W3) | 420630 | 58T818 | NVS | INSTALLED |
| Wiring Harness-ECC (W4) | 420745 | 59T352 | NVS | INSTALLED |
| Wiring Harness-ECC (W5) | 420750 | 59T357 | NVS | INSTALLED |
| Wiring Harness-ECC (W6) | 421273 | 52U141 | NVS | INSTALLED |
| Supplemental Control Unit (SCU) | 2118960-004 | --- | ESF0836 | |
| Supplemental Control Unit Program Plug | N/A | 53T733 | CSGAT8412 | |
| Main Oil Pump | 5008437-6 | 51R159 | 899 | |
| Oil Press. Switch | 21SN04-460 | 52U612 | | |
| | | | | |
| | | | | |
| | | | | |
| | | | | |
| | | | | |
| | | | | |
| | | | | |

ESN 733715 QEC INVENTORY



PRATT WHITNEY ENGINE LEASING

Southern California Aviation
 18438 Readiness St
 Victorville, CA 92394

Engine Acc. Inventory List ESN: 733715

6/22/2012

| Description | Vendor Part Number | PW Part Number | Serial Number | Comments |
|---------------------------------------|--------------------|----------------|---------------|-----------|
| FWD Engine Mount Assy. | 2211-4005-501 | 310T4020-27 | 141 | |
| AFT Engine Mount Assy. | 221-0263-503 | 310U4020-6 | EQUI-10023710 | |
| Check Valve 8th Stage HPSO Valve (RH) | 3202176-3 | 802170-10 | 4845 | |
| Check Valve 8th Stage HPSO Valve (LH) | 3202176-3 | 802170-10 | 997C | |
| Exhaust Nozzle | 221-0051-533 | 314T3310-5 | | MISSING |
| Exhaust Plug | --- | 314T4320-19 | | MISSING |
| Fuel Flow Xmr | 08748-9-217-30 | 8TJ124GGN3 | 2967 | |
| Fuel Press. Xtrr. | 221D4033-501 | 418-06124 | 9925084 | |
| Hydraulic Pump AFT | 887673 | 350880-8 | | MISSING |
| Hydraulic Pump FWD | 887673 | 350880-6 | | MISSING |
| Intregated Drive Generator | --- | 745329B | | MISSING |
| Intregated Drive Generator Adapter | 99167-749865 | 749865 | 176 | |
| Oil Low Press. Swth | --- | S332T004-35 | P142 | |
| Oil Press. Xtrr. | 221D4033-501 | 418-06124 | 9418003 | |
| Oil Quantity Xtrr. | --- | 77-109-13 | NVS | INSTALLED |
| Press. Regulating Valve Controller | --- | 792755-16 | N/A | N/A |
| Starter (Pneumatic) | --- | 774860A9 | | MISSING |
| Starter Conl. Valve | 775538-13 | 811390-4 | | MISSING |
| Accelerometer | 144-151-000 | S332T304-1 | 1101-93/01 | |



ESN 733715 QEC INVENTORY

| | | | | | | | | |
|---|-----------------|---|---|---|---|---|---|--|
| 1 Approving Competent Authority / Country: FOCA / Switzerland | | AUTHORISED RELEASE CERTIFICATE EASA FORM 1 | | | | | 2 Form Tracking Number TT-004802 | |
| 4 Organisation Name and Address: SR Technics  | | | SR Technics Switzerland Ltd. CH-8058 Zurich-Airport, Switzerland | | | 5 Work Order/Contract/Invoice 290960 | | |
| 6 Item | 7 Description | 8 Part No. | 9 Eligibility* | 10 Qty | 11 Serial/Batch No. | 12 Status/Work | | |
| 1 | PRATT & WHITNEY | PW4462-3 | MD11 | 1 | P733715 | INSPECTED | | |
| 13 Remarks | | | | | | Return to Service in accordance with 14 CFR 43.9 | | |
| <p>THE ENGINE SERVICE INSPECTION AND VIDEO BORESCOPE INSPECTION HAS BEEN PERFORMED. THE ENGINE HAS BEEN TESTED IN ACCORDANCE WITH PWA ENGINE MANUAL.</p> <p>THE ENGINE IS PRESERVED FOR 60 DAYS +</p> <p>ENGINE TT: 42959 TC: 6945</p> <p>REF.DOC.: 50A822 REV.: 84 MODIF.: SB PW4ENG A75-51.14</p> | | | | | | <p>Certifies that unless otherwise specified in Block 13, the work identified in Block 12 and described in Block 13 was accomplished in accordance with Title 14, Code of Federal Regulations, part 43 and in respect to that work, the items are approved for return to service.</p> <p>FAA Certificate No.: SWRY322I</p> <p>Name: R. Wüthrich 495 026 Date (DD/MMM/YYYY): 25 MAR 2008 Signature: </p> | | |
| <input type="checkbox"/> Certifies that the items identified above were manufactured in conformity to approved design data and are in condition for safe operation. <input type="checkbox"/> non-approved design data specified in block 13 | | 19 (X) EASA Part 145.A.50 Release to Service | | | (X) other regulations specified in block 13 | | | |
| 15 Authorized Signature | | 16 Approval/Authorisation Number | | 20 Authorized Signature: | | 21 Certificate/Approval Ref. No. | | |
| | | | |  | | CH.145.0200 | | |
| 17 Name | | 18 Date (DD/MMM/YYYY) | | 22 Name & Authorisation Number | | 23 Date (DD/MMM/YYYY) | | |
| | | | | R. Wüthrich 495 026 | | 25 MAR 2008 | | |

EASA Form 1 / FAA 8130-3 SRT (Issue 2)

* At the time of installation, re-check eligibility with up-to-date and applicable installation data

USER/INSTALLER RESPONSIBILITIES

- NOTE: 1 It is important to understand that the existence of the document alone does not automatically constitute authority to install the part/component/assembly.
- 2 Where the user / installer works in accordance with the national regulations of an Airworthiness Authority different from the Airworthiness Authority specified in block 1 it is essential that the user / installer ensures that his/her Airworthiness Authority accepts parts/components/assemblies from the Airworthiness Authority specified in block 1.
- 3 Statements 14 and 19 do not constitute installation certification. In all cases the aircraft maintenance record must contain an installation certification issued in accordance with the national regulations by the user / installer before the aircraft may be flown.

MODIFIKATIONSSTATUS FÜR TWSN=733715
 E.A670689.SASPROG(PWA) HCD=4 TWTP= 9
 :S=IA-STATUS D=UNDER DEVELOPMENT C=CANCELLED *=CLOSED

11:32 Monday, December 8, 1997

| OBS | DOKNR | IASANS | IS | S | AT | MCD | IDN | TEXT | ATA |
|-----|-----------------|--------|----|---|----|-----|--------|---|-------|
| 1 | PW4ENG72-532 | 224700 | * | . | | | | INSPECT HPC 5TH AND 6TH STAGE SYNC RINGS FOR CORRECT INSTALLATION | 72-30 |
| 2 | PW4ENGA72-532.1 | 216109 | | | | 35 | 599635 | HPC, INSP. OF SYNCHRONIZING RING PLATES | |
| 3 | PW4ENGA75-051 | | | | O | ENG | | INSPECT/REPLACE OR ADJUST VARIOUS CLAMPS/BRACKETS/TUBES | 72-00 |
| 4 | PW4ENGA75-051.3 | 069599 | * | | | | | EXTERNAL TUBES & HARDWARE- INSPECTION OF | |
| 5 | PW4ENGA75-051.9 | 069487 | | | | 35 | 599635 | INSPECTION OF EXTERNAL HARDWARE | |
| 6 | PW4ENGA75-051.9 | 069487 | | | | 38 | 599643 | INSPECTION OF EXTERNAL HARDWARE | |
| 7 | PW4ENGA75-051.9 | 069487 | | | | 41 | 599636 | INSPECTION OF EXTERNAL HARDWARE | |
| 8 | PW4ENGA75-051.9 | 069487 | | | | 82 | 599646 | INSPECTION OF EXTERNAL HARDWARE | |
| 9 | PW4ENG72-485 | 069938 | | | V | 35 | 599635 | INCORP FINAL CONFIGURATION HPC 5TH STG SHROUD SET P/N 55H255-01 | 72-30 |
| 10 | PW4EN372-485 | 069938 | | | V | 35 | 599635 | INCORP FINAL CONFIGURATION HPC 6/7TH STG SHROUD SET P/N 54H086-01 | 72-30 |
| 11 | PW4ENG72-492 | | | | V | ENG | | INCORP NEW GEARBOX MOUNTING BRACKET SPACERS P/N 70R726 | 72-30 |
| 12 | PW4ENG72-492.1 | 216326 | | | | 38 | 599643 | HPC. SPACER FOR GEARBOX MOUNTING BRACKET | |
| 13 | PW4ENG72-497 | NO IA | | | V | | | INCORP NEW #2 BEARING SEAL ASSY P/N 51D765 | 72-30 |
| 14 | PW4ENG72-502 | | | | V | ENG | | INCORP NEW HPC BRUSH SEAL SUPPORT ASSEMBLY P/N 50J841-01 | 72-40 |
| 15 | PW4ENG72-502.2 | 216304 | | | | | | HPC, REPL.OF EXIT BRUSH SEAL, PROD-PH-III | |
| 16 | PW4ENG72-503 | | | | V | HPC | | INCORP NEW HPC 5TH STAGE BLADES P/N 55H005 | 72-30 |
| 17 | PW4ENG72-503.1 | 216014 | C | | | 35 | 599635 | HPC, 5TH ST BLADE - REPLACEMENT OR MODI. | |
| 18 | PW4ENG72-506 | 216068 | | | V | 38 | 599643 | INCORP NUT/WASHER P/N 53H146 AT THE STATOR VANE LINKAGE CONNECTIONS | 72-30 |
| 19 | PW4ENG72-507 | 221784 | P | | V | | | INCORP ADDITIONAL CLAMPS TO SUPPORT THE LP09 ANGLE G/BOX PRESS TUBE | 72-00 |
| 20 | PW4ENG72-507 | 216023 | | | V | 82 | 599646 | INCORP ADDITIONAL CLAMPS TO SUPPORT THE LP09 ANGLE G/BOX PRESS TUBE | 72-00 |
| 21 | PW4ENG72-508 | | | | V | ENG | | INCORP NEW BRACKET P/N 59T691-01 AND BOLTS TO SUPPORT THE LP35 TUBE | 72-60 |
| 22 | PW4ENG72-508.1 | 216024 | | | | 82 | 599646 | MGB:LP35 TUBE ATTACHM.,NEW BRACKET+BOLTS | |
| 23 | PW4ENG72-511 | 216322 | | | V | | | INCORP NEW LPT 6TH STAGE VANE CLUSTERS P/N 52N076-01 | 72-50 |
| 24 | PW4ENG72-513 | 216138 | | | V | 53 | 599639 | INCORP NEW LPT 3RD STAGE DUCT SEGMENTS AND SEALING RING SUPPORT | 72-50 |
| 25 | PW4ENG72-523 | 216083 | | | V | 34 | 599634 | INCORP NEW ANGLE GEARBOX P/N 51G000 | 72-60 |
| 26 | PW4ENG72-523 | 216083 | | | V | 62 | 599642 | INCORP NEW UPPER TOWERSHAFT ROLLER BEARING P/N 51G986 | 72-60 |
| 27 | PW4ENG72-523 | 216395 | | | V | 62 | 599642 | INCORP NEW ANGLE GEARBOX P/N 51G000 | 72-60 |
| 28 | PW4ENG72-523 | 216395 | | | V | 62 | 599642 | INCORP NEW UPPER TOWERSHAFT BALL BEARING P/N 51G990 | 72-60 |
| 29 | PW4ENG72-523 | 216395 | | | V | 62 | 599642 | INCORP NEW UPPER TOWERSHAFT ROLLER BEARING P/N 51G986 | 72-60 |
| 30 | PW4ENG72-524 | | | | V | MGB | | INCORP NEW MAIN OIL FILTER HOUSING ASSY P/N 70R914 | 72-60 |
| 31 | PW4ENG72-524.2 | 216094 | | | | 61 | 599641 | MGB-OIL FILTER HOUSING-MODIF.WITH STUDS | |
| 32 | PW4ENG72-525 | | | | V | MGB | | INCORP NEW MAIN OIL FILTER HOUSING ASSY P/N 70R647 | 72-60 |
| 33 | PW4ENG72-525.5 | 216108 | | | | 61 | 599641 | OIL FILTER HOUS.:NEW DUAL ELEMENT FILTER | |
| 34 | PW4ENG72-527 | | | | V | HPC | | INCORP NEW HPC 5TH STAGE UPPER SYNC RING HALF P/N 55H626-01 | 72-30 |
| 35 | PW4ENG72-527 | | | | V | HPC | | INCORP NEW HPC 6TH STAGE UPPER SYNC RING HALF P/N 55H635-01 | 72-30 |
| 36 | PW4ENG72-527.1 | 216139 | | | | 35 | 599635 | HPC,LOCATING PIN FOR CORRECT INST.OF PLT | |
| 37 | PW4ENG72-528 | 216305 | | | V | | | INCORPORATE NEW HPC TIEROD RETAINING CLIPS P/N 55H601 | 72-30 |
| 38 | PW4ENG72-529 | NO IA | | | V | | | INCORP NEW HPT FLANGE SPACER ASSY P/N 50L923-01 | 72-50 |
| 39 | PW4ENG72-531 | 216095 | | | V | 61 | 599641 | INCORP NEW GEARBOX MAIN OIL BOX PUMP DRIVE BEARING | 72-60 |
| 40 | PW4ENG72-533 | 216308 | | | V | 52 | 599638 | INCORP NEW SPRING GASKET P/N 50L929 | 72-50 |
| 41 | PW4ENG72-534 | 216166 | | | V | 35 | 599635 | INCORP NEW STATOR VANE ACTUATOR BRACKET UPPER FRONT STUD P/N 54H216 | 72-30 |
| 42 | PW4ENG72-534 | 216166 | | | V | 38 | 599643 | INCORP NEW HPC 5TH STAGE SYNC RING CLEVIS P/N 55H372 | 72-30 |
| 43 | PW4ENG72-534 | 216166 | | | V | 38 | 599643 | INCORP NEW STATOR VANE ACTUATOR BRACKET UPPER FRONT STUD P/N 54H216 | 72-30 |
| 44 | PW4ENG72-534 | 216166 | | | V | 38 | 599643 | INCORP NEW STATOR VANE ACTUATOR BRACKET UPPER REAR STUD P/N 54H149 | 72-30 |
| 45 | PW4ENG72-535 | 216143 | | | V | 33 | 599633 | INCORP NEW 2.5 BLEED VALVE LINKAGE BELL CRANK AND PIVOT PIN | 72-30 |
| 46 | PW4ENG72-535 | 216143 | | | V | 82 | 599646 | INCORP NEW 2.5 BLEED VALVE LINKAGE BELL CRANK AND PIVOT PIN | 72-30 |
| 47 | PW4ENG72-537 | | | | V | HPT | | INCORP NEW HPT 2ND STAGE HUB P/N 52L802 | 72-50 |
| 48 | PW4ENG72-537.1 | 216309 | C | | | | | TURBINE,HIGH PRESSURE(HPT) | |
| 49 | PW4ENG72-538 | 069707 | | | U | 61 | 599641 | INCORP NEW MAIN GEARBOX CENTER MOUNT LUG P/N 71R018 | 72-60 |
| 50 | PW4ENG72-539 | NO IA | | | V | | | INCORP NEW LPT 5TH STAGE HUB P/N 51N505 | 72-50 |

MODIFIKATIONSSTATUS FÜR TWSN=733715
 E.A670689.SASPROG(PWA) HCD=4 TWYTP= 9
 IS=IA-STATUS D=UNDER DEVELOPMENT C=CANCELLED *=-CLOSED

11:32 Monday, December 8, 1997

| OBS | DOKNR | IABNR | IS | STAT | MOD | IDN | TEXT | ATA |
|-----|----------------|--------|----|------|-----|--------|---|-------|
| 51 | PW4ENG72-541 | 216323 | | / | 52 | 599638 | INCORP NEW HPT COUNTERWEIGHTS P/N 50L924 | 72-50 |
| 52 | PW4ENG72-542 | 216190 | | V | 51 | 599637 | INCORP NEW COMBUSTION CHAMBER GUIDES P/N 51K210-01 | 72-50 |
| 53 | PW4ENG72-544 | | | V | | LPC | INCORP NEW LPC 1.6 STAGE BLADES P/N 50B426 | 72-30 |
| 54 | PW4ENG72-544.1 | 216172 | | V | 31 | 599631 | LPC, 1.6 BLD WITH BEAD PEENED AIRFOIL | |
| 55 | PW4ENG72-545 | NO IA | | V | | | INCORP NEW GEARBOX DRIVE SHAFT HOUSING ASSEMBLY P/N 70R911 | 72-60 |
| 56 | PW4ENG72-547 | 216307 | | V | | | INCORP NEW INTERMEDIATE CASE SOLENOID VALVE BRACKET P/N 52G155-01 | 72-30 |
| 57 | PW4ENG72-548 | NO IA | | V | | | INCORP NEW LIGHTER WEIGHT COMPRESSOR INTERMEDIATE CASE ASSEMBLY | 72-30 |
| 58 | PW4ENG72-550 | | | V | | HPC | INCORP NEW HPC 11TH STAGE SHROUD SET P/N 56H491-01 | 72-30 |
| 59 | PW4ENG72-550 | | | V | | HPC | INCORP NEW HPC 12TH STAGE SHROUD SET P/N 56H492-01 | 72-30 |
| 60 | PW4ENG72-550 | | | V | | HPC | INCORP NEW HPC 13TH/14TH STAGE SHROUD SET P/N 56H493-01 | 72-30 |
| 61 | PW4ENG72-550 | | | V | | HPC | INCORP NEW HPC 9TH/10TH STAGE STATOR SET P/N 56H499-01 | 72-30 |
| 62 | PW4ENG72-550.3 | 216734 | | | | | HPC MODIF. INNER SHROUD W. INCREASED NOTCH | |
| 63 | PW4ENG72-552 | 216142 | | V | 41 | 599636 | INCORP NEW #3 BEARING FRONT AND REAR SEAL SEATS AND SEAL ASSEMBLIES | 72-41 |
| 64 | PW4ENG72-553 | 216310 | | V | 53 | 599639 | INCORP NEW 3RD STAGE LPT VANE RETAINING NUTS P/N 4301682 | 72-50 |
| 65 | PW4ENG73-145 | | | V | | ENG | INCORP NEW EEC/SCU W11 WIRING HARNESS P/N 58T428 | 73-00 |
| 66 | PW4ENG73-145.4 | 216124 | | | 76 | 599645 | W11 HARNESS ASSY. (SCU) MODI. CR REPL. | |
| 67 | PW4ENG73-148 | 224715 | P | V | | | INCORP W4 & W5 FMU WIRING HARNESSES WITH BACKSHELL CHAFE PROTECTION | 73-00 |
| 68 | PW4ENG73-148.1 | 216089 | | | 76 | 599645 | FMU CONNECTOR BACKSHELL MODI, W4P2, W5P1 | |
| 69 | PW4ENG73-152 | 216290 | | O | | | INSTRUCTIONS FOR THE REPAIR OF THE N1 SPEED TRANSDUCER | 73-00 |
| 70 | PW4ENG73-153 | NO IA | | U | | | INCORP NEW SUPPLEMENTAL CONTROL UNIT P/N 52D327 | 73-00 |
| 71 | PW4ENG73-155 | 216151 | | V | 82 | 599646 | INCORP NEW FUEL METERING UNIT P/N 50U150 | 73-00 |
| 72 | PW4ENG73-156 | NO IA | | V | | | INCORP NEW FUEL TEMP THERMOCOUPLE P/N 58T873 AND RELATED HARDWARE | 73-00 |
| 73 | PW4ENG75-108 | 216037 | | V | 82 | 599646 | INCORP NEW STATOR VANE ACTUATOR P/N 54H839 | 75-00 |
| 74 | PW4ENG75-108 | 216038 | | V | 82 | 599646 | INCORP NEW STATOR VANE ACTUATOR P/N 54H839 | 75-00 |
| 75 | PW4ENG75-108 | 216038 | | V | 82 | 599646 | INCORP NEW 2.5 BLEED ACTUATOR P/N 52G115 | 75-00 |
| 76 | PW4ENG75-109 | NO IA | | V | | | INCORP NEW TURBINE CASE COOLING MANIFOLDS P/N 57T571-01 & 59T036-01 | 75-00 |
| 77 | PW4ENG75-111 | NO IA | | V | | | INCORP NEW HPC BLEED AIR FILTER P/N 54H771 | 75-00 |
| 78 | PW4ENG75-113 | 216192 | | V | 82 | 599646 | INCORP NEW HPC STATOR VANE ACTUATOR P/N 55H786 | 75-00 |
| 79 | PW4ENG75-113 | 216193 | | V | 82 | 599646 | INCORP NEW HPC STATOR VANE ACTUATOR P/N 55H786 | 75-00 |
| 80 | PW4ENG75-113 | 216193 | | V | 82 | 599646 | INCORP NEW 2.5 BLEED ACTUATOR P/N 52G215 | 75-00 |
| 81 | PW4ENG79-069 | 069944 | | O | 82 | 599646 | INCORP 65 MICRON MAIN OIL FILTER ELEMENT OPTION P/N 792610 | 79-00 |
| 82 | PW4ENG79-073 | | | V | | MGB | INCORP NEW 65/150 MICRON DUAL MAIN OIL FILTER OPTION P/N 815316 | 79-00 |
| 83 | PW4ENG79-073.1 | 216075 | | | 82 | 599646 | INCORP OF 65/150 MY FILTER | |
| 84 | PW4ENG79-074 | 216160 | | V | 82 | 599646 | INCORP NEW OIL TANK HEATSHIELD BRACKET ASSEMBLY P/N 51R043-01 | 79-00 |



Aircraft Inspection & Management, LLC.

FAA CRS # BAIR305B / EASA 145.025B

Specializing Worldwide in
 Borescope Inspections Baro-Blending Top/Bottom Case Repairs Vibration Analysis Records Review
 8130-3 Dual Release Serviceable Tags Engine Preservation Equipment Rental/Leasing
 13100 N Tailwind Drive, Tucson, Arizona 85755 - Office (520) 399-8489 Fax (520) 579-8855
 AIMFAAMRO.COM FAA & EASA Certified Repair Station

| WORK ORDER FORM #1 | | | | | | | | | | | | | |
|---|---|---|-------------------------------------|--|----------------------------------|--------------------------|--------------------------|-------------------------------------|------------------------------------|-------------------------------------|-------------------------------------|--------------------------------------|--|
| Work Order # 12-05-22-01 | | Customer PO# | | Customer Name & Address: | | | | | | | | | |
| Aircraft Reg: | | Aircraft SN: | | World Airways, Inc. HLH Building 101 World Drive Peachtree City, GA 30269 | | | | | | | | | |
| Model/Part # PW4460 | | SN: 733715 | | Engine/Unit/Part Description: 1 x Engine | | | | | | | | | |
| NDT Method(s) Requested: | | | RT | UT | ET | PT | MT | VT | Location | Field | Base | Date: 5/23/2012 | Quantity: 1 |
| Receiving/Incoming Inspection Performed | | | <input type="checkbox"/> | <input type="checkbox"/> | <input type="checkbox"/> | <input type="checkbox"/> | <input type="checkbox"/> | <input checked="" type="checkbox"/> | Hidden Damage Inspection Performed | <input type="checkbox"/> | <input checked="" type="checkbox"/> | In Process Inspection Performed | <input type="checkbox"/> |
| YES | | | <input checked="" type="checkbox"/> | NO | Preliminary Inspection Performed | | YES | NO | AIM 1 INSP. | <input checked="" type="checkbox"/> | NO | Final Inspection Performed 5/25/2012 | <input checked="" type="checkbox"/> |
| NO | | | <input checked="" type="checkbox"/> | NO | NO | | NO | NO | NO | <input checked="" type="checkbox"/> | NO | YES | NO |
| Is this Form #1 a continuation page to account for additional discrepancies? | | | | | | | | | | | | <input type="checkbox"/> Yes | <input checked="" type="checkbox"/> No |
| Item# | Discrepancy or Task # | Corrective Action: | | | | | | | | | | Tech Signature | |
| 1 | Accomplish preservation to the fuel and oil system IAW MD11 AMM 72-00-09 Rev Nov, 2011. | Accomplished preservation to the fuel and oil system IAW MD11 AMM 72-00-09 Rev Nov, 2011. | | | | | | | | | | Insp Signature | |
| | | | | | | | | | | | | 5/25/2012 | |
| | | | | | | | | | | | | AIM 1 INSP. | |
| Item# | Discrepancy or Task # | Corrective Action: | | | | | | | | | | Tech Signature | |
| | | | | | | | | | | | | Insp Signature | |
| | | | | | | | | | | | | Tech Signature | |
| | | | | | | | | | | | | Insp Signature | |
| | | | | | | | | | | | | Tech Signature | |
| | | | | | | | | | | | | Insp Signature | |
| | | | | | | | | | | | | Tech Signature | |
| | | | | | | | | | | | | Insp Signature | |
| Was another Form #1 required for additional discrepancies not covered by this page? | | | | | | | | | | | | <input type="checkbox"/> Yes | <input checked="" type="checkbox"/> No |
| General Remarks: TT - 47,277:22 & TC - 7167 | | | | | | | | | | | | | |
| MAINTENANCE RELEASE | | | | | | | | | | | | | |
| The following item(s) <u>1</u> listed above were inspected in accordance with current Federal Aviation Regulations, and were approved for return to service. Pertinent details are on file at this repair station under the Work Order number listed above. | | | | | | | | | | | | | |
| Signature of Authorized individual | | | | | | | | | | Date May 25 th , 2012 | | | |

SHORT TERM TREND PLOT REPORT PART 1

AIRCRAFT OFF-WING ACFT TYPE XXXXXXXX

ENG POS 1 ENG S/N 733715

ENG TYPE PW4462(-3)

REPORT DATE 06NOV2012 PAGE 1

LAST DATA DATE 16MAY2012

ENG INST DATE 18OCT2010

VIB (H,L) UNITS

..0....2....4

WF (F),PCT

INIT 09NOV10

H2 (H),PCT

INIT 09NOV10

..4....5....6....7....8....9

..-2....-1....0....1....2....3

EGT (G),DEGC

INIT 09NOV10

H1 (L),PCT

INIT 09NOV10

T/O EGT MARGIN(E), DEGC

-20....0....20....40

..10....20....30....40....50....60

..-1....0....1....2....3

I (29.9)

I (1.1)

INITIAL

| INDIVIDUAL CRUISE POINTS | SMOOTHED DATA | | | | | | | | |
|--------------------------|---------------|----|---|----|---|-----|---|---|---|
| 25MAR12 | .# | . | g | . | . | +fL | . | H | / |
| 25MAR12 | .# | . | G | . | F | .L | . | H | / |
| 26MAR12 | .# | . | G | . | F | .L | h | . | / |
| 26MAR12 | /L | . | G | . | F | .L | . | H | / |
| 27MAR12 | .# | . | G | . | F | .L | . | H | / |
| 28MAR12 | .# | . | G | . | F | .L | . | H | / |
| 28MAR12 | .# | . | G | . | F | .L | . | H | / |
| 02APR12 | .# | . | G | f | . | . | . | H | / |
| 03APR12 | .# | . | G | . | F | .L | . | H | / |
| 03APR12 | .# | . | G | . | F | .L | . | H | / |
| 07APR12 | .# | . | G | . | F | .L | . | H | / |
| 07APR12 | .# | h | g | . | F | .L | . | H | / |
| 07APR12Q | .L | . | . | +g | . | +f | . | . | / |
| 08APR12 | .# | . | G | . | F | .L | . | H | / |
| 11APR12 | .# | . | G | . | F | .L | . | H | / |
| 12APR12 | .# | . | G | . | F | .L | . | H | / |
| 13APR12 | .# | . | G | . | F | .L | . | H | / |
| 16APR12 | .# | . | G | . | F | .L | . | H | / |
| 18APR12 | .# | . | G | . | F | .L | . | H | / |
| 18APR12 | .# | . | G | . | F | .L | . | H | / |
| 19APR12 | .# | . | G | . | F | .L | h | . | / |
| 20APR12Q | .# | . | G | . | F | .L | . | H | / |
| 21APR12 | .# | . | G | . | F | .L | . | H | / |
| 21APR12 | .# | . | G | . | F | .L | . | H | / |
| 22APR12 | .# | . | G | . | F | .L | . | H | / |
| 24APR12 | .# | . | g | . | F | .L | . | H | / |
| 25APR12 | .# | . | G | . | F | .L | . | H | / |
| 25APR12 | .# | . | G | . | F | .L | . | H | / |
| 26APR12Q | .# | . | G | -f | . | .L | . | H | / |
| 26APR12Q | .# | . | G | -f | . | .L | . | H | / |
| 27APR12 | .# | . | G | . | F | .L | . | H | / |
| 28APR12 | .# | . | G | . | F | .L | . | H | / |
| 28APR12 | .# | . | G | . | F | .L | . | H | / |
| 01MAY12 | .# | . | G | . | F | .L | . | H | / |
| 02MAY12 | .# | . | G | . | F | .L | . | H | / |
| 04MAY12 | .# | . | G | . | F | .L | h | . | / |
| 04MAY12 | .# | . | G | . | F | .L | . | H | / |
| 06MAY12 | .# | . | G | . | F | .L | . | H | / |
| 07MAY12 | .# | . | g | -f | . | .L | . | H | / |
| 08MAY12 | .# | . | G | -f | . | . | . | H | / |
| 08MAY12 | .# | . | G | . | F | .L | . | H | / |
| 09MAY12 | .# | . | G | . | F | .L | h | . | / |
| 09MAY12 | .# | . | G | . | F | .L | . | H | / |
| 10MAY12 | .# | -g | . | -f | . | . | h | . | / |
| 11MAY12 | .# | . | . | . | F | .L | . | H | / |
| 13MAY12 | .# | . | G | g | . | +f | . | . | / |
| 14MAY12Q | .H | 1 | . | G | F | .L | . | H | / |
| 15MAY12 | .# | . | G | . | F | .L | . | H | / |
| 15MAY12 | .# | . | G | -f | . | .L | . | H | / |
| 16MAY12 | .# | . | G | . | F | .L | . | H | / |

*** FLAGGED FOR: TRENDS: -AH+AL-H2-OP+OT, LEVELS: NONE, RANK: 1, NO DATA: 4169