

ALC SPECIFICATION SUMMARY
B767-3W0ER

GENERAL DESCRIPTION

Serial Number:		
Date of Manufacture:	29 JAN 97	
Registration:		
Total Flight Hours:	43,519	As of Date:
Total Flight Cycles:	19,409	31 DEC 17
Thrust:	60,600 Lbs	
Max. Take-Off Weight (MTOW):	166,921 Kgs	
Max. Landing Weight (MLW):	136,077 Kgs	
Max. Zero Fuel Weight (MZFW):	126,098 Kgs	
Operating Empty Weight (OEW):	88,156 Kgs	



INTERIOR CONFIGURATION

Economy Class: 310 TC	Manufacturer: Geven	Part Number: Ax-0x-0xx-1TC
Galleys: F6, M1, M2 & A1-A3	Manufacturer: Jamco	
Note:		

ENGINES

Model: RB211-524H36

#1 ESN 13386	32,186 FH	14,409 FC	Last PRSV Date: 25 AUG 11	TSLSV: 2,932	CSLSV: 913	1 st Limiter: 3,805 Cycles
#2 ESN 13471	27,837 FH	11,897 FC	Last PRSV Date: 18 MAY 11	TSLSV: 6,713	CSLSV: 2,197	1 st Limiter: 3,242 Cycles
Note:						

AIRFRAME

C-check Maintenance Interval:	6,000 FH / 3,000 FC / 18 Month	HMV Interval:	6Y / 12Y
Last C-check Date: OCT 2016	43,515 FH 19,408 FC	Last Heavy Check Date: OCT 2016	43,515 FH 19,408 FC
Next C-check Date: APR 2018	49,515 FH 22,408 FC	Next Heavy Check Date: OCT 2022	N/A FH N/A FC

LANDING GEAR

Overhaul Interval: 3,650 Days / 18,000 FC

	CSN	Last Overhaul Date	CSLO	Next Overhaul Date	Cycles Remaining
Nose:	14,805	APR 2018	0	APR 2028	18,000
Left Main:	14,805	APR 2018	0	APR 2028	18,000
Right Main:	14,805	APR 2018	0	APR 2028	18,000
Note:					

ALC SPECIFICATION SUMMARY

B767-3W0ER

APU

TSN: 34,691

Manufacturer: Allied Signal
CSN: 22,437

Model: GTCP331-200
Last SV Date: 12 SEP 2016
TSLSV: 0

Serial Number: P-1716
CSLSV: 0

FEATURES

	Installed		Installed		Installed
8.33 Khz Spacing	Yes	Enhanced Mode S	Yes	ETOPS	180 min
Cargo Loading System	Yes	Reinforced Cockpit Door	Yes	EHS	Yes

AVIONICS

Qty	Component	Manufacturer	Part Number
2	FMC – Flight Management Computer:	Honeywell	4052506-955
2	CDU –Control Display Unit:	Honeywell	4058650-931
2	HF Transceiver:	Rockwell Collins	822-0330-001 622-5772-001
3	VHF Transceiver:	Rockwell Collins	822-0323-002 (qty 1) / 822-1047-002 (qty 2)
1	Cockpit Voice Recorder:	Sundstrand	5100-0080-00
1	ACARS Management Unit:	Allied Signal	965-0758-001
1	DFDR – Digital Flight Data Recorder:	Allied Signal	980-4700-033
1	DFDAU – Digital Flight Data Acquisition Unit:	Teledyne	2233000-816-1
3	ADIRU – Air Data Inertial Reference Computer:	Honeywell	HG1050AE11
2	DME – Distance Measuring Equipment Interrogators:	Rockwell Collins	822-0329-001
2	VOR/Marker Beacon Receiver:	Rockwell Collins	822-0297-001
3	MMR- Multi-mode Receiver	Rockwell Collins	822-1152-002
2	Weather Radar Transceiver:	Rockwell Collins	622-5132-630
1	TCAS Computer: Traffic Collision Avoidance System	Rockwell Collins	622-8971-022
2	ATC – Air Traffic Control System Transponder:	Rockwell Collins	822-1338-003
1	EGPWS – Enhanced Ground Proximity Warning System:	Honeywell	965-0976-003-212-212
2	ADF – Automatic Direction Finder Receiver:	Rockwell Collins	822-0299-001
1	Data Printer	Honeywell	8055515-4502

NOTES: UNLESS OTHERWISE SPECIFIED:

1. WEIGHED DRINKING PER AC-STD-100.
2. ALL SEATS MUST BE FIRE BLOCKED IN ACCORDANCE WITH FAR 25.803.
3. AISLE WIDTH MUST MEET FAR 25.815(a) 15" OR MORE FROM FLOOR UP TO 25" HEIGHT, 20" OR MORE ABOVE 25" HEIGHT. THE ACTUAL AISLE WIDTH FOR THIS AIRCRAFT IS SHOWN AT DIFFERENT SEAT ROWS.
4. SEATBACK BREAKOVER MUST BE RESTRICTED ON ALL SEATS BORDERING THE PASSENGER TO PREVENT ENCRUMBMENT INTO THE PROJECTED DOOR OPENING.
5. ALL SEATS MUST COMPLY WITH TSO C296, FAR 25.803, AND CURRENT FAA APPROVED UNDER-SEAT BAGGAGE RESTRAINT BARS.
6. INSTALL SEATS IN ACCORDANCE WITH BOEING 787 AAM 25-25.
7. ALL SEAT FOLD/DOWN STA. LOCATIONS ARE TO CENTERLINE OF FORWARD SEAT STRUT.
8. ALL LAP BELTS MUST MEET REQUIREMENTS TSO C-220.
9. SEAT BACK BREAKOVER WITH 25 LBS. FORCE APPLIED IN HORIZONTAL DIRECTION.
10. AISLE WIDTH LEADING TO ALL TYPE A AND EMERGENCY EXITS MUST NOT BE LESS THAN 30 INCHES WIDE FROM FLOOR TO CEILING.
11. EMERGENCY EQUIPMENT REQUIREMENTS AND LOCATIONS IS THE RESPONSIBILITY OF THE OPERATOR.
12. AIRCRAFT MUST BE WEIGHED AFTER INTERIOR RECONFIGURATION TO DETERMINE NEW AIRCRAFT WEIGHT & C.G. LOCATION, REVISE AIRCRAFT WEIGHT & BALANCE RECORDS AS REQUIRED.
13. ALL INTERIOR ITEMS NOT SPECIFICALLY CALLED OUT IN THE BILLS OF MATERIALS ARE EXISTING IN THE AIRCRAFT.
14. NOTCH POINTS AS REQUIRED TO MATCH NEW SEAT POSITIONS. REFERENCE AIRCRAFT MAINTENANCE MANUAL, CHAPTER 25 FOR PSU REMOVAL/INSTALLATION PROCEDURES.
15. EACH STORAGE COMPARTMENT MUST BE PLACED FOR ITS DESIGN HEIGHT (EXCEPT AS SPECIFIED IN FAR 25.1557).
16. ALL SEAT BOTTOM CUSHIONS MUST CONFORM TO FAR 25.1415(a) TO BE USED AS FLATBATH DEVICES.
17. ALL LIFE VESTS MUST CONFORM TO TSO C-13.
18. "FASTEN SEAT BELT" AND "NO SMOKING" SIGNS MUST BE VISIBLE WHEN ILLUMINATED TO EACH PERSON SEATED IN THE PASSENGER CABIN.
19. EACH CIGARETTE RECEPTACLE MUST BE MARKED IN ACCORDANCE WITH FAR 25.791(c), ("NO CIGARETTE DISPOSING").
20. LAVATORY DOORS MUST BE MARKED AND PROVIDED IN ACCORDANCE WITH FAR 25.791(d), NO SMOKING AND FAR 25.803(g), ASH TRAYS.
21. ALL SEAT BACKS AND BELTBUCKLES MUST HAVE "FASTEN SEAT BELT WHILE SEATED" PLACARDS.
22. ARMRESTS IN UPRIGHT POSITION MUST NOT PROJECT BEYOND SEAT BACK IN UPRIGHT POSITION MORE THAN 6.5", TYPICAL FOR ALL SEATS.
23. A MINIMUM DISTANCE FROM BELTHEAD TO CRP OF SEAT DIRECTLY AFT OF BELTHEAD IS 30 INCHES, IN ACCORDANCE WITH AC 25-119, SECTION 25.785, PARA B1 (4) (3) PAGE 44.

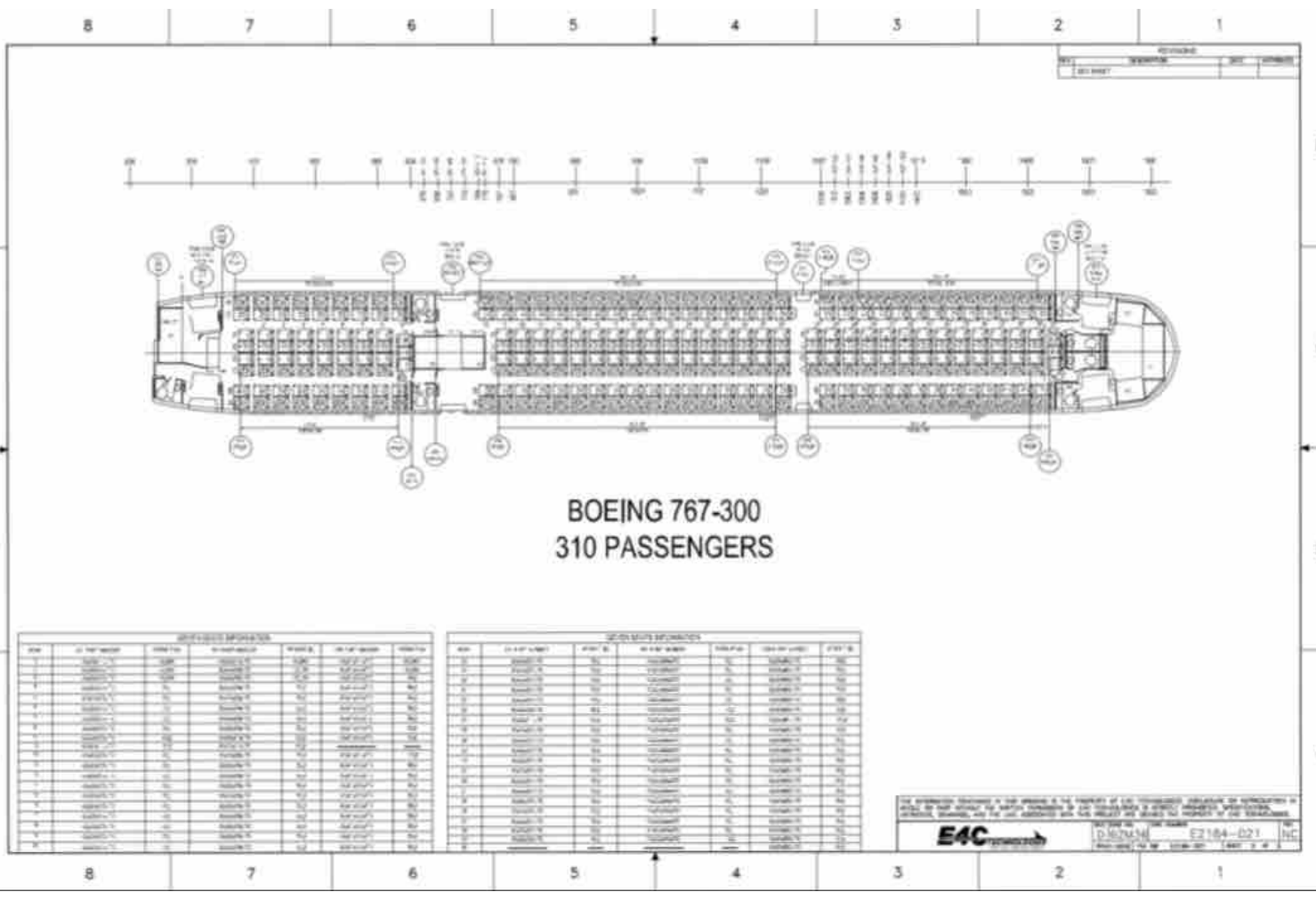
REVISIONS			
REV.	DESCRIPTION	DATE	APPROVED
01	INITIAL RELEASE	JUN 9, 2011	

QTY	PART OR IDENTIFYING NO.	NOMENCLATURE OR DESCRIPTION	MATERIAL/SPECIFICATION	ITEM NO.
3	A241400-1TC	SEAT, FWD, QUAD STD CRT, NO RECLINE, DPA, NO EE PROVISION	OVEN	10
33	A241400-1TC	SEAT, FWD, QUAD STD CRT, NO RECLINE, DPA, 4PCU PROVISION, 14EB PROVISION	OVEN	9
3	A241401-1TC	SEAT, FWD, QUAD RT CRT, NO RECLINE, 4PCU PROVISION, 14EB PROVISION	OVEN	8
2	A242401-1TC	SEAT, FWD, DBL, STD, R/L LAST ROW, NO RECLINE, DPA, NO EE PROVISION	OVEN	7
2	A242402-1TC	SEAT, FWD, DBL, STD, LH LAST ROW, NO RECLINE, DPA, NO EE PROVISION	OVEN	6
23	A242402-1TC	SEAT, FWD, DBL, STD, RH, NO RECLINE, DPA, 4PCU PROVISION	OVEN	5
33	A242402-1TC	SEAT, FWD, DBL, STD, LH, NO RECLINE, DPA, 4PCU PROVISION	OVEN	4
3	A242403-1TC	SEAT, FWD, DBL, RT RT, NO RECLINE, 4PCU PROVISION	OVEN	3
2	A242411-1TC	SEAT, FWD, DBL, RT LH, NO RECLINE, 4PCU PROVISION	OVEN	2
2	A241402-1TC	SEAT, FWD, TR, RT CRT, NO RECLINE, LAST ROW, 4PCU PROVISION	OVEN	1
LAYOUT OF PASSENGER ARRANGEMENT				

PARTS LIST

THE OPERATOR UNDERTAKES THE OBLIGATION OF THE PROPERTY OF THE OPERATOR. INDEMNIFICATION OF THE OPERATOR IS ONLY IN THE EVENT OF THE OPERATOR'S NEGLIGENCE OR OTHER UNLAWFUL ACTS. THE OPERATOR IS NOT RESPONSIBLE FOR THE RESULTS OF THE OPERATOR'S NEGLIGENCE OR OTHER UNLAWFUL ACTS.

OPERATOR'S DATA AIRCRAFT TYPE: B787-9 SERIAL NO.: 2184 MODEL: 787-9	DO NOT SCALE DRAWING NO.: 2184 REV.: 1 DATE: 06/09/11	 EAC LOPA - 310Y PASSENGERS DRENT THRU 8767-300 MSN 28264 E2184-021
---	---	---



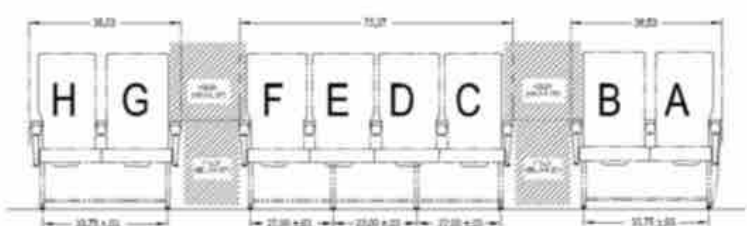
ROW	SEAT NUMBER	SEAT TYPE	SEAT WIDTH	SEAT PITCH	SEAT WEIGHT
1	1A-1F	Y	18.5"	32"	250 lbs
2	1A-1F	Y	18.5"	32"	250 lbs
3	1A-1F	Y	18.5"	32"	250 lbs
4	1A-1F	Y	18.5"	32"	250 lbs
5	1A-1F	Y	18.5"	32"	250 lbs
6	1A-1F	Y	18.5"	32"	250 lbs
7	1A-1F	Y	18.5"	32"	250 lbs
8	1A-1F	Y	18.5"	32"	250 lbs

ROW	SEAT NUMBER	SEAT TYPE	SEAT WIDTH	SEAT PITCH	SEAT WEIGHT
1	2A-2F	Y	18.5"	32"	250 lbs
2	2A-2F	Y	18.5"	32"	250 lbs
3	2A-2F	Y	18.5"	32"	250 lbs
4	2A-2F	Y	18.5"	32"	250 lbs
5	2A-2F	Y	18.5"	32"	250 lbs
6	2A-2F	Y	18.5"	32"	250 lbs
7	2A-2F	Y	18.5"	32"	250 lbs
8	2A-2F	Y	18.5"	32"	250 lbs

E2184-021
 Boeing 767-300 Cabin Configuration

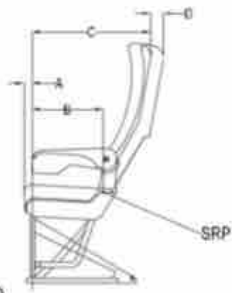
8 7 6 5 4 3 2 1

REVISIONS			
NO.	DESCRIPTION	DATE	FORWARDED
001	001		

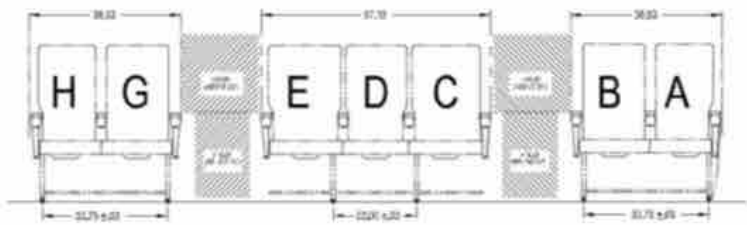


VIEW LOOKING AFT (2/4/2 CONFIGURATION)

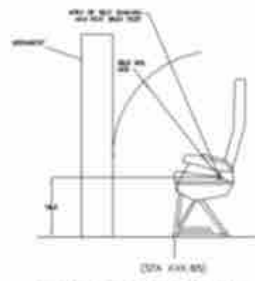
SEAT GEOMETRY (INCHES)			
DIM	DBL	TPL	QUAD
A	2.50	2.50	2.50
B	14.10	14.10	14.10
C	22.48	22.48	22.48
D	-	-	-



SEAT GEOMETRY DETAILS



VIEW LOOKING AFT (2/3/2 CONFIGURATION)



HEAD STRIKE CLEARANCE

THE INFORMATION CONTAINED IN THIS DRAWING IS THE PROPERTY OF E4C TECHNOLOGIES, INC. AND IS NOT TO BE REPRODUCED OR TRANSMITTED IN ANY FORM OR BY ANY MEANS, ELECTRONIC OR MECHANICAL, INCLUDING PHOTOCOPYING, RECORDING, OR BY ANY INFORMATION STORAGE AND RETRIEVAL SYSTEM, WITHOUT THE WRITTEN PERMISSION OF E4C TECHNOLOGIES, INC. ALL RIGHTS ARE RESERVED. THIS DRAWING IS UNCLASSIFIED AND IS NOT CONTROLLED BY THE EXPORT AND IMPORT ACT, 1988 (E.O. 12958).

E4C TECHNOLOGIES, INC.
 10000 W. 10th Ave., Suite 100, Denver, CO 80202
 TEL: 303.755.1000 FAX: 303.755.1001
 WWW.E4C.COM

REV: 001
 DATE: 01/14/16
 E2184-021
 INC

8 7 6 5 4 3 2 1