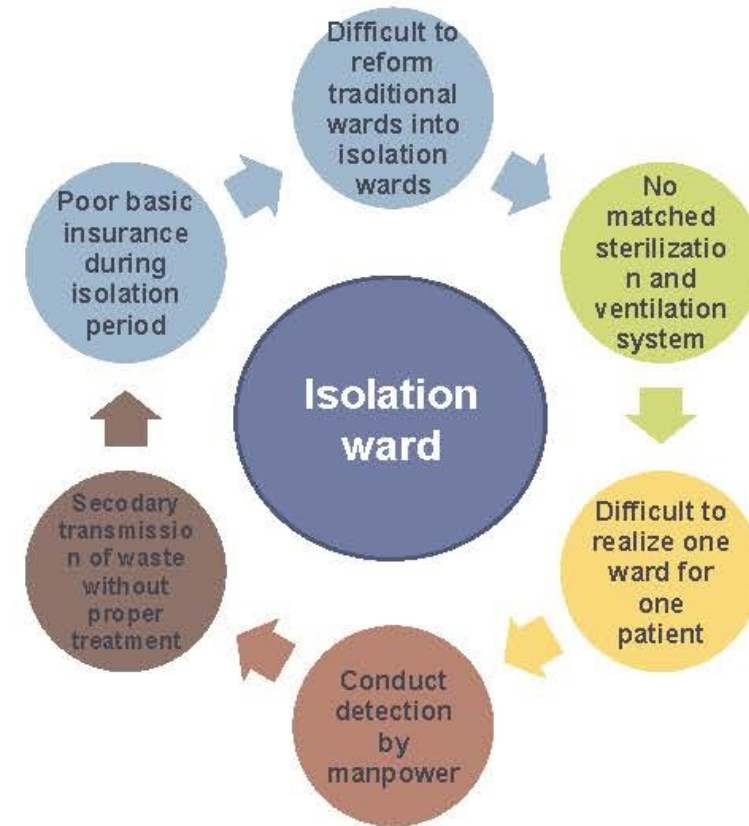
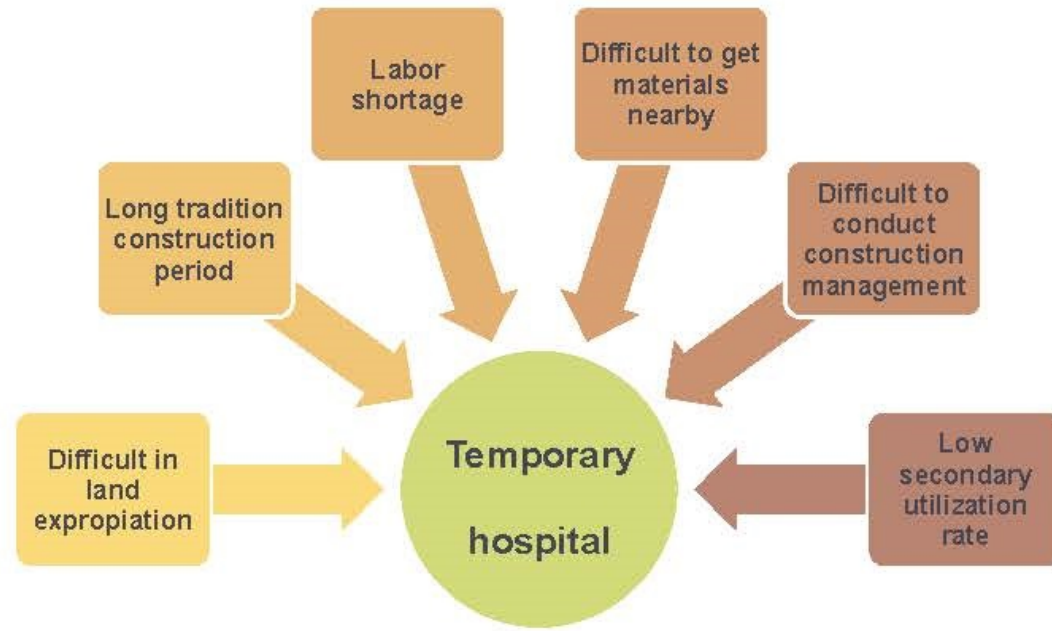


Modular Intelligent Medical Isolation Cabin



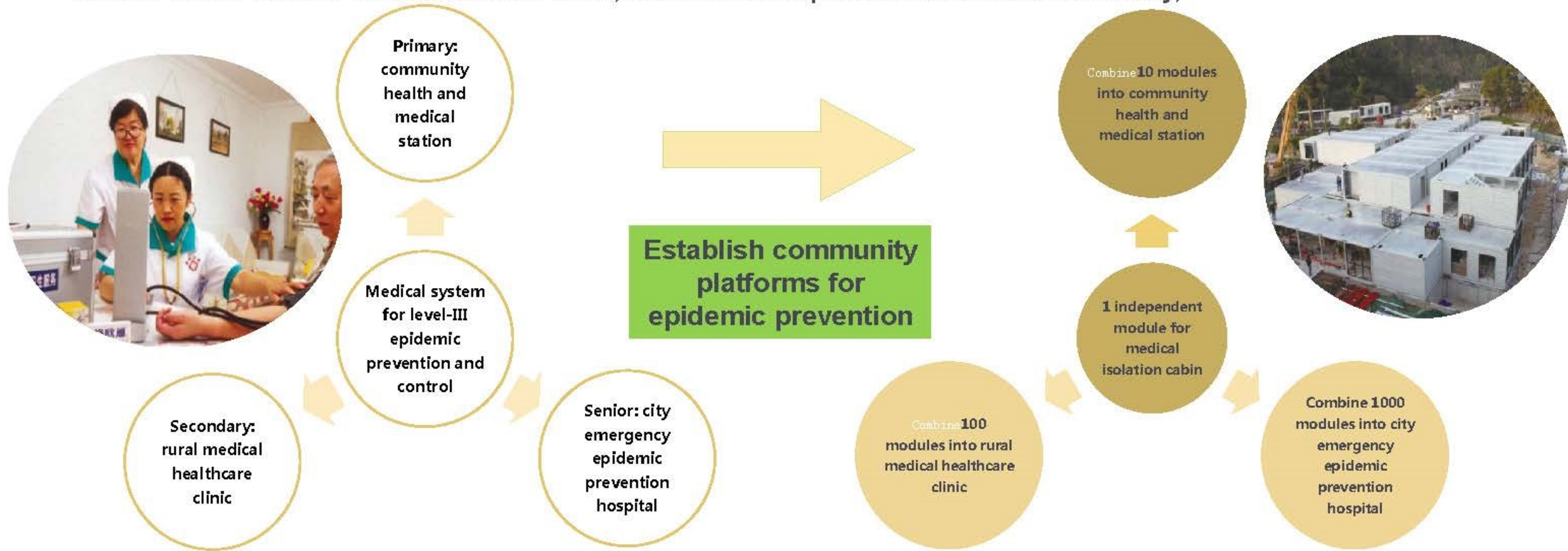
I. Background analysis

Facing with the major epidemic situation,
Hospital encounters the following emergency difficulties:



II. Solutions

1. Shift the focus of epidemic prevention from treatment to prevention;
2. Assign epidemic prevention and control works to community healthcare clinic for more efficient multi-level prevention and control;
3. Establish early warning platform for community medical treatment, epidemic prevention and control + remote intelligent diagnosis and treatment;
4. Build mobile modular medical isolation cabin, which can be separated and concentrated easily;



II. Solutions

Reference case:

- High-efficient modular dissembling, splitting, integration, management and operation
- 15 years service life, with more than 6 times of recycle.
- Good overall heat insulation performance
- Each cabin has separate framework and is connected with each other by special joint to ensure safety



II. Solutions

Product solution: Modular medical isolation cabin



2.0 Appearance

JO-Z design



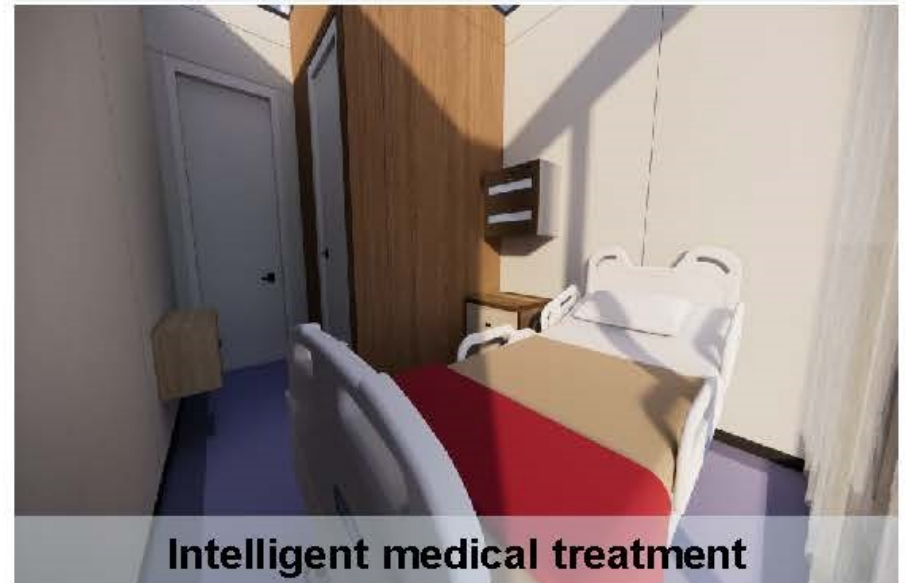
Sterilized ventilation system and windows for visiting and observation



Sterilized isolation channel



Fabricated bathroom



Intelligent medical treatment

II. Solutions



- The cabin is 6000 (length)*3000mm(width)*3200mm(heig ht) in size, with characteristic of overall stell-structure modular construction that can resist wind and earthquake;
- The cabin, featuring high integration, is in steel module combination structure by standard industrilized production, which can be transported in unit and put into operation once it is placed.
- It can be used in different combinations to satisfy different islolation zone settings, connected to the intelligent operation and management system, and remodeled into different usage. As a leading solution in national medical modulazation now, the cabin effectively alleviates the impact of construction period on health recover time.

Modular Medical Isolation Cabin

Scan the QR on the left for 720° panoramic view of interior decoration

II. Solutions



- The design of the isolation cabin conforms to the national modular building standards, and all indicators and materials selection meet relevant medical standards;
- The cabin integrates wise information technology of 120, new energy, sterilized ventilation system, intelligent bathroom, wastes disinfection management, fabricated interior decoration, air detection, intelligent control and other technical means to realize aseptic isolation, digital remote management, intelligent integrated control and low energy consumption operation;
- The main body adopts steel structure module, with excellent wind resistance, earthquake resistance, heat insulation, fire prevention, air tightness and water tightness that, which meet the permanent construction standard. All water and electric interfaces adopt modular quick plug-in mode, which can satisfy separate use in different work conditions and be transported at anytime.

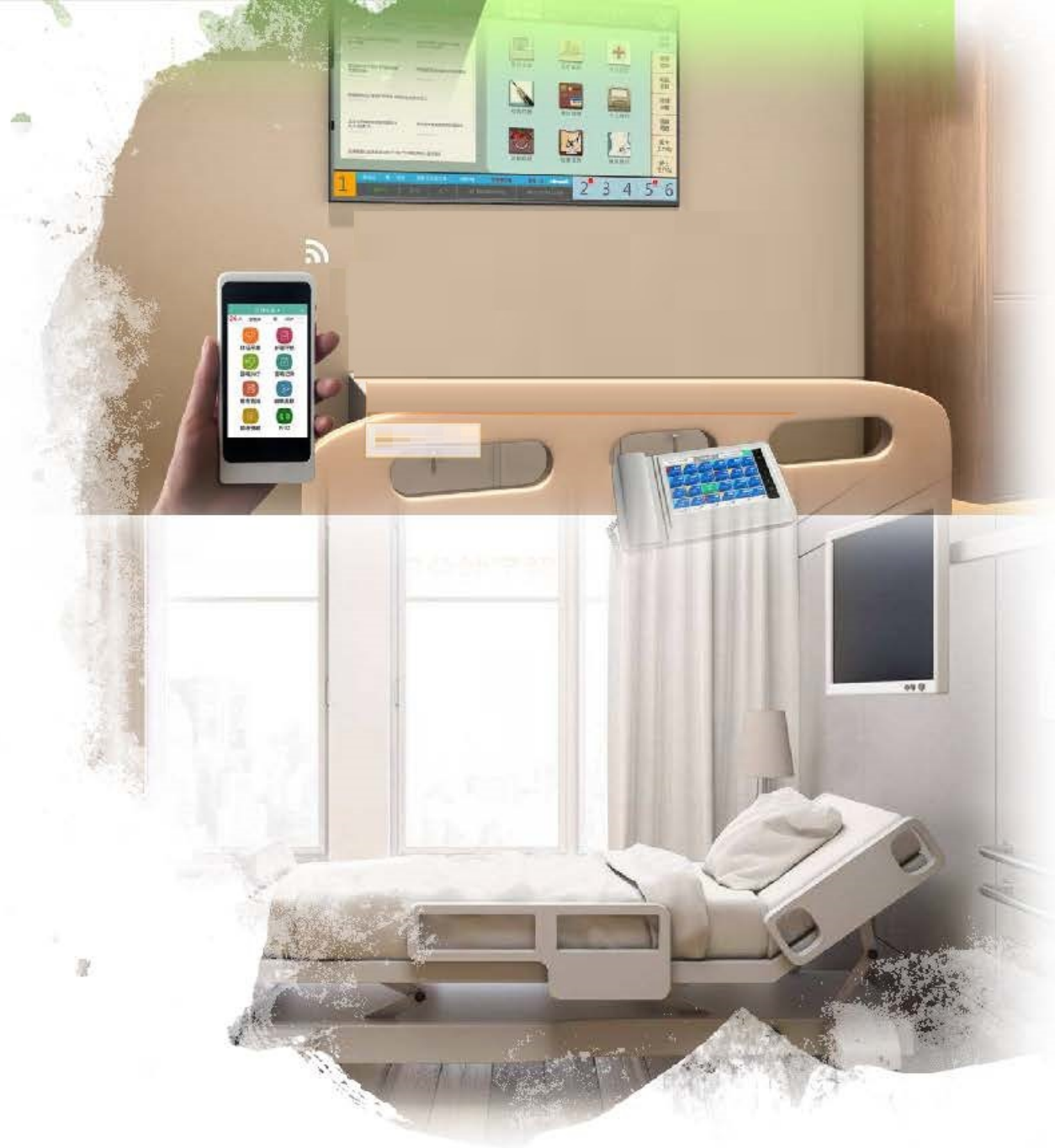
Function highlight 1

- **Monitered globally by Internet of Things**

The brand new smart ward is equipped with high-intelligent voice camera and multiple virus monitoring device as well as basic custody device, which can remotely make diagnosis online, continuously control and monitor patients' status and physical data in real time, realize 1 person monitor 2000 isolation wards online at the same time, and assign doctors to provide timely treatment according to the severity of patients monitored by the system; also, this system is a barrier-free remote communication platform for medical staff and patients' relatives;

- **An outdoor monitoring window for regular rounds**

The floor-type monitoring window of the ward adopts the glass with low reflection and high transparency, and sound and heat insulation, the external voice interaction system and the curtain switch, which can observe and communicate with the patient closely outside the window, to further protect the safety of medical staff and relatives.



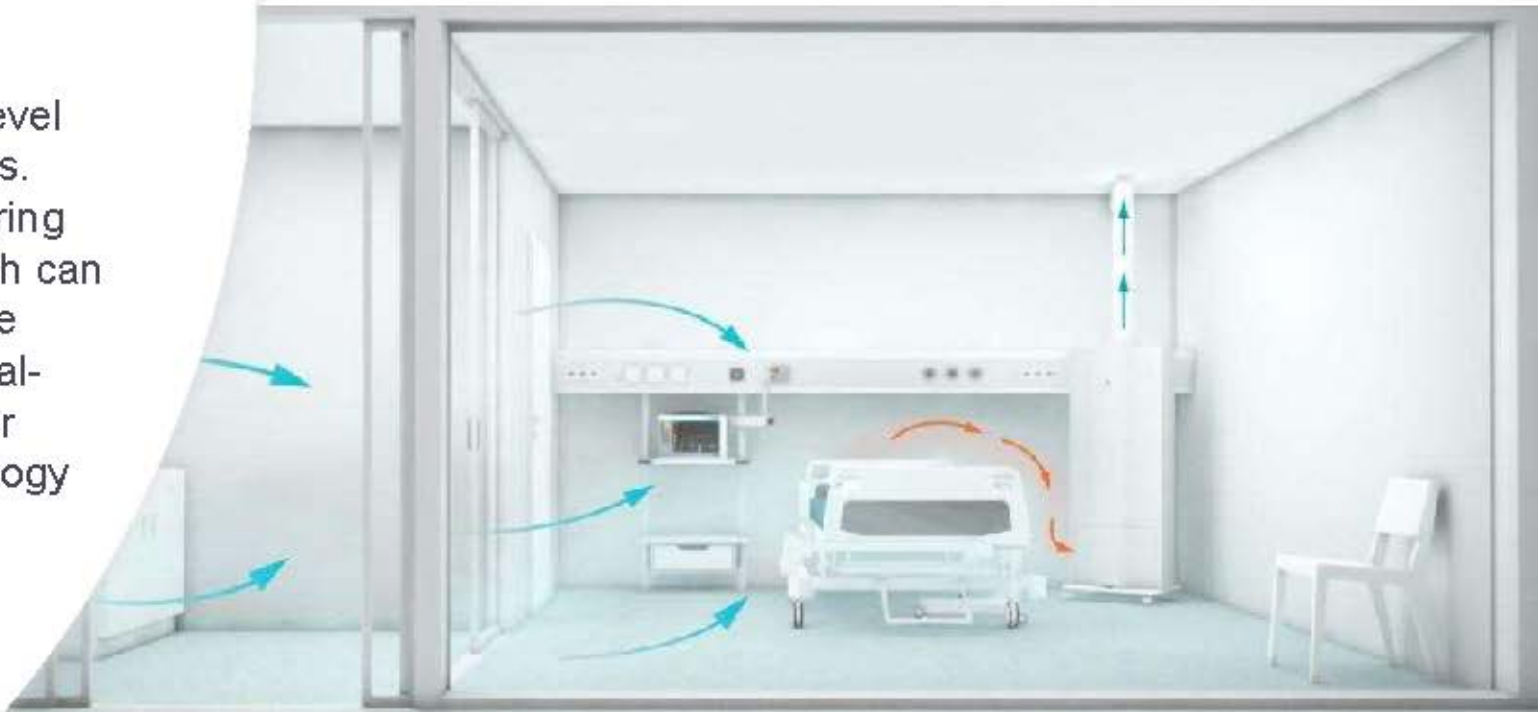
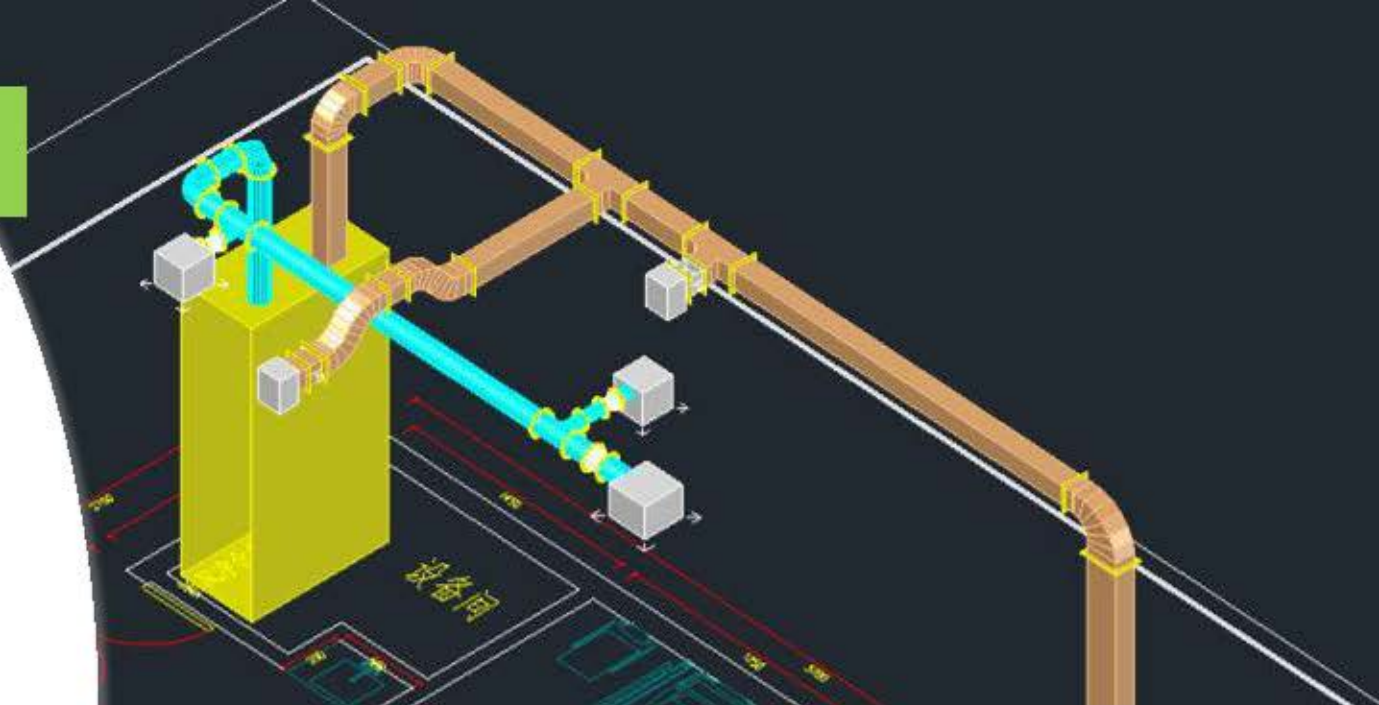
Function highlight 2

- **Haier rapid sterilization and purification system**

With Haier rapid sterilization and ventilation device in ward, combined with negative oxygen ion humidification measures, the actual measured effective negative oxygen ion reached $3500n/cm^3$, the ward realizes comprehensive cleaning and sterilization for 72 seconds/time; at the same time, sterilization and filtering unit at the external air outlet can ensure the safety of the air outside the ward;

- **Extraordinary tightness performance**

The double-layer isolation door is made of high-level steel screen door with high safety and airtightness. The integrated floor-type observation and monitoring window has built-in blinds to adjust the light, which can realize micro ventilation when it is not opened; the whole ward is built with internal multi-layer medical-level isolation wall material, and the isolation layer adopts the unit seamless welding closure technology to achieve the full closure of the isolation area;



Function highlight 3

The medical isolation cabin integrates Haier Cloud Construction fabricated bathroom, SMC or FPB composite integrated waterproof chassis, which forms a complete space with the wallboard and roof, and the inner parts are matched with V&H intelligent bathroom to form an overall solution for the bathroom.

High efficiency: Two persons can install one set in 4 hours;

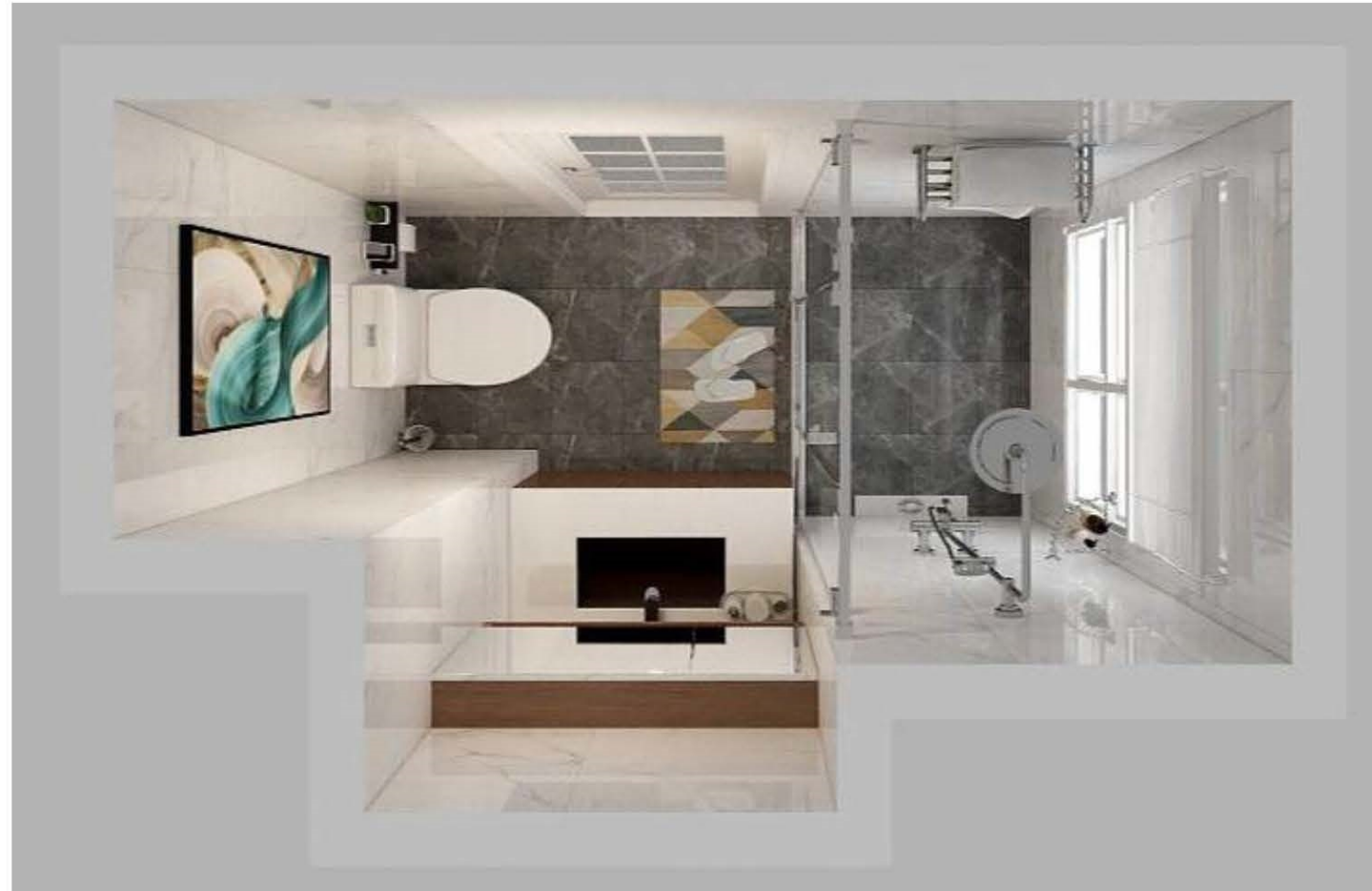
User-friendly: Anti-skid design and skin-friendly feeling are more suitable for medical experience;

Long service life: More reliable waterproof and anti-leakage performance can ensure long service life;

More environmental: Prefabricate in the factory and assemble on site, without construction wastes;

More healthy: Part uses V&H intelligent toilet and hip bath apparatus, which are more healthy and convenient;

V&H



Function highlight 4

- **New aluminium material and application**

All aluminum alloy cabinets are used indoor, free of formaldehyde and volatilization of harmful substances, with good fireproof and waterproof performance and durability; new materials are used indoors, toxic-free and formaldehyde-free, and special coating on the surface can achieve excellent antibacterial performance, with fire rating of A1 and over 10 years service life of material;



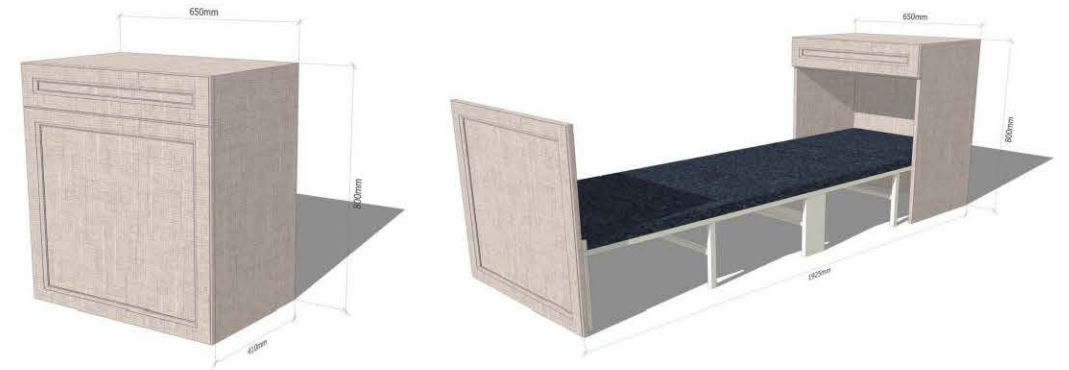
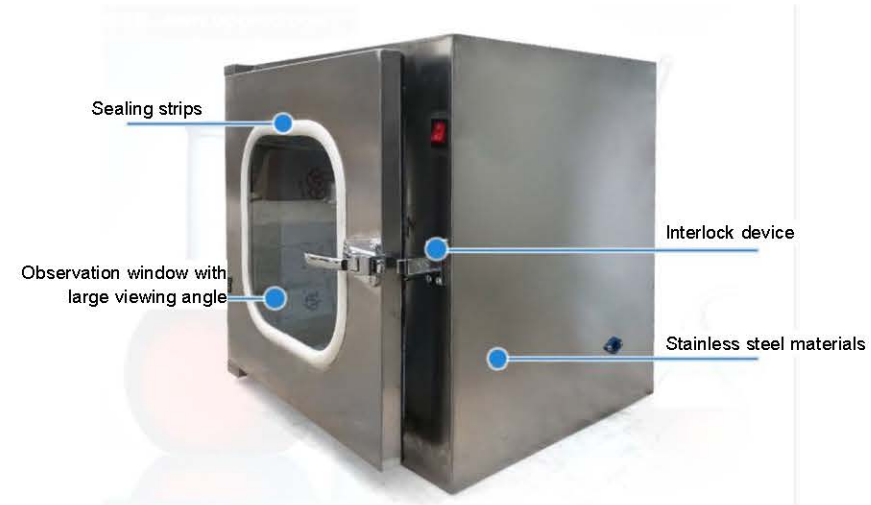
Function highlight 5

- **UV sterilized and purified transfer window**

The daily food and medical supplies are delivered through the sterilized window, which is a safe and reliable way to conveniently isolate people's daily life and diet needs;

- **Integrated accompany combination**

Equipped with a stretcher folding bed, which is integrated in the cabinet for easy storage; aluminum alloy cabinet is adopted, which is free of formaldehyde and volatilization of harmful substances, featuring fire resistant and durable;



Function highlight 6

- **Wind resistance and earthquake resistance**

Strong weather ability, earthquake resistance, wind resistance of the products

reach permanent construction standard;

- **Module combination and application**

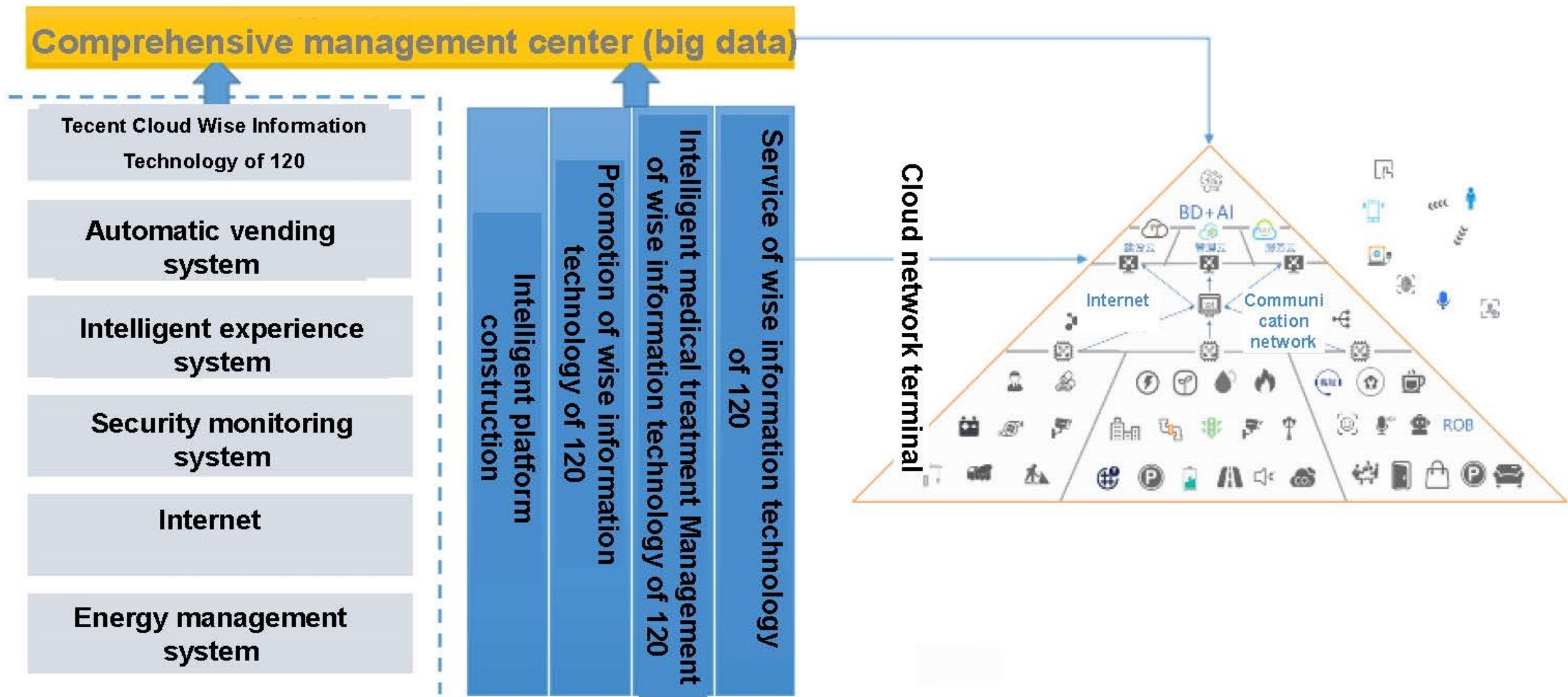
This medical cabin can be used in multiple combination, and can be extended into a multiple-layer fabricated steel structure hospital.

- **Integration of wind and solar energy storage**

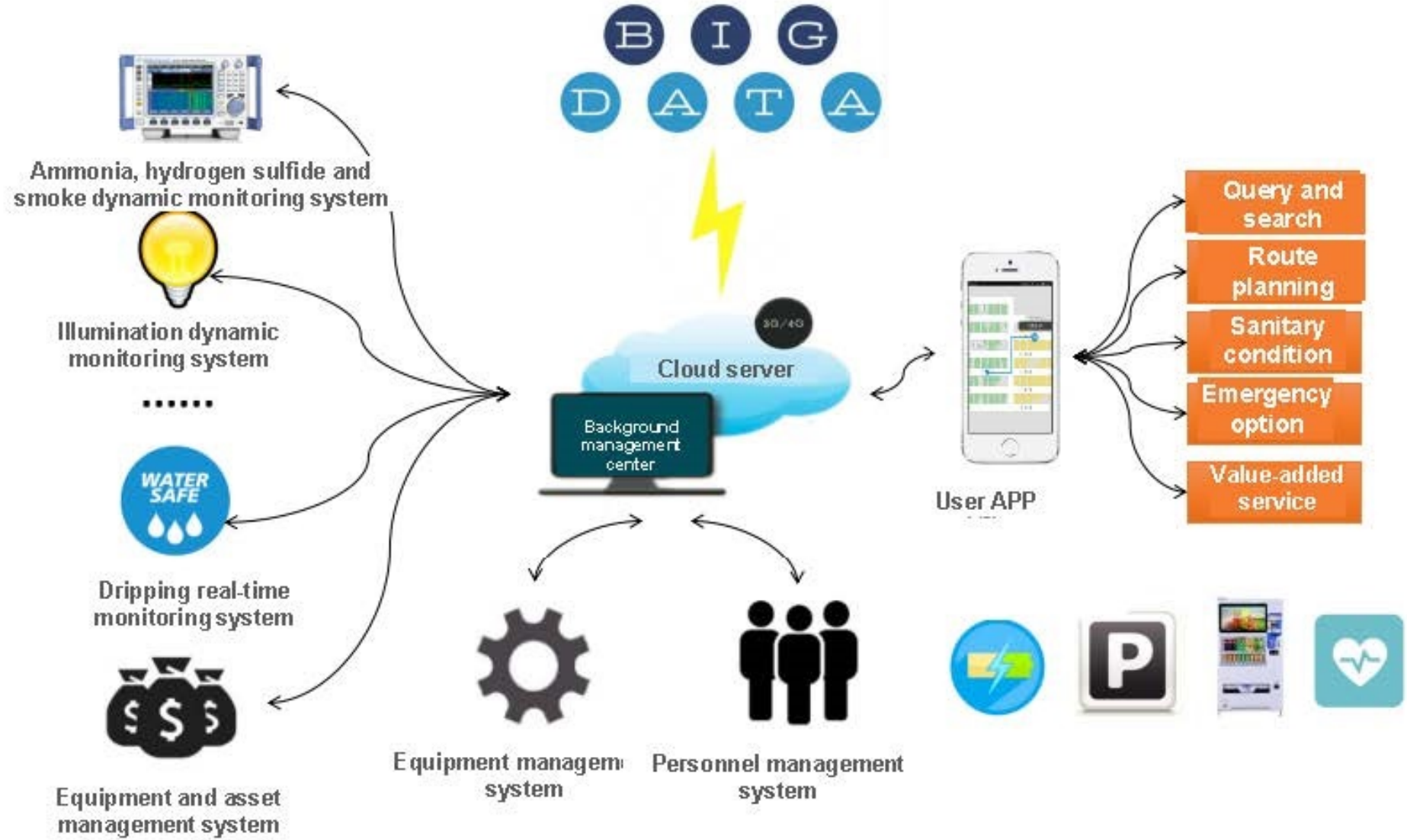
The medical cabin is equipped with multiple power generation expansion system and integrated of photovoltaic, wind power, energy storage, diesel units, so that it can adapt to situations and applications in different places;



Upgraded version-wise information technology of 120




Upgraded version-wise information technology of 120



II. Solution-Configuration list

It can be customized in large scale according to specific application circumstances

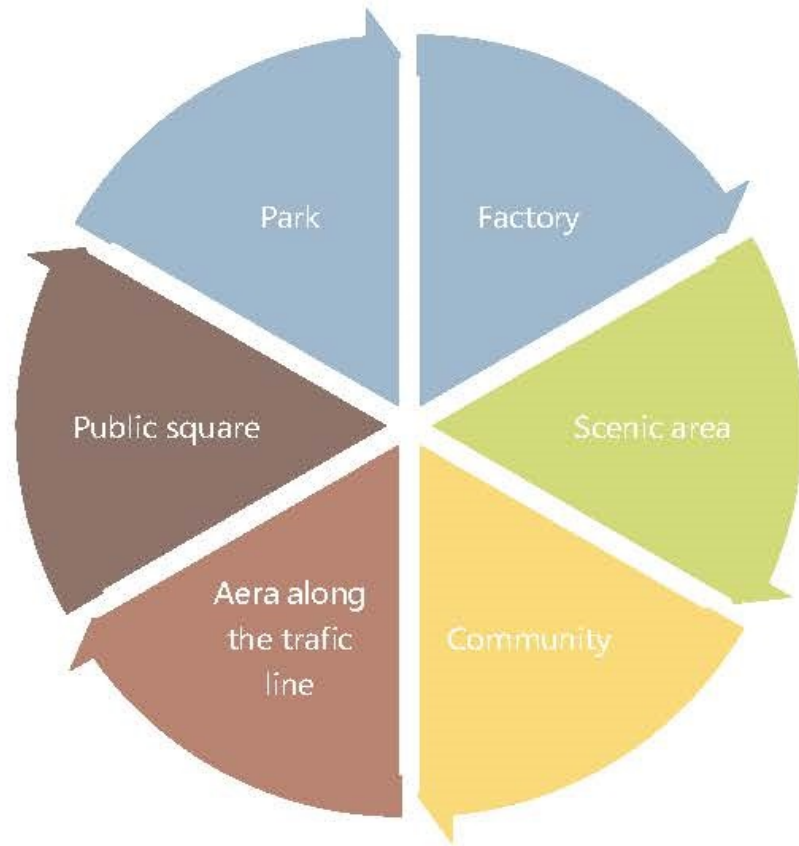
Basic configuration	Single cabin standard version	Combined isolation ward (12 blocks)	Bathroom	A01 standard version	A01 upgraded version
Diagram			FPB fabricated bathroom	-	●
			Multifunctional hip bath apparatus	-	○
			Water heater	●	●
			Toilet (with handrail)	●	●
			Shower room	●	●
			Wash basin (with handrail)	●	●
			Mirror	●	●
			Stainless steel trash bin	●	●
			Towel rack	●	●
			Soap dispenser	●	●
			Stainless steel tissue box	●	●
Dimension	6000*3000*3200 (mm)		Isolation ward	A01 standard version	A01 upgraded version
Main body frame (steel)	●	●	Air conditioner	●	●
Light steel roof	●	●	Medical transfer window	●	●
Light steel wall	●	●	Trash isolation box	●	●
Bottom	●	●	Curtains	●	●
Doors and windows	●	●	Medical partition curtain	-	●
Internal system (wall, roof, ground)	●	●	Hospital bed	-	●
Bathroom	●	●	Bedside cupboard	-	●
Water and electricity system	●	●	Folded high-back chair	-	○
Intelligent medical system	A01 standard version	A01 upgraded version	Display screen	-	○
Medical equipment belt	●	●	Isolation channel	A01 standard version	A01 upgraded version
Clean ventilation system	●	●	Medical water purifying tank	●	●
Energy storage system	○	○	UV germicidal lamp	●	●
Smoke sensor	○	●	Spray-type epidemic prevention channel	-	○
Environment detection system	○	○			
Wireless inspection system	○	○			
Access control system	○	●			
UV germicidal lamp	○	●			
Emergency intercom	○	●			
Oxygen hose	○	●			

Note: "-": none; "○": optional; "●": standard

II. Solution -Strength analysis

Indicator/types	Traditional hospital construction	Packing box-type isolation ward	Modular Medical Isolation Cabin
Fundamental principles	Carry out site selection, design, construction, decoration, equipment installation, commissioning and operation, establishment of operation management system before putting into operation, which is generally applicable to long-term hospital construction planning.	Carry out site selection, design, packing room lifting, site assembly, equipment installation, commissioning and operation, establishment of management system before putting into operation, which is generally applicable to emergency and temporary construction.	Carry out industrialized flow-line production, commissioning and detection, site lifting and grounding, water and electric power connection, and then it can be put into operation, which is applicable to emergency and temporary use. The construction has no requirement for application scenario and can be re-combined as permanent construction.
Site construction period	1-3 years	1 month	1 day
Space reformation and expansion	Huge difficulty in interior space reformation	Medium difficulty in chip-type wall transfer and pipeline rearrangement	Standard water and electric power interface, remain the original decoration, and conduct modular recombination
Dismantling and moving for cyclic utilization	Poor	Low	Good
Environmental protection	Poor	Average	Good
Scope of application	High-rise and below	Low-rise	Low and multi-floor relocation housing
Physical isolation performance	Average	Poor	Good
Heat preservation and energy consumption	Average	Poor	Good
Labor management	Easily disturbed by departments outside the isolation area	Good management of centralized treatment points	Both centralized and distributed management work, and it is more reasonable

III. Application expansion after epidemic



•Property epidemic prevention and control system

•Remote medical consultancy and diagnosis system

•Suspended infectious case isolation room of residential area

•Integrated air disinfectant

•Infrared thermometer with face recognition

•Remote diagnosis and treatment LCD touch TV

•Health and epidemic prevention package and other functions

•Convenience function

•Expansion business

- It is shipped once and put into operation once placed
- Switch system to transfer using function
- Permanent intelligent epidemic prevention and control medical emergency and assistance cabin
- **And increase certain commercial revenue to reduce daily operation cost of medical station**

III. Application expansion after epidemic: Hotels and homestay & RV park



Note: Jointly promote with small and micro RV

III. Application expansion after epidemic: third space of school/community



Shared gym



Hyperbaric oxygen chamber



Shared book store



Shared laundry

Note: Conduct cooperative promotion with Gandao Intelligence