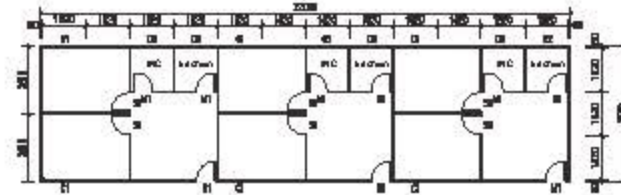


Standard k house - Sandwich panel house

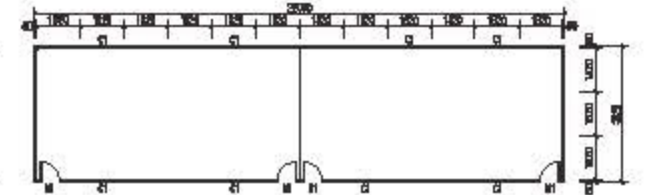
K house is suitable for the office, accommodation, stock, canteen, etc.



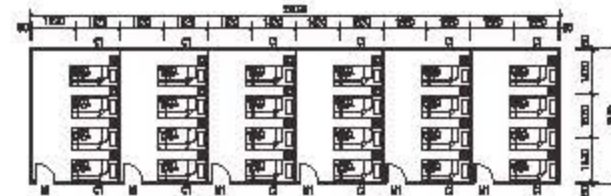
3KX12KX3P Plan for accommodation 1



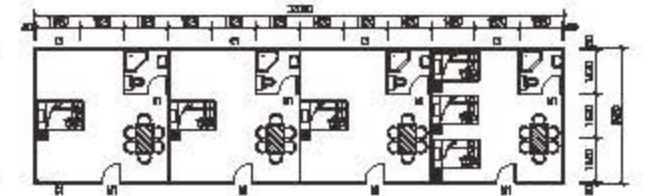
3KX12KX3P Plan for accommodation 2



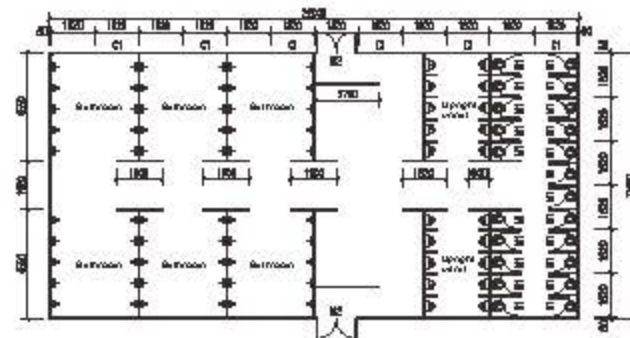
3KX12KX3P Plan for accommodation 3



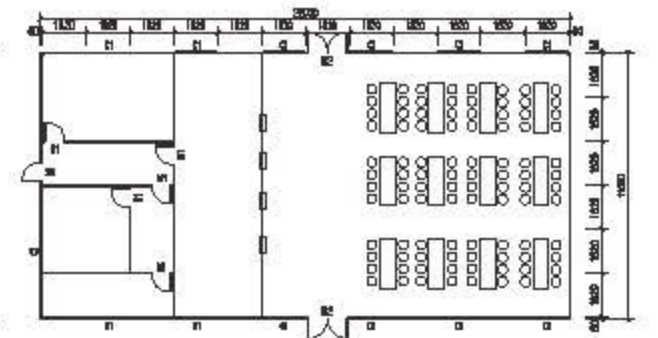
3KX12KX3P Plan for accommodation 4



6KX12KX3P Plan for bathroom



6KX12KX3P Plan for canteen



East Timor K house-Sandwich panel house

Suit for refugee house, poor people house, and cottage house, etc.

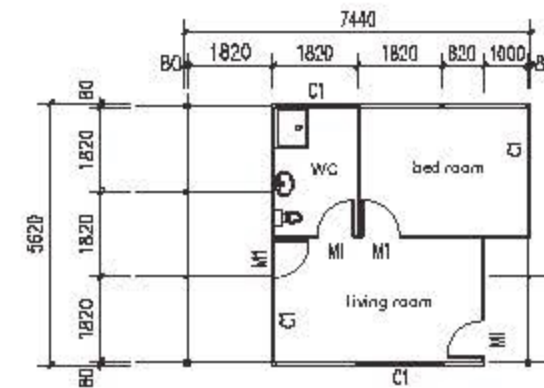
- ▶ Special structure for 7 grade earthquake resistance.
- ▶ 10 grade typhoon resistance design.
- ▶ Special design save 30% shipping freight.
- ▶ Cut down 100% installation cost.



INTRODUCTION:

- 1、EPS sandwich panel for roof and wall.
- 2、Galvanized steel structure for main frame.
- 3、Aluminium alloy sliding window and Sandwich panel door.

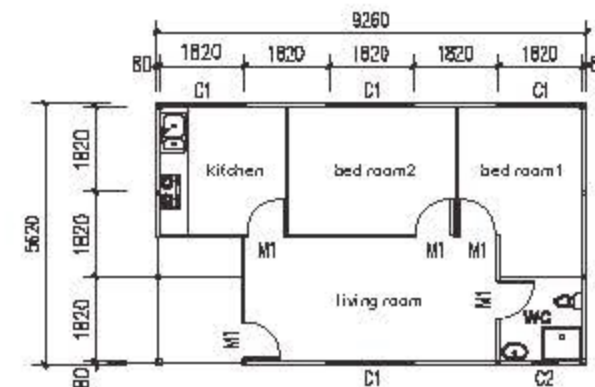
3KX4KX3P East timor K house



3KX4KX3P East timor K house



3KX5KX3P East timor K house



3KX5KX3P East timor K house



The material list comparing between the different style house

序号/ Number	部件名称/ Component name	坡顶型板房/ Slope style house			平顶型板房/ Flat style house
		普通型/ Normal classic	标准型/ Standard classic	高档型/ Luxury classic	豪华型/ Luxury classic
1	地梁/ Ground beam	8#C型钢/ 8#C section steel	8#C型钢/ 8#C section steel	8#C型钢/ 8#C section steel	55mm镀锌槽/ 55mm Z inc channel steel
2	立柱/Column	双8#C型钢/ Double 8# section steel	双8#C型钢/ Double 8# section steel	双8#C型钢/ Double 8# section steel	双14#C型钢/ Double 14# section steel
3	圈梁/ Ring beam	8#C型钢/ 8#C section steel	8#C型钢/ 8#C section steel	8#C型钢/ 8#C section steel	
4	一字梁/ "一" shape beam	16#C型钢/ 16# section steel	16#C型钢/ 16# section steel	16#C型钢/ 16# section steel	双18#C型钢/ Double 18# C section steel
5	楼面檐条/ Purlin in the floor	8#C型钢/ 8#C section steel	8#C型钢/ 8#C section steel	8#C型钢/ 8#C section steel	8#C型钢/ 8#C section steel
6	屋架梁/ "A" shape beam	8#C型钢/ 8#C section steel	8#C型钢/ 8#C section steel	8#C型钢/ 8#C section steel	
7	屋面檐条/ Purlin in the roof	L40角钢/ L40 angle iron	L40角钢/ L40 angle iron	L40角钢/ L40 angle iron	
8	楼梯/Stair	钢楼梯/Steel stair	钢楼梯/Steel stair	钢楼梯/Steel stair	钢楼梯/Steel stair
9	走道板/ Aisle board	3mm花纹钢板/ 3mm grain board	3mm花纹钢板/ 3mm grain board	3mm花纹钢板/ 3mm grain board	3mm花纹钢板/ 3mm grain board
10	外墙板/ Exteriwo wall panel	外: 50mm彩钢夹芯板/ 内: 镀锌板/ Outer: 50mm sandwich panel Inner: Zinc board	50mm彩钢夹芯板/ 50mm sandwich panel	50mm彩钢夹芯板/ 50mm sandwich panel	50mm彩钢夹芯板/ 50mm sandwich panel
11	内隔墙板/ Interior wall panel	50mm镁磷夹芯板/ 50mm double color Phosphor magnesium filled board	50mm彩钢夹芯板/ 50mm sandwich panel	50mm彩钢夹芯板/ 50mm sandwich panel	50mm彩钢夹芯板/ 50mm sandwich panel
12	屋面板/ Roof panel	20mm PU发泡瓦/ 20mm PU foamed tile	20mm PU发泡瓦/ 20mm PU foamed tile	50mm彩钢夹芯大波瓦/ 50mm sandwich roof panel	75mm彩钢夹芯大波瓦/ 75mm sandwich roof panel
13	楼板/ Floor board	15mm木夹板/ 15mm ply wood board	15mm木夹板/ 15mm ply wood board	15mm木夹板/ 15mm ply wood board	15mm木夹板/ 15mm ply wood board
14	窗/ Window	塑钢推拉窗/ Plastic steel sliding window	塑钢推拉窗/ Plastic steel sliding window	塑钢推拉窗/ Plastic steel sliding window	塑钢推拉窗/ Plastic steel sliding window
15	门/ Door	钢型门框彩钢复合门板/ Steel frame with sandwich panel door	钢型门框彩钢复合门板/ Steel frame with sandwich panel door	钢型门框彩钢复合门板/ Steel frame with sandwich panel door	钢型门框彩钢复合门板/ Steel frame with sandwich panel door

The area comparing form of slope style house

Length	Width	One Floor (3P)			Two Floor (6P)			Three Floor (9P)		
		3K	4K	5K	3K	4K	5K	3K	4K	5K
4	K	45.53	59.07	72.61	103.79	130.87	157.95	176.04	216.66	257.28
5	K	56.67	73.52	90.38	126.97	160.68	194.39	211.27	261.83	312.39
6	K	67.81	87.98	108.14	150.16	190.49	230.82	246.51	307.01	367.50
7	K	78.95	102.43	125.90	173.35	220.30	267.26	281.74	352.18	422.61
8	K	90.09	116.88	143.67	196.53	250.11	303.69	316.98	397.35	477.72
9	K	101.22	131.33	161.43	219.72	279.93	340.13	352.21	442.52	532.83
10	K	112.36	145.78	179.19	242.91	309.74	376.57	387.45	487.70	587.94
11	K	123.50	160.23	196.96	266.09	339.55	413.00	422.68	532.87	643.05
12	K	134.64	174.68	214.72	289.28	369.36	449.44	457.92	578.04	698.16
13	K	145.78	189.13	232.48	312.47	399.17	485.88	493.16	623.21	753.27
14	K	156.92	203.58	250.25	335.65	428.98	522.31	528.39	668.38	808.38
15	K	168.06	218.03	268.01	358.84	458.79	558.75	563.63	713.56	863.49
16	K	179.19	232.48	285.77	382.03	488.61	595.19	598.86	758.73	918.60
17	K	190.33	246.93	303.54	405.21	518.42	631.62	634.10	803.90	973.71
18	K	201.47	261.38	321.30	428.40	548.23	668.06	669.33	849.07	1028.82
19	K	212.61	275.84	339.06	451.59	578.04	704.49	704.57	894.25	1083.93
20	K	223.75	290.29	356.83	474.77	607.85	740.93	739.80	939.42	1139.04
21	K	234.89	304.74	374.59	497.96	637.66	777.37	775.04	984.59	1194.15
22	K	246.02	319.19	392.35	521.15	667.48	813.80	810.27	1029.76	1249.26
23	K	257.16	333.64	410.12	544.33	697.29	850.24	845.51	1074.94	1304.37
24	K	268.30	348.09	427.88	567.52	727.10	886.68	880.74	1120.11	1359.48
25	K	279.44	362.54	445.64	590.71	756.91	923.11	815.98	1165.28	1414.58
26	K	290.58	376.99	463.40	613.90	786.72	959.55	951.21	1210.45	1469.69
27	K	301.72	391.44	481.17	637.08	816.53	995.99	986.45	1255.63	1524.80
28	K	312.85	405.89	498.93	660.27	846.35	1032.42	1021.68	1300.80	1579.91
29	K	323.99	420.34	516.69	683.46	876.16	1068.86	1056.92	1345.97	1635.02
30	K	335.13	434.79	534.46	706.64	905.97	1105.30	1092.15	1391.14	1690.13

Explanation:

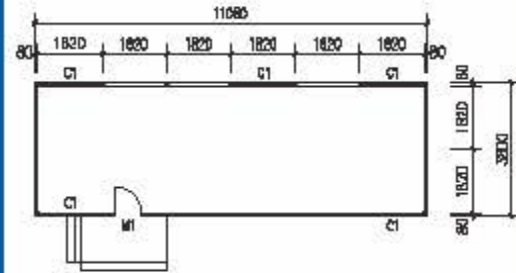
The two floors house has two pcs stair in standard. Each side of gable wall has one. The stair's area is 4.5m²/pc. The three floor stair is 16m²/pc. The area will increase or reduce according to stair's quantity

The regular of area counting way:

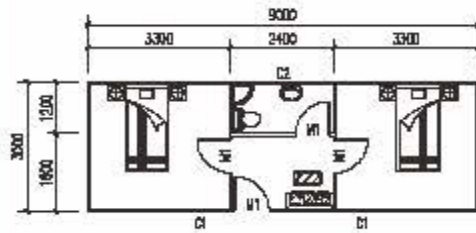
1. The house area: Exterior wall length x exterior wall width x floor number
2. Standard stair: 4.5m²/pc, corner stair (special for three floor house): 16m²/pc
3. Awning area: house shadow area x 0.5
4. Aisle board area: house shadow area
5. Total area = (1) + (2) + (3) + (4)
6. Expect the no standard house, this regular is suitable for all the house
7. Above regular also is fit for the flat style house

Houses with steel base

Meeting room 2KX6KX3P



Sudan house 3Mx9Mx3H



Singapore office



T house

Two floor dormitory



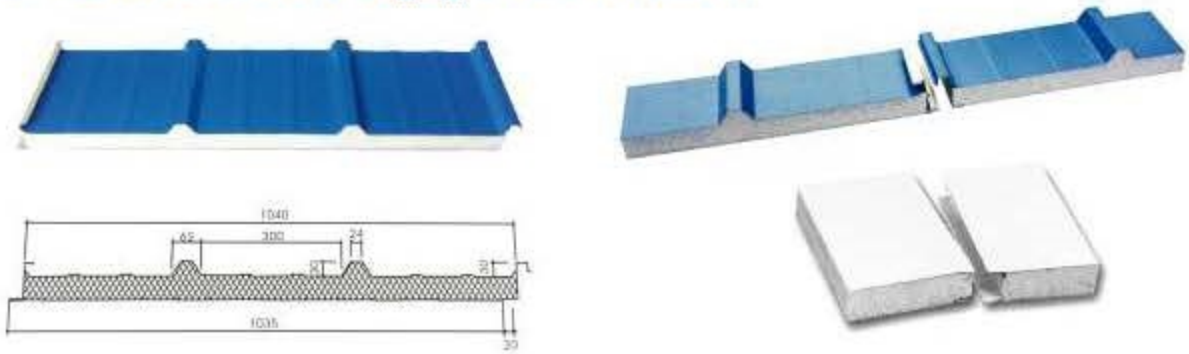
Two floor steel structure



Two floor Accommodation



Material application



Polystyrene sandwich panel

Polystyrene sandwich panel is a new type of building material with EPS layer as the core, the color steel plates on both side externally. It is pressed by computer controlling color steel molding machine with high strength glue.

Feature: Light weight, 10-14kg/m², convenient installation, short construction period, low building cost, high bearing capability, strong integrative stiffness and excellent strength.

Flexible usage, the length can be determined by requirements of project design as well as installation and transportation condition. It is of good heat and sound proofing as well as moisture-proofing, the average coefficient of heat conductivity is 0.032kcal/m.h.C

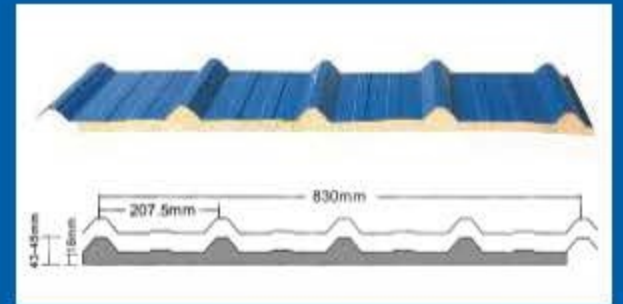


FORM of the spans of polystyrene sandwich panel house (Deformation controlled under U240)

跨厚/ Span (m)	板厚/ Thickness (mm)	50	75	100	150	200	250
25		5.19	6.91	8.09	9.91	11.45	12.80
50		3.74	4.96	5.72	7.01	8.09	9.05
100		2.53	3.49	4.05	4.96	5.72	6.40
150		1.90	2.70	3.31	4.05	4.57	5.23
200		1.40	2.10	2.80	3.51	4.05	4.53
250		1.10	1.70	2.30	3.13	3.62	4.05
300		0.90	1.40	1.90	2.86	3.31	3.70

PU panel

PU foam panel is one of the popular roof material in the field. PU foam panel is not only beautiful in appearance, light in weight and convenient for installing, but also possesses the advantages of specially high heat-proofing and sound-proofing, and the long service life comparing with the other products in the same field.



Rock wool sandwich panel

Feature

Rock wool sandwich panel has a good feature in noise reduction specially suitable for the place where is high requirements in the sound-insulation. Via testing according to ISO 717/82 and UNI18270/7 standards, selecting the rock wool which with the density 105kg/CBM and the thickness 50-100mm as the core, the sound coefficient will achieve RW=29-30dB.

Excellent fire resistance:

The ability of the fire-proofing of the rock wool sandwich panel is over 1000 for the rock wool is the non-fire material. According to the test of the Italy authority organization Istituto Giordano S.P.A, the fireproofing margin of rock wool sandwich panel is as below: (take the wall panel as the example)
 Thickness: 100mm(REI) 120 minutes
 75mm(REI) 60minutes
 50mm(REI) 30minutes

The fireproof degree of rock wool panels of 50-75-100mm are 0/1 (with their fire-proof degrees from high to low is 0,1,2,3,4,5)



Anti hail



Waterproof



Fireproof

Polyurethane sandwich panel



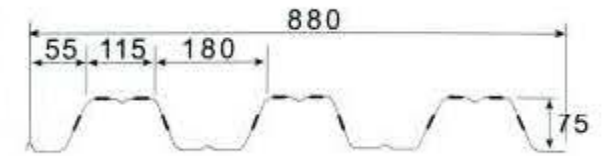
Structure: Upper and lower metal exterior sheets sandwich with the PU foamed. The exterior metal sheet can be color steel sheet, aluminum&zinc coated steel sheet, aluminum coated steel sheet and embossed color steel sheet, etc. PU sandwich panel is the best heat resisting& maintaining material acknowledged in the world at present.

Feature: Light weight: 10-14kg/m³
Good heat resisting: 0.0175kcal/m.h.c. Strong integrative stiffness and excellent strength.

Reasonable and simple connection: For using the snap connection, the roof panel avoids the hidden trouble of roof leakage. The wall panel adopts coupling board connection. It takes the beautiful in appearance, economy of spare parts and convenient for construction.

Application range: Factory& work-shop, ware-house, public stadium and gymnasium, villa, cold storage and other buildings.

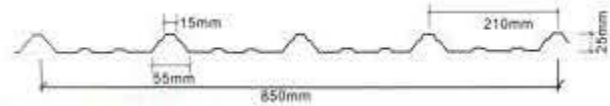
Steel deck



单位/Unit: mm

型 别/ Model	标准宽度/ Standard width(mm)	钢板总厚度/ Steel plates thickness(mm)	单位重量/ Unit weight (kg/ft)	单位面积重/ Weight/s. q. m		断面惯性力矩/ Inertia moment I(mm ⁴ /m)	断面系数/ Section coefficient S(mm ³ /m)
				kg- m ²	kg/坪pyeang		
YD3W75	880	0.80	2.54	9.54	31.55	1001181.38	26274.21
		1.00	3.03	11.37	37.58	1196382.77	31394.91
		1.20	3.61	13.55	44.77	1429643.04	37513.59

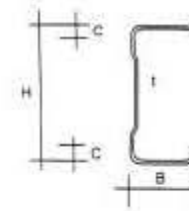
Color corrugated steel sheet



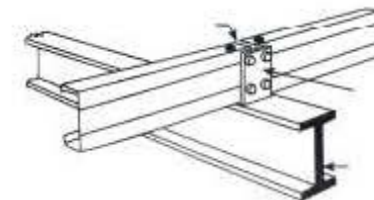
Turbo exhaust ventilator



"C" & "Z" Section steel



"Z" Section steel view drawing



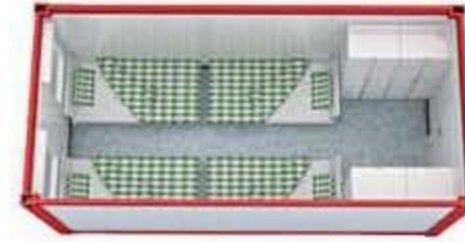
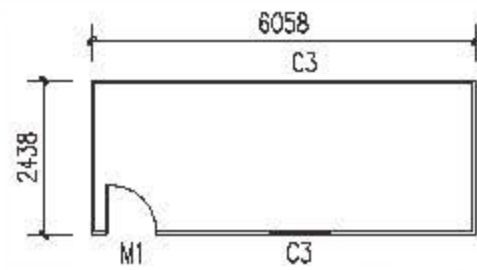
"C" Section steel view drawing



CONTAINER HOUSE

Suit for temporary office, accommodation, soldier camp.

20'GP: 6.056MX2.438MX2.65H



TYPE A



TYPE B



TYPE C



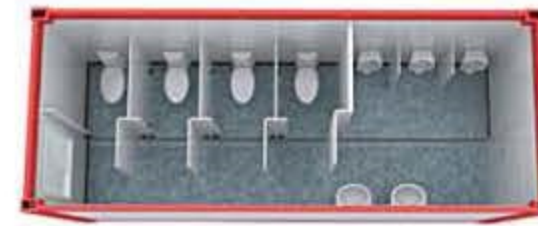
TYPE D



TYPE E



TYPE F



TYPE G



TYPE H

Steel structure

-workshop,warehouse, chicken sheds,Stadium seating,cool room

A: EPS/Rock wool/PU sandwich panel for wall and roof.

B: 0.426mm/0.476mm Galvanized steel sheet for wall and roof.



A

B



Simple villa-Sandwich panel house

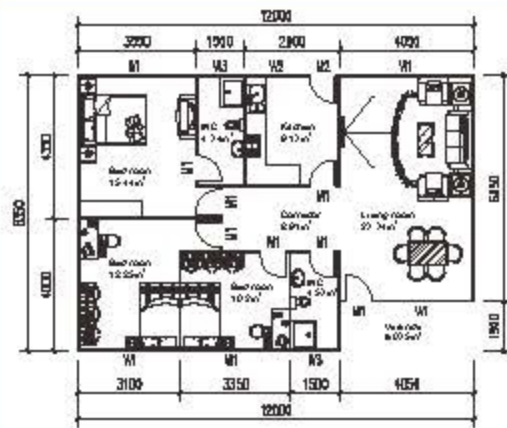
Suit for supervisor dormitory, family house, poor people housing and disaster housing.

Simple villa – 100m², 3 bedrooms

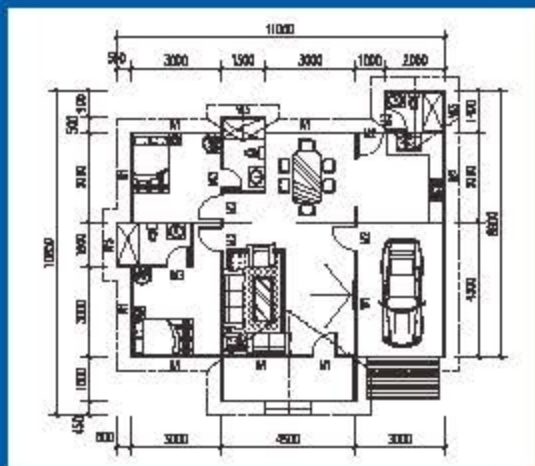


HOT SALE

Simple villa – 100m², 3 bedrooms



Simple villa – 94m², 2 bedrooms



Simple villa – 94m², 2 bedrooms

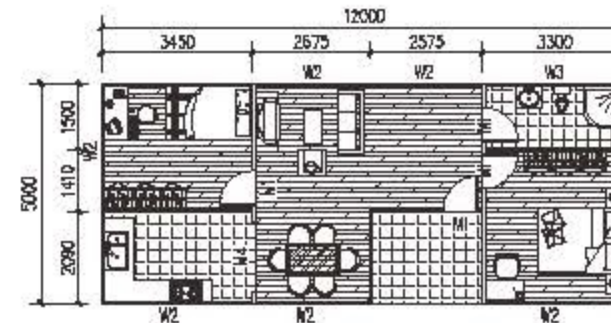


HOT SALE

INTRODUCTION:

- 1、 Steel structure for frame.
- 2、 EPS/Rock wool/PU sandwich panel for wall and roof.
- 3、 Aluminium alloy sliding window and steel door.

Simple villa – 60m², 2 bedrooms



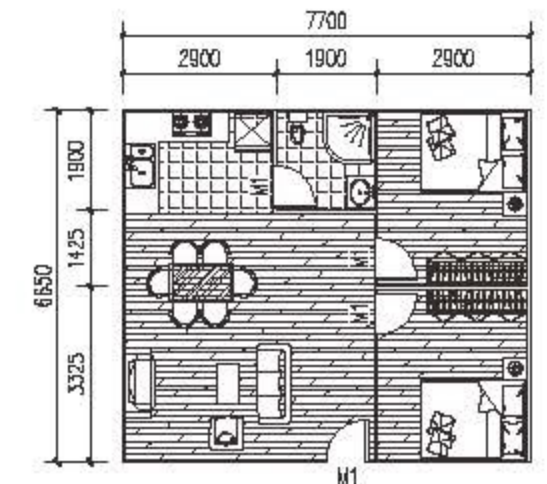
Simple villa – 60m², 2 bedrooms



Simple villa – 51.2m², 2 bedrooms



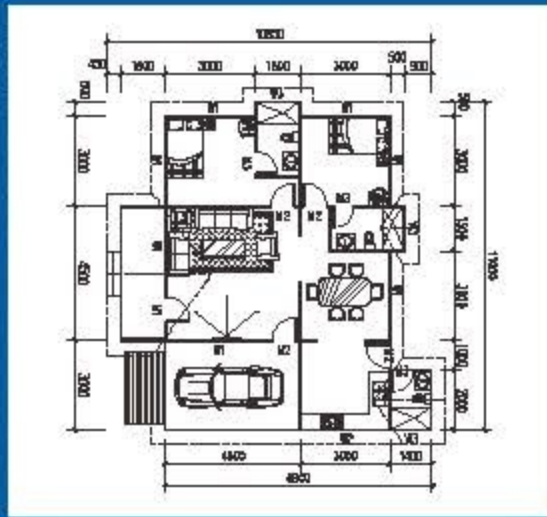
Simple villa – 51.2m², 2 bedrooms



Spring Villa-concrete Villa

Service life is more 30years, suit for cottage house, holiday resort, villa resort.

Indonesia villa 94m² -2 bedrooms



Australia Villa

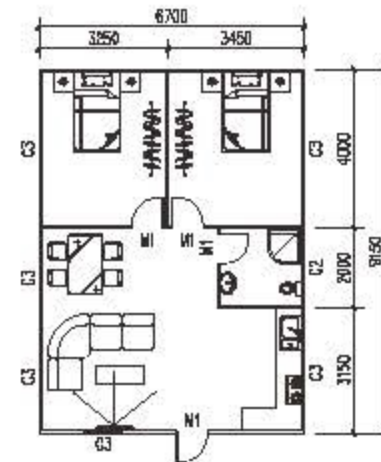
HOT SALE



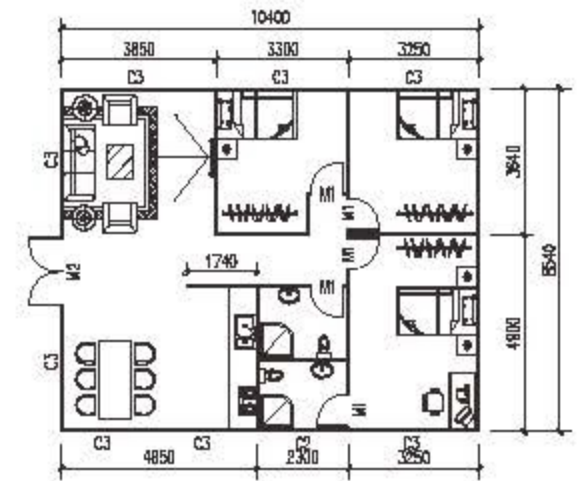
INTRODUCTION:

- 1、 Steel structure for main frame.
- 2、 100mm Concrete panel for external and internal wall.
- 3、 Sandwich panel for roof + Villa tile or asphalt fiber glass shingle.
- 4、 Aluminium alloy sliding window and steel door.
- 5、 Ceramic wall tile decoration outside , painting inside.

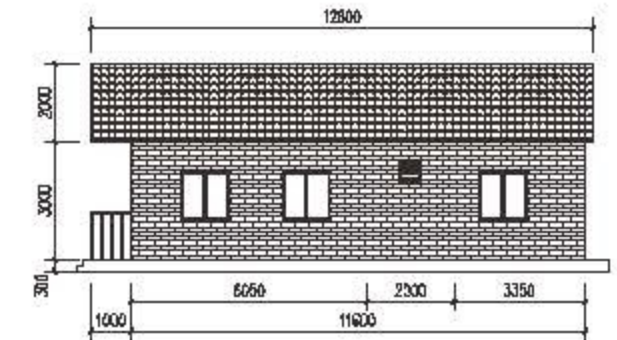
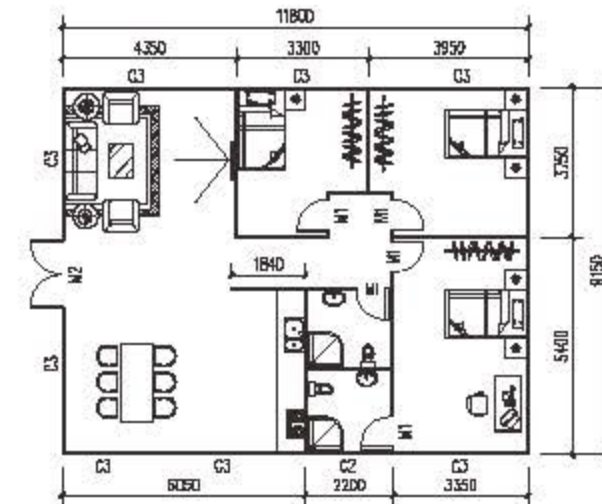
Australia villa 88m² , -2 bedrooms



Australia villa 87.38m² , -3 bedrooms



Australia villa 115.28m² , -3 bedrooms



Common accessories

Door



Window



Floor



Common accessories

Ceiling



Toilet



Toilet



Engineering example



- ① 阿曼官營地項目 / UAE labour camp project
- ② 東帝力辦公室項目 / Timor leste office project
- ③ 泰國辦公室項目 / Thailand office project
- ④ 寮國營地項目 / Laos labour camp project
- ⑤ 泰國工人宿舍營地項目 / Thailand worker dormitory project
- ⑥ 印尼宿舍項目工程 / Indonesia worker dormitory project



Engineering example

Earthquake disaster housing project.

Suit for Disaster relief house and Temporary relocation settling house.



Panorama in the disaster area



Sichuan earthquake rebuild project



Laos worker camp project



Gullin K house project



Qatar K house project



Thailand K-house project



Double Floor K House
Project Gallery



Qatar K house project



Saudi K house project



Saudi K house project



Qatar K house project



China workshop project



Indonesia warehouse project

Engineering example



China workshop project

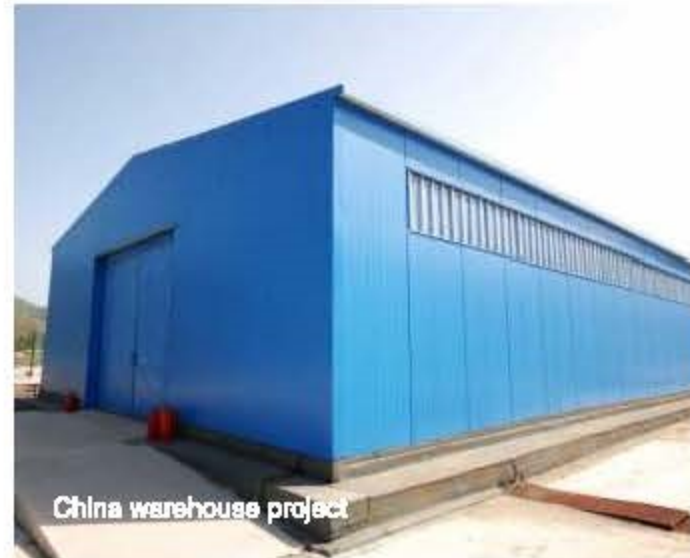
1. Workshop
2. Warehouse
3. Chicken sheds



Mozambique warehouse project



Senegal Chicken sheds project



China warehouse project



China warehouse project

Engineering example

Villa resort project



Summer villa



India spring villa project



India spring villa project



India spring villa project



India spring villa project



Brazil Australia villa



PNG double floor



PNG double floor villa