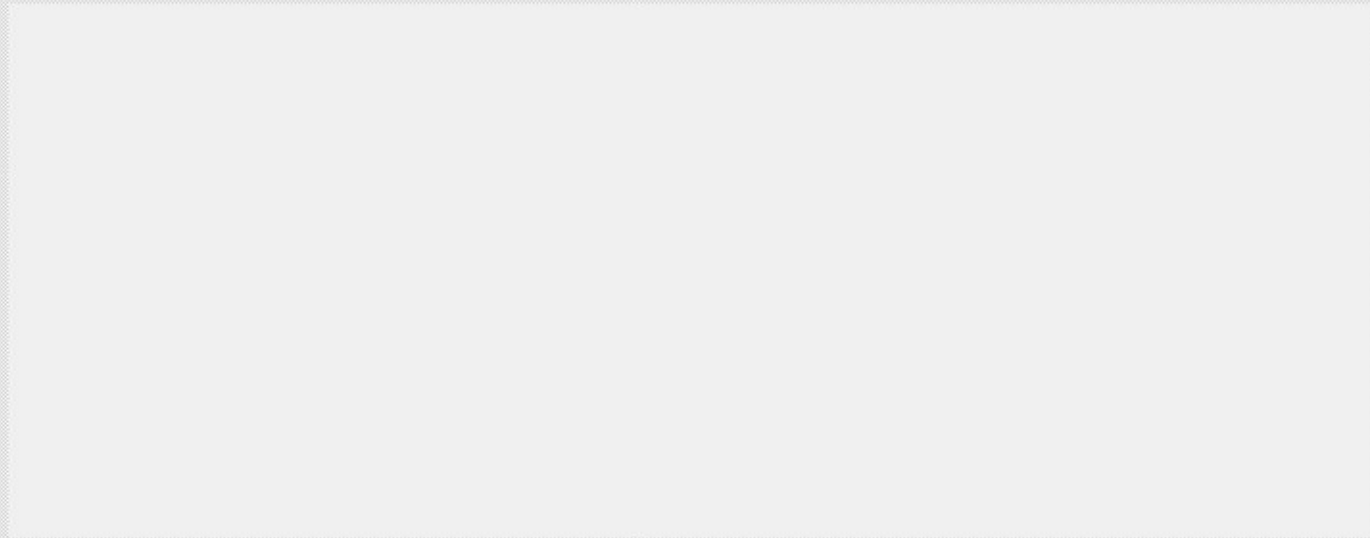
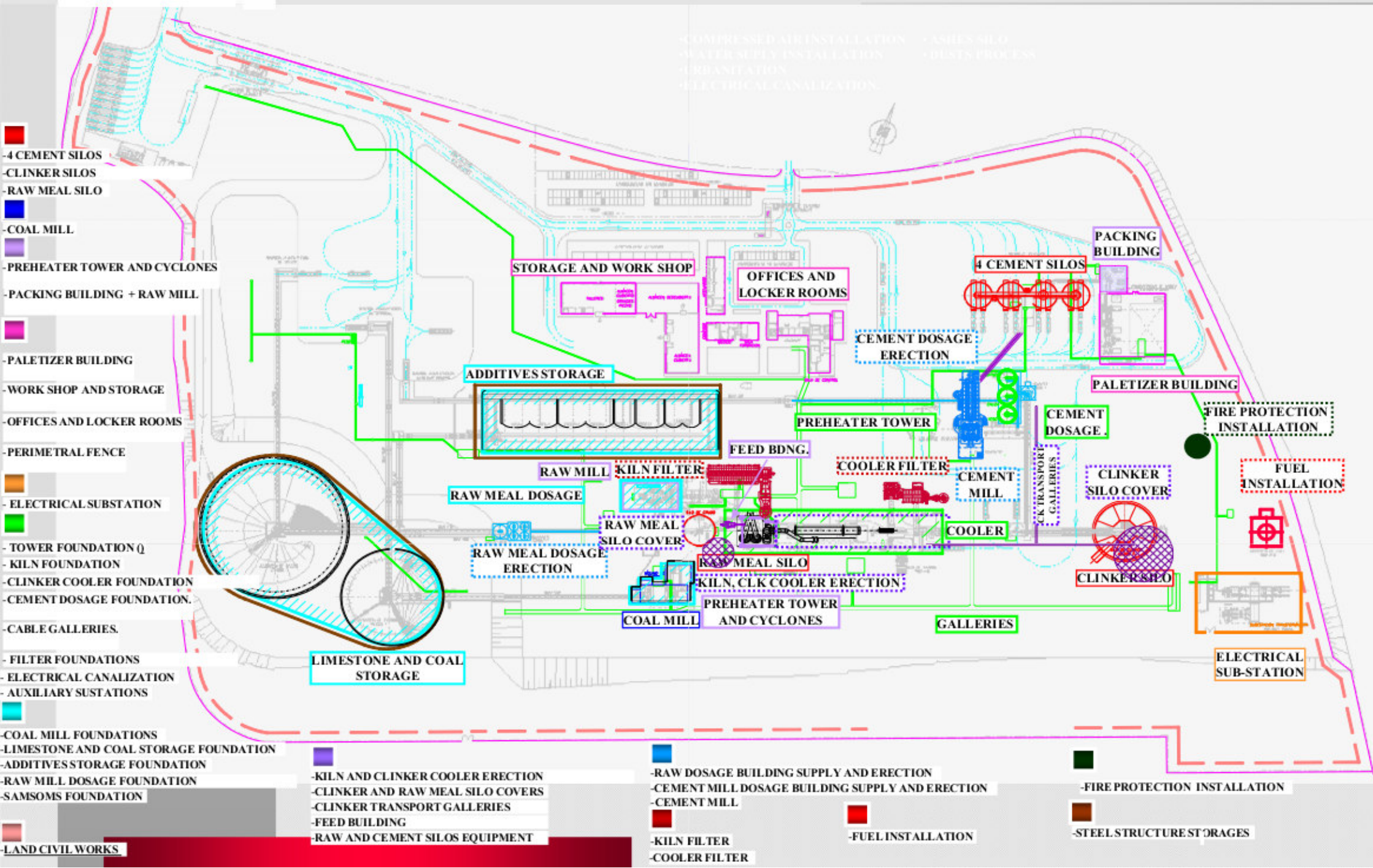


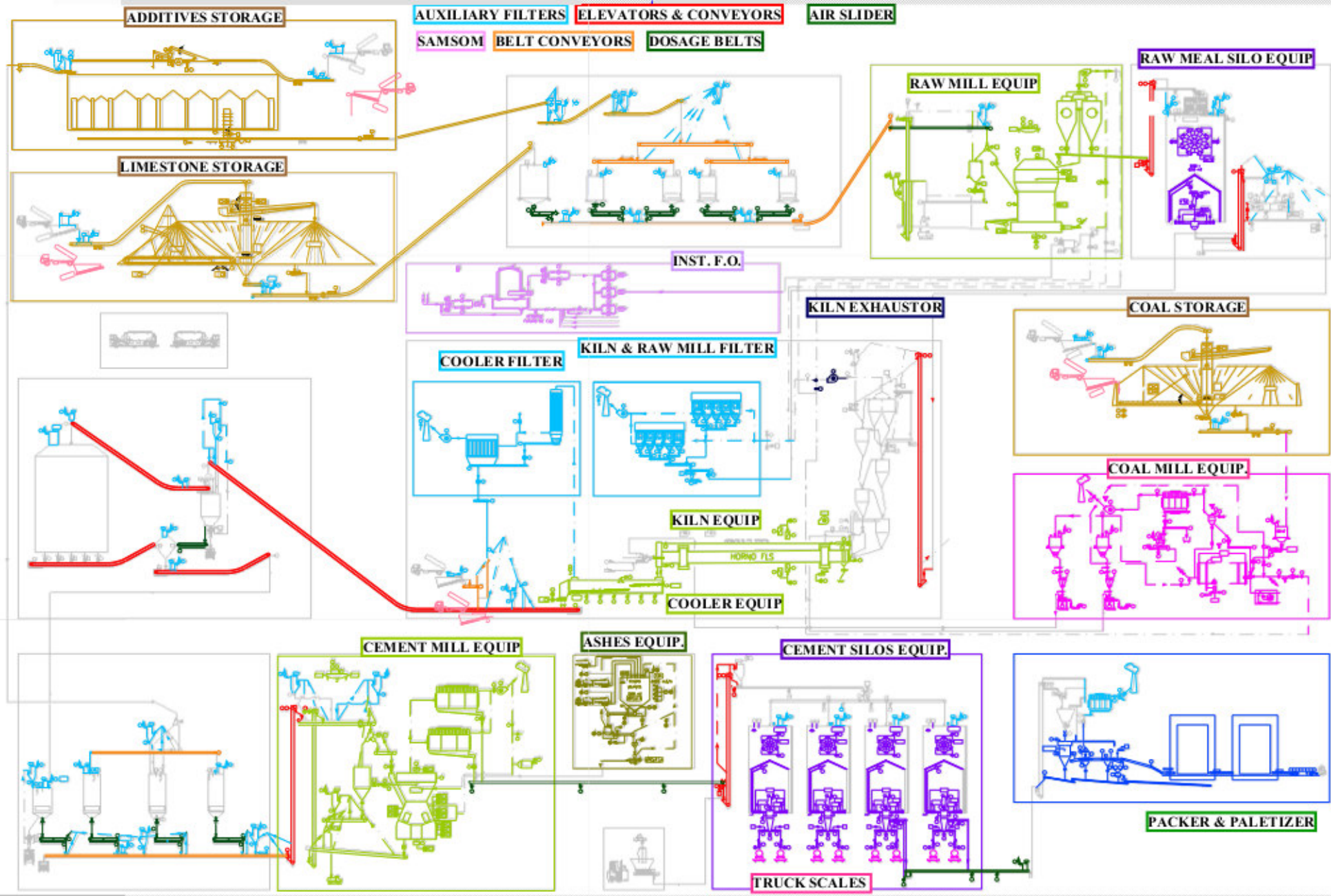
New 1 Million Tons per Year Cement Line





“New cement plant Assets”
Capacity: 1 Million Ton/year





Equipment



Equipment

PICTURES



Commercial Offer

SUBJECT: Commercial Offer for 1 million Ton per Year New cement line Assets

Dear Sirs,

Please find below our offer for the 1 million Ton per Year New cement line .

The packing list details the equipment which is sold on an “as is, where is” basis.

We can offer all of the necessary follow up services to move and put into operation subject to suitable contract negotiations.

We are able to bring reputable world renowned companies to assist in the project.

The assets are sold on a first come first served basis.

Title will pass to the buyer when the full contract amount has been paid.

Commercial Offer

Programme.

Engage USI for the project.

Buy the assets.

Dismantling, Transport and Ship to the new site.

Build and commission (Subject to a separate contract.).

Hand Over.

Payment.

USI would recommend at signing of the contract a non refundable deposit of 10 % of the contract value is paid, to secure the assets.

The full payment of the assets purchase price prior to equipment leaving the storage facility or within 1 month of signing the contract which ever is the shorter.

Conclusion

USI is experienced in the movement of used equipment and will control the project up to delivery.

We hope that this meets with your approval, and look forward to your instructions on this matter.

Commercial Offer

Planned Delivery.

The assets is immediately available, and we anticipate a phased delivery to the new site starting 3 months from contract signature.

Global Cost.

The cost of the assets on request, “as is where is”

The cost comparison against a similar facility is approximately half of a new plant, based on an assumed scope. The time to product production can also be shortened by 25-30%.

The Engineering Study will outline the program.

The Engineering Study.

To match your requirements against the current assets design, it is planned to produce an Engineering Study.

This study will detail all modifications, new plant and cost and time schedules to bring the assets on line at its new location.

It is envisaged that the Engineering Study will take 2 – 3 months.

Confidential

This document is confidential. Accordingly, it should not be copied, distributed, published or reproduced, in whole or in part, or disclosed by any recipient to any other person. Neither USI Systems nor any of its affiliates makes any representation or warranty, express or implied, as to the accuracy or completeness of the information contained in this document and any liability therefore (including in respect of direct, indirect or consequential loss or damage) is expressly disclaimed. This document does not purport to contain all of the information that may be required to evaluate any potential transaction and should not be relied on in connection with any such potential transaction.