

BRAVO

# IT'S COUPE SUV

2021 CONQUER ALL TERRAIN

Overseas Edition

BRAVO SUV





A woman with short dark hair, wearing a black coat and white sneakers, is leaning against the front of a silver SUV. The car is parked on a paved path next to a dense green hedge. The background shows trees with yellowing leaves, suggesting an autumn setting. The overall scene is bright and clear.

BR AVO

*ATTRACTIVE APPEARANCE  
CONQUER PRIDE WITH CHARM*

BR AVO





## **RIGHT' HAND DRIVE WE'RE HERE FOR THAT**



**28 %  
Global road**



**2 billion  
people**

twenty-eight percent of the world's  
passable roads are driven on the left

It covers two billion people around the world





































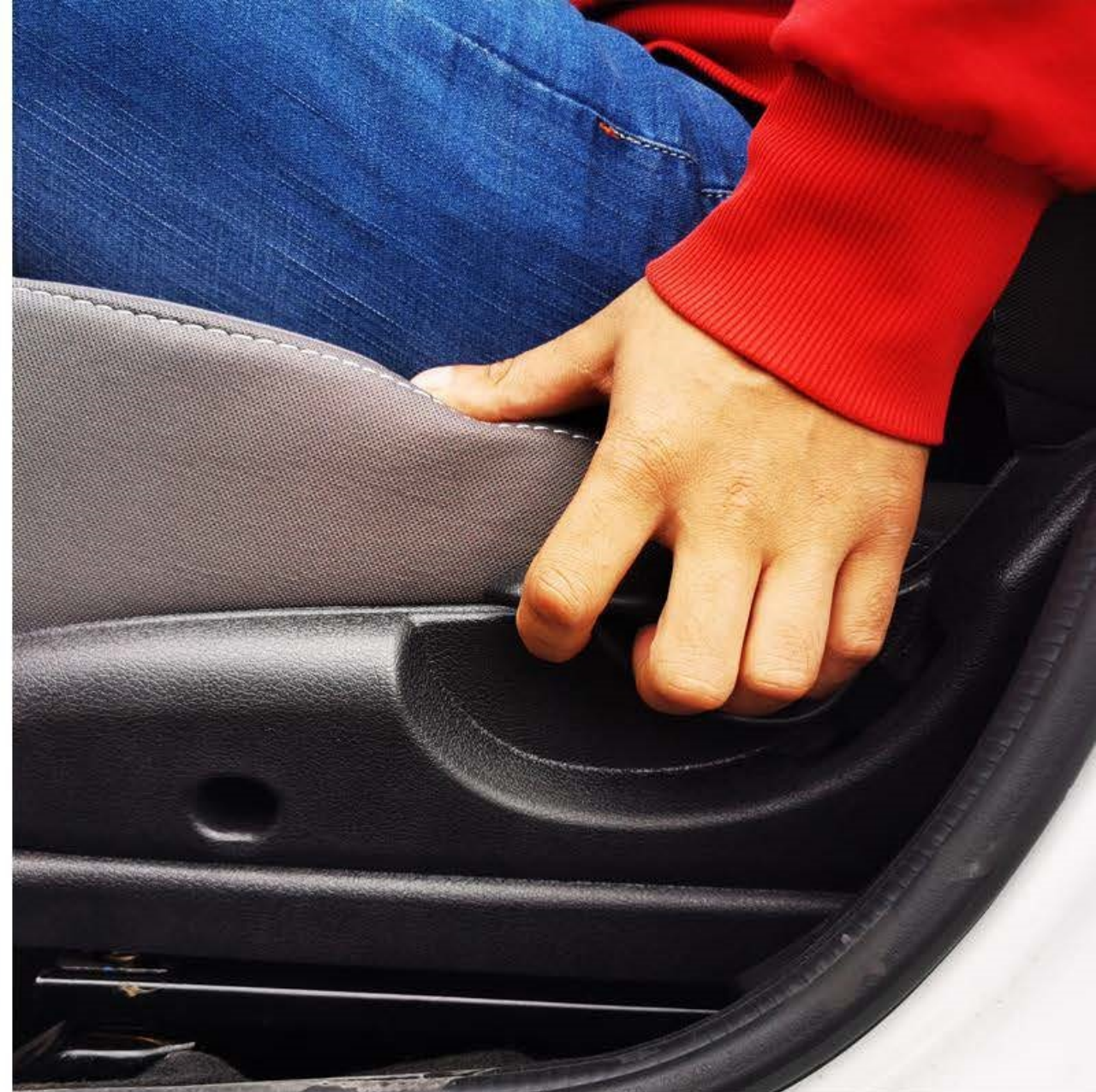








Shift operation



Adjust the seat





LCD backlit instrument panel





Vehicle entertainment system



Light control switch



Wiper control switch





Double color knitted seat



Sunscreen Shade



Front seat belt

















D- Drive;      power saving mode  
N- Neutral;      R- Reverse

Back door escape switch





Remote control lock



Child safety lock



Child safety lock

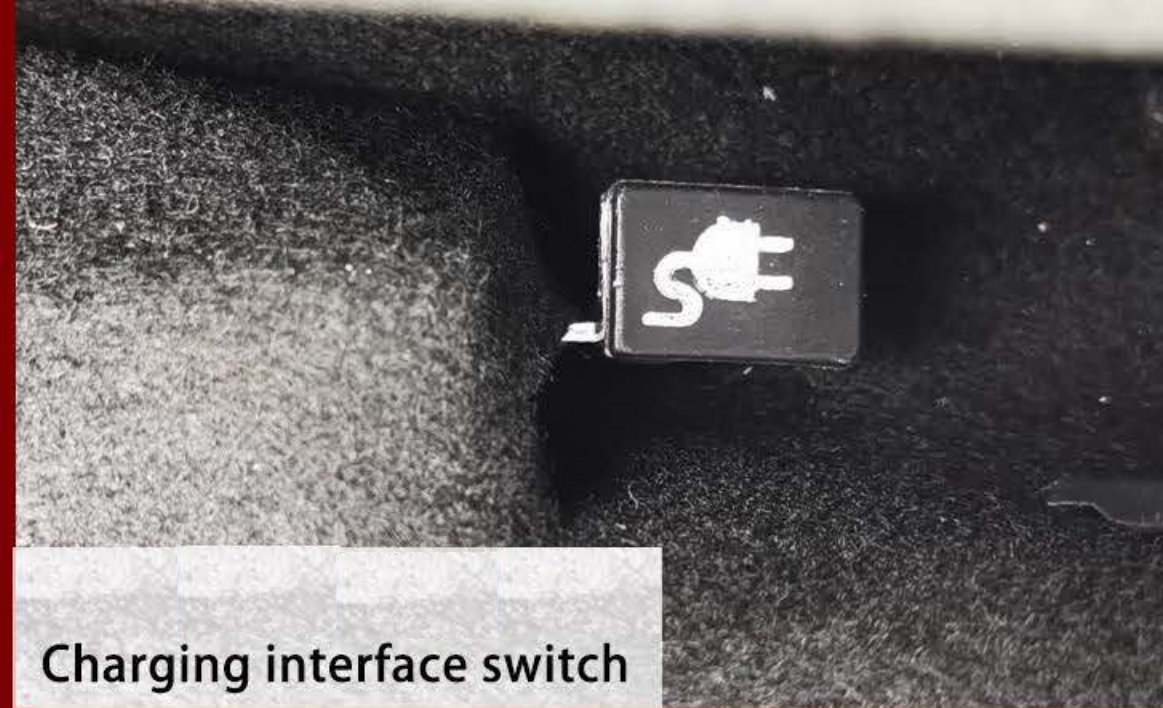




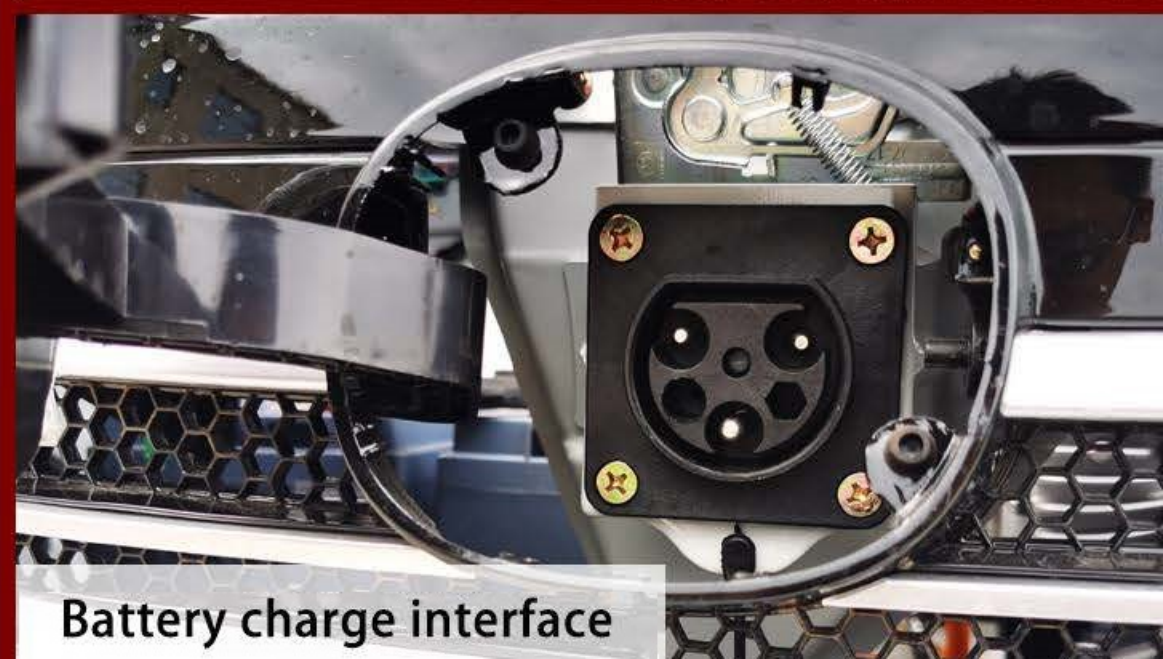




Forward

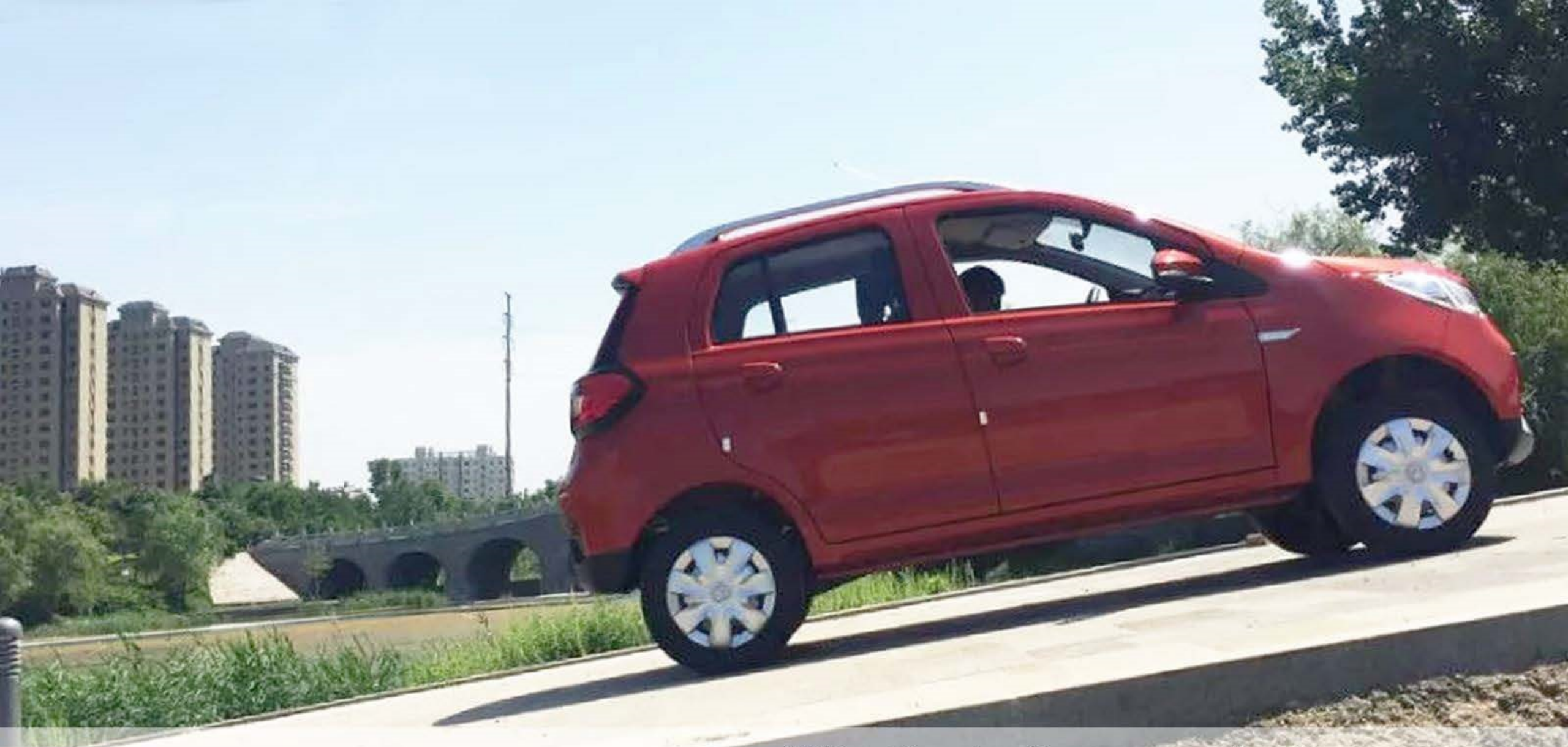


Charging interface switch



Battery charge interface





Excellent in power,  
stability and operation

- IED - Chassis adjustment technology
- HES - Continuous efficiency drive system
- EPS - Electronic power steering system







## Vehicle parameter

Vehicle category	Low-speed electric vehicle
Vehicle model	FH-BEV-V7
Driver position	Left driving
Body structure	Load-bearing metal shell
Overall dimensions (L*W*H)mm	3468*1568*1570
Wheel Base (mm)	2297
Ground clearance (mm)	170
Curb Weight (kg)	790
Rated Passengers	4 people
Maximum depth of wading (mm)	≤ 400
Luggage capacity (L)	550



## 性能指标 Performance index

最高车速 Show the maximum speed (km/h)	Eco Mode - 40 ; Drange - 60;
续航里程 Driving Mileage(Km)	Eco Mode (130-150 ); Drange (100-120);
最大爬坡度Maximum climbing angle (%)	≥28
充电方式 Charging mode	慢充Slow charge
充电电压 Input voltage (VAC)	90-265VAC
充电时间 Charging time (h)	8-10
百公里耗电量 Power consumption (Kwh/100Km)	5-7
电动机 Electromotor	4KW/ AC asynchronous drive motor
控制器 controller	72V / 350A
蓄电池类型Battery type	铅酸免维护 Maintenance Free Battery DIN
蓄电池容量/数量 Battery capacity/quantity	12V100AH*6PCS



## 底盘&操控系统 Chassis & control system

前悬架类型 Front suspension type	麦弗逊式独立悬架 McPherson suspension
后悬架类型 Rear suspension type	拖曳臂式非独立悬架 Drag arm suspension
前制动器类型 Front brake type	碟刹 Disc brake
后制动器类型 Rear brake type	鼓刹 Drum brake
驻车制动类型 Parking brake type	手刹 Hand brake
轮胎规格 Tire specification	155/70R13
轮毂材质 Hub material	铝合金 Aluminium alloy
刹车助力类型 Brake assist type	真空液压式 Vacuum hydraulic
转向助力类型 Steering assistance	电动式 Electric power steering
变速类型 Variable speed type	无极变速 Multitronic
驾驶员位置 Driver position	左驾驶 Left hand drive / 右驾驶 Right Hand Drive



标准配置 Standard Configuration	安全配置 Security configuration
中控门锁 Vehicle central control lock	方向盘锁 Steering wheel lock
遥控钥匙 Remote key	上坡辅助 Hill Start Assist
倒车影像 Rear View Camera	联动式刹车系统 Combination Braking System
电动升降门窗 Electric lifting doors and windows	第三刹车灯 Third brake lights
前排阅读灯 Top reading lamp	电机高温保护 Motor high temperature protection
多语种操作菜单 Multilingual operation menu	故障报警 Failure beep alarm
USB/手机充电 USB interface/Mobile phone charging port	手刹断电 Brake power break
音乐/视频/收音机 Music/Video/ Radio	充电防漏电 Charging to prevent leakage
整体翻转后排座椅 Flip the back seat as a whole	满电自动断电 Charging automatic power failure
可调节外后视镜 Adjustable external rearview mirror	输出短路保护 Short circuit protection
暖风除霜 Defrosting of warm air	充电温度补偿 Temperature compensation



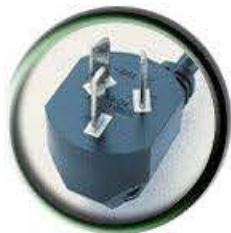


## SMC Power management system

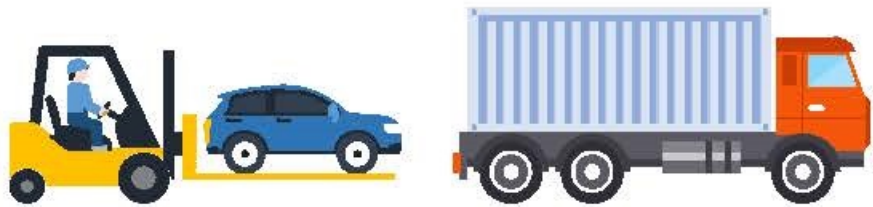
**90-265 VOLTAGE RANGE**

Compatible with most of the world's electricity input voltage, do not have to buy a separate converter. Plug and play.

According to the export countries, adapt different standards of power plug

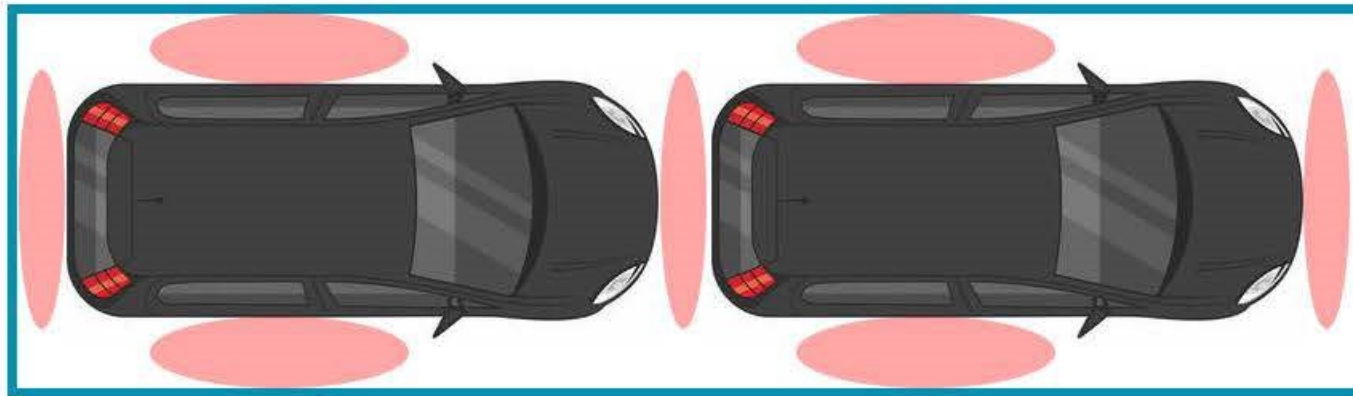






## Packing and shipping

- Quantity: 40HC/HQ -4Unit;
- Packaging: Steel Pallet, antiskid device;
- land carriage: The buyer is responsible for.



 Dunnage air bag



 Antiskid device