



# Electro-hydraulic Pop-Up Container House

For: Bar, Restaurant, Showroom, Studio, Shop, Snack bar...

# Various Commercial Purposes Integrated Service Provider.



# CONTENT



01 Figures

02 Drawings

03 Material and Price List

04 More Options

05 Load and Ship



**01**

# Figure of Pop-up Container

**HY-P Series**



# Electrical-Hydraulic System Auto Control Pop-up Container (HY-P series)

The Electrical-Hydraulic System Auto Control Pop-up Container (HY-P series) is a compact and mobile unit that converted from new 20GP/20HQ/40GP/40HQ and uncovers a fully multifunction building at the touch of a button. Usually, the shipping container transforms into a 3 times when the walls of the container are folded back.

The Electrical-Hydraulic Pop-up containers are popular as a magic space in the middle of the city, in the business street or scenic spot and free to move.



## Container Frame

We always insist on using **new customized containers** to convert to your house. They are made of **Corten A steel** under SGS standard, important, they are ready to cut and welding from your design before painting also the same material and quality as the ISO maritime container.

They are different from the most way in the market to cut a new maritime container then paint(this way also would damage the original paint of maritime container and reduce the life span of the house).

For the materials, we are always insisted on high quality, too.



## Extension: **What's STEEL CORTEN-A**

**Corten A** is a representative steel type of the Cu-P series steel in the United States. They are low-alloy high-strength atmospheric corrosion-resistant structural steels, and are called weathering steels, too.

Weather-resistant steel, that is, atmospheric corrosion-resistant steel, is a series of low-alloy steels between ordinary steel and stainless steel. It is good properties in drawing, forming, welding, abrasion, high temperature, fatigue resistance, etc.

**Weather resistance:** 2-8 times that of carbon steel

**Printability:** 1.5-10 times that of carbon steel.

At the same time, it has the characteristics of rust resistance, corrosion resistance, and life extension, thinning and consumption reduction, labor-saving, and energy saving.

Weathering steel is mainly used for steel structures such as railways, vehicles, bridges, and towers that have been exposed to the atmosphere for a long time.

It is used to manufacture structural parts such as **containers**, railway vehicles, petroleum derricks, seaport buildings, oil platforms and containers containing hydrogen sulfide corrosive media.



## Container Frame



- **New Customized** ISO shipping container, new frame, new paint.
- **No** second shipping container to modified.
- **Hysun** containers are **longer life span** and **less maintain**.
- Meet **CSC** standard. Valid to issue CSC certification.
- **SOC**(Shipper Owner Container) to worldwide.



After Paint

Before  
Paint





# After-Sales Service

offers **1 year warranty** and **3 year guarantee** for all of Hysun Electrical-Hydraulic System Pop-up Container (HY-P series).

1. For 1 year warranty : offer free maintain and free material replace.
2. For 5 year guarantee: offer maintain and material replace in cost.

Included: container frame, painting, floor, ceiling, Electrical-Hydraulic System, electricity, window and door(if have)

Excluded: The furniture and customized items would under our agreement.



**What do you image for a pop-up container?**

*A coffee house?*

*A beer bar?*

*A shop or a studio?*

*A exhibition container?*

...

**It can meet all your dreams.**

# What it can be

Coffee Bar

---

Beer Bar

---

Showroom



Restaurant

---

Snack Bar

---

Studio

It is just what you image

It is just what you want

It is just the right one for you

# Need more space, an original terrace?

Make the choice of the container-terrace and create in record time a terrace under **10ft** container(7.3m<sup>2</sup>), **20ft** container(14.7m<sup>2</sup>) or **40ft** container(29.4m<sup>2</sup>).

- ✓ Ready to use and easy delivery.
  - ✓ Container events offer a terrace plug-and-play.
  - ✓ Available to one extra terrace, 2 extra terraces and 3 extra terrace also the rooftop.
  - ✓ The floor, the wall, and the ceiling also electricity are ready to use.
  - ✓ More customized item, the container can be arranged and delivered :
    - w/wo color or logo
    - w/wo side walls
    - w/wo different style doors
    - customized the light/outlet place
    - w/wo furniture
    - w/wo the facility
- Etc....

# FEATURE

01



Customized Design Welcome

02



A Turn Key House

03



Absolute New Container



# Technical Data

(default for 20ft container)

- Weight approx. 3.5-4.0 tons
- Close size: 20GP-Length: 6.055\*2.438\*2591 mm  
20HQ-Length: 6.055\*2.438\*2896 mm
- Open size: 1 side pop-up option: 6055\*4848\*2591/2896mm  
2 side pop-up option: 6055\*7258\*2591/2896mm  
3 side pop-up option: 7258\*7000\*2591/2896mm
- Color: all RAL tones
- Electricity: CE, UL, AZ etc. valid.



# Coffee House



# Beer Bar



# Shop



# Showroom



# VR Center



# Snack Bar



# Figure

**20HQ**  
2591mm is not high enough? We can use 20HQ for you, 2896mm.



## HIGHLIGHT

**New**  
We use all new container for you, don't worry about life span.

**Customized**  
Layout, color, light...All under your demand.



**SOC**  
We arrange the ship as SOC type to overworld.



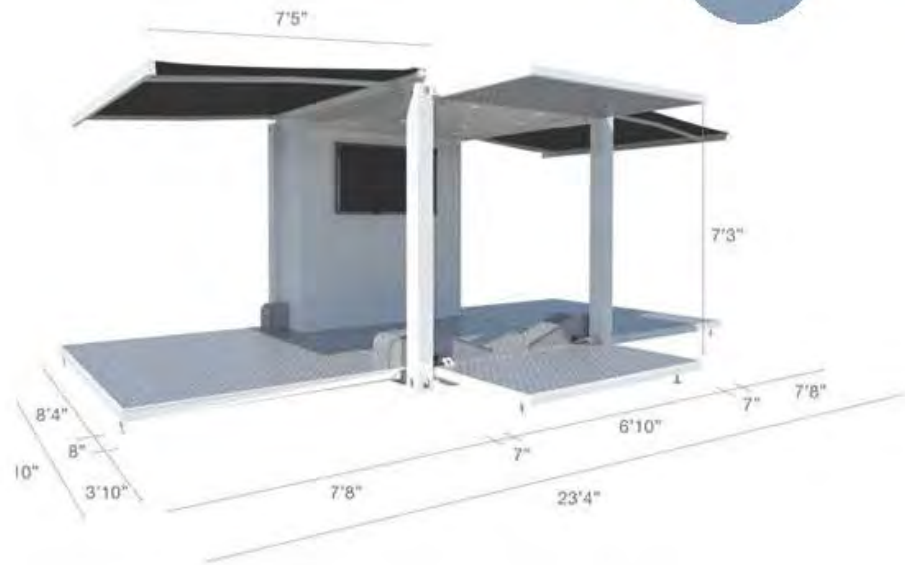
**02**

# **Drawing of Pop-up Container**

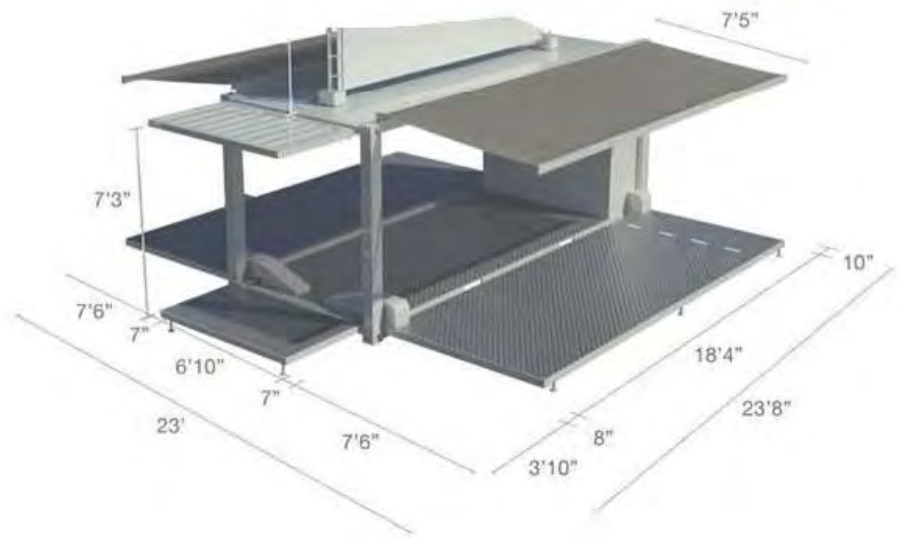
**HY-P Series**



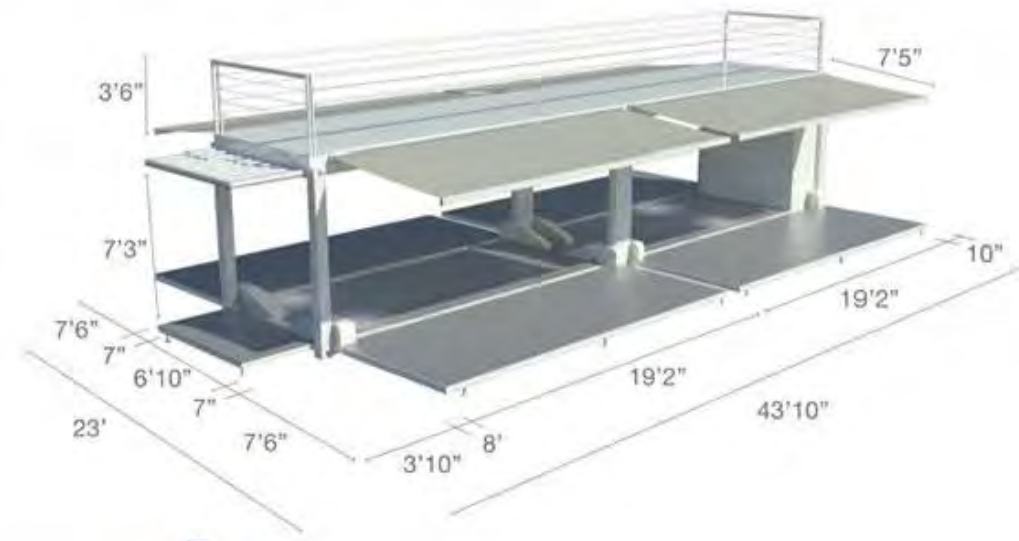
# 10ft Pop Up Container



# 20ft Pop Up Container



# 40ft Pop Up Container



# More Style for your idea



# More Style for your idea





**03**

# **Material and Price List**

## **HY-P Series**

# General Info

## Standard

- 1\*20GP Containers
- Drawing and engineering
- Electro-hydraulic flying wing
- Internal and external paint
- Wall and ceiling decoration
- Insulation
- Electrical system
- Flooring
- Paint: All RAL available

### OPTIONS

Update to 20HQ  
Window and door upgrade  
Rooftop and stair  
Light upgrade  
Flooring upgrade  
More items pls contact us



### ADDITIONAL

Delivery  
Installation Guide  
Fire sprinkler  
Furniture  
AD board/design

# How to get a unique pop up container

**Step-1:** Make a customized container under ISO maritime container and fix electro-hydraulic system. Painting after all frame and electro-hydraulic finished.



**Step-2:** Do the electricity, flooring, ceiling and other decoration worker under client's demands.

**Step-3:** Finisied. Ready to ship. All of our containers are valid to SOC shipment. (SOC: shipper owner container.)







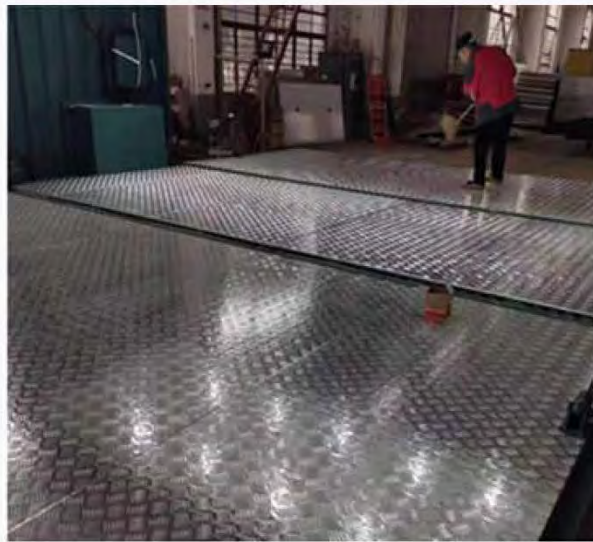
# Electrical- Hydraulic System

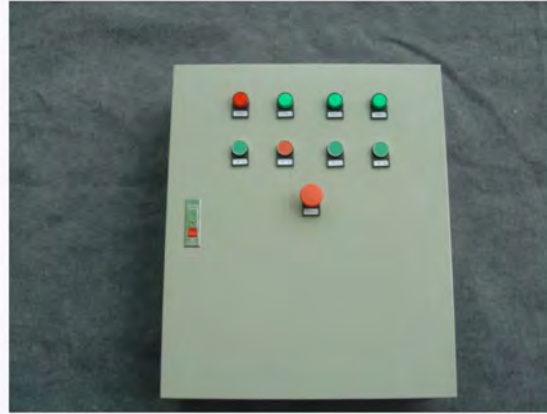
install the system  
before painting.



# Interior Decoration

Default with Alu flooring  
and sandwich panel  
ceiling.  
Welcome to customized  
your container.

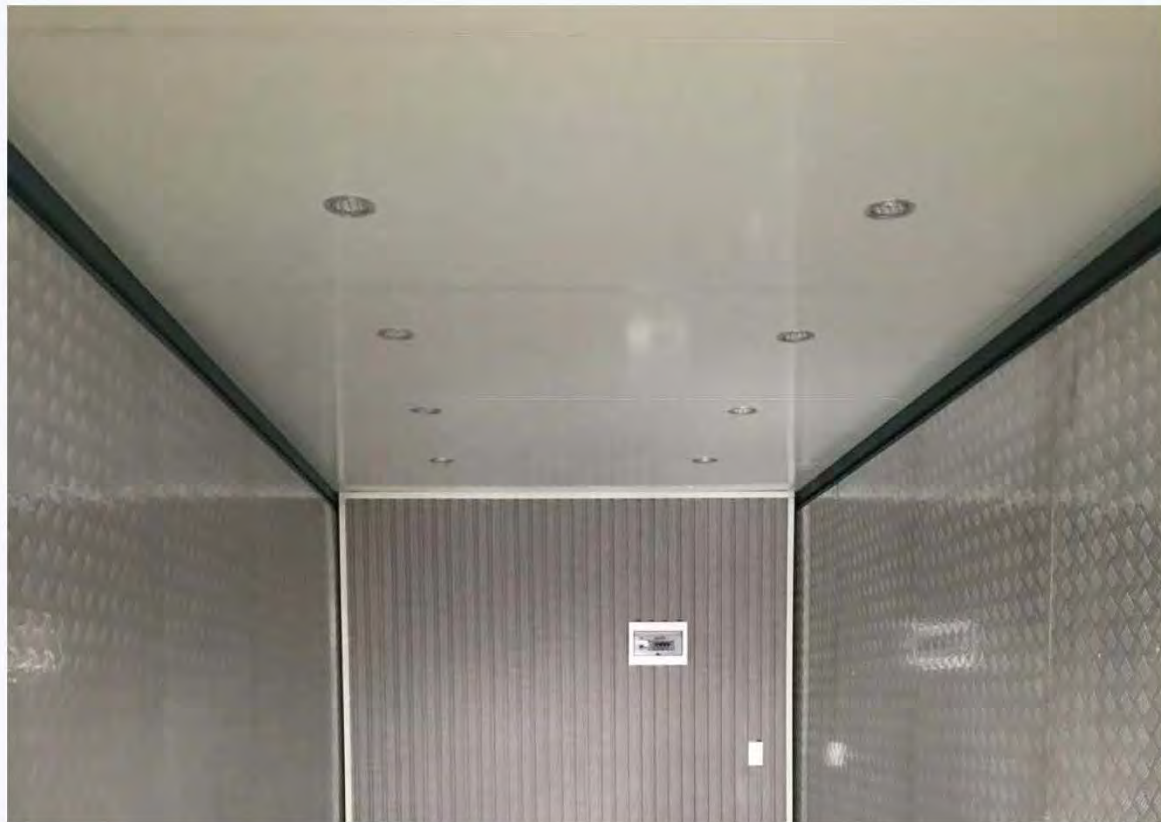




# Auto-Control Plate and hydraulic pipe



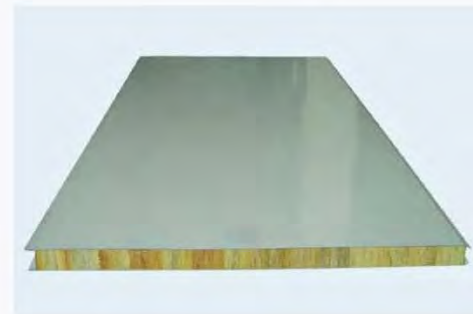
## Default Ceiling Panel



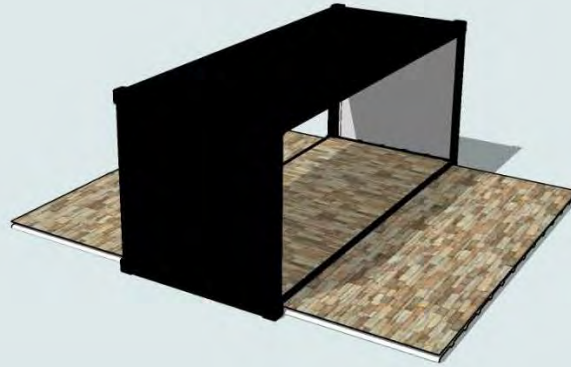
50mm sandwich panel

50mm sandwich panel with 0.5mm pre-coated GI steel sheet external side. RAL9002.

Insulation: 50mm rock wool



# Paint



All RAL color is available.

## Default Flooring



### 1.8mm-2.0mm Alu sheet flooring

Waterproofing, wear-proofing and skid proofing.  
Long life span.  
Suit for kitchen, snack booth and so on.

# Flooring



Option B –WPC floor

Suit for outdoor

Add your  
company  
text



# Flooring



Option C :  
Anticorrosive Woods

Suit for outdoor



# Flooring



Option D  
composed wooden floor

Luxury, suit for indoor



# Electricity

focus on the  
details which is invisible.

As this part work is  
more important than  
appearance.



# Electricity Items

## Modified item:



DB box and breaker: per drawing, Legrand. 1 set.



LED light: 5W, hole size 85-90mm,,Legrand. 6 pcs

# Electricity Items

## Modified item:

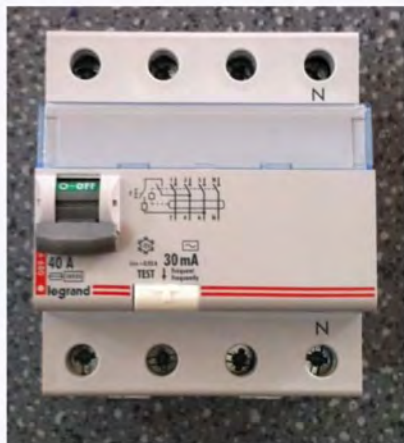


Switch: Legrand. 1 pcs



outlet: Default brand: Legrand.  
(CE,UL,AZ available. )

# Electricity Items





## Hatch for possible passage pipes.

Size: 500\*500mm (may amend according design)

Place: per design.  
Usually on the bottom or top of container.



**04**

# Upgrade items list

# Customized



- 1. Verandah and handrail
- 2. Outdoor umbrella
- 3. Rain shelter

- 4. kitchen cabinet and toilet room
- 7. Furniture

- 5. Stair and handrail
- 6. More items per client's demand





## Stair and rooftop

Stair: Steel

Handrail: steel

Roof top: steel frame +  
WPC floor

Suit for standard 20' or 40' ISO  
container.

More material and style on option.





**05**

# Load and Ship

The finished container house can be transported to any location by ship, train or truck and dropped off there.





The big window or door would be covered with plywood or sandwich panel.





Transport and ship with SOC style.

SOC: Shipper own container



# **Green building for the future**