



GLOBAL CLASS

2000+

has exported its products to over 100 countries and regions, with more than 2000 projects.



ANNUAL OUTPUT

500,000 m²

The annual production capacity for different types of buildings can reach 500,000 square meters.



FACTORY AREA

50000 m²

The Shaoxing factory with a total area of 50,000 square meters and has hundreds of fully automatic mechanized production lines



R&D DESIGN AND TECHNICAL ENGINEER

100+

R&D technology center was founded in 2008. At present, there are over 100 R&D design and technical engineers

FACTORY VIEW



Light gauge steel workshop panorama



Shearing machining



Sandwich panel production line



Automatic electrostatic powder coating line



Double-C machine



Container roof panel



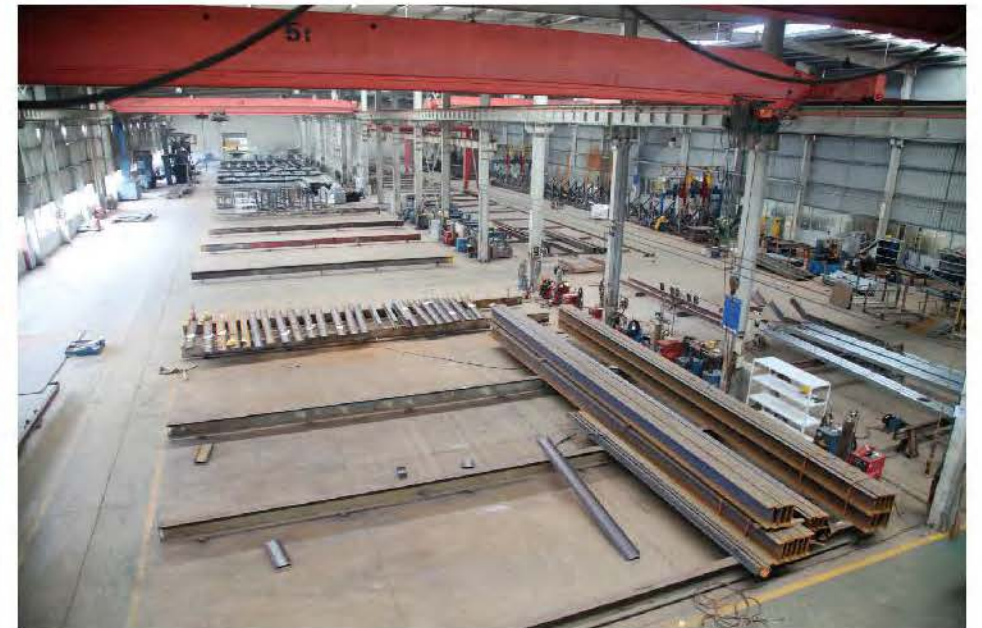
Welding Robot-welding



Container house workshop panorama



Tapping machine



Steel structure building workshop panorama



Roof panel production line



Container house-door production



Punching machine



Sandwich panel production line

DESIGN TEAM

R&D technology center was founded in 2008. At present, employs over 100 design staffs and engineers from local and overseas, which provides custom made design services. And among them here are 9 national registered construction and structure engineers and 3 senior engineers, forming an experienced and skilled professional team and laying a solid foundation to design and technology products utilizes design software such as Sketch Up, Autodesk Revit, AutoCAD architectural design, PKPM, 3D3S, SAP2000 Structural design, Tekla, FrameCad detail structural design etc.



PRODUCT LINES

With its over 20 years of experience in the industry and large mature supply chain including raw materials, kitchen cabinets, and bathroom fixtures & accessories, furniture and other auxiliary items

We will conduct quality assurance assessment to these suppliers, which will assure our customers the most economical, reliable and long lasting materials.

When required, can offer materials with CE, UL, SAA certification.



PRODUCT QC MANAGEMENT

maintains its product advancement ever since the company's establishment, further enhancing product quality in order to gain customers' trust in products. Keeping customers' consideration in mind, always standby customers' side to assure their need and satisfaction are met. All products pass the most stringent testing procedure, code and standards and testing methodology.

Product QC management procedures:



MISSION AND CULTURE

firmly holds "Professionalism and Innovation" as its business moto, and strives to be the expert in your housing solution.

"It creates wealth in the society and added values to the customers. Like the clear sky and clean water, further improving our living and working environment"

Promotes Sincerity, Trust, Improvement, Commitment and Sharing. Sincerity makes things become simple; Trust is the beginning of all capabilities; Advance our mind, knowledge, ability; to be advanced every day and strive for the betterment; Commit – bold to acknowledge our own inabilities, be responsible to ourselves, customers and company; Share the reward, joy, and the experiences; Sharing is a level of higher caring.



“
The Expert Of Housing Solution
”

In 1998, began to produce steel structural parts. In those 10 years, production emphasis has gone through the transformation from the production of door and window fittings to the protecting system of houses, then turns to the building structure, and finally upgraded to integrated housing production. After ten years efforts, the first container house was finished and exported to New Caledonia in 2008. Meanwhile, gradually becomes a leader in the Steel Structure industry. Now, its main products can be divided into four categories, which are steel structure building, light steel villas, container house and Double-C Structure. The annual production capacity for different types of buildings can reach 500,000 square meters.



PRODUCT

CONTAINER HOUSE

container units are modular with the use of steel structural frame and thermal resistant material. This energy efficient product is commonly used in Construction camp site, Public building, Residential units and Special application areas.

has upgraded the current version of container modules, all the components of the new version of container modules are made from standard and automatic production procedure. Installation procedure of the upgraded version containers are easy and reduces the on-site labor requirement.

CONTAINER HOUSE ADVANTAGE



Structural safety



Durability



Water resistant



Fire proof



Easy assembly



Flexible application with modular combination



Good appearance



Cost and economic advantages

NEW SERIES DETACHABLE CONTAINER HOUSE



DIMENSION

ITEM	REGULAR SIZE (OUTSIDE)	REMARKS
LENGTH	6058mm 5078mm 4098mm 3118mm	Special size can be customized
WIDTH	3000mm 2438mm	3029mm cannot be delivered in 40ft HQ. Special size can be customized
HEIGHT	2591mm	It can be increased by module 200mm. Max. 3191mm

FLAT-PACK CONTAINER HOUSE



DIMENSION

ITEM	REGULAR SIZE (OUTSIDE)	REMARKS
LENGTH	3029mm 4876mm 6058mm	Special size can be customized
WIDTH	2438mm 3029mm	3029mm cannot be delivered in 40ft HQ. Special size can be customized
HEIGHT	2591mm	It can be increased by module 200mm, Max. 3591mm

PRODUCT

DOUBLE-C STRUCTURE

has developed the Double- C products independently, has a number of invention patents. has introduced a fully automatic CNC production line for processing and production, which reducing the complicated processing procedures to compensate for the complex processing of the steel structure and the needs for paint treatment on the surface. The component parts are standardized, which improving the the production efficiency and shortens the delivery period greatly.

Program Advantage



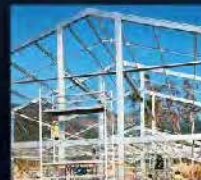
Quick installation



Wide range of applications

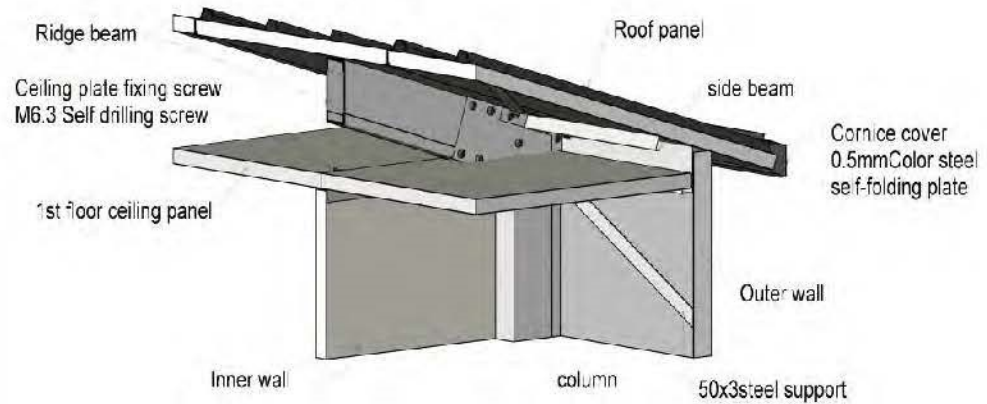


Durability for use

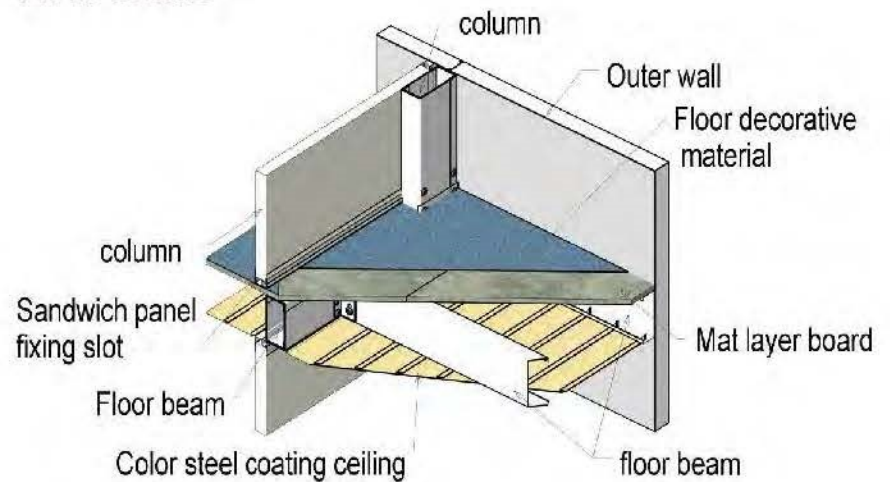


Stable structure

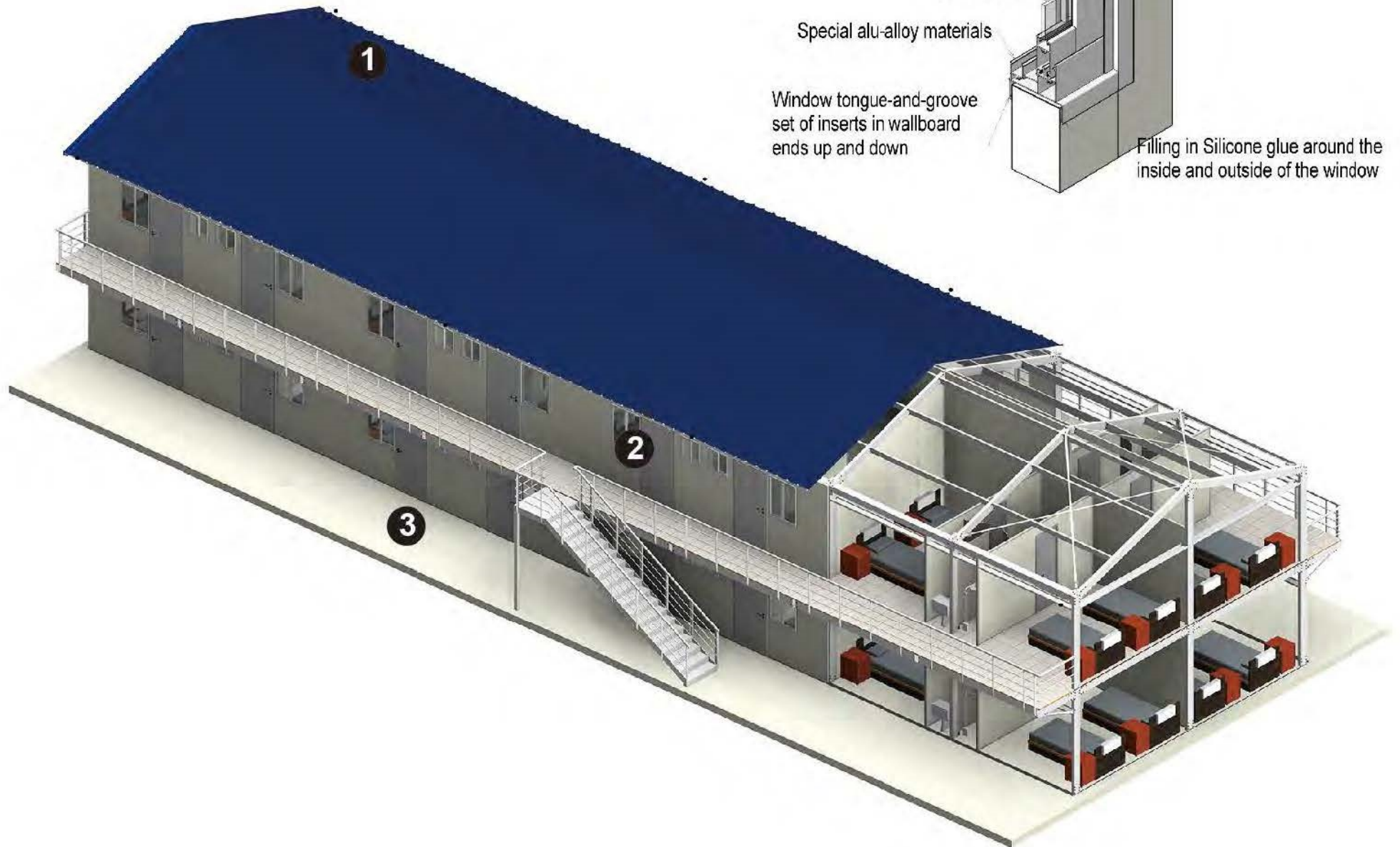
1 Roof details



3 Floor details



2 Window details



PRODUCT

LIGHT GAUGE STEEL

Light Gauge Steel (LGS) systems are manufactured from FrameCAD software and Heyes cold forming technology, which is the state-of-the-art fully automatic production line with tolerance to 0.5 mm. LGS studs are made from high strength G550 steel with AZ150 coating, it possesses light weight, high strength and anti-corrosion treatment, with an over 50 years life expectancy.



Easy to install



Wind & seismic resistance



Fire & Heat insulation



Artistic and comfortable



Prefabricated



Energy conservation and environment protection

Program Advantage

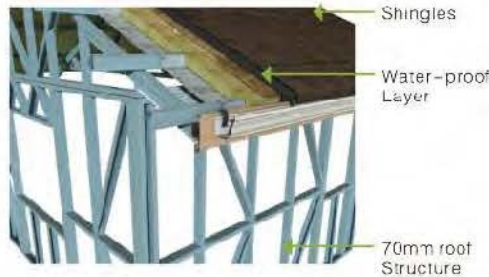
ECONOMIC ROOF SYSTEM



ECONOMIC



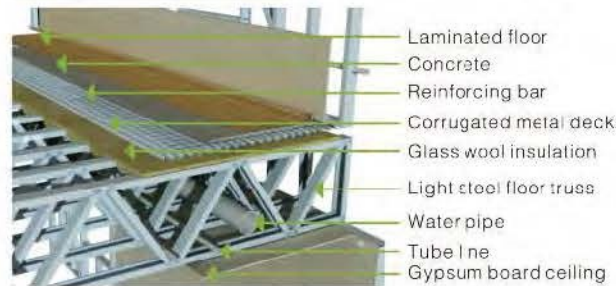
TYPICAL ROOF SYSTEM



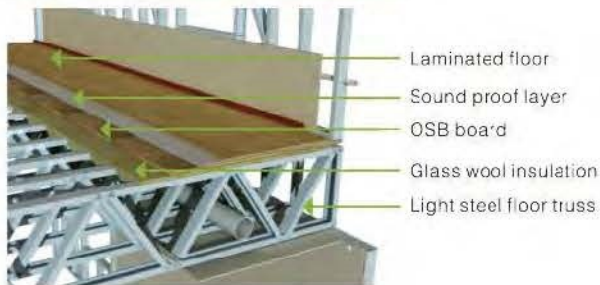
Typical

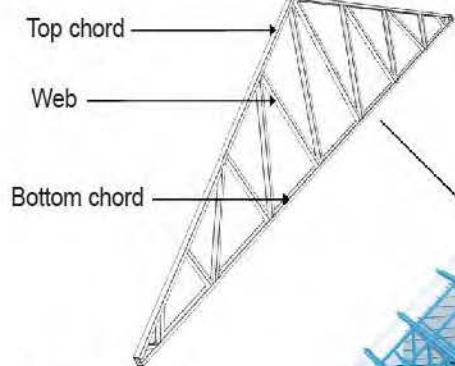
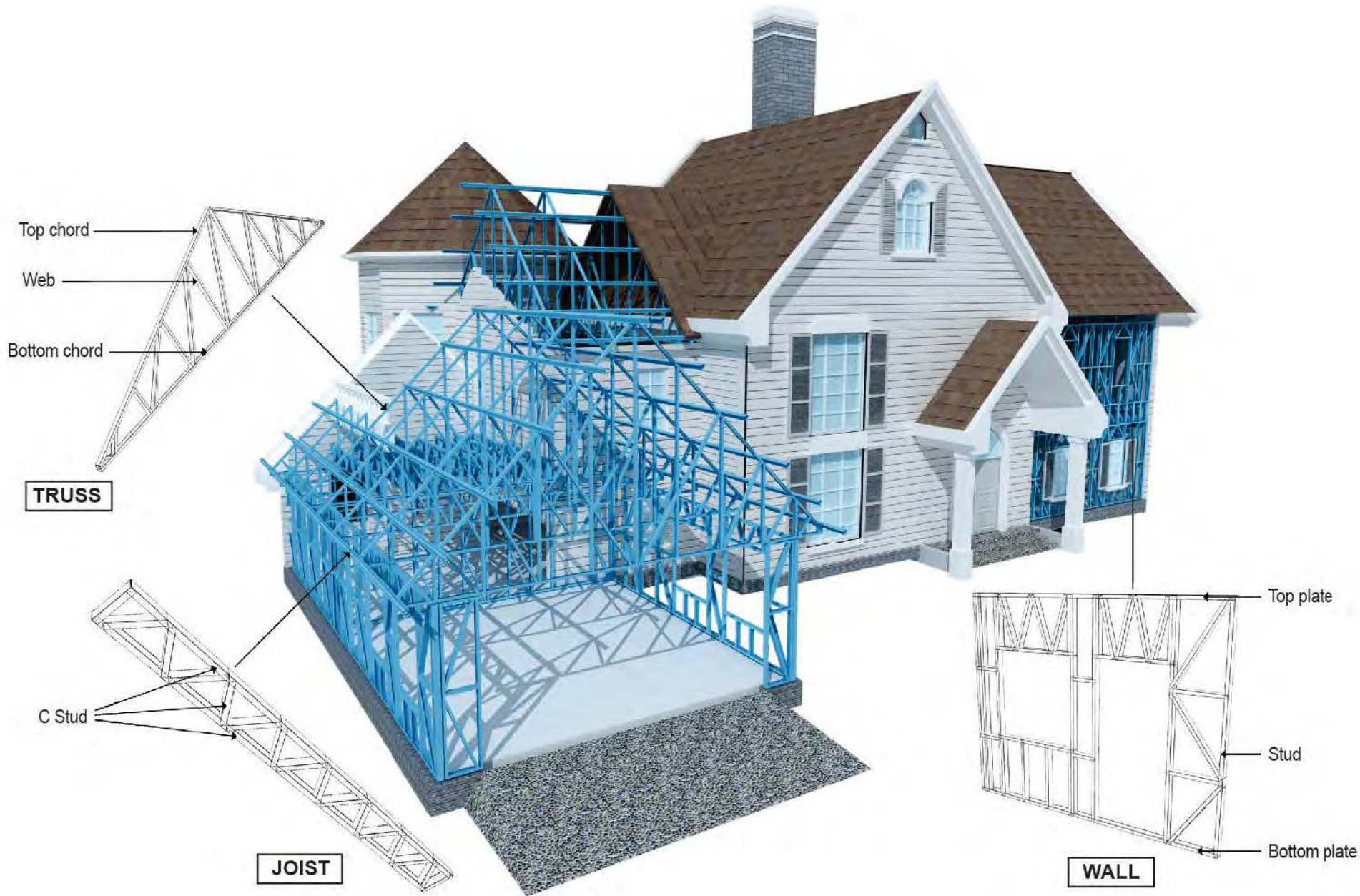


CONCRETE FLOOR

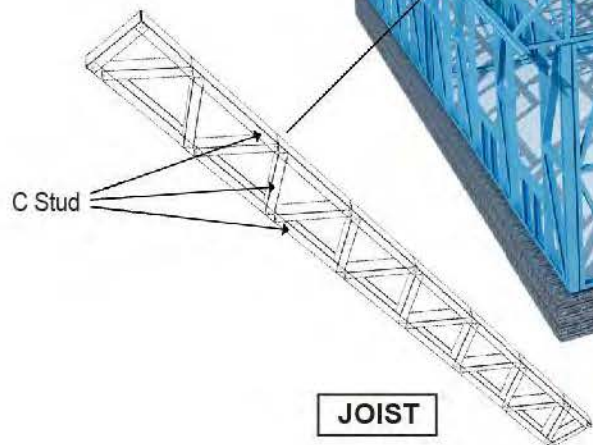


STEEL STRUCTURE FLOOR

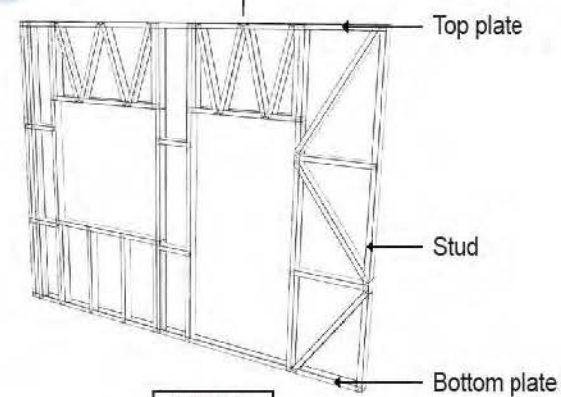




TRUSS



JOIST



WALL

PRODUCT

STEEL STRUCTURE BUILDING

has over 20 years of experience in this industry, and can provide full services to customers' requirements covering design, manufacturing, logistic, installation, and after sales service. With the fast growing of manufacturing industry, large steel structure is very much in demand. The unique advantages are high strength, capable of large span, environmental, seismic resistance etc. Its common applications are factory, warehouses, public buildings and other special application.

Program Advantage



Reduce construction cost



High speed of construction



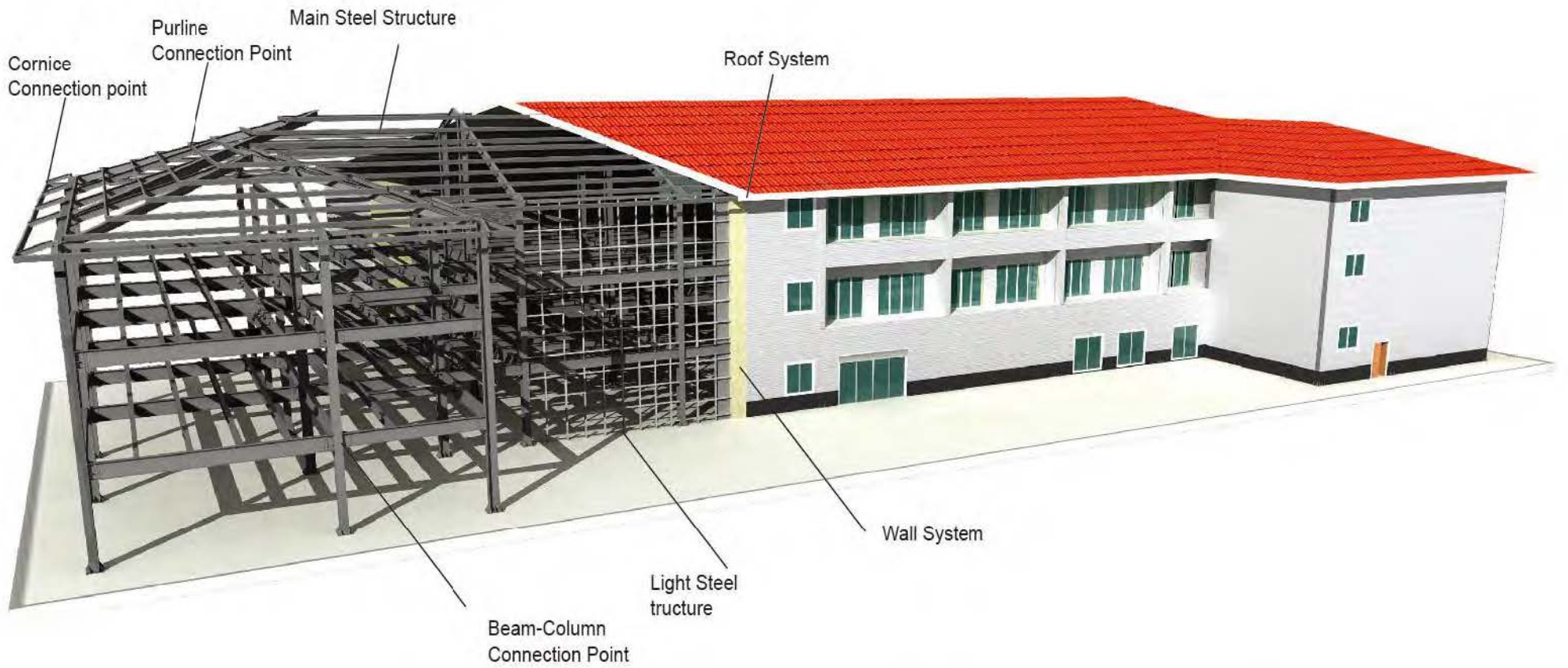
Reduce site management costs



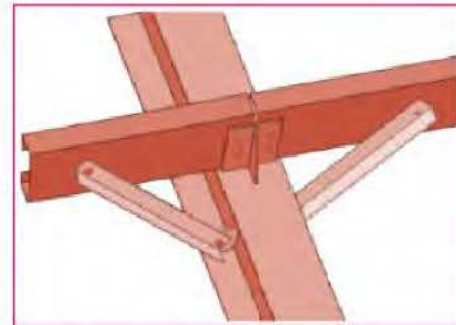
Less pollution for environment



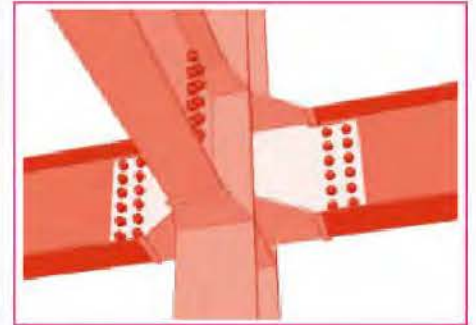
Multi-function buildings



▲ Cornice Connection Point



▲ Purline Connection Point



▲ Beam-column Connection Point



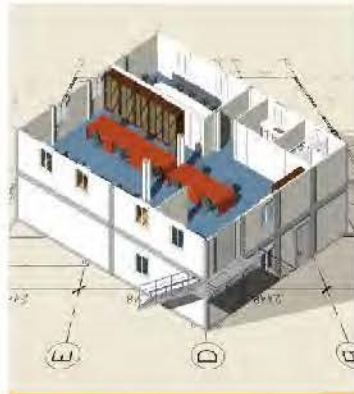
• ONE-STOP SERVICE



Project planning

Customers can forward enquires to us via e-mails, and our sales representatives will contact you through e-mails

In the consulting stage, according to customers' requirements, will combine the climatic conditions with the application requirements of the construction site to provide similar cases for client's reference from thousands of successful project cases in the past.



Drawing design

employs over 100 design staffs and engineers from local and overseas, which provides custom made design services. utilizes design software such as Sketch Up, Autodesk Revit, AutoCAD architectural design, PKPM, 3D3S, SAP2000 Structural design, Tekla, FrameCad detail structural design etc. Based on the parameters of each project, we establish the architectural modeling and its respective digital animation and renderings. At the moment, we have finished the development of all the Revit modeling of our current products, further enhancing the details of our design and three dimensional modeling for our customers.



Purchase and production

Purchase: has a mature procurement supply chain, including product raw materials, kitchen and bathroom accessories, home equipment and other supporting facilities. Each year, conducts quality assessments of suppliers, resolutely rejects unqualified suppliers, and guarantees the quality of products from the source.

Production: has hundreds of fully automatic mechanized production lines, can combine with efficient production arrangements to provide a powerful guarantee for the timely delivery of customer orders. In the manufacturing process, can provide production progress reports to customers through pictures and videos. PTH has a professional quality inspection team that each product process will go through a rigorous quality inspection and the products which cannot meet the quality standards will never be shipped. It is convenient for customers or those third parties commissioned by customers to conduct factory inspections.



Transporting and installing

Transporting: has more than 20 years of international logistics experience, can provide customers with the best transportation routes, customs declaration, commodity inspection and other services, and truly realizes "door to door."

Installing: will provide complete and detailed installation drawings for the product. professional photography and post-production personnel who can provide installation videos for the product and intuitively demonstrate the installation steps and installation details of the product. owns on-site installation guidance experience for dozens of projects such as Mozambican light steel villa resorts, Chilean container camps, etc. It can provide EPC construction services and technical guidance according to the needs of customers to ensure the smooth and safe construction of the houses required by customers and realize real "Check-in".



Project management

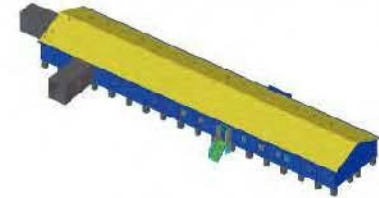
We manage and operate the whole project with BIM system. For the post-maintenance of completed projects, can provide remote telephone consultation and guidance according to customer needs. can provide on-site maintenance and repair services according to customer requirements for the post-maintenance of completed projects.

CONTAINER HOUSE



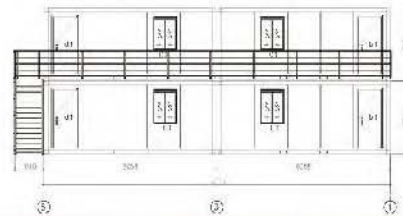
Kazakhstan Camp

Location : Aktogai, Kazakhstan
Acreage : 35,000m²
Usage : Mining camp housing project



Venezuelan Container House

Location : Venezuela
Quantity : 500units
Usage : Government-guaranteed community





Canada Container House

Location : Canada
Acreage : 3bedroom, 1 kitchen,
1bathroom, 1living room
Usage : Resort cottage near lake



Philippines Hotels

Location : Philippines
Scale : 72 units 20' container houses+1 unit 8' container house
Usage : Dormitory living+training school

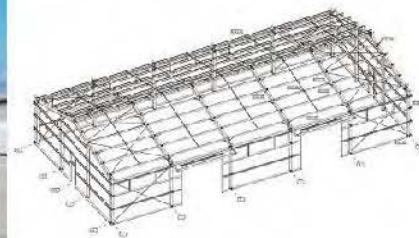
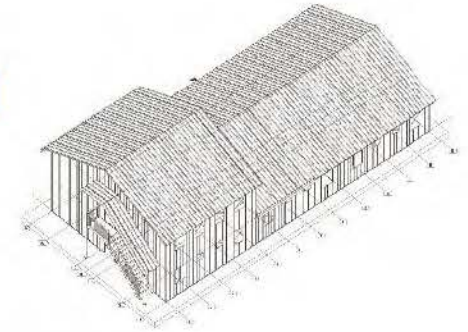


DOUBLE-C STRUCTURE CASE



Laos Temporary Camp

Location : Laos
Project scale : 180m²
Usage : Camp



Swedish Double-C Structure Warehouse

Location : Sweden
Acreage : 450m²
Usage : Warehouse

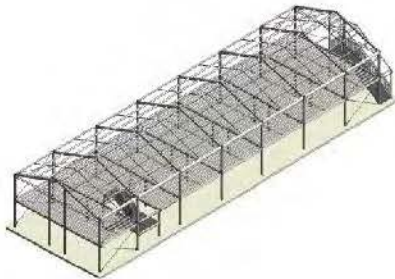
Roof dead load : 0.2KN/m²
Snow load : 0.6KN/m²
Wind load : 0.4KN/m²





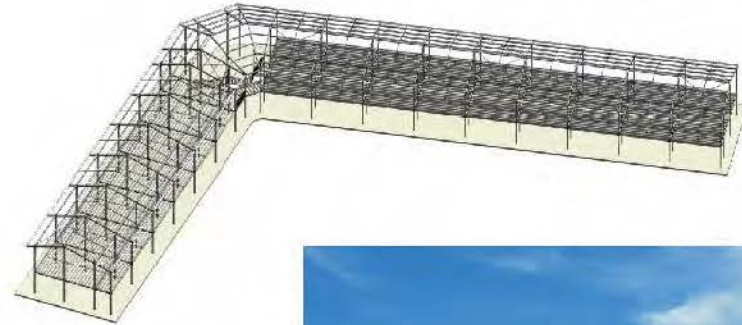
Laos Dormitory

Location : Laos
Type : Double-C structure
Usage : Dormitory

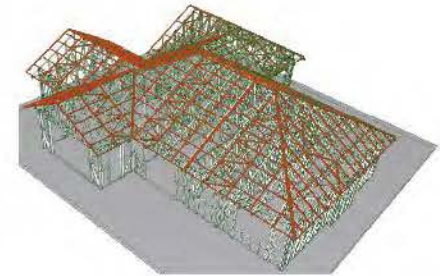


Maldives school

Location : Maldives
Acreage : 2058m²
Usage : School



LIGHT GAUGE STEEL CASE

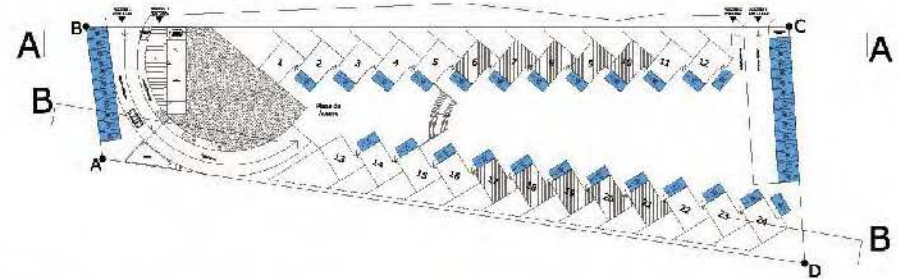


Luxury New Zealand Light Gauge Steel

Location : New Zealand
Acreage : 119m²
Usage : Living house

Chile Villas

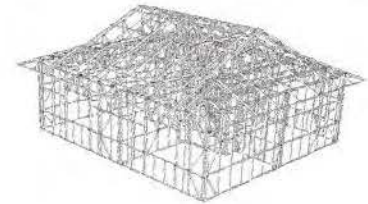
Location : Chile
Acreage : 2*59 m²*10sets
Usage : villa house





Mozambique Villa Resort

Location : Mozambique
 Acreage : 8,000m²
 Usage : Resort hotel



Las Vegas Hotel

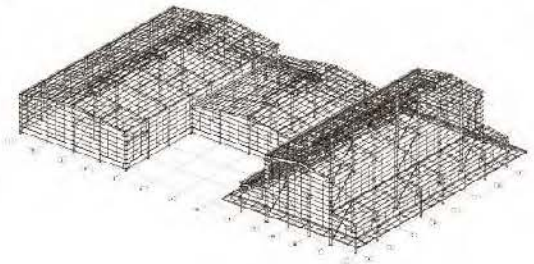
Location : Las Vegas
 Acreage : 4500m²
 120rooms
 Usage : Hotel

STEEL STRUCTURE BUILDING CASE



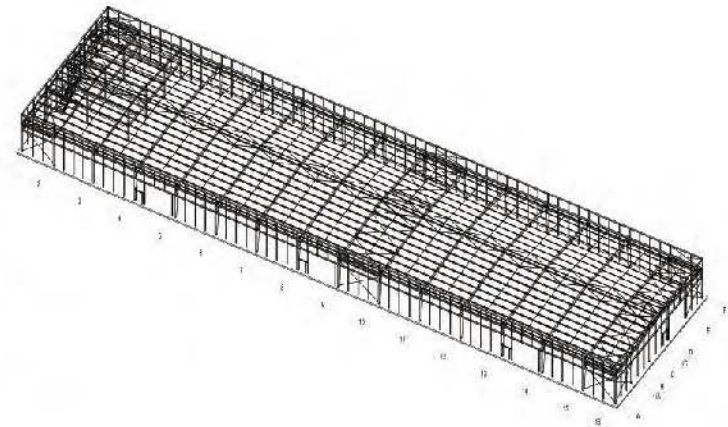
Nicaragua Steel Structure

Location : Nicaragua
Acreage : 4455m²
Usage : Coffee plant



Albania Steel Warehouse

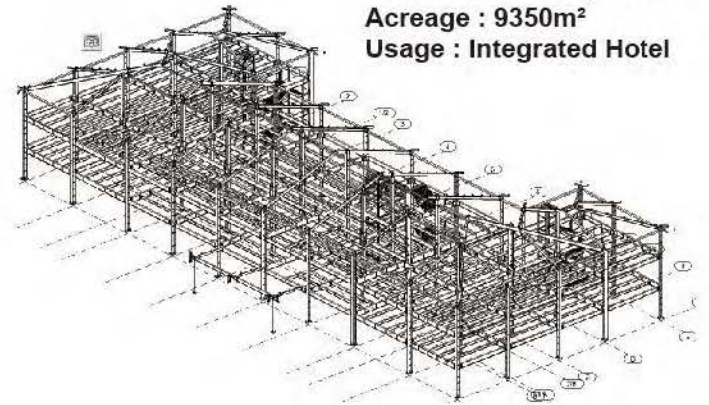
Location : Albania Acreage : 3310m²
Delivery : 7*40'HQ Usage : Warehouse





Africa Gabon Hotel

Location : Gabon, Africa
Acreage : 9350m²
Usage : Integrated Hotel

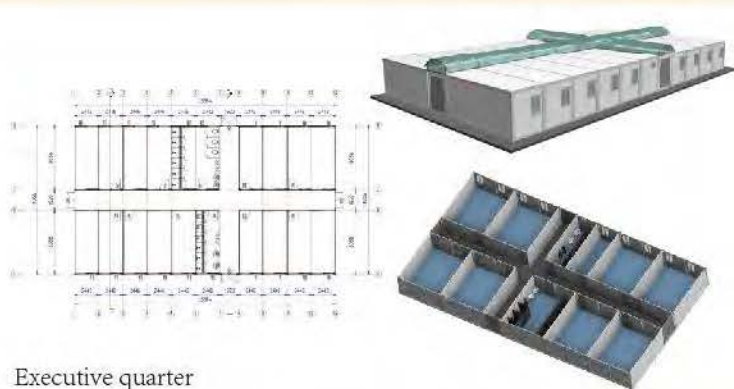


Virgin Islands Logistics Center

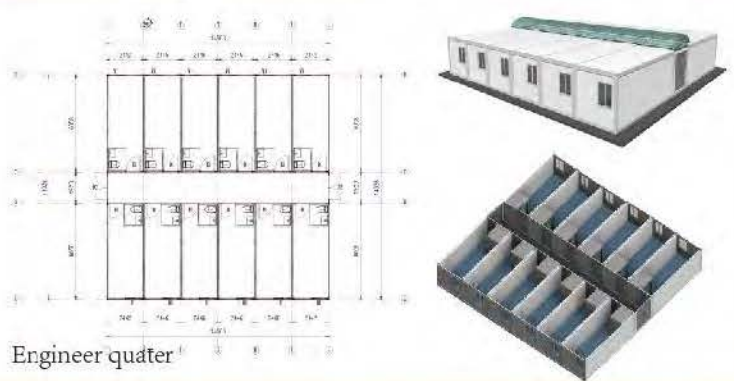
Location : Virgin island
Acreage : Over 10,000m²
Usage : Distributing center



CONTAINER HOUSE SOLUTION

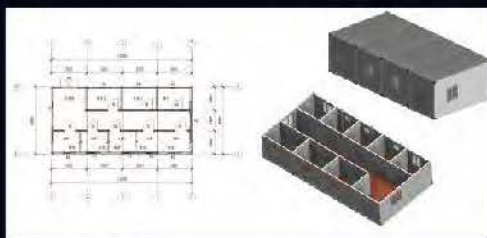


Executive quarter

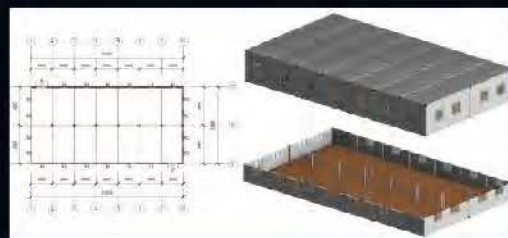


Engineer quarter

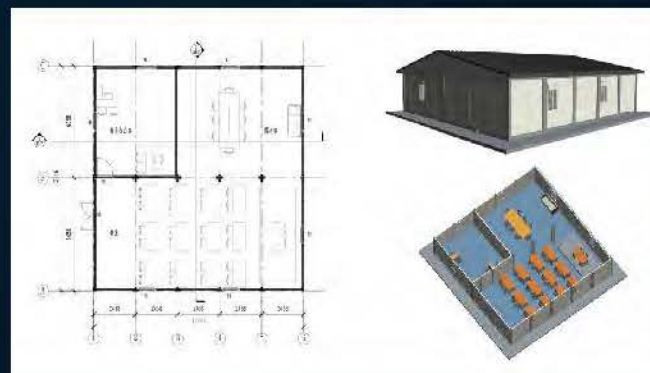
▲ Dormitory



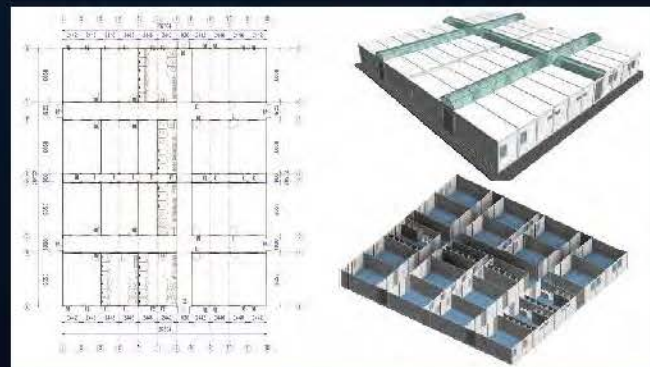
Medical clinic



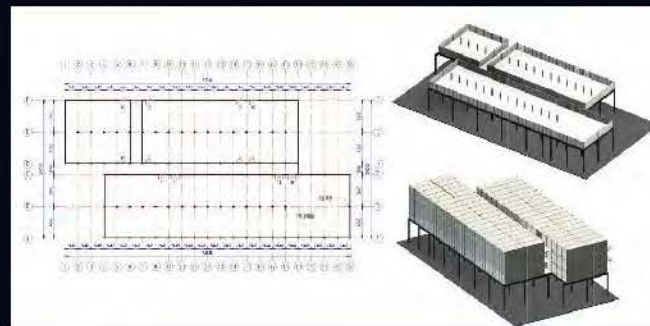
Restaurant



School

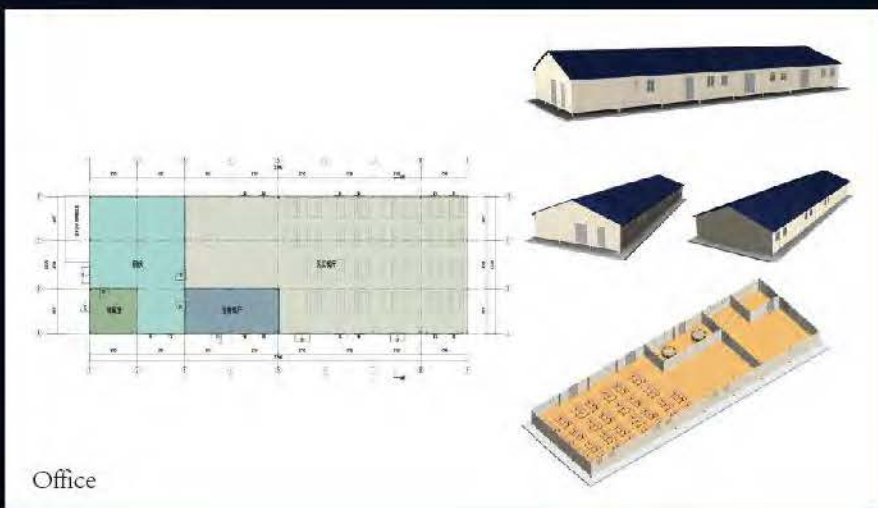
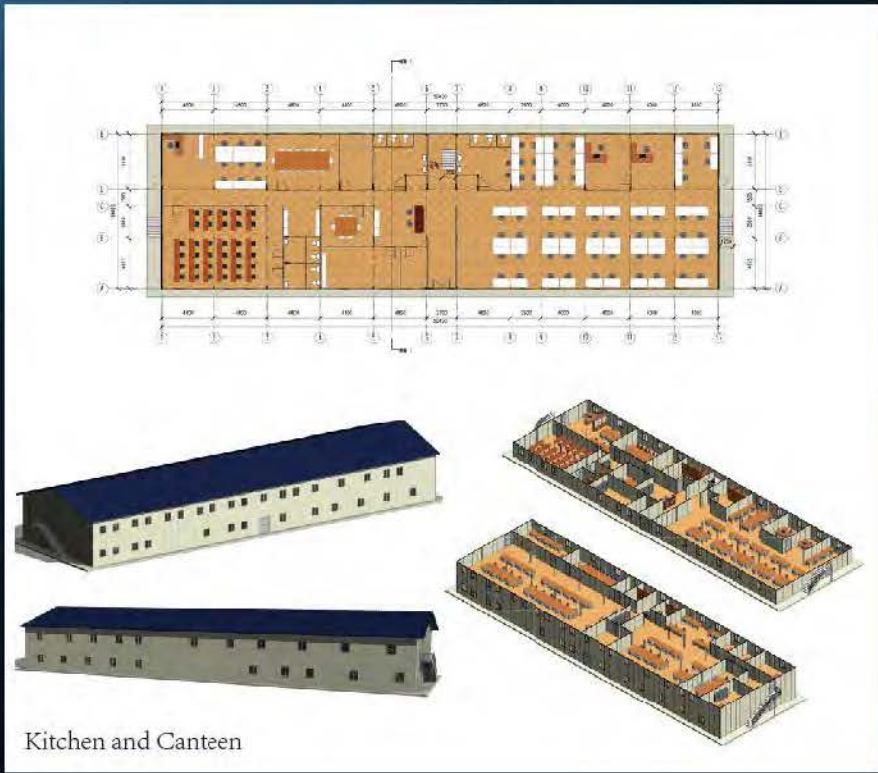


Government-guaranteed community

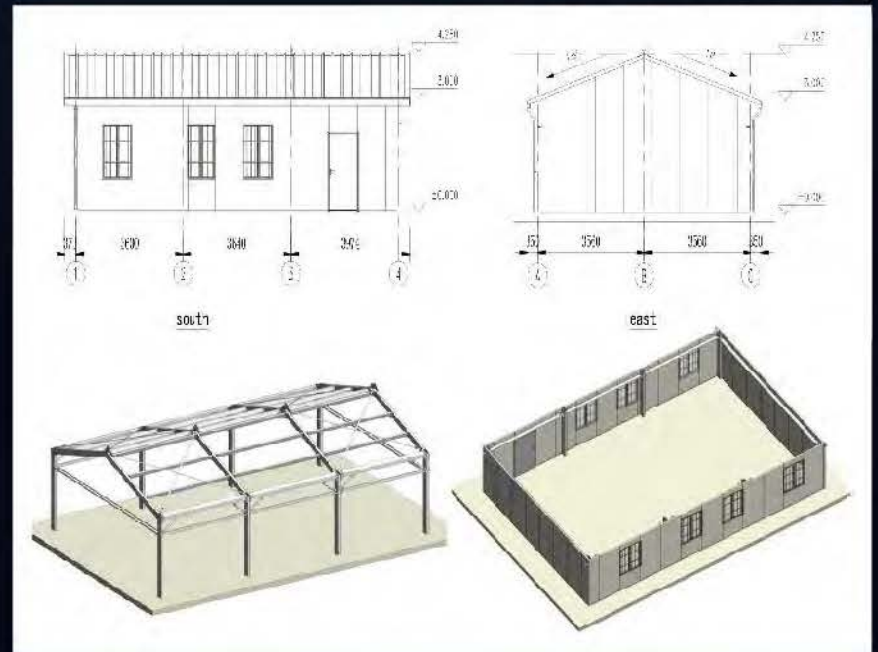


Motel

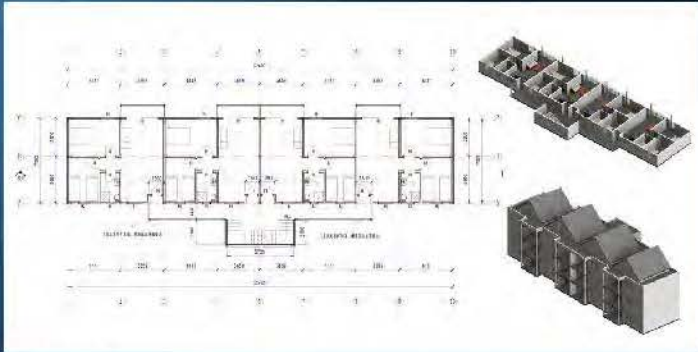
DOUBLE-C STRUCTURE SOLUTION



▲ Residential house ▼ School



LIGHT GAUGE STEEL SOLUTION



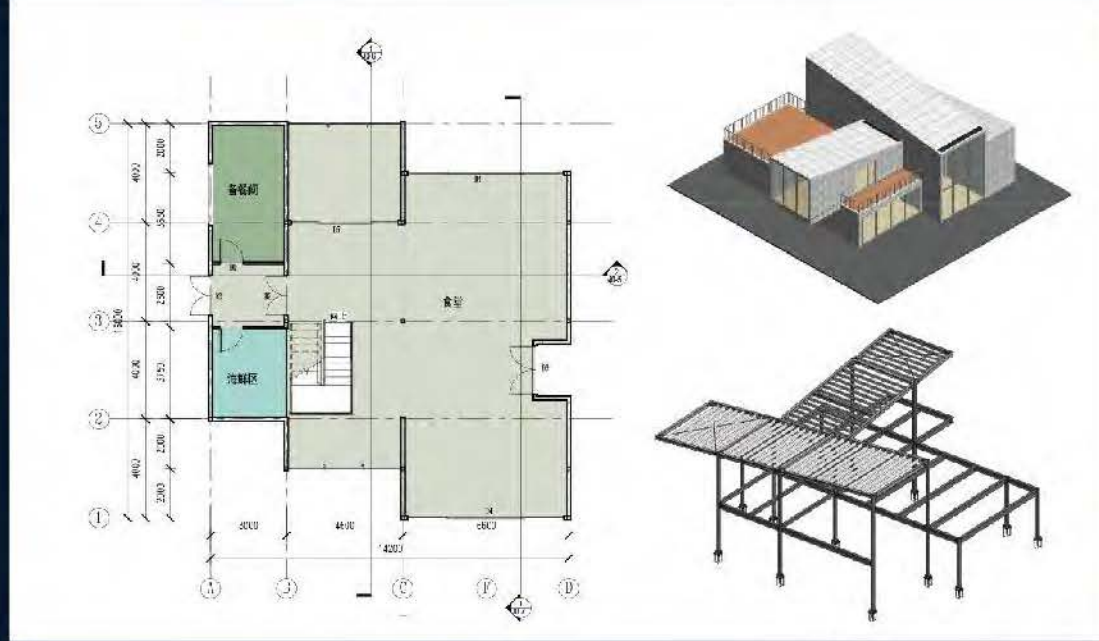
▲ Townhouses



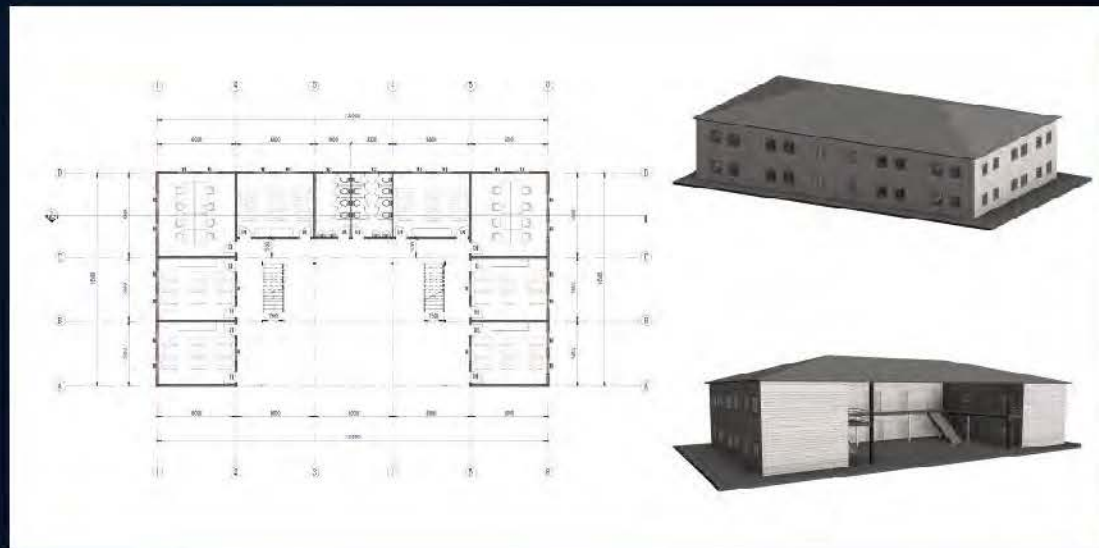
▲ Water Front Villas



▲ Residential units

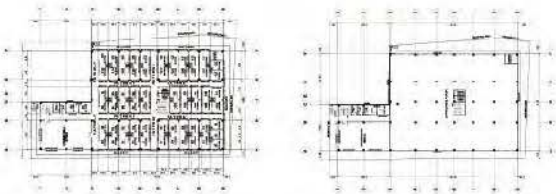
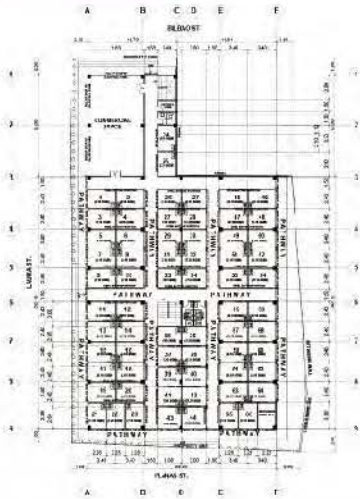


◀ Hotel

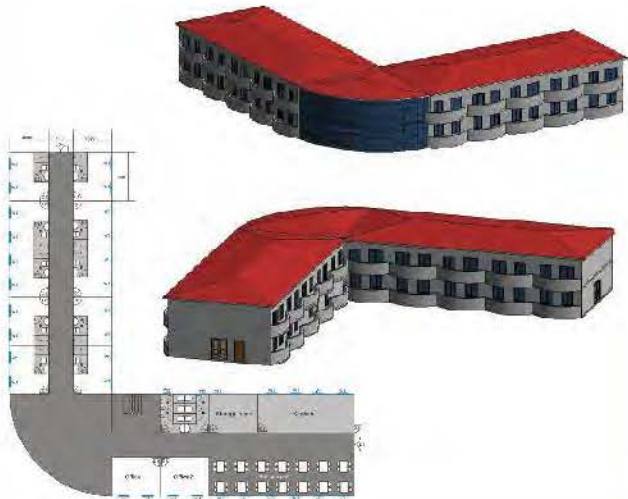


◀ School

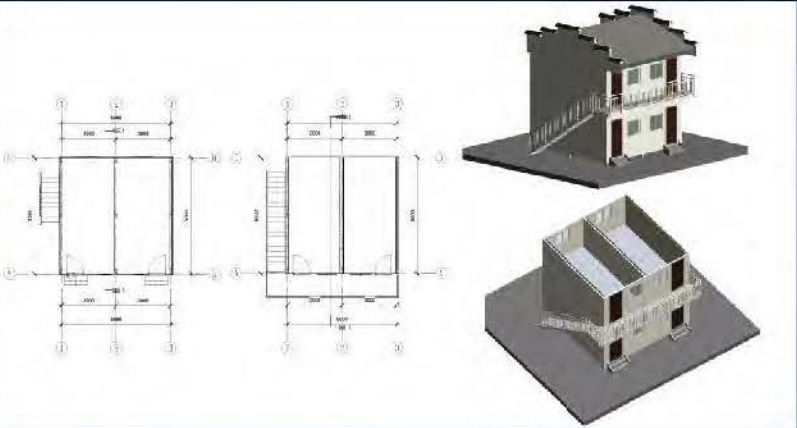
STEEL STRUCTURE BUILDING SOLUTION



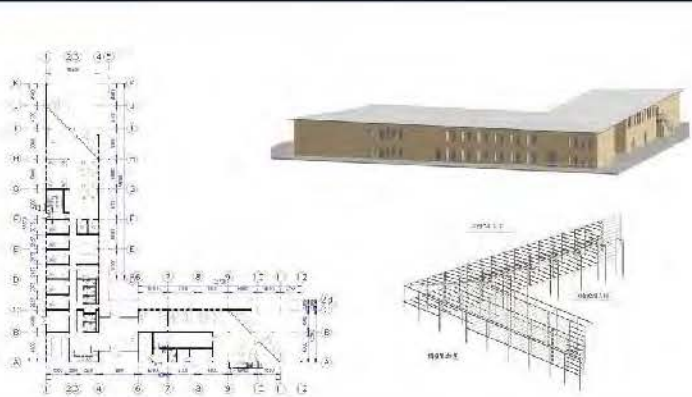
▲ Retail



▲ Hotel



▲ Apartment



▲ Office

