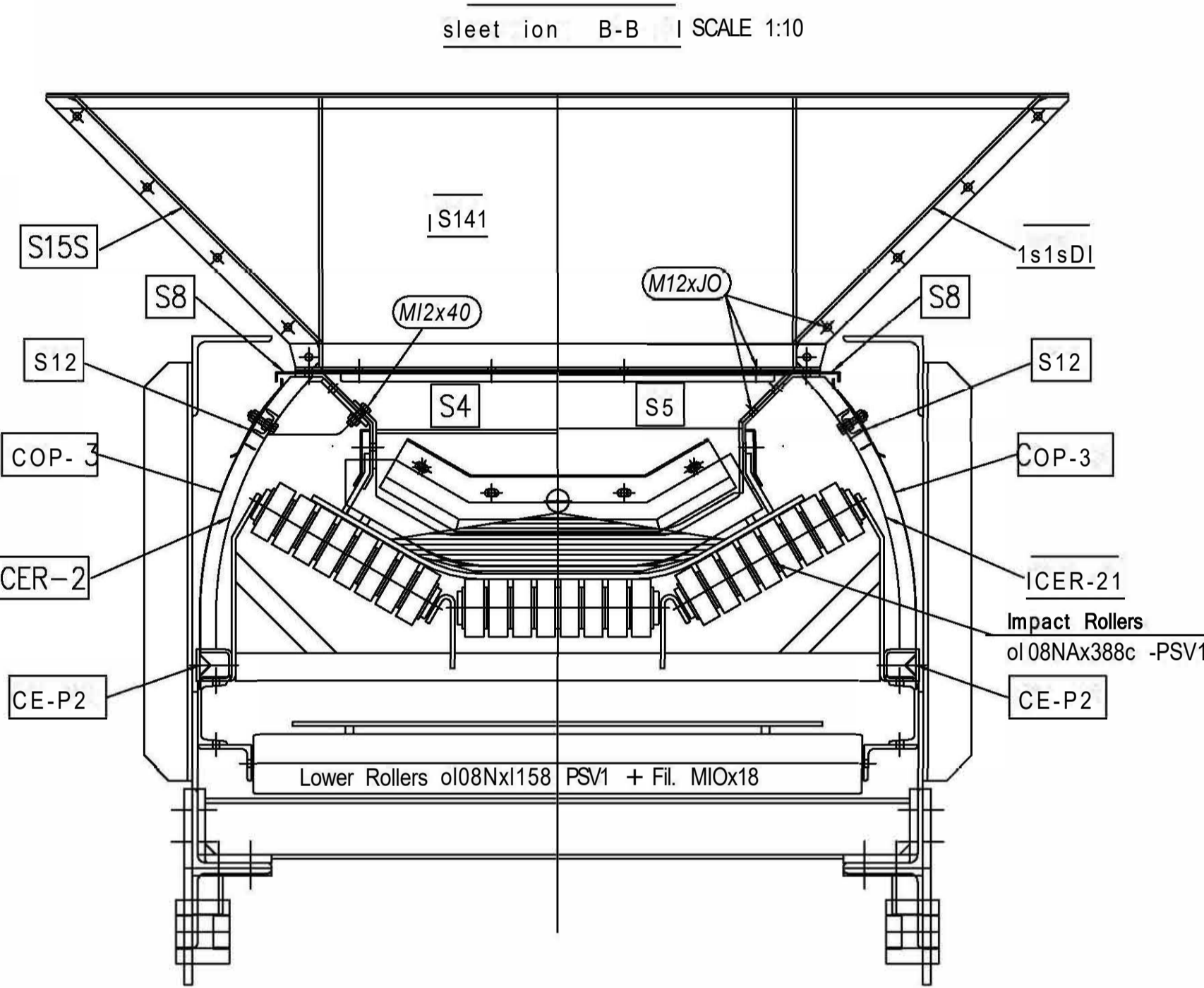
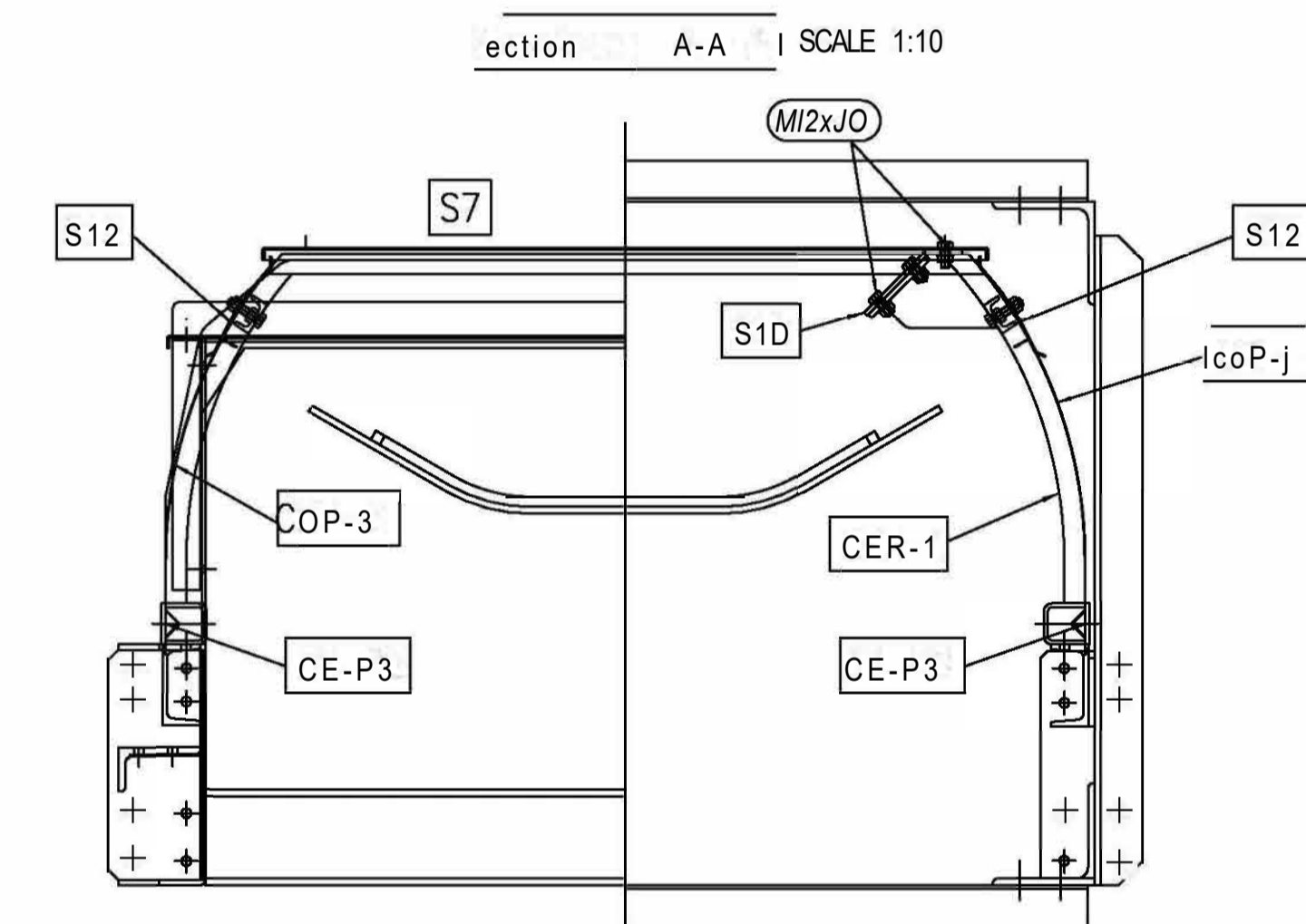
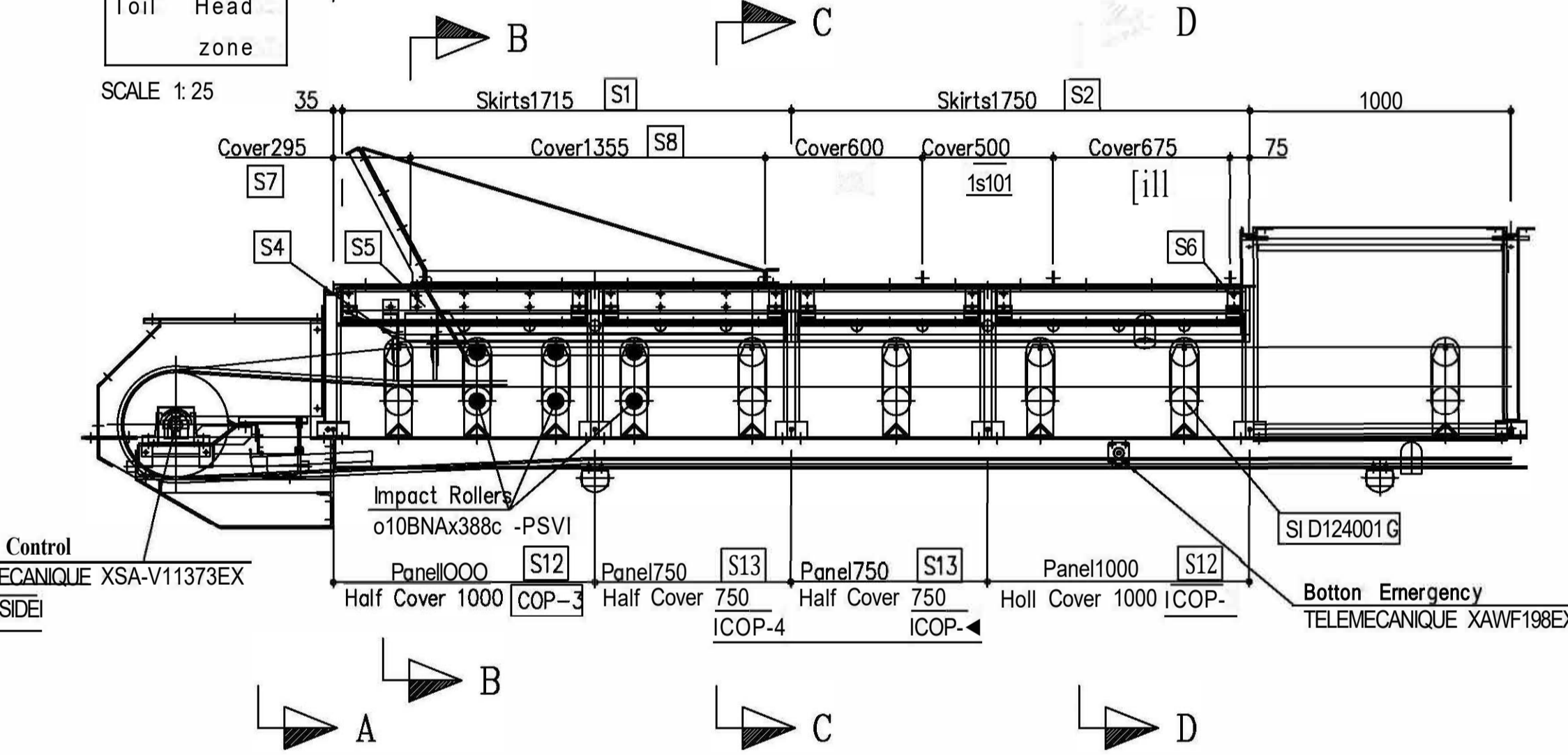
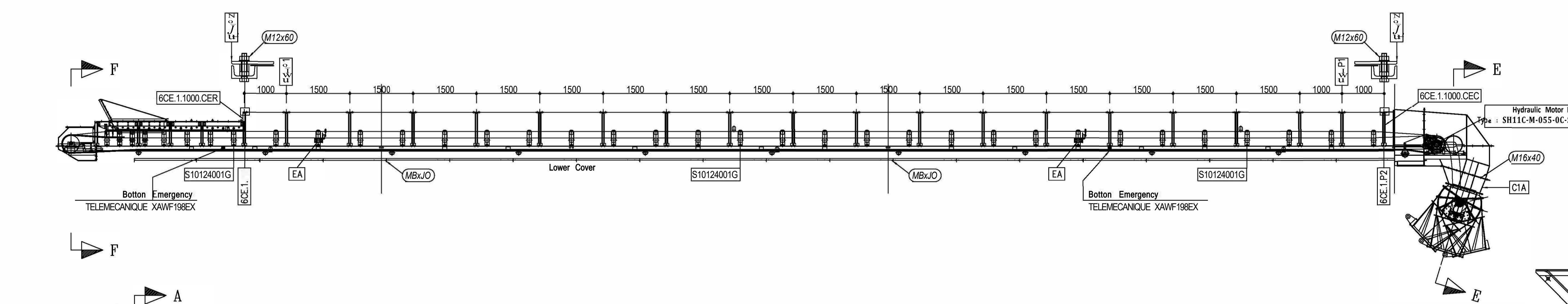
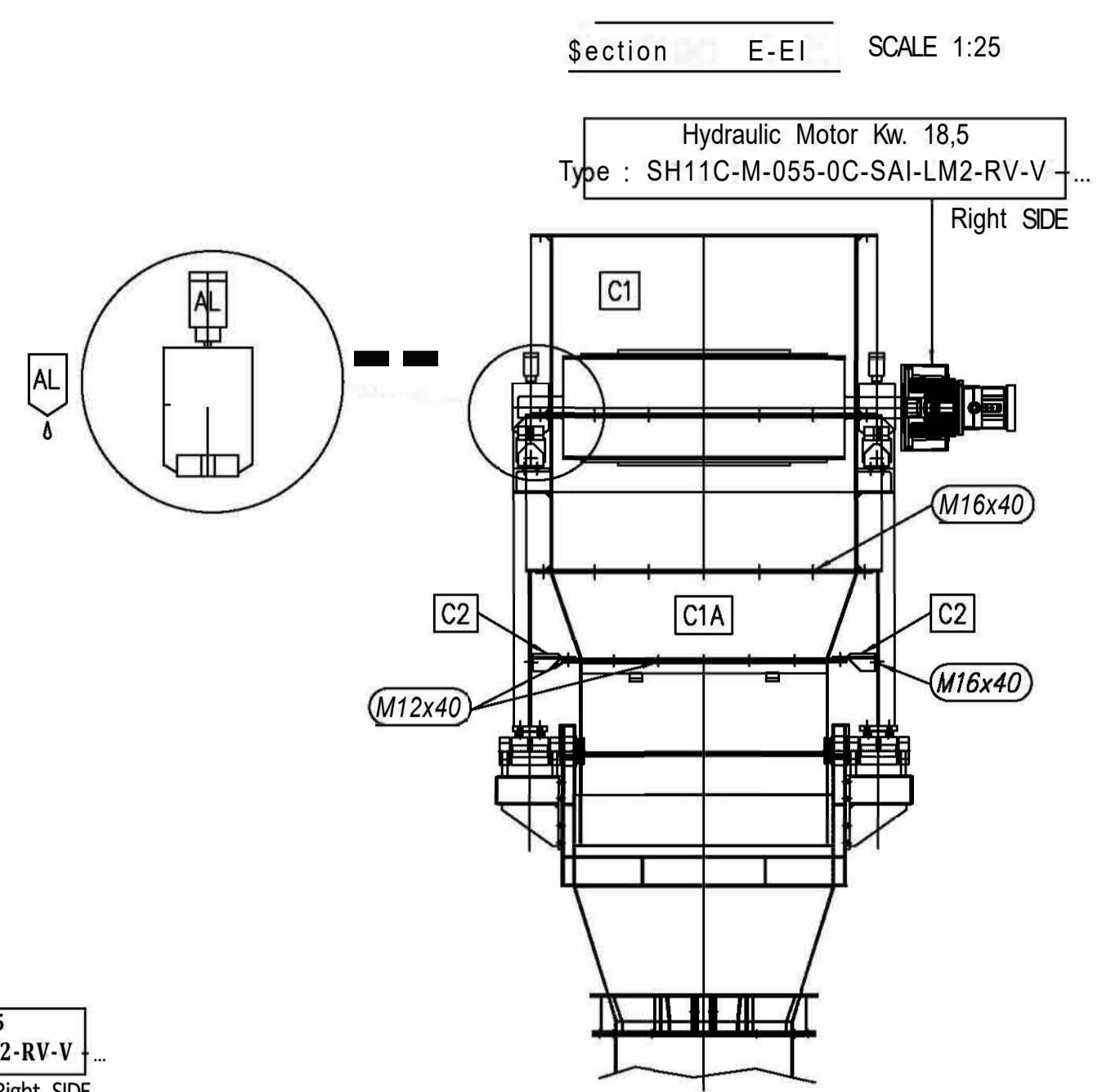
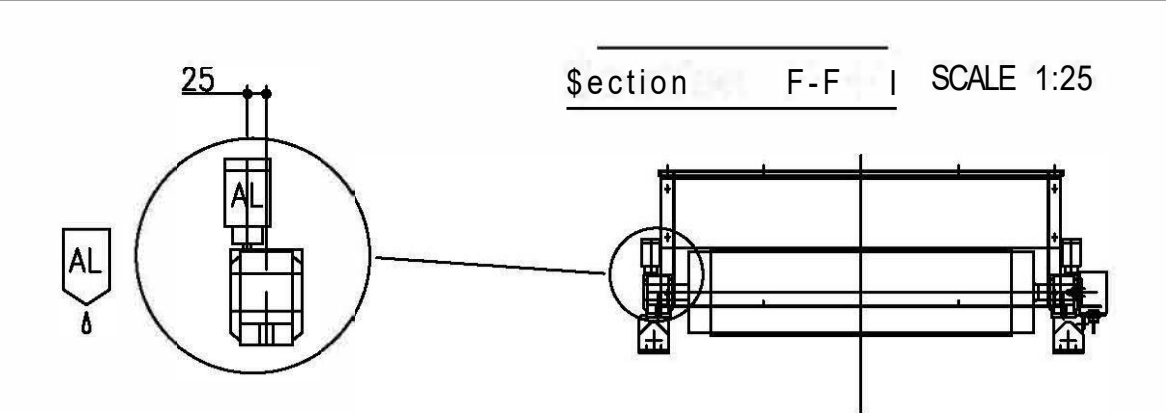
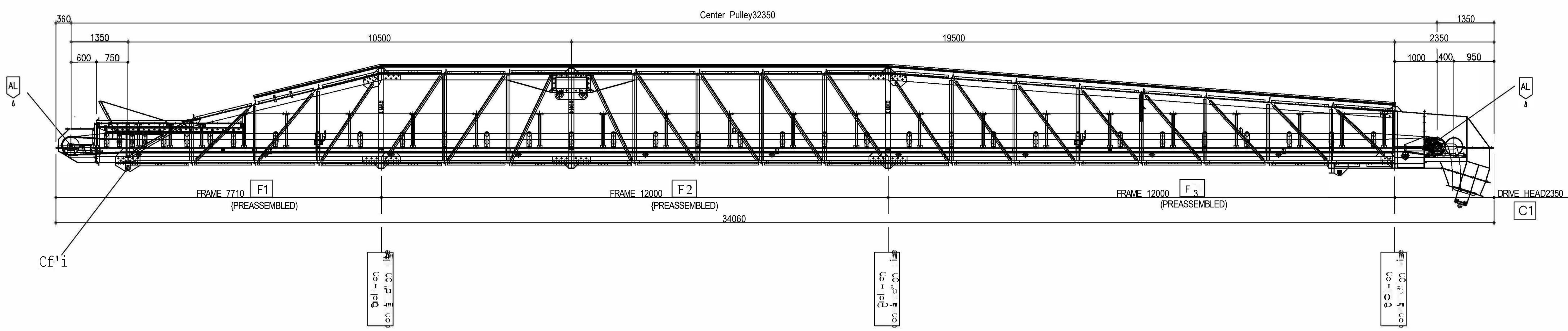


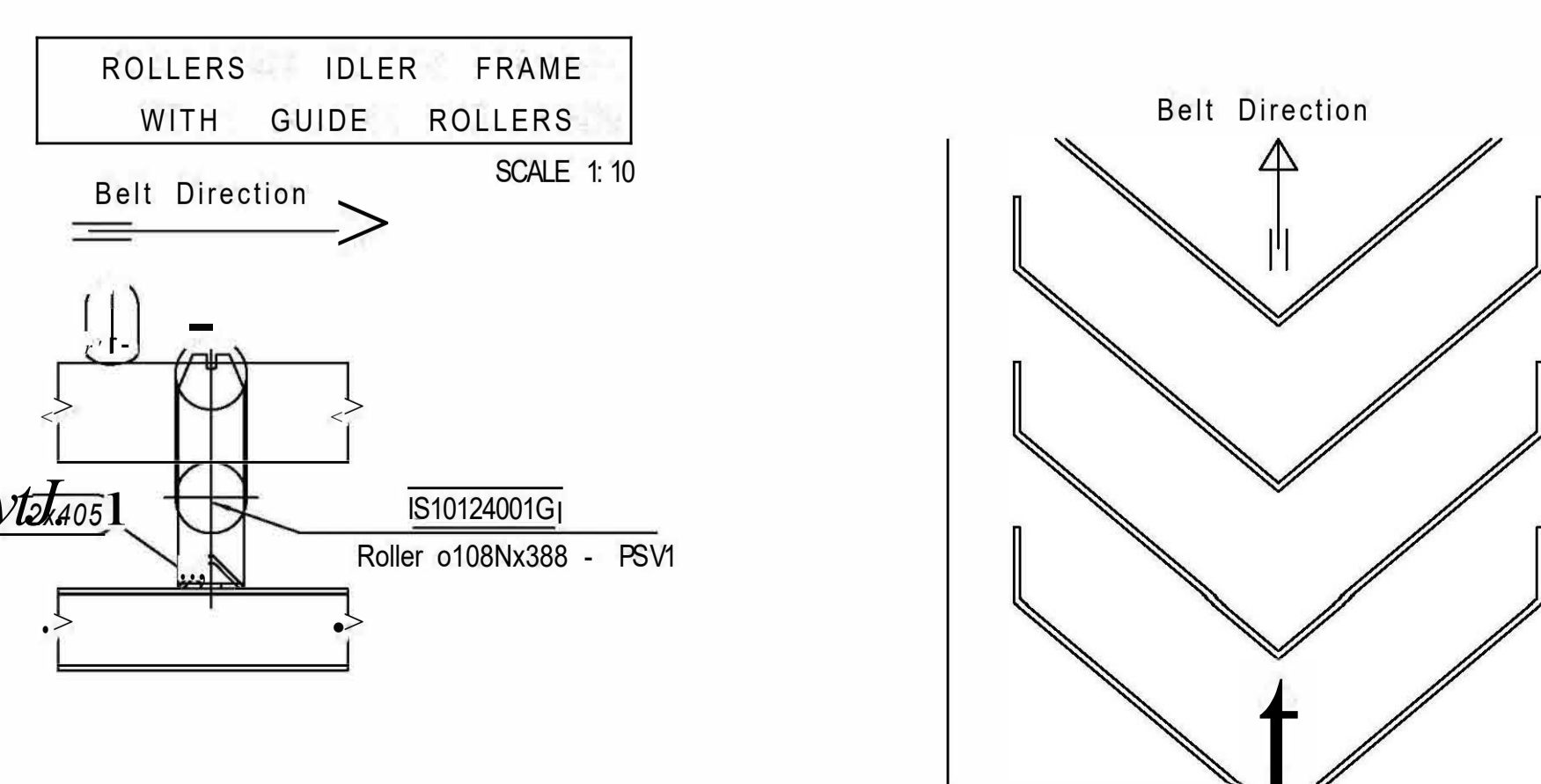
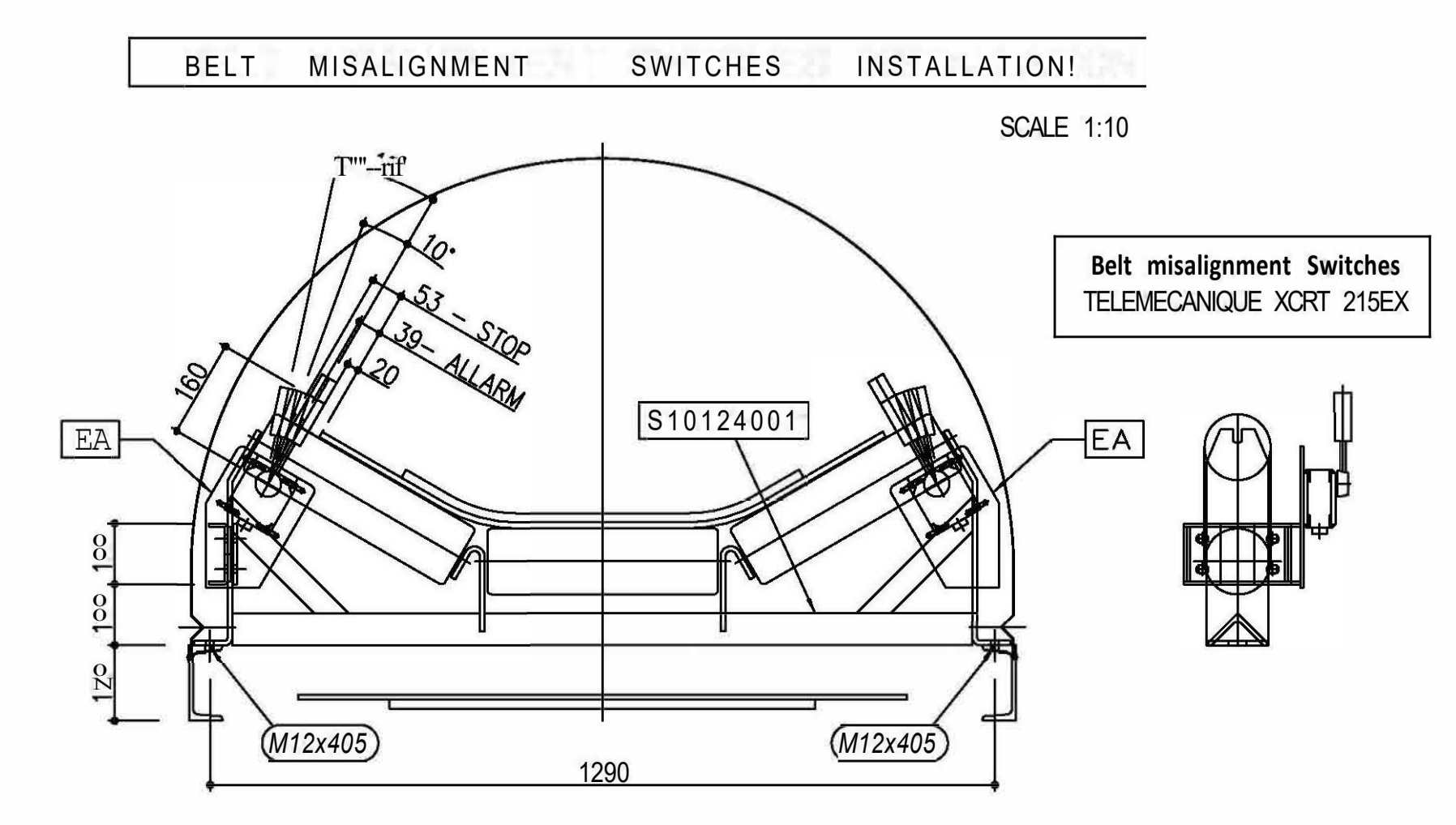
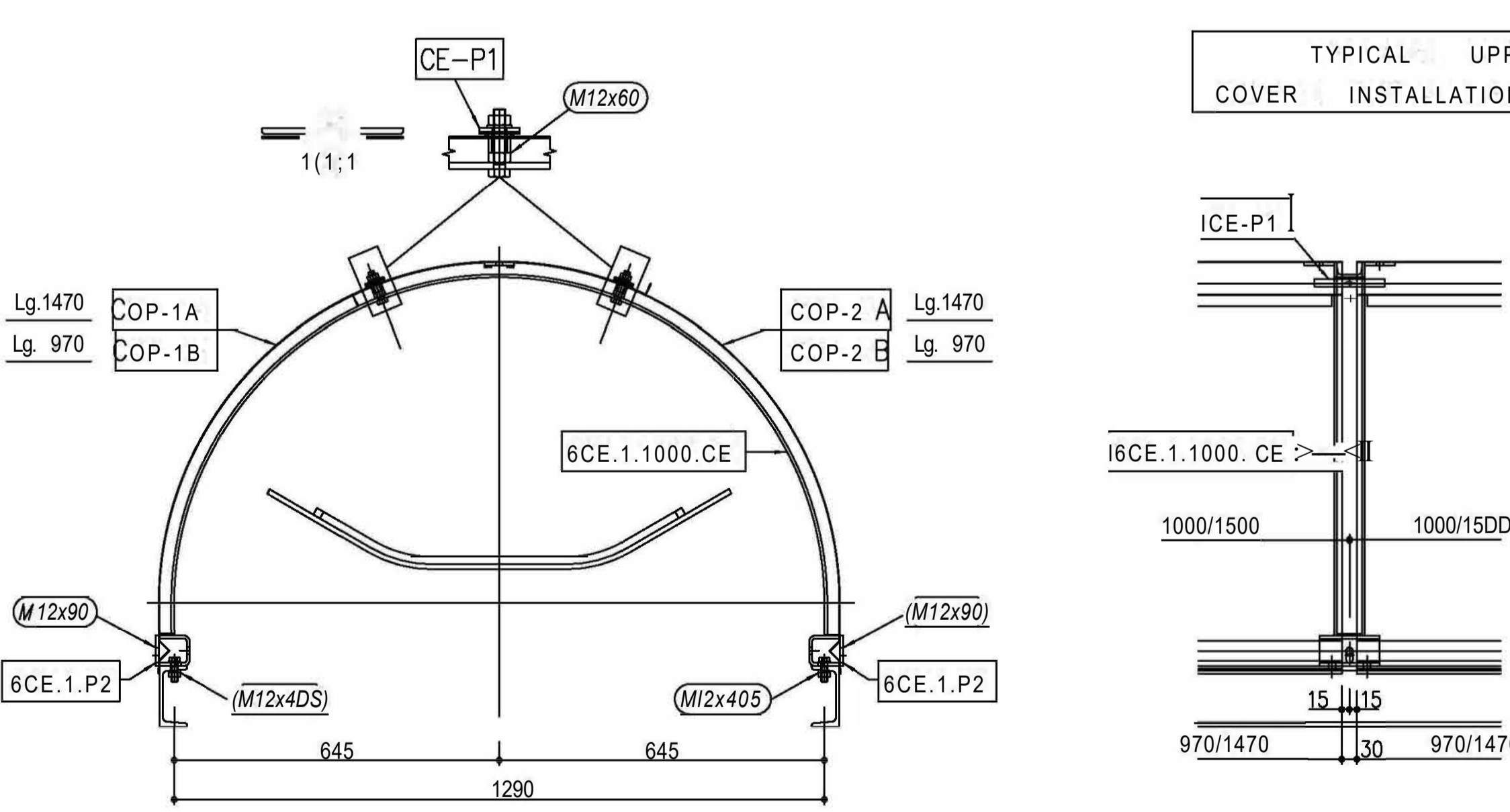
(MBx20)	(Y12xJ0)	(#12x40)	(M12x40S)	Upper Cover (M12x60)	Half Cover
f 15mm					
<b>p</b> "11"					
(M15x40)	(M12x90)	(M12x40)	(M12x90)		
N1 Screw M16x40 8.8 UNI 5739 - N1 Nut M16 6S UNI 5588 - N1 Washer 016 R40 UNI 6592					35
For Hole ø18 and Thickness 10-20 mm					
N1 Screw M12x60 8.8 UNI 5739 - N2 Nut M12 6S UNI 5588 - N1 Washer 012 R40 UNI 6592					60
Prisoner Screw For Support of Upper Cover					
N1 Screw M12x60 8.8 UNI 5739 - N2 Nut M12 6S UNI 5588 - N1 Washer 012 R40 UNI 6592					80
Prisoner Screw For Support of Upper Cover and Half Cover					
N1 Screw M12x40 8.8 UNI 5739 - N1 Nut M12 6S UNI 5588 - N1 Washer 012 R40 UNI 6592					120
Special For LPV 120					
N1 Screw M12x40 8.8 UNI 5739 - N1 Nut M12 6S UNI 5588 - N1 Washer 012 R40 UNI 6592					100
For Hole ø4 and Thickness 16-25 mm					
N1 Screw M12x30 8.8 UNI 5739 - N1 Nut M12 6S UNI 5588 - N1 Washer 012 R40 UNI 6592					150
For Hole ø4 and Thickness 5-15 mm					
(MBx20)	N1 Screw M8x20 8.8 UNI 5739 - N1 Nut M8 6S UNI 5588 - N1 Washer ø8 R40 UNI 6592				10
For Lower Cover					
Pas.	Denomination Use				Q.ty

- Bolt List -



REFERENCE DRAWINGS  
- 114003001 - GENERAL ARRANGEMENT DRAWING1

EA	MISALIGNMENT SWITCH SUPPORT	4
(H)	DRIVE HEAD	1
6CE.1.1000.CE	SUPPORTS OF UPPER COVER	18
6CE.1.1000.CEC	SUPPORTS OF UPPER COVER	1
6CE.1.1000.CER	SUPPORTS OF UPPER COVER	1
CE-R1	SUPPORTS OF UPPER COVER	1
CE-R2	HALF SUPPORTS OF UPPER COVER	6
6CE.1.P21	SUPPORTS OF UPPER COVER: COMPONENT	40
CE-P1	SUPPORTS OF UPPER COVER: COMPONENT	36
CE-P2	SUPPORTS OF UPPER COVER: COMPONENT	4
CE-P3	SUPPORTS OF UPPER COVER: COMPONENT	2
COP-1B	UPPER COVER Lg. 970	3
COP-2B	UPPER COVER Lg. 970	3
COP-1A	UPPER COVER Lg. 1470	16
COP-2A	UPPER COVER Lg. 1470	16
COP-3	HALF UPPER COVER Lg. 970	4
COP-4	HALF UPPER COVER Lg. 720	4
F1	FRAME L=6750	1
F2	FRAME L=12000	1
F3	FRAME L=12000	1
S1D	SKIRTS: RIGHT SIDE L=1715	1
S1S	SKIRTS: LEFT SIDE L=1715	1
S1SD1	SKIRTS: RIGHT SIDE L=1750	1
S1SD2	SKIRTS: LEFT SIDE L=1750	1
S3D	SKIRTS: SHEET METAL FOR MATERIAL CENTERING (RIGHT)	1
S3S	SKIRTS: SHEET METAL FOR MATERIAL CENTERING (LEFT)	1
S4	SKIRTS: FIRST BOTTOM	1
S5	SKIRTS: SECOND BOTTOM	1
S6	SKIRTS: CROSS MEMBER	1
S7	SKIRTS: COVER	2
S8	SKIRTS: COVER	1
S9	SKIRTS: COVER	1
S10	SKIRTS: COVER	1
S11	SKIRTS: COVER	1
S12	SKIRTS: PANEL	4
S13	SKIRTS: PANEL	4
S14	HOPPER: FRONT	1
S15D	HOPPER: RIGHT SIDE	1
S15S	HOPPER: LEFT SIDE	1
S16	HOPPER: BACK	1
C2	SUPPORT FOR DISCHARGE CHUTE	2
C1A	DISCHARGE CHUTE	1
S10124001	ROLLERS IDLER FRAME	32
S10124001G	ROLLERS IDLER FRAME WITH GUIDE ROLLERS	3
Mark	Denomination Use	Q.ty



Assemble Automatic Lubricator SKF LAGD125 /HTT for head and tail pulley's bearings.  
 Lubricate with lithium grease at first assembly.  
 RUBBER BELT IS CLOSED TO RING BEFORE assemble the Rubber belt, AFTER assemble rollers idler frame and upper cover.  
 Assemble in the Right Belt Direction.  
 BEFORE Pull Tail Pulley's Screw AFTER Pull Head Pulley's Screw.  
 Istru ction

Paper NO. E3-@ TELEFONOS LINE ENI 23553 Uscite ed entrate applicative of 10-15 to be added - Continuo - el - Toleranances Quotas without tolerance (tolerances) Carpenry parts (EN 786-1, EN 786-2) ENI CODE FOR TOLERANCES FOR HOLES AND SHAPES LINE ENI 235-2 DESIGN IN SYSTEMS FOR STEELS, where not otherwise specified. Pn nel 5 235 2 Profesi 5 235 2 Mod 5 235 2 Pn nel 5 235 2 (ENI 2007-3)		COP ANESSA BASE 114003 COMMESSA MATRICOLA SCALE 1:50 DISEGNO N° FORGIO REV.	
21-07-1 DATA DISSEGNO EMISSIONE DESCRIZIONE MODIFICHE LAMPERTI 0		OFFICINE NASTRI TRASPORTATORI BERGAMO - ITALIA VIA PROVINCIALE 25 - 24040 LALIO TEL. 035/691085 - 035/201010 - FAX. 035/692282	
ITEM 114003 DESCRIZIONE Shiploader 1=33.00x1000 ASSEMBLY DRAWING		114003003	

Assembly Note