

VESSEL DESCRIPTION (cont.)

Displacement and Draft

	<u>Transit</u>	<u>Operation</u>	<u>Survival</u>
Total draft (m)	10.70	19.40	15.80
Draft excl. thrusters (m)	6.91	15.61	12.01
Displacement (tonnes)	9722	13254	12050
Deck load (tonnes)	790	1582	1582

(Drafts and displacements taken from Volume 3, Section 7).

Tank Capacities

Water ballast	5894 m ³	(including Tank No. 6S)
Fresh water	864 m ³	
Diesel oil (98%)	2008 m ³	(excluding Tank No. 6S)
Lubricating oil	36 m ³	

Refer to Volume 3, Section 4 for additional details on tank capacities.

Speed

Trial speed with clean hull and in calm water and smooth sea at a mean draft of 6.90 m to be about 7.0 knots at a power on propulsion motors of $2 \times 2,400$ kW.

Present speed at transit draft in Bay of Campeche is about 3.0 knots.

Anchor and Mooring Equipment

Eight (8) anchors of “Flipper Delta” type, 9 tonnes each.

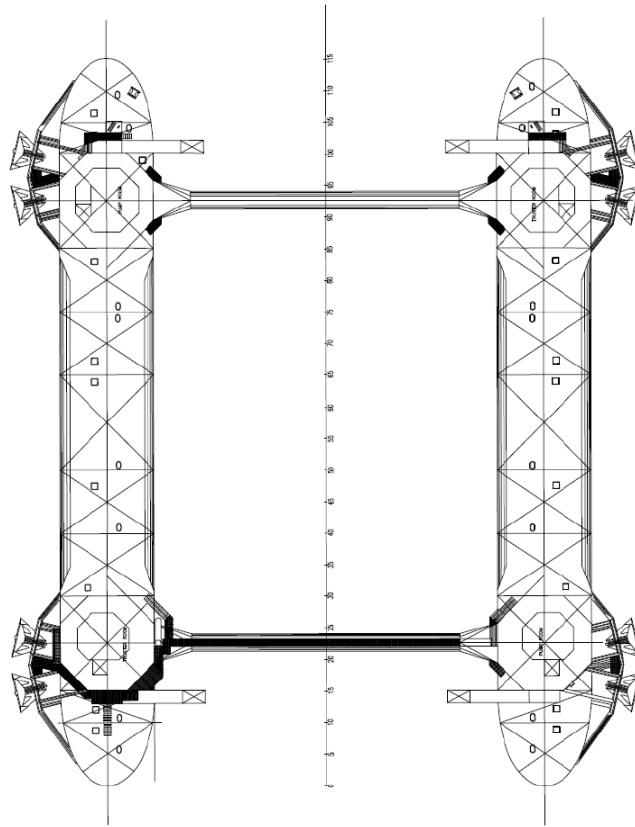
Eight (8) anchor wires, diameter 64 mm, length up to 2.300 m.

Four (4) double type anchor winches, each with two drums for anchor wire.

Four (8) mooring pendant wires, each 60 m.

For capacities see Volume 2, Section 5 “Anchoring”.

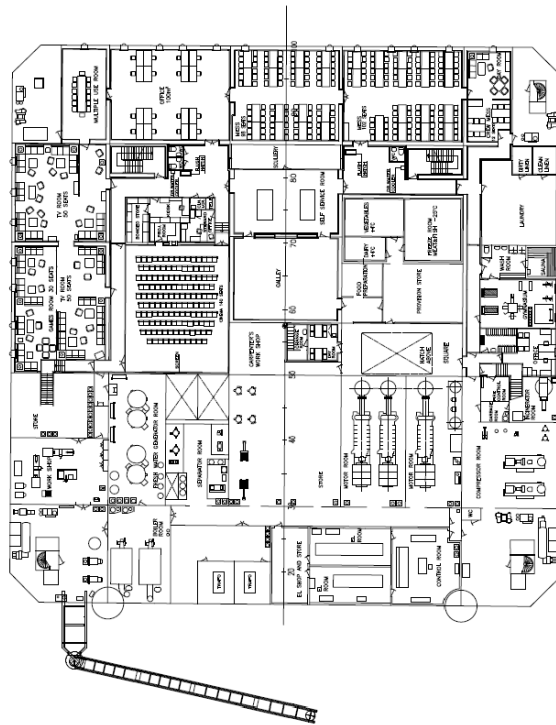
VESSEL DESCRIPTION (cont.)



NOTE
SEE FOOT NOTATED POINTE AREAS

NO.	DATE	BY	CHKD.	REVISION
1				GENERAL ARRANGEMENT
2				PONTOON DECK
				PROJECT NO. 10411 SHEET NO. 5/20

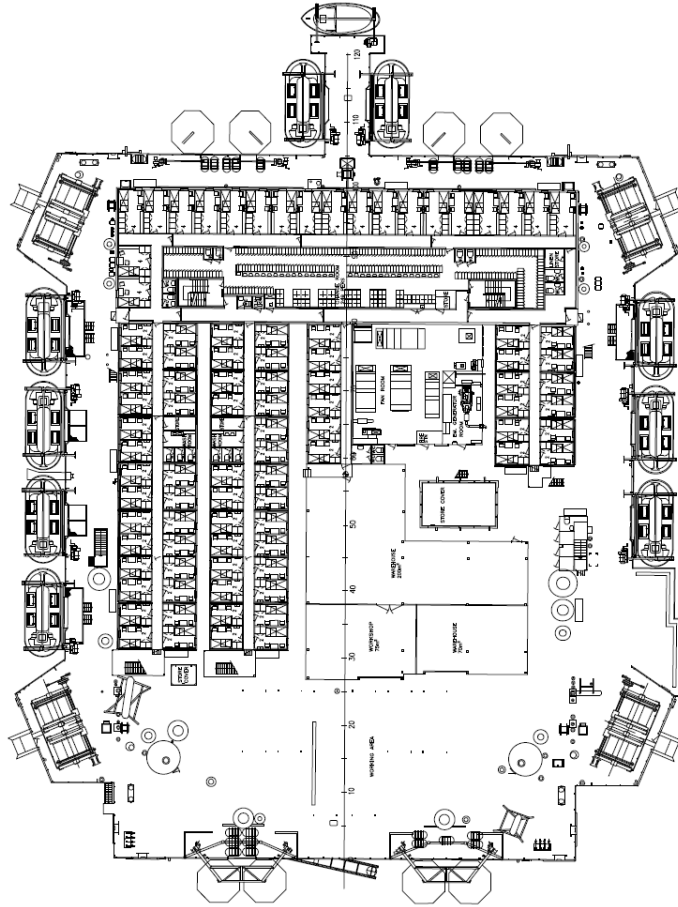
VESSEL DESCRIPTION (cont.)




NOTE
RED TEXT INDICATES PROTECTIVE AREAS

NO.	DATE	BY	REVISION
1	15/01/2011	PK	ISSUED FOR TENDER
JASMINIA GENERAL ARRANGEMENT LOWER DECK			
PROJECT NO. 141001			SHEET NO. 2 of 11

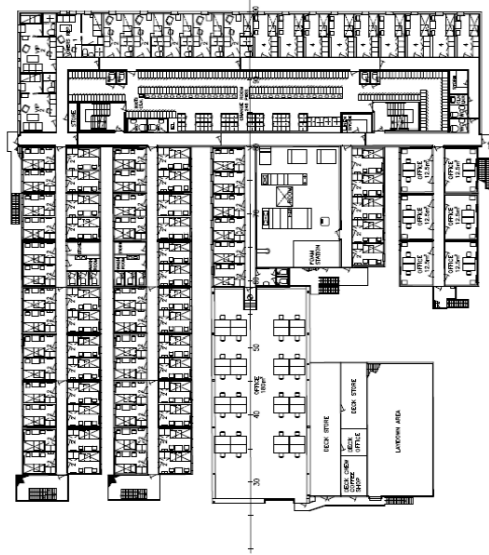
VESSEL DESCRIPTION (cont.)



NOTE
RED TEXT INDICATES INDEX AREAS

PROJECT NUMBER		DATE	
NO.	REV.	DATE	BY
DESIGNER		DRAWN	
CHECKED		DATE	
			
JASMINIA GENERAL ARRANGEMENT MAIN DECK			
SCALE		SHEET NO.	

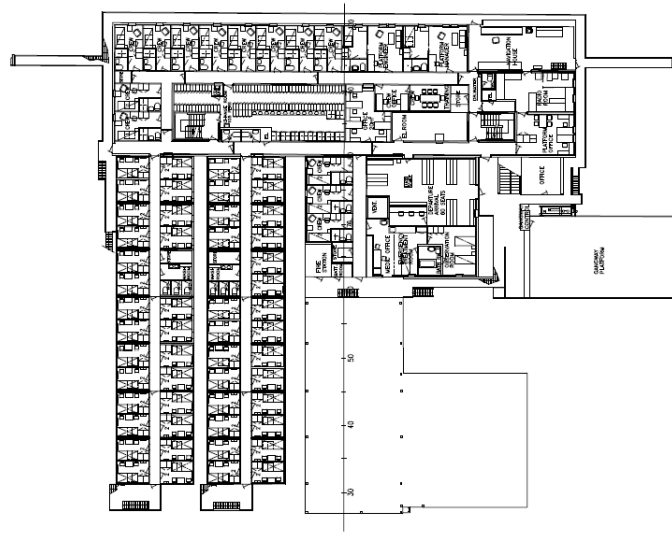
VESSEL DESCRIPTION (cont.)



NOTE
RED TEXT INDICATES PIERCE AREAS

PROJECT NUMBER: 1418101		DATE: 11/20/20	
NO.	REV.	DATE	BY
1	1	11/20/20	1418101
		JASMINIA GENERAL ARRANGEMENT 2ND DECK	
SHEET NO. 1418101-01		TOTAL SHEETS 1418101-01	

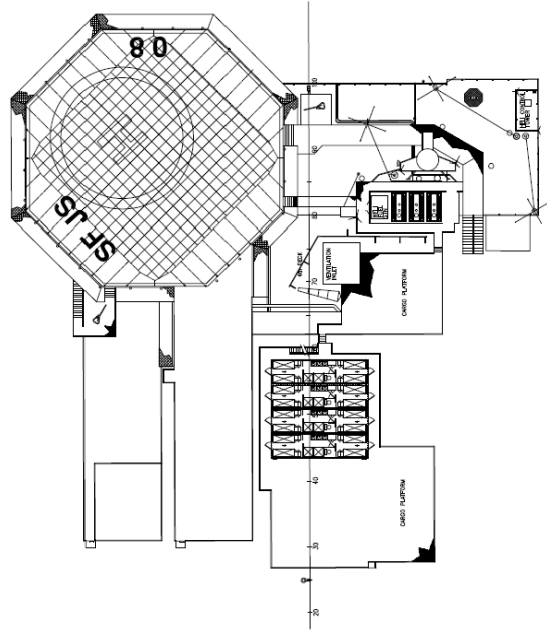
VESSEL DESCRIPTION (cont.)



NOTE
RED TEXT INDICATES PDECK AREAS

NO.	REV.	DATE	BY	CHKD.	DESCRIPTION
JASMINIA GENERAL ARRANGEMENT 3RD DECK					
PROJECT NO. 14-0011					SHEET NO. 3 of 11

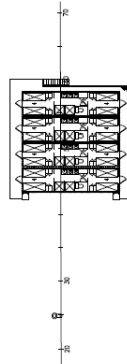
VESSEL DESCRIPTION (cont.)



NOTE
RED TEXT INDICATES PENEK AREAS

NO.	REV.	DATE	BY	CHECKED	DATE	REVISION
1						
						
JASMINA GENERAL ARRANGEMENT 4TH DECK						
Scale	1:1	Project No.	14/0101	Sheet No.	11	Total No. of Sheets

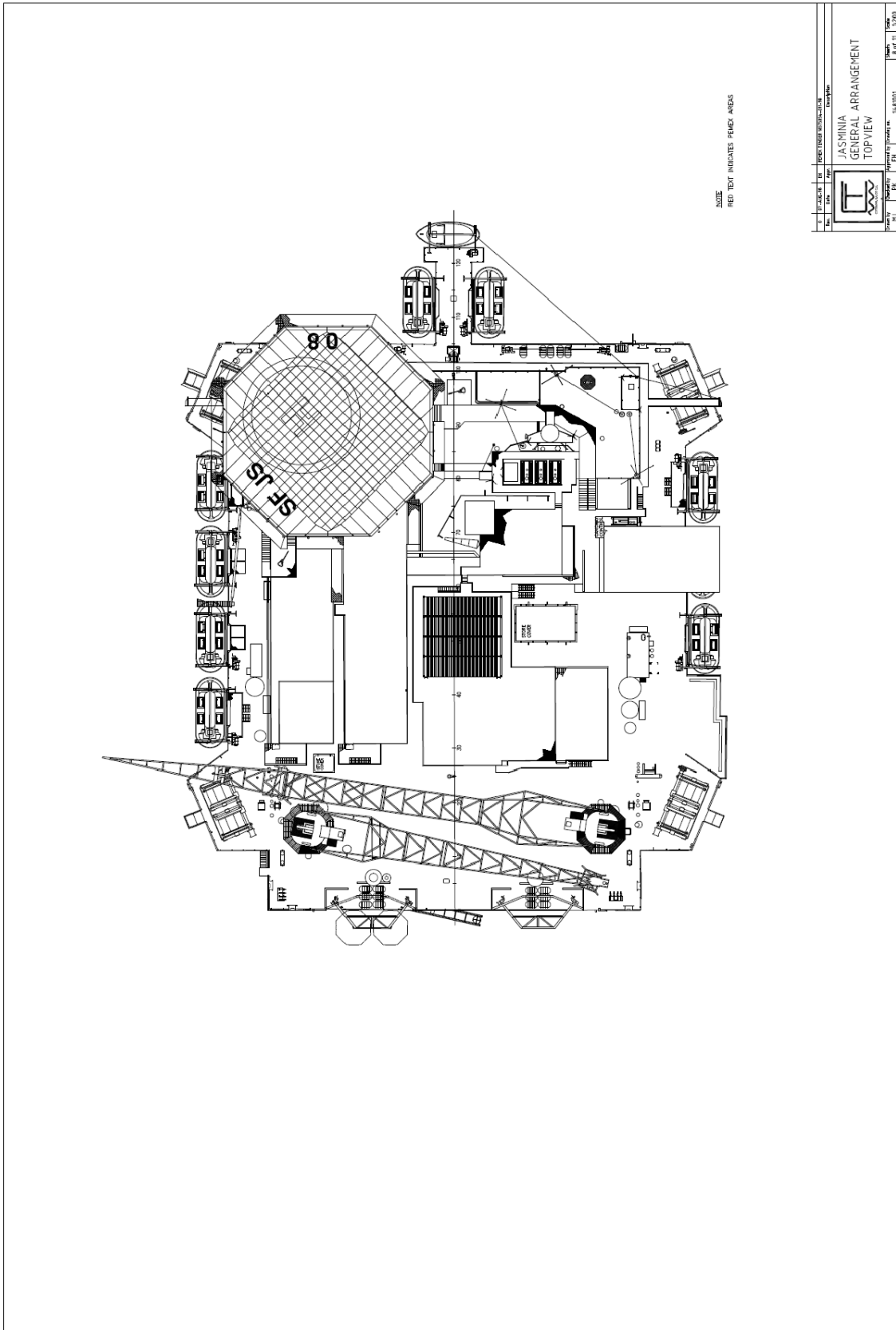
VESSEL DESCRIPTION (cont.)



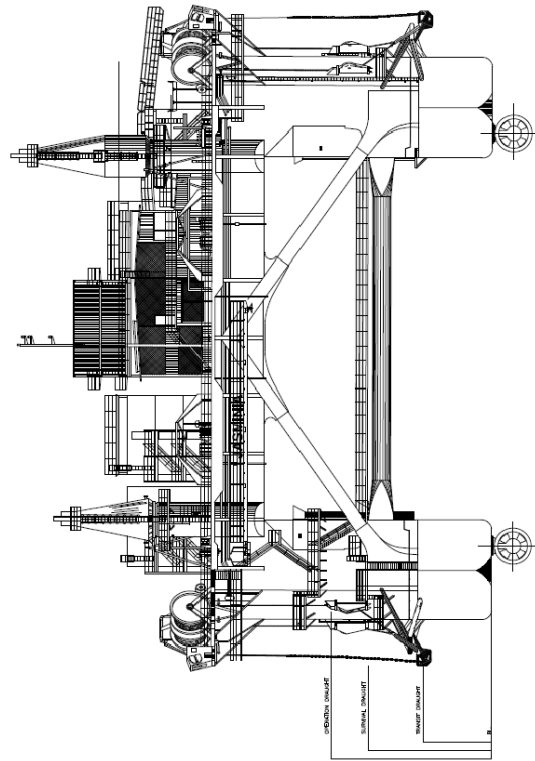
NOTE
RED TEXT INDICATES PENDING AREAS

PROJECT NUMBER		DATE	
JASMINA		14/05/2011	
GENERAL ARRANGEMENT		14/05/2011	
5TH DECK		14/05/2011	
NO.	PK	BT	1300

VESSEL DESCRIPTION (cont.)



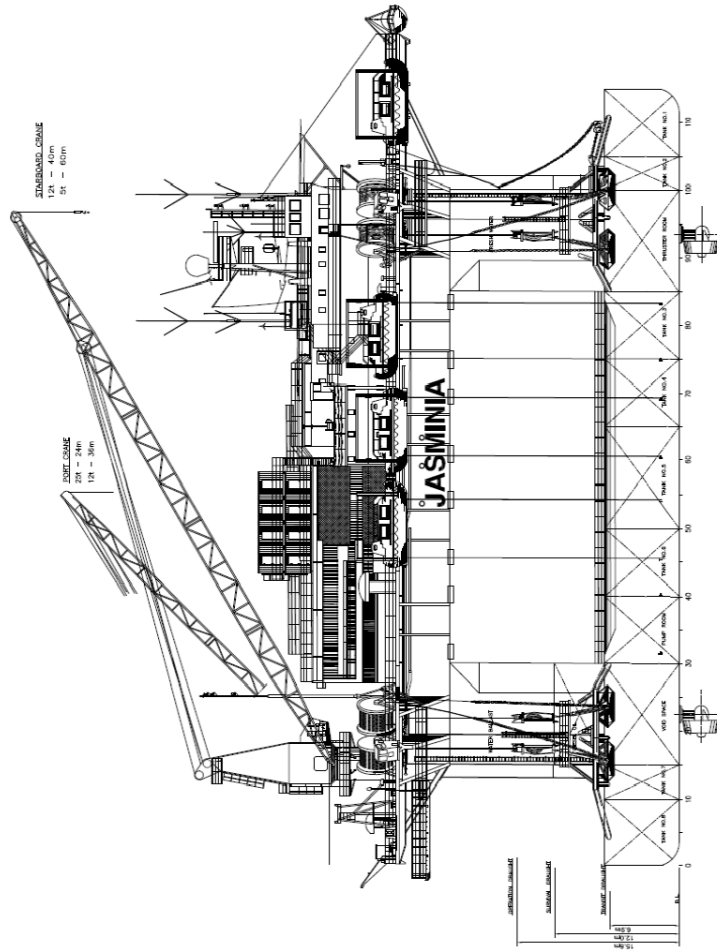
VESSEL DESCRIPTION (cont.)



NOTE
RED TEXT INDICATES PDCX ANGUS


NO.	REV.	DATE	BY	CHKD.	DESCRIPTION
JASMINIA GENERAL ARRANGEMENT AFT VIEW					
PROJECT NO.	18/001	DATE	18/001	SCALE	1:1
Page 11 of 11					

VESSEL DESCRIPTION (cont.)



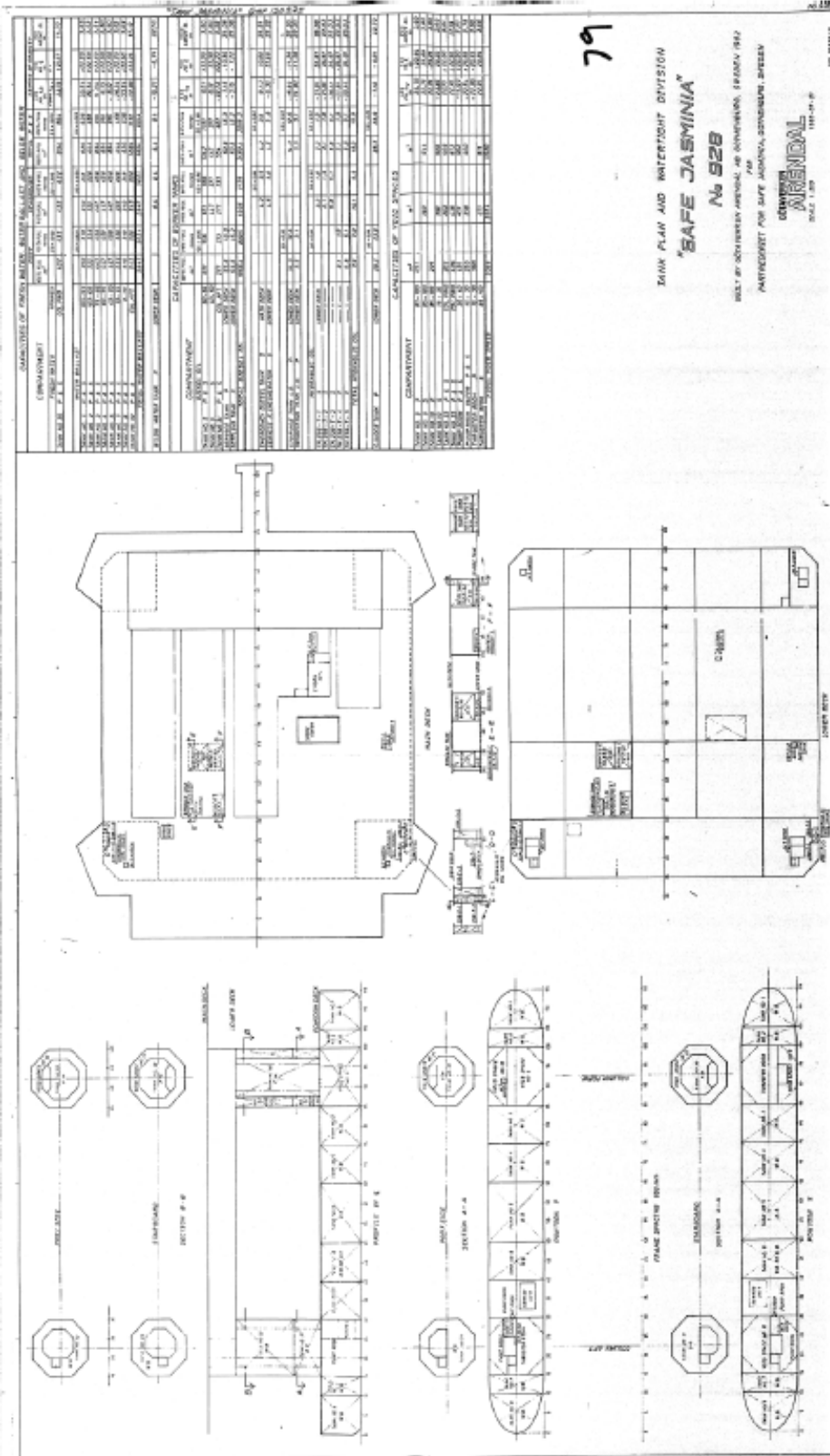
NOTE:
RED TEXT INDICATES PERMEX AREAS

NO.	REV.	DATE	DESCRIPTION


JASMINIA
 GENERAL ARRANGEMENT
 SIDE VIEW

DESIGNED BY	DATE
CHECKED BY	DATE
APPROVED BY	DATE
SCALE	1:1
PROJECT NO.	14-0101
SHEET NO.	11 of 11
TITLE	DESIGN

VESSEL DESCRIPTION (cont.)



79

NAVY PLAN AND INTERIOR DIVISION
"SAFE JASMINIA"
 No 928

BUILT BY SCHREIBER WERFT AG BREITENBURG, BERLIN 1942
 PATENTRIGHT FOR SAFE JASMINIA, SCHREIBER, BREITENBURG

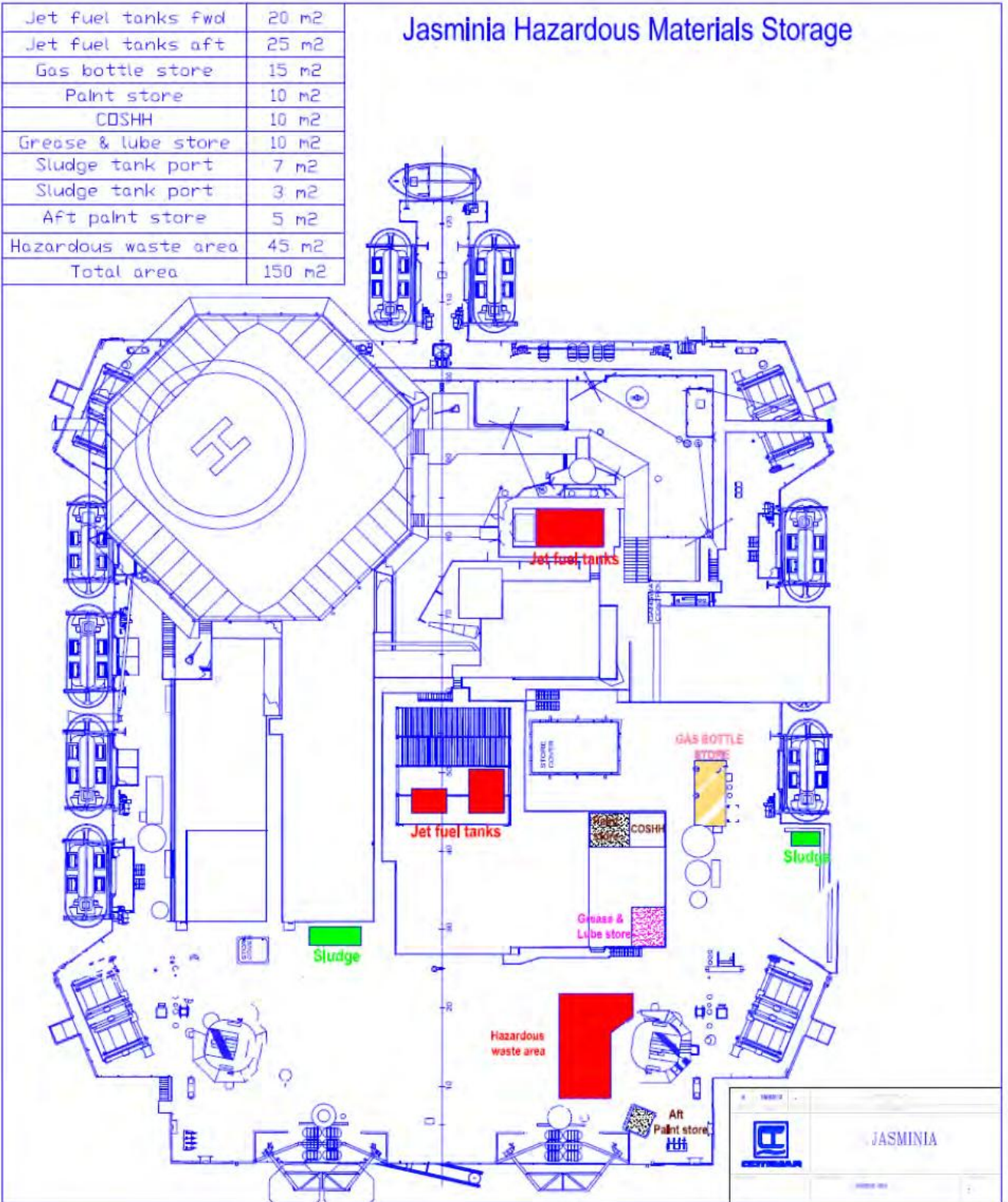
OWNERS
ARENDAAL
 1944-45-46

NO. 84812

VESSEL DESCRIPTION (cont.)

Jet fuel tanks fwd	20 m2
Jet fuel tanks aft	25 m2
Gas bottle store	15 m2
Paint store	10 m2
COSHH	10 m2
Grease & lube store	10 m2
Sludge tank port	7 m2
Sludge tank port	3 m2
Aft paint store	5 m2
Hazardous waste area	45 m2
Total area	150 m2

Jasminia Hazardous Materials Storage



VESSEL DATA (cont.)

The helicopter landing platform is designed for service by one Sikorsky S-61 and is located on top of the deckhouse. Additionally, a helicopter parking deck is arranged adjacent to the landing platform, suitable for a Sikorsky S-61.

The platform's prime functions are as living quarters for offshore workers and construction platform for the construction of fixed installations.

Identification

Call sign: ELFN9
Platform type: GVA 2000
Delivered: 1982
Construction Yard: Götaverken Arendal AB
Classification: Lloyd's Register of Shipping + OU 100 A1 Accommodation Unit + LMC, UMS, HELIDECK
LR/IMO Number: 8117811

Dimensions

Length over all	84.94 m
Length of pontoon	74.75 m
Breadth extreme	65.37 m
Breadth outside pontoons (molded)	54.78 m
Pontoon breadth (molded)	9.75 m
Pontoon height (molded)	7.20 m
Distance between CL pontoons	45.00 m
Column diameter forward and aft (molded)	9.75 m × 9.75 m
Height to Lower Deck (molded above BL excl. thrusters)	22.20 m
Height to Main Deck (molded above BL excl. thrusters)	27.20 m
Height to Top of Crane House (mld A/BL excl. thrusters)	46.79 m
Air gap operation draft	6.60 m
Air gap survival draft	10.20 m
Horizontal Transverse Bracing (diameter)	1.80 m
Transverse Diagonal Bracing	1.30 m × 1.30 m
Main Deck Length over all	79.95 m
Main Deck Breadth over all	64.55 m

Displacement and Draft

	<u>Transit</u>	<u>Operation</u>	<u>Survival</u>
Total draft (m)	10.70	19.40	15.80
Draft excl. thrusters (m)	6.91	15.61	12.01
Displacement (tonnes)	9722	13254	12050
Deck load (tonnes)	790	1582	1582

(Drafts and displacements taken from Volume 3, Section 7).

VESSEL DATA (cont.)

Tank Capacities

Water ballast	5894 m ³	(including Tank No. 6S)
Fresh water	864 m ³	
Diesel oil (98%)	2008 m ³	(excluding Tank No. 6S)
Lubricating oil	36 m ³	

Refer to Volume 3, Section 4 for additional details on tank capacities.

Speed

Trial speed with clean hull and in calm water and smooth sea at a mean draft of 6.90 m to be about 7.0 knots at a power on propulsion motors of $2 \times 2,400$ kW.

Present speed at transit draft in Bay of Campeche is about 3.0 knots.

Anchor and Mooring Equipment

Eight (8) anchors of “Flipper Delta” type, 9 tonnes each.

Eight (8) anchor wires, diameter 64 mm, length up to 2.300 m.

Four (4) double type anchor winches, each with two drums for anchor wire.

Four (8) mooring pendant wires, each 60 m.

For capacities see Volume 2, Section 5 “Anchoring”.

Deck Cranes

One (1) 12.5 tonnes Crane Stbd

12.5 tonnes at 11 m - 40 m

5 tonnes at 60 m

One (1) 25 tonnes crane, Port

7 tonnes at 9 m to 46 m

The cranes are of electro-hydraulic type. For additional details see Volume 5, Section 5 “Cranes”.

Working Deck

Approximately 550 m² of the Main Deck area is designed for load of 2 tonnes/m².

The remaining deck area (approx 300 m²) is designed for a load of 1.25 tonnes/m².

The stowage flats on top of the accommodation modules are designed for a load of 0.50 tonnes/m².

For additional details see Volume 2, Section 3 “Deck Load Plan”.

Helicopter Deck

The helicopter deck is capable of supporting the loads occurring during operations by a Sikorsky Type S-61N helicopter, plus adjacent parking area for a Sikorsky S-61N.