



# PREFABRICATED HOUSE

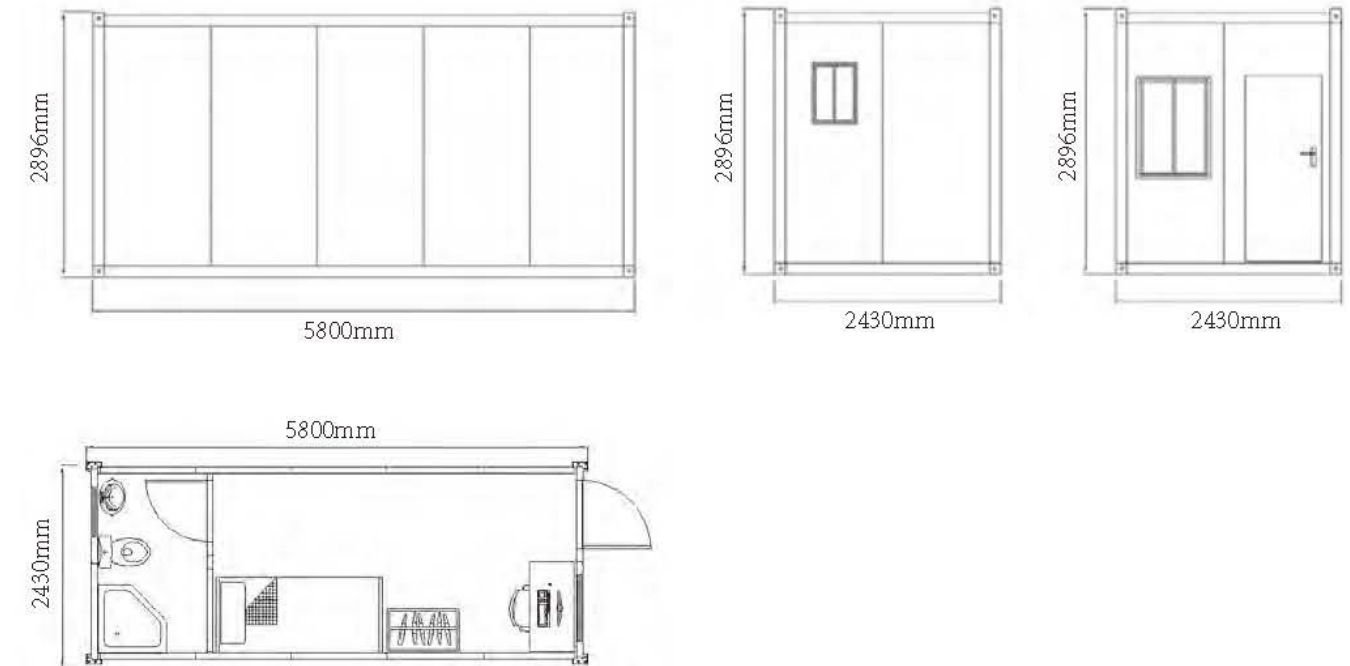




# SHIPPING FLAT PACK CONTAINER



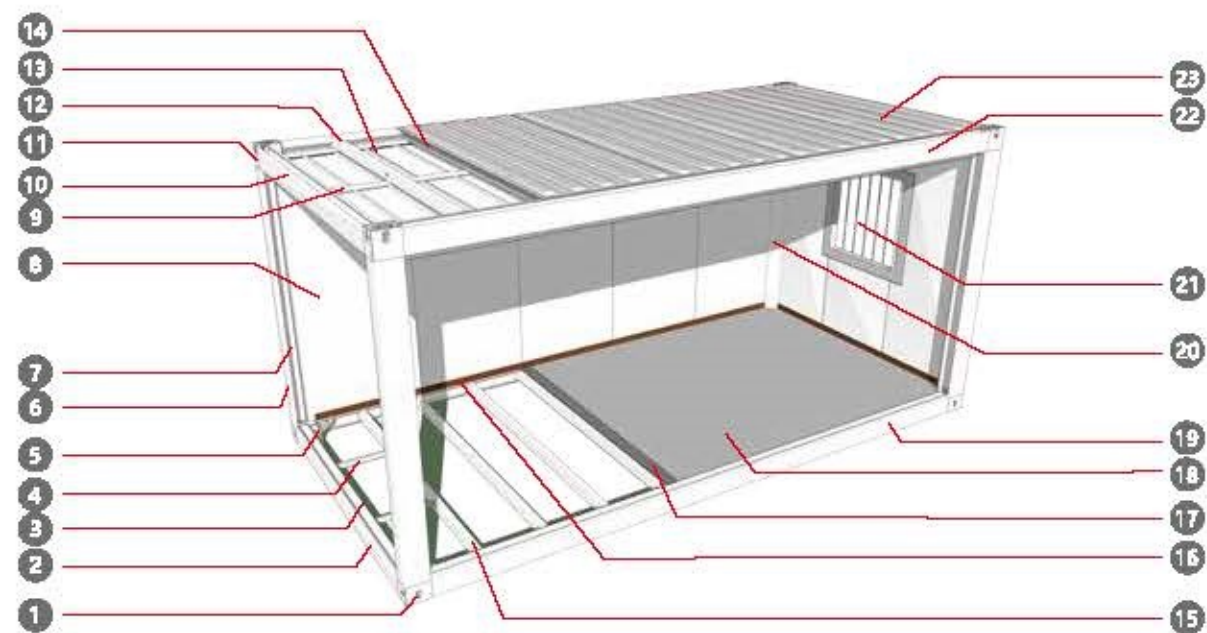
## Data



1. The thickness of the top of the Shipping Flat-pack container reaches 1.5mm (only 0.4-0.5mm for similar products); Test of 54 people standing on the top at the same time, no deformation and water leakage;
2. Fully and Automatically welded by robots, no glued, and doubled the service life ;
3. Adopts 360° suspended full spray, anti-corrosion, and maintenance-free within 15 years;
4. With safe and reliable structure, with earthquake resistance level 8 and wind resistance level 12, the overall load-bearing capacity of the roof can reach 2.3 tons, usage period more than 20 years;
5. Diversified combination: taking a single cabinet as a unit, it can be combined arbitrarily. Can be assembled in any length and width direction, can be stacked in three layers, and can be added with decorative roofs and terraces;
6. Energy saving and environmental protection: adopting the factory manufacturing + on site installation model, the project can reduce construction water consumption, concrete damage by about 60%, reduce construction waste and decoration waste by about 70%, save about 50%, and increase overall production efficiency by about 2-3 times;
7. Convenient to move: the overall performance of the packing box is good, and it is convenient to move, without disassembly when moving;
8. It has a wide range of applications and can follow up with different needs. It can be used as office, accommodation, hall, bathroom, kitchen, dining room, recreation room, meeting room, clinic, laundry room, storage room, command post etc



# Product Details



- |                                      |   |
|--------------------------------------|---|
| 1 Bottom frame corner fitting        | 13 Cealling panel                                     |
| 2 Bottom frame short side beam       | 14 100mm glass insulation cotton                      |
| 3 Flooding trough                    | 15 Bottom frame secondary beam                        |
| 4 Bottom frame strenghtning beam     | 16 PVC skirting line                                  |
| 5 Bottom frame bevel reinforced beam | 17 Cement fiberboard                                  |
| 6 Corner column                      | 18 PVC floor leather                                  |
| 7 UPVC downpipe                      | 19 Bottom frame long side beam                        |
| 8 75mm rock wool sandwich board      | 20 Corner column hemming                              |
| 9 Ceiling panel connector            | 21 Integrated plastic steel window with burglard mesh |
| 10 Top frame short side beam         | 22 Top frame long side beam                           |
| 11 Top frame corner fitting          | 23 1.4mm roof slab                                    |
| 12 Top frame secondary beam          |   |

# Types of electical optional



Plugs



Exhaust fan



Districtiution Box



Ceiling lights

# Doors and Windows



PVC door



PVC sliding window



Door handle

# Frame structure of materials



Top frame corner fiting



Corner column hemming



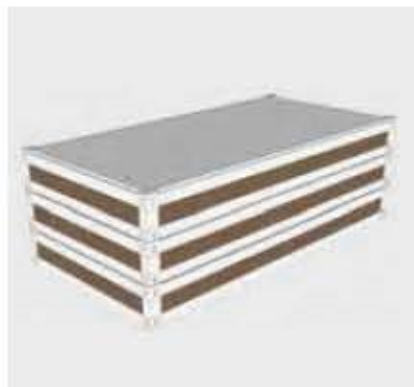
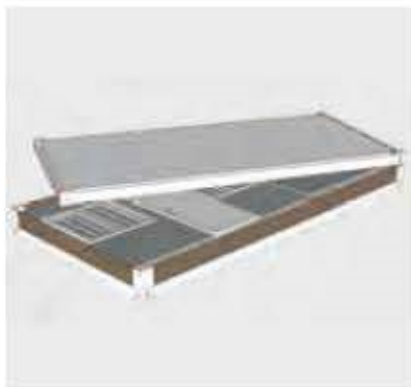
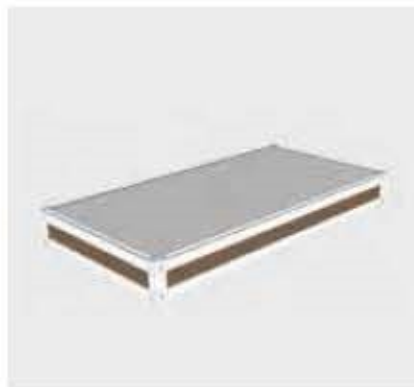
Cement fiberboard



UPVC downpipe



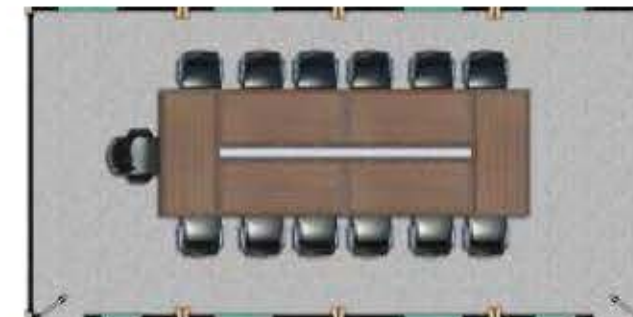
# Packing and shipping



# Typical layouts



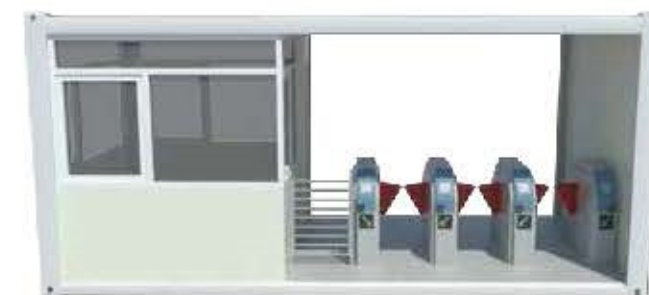
Office



Meeting room



Toilet



Entrance

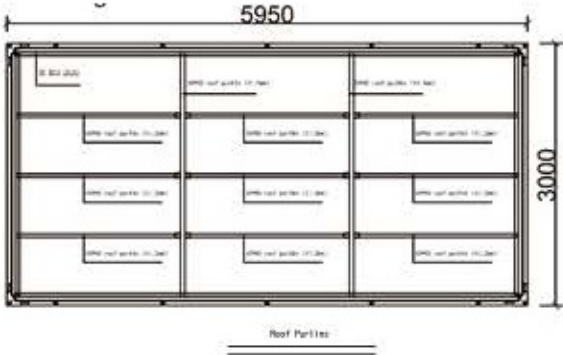
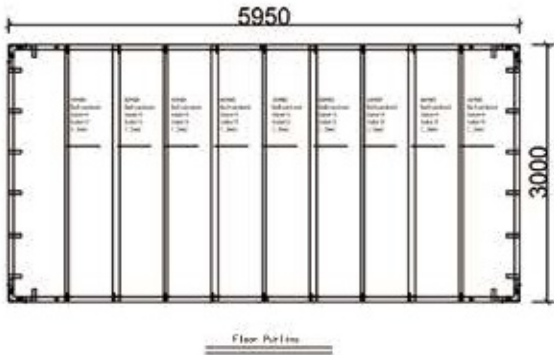
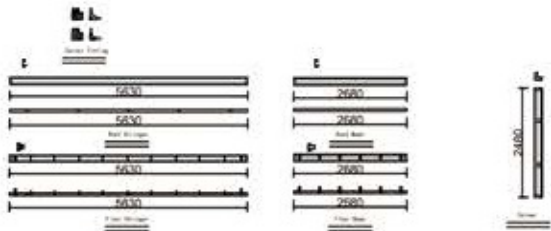


Kitchen



Dormitory

# DETACHABLE CONTAINER





# Specification

Product specification	Length*width*height	Inner 5800mm*2800mm*2500mm/Outer 5950mm*3000mm*2800mm
	Roof form	Roof tile, color steel plate
	Drainage form	External drainage organization
	Number of layers	≤3 layers
Design Parameters	Service life	8 years
	Earthquake resistance	Level 8
	Wind resistance	Level 12
	Fire prevention	Class B1, flame retardant



Project CASE

# Material list

Roof	Roof panel	980 type galvanized color coated top tile (0.45mm thick)
	Insulation cotton	5CM thick rock wool, bulk density 14KG
	Ceiling board	Type 981 galvanized color-coated pressure top tile (0.25mm thick)
Floor	Decorative panel	Not included in the standard box, can be customized according to customer requirements, additional charges
	Substrate	Cement sanding board, 1147*2800,
Wall	Wall panel	950 type 50mm rock wool sandwich panel
	Wall panel	"Double-sided color steel plate 0.3mm thick
	Keep warm	"Rock wool, bulk density 80KG
Gate	specification	950*2070
	Material	930*1100
window	specification	925*1200
	Frame material	Aluminum alloy anti-theft window
	glass	Single glass
Electricity	Voltage	Not included in the standard box, can be customized according to customer requirements, additional charges
	wire	
	Distribution box	
	illumination	
	socket	
decoration	Top and column edging	Color steel angle aluminum
	Skirting	Brown PVC







## PREFABRICATED K HOUSE



Taking the advantages of the strength of sandwich wall panels and rood panels,flat-roof predab houses become a fixed mobile housing system with connectionsof nails

## Construction Area of K-style Prefab House

W L	Single Floor (3P)			Double Floor (6P)			Triple		
	3K	4K	5K	3K	4K	5K	3K	4K	5K
4K	45.53	59.07	72.61	103.79	130.87	157.95	176.84	217.46	258.08
5K	56.67	73.52	90.38	126.97	160.68	194.39	212.07	262.63	313.19
6K	67.81	87.98	108.14	150.16	190.49	230.82	247.31	307.81	368.30
7K	78.95	102.43	125.90	173.35	220.30	267.26	282.54	352.98	423.41
8K	90.09	116.88	143.67	196.53	250.11	303.69	317.78	398.15	478.52
9K	101.22	131.33	161.43	219.72	279.93	340.13	353.01	443.32	533.63
10K	112.36	145.78	179.19	242.91	309.74	376.57	388.25	488.50	588.74
11K	123.50	160.23	196.96	266.09	339.55	413.00	423.48	533.67	643.85
12K	134.64	174.68	214.72	289.28	369.36	449.44	458.72	578.84	698.96
13K	145.78	189.13	232.48	312.47	399.17	485.88	493.96	624.01	754.07
14K	156.92	203.58	250.25	335.65	428.98	522.31	529.19	669.18	809.18
15K	168.06	218.03	268.01	358.84	458.79	558.75	564.43	714.36	864.29







## PREFABRICATED T HOUSE



Prefab T house is a kind of commercial house with complete new ideas. It is composed of light gauge steel keel, sandwich panel integrated by standard module series, and all parts are connected with reinforced screws. It can be assembled and disassembled rapidly and conveniently. Life span can be up to 12-15 years, which can be reused at least 8 times.

### Specification

- 1、 Life span : 12-20 years.
- 2、 Ind resistance : 88.2-117km/h.
- 3、 Earthquake resistance : 7 grade.
- 4、 Structure : steel structure.



Project

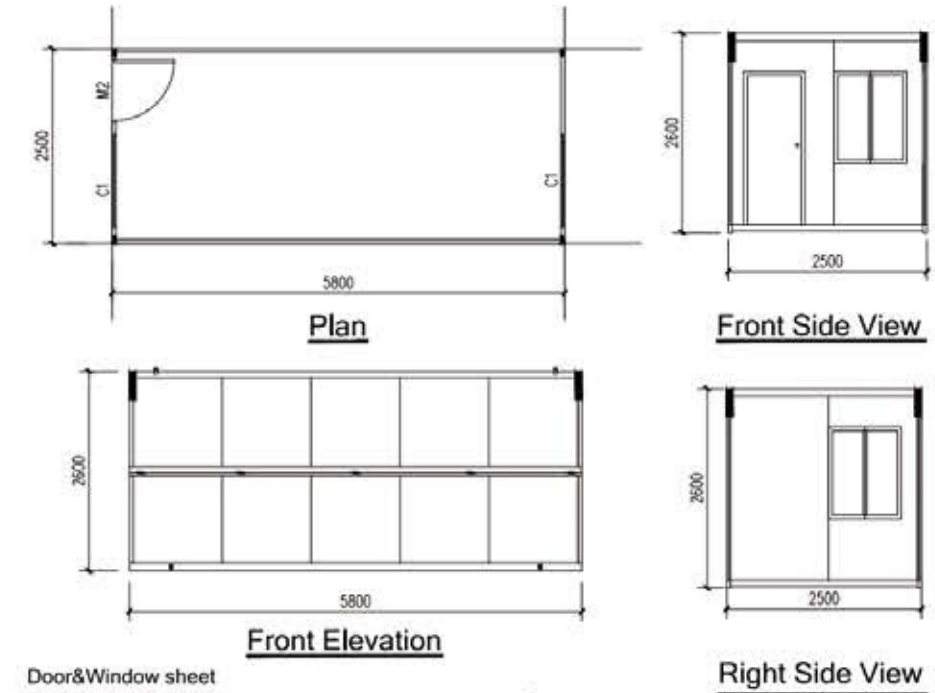


# FOLDABLE CONTAINER

Folding container is the typical modular house which can be installed with only 4 steps. It is environmental protection and widely used in many areas.



20' Folding Container house 2.50mX5.8mX2.6H



Door&Window sheet

Item	Code	Size(mm)	Qty	Remark
Door	M2	800X2000	1	IEPS Sandwich panel door
Window	C1	950X1200	2	Aluminum sliding window with security bar

## Introduction

The folding container has the standard modular design and manufacture, and it's environment protective.



Installation process





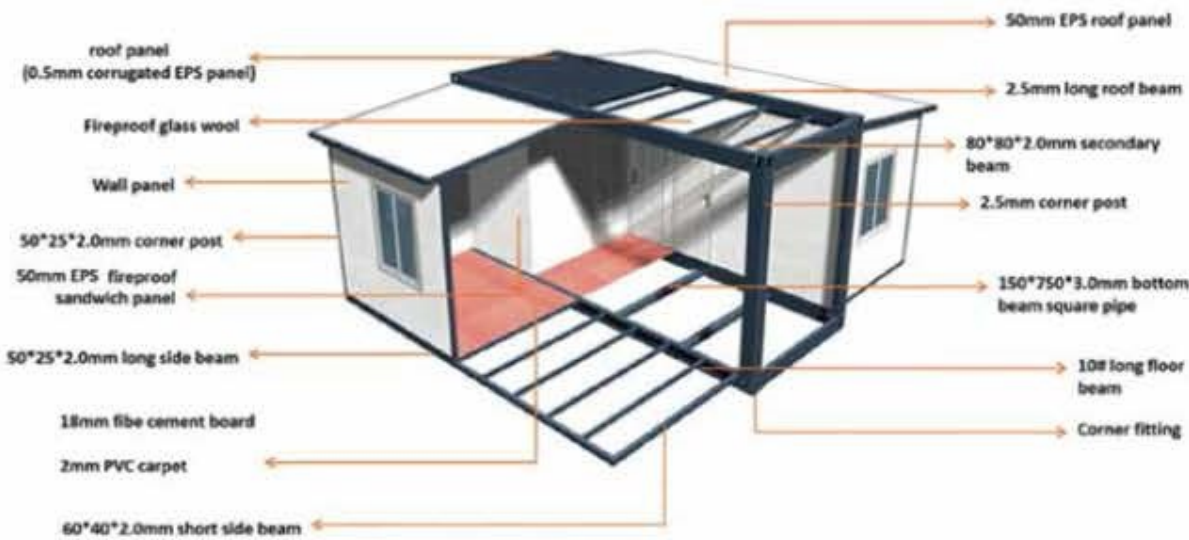
# Expandable Container House



## Installation process



## Product Details





# DIY SHIPPING CONTAINER



## INTRODUCTION

It has the most similar lookings with standard shipping container, additional advantages are much more economical, bigger size and insulated itself, Even simple modifications can make it to be amazing dormitory, shop, restaurant, office, bathroom ect. All materials will be prefabricated and prepared in factory, easy welding steps can finish to make your beautiful DIY container house



## INSTALLATION TEAM



Meeting room



Office



Homestay restaurant



Restroom



Bedroom



Guestroom



Shipping flat pack container is one of the main products of CGC. Shipping flat-pack container hotel is star level hotel which constructed by the traditional shipping flat-pack box as component, through flexibly combining the internal space, designing space by modular way , adding doors and windows, improving sound insulation meanwhile, decorating the interior with star residential space standards , plus soft collocation, household appliances, furniture and household accessories to create a star standards living space. The long and square type of shipping flat-pack container can also be a hotel room for vacation after well-designed . The shipping flat-pack box hotel not only shortens the construction period and saves the cost, but also can be recycled and reused in the future, which is more in line with the concept of green environmental protection.



## Office Building Plan



## Indonesia Samanea Commercial City





**Gaodeng International Plaza Marketing Center Project, Gaoming District, Foshan City**



**Shenzhen Tea Expo Garden**



**Manager Department, EPC Project of New City Interchange, by China Railway Bridge Bureau Group Sixth Engineering Co., Ltd.**



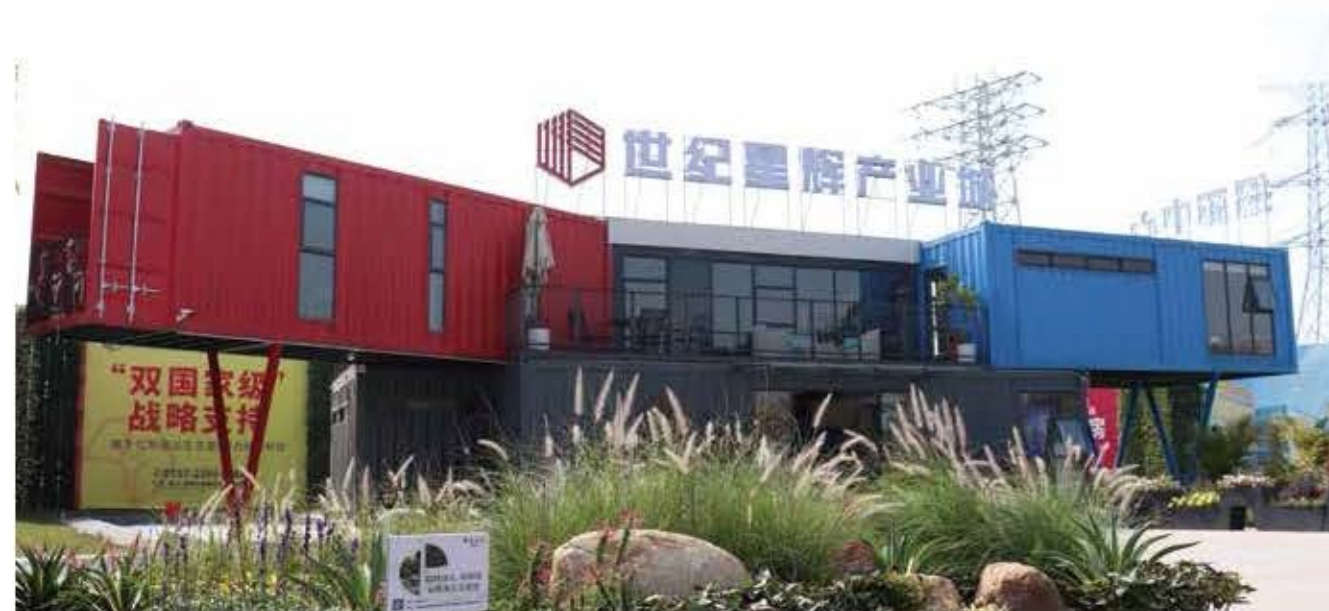
**Zhuhal Hengqin Star Music Camp**















## STEEL STRUCTURE FEATURES

In terms of structural performance:

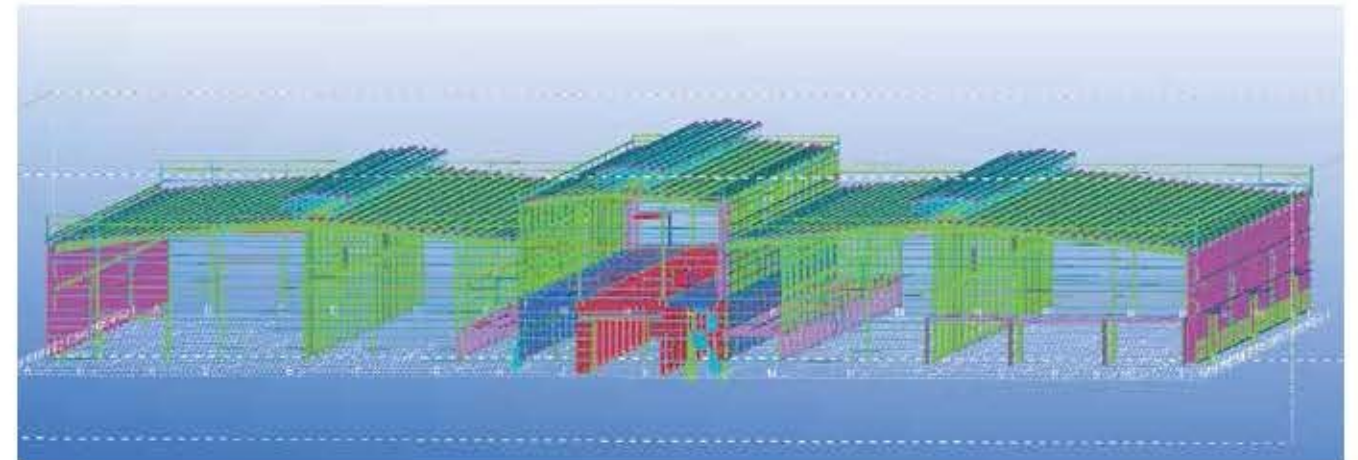
1. Excellent seismic performance
2. Light structure
3. High construction accuracy
4. Carry out a variety of architectural creative modeling

In terms of environment protect:

1. Less site pollution
2. Green
3. Energy-saving

In terms of economic benefits:

1. Save the basic cost
2. Short construction period and small space occupation
3. Low investment risk
4. Improve space utilization





# PROJECT



**Project:** Fujian Lesso Factory  
**Work Scope:** 3 Factories  
**Site area:** 67,000 m<sup>2</sup>  
**Lead time:** Nov, 2020



**Project:** Jiangxi Lesso Factory  
**Work Scope:** 3 factories  
**Site area:** 250,000 m<sup>2</sup>  
**Lead time:**  
Nov, 2020 for 3 Factories;  
Feb, 2021 for 12 Factories



**Project:** Indonesia Lesso Factory  
**Work Scope:** 3 Factories  
**Site area:** 37,230 m<sup>2</sup>  
**Lead time:** Feb, 2021



**Cambodia Investment Promotion Center In Phnom Penh**



**Jiangxi Nanchang Lesso Technology Co., Ltd. project**



**Phase II Project of Yunnan Lesso Technology Development Co., Ltd.**



**Fujian Lesso New Material Technology Co., Ltd. Phase I Plant Project**

