

# FACTORY EQUIPMENT



**Roof And Floor Cold Drawing Machine**



**Roof And Floor Assembly Platform**



**Laser Cutting Machine**



**ISO Roof Punching Machine**



**ISO Roof Automatic Welding Machine**



**Plate Shearing Machine**



**Bending Machine**



**Punching Machine**



**Roof Short Beam Automatic Welding Machine**



**Corner Post Automatic Welding Machine**



**Corner Post Grinding Machine**



**Corner Casting Six Axis Threading Machine**



**Corner Casting Six Axis Drilling Machine**



**Floor Board Seven Holes Drilling Machine**



**Automatic Painting Line**

# APPLICATION FILEDS

Star house flat pack containers and modified containers can be widely used in the following fields:



**Integrated Camp**



**Office**



**Classroom**



**Residence**



**Hotel**



**Canteen**



**Shop**



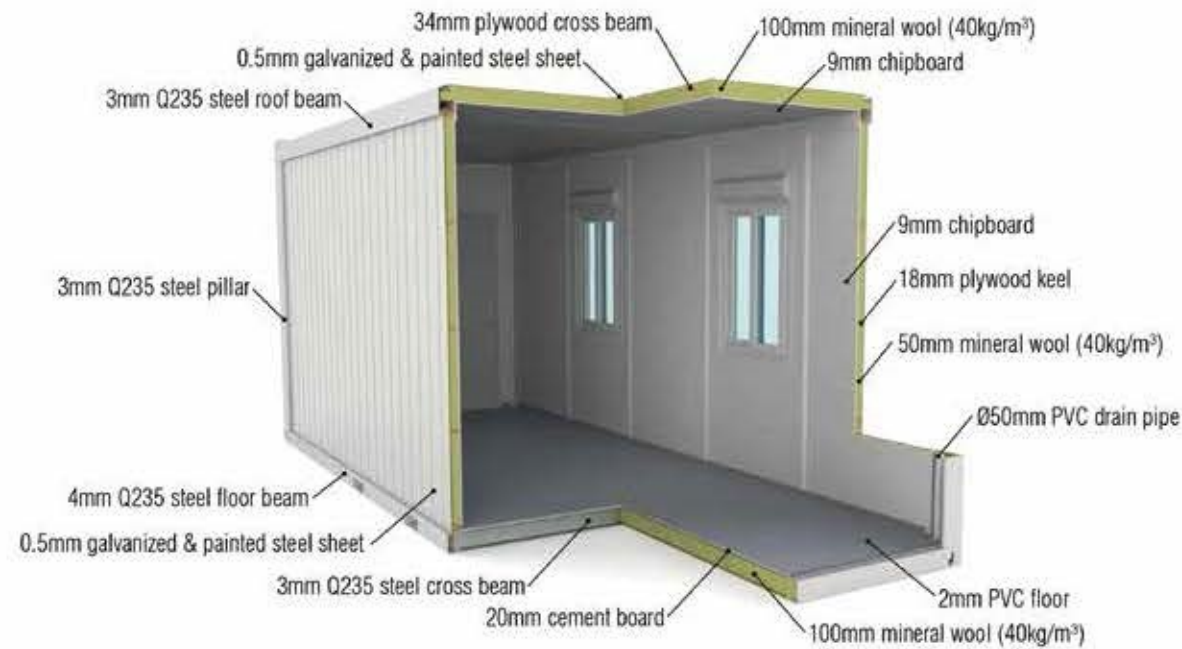
**Toilet And Shower**







# FLAT PACK CONTAINER



Flat pack container is a multi-function standard container, which dimensions conform to the ISO container transportation. It is a prefabricated building structure composed of roof, floor and pillars. This structure enables the containers to combine in longitudinal and transverse directions without limits, or be stacked in 2 floors or 3 floors in height.

The walls of the container are made of light insulation panels, and the position can be adjusted as needed. In the process of transportation, the flat pack containers can be packed in the form of 4 per bundle which height is 2591 mm(ISO dimensions).

## Advantages



### Easy Transportation

Flat pack containers are designed according to ISO shipping containers, which makes them suitable for ocean freight. Each unit has forklift pockets on the floor for handling.



### Fast Construction

4 skilled workers can finish assembling 1 standard unit within 2.5 hours; Up to 40% time saving on construction over traditional building techniques.



### Flexible Combination

Multiple modular building can be easily created by stacking and interlinking units together. Internal wall panels can be removed and changed at the clients' discretion to provide flexible layout options.



### Cost Saving

3-6 units can be packed in one bundle; up to 75% transportation cost can be saved compared with Traditional Architecture or modified containers.



### Green & Sustainable

The steel structure of cabin can be recycled. Our manufacturing facilities are energy efficient with strict governance on wastage of materials and water supply.

## Dimensions



Type	External Dimensions(mm)			Internal Dimensions(mm)			Weight(kg)
	Length	Width	Height	Length	Width	Height	
20'X8' Standard Unit	6058	2438	2791	5858	2238	2520	2000
8'X8' Mini Corridor Unit	2438	2438	2791	2238	2238	2520	1100
10'X8' Short Unit	3025	2438	2791	2825	2238	2520	1250
16'X8' Corridor Unit	4888	2438	2791	4688	2238	2520	1700
24'X8' Extra Unit	7200	2438	2791	7000	2238	2520	2300
30'X8' Ultra Long Unit	9000	2438	2791	8800	2238	2520	2750
20'X10' Ultra Wide Unit	6058	2990	2791	5858	2790	2520	2220
10'X10' Mini Ultra Wide Unit	3025	2990	2791	2825	2790	2520	1400
30'X10' Ultra Wide And Long Unit	9000	2990	2791	8800	2790	2520	2980

\*Also available with external height 2591mm(8'6")/2896mm(9'6"), Maximum height 3000mm.



## 20ft Flat Pack Container Model



**SH101**

The basic flat pack unit. Suitable for offices, bedrooms, change rooms, and site accommodation houses etc.



**SH114**

VIP unit. Site office, holiday cabin or accommodation including private shower and toilet.



**SH104**

Two separate rooms can be used as dormitories or offices etc.



**SH111**

Two rooms with bath and toilet. Suitable for accommodation.



**SH114A**

Two single rooms with public bath 2 basins for each rooms.



**SH115**

Office or accommodation includes private bath and toilet.



**Ablution Unit**

3 showers, 3 toilets, 4 washbasins and 2 urinals.



**Toilet Unit**

6 toilets, 6 washbasins, also can replace washbasins into urinals for male toilet.



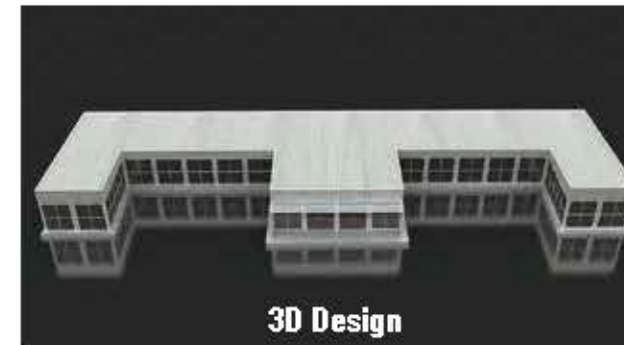
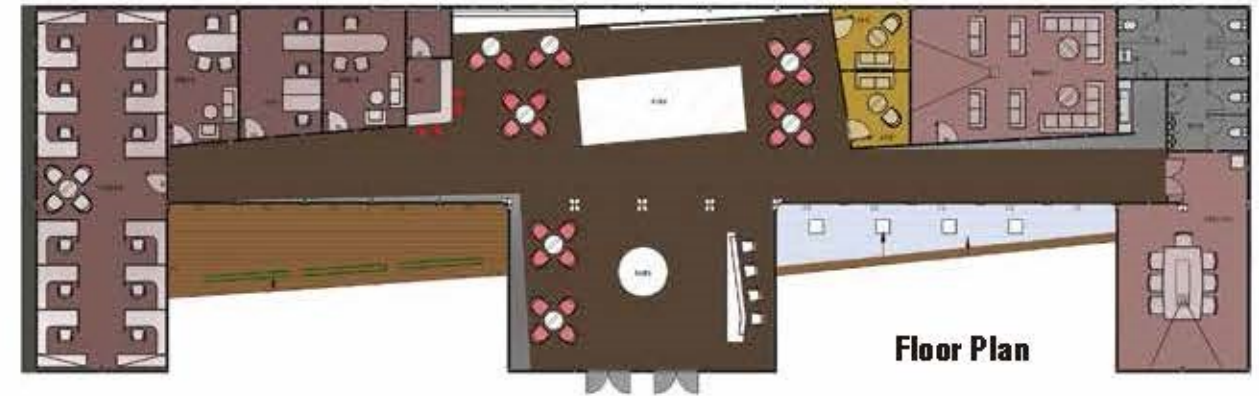
**Shower Unit**

6 showers, 6 washbasins and water heater is also available.

## Project & Layout



Location: Wuxi, China  
Application: Sales Office  
Project Profile: 7200mm\*2438mm\*18 units + 6058mm\*2438mm\*8 units total







Location: Shenzhen, China  
 Application: Office  
 Project Profile: 3 floor building, 6058mm\*2990mm\*87 units  
 + 1930mm\*5992mm\*5 units total



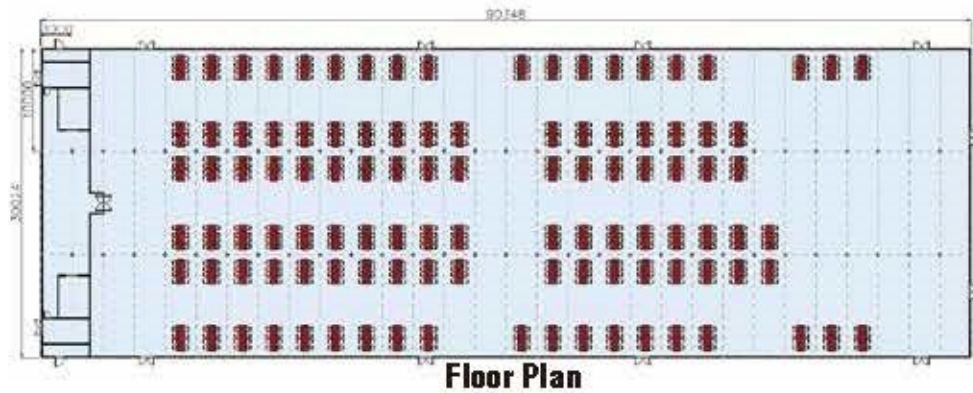
Location: Beijing, China  
 Application: Office  
 Project Profile: 4 floor building, 5500mm\*4000mm\*90 units total



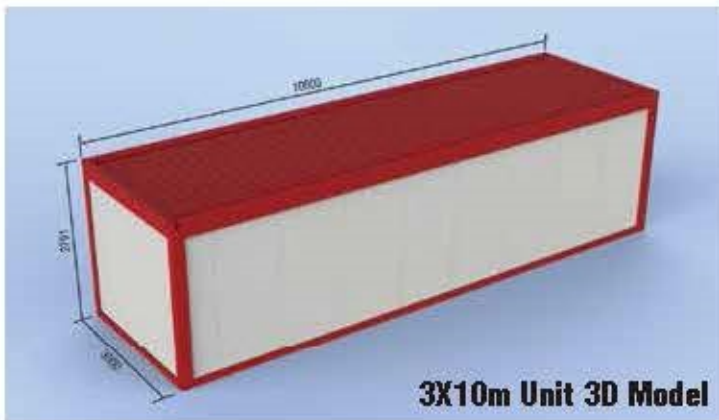




Location: Chile  
 Application: Dining hall  
 Project Profile: 10000mm\*3000mm\*90 units Total



Floor Plan



3X10m Unit 3D Model



Location: Chile  
 Application: Hospice  
 Project Profile: 3 floor building, 6060mm\*3000mm\*25 units + 6000mm\*3000mm\*2 units + 4530\*2500\*4 units total



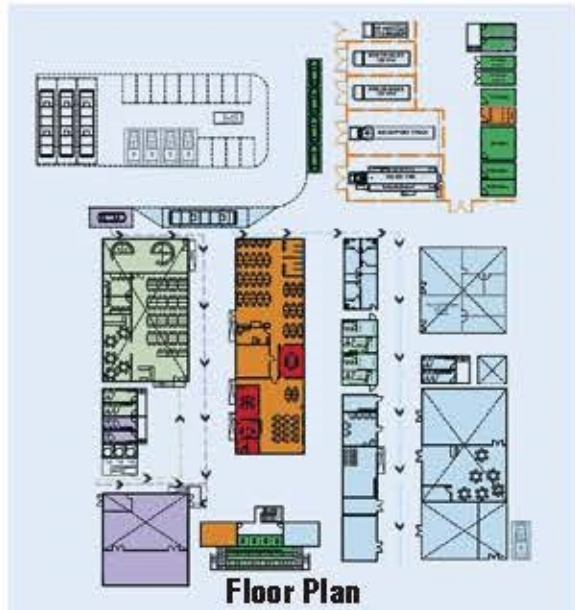
3D Design







Location: Baku, Azerbaijan  
 Application: Games Venues Cabins & Toilets  
 Project Profile: 2438mm\*5800mm\*68 units + 2000mm\*4000mm\*1 unit  
 + 1500\*5800\*10 units + 2900mm\*5800mm\*4 units total



Location: Hawaii, America  
 Application: Residence  
 Project Profile: 6058mm\*2438mm\*3 units total with roof system







Location: Dubai, United Arab Emirates  
 Application: Office  
 Project Profile: 2000m<sup>2</sup> area



Location: Kandahar, Afghanistan  
 Application: Military Camp  
 Project Profile: 6058mm\*2438mm\*220 units + 4888mm\*2438mm\*40 units + 7338mm\*2438mm\*10 units total with roof system





# MODIFIED CONTAINER



Modified container is a custom product based on the ISO shipping container. Openings can be made on the containers to install doors and Windows according to the requirements. All the work can be completed in the factory including insulation and decoration, even installation for furniture and sanitary fittings. After protecting the openings, the modified container can be transported as a ISO shipping container. It can be put into use after little work when arriving at the destination. The modified containers can used separately as accommodation, office, or bathroom, and also can combine or stack them as needed.



## Advantages



### Sturdy And Durable

Modified containers can be stacked maximum 7 floors, also they can last more than 30 years.



### Customized Design

Modified containers can be customized designed in special dimension, layout and materials, to meet different standard and requirement.



### Fully Equipped

Modified containers can be equipped with pre-installed internal fittings, such as furniture and sanitary fittings, this makes the setup easy and saves labor on site.

## Dimensions



Type	External Dimensions(mm)			Internal Dimensions(mm)			Weight(kg)
	Length	Width	Height	Length	Width	Height	
20*8' Modified Unit	6058	2438	2896	5878	2258	2700	4000
20*10' Modified Unit	6058	3000	2896	5878	2820	2700	4500
20*12' Modified Unit	6058	3658	2896	5878	3478	2700	5000
40*8' Modified Unit	12192	2438	2896	12012	2258	2700	7200
40*10' Modified Unit	12192	3000	2896	12012	2820	2700	8000
40*12' Modified Unit	12192	3658	2896	12012	3478	2700	8800

\*Also available with external height 2591mm(8'6"), maximum length 18000mm and maximum width 4200mm for customization.



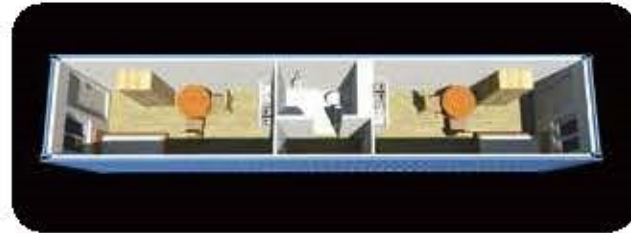
## 20ft/40ft Modified Container Model



8 x 20ft Starter unit Model:MC-2001



8 x 40ft Starter unit Model:MC-4001



8 x 40ft Bachelor unit Model:MC-4002



8 x 40ft Manager unit Model:MC-4003



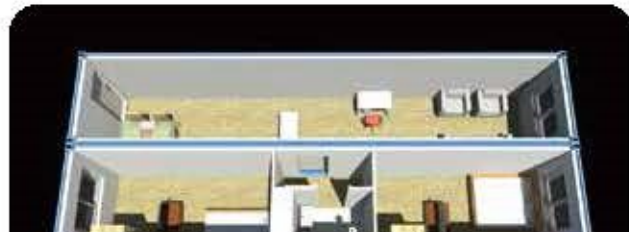
8 x 40ft Business unit-1 Model:MC-4004



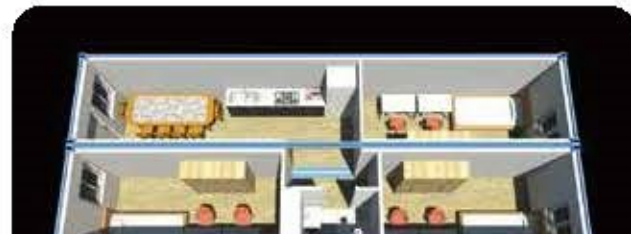
8 x 40ft Professor unit Model:MC-4005



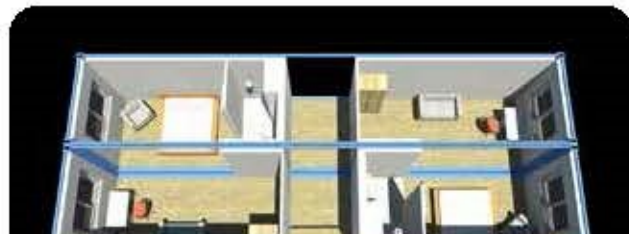
8 x 40ft Junior unit Model:MC-4006



2 x 8 x 40ft Master unit-1 Model:MC-4007



2 x 8 x 40ft Master unit-2 Model:MC-4008

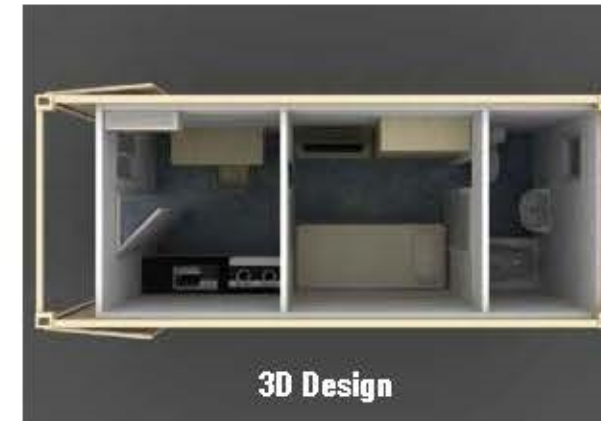
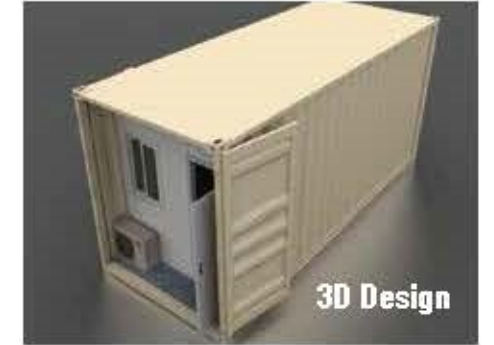
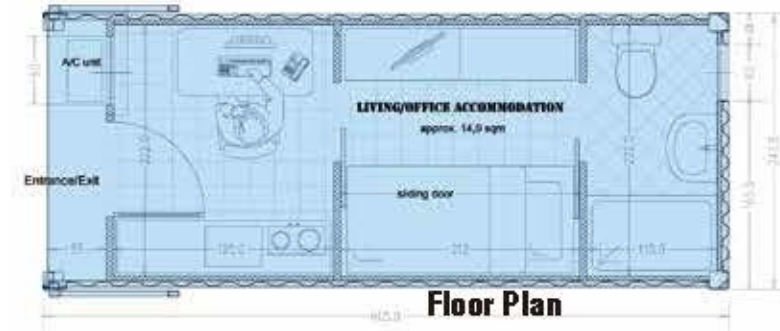


2 x 8 x 40ft Queen unit Model:MC-4009

## Project & Layout



United Nations Project  
Application: Accommodation  
Project Profile: 6058mm\*2438mm\*30 units total







Location: Australia  
 Application: Residence  
 Project Profile: 2 floor building, 12192mm\*3657mm\*4 units total



3D Design



Location: Australia  
 Application: Accommodation  
 Project Profile: 12192mm\*3400mm\*4 units+6058mm\*3400mm\*1 unit total



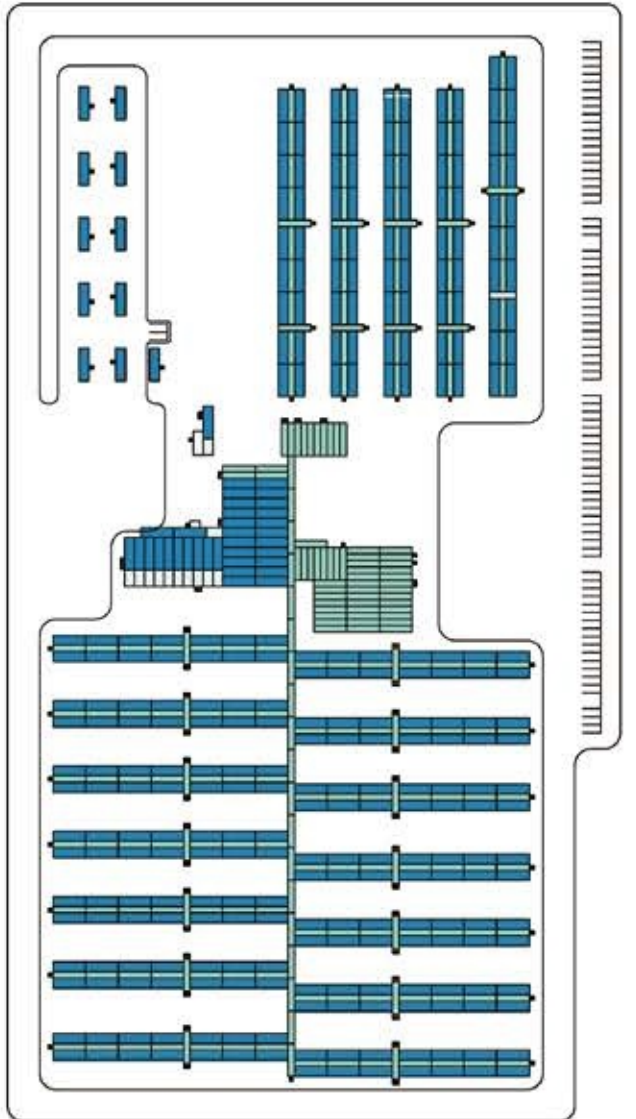




Location: Canada  
 Application: Accommodation  
 Project Profile: 18288mm\*3657mm unit

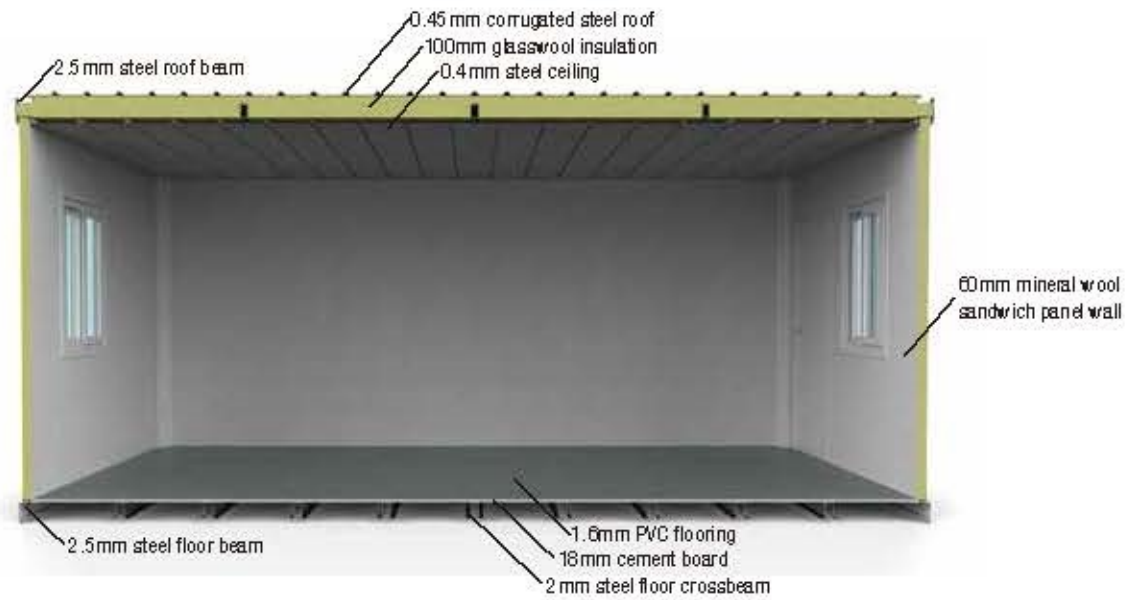


Location: Northern Ontario, Canada  
 Application: Workers Camp  
 Project Profile: 591 units, 21 300 sq. m. total, designed to tolerate -40°C

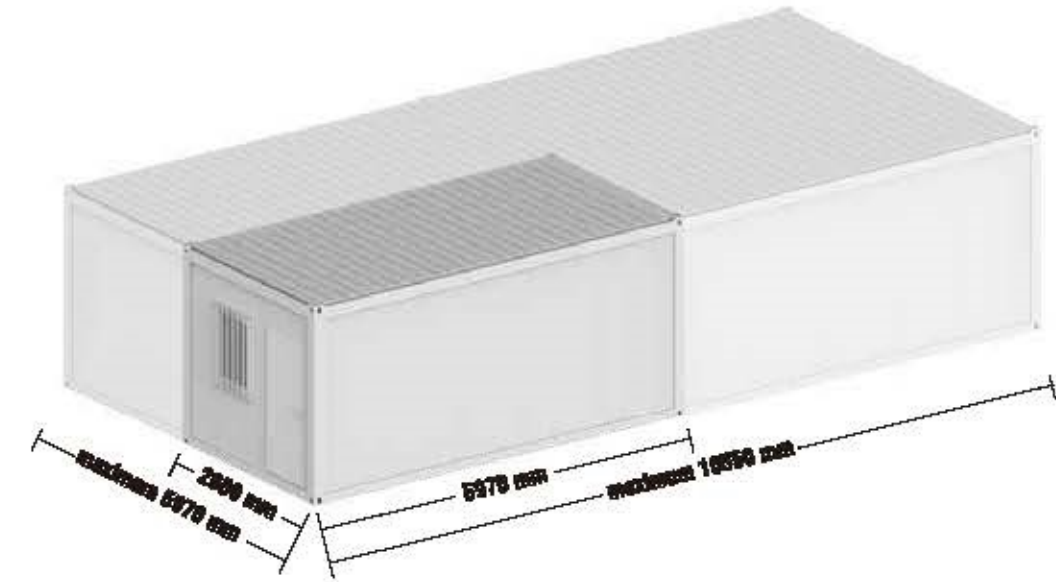




# SITE BOLTED MODULAR



Our new product, site bolted modular is designed on the basis of flat pack container. All the parts of site bolted modular are transported separately and will be assembled on site. We use the same beams of flat pack container for the site bolted modular to make sure it is strong enough.



## Easy Installation

The site bolted modular is combined with several parts. All of them are connected with bolts. No welding and drilling is required during the frame assembly. 2 skilled worker can complete 1 modular in 3 hours.



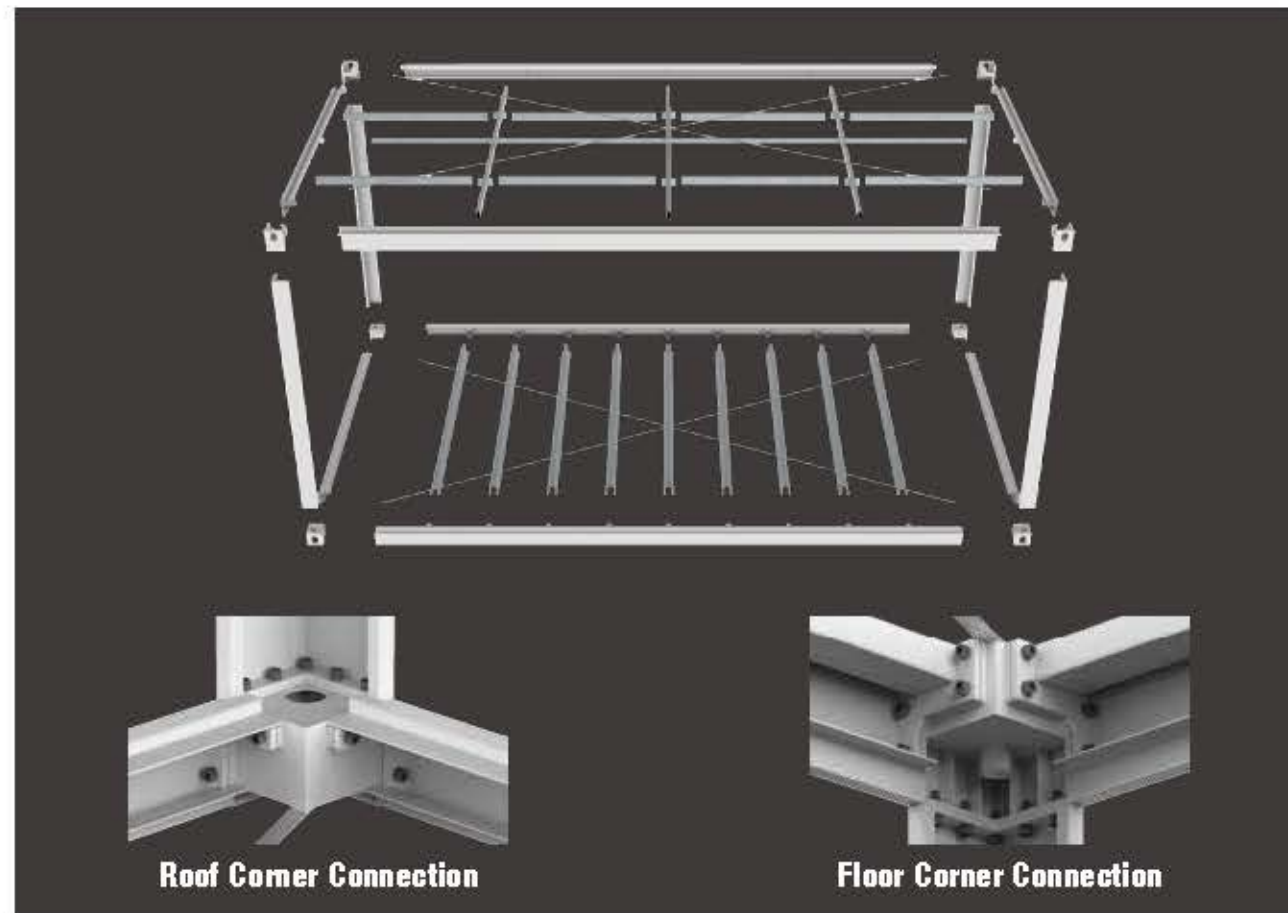
## Flexible Dimension

Since the site bolted modular can be split into components during the transportation, there is no limit on the dimension. The maximum dimension of the site bolted modular can reach 6m width and 11m length. While the flat pack container can only be 2.4m width when be loaded in 40HC.



## Economical Transportation

The site bolted modular can be split into parts to load into the shipping container, which saves more space. One 40HC shipping container can load 12 units of 3x6m site bolted moduls and One 20GP shipping container can load 6 units of 3x6m site bolted moduls, twice the quantity of the flatpack containers. That means a large saving in freight.



×6



20GP × 1



×12



40HC × 1



# SMART HOME



Smart home is a new generation of building systems from Star House. It's a completely customized product, both in the design and materials. The frame of the smart home is steel structure and the wall system is light steel. It looks as same as an ordinary residence. But it's more environmentally friendly and economical. All the materials are provided by the factory and only need to be assembled on site.



**Assembly**



**Wall System**



**Customized layout**



**Interior Decoration**

# ISO SHIPPING CONTAINER



Star House has a production line for ISO shipping container. Our main products include 20'GP, 20'HC, 40'GP, 40'HC ISO shipping containers. In addition, we can also customize special containers which maximum external dimensions is 4200mm (Width) x 18000mm (Length) x 2896mm (Height). We have 100-120 units max output per day, which can ensure the delivery in time for mass production.



**40'HC**



**20'HC**



**40'GP**



**20'GP**

Now you can also order the ISO shipping containers on our website ([www.star-house.com.cn](http://www.star-house.com.cn)). All you need to do is just clicking the mouse, browsing our website, selecting the size, color and quantity of the containers you want, and leaving contact information. Then we will contact with you to confirm the order. After the containers completed, we will delivery to you at once.

