

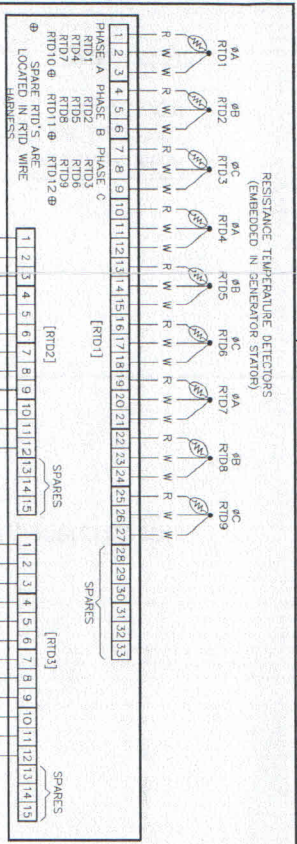
1/8" THICK NEOPRENE GASKET  
7 GA 11.63 X 51.00 SSTL  
GLAND COVER

1/8" THICK NEOPRENE GASKET  
7 GA SSTL TERMINAL  
BOX COVER

Certified for  
Solar Turbines  
Project: CVX-Uko  
PDI: 3H511  
PDI: HBJU00931  
Date: 22 Sep 2011

- NOTES:
1. SEE DIMENSIONAL DRAWING FOR LOCATION OF OUTLET BOX ON GENERATOR
  2. ALL TERMINAL BOXES ARE 316 SSTL, NOT PAINTED.
  3. THESE TERMINAL BOXES, AS INSTALLED ON THE GENERATOR, ARE SUITABLE FOR HAZARDOUS LOCATION AS DEFINED BY CSA STANDARDS FOR CLASS 1 DIV 2, GROUP C & D, T3

90813	Change customer terminal to accommodate order lugs	DL	8-9-11
THE INFORMATION HEREON IS THE PROPERTY OF KATO ENGINEERING. NO PART HEREOF IS TO BE REPRODUCED, TRANSMITTED, OR DISCLOSED IN ANY MANNER WITHOUT THE WRITTEN PERMISSION OF KATO ENGINEERING.			
INCHES	MATL	TITLE	LEAD TERMINATION
1/16	316	11-4-10 24405	
DRAWING NUMBER		SH 1 OF 1	
107-90840-00			

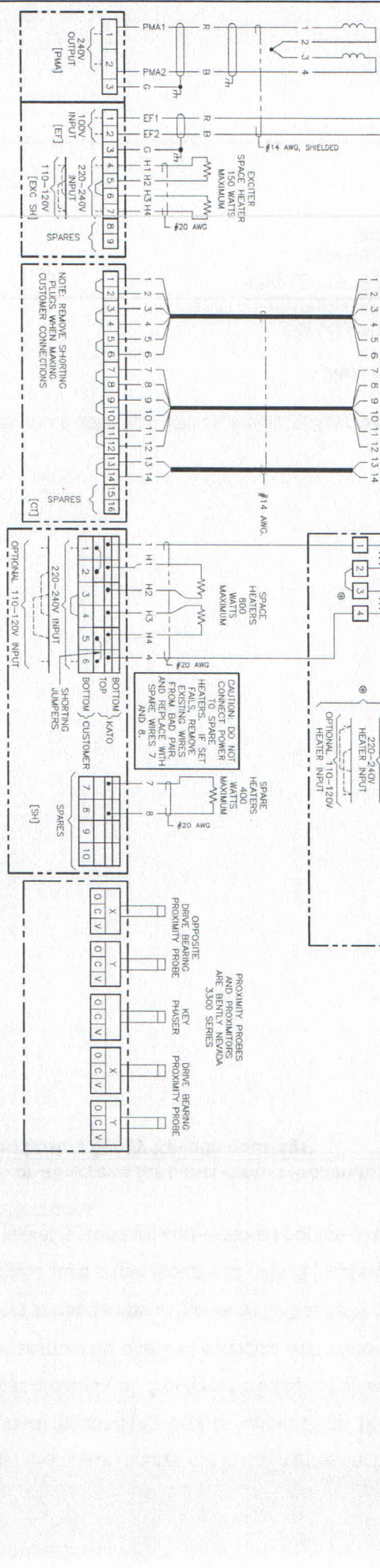
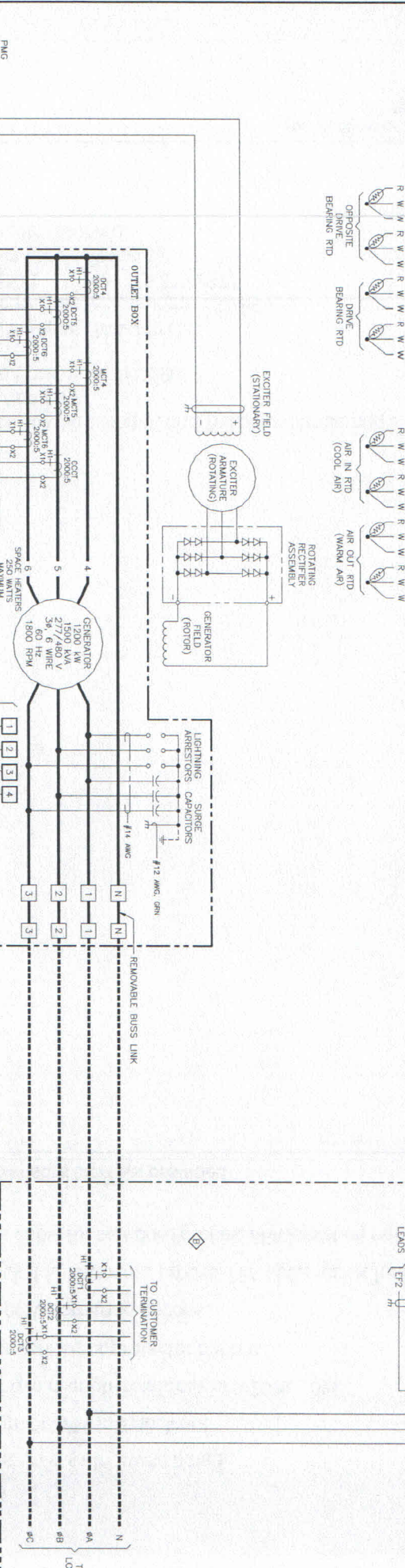
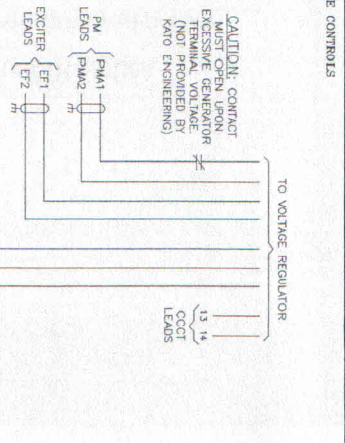


**ENCLOSURES WITH THIS LINE**  
 DCT - PARALLELING CURRENT TRANSFORMER  
 DCT - DIFFERENTIAL CURRENT TRANSFORMER  
 WCT - METERS CURRENT TRANSFORMER  
 OTHERWISE - NOTE.

**LEGEND**  
 COCT - PARALLELING CURRENT TRANSFORMER  
 DCT - DIFFERENTIAL CURRENT TRANSFORMER  
 WCT - METERS CURRENT TRANSFORMER

**NOTES:**  
 1. ALL CT'S ARE INSTRUMENT TRANSFORMER INC. MODEL #180. (FOR CT RATING, REFER TO INDIVIDUAL CT)  
 2. ALL SPACE HEATERS ARE LOW TEMPERATURE (< 200°C) MINIMUM  
 3. ALL RTD WIRING #22 AWG

**NOTE: KATO ENGINEERING RECOMMENDS**  
 SUPPLEMENTARY SHIELDING FOR SHIELD ON ALL SHIELDED WIRING.  
 [ ] - TERMINAL LABEL



TYPE	RESISTANCE	TEMPERATURE
PLAIN	100 OHMS	TEMPERATURE
RED - WHITE	TEMPERATURE COMPENSATION	TEMPERATURE
WHITE - WHITE	LEAD RESISTANCE	TEMPERATURE

CONDITION	PRE-ALARM	SHUTDOWN
STATOR	159.18 OHMS @ 155°C	112.90 OHMS @ 65°C
BEARINGS	134.70 OHMS @ 95°C	136.60 OHMS @ 95°C
AR IN (COOL)	117.47 OHMS @ 45°C	119.40 OHMS @ 55°C
AR OUT (WARM)	125.16 OHMS @ 65°C	127.07 OHMS @ 70°C

Certified for Solar Turbines Project CVX-VK9  
 PD: 37511  
 PDI: HBJ000931  
 S/N: 24405  
 Date: 22 Nov 2011

Remove NERV/CCT from connection drawing: TEW 11-18-11

THE INFORMATION HEREON IS THE PROPERTY OF KATO ENGINEERING. WITHOUT WRITTEN PERMISSION, ANY COPYING, TRANSMISSION, OR REPRODUCTION IN ANY FORM OR BY ANY MEANS IS PROHIBITED. AND ANY USE EXCEPT THAT FOR WHICH IT IS LOANED IS PROHIBITED.

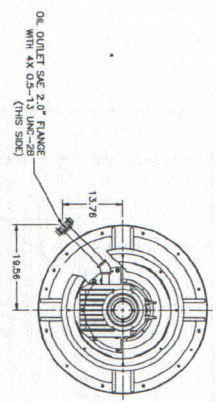
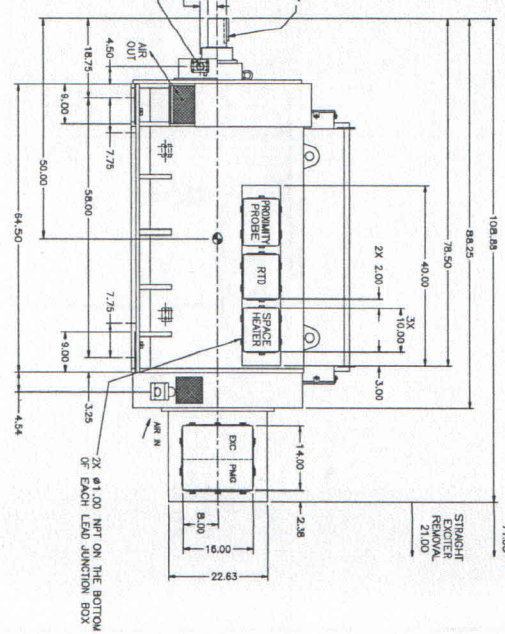
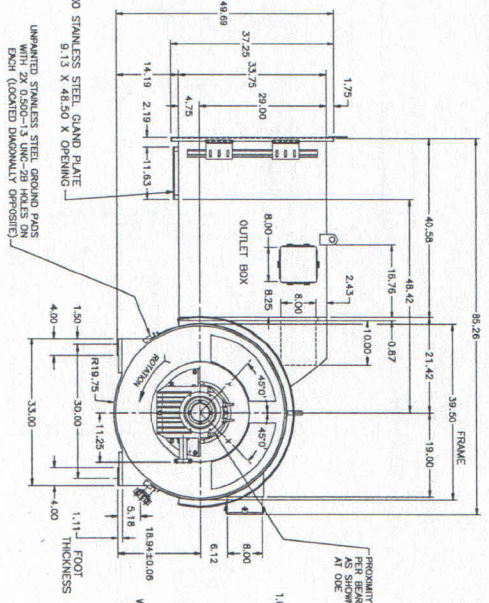
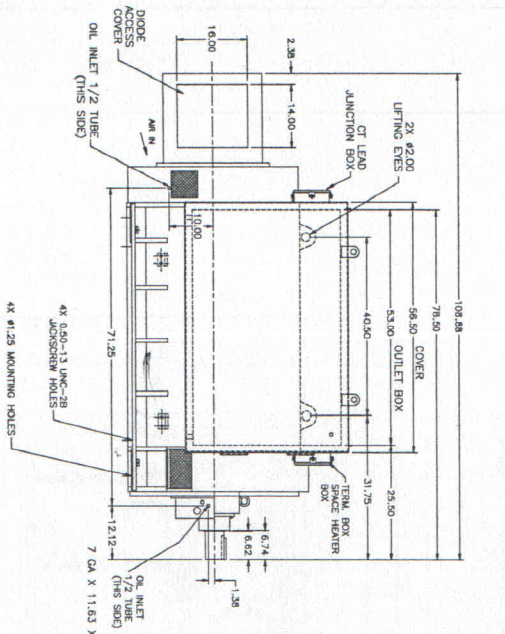
TEW 10-28-10 24405  
 DATE: 10-28-10 24405

DRAWING NUMBER: SH 1 OF 1  
 KATO Engineering Inc.  
 38-00244-05

- NOTES:
1. ALL TERMINAL BOXES, COVERS AND SCREENS ARE 316 STAINLESS STEEL AND NOT PAINTED.
  2. ALL FASTENERS  $\frac{3}{8}$ " AND SMALLER OF 316 STAINLESS STEEL.
  3. THE TOLERANCE OF THE OIL INLET/OUTLET POSITION IS 1 INCH.
  4. BOTH BEARINGS REQUIRE EXTERNAL LUBRICATION.
  5. APPROX. WEIGHTS:
  6. THIS GENERATOR IS SUITABLE FOR OPERATION IN CLASS 1, GROUP B, C, AND D, 13 BY CSA.

TOTAL UNIT WEIGHT: 12,000 LB

SHIPPING DIMENSIONS: 65.28 X 108.88 X 49.19



31198	UPON THE ABOVE LISTED	40	9-7-11
THE INFORMATION CONTAINED IN THIS DRAWING IS THE PROPERTY OF KATO INCORPORATED. IT IS TO BE KEPT CONFIDENTIAL AND NOT TO BE REPRODUCED OR TRANSMITTED IN ANY FORM OR BY ANY MEANS, ELECTRONIC OR MECHANICAL, INCLUDING PHOTOCOPYING, RECORDING, OR BY ANY INFORMATION STORAGE AND RETRIEVAL SYSTEM.			
INCHES	7/16	25	11-11-13 24X03
TITLE	SYNCHRONOUS GENERATOR MAIN DIMENSIONAL		
DRAWING NUMBER	102-69928-01		