



**EXPANDABLE  
CONTAINER HOUSE**

**CONTAINER HOUSE  
STEEL STRUCTURE  
PREFAB LABOR CAMP**

# factory



# FOLDING CONTAINER HOUSE (CAMP)

**2021 NEWEST DESIGN**  
**FOLDING CONTAINER HOUSE**  
4 MINUTES = 4 STEPS = 1 HOUSE

12 units can be loaded into 1X40HQ

100% Fireproof

100% Waterproof

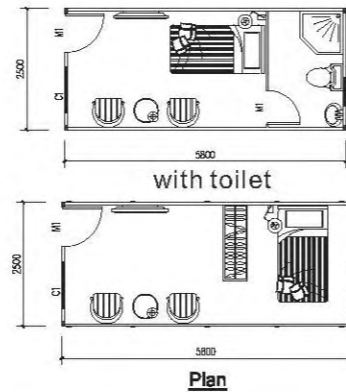
100% Folding

**Germany, USA, Japan, Australia Standard**

Size: 2.5M X 5.8M X 2.6H

## Features:

1. 4 minutes can install 1 house.
2. **Galvanized** steel structure.
3. 40mm fireproof IEPS sandwich panel for wall & 100mm glass wool for roof.
4. Aluminum sliding windows with security bar.
5. Fireproof IEPS sandwich panel door.
6. 18mm MGO board for floor.
7. When is folded, the height is only 350mm.
8. Include electrical.



## REFUGEES HOUSING

*Fast Build*



## Projects:



# FOLDABLE CONTAINER HOUSE PLUS

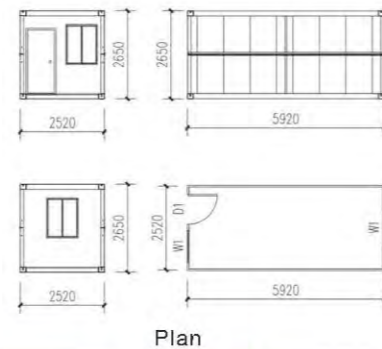
(This luxury foldable container house is widely used for labor camp, office, dormitory & store room.  
Loading: 1x40HQ can load 10 units.)



Size: 2.52M x 5.92M x 2.65H

## Features:

1. FASTER UNLOADING!
2. 100% water proof roof~!
3. 50mm Sandwich panel for wall; 100mm glass wool insulation for roof!
4. PVC double glass sliding windows.
5. Steel door with high quality handle lock.
6. 18mm MGO board for floor.
7. Including basic room electrics.



# SHIPPING CONTAINER HOUSE

(This shipping container house is popular used for villa resort, hotel, office, accommodations & shops.)



Size: 2.438M x 6.058M x 2.896H

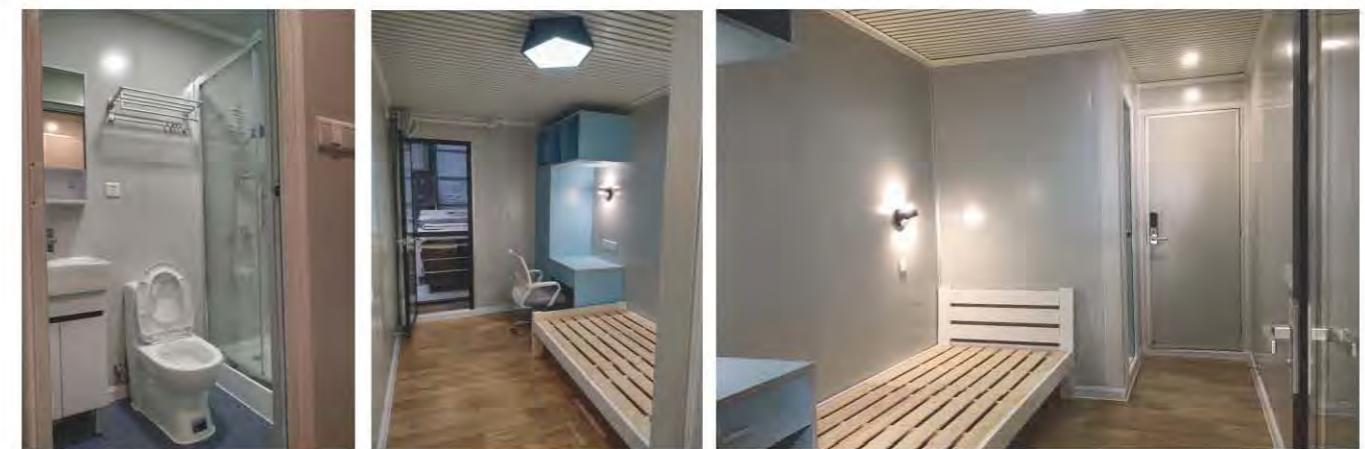
## Features:

1. Structure: 20' HQ Shipping Container.
2. Flooring: 28mm Plywood + 3mm PVC Vinyl / WPC panel.
3. Ceiling: Corrugated steel sheet + 50mm AEPS sandwich panel + WPC ceiling.
4. Wall: Corrugated steel sheet + 50mm AEPS/IEPS sandwich panel.
5. Door: AEPS sandwich panel doors (With Smart card) + Glass doors.
6. Balustrade: Square tube + Glass.



Container apartment

## Inside:



Toilet

Bedroom

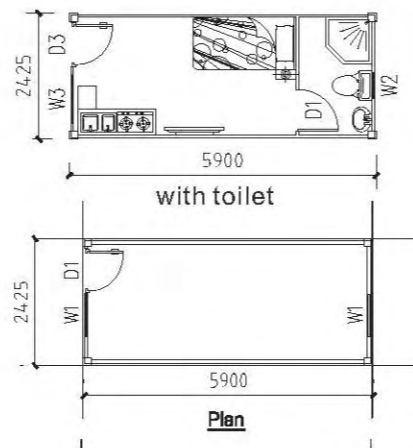
# FLAT PACK CONTAINER HOUSE

(This flat pack container house is popular used for office, dormitory & shop.  
Loading: 1x40HQ can load 9 sets.)



## Features:

1. Come with completed roof & floor.
2. Electric wires run over ceiling, including DB, breaker, power inlet & sockets.
3. Fully Galvanized Steel Structure.
4. 50MM EPS/Glass wool sandwich panel for wall & 100mm glass wool for roof.
5. Steel door & UPVC double glass windows with security bar.
6. Steel sheet modern indoor lining.



## Installation:



## — Typical Projects —

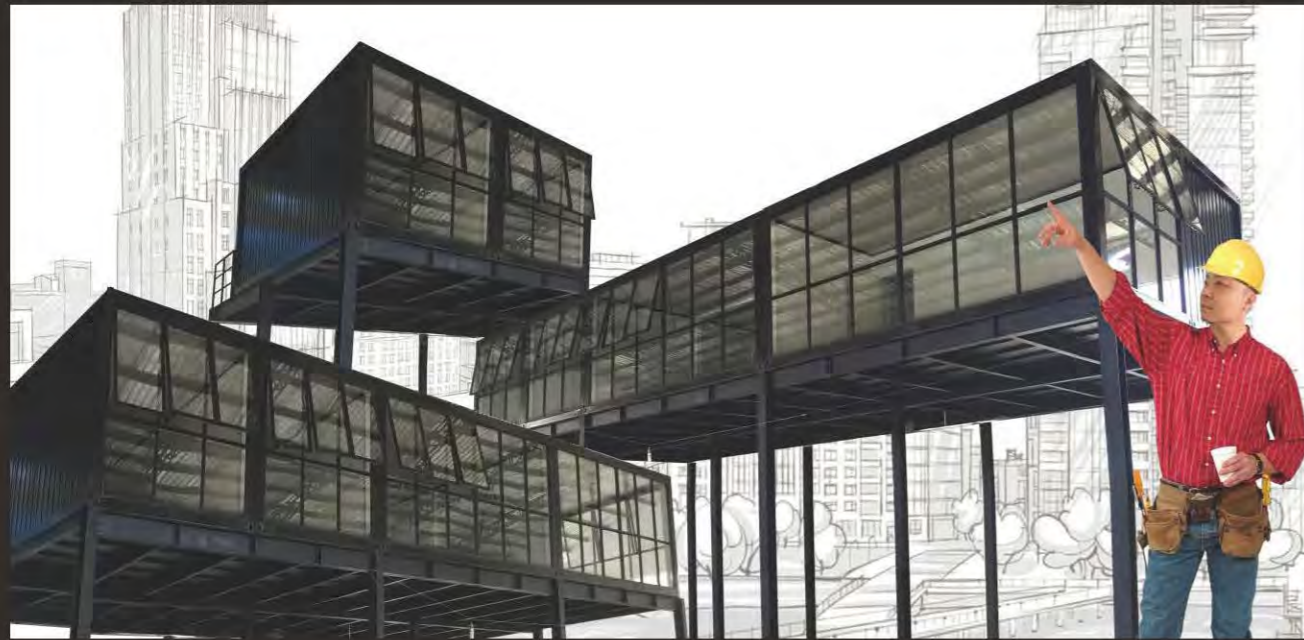


- Container villa
- Container dormitory
- Container office
- Container hotel



# DETACHABLE CONTAINER HOUSE

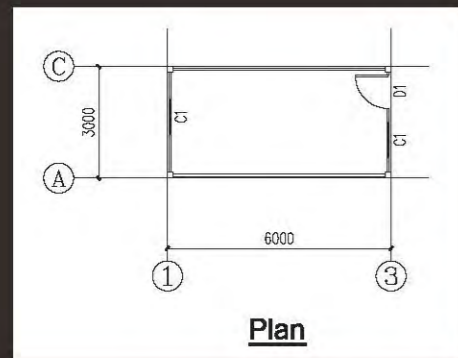
(This container house is widely used for office, apartment & shop.  
Loading: 1x40HQ can load 15 units.)



## Features:

1. Galvanized steel structure.
2. 50mm fireproof EPS/Glass wool sandwich panel for wall.
3. 0.476mm steel sheet+50mm glass wool+ steel sheet ceiling for roof.
3. Double glass aluminum sliding windows.
4. Steel door.
5. 18mm MGO board for floor.
6. Optional design. Outside with corrugated shape&inside with wooden coating.

- 1. Separate steel structure.
- 2. Can load in 20ft container.
- 3. Customized size.
- 4. No need crane to install.



3MX6MX2.8H



## Projects:



# EXPANDABLE CONTAINER HOUSE

(This expandable container house is widely used in Emergency Function, Disaster Relief, Remote Site Deployment, Field Clinic, Site Offices etc.)



**6 People install 1 house within 1 hours**

## Features:

1. Floor: Steel structure + Bamboo Composite Board + PVC tile flooring;
2. 50mm EPS sandwich panel (Optional 50mm Glass wool sandwich panel)
3. Roof: 100mm glass wool insulation(Main body) + 50mm EPS sandwich panel(Extension)
4. Window: Aluminum Up-swing window(Optional UPVC double glass sliding window)
5. Door: Glass sliding door + Sandwich panel doors.



**20FT** expandable container



## Plans:

*5 steps 1 hours a home*



### Type A



Opening Size: 5.8MX4.8MX2.5H  
Closing Size: 5.8MX0.7MX2.5H  
**27.84m<sup>2</sup> (6 sets/40HQ)**

### Type B



Opening Size: 5.8MX5.2MX2.5H  
Closing Size: 5.8MX1.1MX2.5H  
**30.16m<sup>2</sup> (4 sets/40HQ)**



### Type C 36.54m<sup>2</sup> (2 sets/40HQ)



Opening Size: 5.8MX6.3MX2.5H  
Closing Size: 5.8MX2.2MX2.5H



### Type D 49.3m<sup>2</sup> (1 set/40HQ)

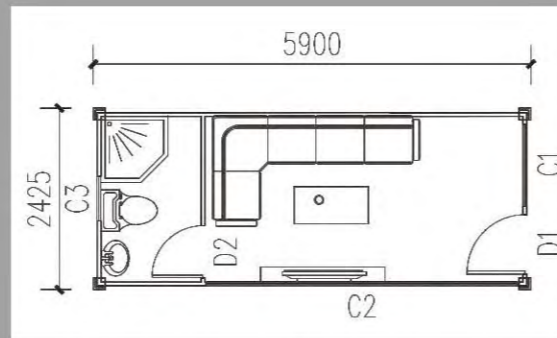


Opening Size: 5.8MX8.5MX2.5H  
Closing Size: 5.8MX4.4MX2.5H

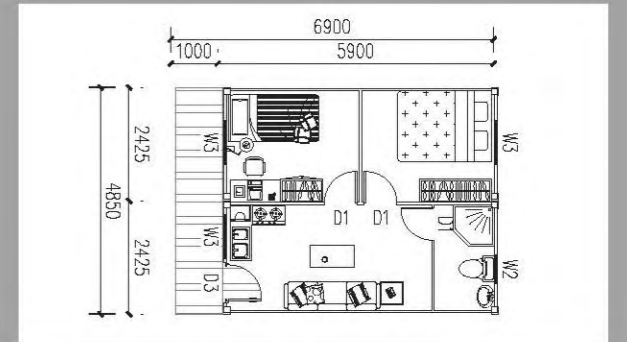




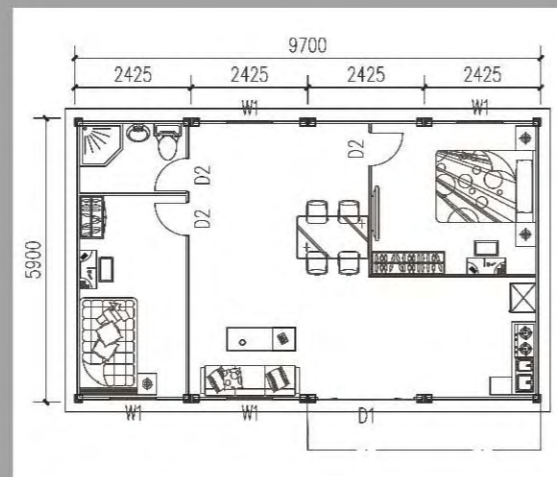
Living room, bedrooms, toilet, kitchen



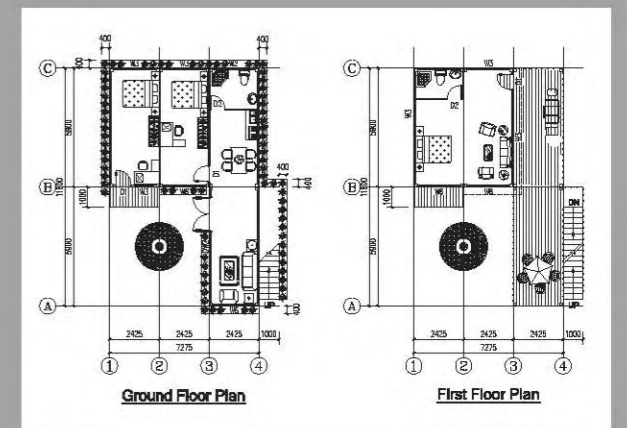
Type A: 2.425MX5.9MX2.8H



Type C: 4.85MX6.9MX2.8H



Type B: 5.9MX9.7MX2.8H



Type D: 7.275MX11.8MX5.6H



# CONTAINER HOME



6MX15MX2.8H (Three bedrooms)



6MX12MX2.8H ( Two bedrooms)

# CONTAINER Hotel

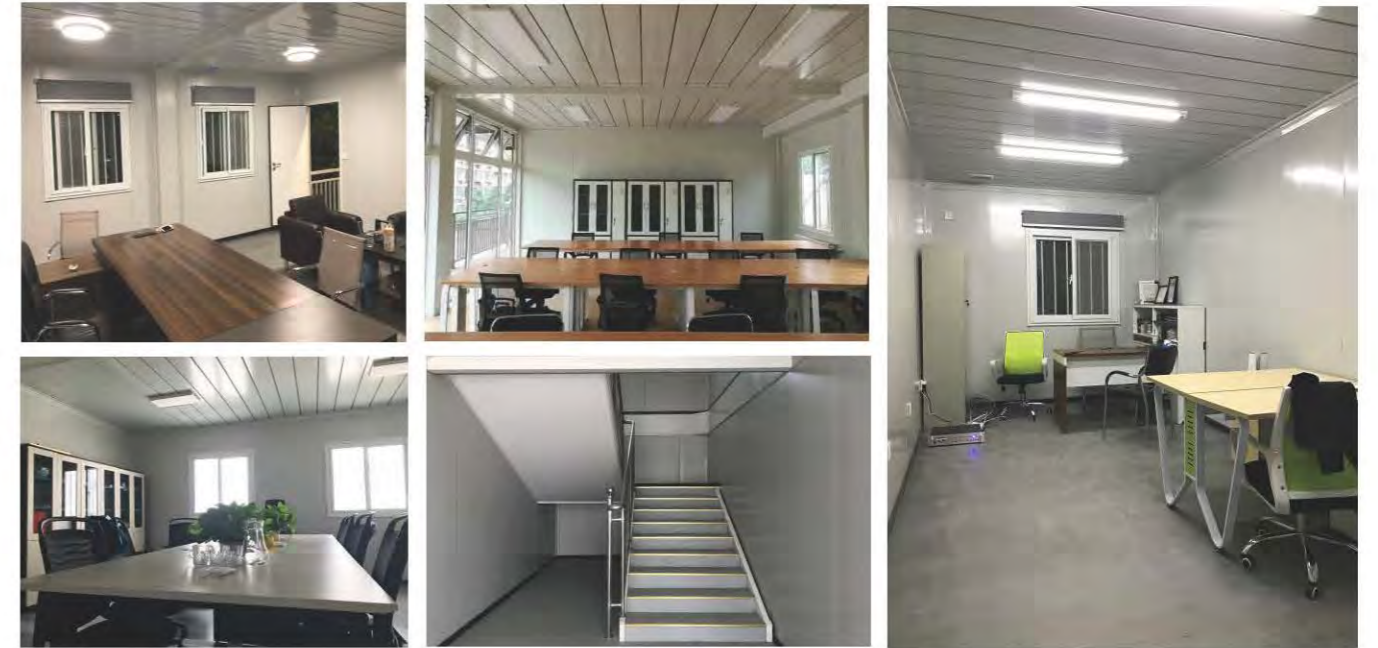
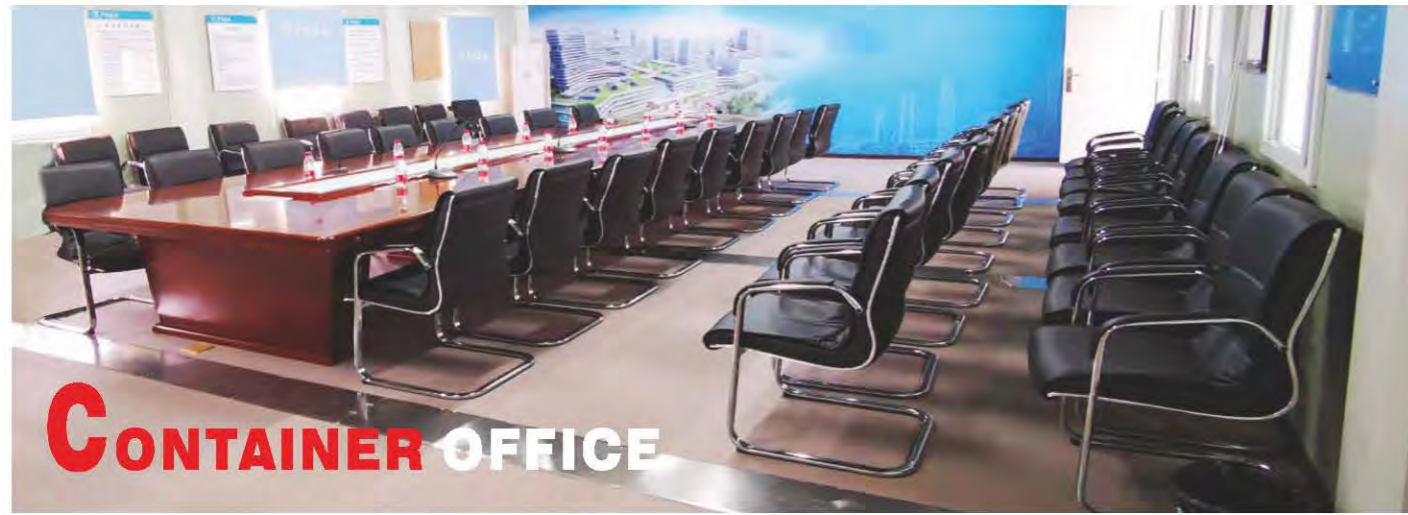
COMBINED BY FLAT PACK CONTAINER HOUSE



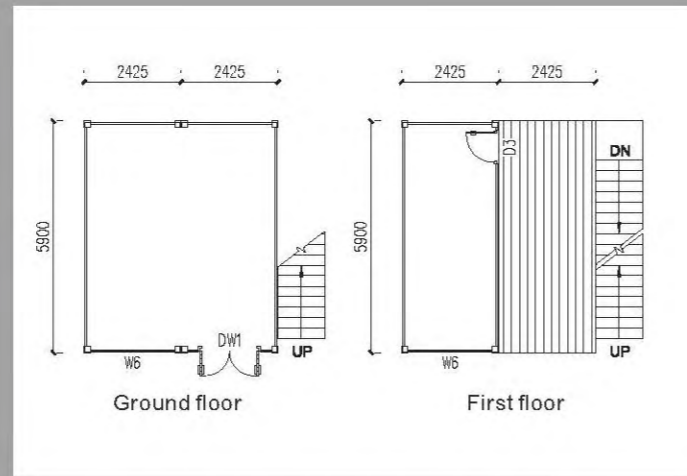
1. Office design: Inside have office, manager room, meeting room, public toilet etc.

2. Accommodation design: Inside have reception room, bedrooms, canteen, public toilet, gym ect

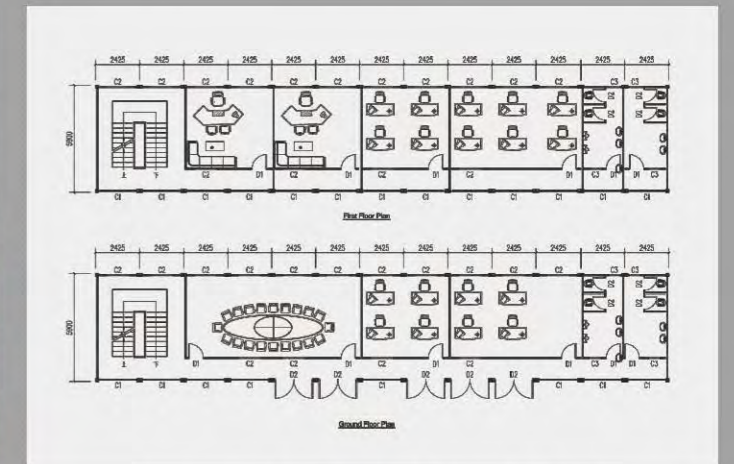




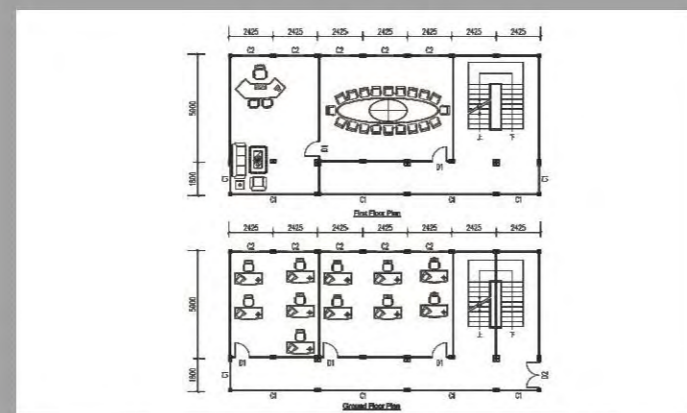
Manager room,office,reception room, meeting room,toilet



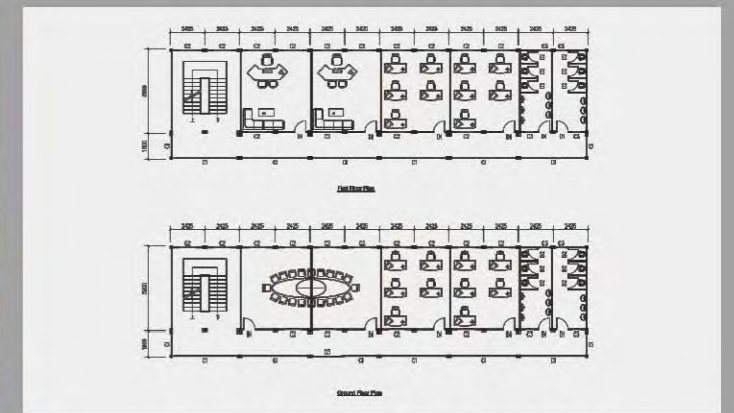
Type A: 4.85MX5.9MX5.6H



Type C: 31.525MX5.9MX5.6H



Type B: 7.7MX16.975MX5.6H



Type D: 29.1MX7.7MX5.6H

# CONTAINER MALL & CONTAINER SHOP



Made by flat pack container houses



**Type A**  
Two floor coffee shop 46.5m<sup>2</sup>  
Group floor: expandable design  
First floor: with balcony

**Type B ★★★★★**  
One floor store 14.5m<sup>2</sup>  
Economic shop

**Type C ★★★★★**  
One floor store 14.5m<sup>2</sup>  
Economic shop



**Type D ★★★★★**  
One floor kitchen shop 14.5m<sup>2</sup>  
Extended awning 14.5m<sup>2</sup>  
Total 29m<sup>2</sup>

**Type E**  
Expandable container shop  
Inside 12.5m<sup>2</sup>  
Total 32 m<sup>2</sup>

**Type F ★★★★★**  
One floor shop 7m<sup>2</sup>  
Extended awning 7m<sup>2</sup>  
Total 14.31m<sup>2</sup>



# C ONTAINER SCHOOL



Classroom

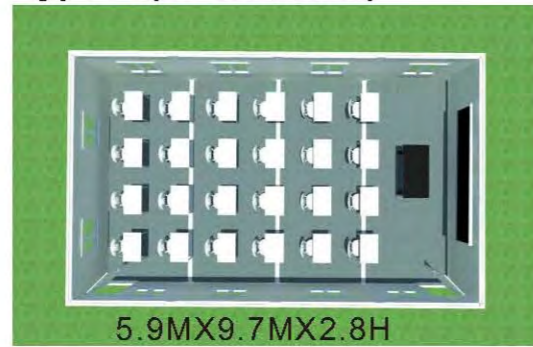


Accommodation



Classroom

Type A (24 students)

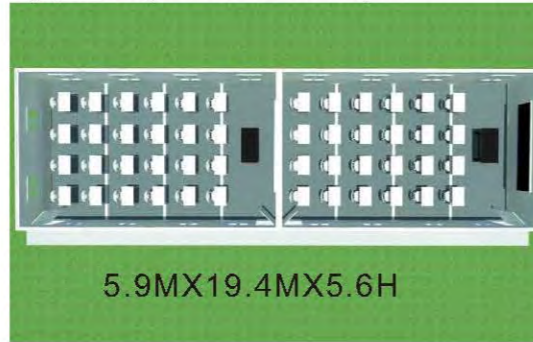


5.9MX9.7MX2.8H



Classroom

Type B (96 students)



5.9MX19.4MX5.6H

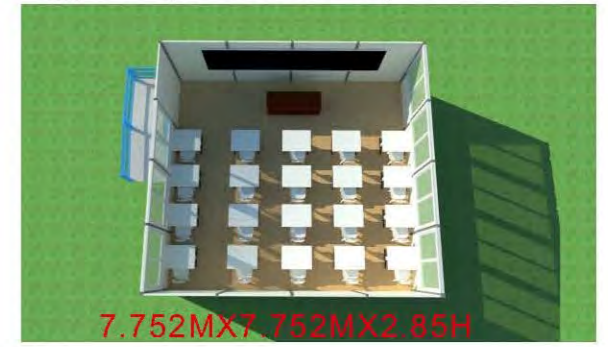
# P REFAB K CLASSROOM



Office



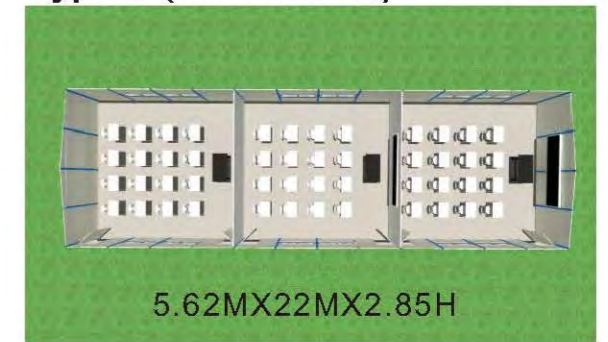
Type C (20 students)



7.752MX7.752MX2.85H



Type D (60 students)



5.62MX22MX2.85H



Accommodations



Meeting room



Toilet



Canteen

# PREFAB LABOR CAMP( K HOUSE)

(This K prefabricated house is widely used in construction sites and labor camp for dormitory, canteen, clinic and laundry room.)



3KX12KX3P Canteen

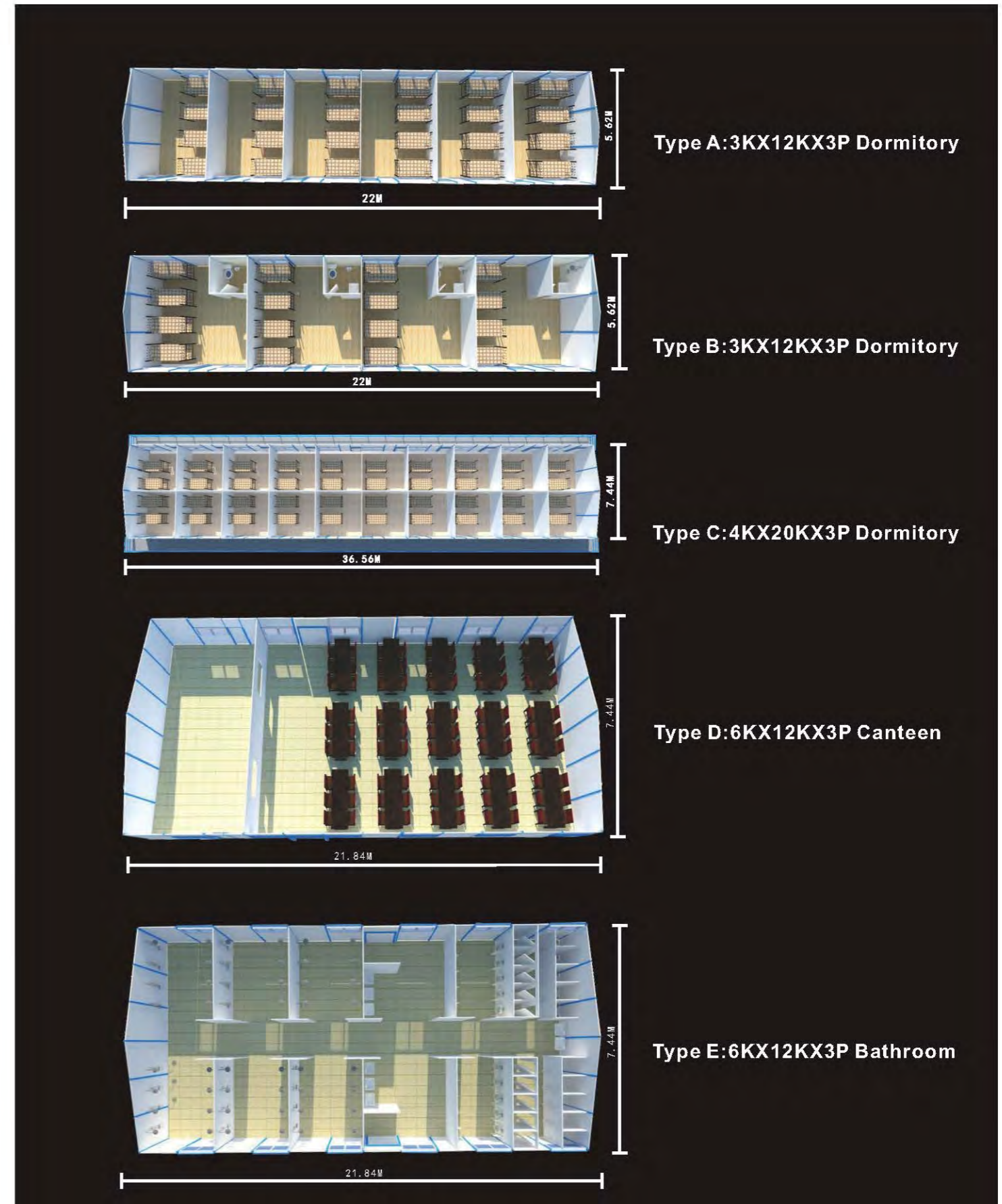


7KX20KX6P Dormitory



## Features:

- 1."C" section steel for columns and beams.
- 2.50mm EPS/IEPS/Rock wool/ Glass wool/ PU sandwich panel for wall & roof.
- 3.Aluminum sliding windows and sandwich panel doors .
- 4.1x40HQ can load around 280-320 m2.



## The area comparing form of slope style house

K house:1K=1.82m,1 P=0.95m

Length	Width	ONE FLOOR (3P)			TWO FLOOR(6P)			THREE FLOOR(9P)		
		3K	4K	5K	3K	4K	5K	3K	4K	5K
4	K	45.53	59.07	72.61	103.79	130.87	157.95	176.04	216.66	257.28
5	K	56.67	73.52	90.38	126.97	160.68	194.39	211.27	261.83	312.39
6	K	67.81	87.98	108.14	150.16	190.49	230.82	246.51	307.01	367.50
7	K	78.95	102.43	125.90	173.35	220.30	267.26	281.74	352.18	422.61
8	K	90.09	116.88	143.67	196.53	250.11	303.69	316.98	397.35	477.72
9	K	101.22	131.33	161.43	219.72	279.93	340.13	352.21	442.52	532.83
10	K	112.36	145.78	179.19	242.91	309.74	376.57	387.45	487.70	587.94
11	K	123.50	160.23	196.96	266.09	339.55	413.00	422.68	532.87	643.05
12	K	134.64	174.68	214.72	289.28	369.36	449.44	457.92	578.04	698.16
13	K	145.78	189.13	232.48	312.47	399.17	485.88	493.16	623.21	753.27
14	K	156.92	203.58	250.25	335.65	428.98	522.31	528.39	668.38	808.38
15	K	168.06	218.03	268.01	358.84	458.79	558.75	563.63	713.56	863.49
16	K	179.19	232.48	285.77	382.03	488.61	595.19	598.86	758.73	918.60
17	K	190.33	246.93	303.54	405.21	518.42	631.62	634.10	803.90	973.71
18	K	201.47	261.38	321.30	428.40	548.23	668.06	669.33	849.07	1028.82
19	K	212.61	275.84	339.06	451.59	578.04	704.49	704.57	894.25	1083.93
20	K	223.75	290.29	356.83	474.77	607.85	740.93	739.80	939.42	1139.04
21	K	234.89	304.74	374.59	497.96	637.66	777.37	775.04	984.59	1194.15
22	K	246.02	319.19	392.35	521.15	667.48	813.80	810.27	1029.76	1249.26

### Explanation:

The two floor's house has two pcs stair in standard.Each side of gable wall has one.The stair's area is 4.5m<sup>2</sup>/pc.The three floor stair is 16m<sup>2</sup>/pc.The area will increase or reduce according the stair's quantity.

- The regular of area counting way:**
- 1.The house area:Exterior wall length×exterior wall width×floor number
  - 2.Standard stair:4.5m<sup>2</sup>/pc,corner stair(special for three floors house):16m<sup>2</sup>/pc.
  - 3.Awning area:house shadow area×0.5.
  4. Aisle board area:house shadow area.
  - 5.Total area=①+②+③+④
  - 6.Except the no standard house,this regular is suitable for all the house.
  - 7.Above regular also is fit for the flat style house.

### Features:



Steel structure



Wall panel



Roof panel

## K HOME

(Apartment design, have living room, bedroom, bathroom and outside kitchen.  
All the steel can be galvanized, the service time can more than 20 years.)



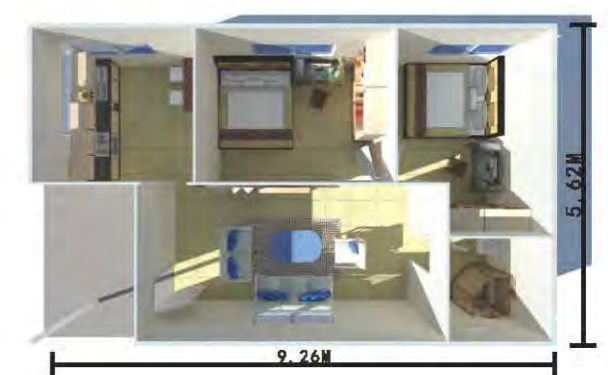
3K×4K×3P (total is 41.8 m<sup>2</sup>)



one bedroom



3K×5K×3P (total area is 52m<sup>2</sup>)



two bedrooms

### Features:

- 1.Steel structure.
- 2.50mm EPS/Glass wool sandwich panel for wall and roof.
- 3.Aluminum sliding windows and sandwich panel doors.
- 4.Easy to assemble and disassemble for several times.



# PREFAB LABOR CAMP ( T HOUSE )

(This T prefabricated house is widely used in construction sites and labor camp for dormitory, canteen, clinic and office.)



## Features:

1. Square tube steel for columns and beams.
2. 50mm EPS/IEPS/Rock wool/ PU sandwich panel for wall & roof.
3. Aluminum sliding windows and sandwich panel and steel doors .
4. Modern design. All the steel structures are hidden inside.



Simple home



Uganda Dormitory

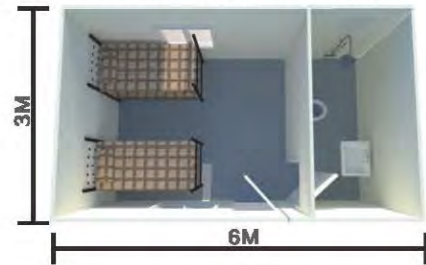


# SUDAN HOME

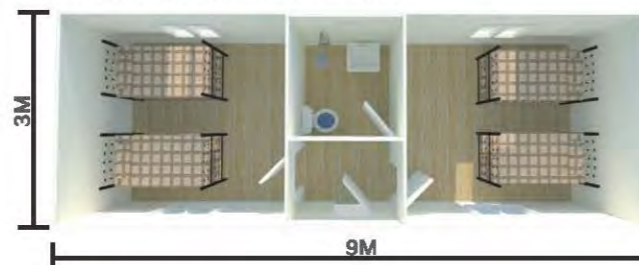
(With steel base and sandwich panel for wall and roof. This kind of house is widely used for refugee houses and labor camp house.)



**3M×6M×2.8H**  
one bedroom with toilet



**3M×9M×2.8H**  
two bedrooms with toilet



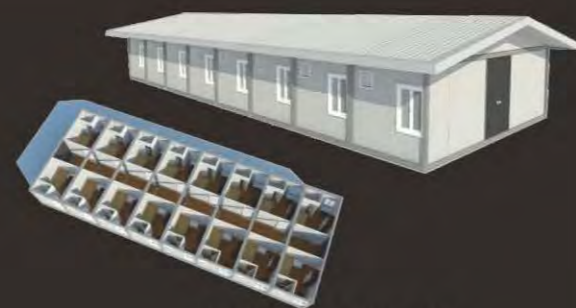
**3M×12M×2.8H**  
**3M×9M×2.8H**  
two bedrooms, living room, toilet

## 30FT Container house

Suitable for large-camp project



**2.425X9MX2.8H**  
**3MX9MX2.8H**



**9MX19.4MX2.8H**  
**9MX24MX2.8H**

# ACCESSORIES

## DOOR



Steel Sandwich panel Roller shutter

## KITCHEN CABINET



**HOT SALES**

## FLOOR



Ceramic Tile PVC Tile



Steel bunk bed Folding bed

## SANITARY WARE



Wash Basin Urinal Squat Toilet Sitting Toilet Shower Head Shower room

## ACCESSORIES



300 Aluminum 600 PVC Gypsum Lighting tile Ventilation ball Switch & Socket

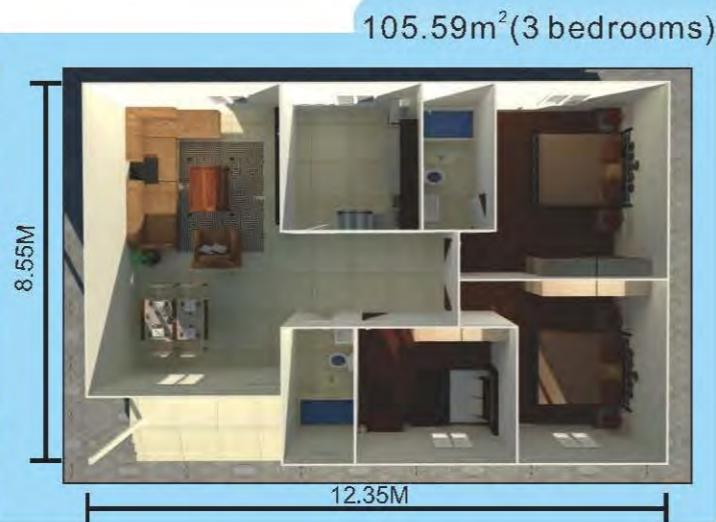


# LIGHT STEEL VILLA

(Steel structure, sandwich panel for wall and roof, steel doors and aluminum sliding windows.)



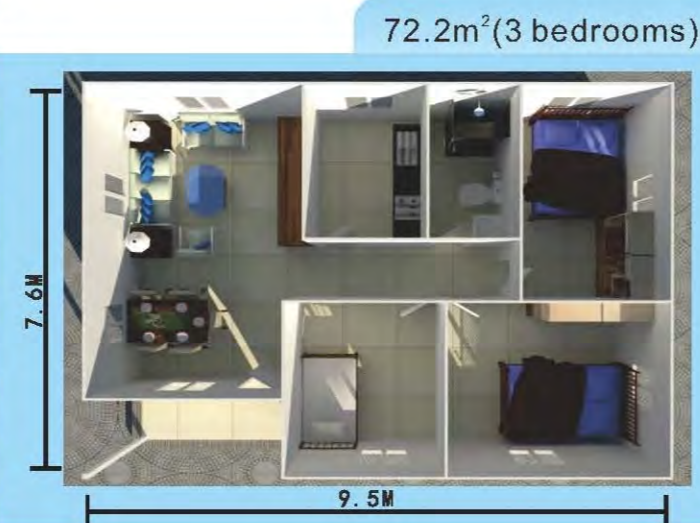
Sandwich panel villa(simple villa)



105.59m<sup>2</sup>(3 bedrooms)



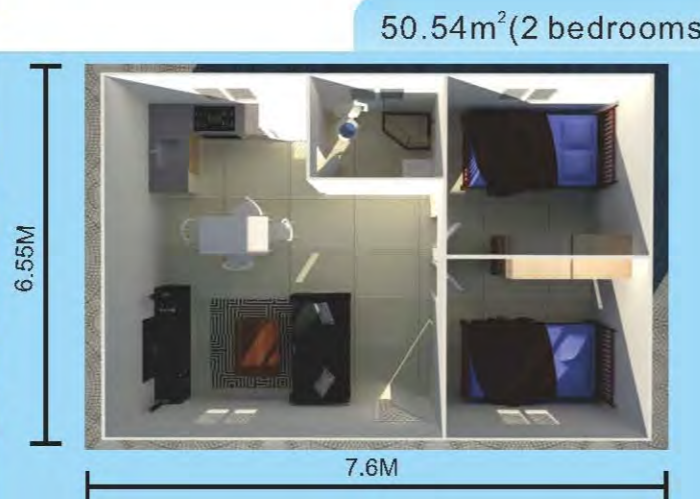
Sandwich panel villa(simple villa)



72.2m<sup>2</sup>(3 bedrooms)



Luxury concrete villa



50.54m<sup>2</sup>(2 bedrooms)

# PORTABLE TOILETS

(These portable toilets are widely used in playgrounds, parks, construction sites& labor camp.)



## Type A

1. Material: EPS panel; steel
2. Size: 1.15mX1.15mX2.3m
3. Fittings: Squat toilet bowl; washing basin; water tap; Ventilation fan; lock.
4. Weight: 125KGs.
5. Transportation: This model can be shipped disassembled or fully assembled.

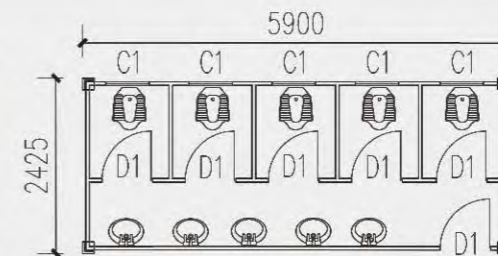


## Type B

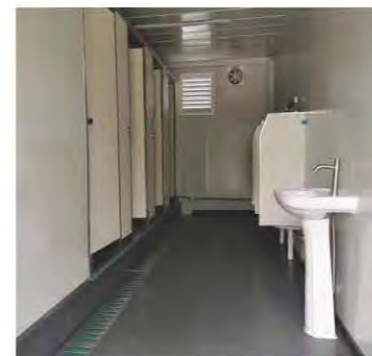
1. Material: Plastic; UV-proof.
2. Size: 1.15mX1.15mX2.3m
3. Accessories: Seated toilet bowl; waste tank; washing basin; water tap; ventilation pipe; foot pumps; mirror; in-use indicator; gender sign.
4. Weight: 115KGs.
5. Transportation: 20GP:30units/40HQ:65units.



## Type C



## Type D



Container toilet Inside



Sandwich panel toilet



HDPE toilet

# STEEL STRUCTURE



## Features:

1. "H" section steel for columns and beams.
2. 2.50mm EPS/IEPS/PU sandwich panel or 0.476mm single steel sheet for wall & roof.
3. Aluminum sliding windows and steel sliding door or roller shutter door.
4. With the lighting tiles, ventilation balls, galvanized gutters & water pipes.

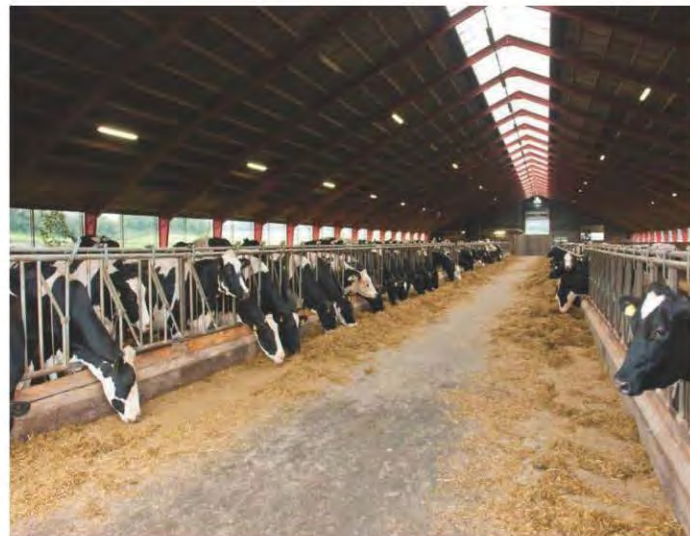


# STEEL SHEDS

(These steel sheds warehouse can use the single steel sheet or sandwich panel for roof and wall. Also can do the brick wall in local.)



Qatar warehouse house



cow shed



chicken shed

## Installation:



Steel structure



Foundation 1



Foundation 2



Brickwall & panel



# PROJECTS



Myanmar Project



Guangzhou Project



New Zealand Project



Sandwich Guard House



Stainless Guard House



Sandwich panel toilet



Costa Rica Project



Kuwait Project



Brazil Project



Argentina Project



Malaysia Project



Guadeloupe Project



Africa labor camp

# PROJECTS

(container houses, prefab houses, steel structures have already sold to 48 countries all over the world.)



Thailand Project



Mauritius labor camp



India labor camp



Qatar labor camp



Kuwait project



Oman labor camp



Yemen labor camp



Uganda labor camp



Saudi Warehouse



Syria refugee housing

prefab labor camp.