

1. Special Design 20 FT Container (Access Unit)



<u>Products</u>		<u>Items</u>	
<p>Special Design 20 ft Container</p> <ul style="list-style-type: none"> ➤ 20 Feet Container ➤ Design for; <ul style="list-style-type: none"> Access Unit (1 set) ➤ Technical room for AC, electric & electronic control panel, clean and waste water connections ➤ <u>Dimensions</u> <ul style="list-style-type: none"> 6058 mm (Length) 2438 mm (Width) 2590 mm (Height) Useful area without technical room 12.4 m² ➤ Three times epoxy primary coated (corrosion protected) 		<p>1 pc.</p>	

- High isolated special type sealant parts to protect the water and powder (locked type)
- Clean and Waste water tank connections
- 8 pcs. ISO corner Castings on each corner, for easy loading

Floor

- Heavy duty floor structure, reinforcement bars and inside equipment fixing points
- Isolated 50mm sandwich floor with plywood on the inside and fiber glass externally, 18 mm marine type plywood, 50 mm XPS isolation material
- All floor surfaces will be cover 2 mm Anti-bacterial, Anti-static, Anti-slip safe, washable hospital vinyl floor
- 7 cm oval skirting all around the inside floor corners (anti-bacterial surface)
- Easy to clean

Operation Panel (In the technical room)

- Easy usage option
- All electronic components are Brand of Schneider
- Phase control relay for protecting wrong connections
- Data communication connections
- External electric connection socket (IP67 Protection level) and 10-meter extension cable
- All body protected with copper grounding pod
- Fire resistant electrical cables
- All electrical and data cables are jointless

External Side Walls & Roof

- Sandwich panel with 50 mm isolation material, double sides electro static painted steel sheet

Internal Dividers & Installation

- Sandwich panel with 50 mm isolation material, double sides electro static painted steel sheet
- Stainless Steel Hinges (on foldable walls)

Doors (With Installation)

- Panel doors, lockable
- Embedded type curtains for windows and doors
- RAL 9016 white color
- UV glass (double glass)

Lighting

- Decorative Slim LED Lighting
- Long durability
- Energy saving
- Emergency Light option on each room

Split Type AC

- Split type AC units
- Copper Hose Installation with PVC cable trays
- Outdoor & Indoor Unit Installation with anti-vibration mounts
- Easily changeable filters

<ul style="list-style-type: none"> ➤ Remote controller ➤ A+ Inverter type ➤ Condensate drainage system ➤ Silent mode working <p>Alarm and Safety equipment</p> <ul style="list-style-type: none"> ➤ 2 pcs. x 2 kg Fire extinguisher ➤ Smoke detectors on each room 		
<p>Inside Equipment & Accessories</p> <ul style="list-style-type: none"> ➤ 3 pcs. working table with drawers, high quality ➤ Decorative ➤ 3 pcs. operator chair with armrest, wheels ➤ 3 pcs. waiting chair ➤ Cabinet for accessories and upper cabinet with door hinged ➤ Water dispenser, 1 pc. ➤ 3 pcs. laptop, min. i5 processor, Full HD ➤ 3 pcs. A4 laser printer, colored 	<p>1 set</p>	

2. Special Design Container (Laboratory & Pharmacy Unit)



20 FT Container Design for Laboratory & Pharmacy Unit

<u>Products</u>		<u>Items</u>	
<p>Special Design 20 FT Container</p> <ul style="list-style-type: none"> ➤ 20 Feet Container ➤ Design for; <li style="padding-left: 20px;">Laboratory & Pharmacy (1 set) ➤ Technical room for AC, electric & electronic control panel, clean and waste water connections ➤ <u>Dimensions</u> <li style="padding-left: 20px;">6058 mm (Length) <li style="padding-left: 20px;">2438 mm (Width) <li style="padding-left: 20px;">2590 mm (Height) <li style="padding-left: 20px;">Useful area without technical room 12.4 m² 		<p>1 pc.</p>	

- Three times epoxy primary coated (corrosion protected)
- High isolated special type sealant parts to protect the water and powder (locked type)
- Clean and Waste water tank connections
- GRP top plates (sloping roof)
- 8 pcs. ISO corner Castings on each corner, for easy loading

Floor

- Heavy duty floor structure, reinforcement bars and inside equipment fixing points
- Isolated 50mm sandwich floor with plywood on the inside and fiber glass externally, 18 mm marine type plywood, 50 mm XPS isolation material
- All floor surfaces will be cover 2 mm Anti-bacterial, Anti-static, Anti-slip safe, washable hospital vinyl floor
- 7 cm oval skirting all around the inside floor corners (anti-bacterial surface)
- Easy to clean

Operation Panel (In the technical room)

- Easy usage option
- All electronic components are Brand of Schneider
- Phase control relay for protecting wrong connections
- Data communication connections
- External electric connection socket (IP67 Protection level) and 10-meter extension cable
- All body protected with copper grounding pod

- Fire resistant electrical cables
- All electrical and data cables are jointless

External Side Walls & Roof

- 50 mm XPS isolation material (Total 62mm panel)
- Double Side 4mm MDF (Medium Density Fiberboard)
- Double side 2 mm fiberglass sheet, (Gel coat covered)
- Anti-bacterial, anti-static and UV (Ultraviolet stabilizer) panels
- Outside of the body is smooth and seamless
- GRP top plates (sloping roof)
- Local maintenance kit for panels

Internal Dividers & Installation

- 30 mm XPS isolation material
- Double side 2 mm fiberglass sheet
- UV (Ultraviolet stabilizer) panels
- Stainless Steel Hinges (on foldable walls)

Doors (With Installation)

- Panel doors, lockable
- Embedded type curtains for windows and doors
- RAL 9010 white color
- UV glass (double glass)

<p>Lighting</p> <ul style="list-style-type: none"> ➤ Decorative Slim LED Lighting ➤ Long durability ➤ Energy saving ➤ Emergency Light option on each room <p>Split Type AC</p> <ul style="list-style-type: none"> ➤ Split type AC units ➤ Copper Hose Installation with PVC cable trays ➤ Outdoor & Indoor Unit Installation with anti-vibration mounts ➤ Easily changeable filters ➤ Remote controller ➤ A+ Inverter type ➤ Condensate drainage system, Silent mode working <p>Alarm and Safety equipment</p> <ul style="list-style-type: none"> ➤ 2 pcs. x 2 kg Fire extinguisher ➤ Smoke detectors on each room 			
<p>Laboratory & Pharmacy Equipment</p> <ul style="list-style-type: none"> ➤ Biochemistry analyzer, 1 pc. ➤ Hematology analyzer, 1 pc. ➤ POCT Immunoassay, 1 pc. ➤ POCT Coagulation, 1 pc. ➤ Microscope, 1 pc. ➤ Centrifuge, 1 pc. 		1 set	

<ul style="list-style-type: none"> ➤ Deionized Water System, 1 pc. ➤ Refrigerator for drugs, 2 pc. ➤ Refrigerator for blood, 1 pc. ➤ Incubator, 1 pc. ➤ Covid-19 Antigen Kit, 30 pcs. ➤ Glucometer, 1 pc. ➤ Medication Bins, 15 pcs. ➤ Elisa Reader, 1 pc. ➤ Elisa Washer, 1 pc. ➤ Medical Storage Cabinets on both side of the long side walls, lockable ➤ Furniture 			

3. Special Design Container (Triage Unit)



<u>Products</u>		<u>Items</u>	
<p>Special Design 20 FT Container</p> <ul style="list-style-type: none"> ➤ 20 Feet Container ➤ Design for; <ul style="list-style-type: none"> Triage (1 set) ➤ Technical room for AC, electric & electronic control panel, clean and waste water connections ➤ <u>Dimensions</u> <ul style="list-style-type: none"> 6058 mm (Length) 2438 mm (Width) 2590 mm (Height) Useful area without technical room 12.4 m² ➤ Three times epoxy primary coated (corrosion protected) 		1 pc.	

- High isolated special type sealant parts to protect the water and powder (locked type)
- GRP top plates (sloping roof)
- 8 pcs. ISO corner Castings on each corner, for easy loading

Floor

- Heavy duty floor structure, reinforcement bars and inside equipment fixing points
- Isolated 50mm sandwich floor with plywood on the inside and fiber glass externally, 18 mm marine type plywood, 50 mm XPS isolation material
- All floor surfaces will be cover 2 mm Anti-bacterial, Anti-static, Anti-slip safe, washable hospital vinyl floor
- 7 cm oval skirting all around the inside floor corners (anti-bacterial surface)
- Easy to clean

Operation Panel (In the technical room)

- Easy usage option
- All electronic components are Brand of Schneider
- Phase control relay for protecting wrong connections
- Data communication connections
- External electric connection socket (IP67 Protection level) and 10-meter extension cable
- All body protected with copper grounding pod
- Fire resistant electrical cables
- All electrical and data cables are jointless

External Side Walls & Roof

- 50 mm XPS isolation material (Total 62mm panel)
- Double Side 4mm MDF (Medium Density Fiberboard)
- Double side 2 mm fiberglass sheet, (Gel coat covered)
- Anti-bacterial, anti-static and UV (Ultraviolet stabilizer) panels
- Outside of the body is smooth and seamless
- GRP top plates (sloping roof)
- Local maintenance kit for panels

Internal Dividers & Installation

- 30 mm XPS isolation material
- Double side 2 mm fiberglass sheet
- UV (Ultraviolet stabilizer) panels

Doors (With Installation)

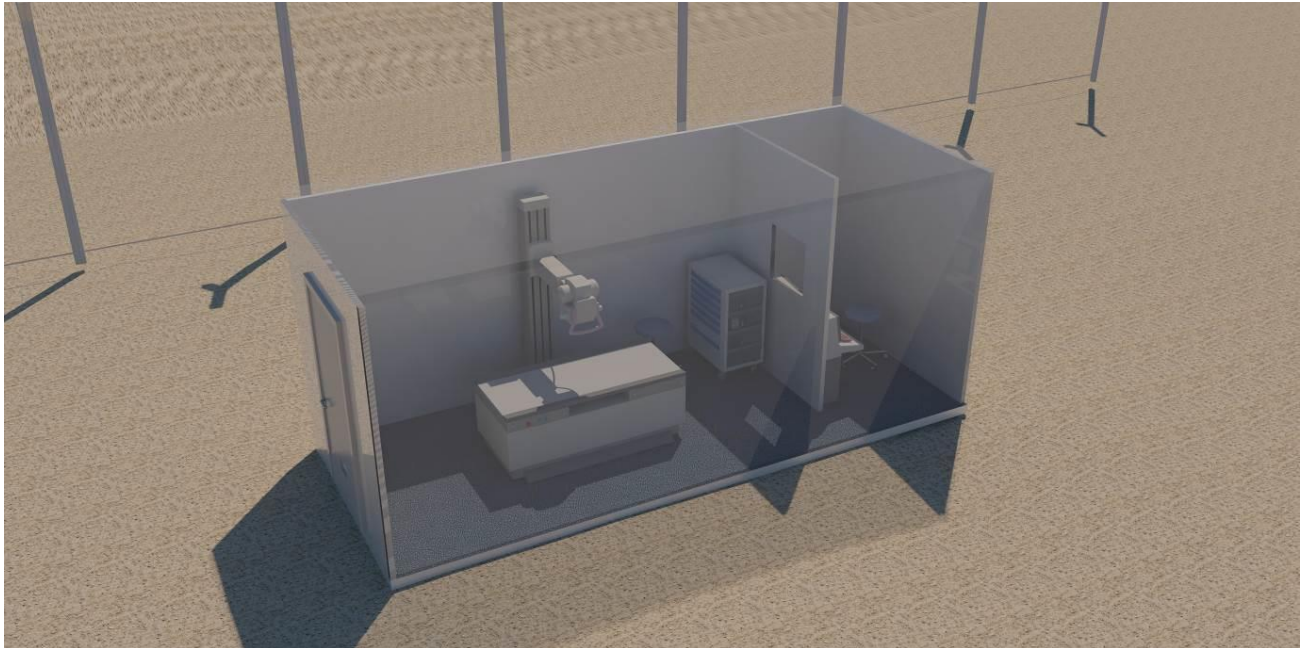
- Panel doors, lockable
- Embedded type curtains for windows and doors
- RAL 9010 white color
- UV glass (double glass)

Lighting

- Decorative Slim LED Lighting
- Long durability, Energy saving
- Emergency Light option on each room

<p>Split Type AC</p> <ul style="list-style-type: none"> ➤ Split type AC units ➤ Copper Hose Installation with PVC cable trays ➤ Outdoor & Indoor Unit Installation with anti-vibration mounts ➤ Easily changeable filters ➤ Remote controller ➤ A+ Inverter type ➤ Condensate drainage system, Silent mode working <p>Alarm and Safety equipment</p> <ul style="list-style-type: none"> ➤ 2 pcs. x 2 kg Fire extinguisher ➤ Smoke detectors on each room 		
<p>Triage Unit Equipment</p> <ul style="list-style-type: none"> ➤ Emergency Stretcher, 1 pc. ➤ Over Bed Table, 1 pc. ➤ Vital Signs Monitor, 1 pc. ➤ ECG Machine, 1 pc. ➤ Stethoscope, 1 pc. ➤ Pulse Oximeter, 3 pcs. ➤ Blood pressure monitor, 1 pc. ➤ Furniture 	<p>1 set</p>	

4. Special Design Container (Radiology & XRAY)



Special Container Design for Radiology and X-RAY Unit

<u>Products</u>		<u>Items</u>	
<p>Special Design Container (Lead Shield Protected)</p> <ul style="list-style-type: none"> ➤ 20 Feet Container ➤ Design for; <li style="color: red;">Radiology Unit (1 set) ➤ Technical room for AC, clean/waste water connections, electric & electronic control panel ➤ <u>Dimensions</u> 6058 mm (Length) 2438 mm (Width) 2900 mm (Height) Useful area without technical room 14,5 m² ➤ Three times epoxy primary coated (corrosion protected) 		1 pc.	

- High isolated special type sealant parts to protect the water and powder (locked type)
- Clean and Waste water tank connections
- GRP top plates (sloping roof)
- All floor surfaces 2 mm anti-static and anti-bacterial PVC coated
- 2 mm Lead Shield on the Examination and Control Room walls (XRAY Protected)
- 8 pcs. ISO corner Castings on each corner, for easy loading

Operation Panel (In the technical room)

- Easy usage option
- All electronic components are Brand of Schneider
- Phase control relay
- Data communication connections
- External electric connection socket (IP67 Protection level) and 10-meter extension cable

Floor

- Heavy duty floor structure
- Isolated 50mm sandwich floor with plywood on the inside and fiber glass externally, 18 mm marine type plywood, 50 mm XPS isolation material
- All floor surfaces will be cover 2 mm Anti-bacterial, Anti-static, Anti-slip safe, washable hospital vinyl floor
- 7 cm oval skirting all around the inside floor corners (anti-bacterial surface)
- Easy to clean

External Side Walls & Roof

- 50 mm XPS isolation material (Total 62mm panel)
- Double Side 4mm MDF (Medium Density Fiberboard)
- Double side 2 mm fiberglass sheet
- Anti-bacterial, anti-static and UV (Ultraviolet stabilizer) panels
- Outside of the body is smooth and seamless.

Internal Dividers & Installation

- 20 mm XPS isolation material (Total 32mm panel)
- Double Side 4mm MDF (Medium Density Fiberboard)
- Double side 2 mm fiberglass sheet
- Anti-bacterial, anti-static and UV (Ultraviolet stabilizer) panels
- Stainless Steel Hinges (on foldable walls)

Lead Shield

- Lead shield installations on X-Ray room walls
- Lead Protected entrance door
- Lead protected examination window

Doors (With Installation)

- Panel doors, lockable
- RAL 9016 white color

<p>Lighting</p> <ul style="list-style-type: none"> ➤ Decorative Slim LED Lighting ➤ Long durability ➤ Energy saving ➤ Emergency Light option on each room <p>Split Type AC</p> <ul style="list-style-type: none"> ➤ 1 pc. Split Type AC ➤ 18.000 btu Cooling and Heating capacity ➤ Copper Hose Installation ➤ Outdoor & Indoor Unit Installation ➤ Easily changeable filters ➤ Remote controller ➤ A+ Inverter type 		
<p>Radiology - X-Ray Unit Medical Equipment</p> <ul style="list-style-type: none"> ➤ X-Ray Unit, Digital, 1 pc. ➤ Utility Trolley, 1 pc. ➤ Coat-Apron, Lead Rubber, 1 pc. ➤ X-Ray Stretcher, 1 pc. ➤ Swivel Stool, 1 pc. 	1 set	

5. Special Design 20 FT Container (Doctor & Nurse Unit)



<u>Products</u>		<u>Items</u>	
<p>Special Design 20 ft Container</p> <ul style="list-style-type: none"> ➤ 20 Feet Container ➤ Design for; <ul style="list-style-type: none"> Doctor & Nurse Unit (1 set) ➤ Technical room for AC, electric & electronic control panel, clean and waste water connections ➤ <u>Dimensions</u> <ul style="list-style-type: none"> 6058 mm (Length) 2438 mm (Width) 2590 mm (Height) Useful area without technical room 12.4 m² ➤ Three times epoxy primary coated (corrosion protected) 		1 pc.	

- High isolated special type sealant parts to protect the water and powder (locked type)
- Clean and Waste water tank connections
- GRP top plates (sloping roof)
- 8 pcs. ISO corner Castings on each corner, for easy loading

Floor

- Heavy duty floor structure, reinforcement bars and inside equipment fixing points
- Isolated 50mm sandwich floor with plywood on the inside and fiber glass externally, 18 mm marine type plywood, 50 mm XPS isolation material
- All floor surfaces will be cover 2 mm Anti-bacterial, Anti-static, Anti-slip safe, washable hospital vinyl floor
- 7 cm oval skirting all around the inside floor corners (anti-bacterial surface)
- Easy to clean

Operation Panel (In the technical room)

- Easy usage option
- All electronic components are Brand of Schneider
- Phase control relay for protecting wrong connections
- Data communication connections
- External electric connection socket (IP67 Protection level) and 10-meter extension cable
- All body protected with copper grounding pod
- Fire resistant electrical cables

- All electrical and data cables are jointless

External Side Walls & Roof

- 50 mm XPS isolation material (Total 62mm panel)
- Double Side 4mm MDF (Medium Density Fiberboard)
- Double side 2 mm fiberglass sheet, (Gel coat covered)
- Anti-bacterial, anti-static and UV (Ultraviolet stabilizer) panels
- Outside of the body is smooth and seamless
- GRP top plates (sloping roof)
- Local maintenance kit for panels

Internal Dividers & Installation

- 30 mm XPS isolation material
- Double Side 4mm MDF (Medium Density Fiberboard)
- Double side 2 mm fiberglass sheet, (Gel coat covered)
- UV (Ultraviolet stabilizer) panels
- Stainless Steel Hinges (on foldable walls)

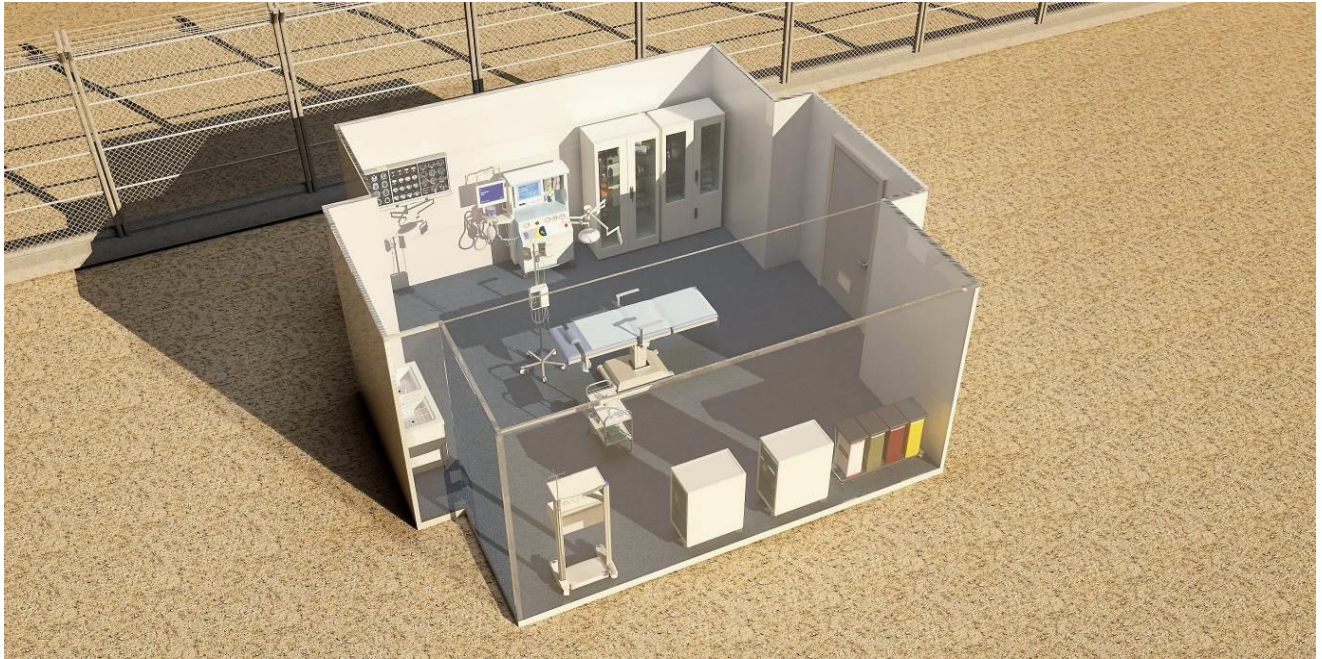
Doors (With Installation)

- Panel doors, lockable
- Embedded type curtains for windows and doors
- RAL 9016 white color
- UV glass (double glass)

<p>Lighting</p> <ul style="list-style-type: none"> ➤ Decorative Slim LED Lighting ➤ Long durability, Energy saving ➤ Emergency Light option on each room <p>Split Type AC</p> <ul style="list-style-type: none"> ➤ Split type AC units ➤ Copper Hose Installation with PVC cable trays ➤ Outdoor & Indoor Unit Installation with anti-vibration mounts ➤ Easily changeable filters ➤ Remote controller ➤ A+ Inverter type ➤ Condensate drainage system ➤ Silent mode working <p>Alarm and Safety equipment</p> <ul style="list-style-type: none"> ➤ 2 pcs. x 2 kg Fire extinguisher ➤ Smoke detectors on each room 			
<p>Inside Equipment & Accessories</p> <ul style="list-style-type: none"> ➤ 3 pcs. working table with drawers, high quality ➤ Decorative ➤ 3 pcs. operator chair with armrest, wheels ➤ 3 pcs. waiting chair ➤ Cabinet for accessories and upper cabinet with door hinged 		1 set	

<ul style="list-style-type: none">➤ Water dispenser, 1 pc.➤ 3 pcs. laptop, min. i5 processor, Full HD➤ 3 pcs. A4 laser printer, colored			

6. Double Sides Expandable Container (Operation Theatre)



3 in 1 Expandable Container Design for Operation Theatre

<u>Products</u>		<u>Items</u>	
<p>Double Side Expandable Container (20 ft)</p> <ul style="list-style-type: none"> ➤ 20 Feet Expandable Container ➤ Design for; <p style="color: red; margin-left: 20px;">Operation Theatre (1 set)</p> <ul style="list-style-type: none"> ➤ Technical room for HEPA unit, clean/waste water connections, hydraulic power unit and electric & electronic control panel ➤ <u>Dimensions</u> <p style="margin-left: 20px;">6058 mm (Length)</p> <p style="margin-left: 20px;">2438 mm (Width) & 5738 mm (open position)</p> <p style="margin-left: 20px;">1650 mm expansion on both sides</p> <p style="margin-left: 20px;">2590 mm (Height)</p> <p style="margin-left: 20px;">Useful area without technical room 28,4 m²</p>		<p>1 pc.</p>	

- Heavy duty and long-life Rail Production on CNC Machines
- Special Type Rail Wheels with Strong Bearings
- 4Pcs. Special Design Support Mechanical Jack to protect the alignment issue. They prevent the shaking and support the weight of rooms. This Jacks are mounted under the container rooms
- Three times epoxy primary coated (corrosion protected)
- High isolated special type sealant parts to protect the water and powder (locked type)
- Clean and Waste water tank connections
- GRP top plates (sloping roof)
- 8 pcs. ISO corner Castings on each corner, for easy loading

Floor

- Heavy duty floor structure, reinforcement bars and inside equipment fixing points
- Isolated 50mm sandwich floor with plywood on the inside and fiber glass externally, 18 mm marine type plywood, 50 mm XPS isolation material
- All floor surfaces will be cover 2 mm Anti-bacterial, Anti-static, Anti-slip safe, washable hospital vinyl floor
- 7 cm oval skirting all around the inside floor corners (anti-bacterial surface)
- Easy to clean

Hydraulic Power Unit & Operation Panel (In the technical room)

- Hydraulic cylinders (4 pcs.) (For expanding rooms)

- Hydraulic power unit with high isolated cabinet
- R2 double steel wire reinforced hydraulic hose, two layers of high tensile braided steel wires, making the hose have solid structure and resistant to high pressure
- Hydraulic oil level gage, temperature gage, oil filter
- Hydraulic locks for protects the system during the transportation
- Adjustable speed valve
- Safety sensors to protect wrong using
- Easy usage option
- Electronic control panel
- All electronic components are Brand of Schneider
- Magnetic thermic switches for protecting the electrical motor
- Phase control relay for protecting wrong connections
- Data communication connections
- External electric connection socket (IP67 Protection level) and 10-meter extension cable
- All body protected with copper grounding pod
- Fire resistant electrical cables
- All electrical and data cables are jointless

External Side Walls & Roof

- 50 mm XPS isolation material (Total 62mm panel)
- Double Side 4mm MDF (Medium Density Fiberboard)
- Double side 2 mm fiberglass sheet, (Gel coat covered)

- Anti-bacterial, anti-static and UV (Ultraviolet stabilizer) panels
- Outside of the body is smooth and seamless
- GRP top plates (sloping roof)
- Local maintenance kit for panels

Internal Dividers & Installation

- 30 mm XPS isolation material
- Double side 2 mm fiberglass sheet
- UV (Ultraviolet stabilizer) panels
- Stainless Steel Hinges (on foldable walls)

Doors (With Installation)

- Panel doors, lockable
- Embedded type curtains for windows and doors
- RAL 9016 white color
- UV glass (double glass)

Lighting

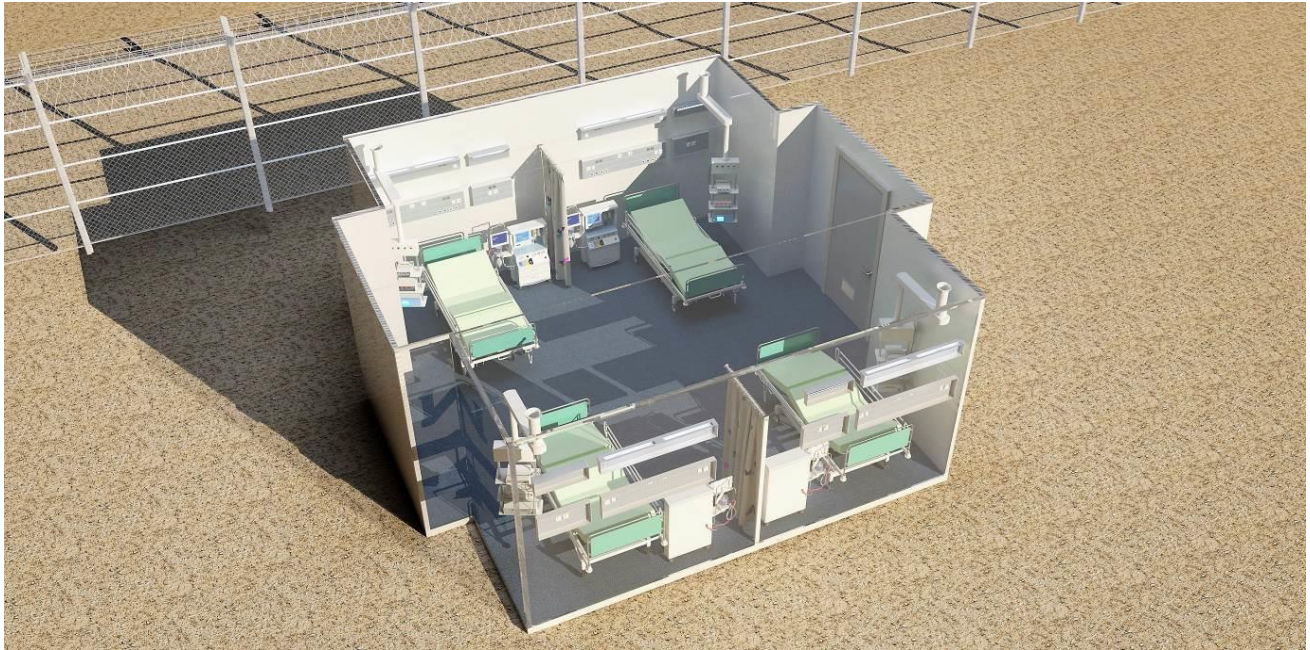
- Decorative Slim LED Lighting
- Long durability
- Energy saving
- Emergency Light option on each room

Package Hygienic Air Handling Unit

<ul style="list-style-type: none"> ➤ Hygienic Air Handling Unit for HEPA Filtration System ➤ Easy changeable HEPA filters ➤ Touch screen control panel ➤ Integrated steam humidifier <p>Medical Gas Installations</p> <ul style="list-style-type: none"> ➤ Medical gas installation ➤ External gas connection sockets for N2O, O2, Air, Vacuum <p>Alarm and Safety equipment</p> <ul style="list-style-type: none"> ➤ 2 pcs. x 2 kg Fire extinguisher ➤ Smoke detectors on each room 			
<p>Operation Theatre Medical Equipment</p> <ul style="list-style-type: none"> ➤ Operating Table with Standard Accessories, 1 pc. ➤ Operating Lamp, 1 pc. ➤ Electrosurgical Unit, 1 pc. ➤ Secretion Suction Pump, 1 pc. ➤ Major Surgery Basic Kit, 1 pc. ➤ Tracheotomy Set, 1 pc. ➤ Mobile Inhalation Anesthesia Machine, 1 pc. ➤ Mayo Trolley, 1 pc. ➤ Defibrillator, 1 pc. ➤ Laryngoscope, 1 pc. ➤ Endotracheal tub set, 1 pc. 		1 set	

<ul style="list-style-type: none">➤ Bag Resuscitator for Adults, 1 pc.➤ Syringe Pump, 1 pc.➤ Infusion Pump, 1 pc.➤ IV Stand, 2 pcs.➤ OR Stepping Stool, 1 pc.➤ Bowl Stand, 2 bowls, 1 pc.➤ Kick Bucket (20 LT), 1 pc.➤ Swivel Stool, 1 pc.➤ Wall Mounted Cabinet, 1 pc.➤ Trolley, General Cart, 1 pc.			

7. Double Sides Expandable Container (Intensive Care Units)



3 in 1 Expandable Container Design for ICU

<u>Products</u>		<u>Items</u>	
<p>Double Side Expandable Container (20 FT)</p> <ul style="list-style-type: none"> ➤ 20 Feet Expandable Container ➤ Design for; <ul style="list-style-type: none"> ICU, 4 beds capacity (1 set) Totally 4 beds ➤ Technical room for HEPA unit, clean/waste water connections, hydraulic power unit and electric & electronic control panel ➤ <u>Dimensions</u> <ul style="list-style-type: none"> 6058 mm (Length) 2438 mm (Width) & 5738 mm (open position) 1650 mm expansion on both sides 2590 mm (Height) 		<p>1 pc.</p>	

Useful area without technical room 28,4 m²

- Heavy duty and long-life Rail Production on CNC Machines
- Special Type Rail Wheels with Strong Bearings
- 4Pcs. Special Design Support Mechanical Jack to protect the alignment issue. They prevent the shaking and support the weight of rooms. This Jacks are mounted under the container rooms
- Three times epoxy primary coated (corrosion protected)
- High isolated special type sealant parts to protect the water and powder (locked type)
- Clean and Waste water tank connections
- GRP top plates (sloping roof)
- 8 pcs. ISO corner Castings on each corner, for easy loading

Floor

- Heavy duty floor structure, reinforcement bars and inside equipment fixing points
- Isolated 50mm sandwich floor with plywood on the inside and fiber glass externally, 18 mm marine type plywood, 50 mm XPS isolation material
- All floor surfaces will be cover 2 mm Anti-bacterial, Anti-static, Anti-slip safe, washable hospital vinyl floor
- 7 cm oval skirting all around the inside floor corners (anti-bacterial surface)
- Easy to clean

Hydraulic Power Unit & Operation Panel (In the technical room)

- Hydraulic cylinders (4 pcs.) (For expanding rooms)
- Hydraulic power unit with high isolated cabinet
- R2 double steel wire reinforced hydraulic hose, two layers of high tensile braided steel wires, making the hose have solid structure and resistant to high pressure
- Hydraulic oil level gage, temperature gage, oil filter
- Hydraulic locks for protects the system during the transportation
- Adjustable speed valve
- Safety sensors to protect wrong using
- Easy usage option
- Electronic control panel
- All electronic components are Brand of Schneider
- Magnetic thermic switches for protecting the electrical motor
- Phase control relay for protecting wrong connections
- Data communication connections
- External electric connection socket (IP67 Protection level) and 10-meter extension cable
- All body protected with copper grounding pod
- Fire resistant electrical cables
- All electrical and data cables are jointless

External Side Walls & Roof

- 50 mm XPS isolation material (Total 62mm panel)
- Double Side 4mm MDF (Medium Density Fiberboard)

- Double side 2 mm fiberglass sheet, (Gel coat covered)
- Anti-bacterial, anti-static and UV (Ultraviolet stabilizer) panels
- Outside of the body is smooth and seamless
- GRP top plates (sloping roof)
- Local maintenance kit for panels

Internal Dividers & Installation

- 30 mm XPS isolation material
- Double side 2 mm fiberglass sheet
- UV (Ultraviolet stabilizer) panels
- Stainless Steel Hinges (on foldable walls)

Doors (With Installation)

- Panel doors, lockable
- Embedded type curtains for windows and doors
- RAL 9010 white color
- UV glass (double glass)

Lighting

- Decorative Slim LED Lighting
- Long durability
- Energy saving
- Emergency Light option on each room

<p>Package Hygienic Air Handling Unit</p> <ul style="list-style-type: none"> ➤ Hygienic Air Handling Unit for HEPA Filtration System ➤ Easy changeable HEPA filters ➤ Touch screen control panel ➤ Integrated steam humidifier <p>Medical Gas Installations</p> <ul style="list-style-type: none"> ➤ Head Units for each bed ➤ Medical gas installation for Head Units ➤ External gas connection sockets <p>Alarm and Safety equipment</p> <ul style="list-style-type: none"> ➤ 2 pcs. x 2 kg Fire extinguisher ➤ Smoke detectors on each room 			
<p>Intensive Care Unit Medical Equipment</p> <ul style="list-style-type: none"> ➤ Hospital Bed, foldable, 4 pcs. ➤ ICU Trolley, 1 pc. ➤ Mayo Trolley, 4 pcs. ➤ Defibrillator, 1 pc. ➤ Bag Resuscitator for Adults, 4 pcs. ➤ Laryngoscope Set, 4 pcs. ➤ Patient monitor, 4 pcs. ➤ IV Stand with including syringe pump & infusion pump, 4 pcs. ➤ ICU Tribune Ventilator, 4 pcs. 		1 set	

<ul style="list-style-type: none">➤ Suction device, 1 pc.➤ Kick Bucket, 2 pcs.➤ Swivel Stool, 2 pcs.➤ Patient warmer, 1 pc.			

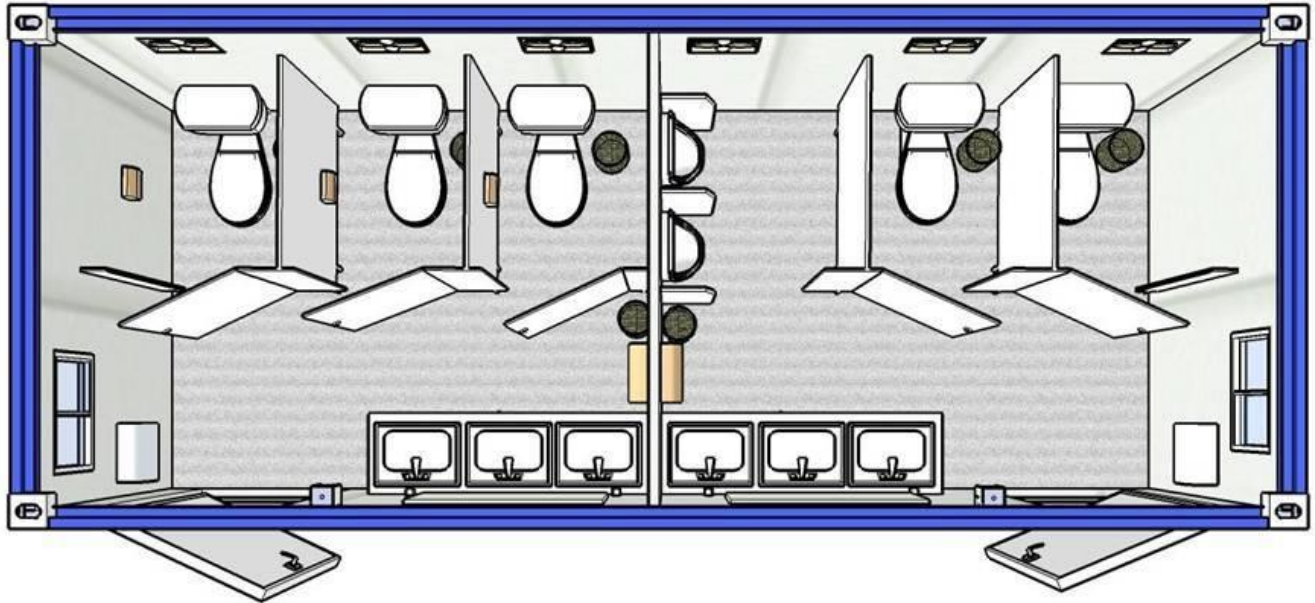
8. Special Type Tent (Patient Wards)



<u>Products</u>		<u>Items</u>	
<p>Special Type Tent</p> <ul style="list-style-type: none"> ➤ 25 m² Patient Wards / Recovery (5 beds each tent) (4 sets for 20 patients) ➤ Made of PES (polyester fibers) and coated in flame-retarding, fungicide PVC, top coat executed in acrylic lacquer ➤ Including air conditioning ➤ Assembly time: app. 10 min. by 2 persons ➤ Divided in different compartments, i.e., if one compartment should be damaged the tent will not collapse and the damaged part can be exchanged. ➤ Flooring ➤ Robust and high strength ➤ Slip-resistant ➤ Resistant to oil and petrol 		4 pcs.	

<ul style="list-style-type: none"> ➤ Tents are interconnected by special connector tents 		
<p>Patient Ward Medical Equipment</p> <ul style="list-style-type: none"> ➤ Hospital Bed, foldable, 5 pcs. ➤ Over Bed Table, 5 pcs. ➤ Vital Signs Monitor, 5 pcs. ➤ O2 Cylinder with stand, 5 pcs. ➤ Bed side cabinet, 5 pcs. ➤ Nebulizer, 5 pcs. ➤ IV Stand with syringe pump& infusion pump, 5 pcs. ➤ Transport Ventilator, 5 pcs. ➤ ECG Machine, 1 pc. ➤ Suction device, 5 pcs. ➤ Medical Waste Box, 1 pc. ➤ Swivel Stool, 2 pcs. 	<p>4 set</p>	

9. Special Design 20 FT WC & Shower Sanitary Containers (Male)



Products		Items	
<p>Sanitary Containers</p> <p>(Design for Sanitary Unit)</p> <ul style="list-style-type: none"> ➤ 20 FT Special Design Container ➤ Hygienic services, (Bath, shower), 1 set ➤ Module consists; <ul style="list-style-type: none"> Technical room 6 separately shower cabin Sink area Entrance hall ➤ <u>Dimensions</u> <ul style="list-style-type: none"> 6058 mm (total length with technical room) 2438 mm (Width) 		<p>1 set</p>	

- Three times epoxy primary coated (corrosion protected) RAL9016
- High isolated special type sealant parts to protect the water and powder (locked type)
- 8 pcs. ISO corner Castings on each corner, for easy loading

Operation Panel (In the technical room)

- Easy usage option
- All electronic components are Brand of Schneider
- External electric connection socket (IP67 Protection level) and 15-meter extension cable
- All body protected with copper grounding pod
- Fire resistant electrical cables
- All electrical and data cables are jointless

Floor

- Heavy duty floor structure, reinforcement bars and inside equipment fixing points
- Isolated sandwich floor with plywood on the inside and fiber glass externally, 18 mm marine type plywood, 100 mm XPS isolation material
- All floor surfaces will be cover 2 mm anti-bacterial and anti-static floor covering
- 7 cm side skirting on all floor surfaces for anti-bacterial issue
- Easy to clean

Lighting

- Decorative Slim LED Lighting

External Side Walls & Roof

- Sandwich panel with 50 mm isolation material, double sides electro static painted steel sheet

Internal Dividers & Installation

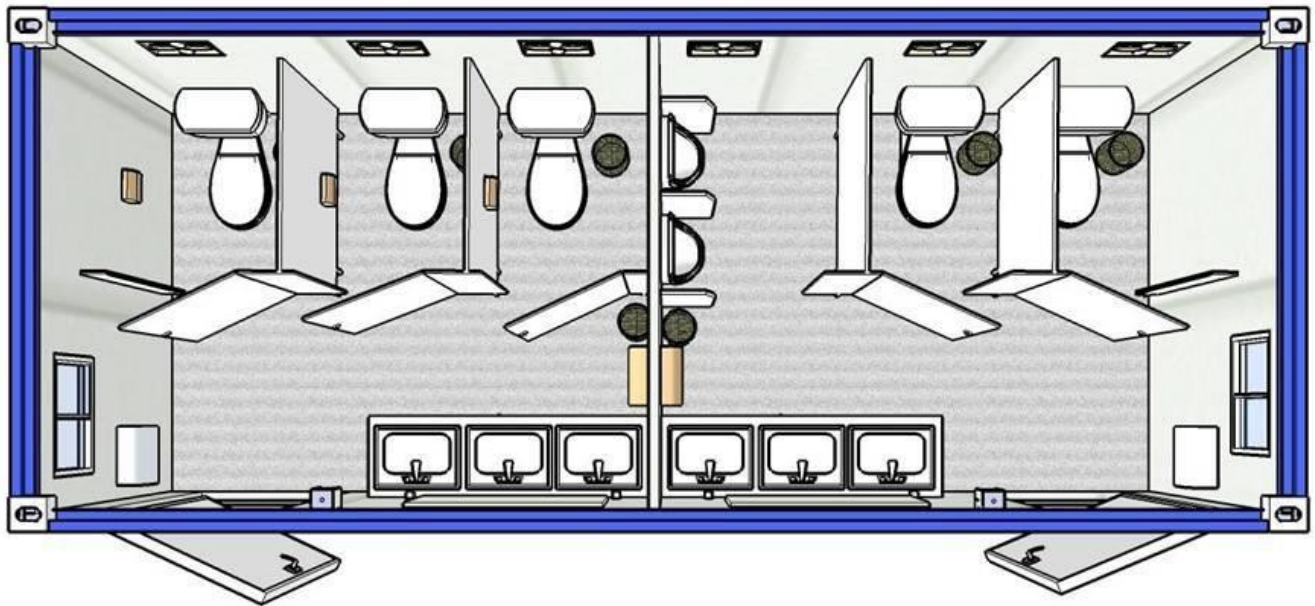
- Sandwich panel with 50 mm isolation material, double sides electro static painted steel sheet
- Stainless Steel Hinges (on foldable walls)

Inside Equipment and Accessories**Water System and WC Room**

- Clean water connection
- Waste water connections
- Electrical water heater, 30 liters
- Module includes;
6 set WC rooms

Continuous stainless steel hand basin with three hand sensors and central continuous mirror, stainless steel soap dispenser, dry hands, paper towel dispenser
- Fan ventilation system

10. Special Design 20 FT WC & Shower Sanitary Containers (Female)



Products		Items	
<p>Sanitary Containers</p> <p>(Design for Sanitary Unit)</p> <ul style="list-style-type: none"> ➤ 20 FT Special Design Container ➤ Hygienic services, (Bath, shower), 1 set ➤ Module consists; <ul style="list-style-type: none"> Technical room 6 WC cabin Sink area Entrance hall ➤ <u>Dimensions</u> <ul style="list-style-type: none"> 6058 mm (total length with technical room) 2438 mm (Width) 		<p>1 set</p>	

- Three times epoxy primary coated (corrosion protected) RAL9016
- High isolated special type sealant parts to protect the water and powder (locked type)
- 8 pcs. ISO corner Castings on each corner, for easy loading

Operation Panel (In the technical room)

- Easy usage option
- All electronic components are Brand of Schneider
- External electric connection socket (IP67 Protection level) and 15-meter extension cable
- All body protected with copper grounding pod
- Fire resistant electrical cables
- All electrical and data cables are jointless

Floor

- Heavy duty floor structure, reinforcement bars and inside equipment fixing points
- Isolated sandwich floor with plywood on the inside and fiber glass externally, 18 mm marine type plywood, 100 mm XPS isolation material
- All floor surfaces will be cover 2 mm anti-bacterial and anti-static floor covering
- 7 cm side skirting on all floor surfaces for anti-bacterial issue
- Easy to clean

Lighting

- Decorative Slim LED Lighting

External Side Walls & Roof

- Sandwich panel with 50 mm isolation material, double sides electro static painted steel sheet

Internal Dividers & Installation

- Sandwich panel with 50 mm isolation material, double sides electro static painted steel sheet
- Stainless Steel Hinges (on foldable walls)

Inside Equipment and Accessories**Water System and WC Room**

- Clean water connection
- Waste water connections
- Electrical water heater, 30 liters
- Module includes;
6 set WC rooms

Continuous stainless steel hand basin with three hand sensors and central continuous mirror, stainless steel soap dispenser, dry hands, paper towel dispenser
- Electrical heater for shower cabins
- Fan ventilation system

11. Special Design Mobile Generator



<u>Products</u>		<u>Items</u>	
<p>Special Type Generator and Drawbar Trailer</p> <ul style="list-style-type: none"> ➤ Special Design, Mobile Type Generator Unit Generator Unit, Distribution panel Fuel Tank ➤ Three times epoxy primary coated (corrosion protected) <p>Generator Unit</p> <ul style="list-style-type: none"> ➤ 150 kVA Capacity ➤ High Isolated Acoustic Cabinet ➤ AVR & ATS (Automatic Voltage Regulator & Automatic Transfer Switch) ➤ Diesel Engine ➤ Embedded fuel tank 		<p>1 set</p>	

12. Water Purification Container



<u>Products</u>		<u>Items</u>	
<p>Water Purification Container</p> <ul style="list-style-type: none"> ➤ 1 pcs. 20 FT ISO Steel Container ➤ 8 pcs. ISO corner Castings on each corner, for easy loading <p>10.1 liter / day water purification system</p> <ul style="list-style-type: none"> ➤ RO Feed Water Flow 16,6 m3/day ➤ RO Product Water Flow 10 m3/day ➤ RO Units Recovery 60% ➤ Automatic Chlorine Dosing Unit-Flow Meter Controlled ➤ Raw Water Tank- 2 M3 --Pe ➤ System Feed Pressurizing-2x1 M3/H @ 4-6 Bar ➤ Automatic Multi - Media Filtration System-77 F 1220 Mm ➤ Automatic Activated Carbon Filter-77 F 1220 Ac ➤ Automatic Twin Softening Unit-91 F 1045 T ➤ Antiscalant Dosing Unit 		<p>1 set</p>	

- | | | | |
|--|--|--|--|
| <ul style="list-style-type: none">➤ Reverse Osmosis System-Tfh 002➤ Manuel Dolomite Filter-Dol 12"➤ Auto. Post-Chlorination Dosing Unit➤ Clean Water Tank➤ System Feed Pressurizing➤ 10.000-liter clean water tank➤ Automatic Water pump | | | |
| | | | |

13. Special Design 20 FT Container (Medical Storage Unit)



<u>Products</u>		<u>Items</u>	
<p>Special Design 20 ft Container</p> <ul style="list-style-type: none"> ➤ 20 Feet Container ➤ Design for; <li style="padding-left: 20px;">Medical Storage Unit (1set) ➤ Technical room for AC, electric & electronic control panel, clean and waste water connections ➤ <u>Dimensions</u> <li style="padding-left: 20px;">6058 mm (Length) <li style="padding-left: 20px;">2438 mm (Width) <li style="padding-left: 20px;">2590 mm (Height) <li style="padding-left: 20px;">Useful area without technical room 12.4 m² ➤ Three times epoxy primary coated (corrosion protected) 		<p>1 pc.</p>	

- High isolated special type sealant parts to protect the water and powder (locked type)
- Clean and Waste water tank connections
- 8 pcs. ISO corner Castings on each corner, for easy loading

Floor

- Heavy duty floor structure, reinforcement bars and inside equipment fixing points
- Isolated 50mm sandwich floor with plywood on the inside and fiber glass externally, 18 mm marine type plywood, 50 mm XPS isolation material
- All floor surfaces will be cover 2 mm Anti-bacterial, Anti-static, Anti-slip safe, washable hospital vinyl floor
- 7 cm oval skirting all around the inside floor corners (anti-bacterial surface)
- Easy to clean

Operation Panel (In the technical room)

- Easy usage option
- All electronic components are Brand of Schneider
- Phase control relay for protecting wrong connections
- Data communication connections
- External electric connection socket (IP67 Protection level) and 10-meter extension cable
- All body protected with copper grounding pod
- Fire resistant electrical cables
- All electrical and data cables are jointless

External Side Walls & Roof

- Sandwich panel with 50 mm isolation material, double sides electro static painted steel sheet

Internal Dividers & Installation

- Sandwich panel with 50 mm isolation material, double sides electro static painted steel sheet
- Stainless Steel Hinges (on foldable walls)

Doors (With Installation)

- Panel doors, lockable
- Embedded type curtains for windows and doors
- RAL 9016 white color
- UV glass (double glass)

Lighting

- Decorative Slim LED Lighting
- Long durability
- Energy saving
- Emergency Light option on each room

Split Type AC

- Split type AC units
- Copper Hose Installation with PVC cable trays
- Outdoor & Indoor Unit Installation with anti-vibration mounts
- Easily changeable filters

- Remote controller
- A+ Inverter type
- Condensate drainage system
- Silent mode working

Alarm, Safety and Inside equipment

- 2 pcs. x 2 kg Fire extinguisher
- Smoke detectors on each room
- Medical Storage Cabinets on both side of the long side walls, lockable

14. Special Design 40 FT Big Corridor Containers

<u>Products</u>		<u>Items</u>	
<p>Special Design 40 FT Container</p> <ul style="list-style-type: none"> ➤ 40 Feet Container ➤ Design for; <ul style="list-style-type: none"> Big Corridor Container Containers (2 sets) ➤ Technical room for AC, electric & electronic control panel, clean and waste water connections ➤ <u>Dimensions</u> <ul style="list-style-type: none"> 12190 mm (Length) 2438 mm (Width) 2590 mm (Height) Useful area without technical room 28.8 m² ➤ Three times epoxy primary coated (corrosion protected) ➤ High isolated special type sealant parts to protect the water and powder (locked type) ➤ 8 pcs. ISO corner Castings on each corner, for easy loading <p>Floor</p> <ul style="list-style-type: none"> ➤ Heavy duty floor structure, reinforcement bars and inside equipment fixing points ➤ Isolated 50mm sandwich floor with plywood on the inside and fiber glass externally, 18 mm marine type plywood, 50 mm XPS isolation material ➤ All floor surfaces will be cover 2 mm Anti-bacterial, Anti-static, Anti-slip safe, washable hospital vinyl floor 		<p>2 pcs.</p>	

- 7 cm oval skirting all around the inside floor corners (anti-bacterial surface)
- Easy to clean

Operation Panel (In the technical room)

- Easy usage option
- All electronic components are Brand of Schneider
- Phase control relay for protecting wrong connections
- Data communication connections
- External electric connection socket (IP67 Protection level) and 10-meter extension cable
- All body protected with copper grounding pod
- Fire resistant electrical cables
- All electrical and data cables are jointless
- Connection point with other containers

External Side Walls & Roof

- Sandwich panel with 50 mm isolation material, double sides electro static painted steel sheet

Internal Dividers & Installation

- Sandwich panel with 50 mm isolation material, double sides electro static painted steel sheet
- Stainless Steel Hinges (on foldable walls)

Lighting

- Decorative Slim LED Lighting
- Long durability
- Energy saving
- Emergency Light option on each room

Split Type AC

- Split type AC units
- Copper Hose Installation with PVC cable trays
- Outdoor & Indoor Unit Installation with anti-vibration mounts
- Easily changeable filters
- Remote controller
- A+ Inverter type
- Condensate drainage system
- Silent mode working

Alarm and Safety equipment

- 2 pcs. x 2 kg Fire extinguisher
- Smoke detectors on each room

14. Special Design Small Corridor Container

<u>Products</u>		<u>Items</u>	
<p>4-Special Design 20 ft Container</p> <ul style="list-style-type: none"> ➤ 20 Feet Container ➤ Design for; <ul style="list-style-type: none"> Small Corridor (1 set) ➤ Technical room for AC, electric & electronic control panel, clean and waste water connections ➤ <u>Dimensions</u> <ul style="list-style-type: none"> 6058 mm (Length) 2438 mm (Width) 2590 mm (Height) Useful area without technical room 12.4 m² ➤ Three times epoxy primary coated (corrosion protected) ➤ High isolated special type sealant parts to protect the water and powder (locked type) ➤ Clean and Waste water tank connections ➤ GRP top plates (sloping roof) ➤ 8 pcs. ISO corner Castings on each corner, for easy loading <p>Floor</p> <ul style="list-style-type: none"> ➤ Heavy duty floor structure, reinforcement bars and inside equipment fixing points ➤ Isolated 50mm sandwich floor with plywood on the inside and fiber glass externally, 18 mm marine type plywood, 50 mm XPS isolation material 		<p>1 pc.</p>	

- All floor surfaces will be cover 2 mm Anti-bacterial, Anti-static, Anti-slip safe, washable hospital vinyl floor
- 7 cm oval skirting all around the inside floor corners (anti-bacterial surface)
- Easy to clean

Operation Panel (In the technical room)

- Easy usage option
- All electronic components are Brand of Schneider
- Phase control relay for protecting wrong connections
- Data communication connections
- External electric connection socket (IP67 Protection level) and 10-meter extension cable
- All body protected with copper grounding pod
- Fire resistant electrical cables
- All electrical and data cables are jointless

External Side Walls & Roof

- Sandwich panel with 50 mm isolation material, double sides electro static painted steel sheet

Internal Dividers & Installation

- Sandwich panel with 50 mm isolation material, double sides electro static painted steel sheet
- Stainless Steel Hinges (on foldable walls)
- Connection points with other containers

Lighting

- Decorative Slim LED Lighting
- Long durability
- Energy saving
- Emergency Light option on each room

Split Type AC

- Split type AC units
- Copper Hose Installation with PVC cable trays
- Outdoor & Indoor Unit Installation with anti-vibration mounts
- Easily changeable filters
- Remote controller
- A+ Inverter type
- Condensate drainage system
- Silent mode working

Alarm and Safety equipment

- 2 pcs. x 2 kg Fire extinguisher
- Smoke detector

Total List

	Products		Items	
1.	Special Design 20 FT Container (Access Unit) Inside Equipment & Accessories		1 set 1 set	
2.	Special Design Container (Laboratory & Pharmacy Unit) Laboratory & Pharmacy Unit Medical Equipment		1 set 1 set	
3.	Special Design Container (Triage Unit) Special Design Container (Triage Unit) Medical Equipment		1 set 1 set	
4.	Special Design Container (Radiology & XRAY) Radiology & XRAY Medical Equipment		1 set 1 set	
5.	Special Design 20 FT Container (Doctor & Nurse Unit) Inside Equipment & Accessories		1 set 1 set	
6.	Double Sides Expandable Container (Operation Theatre) Operation Theatre Medical Equipment		1 set 1 set	
7.	Double Sides Expandable Container (Intensive Care Units) Intensive Care Units Medical Equipment		1 set 1 set	
8.	Special Type Tent (Patient Wards) Special Type Tent (Patient Wards) Medical Equipment		4 set 4 set	
9.	Special Design 20 FT WC & Shower Containers (Male)		1 set	
10.	Special Design 20 FT WC & Shower Containers (Female)		1 set	
11.	Special Design Mobile Generator		1 set	
12.	Water Purification Container		1 set	
13.	Special Design 20 FT Container (Medical Storage Unit)		1 set	
14.	Special Design 40 FT Big Corridor Containers		2 set	
15.	Special Design Small Corridor Container		1 set	

TOTAL PRICE : 1.876.537,50 Eur