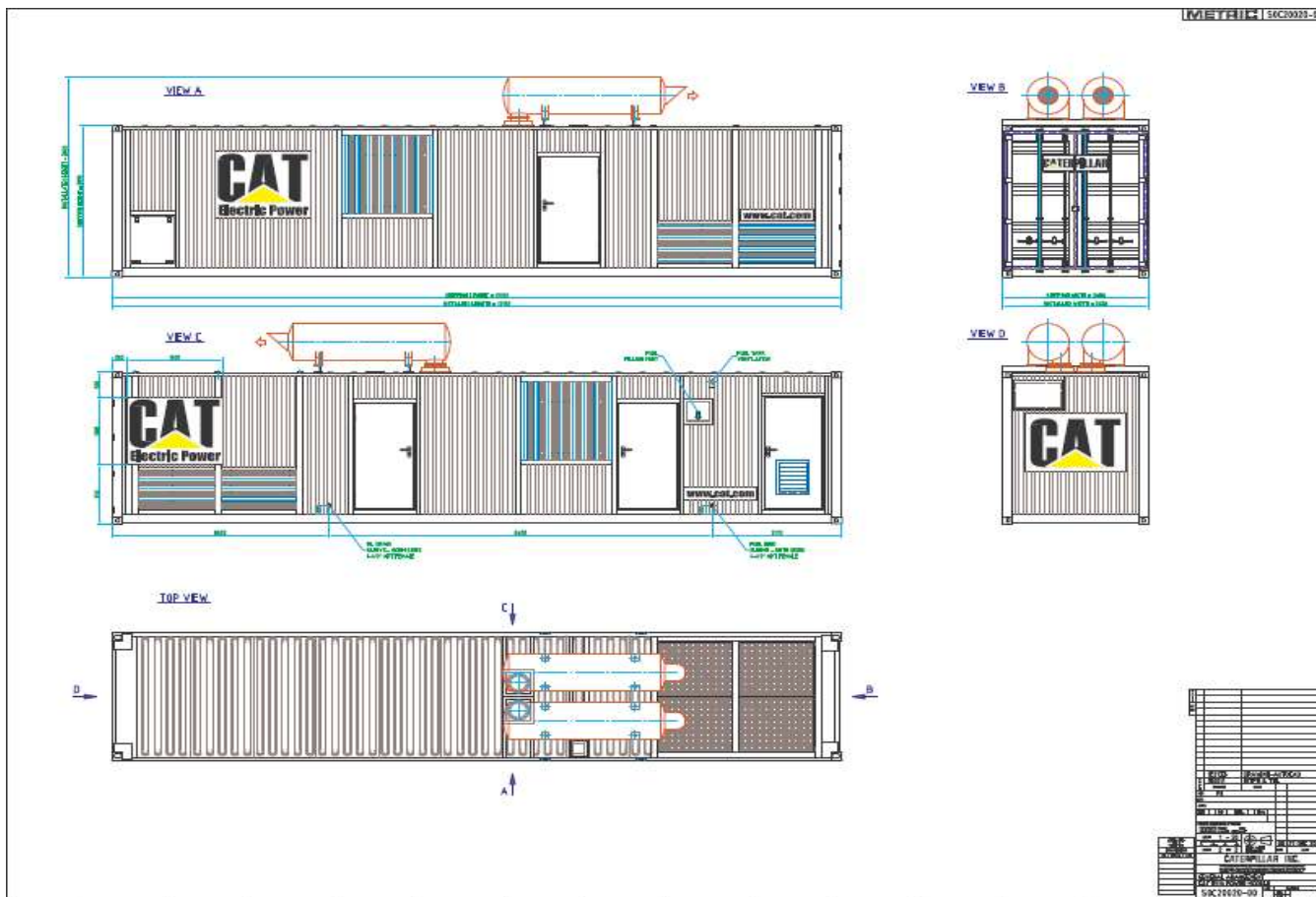


CAT 3516B Power Module GA



Equipment Status Report 11-11-2020

| Sr. No | Eq. No. | Engine Serial No. | Engine Model | Power Module | Present Smr | Need To Repair | | PMS | Valve Lash Schedule | | | Overhauling Schedule | | | | Status of Units |
|--------|---------|-------------------|--------------|--------------|-------------|---------------------------|--|-------|---------------------|-------------|---------------|----------------------|--------------|-------------|---------------|-----------------|
| | | | | | | MECHANICAL | ELECTRICAL | | Last PMS | Last VL SMR | Hrs.before VL | Last OH Type | Next OH Type | Last OH SMR | Hrs.Before OH | |
| Future | | | | | | | | | | | | | | | | |
| 2 | 5018188 | ZAP01150 | CAT-3516 B | XQ-2000 | 35367 | | | 35108 | 34,862 | 1,295 | Complete | Top | 26124 | -1,743 | OPERATIONAL | |
| 3 | 5018220 | ZAP01334 | CAT-3516 B | XQ-2000 | 47762 | | | 47492 | 45,984 | 222 | Top & Bottom | Complete | 43370 | 3,508 | OPERATIONAL | |
| 4 | 5018234 | ZAP01391 | CAT-3516 B | XQ-2000 | 24897 | 4 pcs.Radiator Fan Blades | 1 Radiator Motor Fan | 24740 | 23,737 | 840 | Top | Top & Bottom | 8402 | -8,905 | OPERATIONAL | |
| 5 | 5018102 | ZAP01042 | CAT-3516 B | XQ-2000 | 51740 | | | 51611 | 51,162 | 1,417 | Complete | Top | 32061 | -11,004 | OPERATIONAL | |
| 6 | 5018173 | ZAP01070 | CAT-3516 B | XQ-2000 | 35411 | | | 35410 | 33,591 | 180 | Complete | Top | 31352 | 3,441 | OPERATIONAL | |
| 7 | 5018211 | ZAP01329 | CAT-3516 B | XQ-2000 | 46789 | | | 46719 | 46,380 | 1,591 | Top | Top & Bottom | 34037 | -5,252 | OPERATIONAL | |
| 8 | 5018236 | ZAP01402 | CAT-3516 B | XQ-2000 | 42954 | | | 43858 | 42,190 | 236 | Complete | Top | 37775 | 1,321 | OPERATIONAL | |
| 9 | 5018150 | ZAP01007 | CAT-3516 B | XQ-2000 | 42092 | | | 41966 | 41,574 | 1,482 | Top & Bottom | Complete | 20612 | -13,080 | OPERATIONAL | |
| 11 | 5018157 | ZAP01011 | CAT-3516 B | XQ-2000 | 37807 | | | 37455 | 37,186 | 1,379 | Complete | Top | 23901 | -6,406 | OPERATIONAL | |
| 12 | 5018181 | ZAP01101 | CAT-3516 B | XQ-2000 | 42829 | | Defective Exciter Rotor and Stator & ESB | 42712 | 40,966 | 137 | Complete | Top | 26498 | -8,831 | OPERATIONAL | |
| 13 | 5018222 | ZAP01367 | CAT-3516 B | XQ-2000 | 37591 | | | 37490 | 35,851 | 290 | Complete | Top | 20013 | -1,878 | OPERATIONAL | |
| 15 | 5018109 | GZS00836 | CAT-3516 B | XQ-2000 | 38152 | | | 37810 | 36,414 | 262 | Top & Bottom | Complete | 18518 | -12,034 | OPERATIONAL | |
| 16 | 5018155 | ZAP01039 | CAT-3516 B | XQ-2000 | 38723 | | | 38428 | 37,028 | 303 | Complete | Top | 30555 | -888 | OPERATIONAL | |
| 17 | 5018235 | ZAP01366 | CAT-3516 B | XQ-2000 | 35058 | | | 35038 | 33,425 | 367 | Complete | Top | 28016 | -1,543 | OPERATIONAL | |
| 18 | 5018036 | BPD01186 | CAT-3516 B | XQ-2000 | 37747 | | | 37481 | 36,098 | 351 | Complete | Top | 27652 | -2,595 | OPERATIONAL | |
| 20 | 5018230 | ZAP01030 | CAT-3516 B | XQ-2000 | 36202 | | | 36032 | 36,144 | 1,942 | Complete | Top | 31825 | 3,123 | OPERATIONAL | |
| 21 | 5018205 | ZAP01365 | CAT-3516 B | XQ-2000 | 41671 | | | 41314 | 40,199 | 526 | Top & Bottom | Complete | 36374 | 2,203 | OPERATIONAL | |
| 22 | 1215004 | ZAH00643 | CAT-3512 | XQ-1500 | 34133 | | | 33863 | 32,958 | 825 | Top & Bottom | Complete | 21007 | -5,626 | OPERATIONAL | |
| 23 | 5018130 | ZAP00876 | CAT-3516 B | XQ-2000 | 39183 | | | 30103 | 29,732 | 1,549 | Complete | Top | 11076 | -11,007 | OPERATIONAL | |
| 24 | 5018138 | GZS00892 | CAT-3516 B | XQ-2000 | 51174 | | | 53145 | 52,112 | 938 | Top | Top & Bottom | 38304 | -6,370 | OPERATIONAL | |
| 25 | 5018071 | GZS00784 | CAT-3516 B | XQ-2000 | 46220 | | | 46025 | 45,615 | 1,395 | Top | Top & Bottom | 38652 | -88 | OPERATIONAL | |
| 26 | 5018109 | ZAP01006 | CAT-3516 B | XQ-2000 | 49308 | | | 49190 | 47,968 | 650 | Top | Top & Bottom | 43124 | 1,316 | OPERATIONAL | |

Engine



Engine & Radiator Side



Radiator



Alternator



Alternator

CATERPILLAR®
GENERATOR SET


SALES MODEL

RATING

KVA KW COS φ HERTZ

CONTINUOUS PRIME STANDBY

GENERATOR DATA

3 PHASE  WIRE

CONNECTION WYE (STAR) DELTA

SERIES PARALLEL

GENERATOR VOLTS AMPS

EXCITATION VOLTS AMPS

FRAME REV/MIN

MAXIMUM TEMPERATURE RISE °C BY RESISTANCE

°C AMBIENT METERS ALTITUDE

CLASS INSULATION

ENCLOSURE TYPE

YEAR

INCLUDE SERIAL NUMBER AND GENERATOR PART NUMBER FROM GENERATOR SERIAL NUMBER PLATE WHEN ORDERING PARTS AND IN CORRESPONDENCE.

GENERATOR FRAME SHOULD BE GROUNDED.

4P-2118 2

CAT® CATERPILLAR® 

MODEL NUMBER

PRODUCT IDENTIFICATION NUMBER ***CAT00000TZAP01030***



CATERPILLAR INC.
PEORIA, IL 61629
USA

PARTS ORDER

239-8986 2

CAT00000TZAP01030

Control Panel



Synchronizer & output Main CB Cubicle



Load sharing module



Motor Starter & Battery charger



Container

