

77MW 50Hz GE FRAME 6-6FA GAS Turbine Power Plants for sale

We are pleased to offer a rare 77MW 50Hz GE FRAME 6-6FA GAS Turbine Power Plant for you with short running hours and a very attractive price.

The GAS Turbine was manufactured by GE in 2011 and the purpose of this power plant was said to be used as an emergency generator in response to the Japanese tsunami, but it was no longer used. So, it is now for sale. This power plant has surprisingly had a very short running hours of less than 1,000 hours.

This plant stopped its duty, and was dismantled 4 years ago, and has been preserved in storage places. Therefore, it is ready for delivery and buyer's inspection in the sites. Some of site preservation pictures are included.

- Maker: GE International Inc
- Model: GE FRAME 6-6FA(PG6111) gas turbine
- Year of production: 2011
- Output: 77,000kWe
- Total Running Hours: less than 1,000 hours

If you are interested in, please feel free to contact us as soon as possible.

77MW 50Hz GE FRAME 6-6FA GAS Turbine Power Plants for sale

■ Main Specifications

■ GAS Turbine

Maker	GE International Inc
Model	GE FRAME 6-6FA(PG6111)
Year of production	Sep. 2011
Output	81,000kW
Speed	5,231rpm
Inlet pressure	1.47MPa
Exhaust pressure	12.25kPa
Number of compressing stages	18
Turbine stage	3
Design ambient temperature	50°C
Inlet temperature	1,431°C
Exhaust temperature	589°C
Heat rate(Btu/kWh)	9,760
Heat rate(kJ/kWh)	10,300
Pressure ratio	15.6:1
Mass flow(kg/sec)	203
Efficiency	35%
Fuel	Town Gas
Total operation hours	Less than 1,000 hours
Number of start & stop	130~140 times

■ Generator

Maker	GE International Inc
Year of production	2011
Voltage	11,000V
Electrical output rate	77,000kW
Speed	3,000rpm
Frequency	50Hz
Maximum ambient temperature	40°C
Minimum ambient temperature	-1°C
Maximum cooling temperature	51°C
Stator mass	approximately 79ton
Rotor mass	approximately 28ton
Rotor complete mass	approximately 145ton

■ **Equipment List**

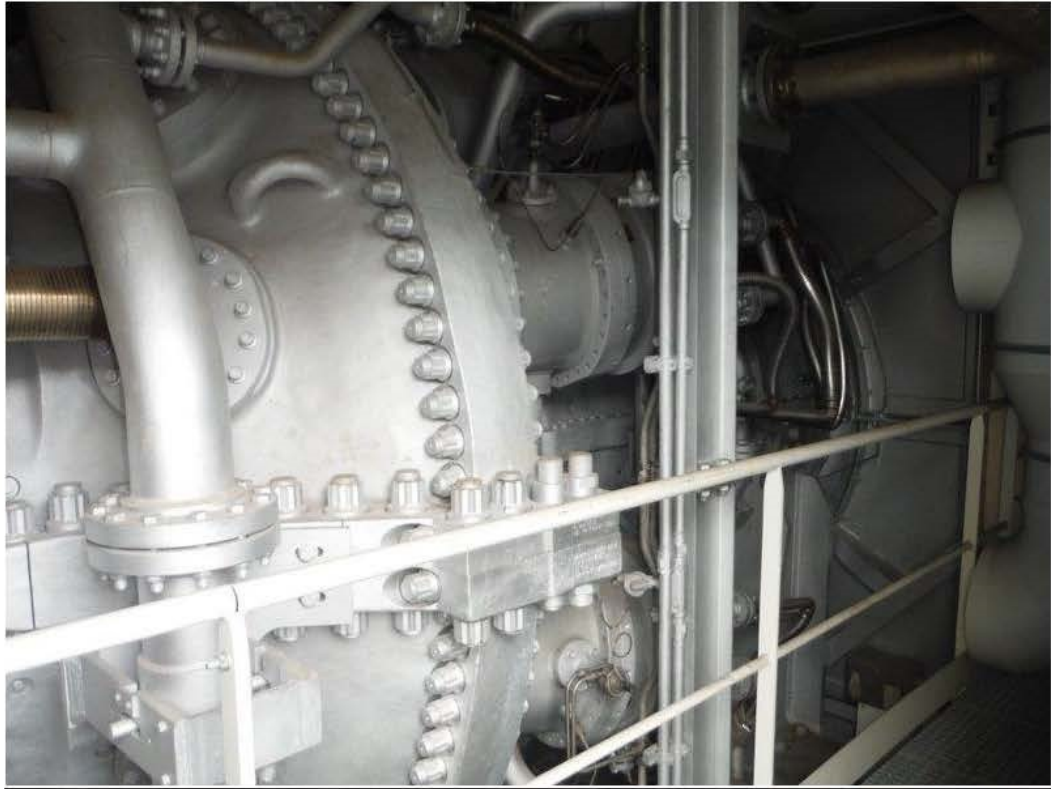
1	GAS TURBINE
2	CO2 BOTTLES CONTAINER
3	GENERATOR ACOUSTICAL ENCLOSURE
4	COMPRESSOR WASHING SKID
5	EXHAUST SILENCEERS
6	EXHAUST PERSONAL PROTECTION
7	TEWAC GENERATOR
8	GENERATOR NEUTRAL ACCESSORY COMPARTMENT (GNAC)
9	GENERATOR LINE ACCESSORY COMPARTMENT (GLAC)
10	CORIOLIS FUEL GAS FLOWMETER
11	GT WALKWAYS
12	FUEL GAS COALESCING FILTERS
13	FUEL GAS SAFETY SHUT OF VALVE (SSOV)
14	GT AIR PROCESSING UNIT
15	SELF CLEANING AIR FILTER
16	AIR INLET DUCTS WITH SILENCERS
17	EXHAUST FIFFUSER
16	STATIC FREQUENCY CONVECTOR (5FC)
19	OIL/GAS MODULE
20	AIR INLET SUPPORT STRUCTURE
21	GT ACOUSTICAL ENCLOSURE
22	OIL/GAS MODULE ACOUSTICAL ENCLOSURE
23	STATIC EXCITATION
24	PACKAGED ELECTRONIC & ELECTRICAL CONTROL CABINET (PEECC)
25	BATTERY COMPARTMENT
26	EXCITATION TRANSFORMER
27	WASHING WATER RECOVERY PIT
28	LUBE OIL SECONDARY CONTAINMENT
29	PIPING TRENCH AND SUPPORT PEDESTAL

■ **Terms and Conditions**

Status	Ready to delivery
Location	Japan
Delivery	After signing contract

■ GAS Turbine Power Plant Pictures















■ GAS Turbine Site Preservation Pictures taken in 2020









--
ALL DETAILS GIVEN IN GOOD FAITH BUT WITHOUT GUARANTEE --