



Original Design of Insulated FRP Dome House

## VACATION STARTS AT DOME



## UNIQUE LIVING POD

SINCE 2014

Kitchen/ Washroom/ Finely Selected Furniture/ Flooring Available

About

## DOME HOUSE

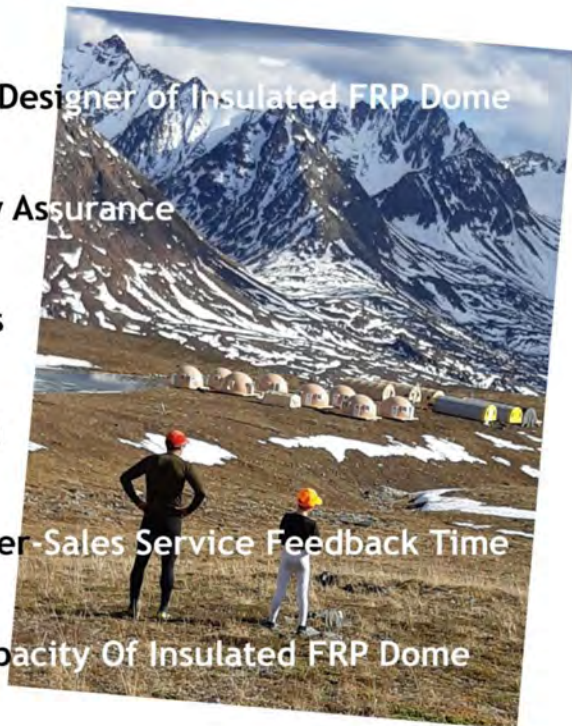
With 8+ years experience of research and design and manufacture insulated FRP dome house, we have produced thousands of insulated FRP dome, products are exported to 86 countries and regions.



THREE  
HOURS  
BUILD  
A  
HOUSE

## WHY CHOOSE US?

- 8** Years experience , Original Designer of Insulated FRP Dome
- 6** S Management--Quality Assurance
- 10+** Patents And Certifications
- 0** Cost for Layout Design
- 12** Hours-- Inquiry And After-Sales Service Feedback Time
- 200** Units/ Month, Largest Capacity Of Insulated FRP Dome



# VACATION STARTS AT DOME

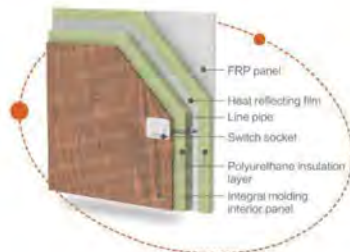


## UNIQUE LIVING POD:

- 6.2m Diameter x 3.5m High;
- 60mm Thickness, 30sqm;
- Door & Window Included;
- Superb Heat & Sound Insulation;
- Overall Lifespan Of 50+ Years;
- Easy Assemble And Removal;
- Easy Clean, Low Maintenance;
- Suitable Temperature: -50°C ~ +50°C

## 02 What makes more and more people choose a “dome house” ?

D O M E  
H O U S E



### Patented wall structure

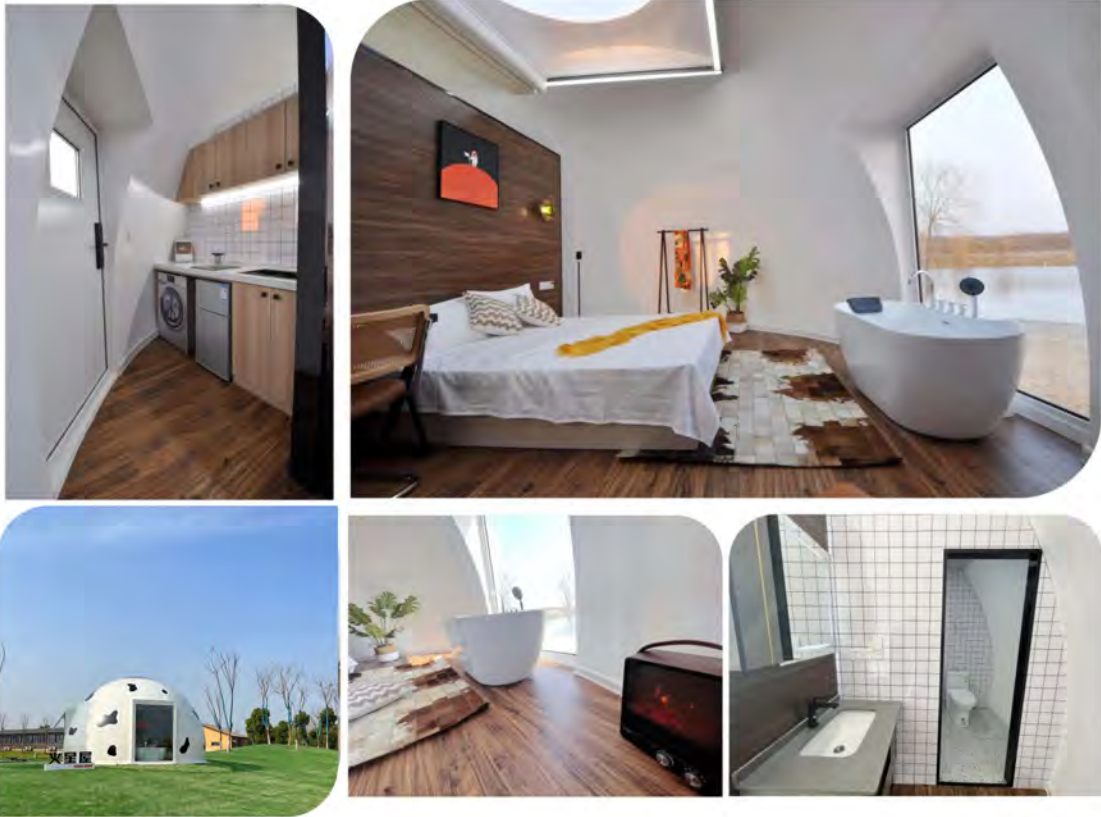
FRP panels combined with PU insulation material to be “sandwich structure” (thickness 60mm), also combined with wiring tubes and switch socket.

### Features and Benefits:

- Patented FRP+PU+FRP Sandwich Insulation Wall Panel
- Emergency Escape Channel Available
- 2m Diameter Skylight ( Polycarbonate Sheets 12 Times Harder Than Toughened Glass, Same Material And Construction Used To Make Helicopter Windscreens)
- Air Vent Extraction To Allow Hot Air Escape
- Withstand Heavy Wind, Rain & Snow, Customers Stay Warm & Dry
- Lockable Door For Maximum Security
- With Expansion Module For Expanding The Space

# One Dome House Meet All Your Functional Need

Kitchen/ Washroom/ Flooring/ Finely Selected Furnitures



**WHAT YOU SEE IS WHAT YOU GET!**

## WHY BUY ONE STOP?

Customized Modules For Dome

No Extra Shipping Cost

One Loading, One Customs Clearance

Received All The Goods At One Time

One Customer Service Staff To Solve All After-sales Problems

## Product Parameters :

Diameter:	6200mm
Height:	3500mm
Thickness:	60mm
Area:	30sqm
Basic Configuration:	1 Door + 1 Window
Material:	FRP+ Polyurethane
R-value:	10.8
Wind:	210km/ h
Earthquake proof:	10 Grade
Snow Load:	≥ 1. 40kn/ sqm
Weight:	1150kg
Color:	Customized
Shipping:	4-5 Sets/ 40HQ

 trueblue



## Japanese 6 S Management

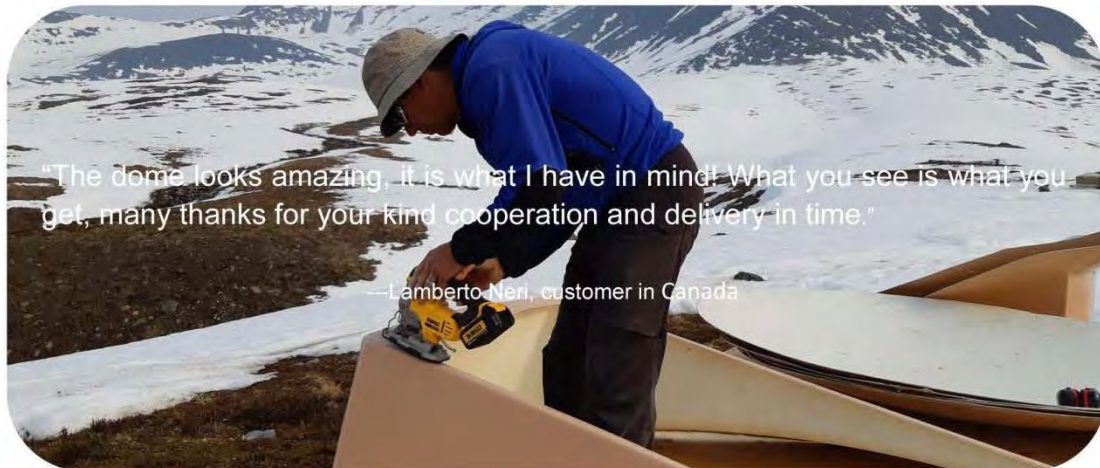
SEIRI SEITON SEISO SEIKETSU SHITSUKE SECURITY



**Production Cycle:** 15-35 Days According To Order Quantity.

**Shipping:** 4-5 Units / 40HQ Container.

## CUSTOMER FEEDBACK



# FAQ

## **Does the Dome House have to be built on a concrete slab?**

The Dome House can be built on any floor platform. We designed a flanging at the bottom of the dome and provide expansion bolts for a strong link between the dome and the foundation platform.

## **Are there different sizes for the Dome House?**

We only have one size dome house, 6.2m diameter x 3.5m height, occupies 30 sqm, which is proved the most effective size of dome, also you can connect two or more domes to expand the space.

## **How does ventilation work in a Dome House?**

Every Dome House comes with a permanently ventilator scoop as the ventilation system. It allows hot and humid air to ventilate through the high part of the dome.

This feature ensures there is no build up of stagnant air to cause mold or condensation and it does not affect the internal comfort of the dome through hot or cold climates.

## **Can you install the Dome House yourself?**

Certainly! We have designed the system to make it really easy to assemble a Dome House. Skilled worker can assemble one dome in 2 hours, for unskilled man, normally 3-4 hours is enough to assemble one dome.

## **What does FRP stand for?**

FRP stands for "Fiber Reinforced Plastics" and refers a wide range of resin based composites used for fabricating many high-performance structures and vehicles like yachts, airplanes, racing cars, high speed trains and many other high performance items.

## **How about warranty and after-sale service?**

We promise to guarantee the main structure of House for 3 years. If you receive damaged goods, please contact our staff within 7 days and provide clear pictures or videos. We will process it within 3 working days.

## NEW DESIGN 2022

