

Amedeo Modigliani

Bride and Groom
(Les Mariés)

AMEDEO MODIGLIANI
(1884-1920)

BRIDE AND GROOM 1915-16
(LES MARIÉS)

Oil on canvas
55 x 46 cm. / 21¾ x 18¼ in.
Signed lower right

PROVENANCE:

Paul Guillaume, Paris
Frederic Clay Bartlett
Museum of Modern Art, New York



LITERARY REFERENCES:

- Pfannistiel, A., "Catalogue présumé" in *Modigliani*, Éditions M. Seheur, Paris, c. 1929, p. 13
- Dale, M., *Modigliani*, A.A. Knopf, New York, 1929, no. 26
- Barr, Jr., A.H., *Painting and Sculpture in The Museum of Modern Art*, New York, 1942, no. 683
- Barr, Jr., A.H., *Painting and Sculpture in The Museum of Modern Art*, New York, 1948, no. 532, p. 60
- Soby, J.T., *Modigliani: Paintings, Drawings, Sculpture*, The Museum of Modern Art, New York, 1951, p. 11 (illustrated)
- Jedlicka, G., *Modigliani*, Eugen Rentsch Verlag, Zürich, 1953, pl. 9
- Pfannistiel, A., *Modigliani et son oeuvre*, Bibliothèque des Arts, Paris, 1956, no. 67 bis, p. 78
- Ceroni, A., *Amedeo Modigliani, peintre*, Edizione del Milione, Milan, 1958, no. 43, p. 47 (illustrated)
- Barr, Jr., A.H., *Painting and Sculpture in The Museum of Modern Art*, New York, 1958
- Bucarelli, P. & Ponente, N., *Modigliani*, Galleria nazionale d'arte moderna, Rome, 1959, no. 7, p. 38, pl. I
- Russoli, F., *Modigliani*, Harry N. Abrams, New York, 1959, pl. 4 (illustrated)
- Soby, J.T., *Modigliani: Paintings, Drawings and Sculpture*, 3rd revised edition, The Museum of Modern Art, New York, 1963, p. 25 (illustrated and on the front cover)
- Werner, A., *Amedeo Modigliani. The Library of Great Painters*, Harry N. Abrams, New York, 1966, pp. 90-91 (illustrated)
- Lantheimann, J., *Modigliani 1884-1920: Catalogue Raisonné, sa vie, son oeuvre complet, son art*, Gráficas Condal, Barcelona, 1970, no. 54, p. 111, p.173 (illustrated)
- Contensou, B., & Marchessau, D., *Amedeo Modigliani 1884-1920*, Musée d'art moderne de la ville de Paris, Paris, 1981, no. 23, pp. 114-115 (illustrated)
- Roy, C., *Modigliani*, Skira-Rizzoli, New York, 1985, pp. 43, 155 (illustrated)
- Parisot, C., *Modigliani: Catalogue Raisonné, Peintures, dessins, aquarelles, Vol. II*, Graphis arte, Livorno, 1990, no. 18-1915, pp. 78, 281 (illustrated)

Schmalenbach, W., *Amedeo Modigliani: Malerei, Skulpturen, Zeichnungen*, Prestel-Verlag, Munich, 1990, pl. 1, p. 8 (illustrated)

Patani, O., *Amedeo Modigliani: catalogo generale, Dipinti, Vol. I*, Leonardo, Milan, 1991-1994, no. 59, p. 87 (illustrated)

Parisot, C., *Modigliani*, Éditions Pierre Terrail, Paris, 1992, pp. 70-71 (illustrated)

Hall, D., *Modigliani*, Phaidon, London, 1994, no. 21, pp. 72-73 (illustrated and discussed on p. 16)

Wayne, K., *Modigliani and the Artists of Montparnasse*, Harry N. Abrams, New York in association with the Albright-Knox Art Gallery, Buffalo, 2002, fig. 28, p. 67 (illustrated)

EXHIBITIONS:

Museum of Modern Art, New York: Exhibited in the permanent collection for over 60 years from 1942 except where noted below:

Recent Acquisitions: Painting and Sculpture, The Museum of Modern Art, New York, 1942

European and American Paintings, Travelling exhibition organized by The Museum of Modern Art, New York, 1943-44: State University of Iowa, Iowa City; Vanderbilt University, Nashville; Vassar College, Poughkeepsic; Amherst College, Amherst; Society of the Four Arts, Palm Beach; Wellesley College, Wellesley; Florida State College for Women, Tallahassee; Cornell University, Ithaca; Minnesota State Fair, St. Paul

Paintings from the Collection of The Museum of Modern Art, Organized by the Museum of Modern Art, Travelled to: Baltimore Museum of Art, 1946

19th and 20th Century European and American Painting, Des Moines Art Center, 1948

20th Century Italian Art, The Museum of Modern Art, New York, 1949

Modigliani-Soutine, Cleveland Museum of Art, 1951

Modigliani: Paintings, Drawing, Sculpture, The Museum of Modern Art, New York, 1951, p. 11 (illustrated)

Modigliani, Sesta Quadriennale Nazionale d'Arte di Roma, Rome, 1951-52

Modigliani, Society of the Four Arts, Palm Beach, 1954

Modigliani, Lowe Art Gallery, Coral Gables, 1954

Modigliani, Contemporary Arts Association of Houston, 1954

25th Anniversary Exhibition: Paintings, The Museum of Modern Art, New York, 1954-55

The Preservation Society of Newport, RI, exhibition in conjunction with the Washington-Rochambeau Celebration, 1955

Mostra di Amedeo Modigliani, Palazzo Reale, Milan, 1958, no.10 (illustrated)

Amedeo Modigliani, Galleria Nazionale d'Arte Moderna, Rome, 1959, no. 7, p. 38, pl. I (illustrated)

Amedeo Modigliani, Paintings, Sculpture and Drawings, The Contemporary Arts Center, Cincinnati, 1959, no.6 (illustrated)

Amedeo Modigliani, Atlanta Arts Association, 1960

20th Century Italian Art from American Collections, Travelling exhibition organized by The Museum of Modern Art, New York, 1960: Palazzo Reale, Milan; Galleria Nazionale d'Arte Moderna, Rome

Modigliani, Travelling exhibition organized by the Arts Council of Great Britain, London in association with The Edinburgh Festival Society, 1963: Royal Scottish Academy, Edinburgh; Tate Gallery, London, no. 10, p. 15, pl. 5 (illustrated)

Amedeo Modigliani: For the Benefit of the Museum of Modern Art, New York, Loan exhibition: Acquavella Galleries, New York, 1971, no. 10 (illustrated)

Amedeo Modigliani 1884-1920, Musée d'art moderne de la Ville de Paris, 1981, no. 23, pp. 144-145 (illustrated)

Amedeo Modigliani: Malerei, Skulpturen, Zeichnungen, Traveling exhibition, 1991: Kunstsammlung Nordrhein-Westfalen, Dusseldorf; Kunsthaus, Zürich, pl 1, p. 8 (illustrated)

The Unknown Modigliani: Drawings from the Collection of Paul Alexandre, Traveling exhibition, 1994: The Hakone Open Air Museum, Tokyo; Ueno Royal Museum

Provenance updated:

Frederic Clay Bartlett purchased the painting from Paul Guillaume, Paris

After Frederic Clay Bartlett passed away, his son sold the painting in 2001 to the actual owner

NOTA: Frederic Clay Bartlett was honorary trustee of the Museum of Modern Art, NYC.

He made a loan to the Museum of Modern Art, NYC from 23 September 1942 until 2001.

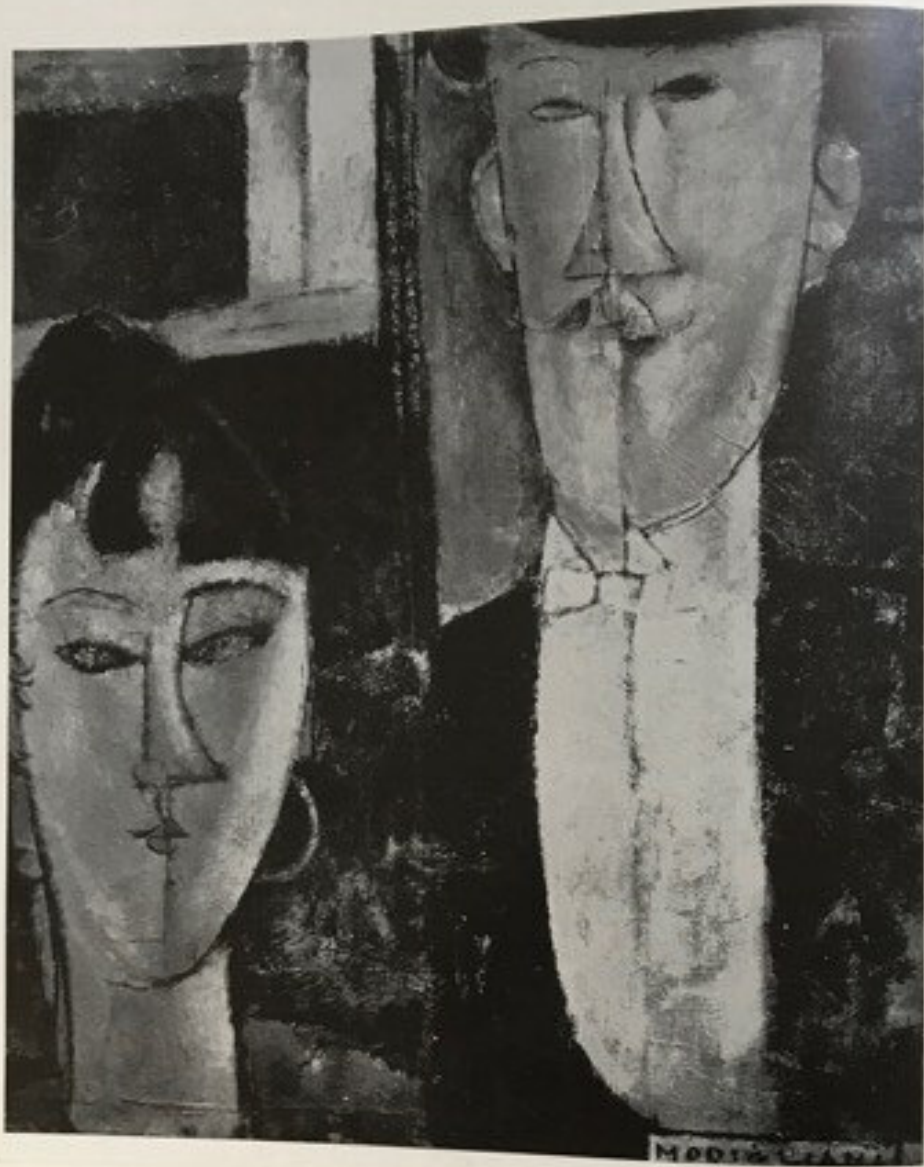
Sold in 2001 to private collector

Note:

This painting displays some of Modigliani's most prominent characteristics. Modigliani's body of work has many portraits of individuals and only three ever painted of pairs, in this case a newly married couple.

This is supported by the gentleman's fancy dress. While the woman's clothing cannot be seen, it can be imaged her dress would match the level of the groom's. The elongated faces and necks of the subjects are also typical of Modigliani's style.

Their minuscule mouths, pointed noses and empty eyes are also a common style of Modigliani's portraits, undoubtedly inspired by his fascination with African masks and sculptures. The woman in the painting also represents Modigliani's aesthetic ideal: dark hair and pale skin.



43. Les mariés - 1915.

41.

Tête de femme (au ruban noir)

Huile sur toile. H. 0,55; L. 0,46

Signé en bas à gauche

Peint vers 1915

Coll. privée, Paris

Exp. Cent tableaux de Modigliani, Galerie Charpentier, Paris 1958

Bibl. G. Waldemar, *La grande peinture contemporaine à la collection Paul Guillaume*, Paris s.d. (1929), repr. pag. 145; A. Pfanstiel, *Modigliani*, Paris 1929, cat. prés. pag. 32/IV; A. Pfanstiel, *Modigliani et son oeuvre*, Paris 1956, cat. rais. pag. 119/n. 196; catalogue, *Cent tableaux de Modigliani*, Galerie Charpentier, Paris 1958, repr. pag. 30.

42.

Madam Pompadour

Huile sur toile. H. 0,61; L. 0,50

Signé en bas à droite; daté à gauche avec le titre

« Madam Pompadour »

Peint en 1915

Coll. The Art Institute of Chicago, Winterbotham collection, Chicago Ill.

Exp. *Modigliani*, The Museum of Art, Cleveland Ohio 1951; *Modigliani*, The Museum of Modern Art, New York N.Y. 1951

Bibl. A. Pfanstiel, *Modigliani*, Paris 1929, cat. prés. pag. 7/V; P. Descargues, *Modigliani*, Paris 1951, repr. pl. 14; G. Jedlicka, *Modigliani*, Erlenbach-Zürich 1953, repr. pl. 10; G. di San Lazzaro, *Modigliani*, Paris 1953, repr. pag. 6; P. Descargues, *Modigliani*, Paris 1954, repr. pl. 14; J. Lipchitz, *Modigliani*, New York N.Y. 1954, repr. pl. 15 (même édition en allemand et en français. En italien avec texte par M. Valsecchi); A. Pfanstiel, *Modigliani et son oeuvre*, Paris 1956, repr. pl. 11, cat. rais. pag. 68/n. 43; C. Roy, *Modigliani*, Genève 1958, repr. coul. pag. 56.

43.

Les mariés

Huile sur toile. H. 0,55; L. 0,46

Signé en bas à droite

Peint en 1915

Coll. The Museum of Modern Art, New York N.Y.

Exp. *Twentieth-Century Italian Art*, The Museum of Modern Art, New York N.Y. 1949; *Modigliani*, The Museum of Art, Cleveland Ohio 1951; *Modigliani*, The Museum of Modern Art, New York N.Y. 1951; *VI Quadriennale Nazionale d'Arte*, Roma 1952; *Modigliani*, Palazzo Reale, Milano 1958

Bibl. M. Dale, *Modigliani*, New York 1929, repr. pl. 26; A. Pfanstiel, *Modigliani*, Paris 1929, cat. prés.

13/IV; A.H. Barr Jr., *Painting and sculpture in the Museum of Modern Art*, New York N.Y. 1948, repr. pag. 60; J.T. Soby and A.H. Barr Jr., *Twentieth-Century Italian Art*, New York N.Y. 1949, repr. pl. 53; catalogue, *Modigliani*, The Museum of Modern Art, New York N.Y. 1951, repr. coul. couv. et pag. 11; M. Raynal, *Modigliani*, Genève 1951, repr. coul. pl. 2; E. Carli, *Modigliani*, Roma 1952, repr. coul. pag. 8 et pl. 4; G. Jedlicka, *Modigliani*, Erlenbach-Zürich 1953, repr. pl. 9; G. di San Lazzaro, *Modigliani*, Paris 1953, repr. pag. 4; J. Lipchitz, *Modigliani*, New York N.Y. 1954, repr. coul. pl. 23-24 (même édition en allemand et en français. En italien avec texte par M. Valsecchi); J.T. Soby, *Modigliani*, New York N.Y. 1954, repr. coul. couv. et pag. 25; *Rivista di Livorno, Omaggio a Amedeo Modigliani*, Livorno luglio-agosto 1954, repr. pl. 7; A. Pfanstiel, *Modigliani et son oeuvre*, Paris 1956, cat. rais. pag. 78/n. 67 bis; C. Roy, *Modigliani*, Genève 1958, repr. coul. pag. 45; catalogue, *Modigliani*, Palazzo Reale, Milano 1958, repr. pl. 10.

44.

Raymond

Huile sur toile. H. 0,37; L. 0,29

Signé et daté en bas à gauche. En bas à droite titre

« Raymond »

Peint en 1915

Coll. privée, Milano

Exp. *Modigliani*, Palazzo Reale, Milano 1958

Bibl. *L'Amour de l'Art*, Paris Octobre 1925, repr. pag. 384; A. Pfanstiel, *Modigliani*, cat. prés. pag. 14/IV; A. Pfanstiel, *Modigliani et son oeuvre*, Paris 1956, cat. rais. pag. 84/n. 39; catalogue, *Modigliani*, Palazzo Reale, Milano 1958, repr. pl. 9.

45.

Béatrice Hastings (devant une porte)

Huile sur toile. H. 0,81; L. 0,54

Signé et daté en haut à droite

Peint en 1915

Coll. M. et Mme Louis Ritter, Scarsdale N.Y.

Exp. *Modigliani*, The Museum of Art, Cleveland Ohio 1951; *Modigliani*, The Museum of Modern Art, New York N.Y. 1951

Bibl. A. Salmon, *Modigliani sa vie et son oeuvre*, Paris 1926, repr. pl. 21; A. Pfanstiel, *Modigliani*, Paris 1929, repr. pag. 15, cat. prés. pag. 6/V1; catalogue, *Modigliani*, The Museum of Modern Art, New York N.Y. 1951, repr. pag. 28; J. Lipchitz, *Modigliani*, New York N.Y. 1954, repr. pl. 31 (même édition en allemand et en français. En italien avec texte par M. Valsecchi); J.T. Soby, *Modigliani*, New York N.Y. 1954, repr. pag. 27; A. Pfanstiel, *Modigliani et son oeuvre*, Paris 1956, cat. rais. pag. 67/n. 39; C. Roy, *Modigliani*, Genève 1958, repr. coul. pag. 70.

CE VOLUME A ETE ACHEVE D'IMPRIMER LE
QUINZE DECEMBRE MIL NEUF CENT CINQUAN-
TE-HUIT POUR LES EDIZIONI DEL MILIONE,
MILAN (ITALIE), Via SACCHI 3, PAR LES OFF.
GRAFICHE ESPERIA, MILAN, VIA MESSINA 28 A,
GRAVURE DES CLICHES, FOTOINCISIONE ARTI-
GIANA ET OFFICINE CROMOGRAFICHE, MILAN.

PHOTOGRAPHIES

A. Study, New York: pl. 155; Albright Art Gallery, Buffalo N. Y.: pl. 128; Alex Reid Lefre Ltd., London: pls. 88, 107, 108, 109, 143; Art Institute, Chicago Ill.: pl. 42; Attilio Bacci, Milan pls. 35, 50; Colten Photos, New York: pl. 119; Courtauld Institute of Art, London: pl. 29; Etien Bignou, Paris: pl. 132; Foto Giacomelli, Venezia: pls. 43, 65, 69, 71, 105, 134; Fototeca A.S.A. Biennale Venezia, Venezia: pls. 31, 67, 80, 87, 93, 95, 97, 98, 102, 111, 113, 125, 135, 146, 149, 151, 153; Galerie Charpentier, Paris: pls. 55, 58, 70, 99, 106, 115, 130; Giraudon, Paris: pls. 77, 8 Knodler, New York: pls. 45, 138, 145; Kurt Blum, Bern: pls. 51, 63, 64, 117, 133, 136, 14 John D. Schiff, New York: pl. 137; Los Angeles County Museum, Los Angeles Calif.: pl. 33; Lou Lansepce, Paris: pls. 3, 112; Marcel Bernheim, Paris: pl. 81; Mario Perotti, Milano: pl. 47; Museu of Art, St. Louis Mo.: pl. 90; National Gallery of Art, Washington D. C.: pl. 91; P. Guillaum Paris: pls. 17, 41, 49, 53, 56, 103, 139, 147; P. Scheier, São Paulo: pls. 32, 84; Peris Gallerie New York: pls. 75, 79; Peter A. Juley & Son, New York: pls. 61, 110; Photo Bulloz, Paris: pls. 73, 8 86; Solomon R. Guggenheim Museum, New York: pls. 100, 122, 151; Tate Gallery, London: pl. 10



