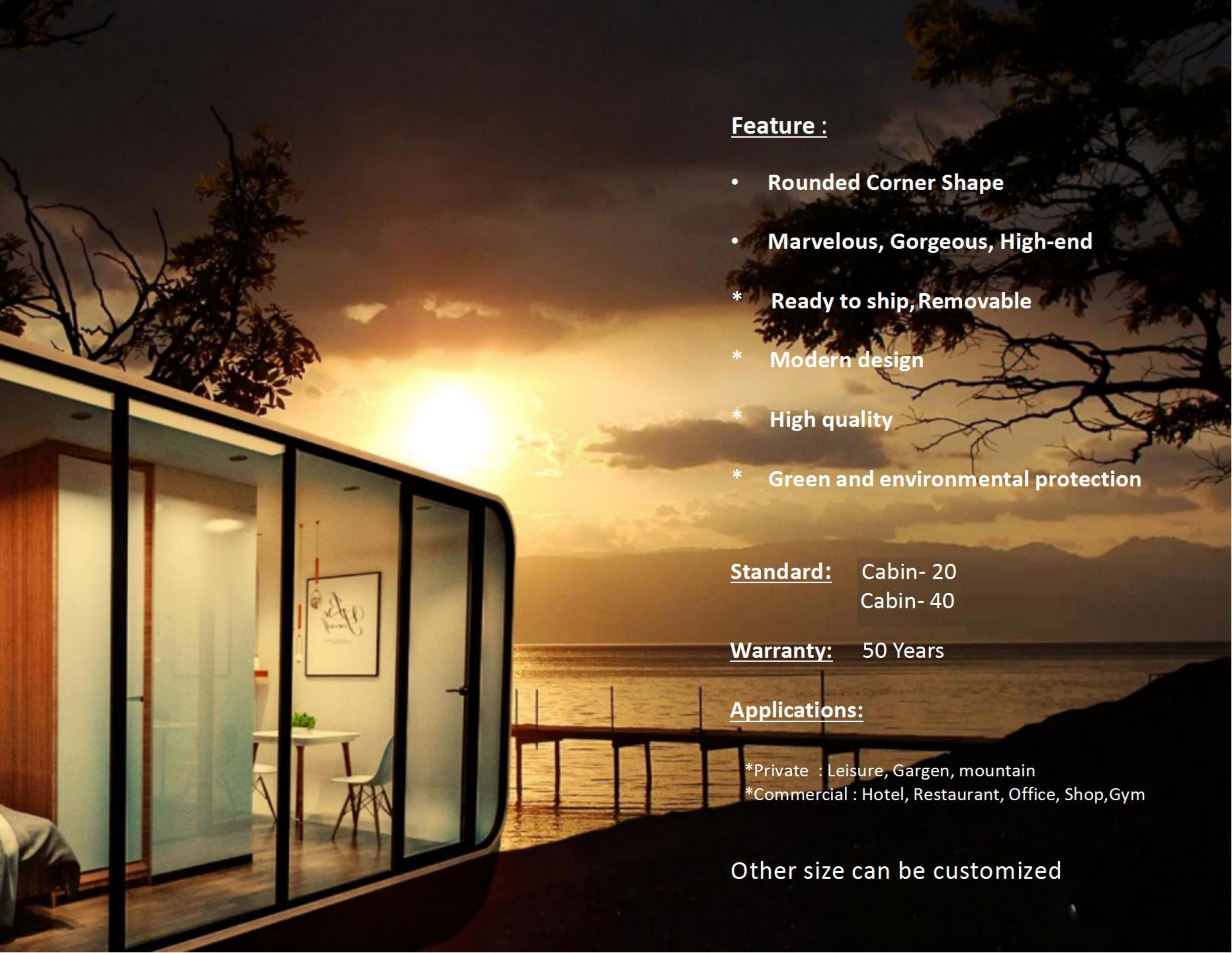


Together we create a new living and working environment!



Feature :

- **Rounded Corner Shape**
- **Marvelous, Gorgeous, High-end**
- * **Ready to ship, Removable**
- * **Modern design**
- * **High quality**
- * **Green and environmental protection**

Standard: Cabin- 20
Cabin- 40

Warranty: 50 Years

Applications:

- *Private : Leisure, Gargen, mountain
- *Commercial : Hotel, Restaurant, Office, Shop, Gym

Other size can be customized

Cabin-20

Part 1: Specification

Size : 5.8m(W) *2.16m(D)*2.2m/2.5m(H)

Weight : About 2500kgs

Layout : 1 * Bedroom , 1 *bathroom,
1 * table space (office desk or simple kitchen)

Type A : Whole body + 1 full set bathroom

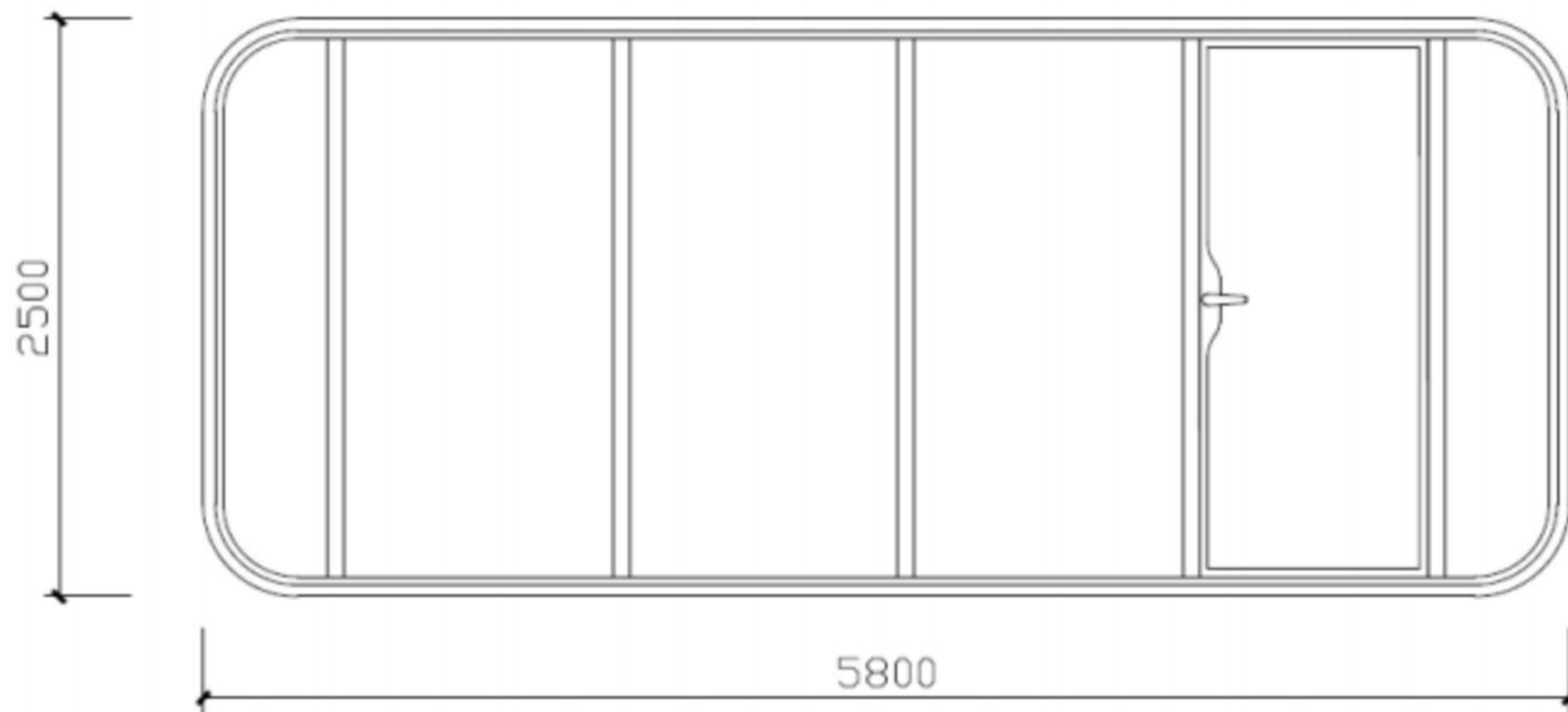
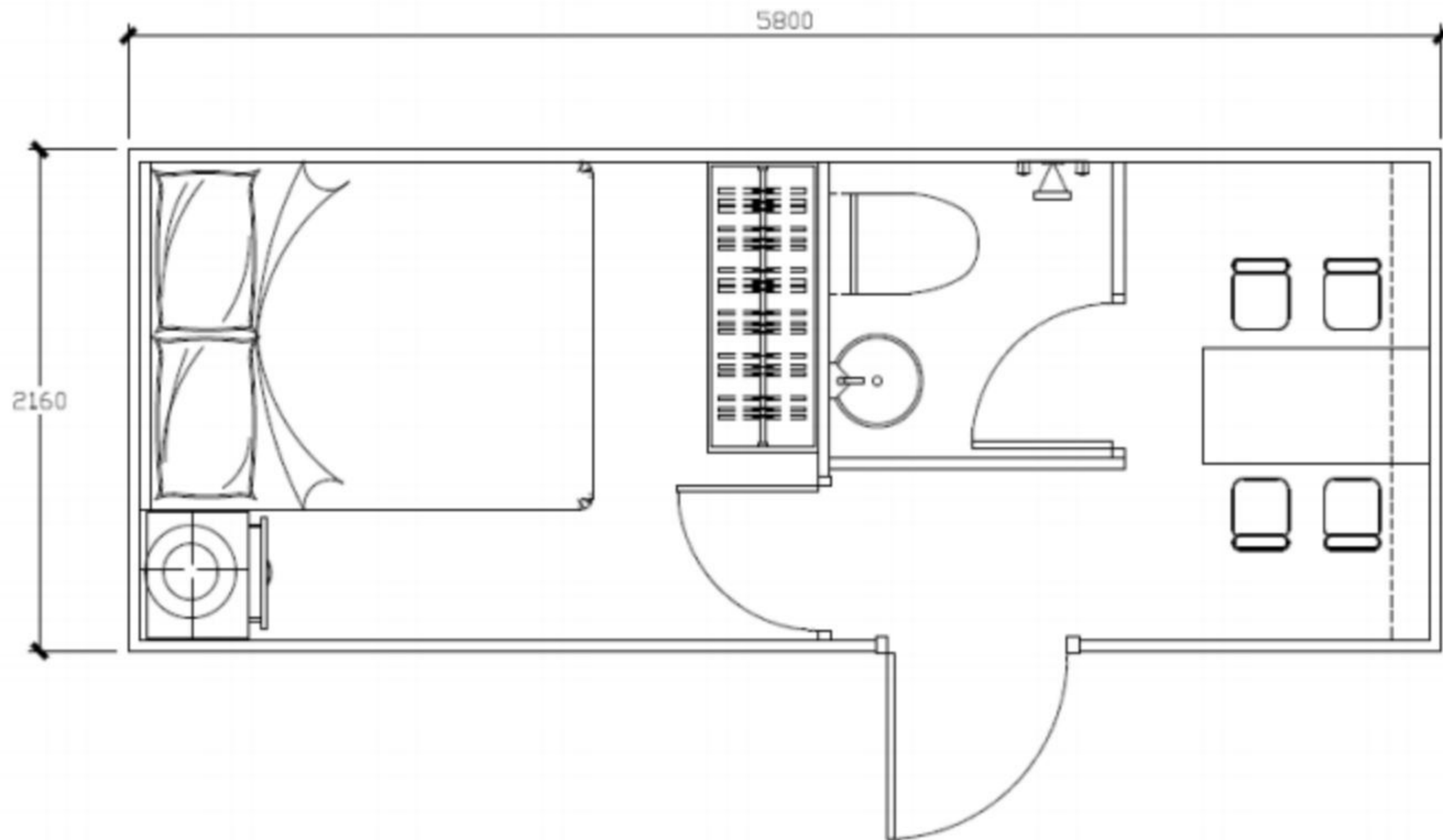
Type B : Type A + Furniture

Type C : Customized



Cabin-20

Part 2: Layout Plan



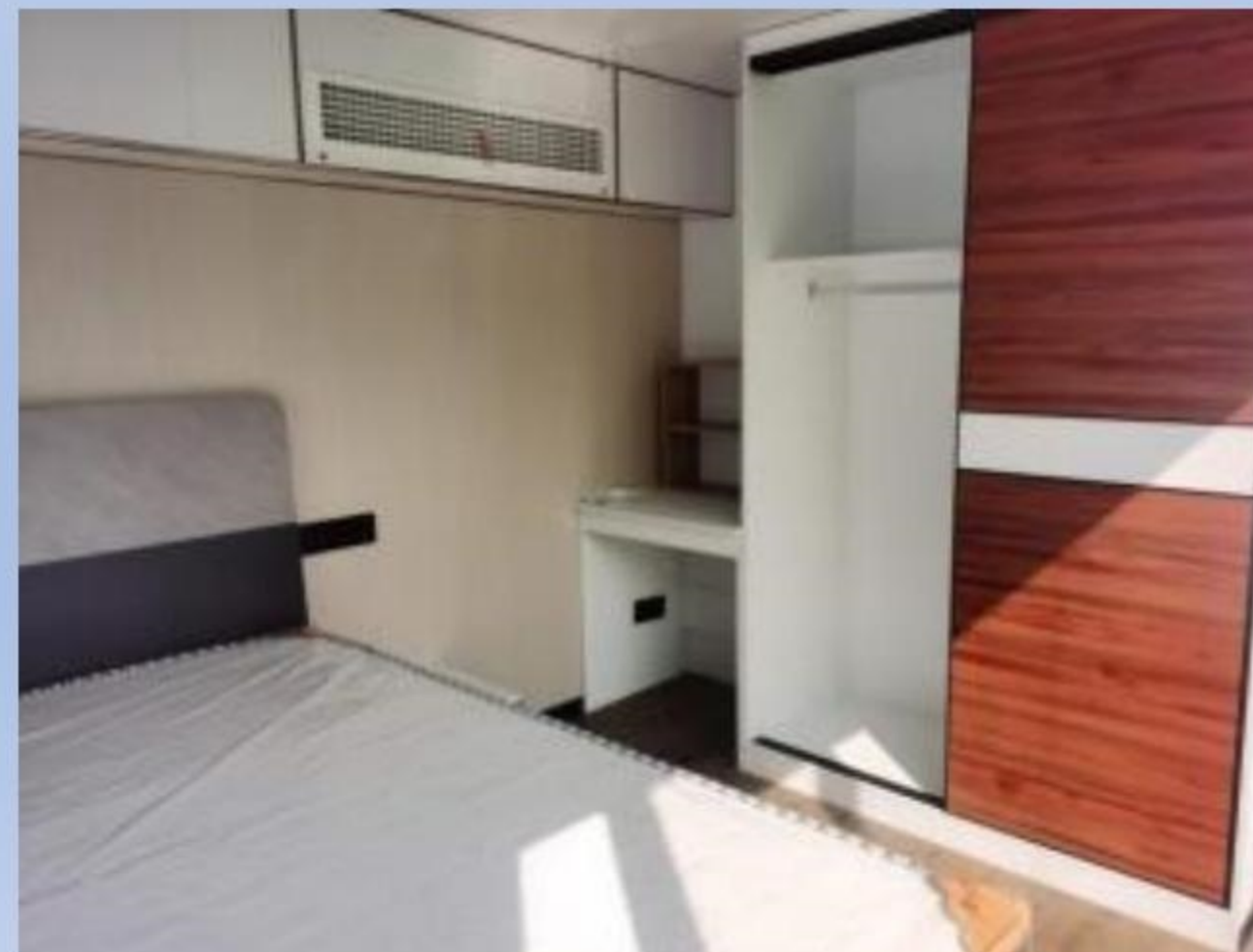
Cabin-20

Part 3: External



Cabin-20

Part 4: Internal



Cabin-40

Part 1: Specification

Size : 11m(W) *2.16m(D)*2.5m(H)

Weight : About 3500kgs

Layout : 1 * Bedroom, 1 *bathroom, 1*living room
1* mini kitchen

Type A : Whole body + 1 full set bathroom

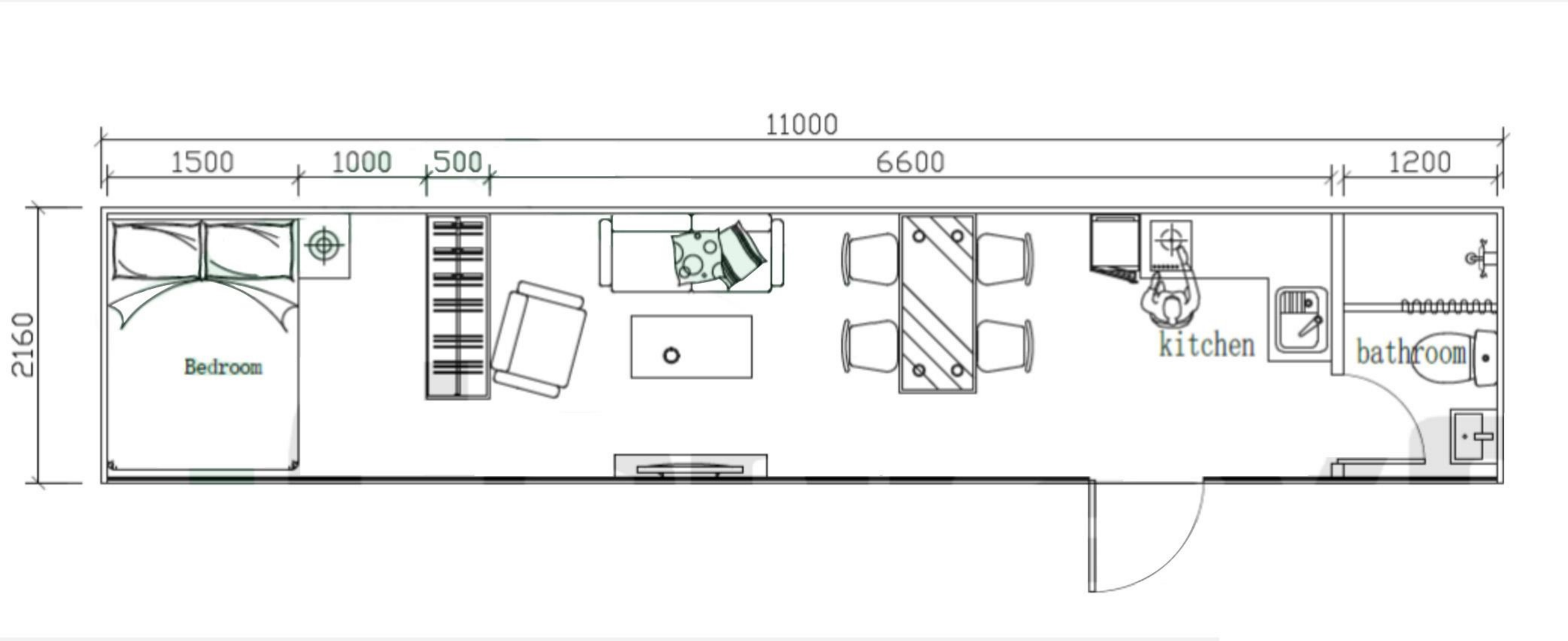
Type B : Type A + Furniture

Type C : Customized



Cabin-40

Part 2: Layout Plan



Cabin-40

Part 3: External



Cabin-40

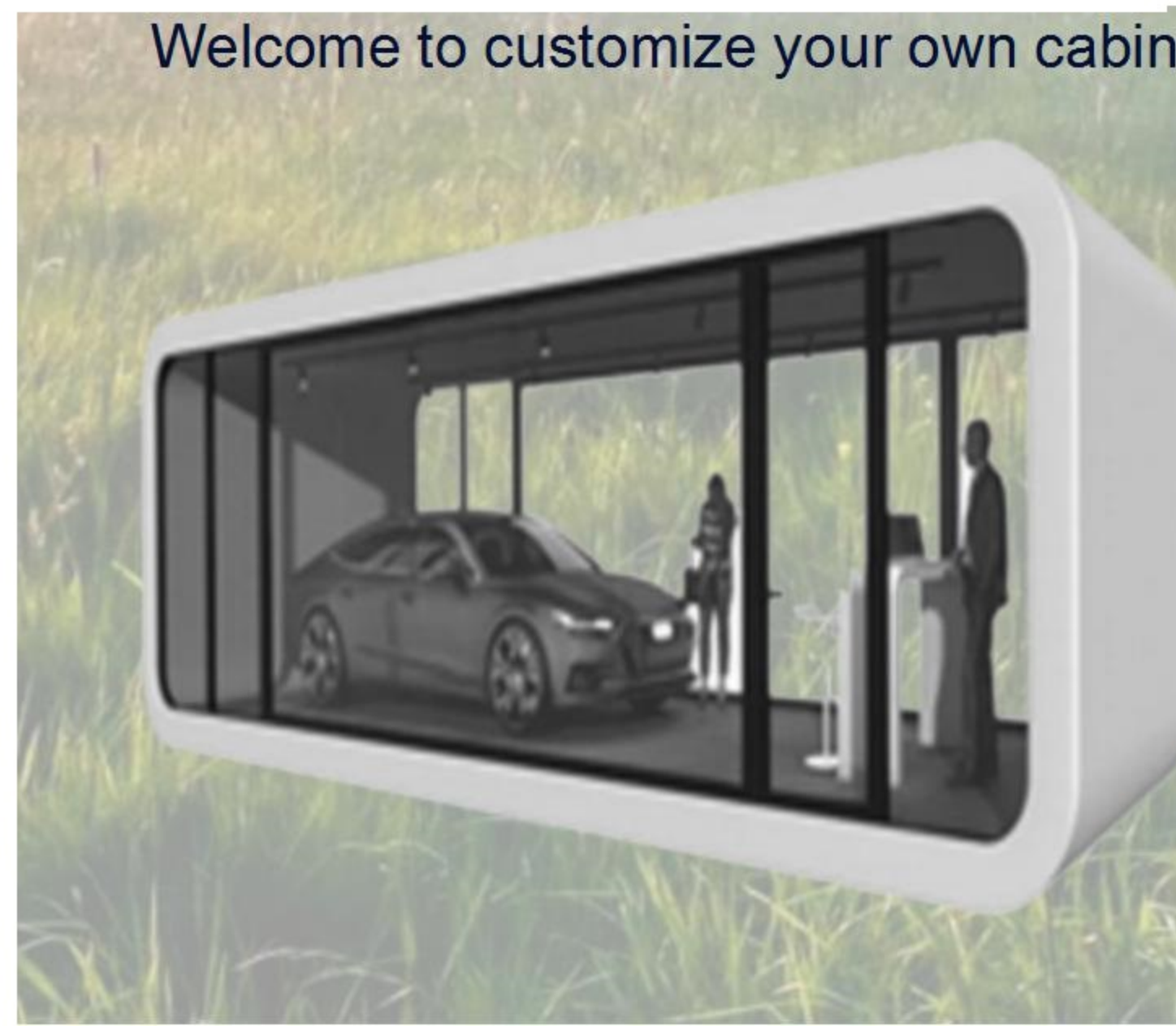
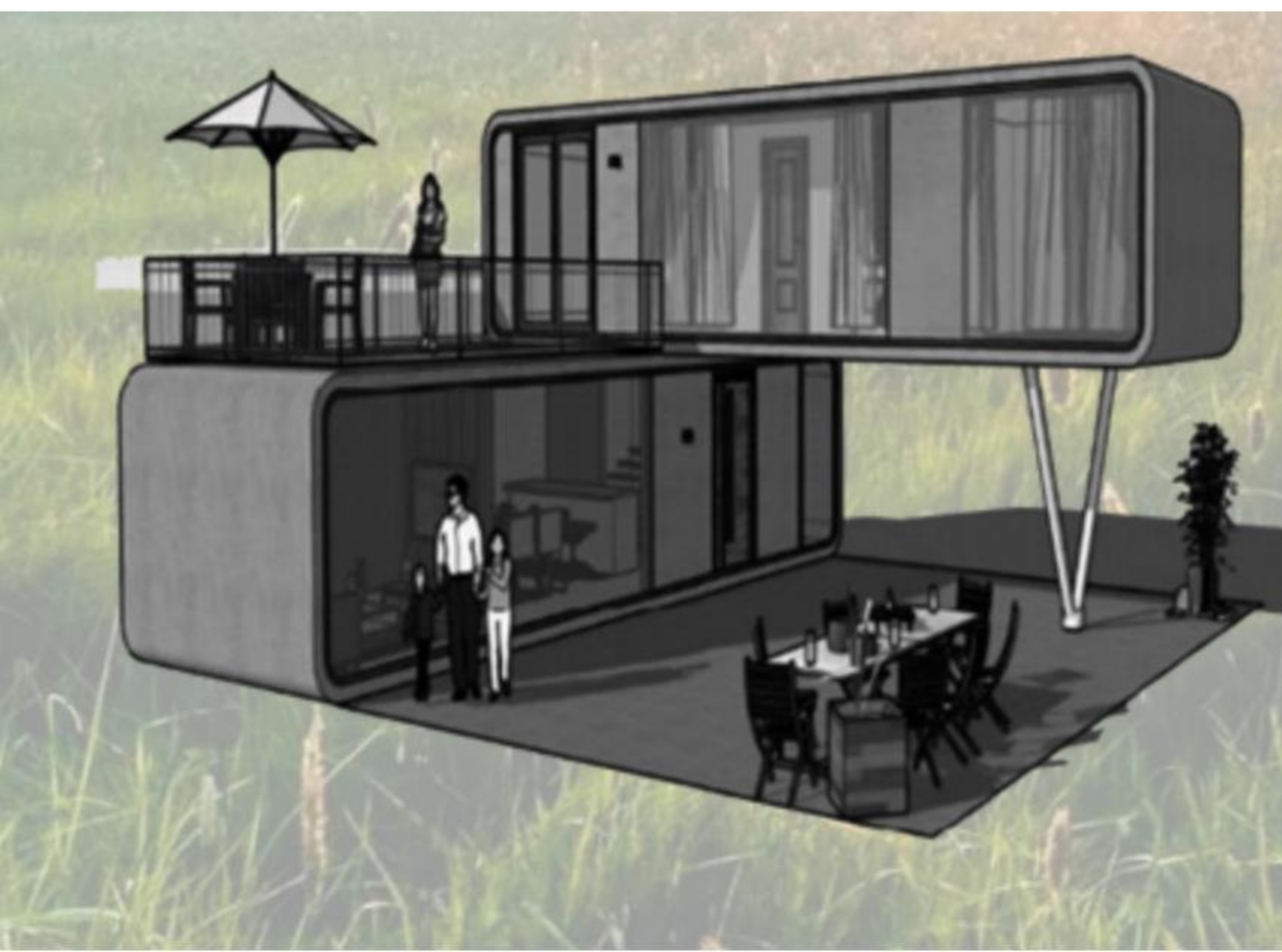
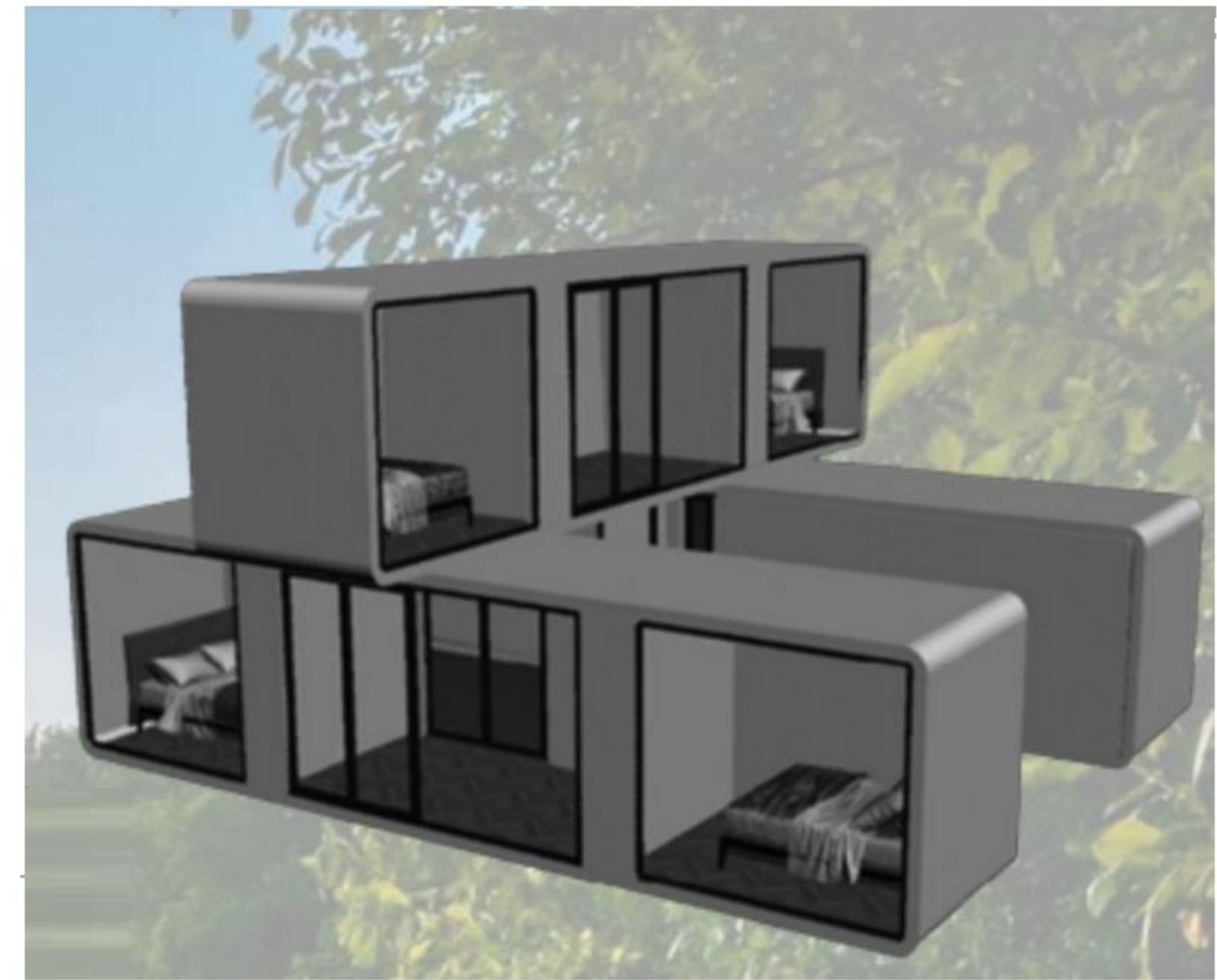
Part 4: Internal





Apple Cabin

- Various Possible



Accessories



Aluminum Casement Door
80 Series
5+9A+5



Female plug IP67



RJ45 connector cable



Square Panel lighting



Plugs , sockets and switches



Aluminum Sliding Door
5+9A+5



Retangular Panel lighting



Round Panel lighting



RV Window

Full Set Bathroom

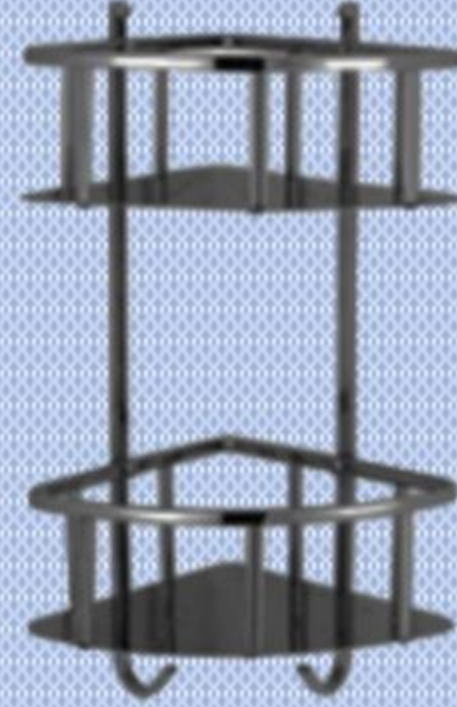


W7621A

Wall-hung Basin

Size: 460X420X190mm

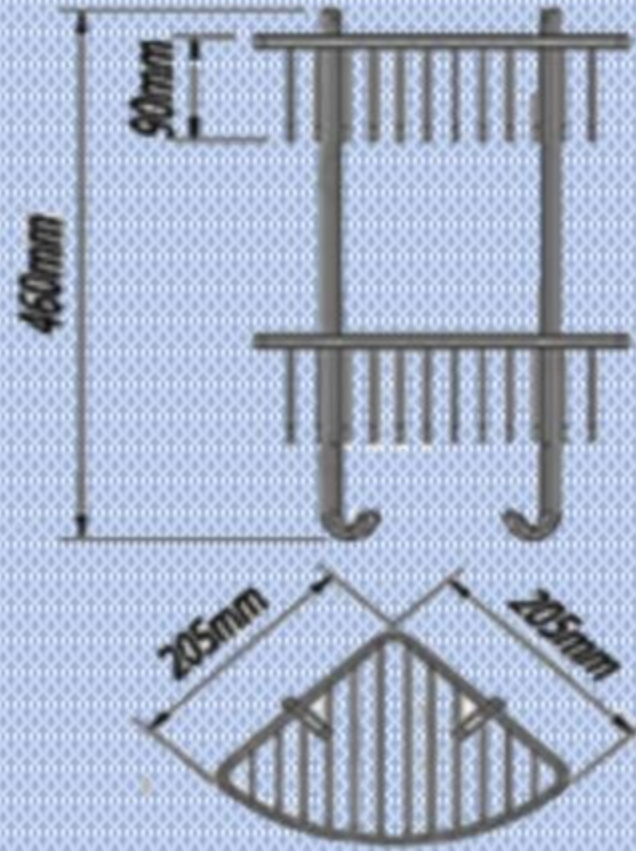
Wall-hung Installation



6622

Corner Shower Basket

304 Stainless Steel



RZ19062701

Shower Faucet Set

304 Stainless Steel

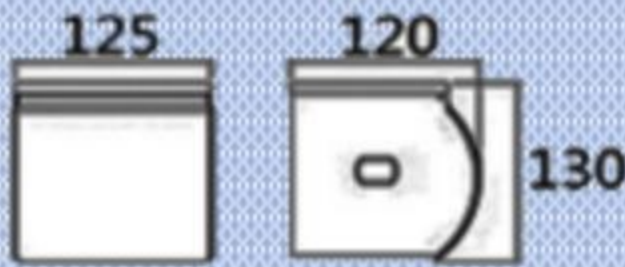
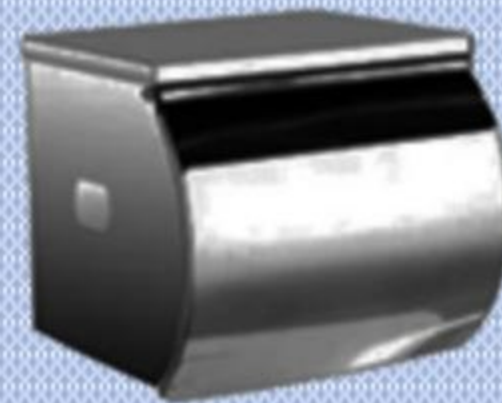
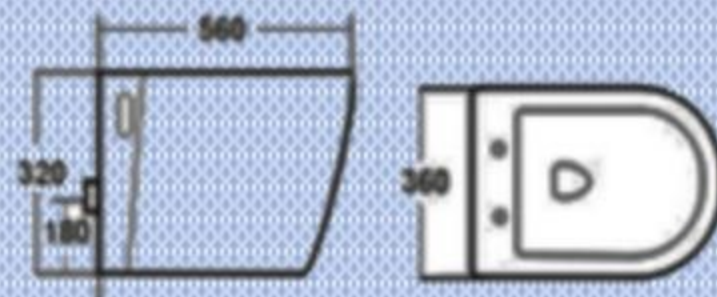


W8212A

Wall-hung Toilet

Size: 560X360X320mm

P-trap, 180mm Roughing-in

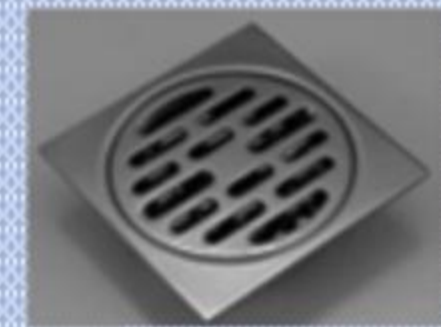


006
Toilet Roll Holder



YMT807

807: 592X214X159



FA9609
Floor Drain